



UTOPIA 14.40

UTOPIA 14.40

BROKER'S COMMENTS

It is hardly to describe the unique selling points of this Utopia in a few words. Some of them are: interior, practical layout, solid and well thought-out design and powerful but economical 6 cylinder Ford Lehman diesel engine. Above deck there is enough space for large companies. Below deck there is the possibility to stay cozy out of the wind. Spacious eat-in galley, cozy saloon and 2 cabins with their own wash basin. The Utopia is easy to handle, even for the inexperienced captain. A boat licence is not required. The Utopia is lying in our sales marina in Katwoude, 7 days a week.

Reinier van der Wolf

SPECIFICATIONS

Dimensions	14.40 x 3.96 x 1.25 (m)	Builder	Tak Hardinxveld Giessendam
Built	1990	Cabins	2
Material	Steel	Berths	6
Engine(s)	1 x Ford-Lehman Super 135 2725E diesel	Hp/Kw	135.00 (hp), 99.22 (kw)
Asking price	sold (VAT)	Lying	at sales office

CONTACT

Sales office	De Valk Monnickendam B.V.	Telephone	+31 (0)299 65 63 50
Address	Hoogedijk 6 1145 PM Katwoude NL	E-mail	monnickendam@devalk.nl

DISCLAIMER

These particulars are given in good faith as supplied but cannot be guaranteed.



GENERAL

Model	UTOPIA 14.40
Type	motor yacht
LOA (m)	14,40
LWL (m)	12,80
Beam (m)	3,96
Draft (m)	1,25
Air draft (m)	4,20
Air draft min (m)	2,65
Headroom (m)	1,90
Year built	1990
Launched	1990
Builder	Tak Hardinxveld Giessendam
Country	The Netherlands
Designer	Arco Yachts Hilversum
Displacement (t)	30
CE norm	NA
Hull material	steel
Hull colour	white
Hull thickness (mm)	5
Hull shape	round-bilged
Superstructure material	steel
Rubbing strake	steel
Deck material	steel
Deck finish	non-skid paint 2 component system
Superstructure deck finish	non-skid paint
Cockpit deck finish	teak
Window frame	aluminium
Window material	tempered glass
Deckhatch	3 x
Insulation	rockwool



Mast can be lowered	manual
Fuel tank (litre)	stainless steel 800 ca
Level indicator (fuel tank)	yes
Freshwater tank (litre)	stainless steel 1030
Level indicator (freshwater)	yes
Wheel steering	hydraulic
Inside helm position	yes
Outside helm position	hydraulic
More info on hull	hull and superstructure sandblasted in 2012 and painted again in two-component paint, Fa. De Vries, Drachten
Extra info	centre bars

ACCOMMODATION

Cabins	2
Berths	6
Interior	mahogany
Floor	carpet
Open cockpit	yes
Saloon	yes
Headroom saloon (m)	2
Heating	Wallas Nautic 40 d Diesel
Dining room	Lower deck aft
Opening door to cockpit	yes
Galley	Lower deck aft
Countertop	Duropol
Sink	emaille
Cooker	electric 3
Extractor	yes
Fridge	Isotherm 85 Ltr.
Freezer	in fridge
Hot water system	220V + engine Boiler 55 Ltr. 1.000 w



Water pressure system	electrical Vetus HF20 of HF08
Owners cabin	double bed
Wardrobe	hanging
Bathroom	shared
Toilet	shared
Toilet system	electric
Wash basin	in the cabin
Shower	shared
Extra info	Wash basin hot- and cold water, Shower headroom 2.5 metres
Guest cabin 1	bunk bed
Wardrobe	shelves
Wash basin	in the cabin
Extra info	wash basin with hot- and cold water
Extra info	Upholstery new 2013

MACHINERY

No of engines	1
Make	Ford-Lehman
Type	Super 135 2725E
HP	135
kW	99,22
Fuel	diesel
Year installed	1990
Maximum speed (kn)	8,5
Cruising speed (kn)	6
Range (nm)	1250
Engine hours	3499
Engine cooling system	closed keelcooling
Drive	shaft
Shaft seal	grease lubricated with automatic grease pump
Engine controls	bowden cable Kobelt 2090 two station single lever controles



Gearbox	mechanical Velvet drive model 10-18-012 ratio 2,91:1 Borg warner
Bowthruster	electric Ameq H7, 7 kw
Exhaust	
Propeller type	fixed 28 x 21
Propeller blades	Bronze 3
Propeller shaft material	stainless steel
Shaft lubrication	grease
Electric bilge pump	yes
Electrical installation	24v / 220v
Generator	wet exhaust Westerbeke 4,5 kw 50Hz 220V 3 cilinder
Start battery	combined with bow thruster * 1 x 24v 230 Ah
Service battery	2 x 200Ah Mastervolt MVG12/200 Gel
Generator battery	1 x 12v 80Ah
Bowthruster battery	*
Battery monitor	2 x Vetus BMV 702
Battery charger	Start battery Vetus Blue Smart service battery via setrling charger/inverter Generator battery Vetus BSC IP65 12/15
Shorepower	with cable
Extra info	Micro seperator type 3x8 watersensor alarm

NAVIGATION

Depth sounder/log	Clipper Duet
VHF	Shipmate RS8100, Advasea FX-400
Navigation lights	yes

EQUIPMENT

Fixed windscreen	foldable
Cockpit table	yes
Cockpit chairs	yes
Bathing platform	yes



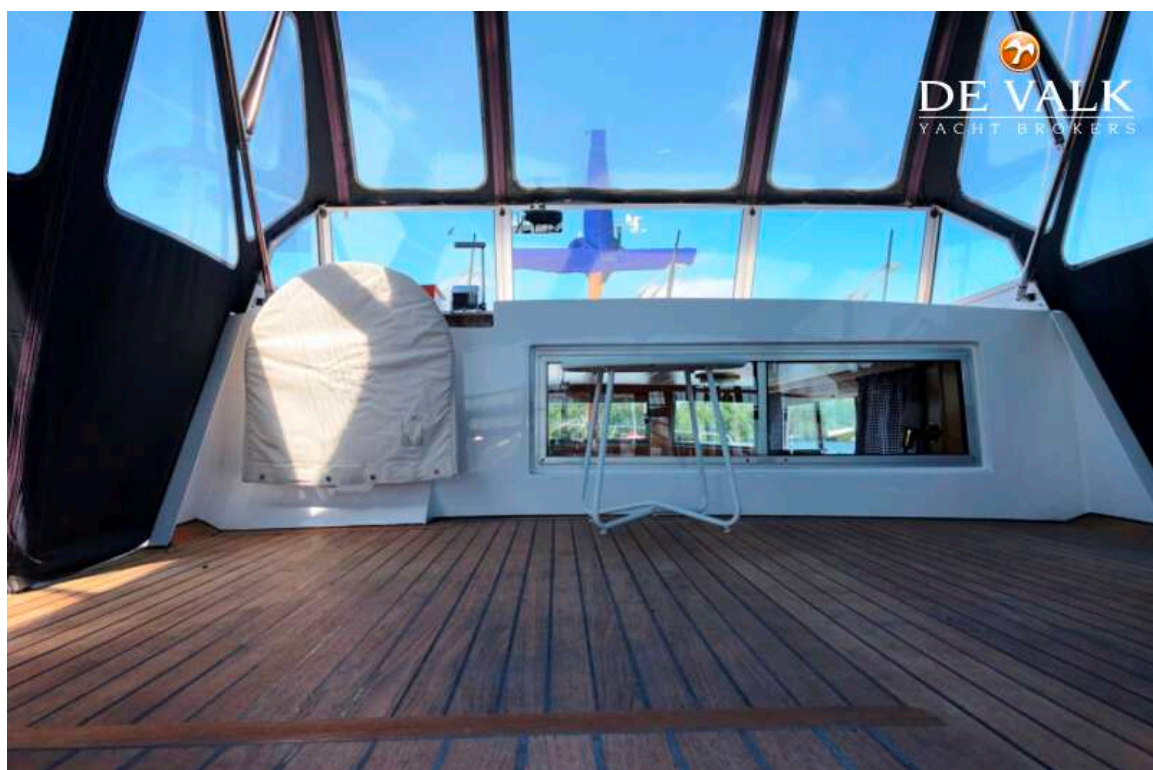
Boarding ladder	stainless steel
Anchor	Pool 24 kg
Anchor chain	30 mtr.
Deck wash	yes
Davits	stainless steel
Davits controls	manual
Sea railing	stainless steel
Grab rail (superstructure)	stainless steel
Railing side opening gates	both sides, starboard and port side
Wiper	3 x
Clearview window	yes
Horn	air pressure
Fenders	6
Mooring lines	6



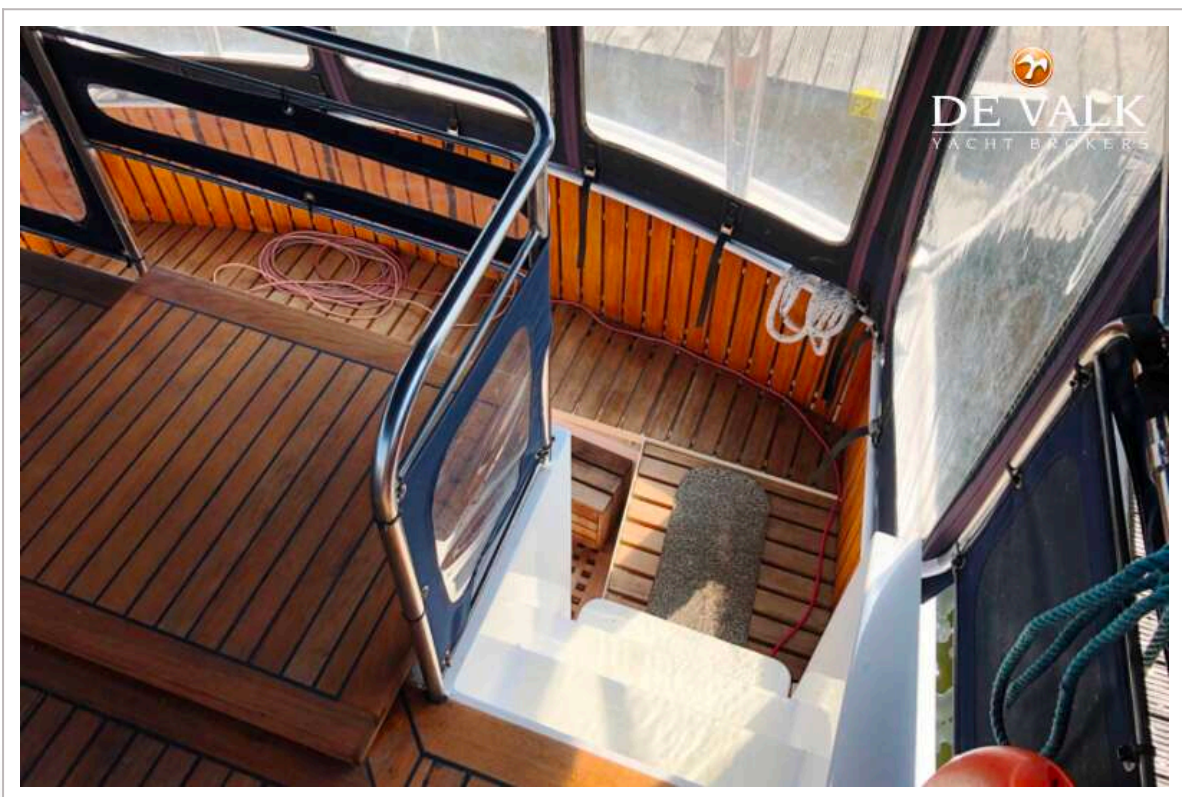
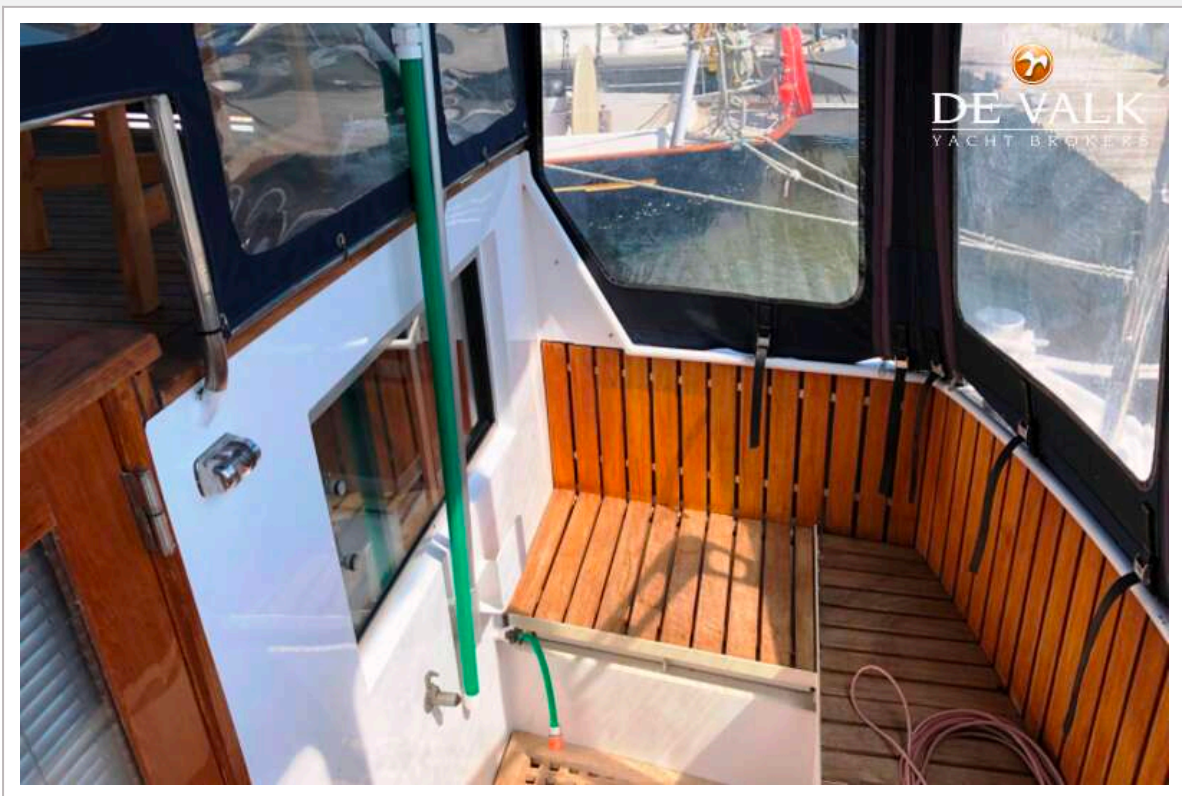




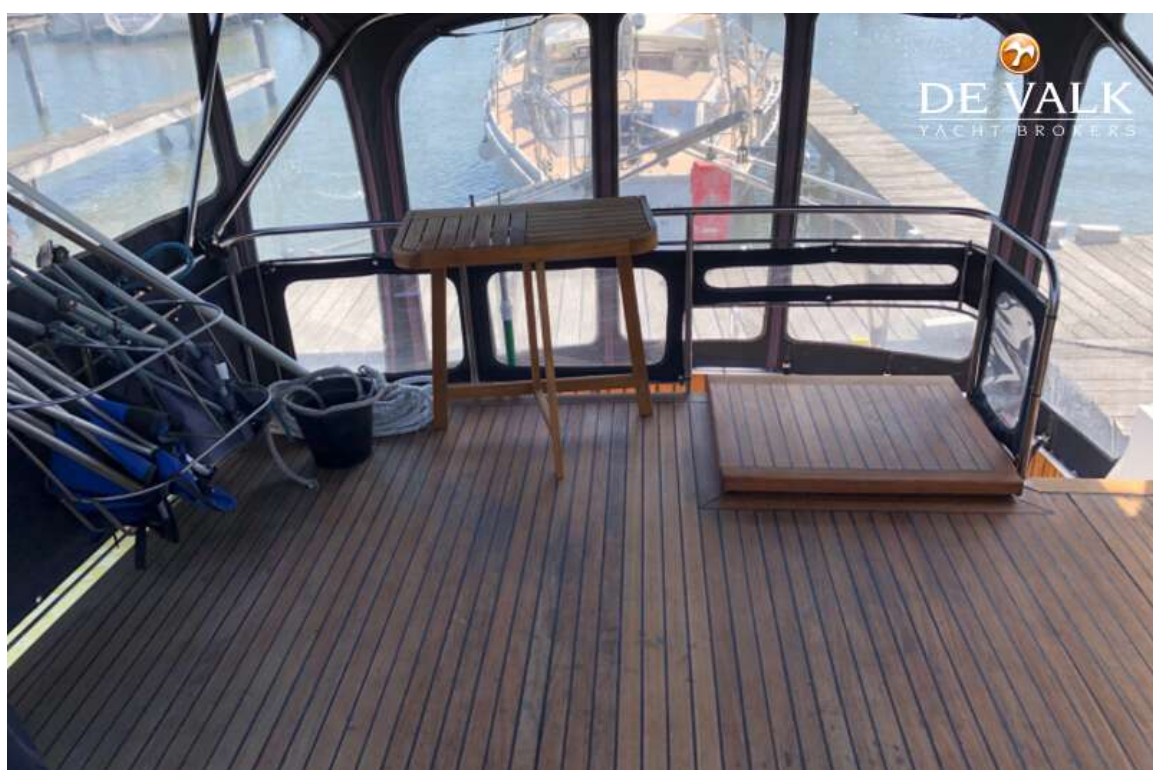




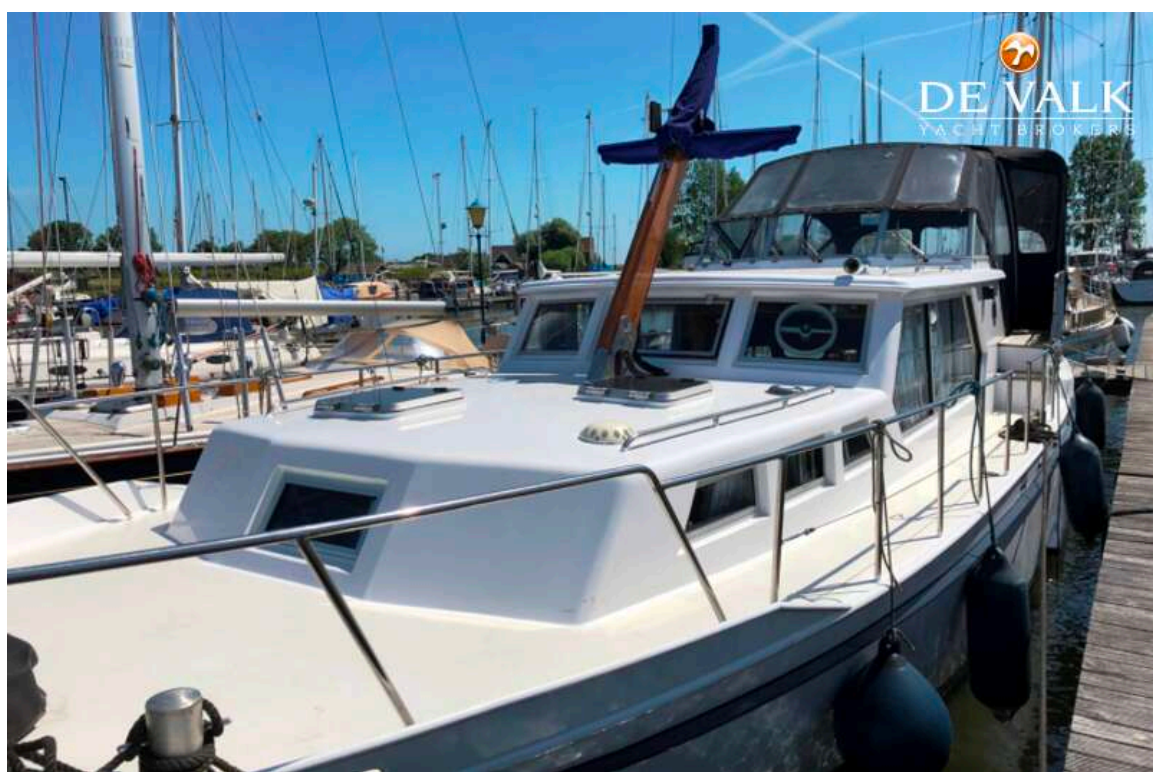
UTOPIA 14.40

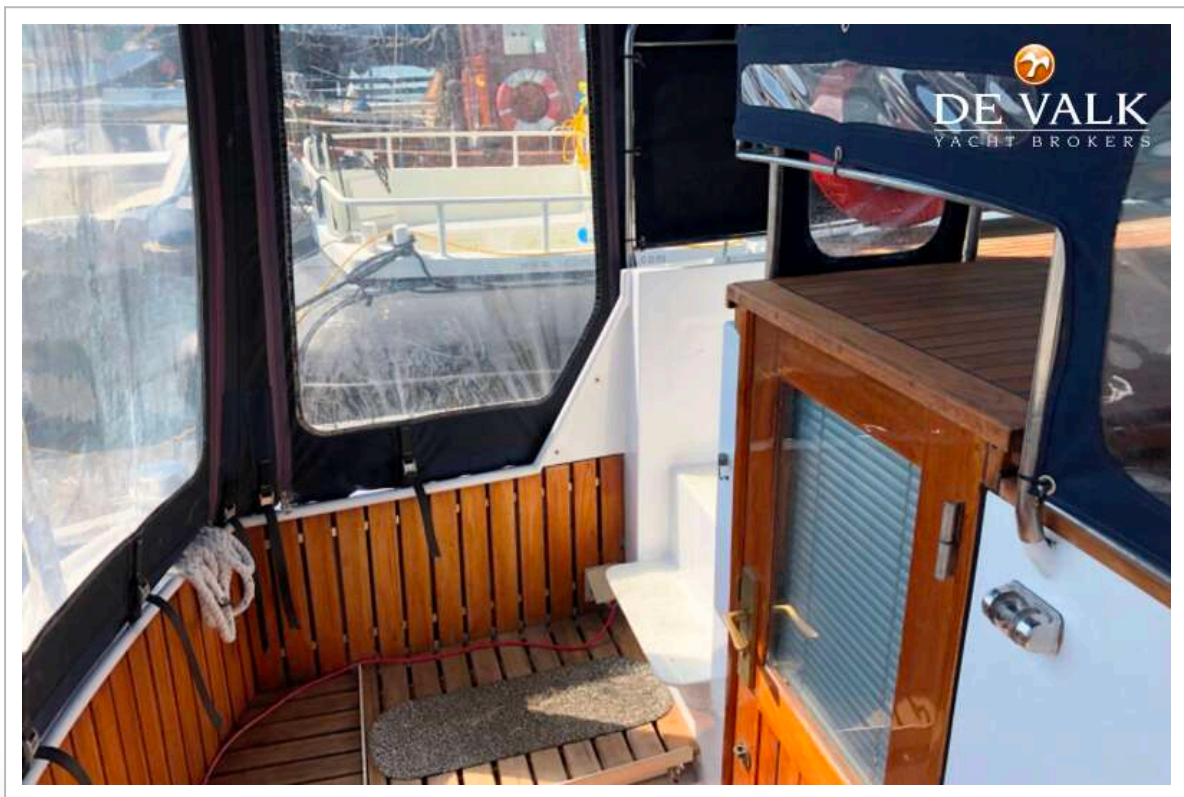


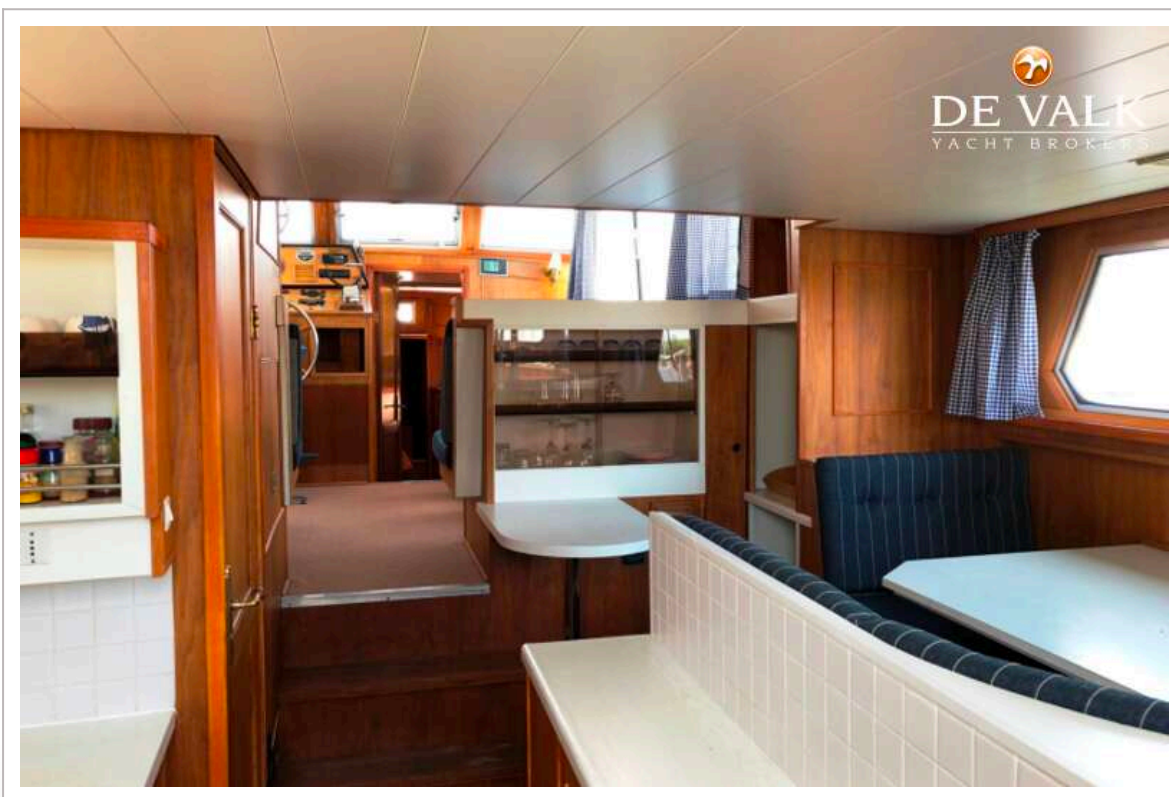


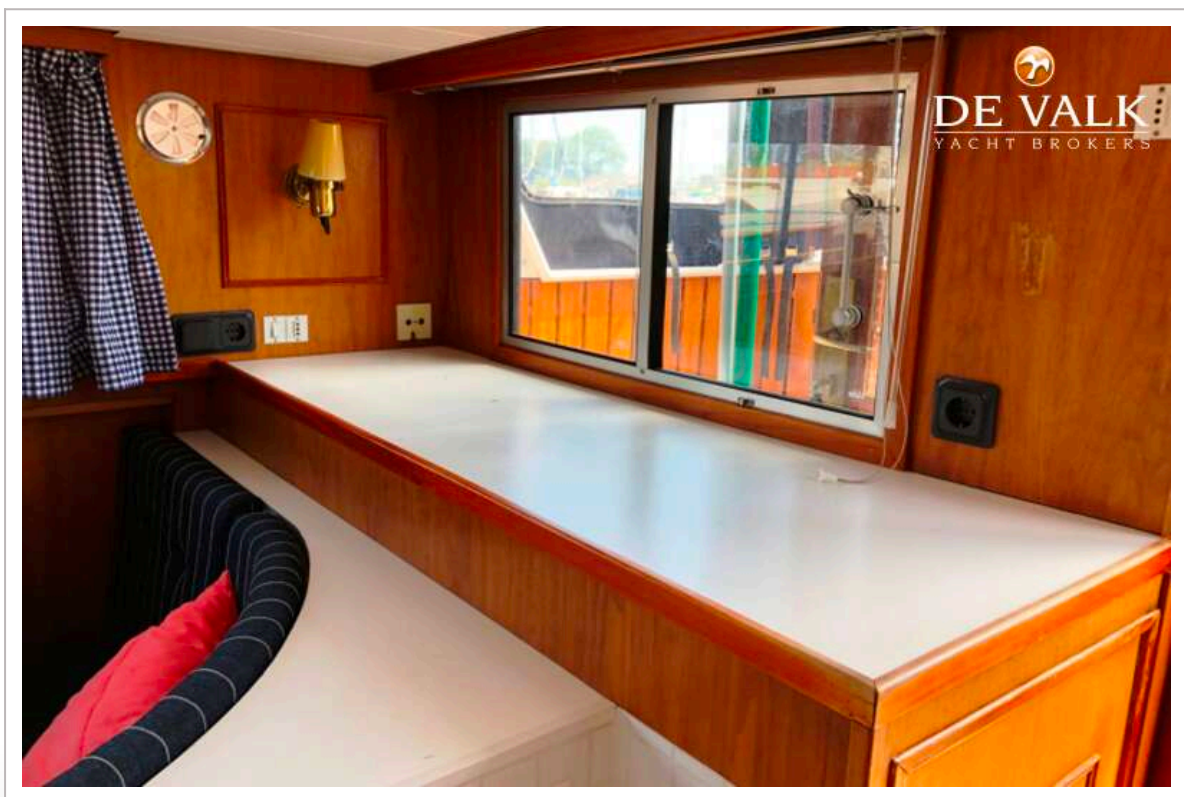




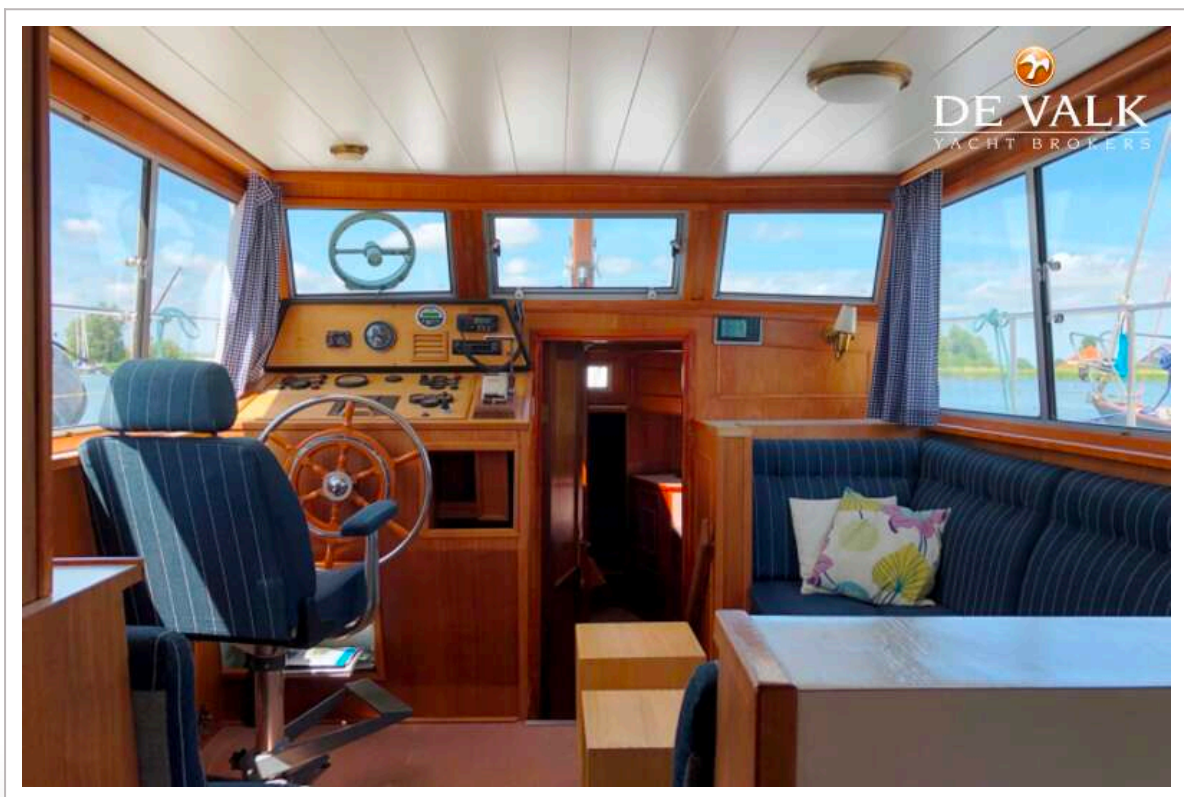
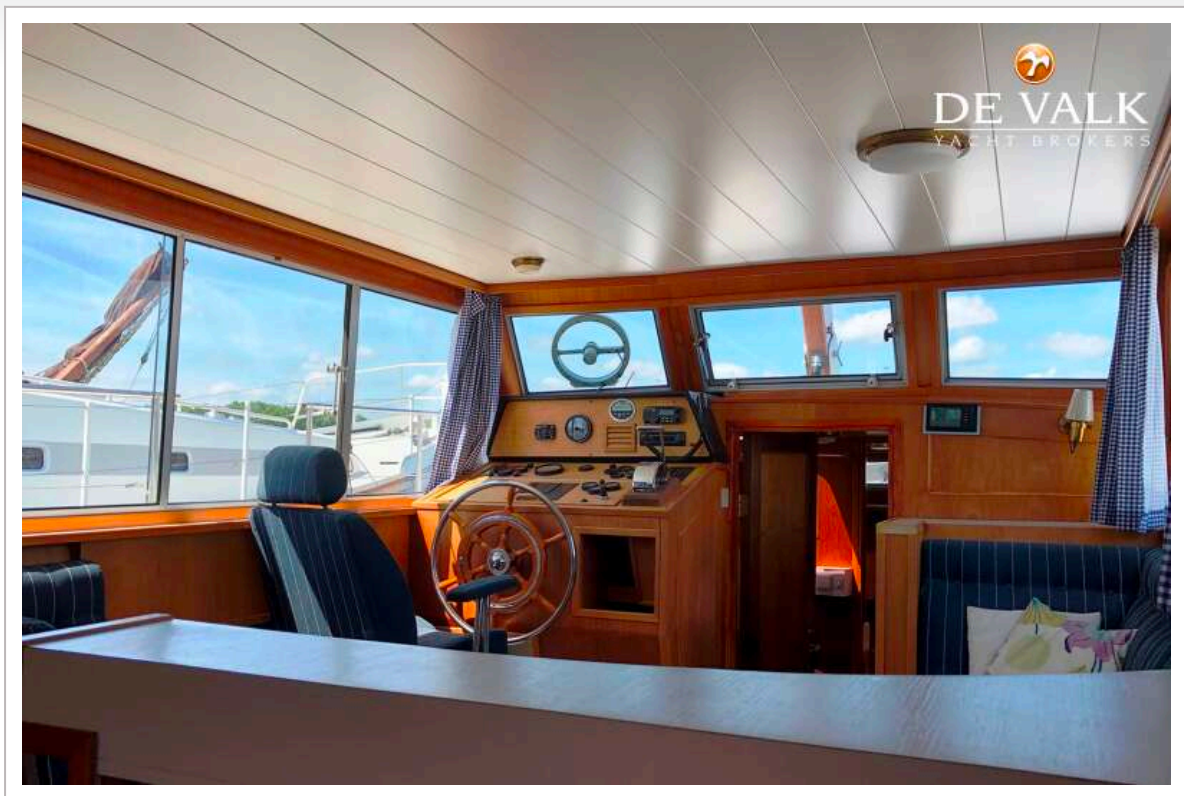




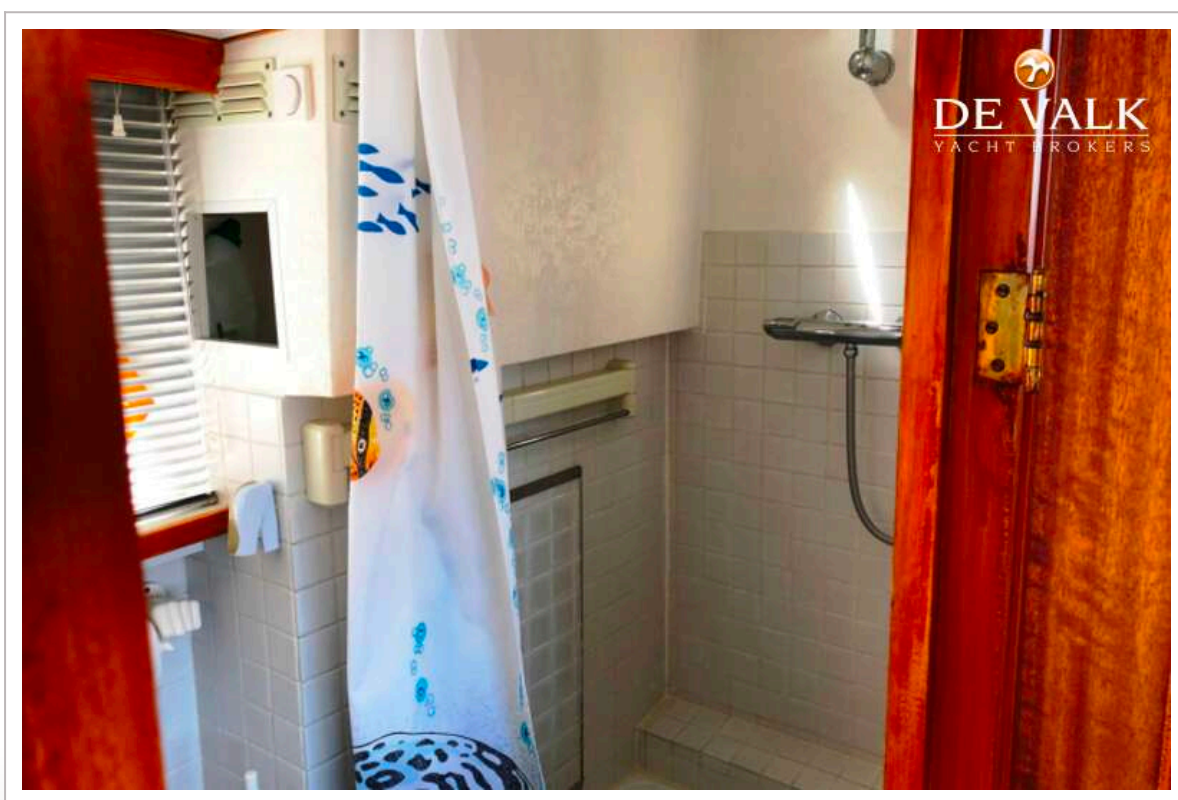
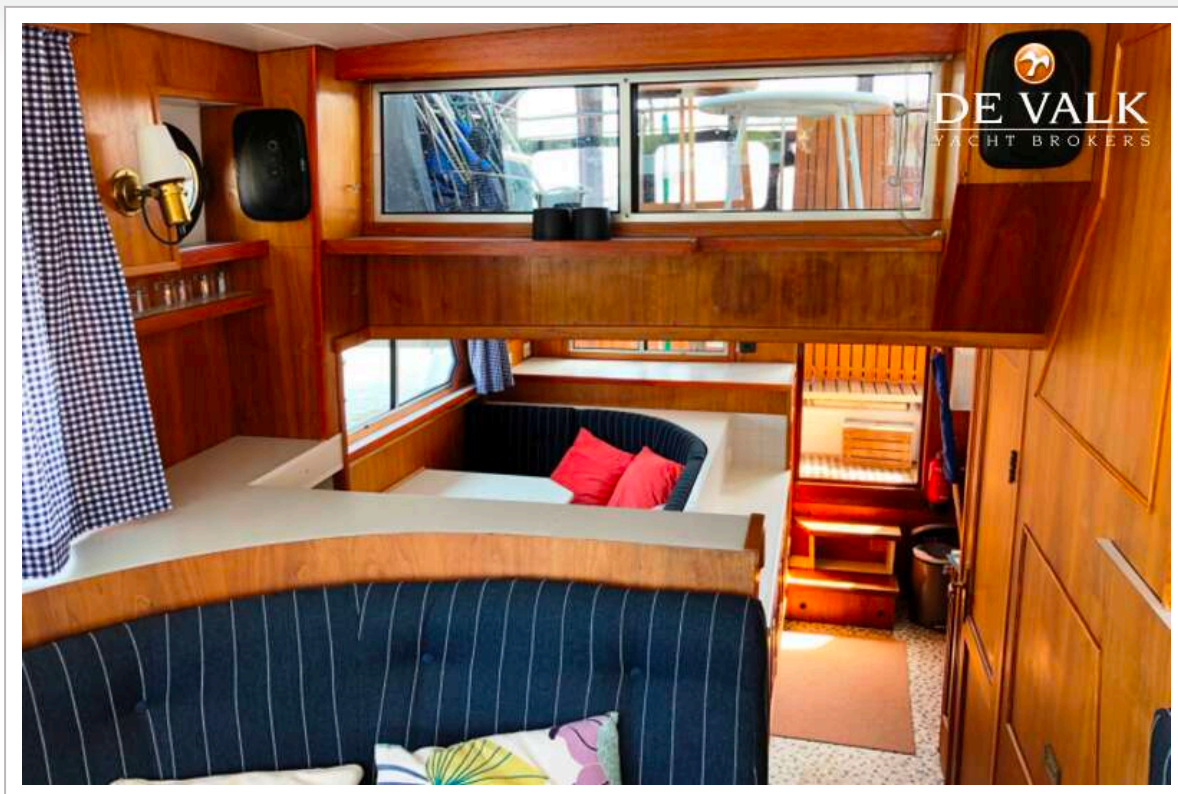




UTOPIA 14.40



UTOPIA 14.40



UTOPIA 14.40

