



BAVARIA 37 CRUISER



BAVARIA 37 CRUISER

BROKER'S COMMENTS

Bavaria 37 Cruiser from her first and only owner. Good handling and sail performance from the easy to handle stoway Elvström sails. Safe due to handling the rig from the cockpit, so ideal for short-handed sailing. The Bavaria 37 Cruiser offers enough stowage space below and on deck. Two cabin layout for family cruising with heating and other comforts. She comes with Raymarine instruments, bowthruster and two Lewmar electric winches.

Reinier van der Wolf

SPECIFICATIONS

Dimensions	11.35 x 3.80 x 1.60 (m)	Builder	Bavaria Yachtbau GmbH, Giebelstadt
Built	2005	Cabins	2
Material	GRP	Berths	6
Engine(s)	1 x Volvo Penta D1-30 diesel	Hp/Kw	29.00 (hp), 21.32 (kw)
Asking price	sold (VAT)	Lying	at sales office

CONTACT

Sales office	De Valk Monnickendam B.V.	Telephone	+31 (0)299 65 63 50
Address	Hoogedijk 6 1145 PM Katwoude NL	E-mail	monnickendam@devalk.nl

DISCLAIMER

These particulars are given in good faith as supplied but cannot be guaranteed.



BAVARIA 37 CRUISER

GENERAL

Model	BAVARIA 37 CRUISER
Type	sailing yacht
LOA (m)	11,35
LWL (m)	9,82
Beam (m)	3,80
Draft (m)	1,60
Air draft (m)	16,00
Headroom (m)	1,90
Year built	2005
Builder	Bavaria Yachtbau GmbH, Giebelstadt
Country	Germany
Designer	J&J Design
Displacement (t)	6,9
CE norm	A
Hull material	GRP
Hull colour	white
Hull shape	round-bilged
Keel type	fin keel
Superstructure material	GRP
Rubbing strake	aluminum
Deck material	GRP
Deck finish	non-skid moulded in
Superstructure deck finish	non-skid moulded in
Cockpit deck finish	teak
Antifouling (year)	2018
Window frame	aluminium
Window material	perspex
Deckhatch	3x
Portholes	aluminium
Fuel tank (litre)	polyethylene 150



BAVARIA 37 CRUISER

Level indicator (fuel tank)	at steering position
Freshwater tank (litre)	polyethylene 210
Level indicator (freshwater)	Bavaria Yacht display
Blackwater tank (litre)	polyethylene 17
Blackwater tank extraction	deck extraction + uw line
Wheel steering	cable steering Lewmar
Emergency tiller	yes

ACCOMMODATION

Cabins	2
Berths	6
Interior	mahogany
Floor	teak and holly
Saloon	yes
Headroom saloon (m)	1,90
Heating	diesel ducted hot air Webasto Airtop
Chart table	yes
Aft Cabin	yes
Galley	yes
Countertop	plastic
Sink	stainless steel 2x
Cooker	calor gas Two burner, Bavaria Yachts
Oven	Bavaria Yachts
Fridge	Waeco
Hot water system	220V + engine Boiler 15 ltr.
Water pressure system	electrical
Owners cabin	double bed
Bed length (m)	orthopedic mattresses 2,10 x 2,10
Wardrobe	hanging and drawers
Bathroom	shared
Toilet	shared



BAVARIA 37 CRUISER

Toilet system	manual Jabsco
Wash basin	at the toilet
Shower	
Guest cabin 1	double bed
Wardrobe	hanging and shelves

MACHINERY

No of engines	1
Make	Volvo Penta
Type	D1-30
HP	29
kW	21,32
Fuel	diesel
Year installed	2005
Consumption (l/hr)	3
Engine hours	731,5
Engine cooling system	freshwater heat exchanger
Drive	sail-drive
Saildrive seal	11-11-2013
Engine controls	bowden cable
Gearbox	mechanical
Bowthruster	electric Side-Power SP 55
Exhaust	watercooled
Propeller type	fixed
Propeller shaft material	stainless steel
Manual bilge pump	in cockpit Pump 1038
Electric bilge pump	yes
Electrical installation	12/220v
Batteries	3x
Start battery	1x
Service battery	1x (2016)



BAVARIA 37 CRUISER

Bowthruster battery	1x
Battery monitor	yes
Battery charger	Quick
Shorepower	with cable
Extra info	aluminium sink anode

NAVIGATION

Compass	Plastimo
Depth sounder/log	Raymarine Tridata ST60
Windset	Raymarine ST60 WIND
VHF	Raymarine
Autopilot	Raymarine ST6001 SmartPilot
GPS	on steering pedestal Garmin GPS 72
Navigation lights	yes

EQUIPMENT

Sprayhood with grab rail	yes
Cockpit cover	yes
Winter cover	yes
Cockpit cushions	yes
Cockpit table	yes
Bathing platform	yes
Boarding ladder	stainless steel
Deck shower	yes
Anchor	CQR Plough 18 kg
Sea railing	wire
Grab rail (superstructure)	stainless steel
Railing side opening gates	2 X
Pushpit	stainless steel
Pulpit	stainless steel
Lifejackets	yes



BAVARIA 37 CRUISER

Danbuoy	inflatable
Safety lines on deck	yes
Radar reflector	yes
Mooring lines	yes
TV	yes
TV receiver	yes
Clock - barometer	yes
Fire extinguisher	yes
Latest extinguisher survey	29-8-2018

RIGGING

Rigging	sloop
Standing rigging	wire
Brand mast	Seldén
Material mast	aluminium
Spreaders	2 X
Mainsail	2006, Elvtrom
Stoway mast	yes
Genoa	2006, Elvstrom
Genoa furler	Furlex 200S
Reefing System	main in-mast furling
Backstay adjuster	tackle
Boomvang	gasspring Selden Rodkicker
Genoa sheetwinches	Electric 2x Lewmar 44 ST
Multifunctional winches	2x Lewmar 30 ST
Spi-pole	aluminium



BAVARIA 37 CRUISER



BAVARIA 37 CRUISER



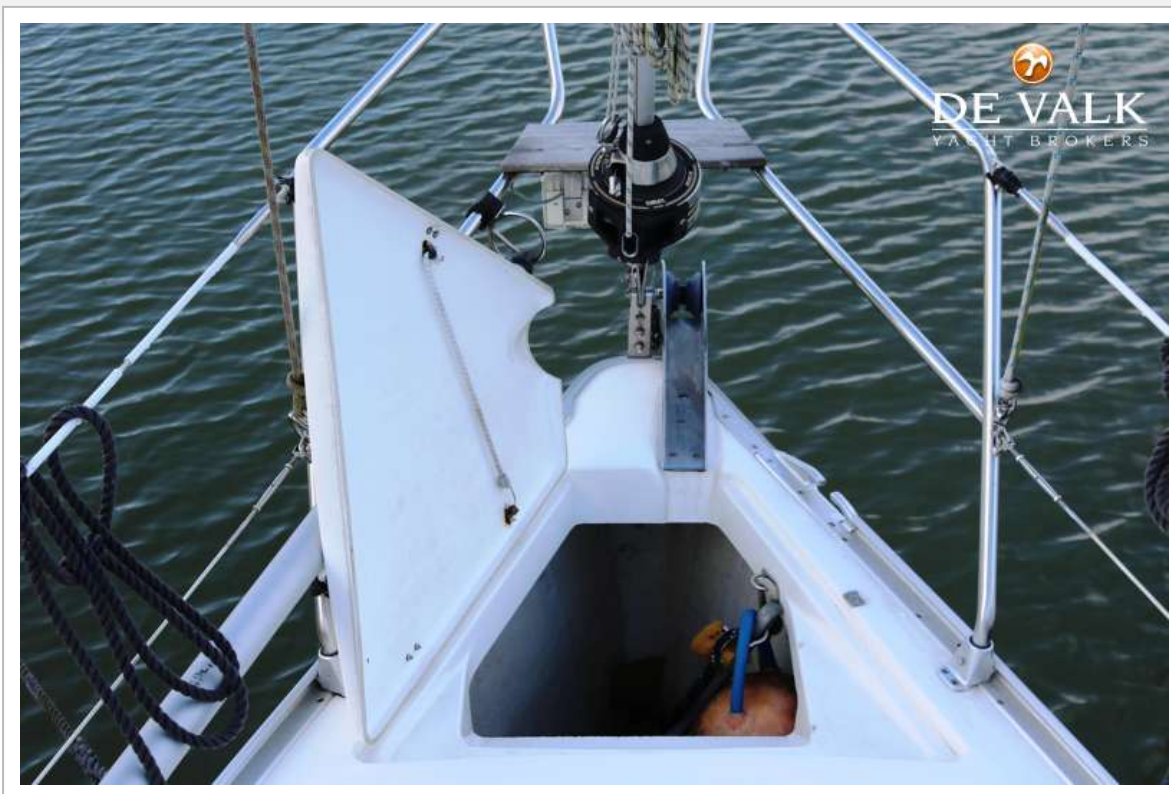
BAVARIA 37 CRUISER



BAVARIA 37 CRUISER



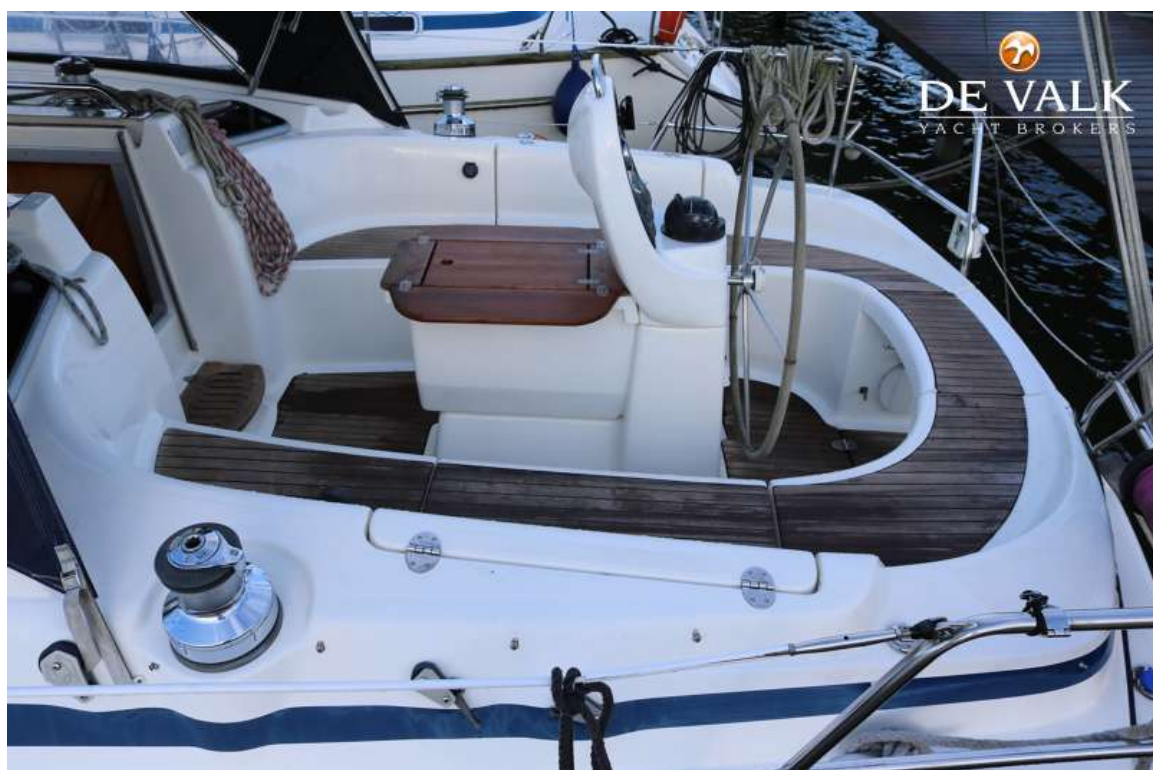
BAVARIA 37 CRUISER



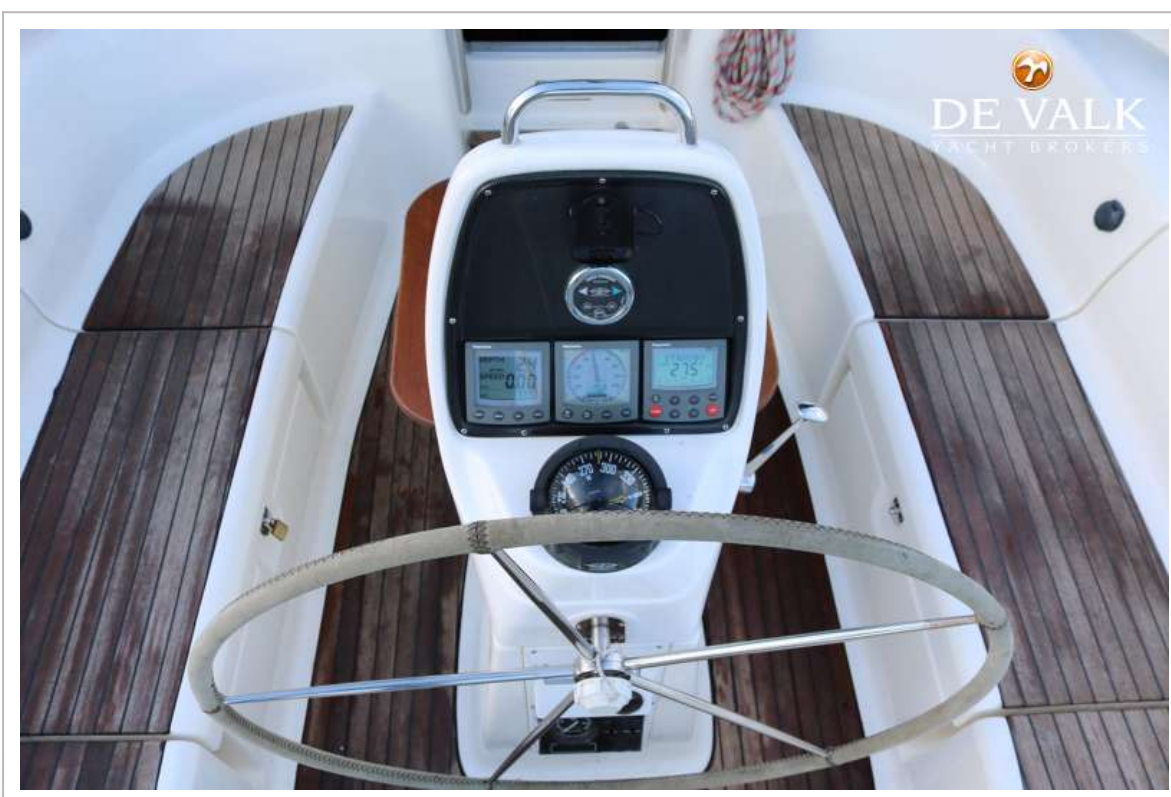
BAVARIA 37 CRUISER



BAVARIA 37 CRUISER



BAVARIA 37 CRUISER



BAVARIA 37 CRUISER



BAVARIA 37 CRUISER



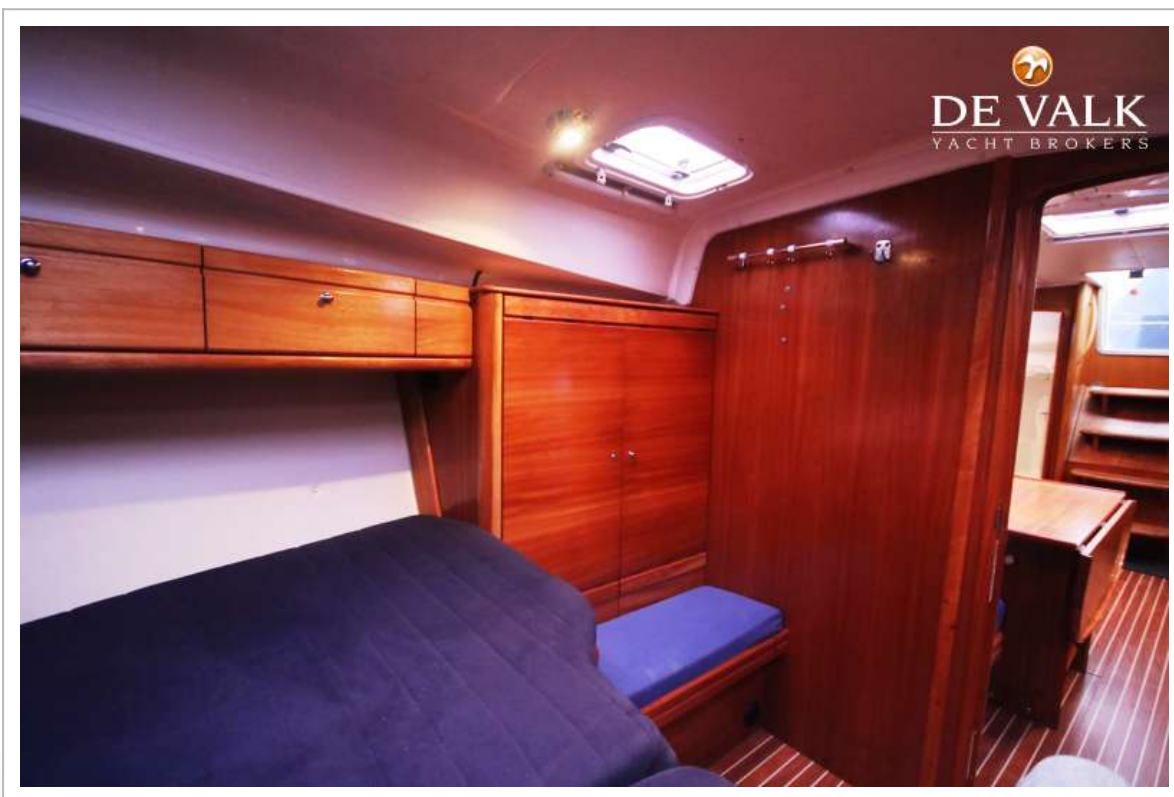
BAVARIA 37 CRUISER



BAVARIA 37 CRUISER



BAVARIA 37 CRUISER



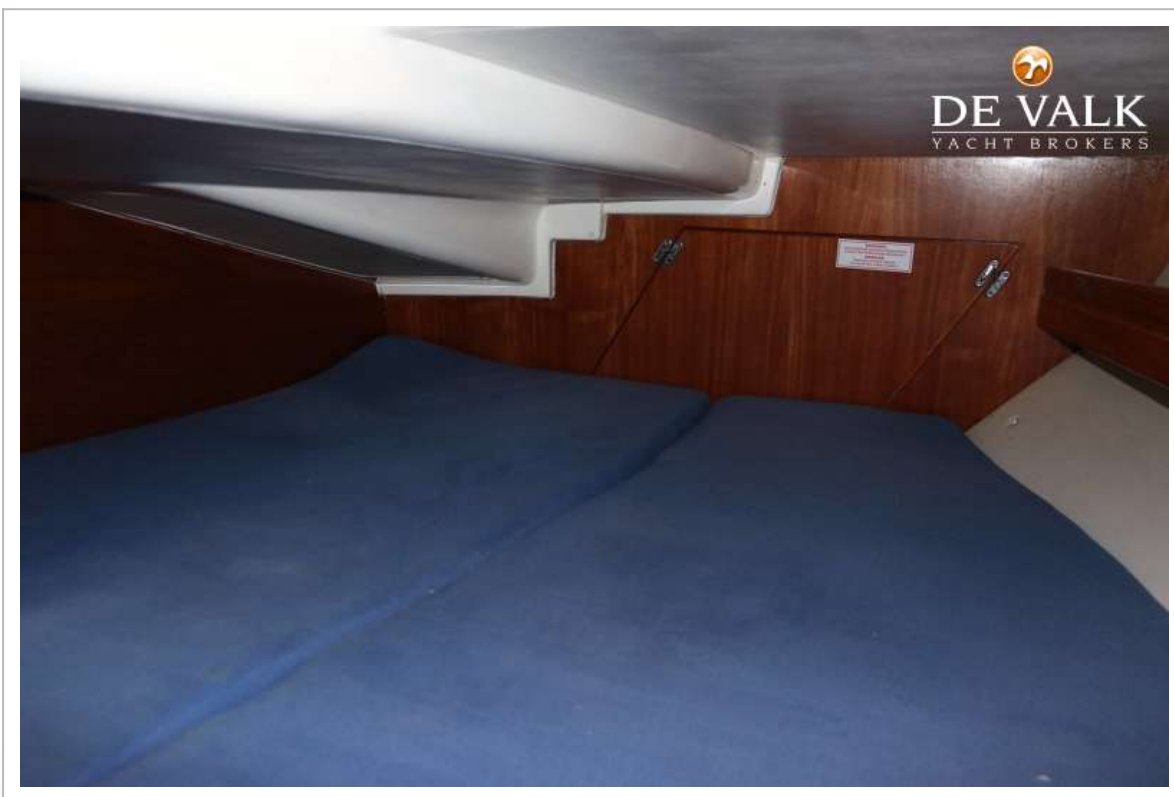
BAVARIA 37 CRUISER



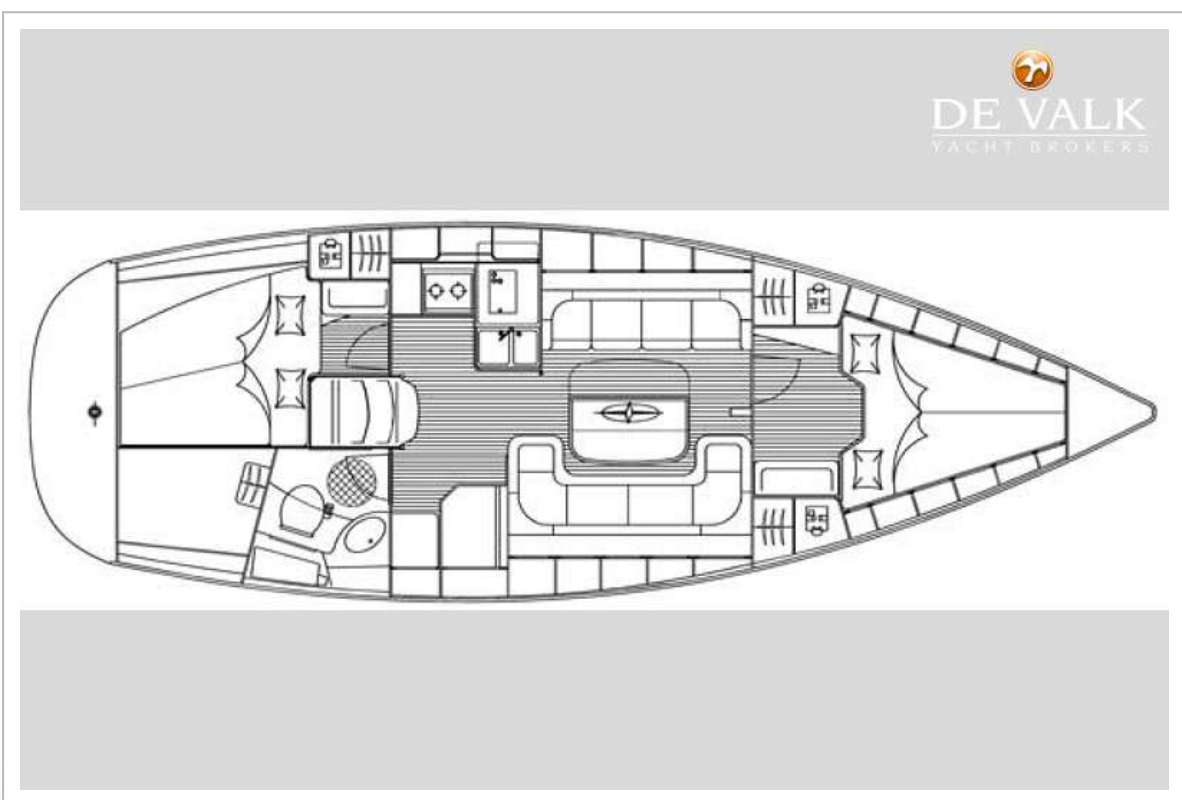
BAVARIA 37 CRUISER



BAVARIA 37 CRUISER



BAVARIA 37 CRUISER



BAVARIA 37 CRUISER

