



## NELSON 40 PILOT

## BROKER'S COMMENTS

Classic and unique rescue ship with a rich history. Built for the KNZHRM Terschelling. This Nelson 40 has been restored to her full glory by the famous Yard 't Kromhout Amsterdam. This Nelson 40 is particularly suitable so sail comfortable on open water, due to the 2 recent Solé diesel engines, 155 HP each, and the very strong hull. Double glass, strong heating and the possibility for on board showering, makes this vessel not only a stylish appearance but also nice to sail in the winter.

*Sander van der Voorn*

## SPECIFICATIONS

<b>Dimensions</b>	13.00 x 3.65 x 1.40 (m)	<b>Builder</b>	Vosper Thornycroft, Southampton GB
<b>Built</b>	1968	<b>Cabins</b>	1
<b>Material</b>	GRP	<b>Berths</b>	3
<b>Engine(s)</b>	2 x Solé diesel	<b>Hp/Kw</b>	2 x 155.00 (hp), 113.93 (kw)
<b>Asking price</b>	sold (VAT )	<b>Lying</b>	at sales office

## CONTACT

<b>Sales office</b>	De Valk Monnickendam B.V.	<b>Telephone</b>	+31 (0)299 65 63 50
<b>Address</b>	Hoogedijk 6 1145 PM Katwoude NL	<b>E-mail</b>	monnickendam@devalk.nl

## DISCLAIMER

These particulars are given in good faith as supplied but cannot be guaranteed.



## GENERAL

Model	NELSON 40 PILOT
Type	motor yacht
LOA (m)	13,00
Beam (m)	3,65
Draft (m)	1,40
Headroom (m)	2,00
Year built	1968
Launched	1969
Builder	Vosper Thornycroft, Southampton GB
Country	Great Britain
Designer	John Askam
Displacement (t)	13
CE norm	NA
Hull material	GRP
Hull colour	blue
Hull thickness (mm)	50
Hull shape	round-bilged
Superstructure material	wood epoxy
Rubbing strake	rubber
Deck material	GRP
Deck finish	Treadmaster
Superstructure deck finish	paint
Cockpit deck finish	teak
Antifouling (year)	2018
Window frame	aluminium
Window material	double glazing Gedo
Deckhatch	4
Portholes	6 x Hora
Radar arch	non collapsible
Mast can be lowered	manual



Fuel tank (litre)	GRP 1200 3 tanks
Level indicator (fuel tank)	3 x
Freshwater tank (litre)	polyethylene 2 x 215 (Vetus)
Wheel steering	mechanical
Inside helm position	yes

## ACCOMMODATION

Cabins	1
Berths	3
Interior	teak
Floor	teak and holly
Open cockpit	yes
Pilot house/deck saloon	yes
Headroom saloon (m)	2,00
Heating	diesel ducted hot air Eberspächer
Dinette	in saloon
Opening door to cockpit	with double glazing
Galley	yes
Countertop	Duropal
Sink	stainless steel
Cooker	calor gas 3 burner
Fridge	Isotherm
Freezer	in Fridge
Hot water system	220V + engine Isotemp
Water pressure system	electrical Pressurized water pump
Owners cabin	double bed
Bed length (m)	approx. 2 meter
Wardrobe	hanging and shelves
Bathroom	separate
Toilet	shared
Toilet system	manual Jabsco



Wash basin	in the bathroom
Shower	shared
Guest cabin 1	single bed
Bed length (m)	approx. 1,85 meter

## MACHINERY

No of engines	2
Make	Solé
HP	155,00
kW	113,93
Fuel	diesel
Year installed	2009
Maximum speed (kn)	18
Engine hours	909 / 753
Engine cooling system	freshwater heat exchanger
Drive	shaft
Engine controls	bowden cable
Gearbox	mechanical
Exhaust	watercooled
Propeller shaft material	stainless steel
Shaft lubrication	grease
Generator	wet exhaust Multipower 4 KW
Running hours generator	199,5
Start battery	yes
Service battery	4 x 200Ah Varta
Generator battery	yes
Battery monitor	Xantrex
Battery charger	Victron Energie Skylla-TG 24V-25Amp, Victron Bluepower 12v-15Amp
Inverter	1 24 Volt - 12 Volt
Battery charger/inverter	Vetus 12Volt - 2000 W, 24 Volt - 50 Amp



Shorepower with cable

## NAVIGATION

Depth sounder	Raymarine ST40
VHF	Sailer compact VHF RT2048, Shipmate RS 8300
Autopilot	Coursmaster CM 650 serie 2
Rudder angle indicator	VDO
Radar	Koden MD3630
GPS	Furuno GPS/waas navigator GP32
Personal computer	Stentec Win GPS Solid state
PC connection	yes
Electronic chart(s)	yes
AIS receiver	yes
Navigation lights	yes
Searchlight	yes

## EQUIPMENT

Cockpit cover	Halvert 2018
Cockpit cushions	yes
Bathing platform	yes
Anchor	Bruce 20 KG
Anchor chain	yes
Windlass	electrical Vetus
Deck wash	yes
Grab rail (superstructure)	stainless steel
Wiper	2 x Exalto
Fenders	yes
Mooring lines	yes
TV	Samsung
TV receiver	yes
Radio-cd player	Pioneer DEH 4500BT



iPod connection	yes
Speakers in salon	yes
Speakers in cabin	yes
Clock - barometer	Stockburger
Fire extinguisher	yes





# NELSON 40 PILOT





# NELSON 40 PILOT











# NELSON 40 PILOT



# NELSON 40 PILOT





# NELSON 40 PILOT

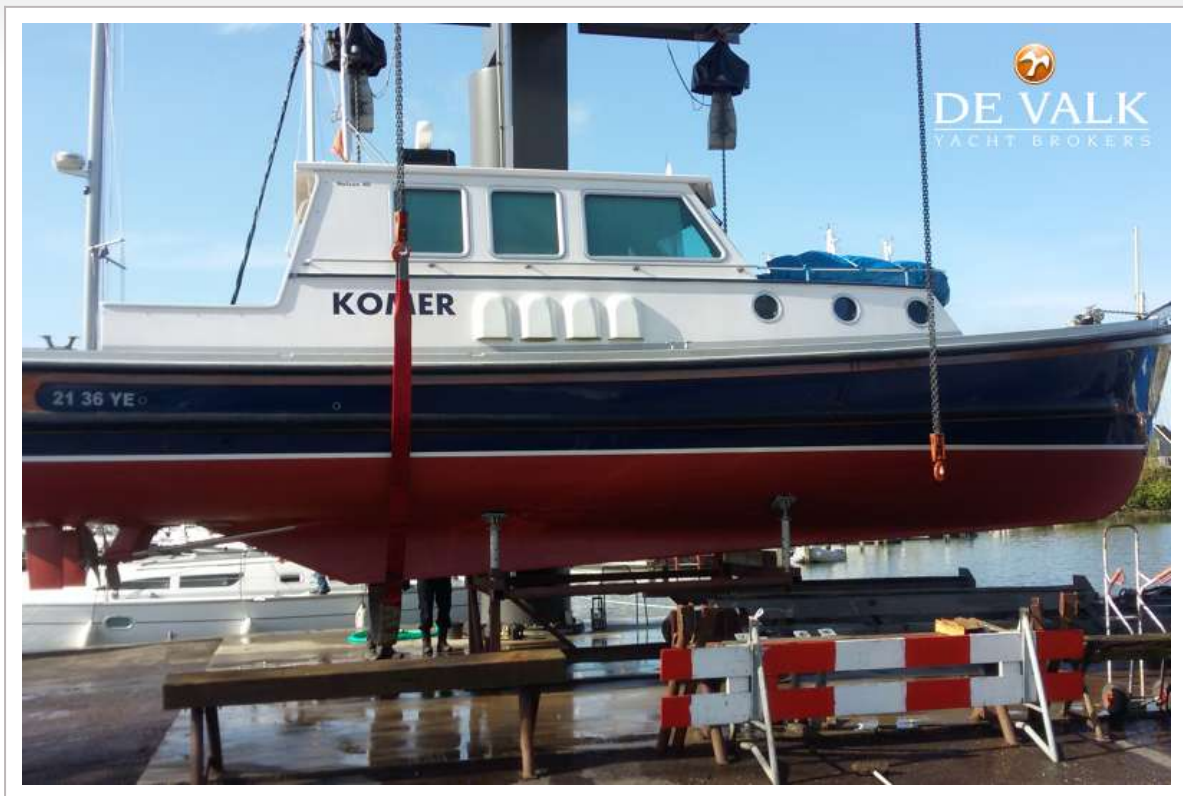




# NELSON 40 PILOT



# NELSON 40 PILOT





# NELSON 40 PILOT

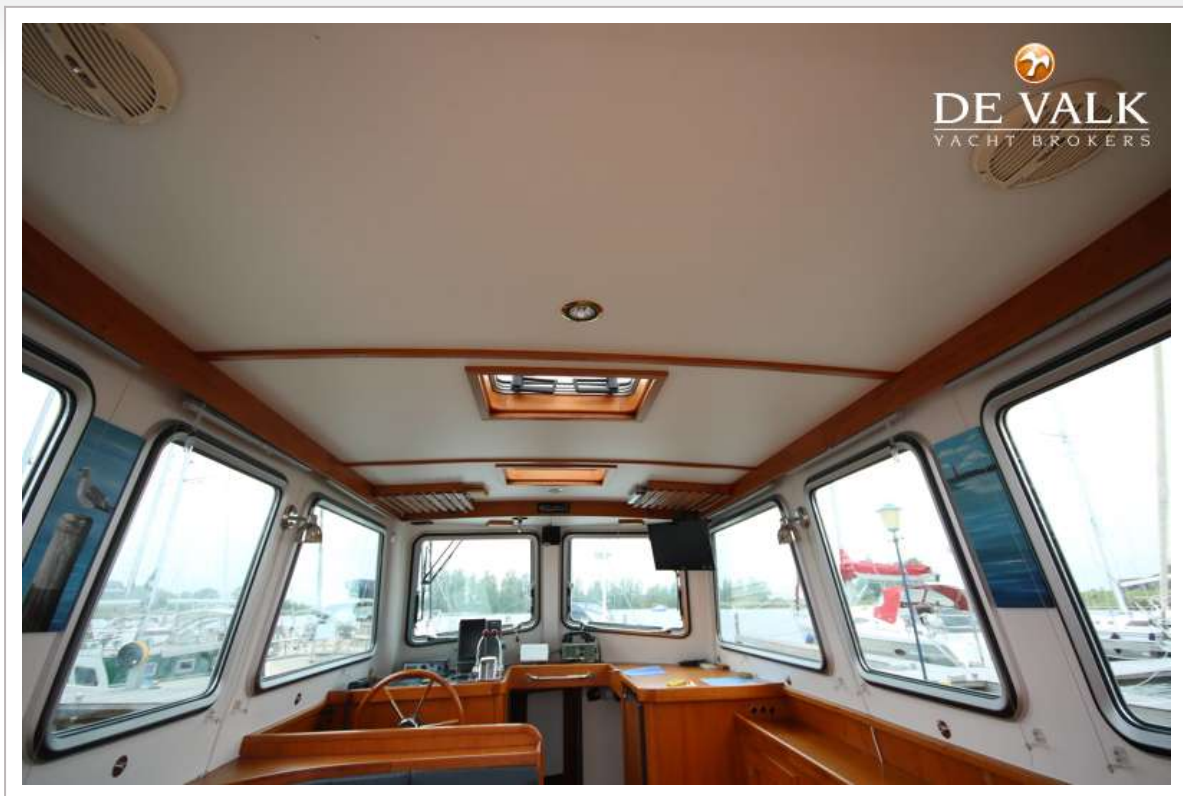


# NELSON 40 PILOT





# NELSON 40 PILOT

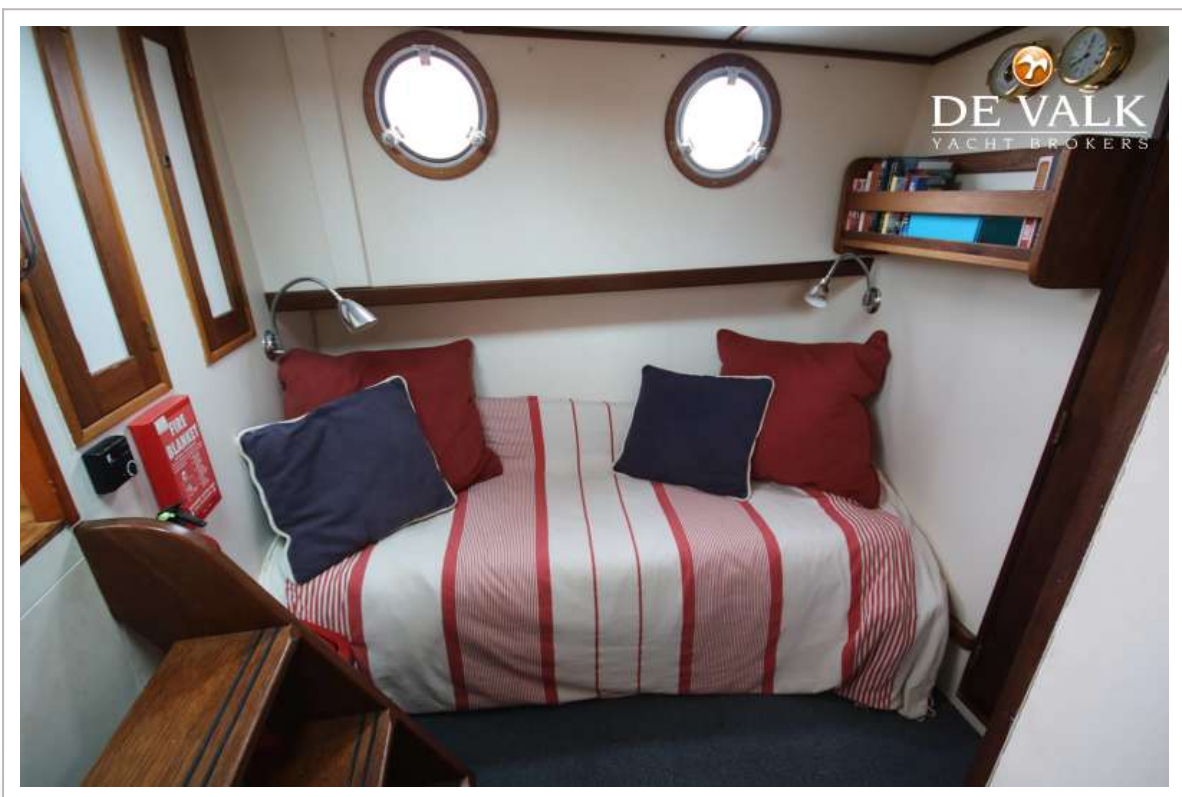


# NELSON 40 PILOT



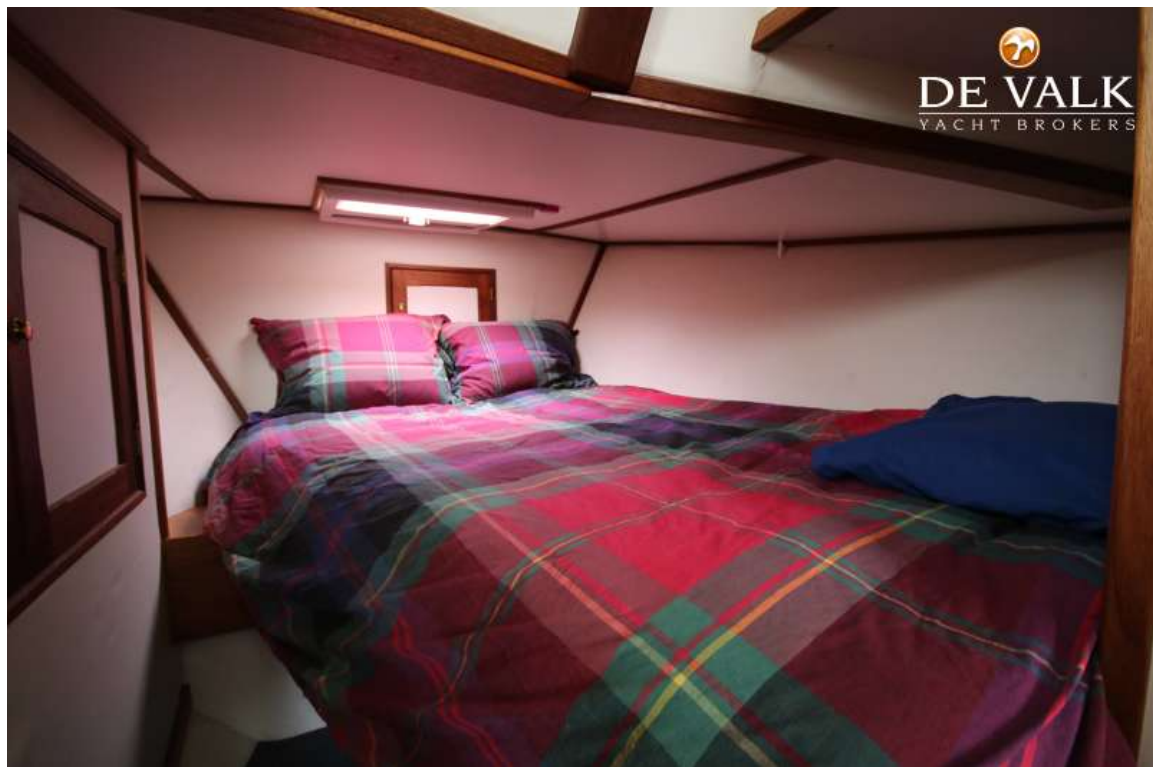


# NELSON 40 PILOT





# NELSON 40 PILOT



# NELSON 40 PILOT

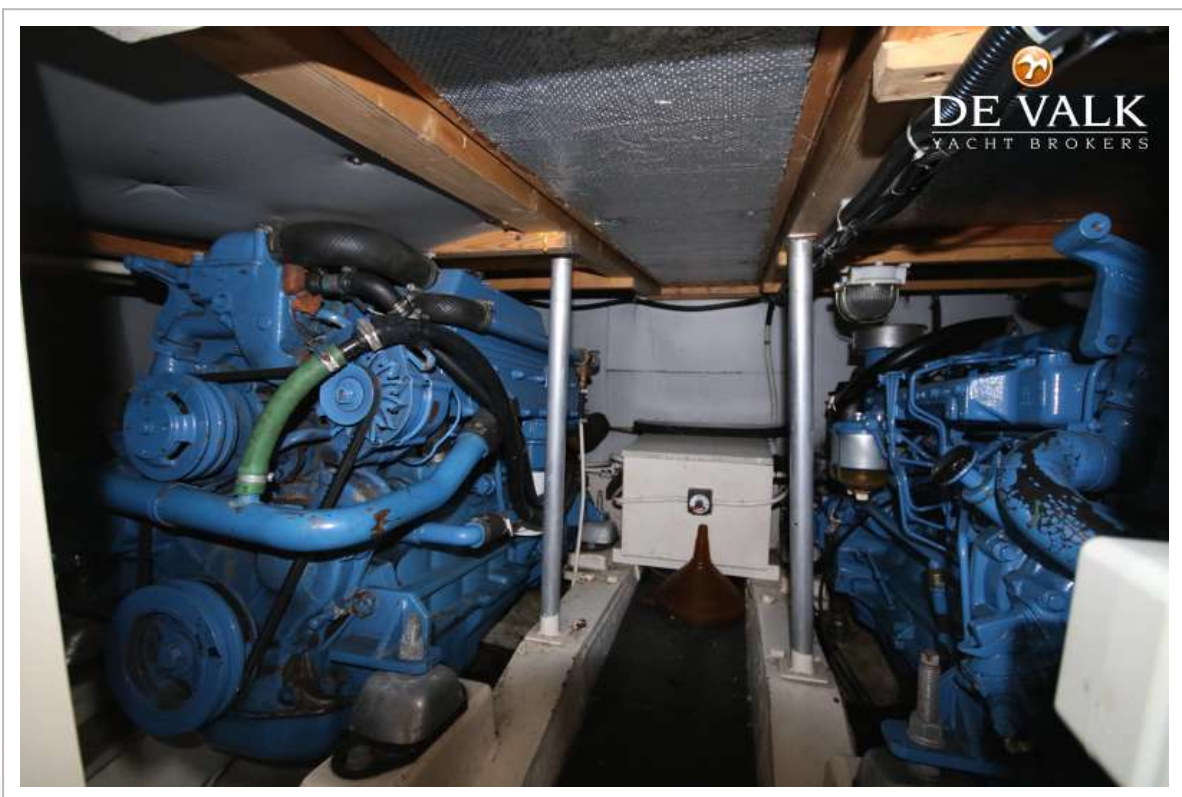


# NELSON 40 PILOT

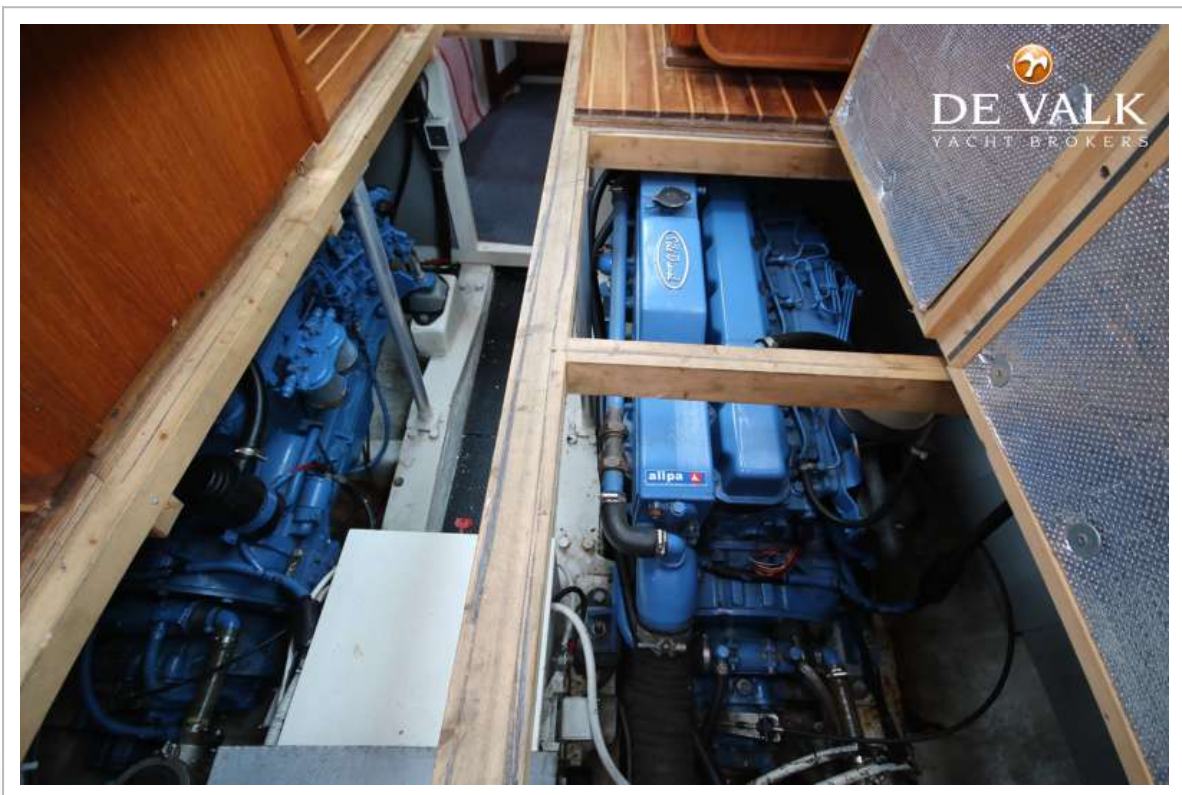
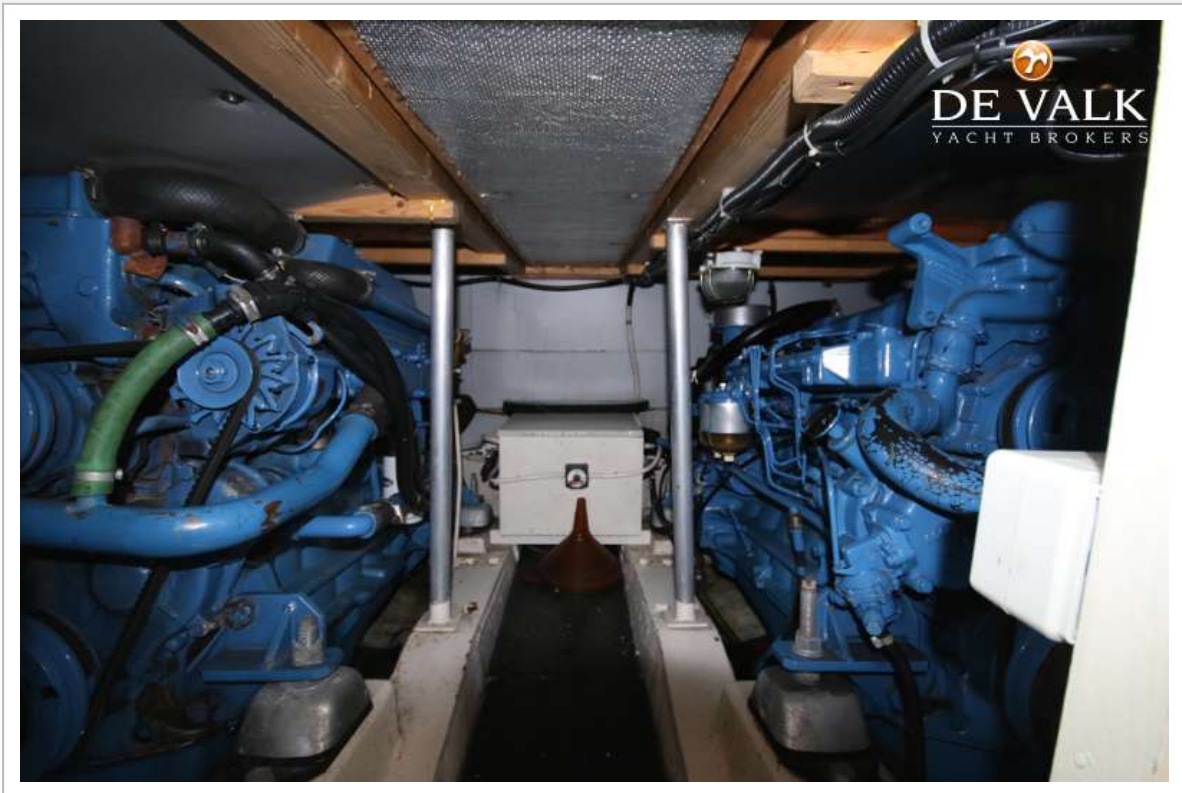




# NELSON 40 PILOT



# NELSON 40 PILOT





# NELSON 40 PILOT

