



DE VALK
YACHT BROKERS



KOOPMANS 43



DE VALK
YACHT BROKERS

BROKER'S COMMENTS

"Dick Koopmans Jr. designed this beautiful cutter rigged yacht. As all of his designs, also Skua excels in seaworthiness, speed and safety. All lines run aft to the deep cockpit and the dodger offers great protection against the elements. Thanks to her equipment e.g. furling boom, electric winches, bow thruster, Skua can easily be sailed by a small crew and even solo. Very well isolated and with a thoughtful interior, she's extremely suitable for longer journeys. This Koopmans 43 with it's gracious lines can be visited by appointment, approx. 30 minutes south of Rotterdam."

SPECIFICATIONS

Dimensions	13,20 x 4,10 x 2,00 (m)	Builder	Klaas Bood Jachtbouw
Built	2000	Cabins	2
Material	Composite	Berths	4
Engine(s)	1 x Nanni 4.220 HE-ECO diesel	Hp/Kw	50 (hp), 36 (kw)
	SOLD	Lying	not at sales office

CONTACT

Sales office	De Valk Sint Annaland	Telephone	+31 166 601 000
Address	Koelhuisweg 4	Fax	+31 (0)166 654 267
	4697 RM Sint Annaland	E-mail	sintannaland@devalk.nl
	The Netherlands		

DISCLAIMER

These particulars are given in good faith as supplied but cannot be guaranteed and cannot be used for contracts.



GENERAL

Model	KOOPMANS 43
Type	sailing yacht
LOA (m)	13,20
LWL (m)	10,71
Beam (m)	4,10
Draft (m)	2,00
Year built	2000
Builder	Klaas Bood Jachtbouw
Country	The Netherlands
Designer	Dick Koopmans Jr.
Displacement (t)	12
Ballast (tonnes)	5,2
CE norm	A
Hull material	composite
Hull colour	blue
Hull shape	round-bilged
Keel type	fin keel - stainless steel keel with lead ballast
Superstructure material	epoxy and foam core
Rubbing strake	stainless steel
Deck material	epoxy and foam core
Deck finish	teak
Superstructure deck finish	paint
Cockpit deck finish	teak
Antifouling (year)	Interspeed + copper; April 2023
Dorades	2 x stainless steel
Window frame	aluminium - Gebo
Window material	polycarbonate
Deckhatch	3 x Romar & 2 x Lewmar
Portholes	aluminium 2 x
Insulation	foam (deck) & Red Cedar (hull)



Radar arch	non collapsible
Fuel tank (litre)	epoxy - 350
Level indicator (fuel tank)	electronic
Fuel daytank (litre)	epoxy - 40
Level indicator (daytank)	gauge glass
Freshwater tank (litre)	epoxy - 400
Level indicator (freshwater)	electronic
Blackwater tank (litre)	epoxy - 75
Blackwater tank extraction	deck extraction + uw line
Wheel steering	Double spoke leather covered stainless steel Lewmar wheel
Outside helm position	cable steering Whitlock Cobra steering pedestal
Emergency tiller	yes
More info on hull	Advantage of an epoxy composite construction; very sturdy construction - Red Cedar core with epoxy laminate (4 x 600gr). Starting at the bow up to the keel sole and up to approx. 20 cm above the waterline, the hull is reinforced with Twaron fibre for extra sturdiness / collision protection. Epoxy composite also adds insulation thus very little condensation and well suited for hot and colder climates. Also a light weight construction in comparison to aluminum and steel. Low maintenance and no corrosion or osmosis.
More info on paintwork	Hull and superstructure painted in 2009 with AWL-Grip. Polished and waxed in April 2023.
Extra info	Caulking teak deck seams serviced Sept. 2023 (where needed). Teak deck will last for some more years but end of life is coming.
Extra info	The deck and cabin roof have a sandwich construction of 2 layers of plywood with a 30 mm PVC foam core in between. The bottom of the sandwich is finished with a white plastic layer as standard. These sandwich constructions are placed on laminated deck trusses and deck scales made of solid wood. On the deck and cabin roof, the ocume plywood is laminated with a glass fabric/epoxy layer. The cabin elevations and the cockpit are made of ocume plywood, the outside of which is laminated with an epoxy/glass fabric. The cockpit is preserved below deck with an epoxy coating.

ACCOMMODATION

Cabins	2
Berths	4
Interior	American Cherry



Doghouse	yes
Saloon	with two comfy seats at starboard side
Heating	Webasto airtop 5000 diesel
Heating 2	Dickinson Alaska diesel
Navigation center	yes
Chart table	yes
Dinette	yes
Galley	yes
Countertop	Duropal
Sink	stainless steel - 2 x
Cooker	calor gas - Force 10 - 3 burners
Oven	Force 10 (Thermostat needs to be replaced)
Gas alarm	& electric remote controlled valve
Fridge	Top loader with a watercooled Isotherm compressor
Hot water system	220V + engine - 50 Liter Cleghorn boiler (heating element renewed in 2021)
Water pressure system	electrical
Owners cabin	double bed In the front cabin
Bed length (m)	2,00
Wardrobe	hanging/drawers/shelves
Bathroom	shared
Toilet	shared
Toilet system	electric (connected to the fresh water tank)
Wash basin	in the bathroom
Shower	shared - with an electric drain water pump
Extra info	Owners cabin has ample storage space in several cabinets, drawers and under the bed. New in 2017 : Slatted base Neptune mattresses & custom made flannel covers & fitted sheets in the owners cabin.
Guest cabin 1	double bed In the aft cabin
Bed length (m)	2,00
Wardrobe	shelves (cabinet could be changed back to also hanging)
Extra info	The guest cabin has ample storage space in a large cabinet, on shelves and under the bed
Wardrobe	yes



Wardrobe	yes
Extra info	Rubber hose at the cooker-devise needs to be replaced; expired since March 2022.
Extra info	All upholstery in the saloon is Alcantara fabric.
Extra info	Cantalupi Hobart IP20 interior LED lightning.

MACHINERY

No of engines	1
Make	Nanni
Type	4.220 HE-ECO
HP	50
kW	36
Fuel	diesel
Year installed	2000
Maximum speed (kn)	7,00
Cruising speed (kn)	6,00
Engine hours	2625
Engine cooling system	freshwater heat exchanger
Drive	shaft
Shaft seal	New in May 2023 - Stern tube bearing needs to be replaced due to minor radial play. New Vetus tube bearing is already present on board
Engine controls	bowden cable - new / nieuw / neu 2018
Gearbox	mechanical ; ZF-12M - new / nieuw / neu 2018
Bowthruster	electric - Vetus 80 Kgf
Exhaust	watercooled
Propeller type	feathering - Maxprop
Propeller blades	3-blades (Maxprop serviced in 2023 & new Zinc Anode from April 2023)
Propeller shaft material	stainless steel
Shaft lubrication	water - Vetus
Manual bilge pump	yes
Electric bilge pump	The front bilge pump is renewed in June 2021. A new floater switch was installed at the aft bilge pump in February 2022



Electrical installation	12V/230V
Start battery	1 x
Service battery	New in September 2023 : 4 x AGM 130Ah
Bowthruster battery	New in 2019 : 2 x 120Ah
Battery monitor	Mastervolt
Battery charger	1 x Mastervolt Mass 12V/60A & 1 x Mastervolt IVO Smart Charger 12V/25A (for bow thruster battery)
Inverter	Mastervolt Sine Wave 12V/2.000W
Battery charger/inverter	yes
Shorepower	with cable
Extra info	Secondary alternator (110Ah, new in 2023) and MASTERVOLT charge controller ensure rapid charging of the batteries when running the engine.
Extra info	Bow thruster solenoids new 2019. Fresh water heat exchanger replaced November 2019, also the water pump has been overhauled completely.
Extra info	Engine service May 2023; replaced engine oil, oil filter and fuel filter + V-belts both alternators. Oil change gearbox. Stainless Steel engine exhaust muffler new April 2023. Vetus waterlock/muffler new 2021.

NAVIGATION

Compass	Whitlock Polaris 115
Repeater	Raytheon 3 x ST60 + 1 x ST80 Multi display in cockpit for wind / log / depth. Wind display renewed April 2018.
VHF	Skanti DCS at chart table. (Hand mic needs to be replaced)
VHF handheld	ICOM
Autopilot	Raytheon ST7000
Radar	Simrad RA-41C
GPS	Leica AP-MK9 + Raytheon ST60 multi display at chart table
Navtex	Veco K41
AIS transceiver	EM-TRAK Class B AIS transceiver - new Sept. 2021
EPIRB	2017
Extra info	VHF antenna at the mast new March 2022. GPS antenna on the pushpit new April 2023. Spare (emergency) VHF antenna on radar mast.
Extra info	Raytheon instruments do not show SOG. (SOG is only displayed on GPS at interior chart table. Also: Multidisplav ST80 dodger is faded).



EQUIPMENT

Cockpit cover	dark blue
Dodger	middle window can be openend
Winter cover	has ample headroom to stand straight-up
Cockpit table	wood - teak - folding
Boarding ladder	stainless steel
Bow ladder	Stainless Steel
Anchor	Delta
Anchor chain	50 M
Anchor 2	Fortress
Anchor chain	Rope
Windlass	electrical - Horizon 1500
Deck wash	yes
Dinghy	inflatable - Lodestar
Outboard	2.5 HP Mercury
Outboard support	yes
Sea railing	wire - double
Grab rail (superstructure)	teak
Railing side opening gates	2 x
Pushpit	Stainless Steel
Pulpit	Stainless Steel
Life raft (pers)	Plastimo 4-pax.
Last life raft survey	new installed in 2017 - needs survey
Danbuoy	Jon-buoy MOB must be inspected (expired)
Rope cutter	on propeller shaft
Radar reflector	Trilens
Fenders	yes
Mooring lines	yes
Radio	yes



Cockpit speakers	yes
Speakers in salon	yes
Clock - barometer	Classic clock & barometer copper + Electronic Vetus Meteo Liner at chart table
Fire extinguisher	2 x new 2019
Extinguisher in engine room	needs survey

RIGGING

Rigging	cutter
Standing rigging	Dyform (2000)
Brand mast	Holland Spar High Performance
Material mast	aluminium coated
Spreaders	3 sets
Mainsail	North Sails (2011) : sandwich laminate full battened furling mainsail (36 m2). The sail has been coated in 2021
Mainsail cover	New in April 2023
Fully battened mainsail	yes
Cutterstay	yes
Furling boom	New in 2011 : Carbon Furlerboom (Made in Denmark). The Luff Feeder has been renewed in 2019
Main staysail	yes
Jib I	yes
Jib II	yes
Genoa	North Sails (2011) : sandwich laminate Furling Genoa (38 m2). UV strip has been renewed in 2019. The sail has been serviced, cleaned and restitched in 2022
Genoa furler	Furlex 300S
Genoa cover	Dark blue covers both sails on the furlers
Cutter furler	Furlex 200S with a North Sails (2011) sandwich laminate furling cutter Jib (22 m2). UV strip has been renewed in 2019. The sail has been serviced, cleaned and restitched in 2022
Gennaker	Kool Sails 100 m2 - like new
Stormjib	Kool Sails - like new
Reefing System	main in-boom furling

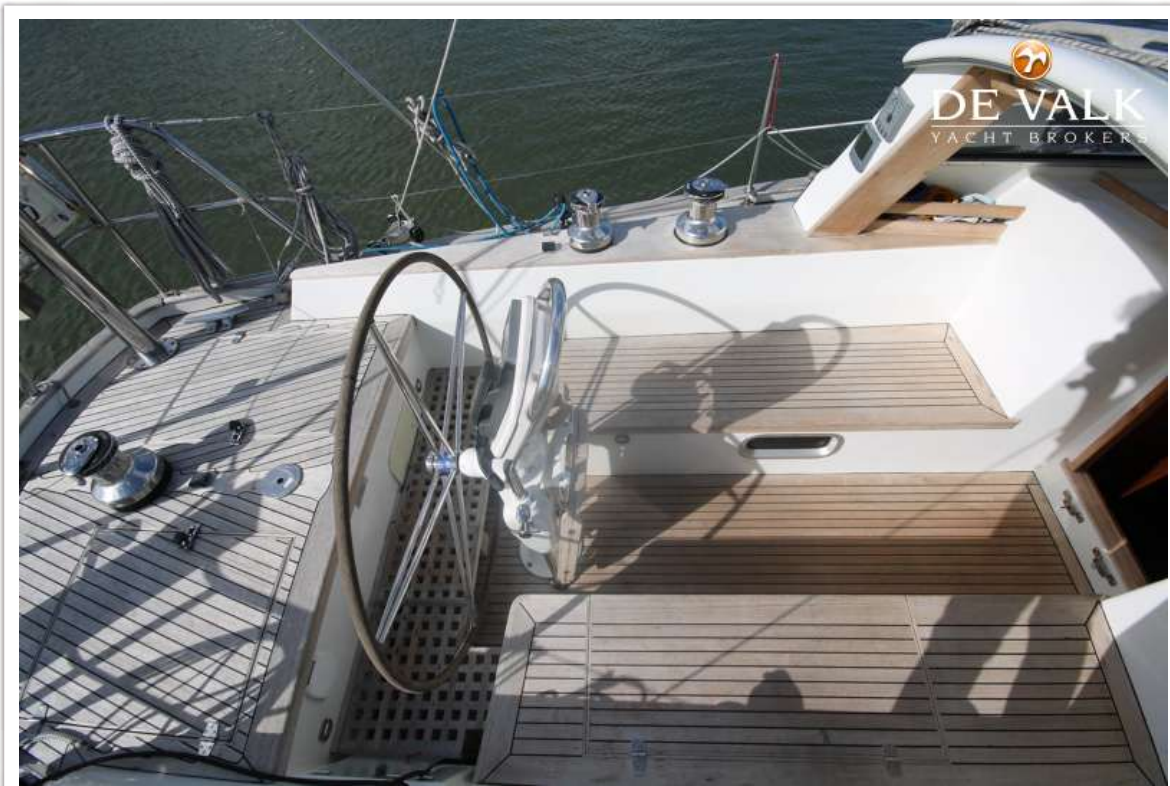


Backstay adjuster	mechanical
Boomvang	gasspring - New in 2011 (extra heavy - for the new furling boom)
Primary sheet winch	3 x Andersen 52.2 STE (electric)
Secondary sheet winch	2 x Andersen 46.2 ST
Winchcovers	yes
Spi-pole	aluminium
Extra info	New in June 2021 : Mainsail in-boom reefing line & mainsheet
Extra info	Baby Stay. Running Backstays. Stainless Steel Granny Bars mounted on Portside & Starboard side of the mast





KOOPMANS 43













KOOPMANS 43



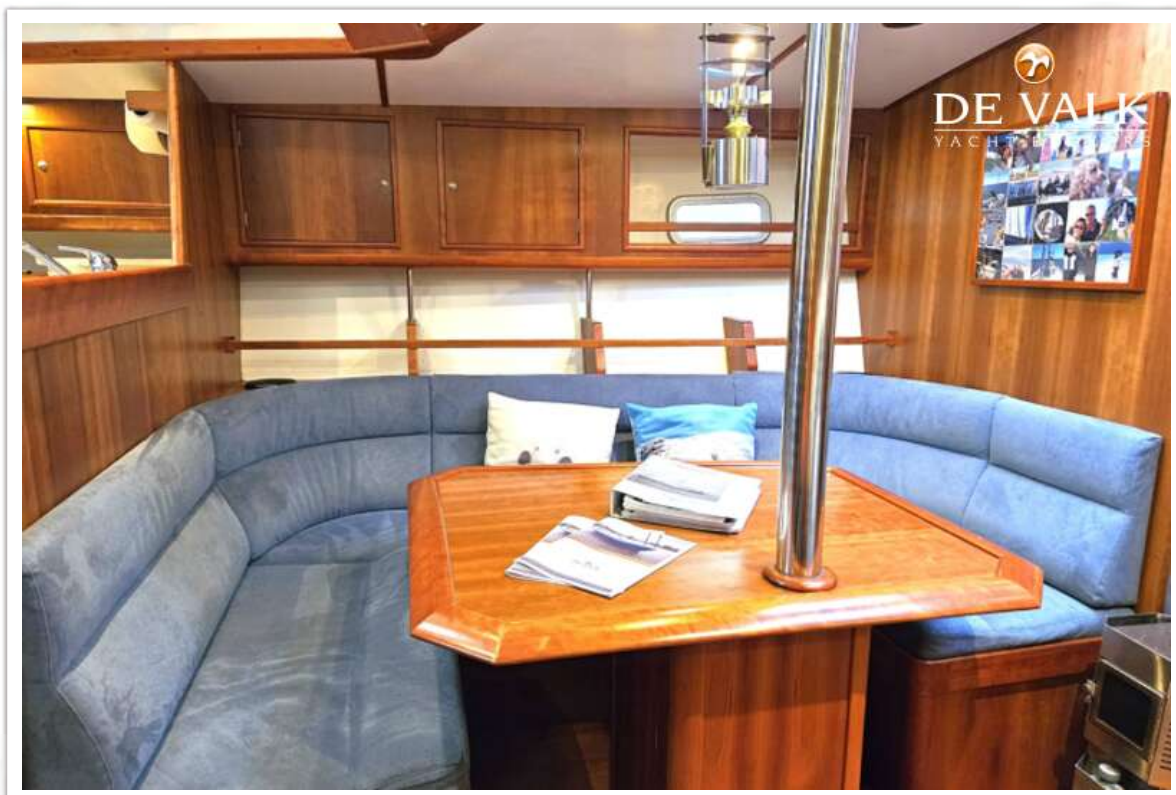
KOOPMANS 43

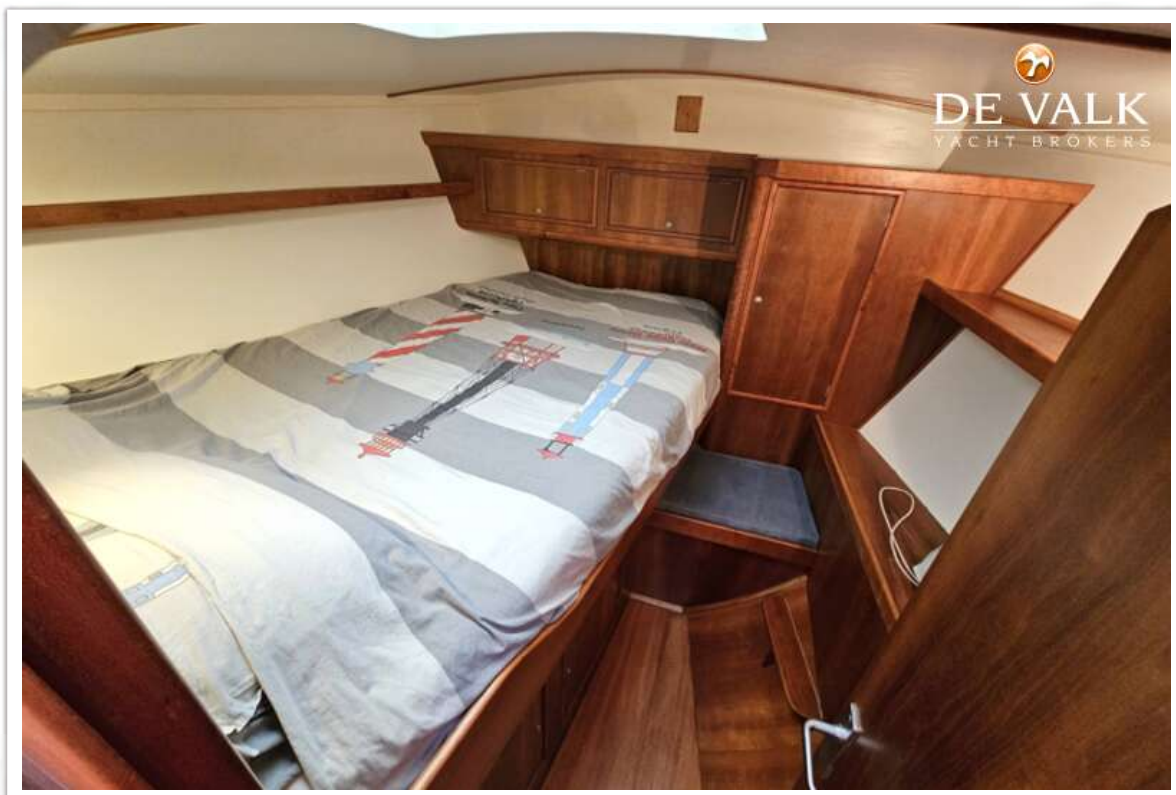
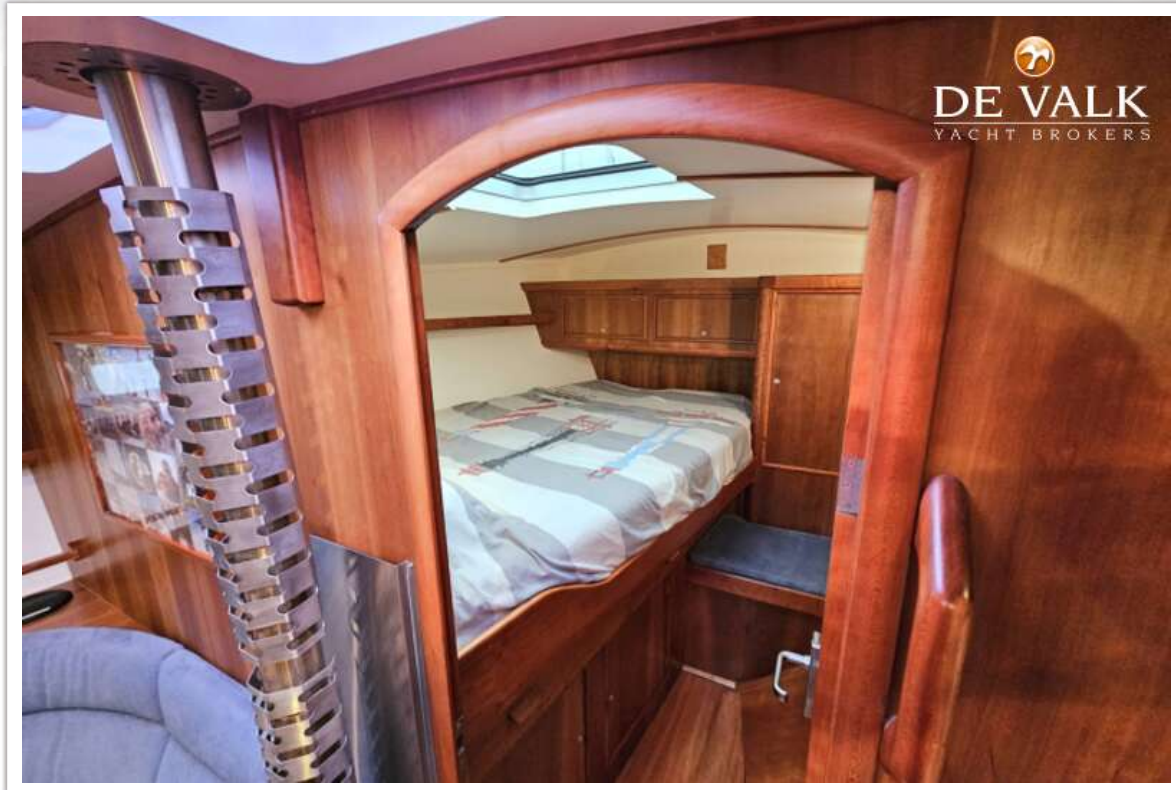


KOOPMANS 43



KOOPMANS 43







KOOPMANS 43

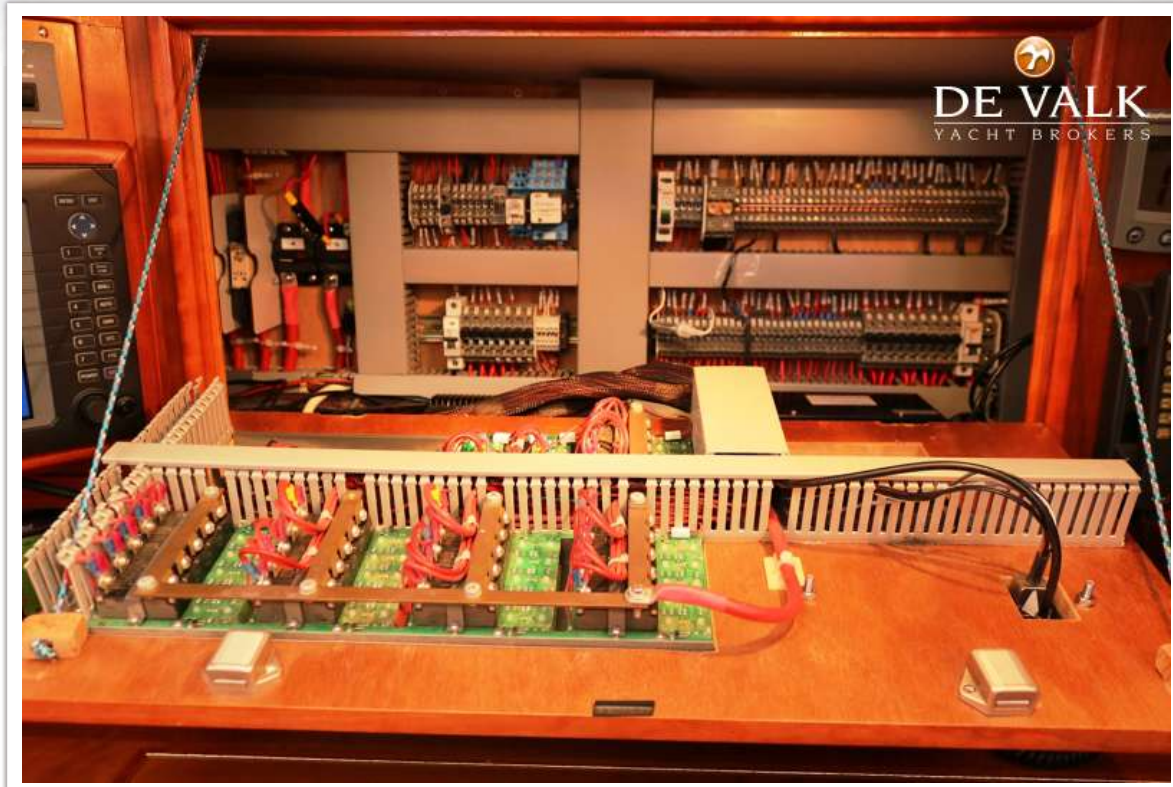




KOOPMANS 43



KOOPMANS 43





KOOPMANS 43

