



X-YACHTS X-35 ONE-DESIGN SPECIAL



DE VALK
YACHT BROKERS

X-YACHTS X-35 ONE-DESIGN SPECIAL

BROKER'S COMMENTS

"ESTELLO, X-Yacht's X-35 One-Design Special is a fresh water boat, customized and equipped for fast, shorthanded inland and off-shore cruising. She's a dream to sail, a joy to helm with fingertip steering, allowing fast passages to distant ports. Maintained to the highest level with many upgrades since the boat was purchased by the current owners in 2013. Just check all the specifications, details, and additional photos and you'll notice that this is a rare opportunity to become the new owner of a uniquely customized X-35. ESTELLO is truly ready to sail away!

Harald Padberg

SPECIFICATIONS

Dimensions	10.95 x 3.27 x 2.15 (m)	Builder	X-Yachts
Built	2006	Cabins	3
Material	GRP	Berths	8
Engine(s)	1 x Yanmar 3YM20 diesel	Hp/Kw	20.00 (hp), 14.70 (kw)
Asking price	sold (VAT)	Lying	at sales office

CONTACT

Sales office	De Valk Monnickendam B.V.	Telephone	+31 (0)299 65 63 50
Address	Hoogedijk 6 1145 PM Katwoude NL	E-mail	monnickendam@devalk.nl

DISCLAIMER

These particulars are given in good faith as supplied but cannot be guaranteed.



X-YACHTS X-35 ONE-DESIGN SPECIAL

GENERAL

Model	X-YACHTS X-35 ONE-DESIGN SPECIAL
Type	sailing yacht
LOA (m)	10,95
LWL (m)	9,12
Beam (m)	3,27
Draft (m)	2,15
Air draft (m)	18,75
Headroom (m)	1,77
Year built	2006
Builder	X-Yachts
Country	Denmark
Designer	Niels Jeppesen
Displacement (t)	4,5
Ballast (tonnes)	Lead/Ioden/ Blei bulb 1,7 t + 0,2t. lead/lood/Blei in bilge
CE norm	A
Hull material	GRP
Hull colour	white
Hull shape	round-bilged
Keel type	bulb keel
Superstructure material	GRP
Rubbing strake	stainless steel
Deck material	GRP
Deck finish	non-skid moulded in
Superstructure deck finish	non-skid moulded in
Cockpit deck finish	non-skid moulded in
Antifouling (year)	2022 - Coppercoat
Window frame	aluminium
Window material	perspex
Deckhatch	3 x
Fuel tank (litre)	stainless steel 60 L.



Level indicator (fuel tank)	yes
Freshwater tank (litre)	polyethylene 110 L.
Wheel steering	cable steering
Emergency tiller	yes
More info on hull	Short fixed, white-sprayed, stainless steel bowsprit with fixed stainless steel "water stay" and tackline fairlead; LOA is now 10,95. Osmosis treatment - peeling and hotvac - is done in 2019/2020. After treatment, hull is rebuilt with extra layer of glass fiber, full epoxy. Professionally applied outer layer epoxy with Coppercoat with some rework in 2022. - 10 years no antifouling required.
More info on paintwork	Yearly full polyester maintenance by DULON.
Extra info	Deeper rudder blade; custom developed and manufactured in 2012 by Bosgraaf/JEFA. Including new JEFA self-aligning bearings for distinctly more, better and longer control. Rudder bearings are checked in 2021.
Extra info	All stanchions remounted in 2017. Now a much more stronger construction.
Extra info	Original displacement is 4,3 t and original ballast is 1,7 t. There is an additional 200 kg lead ballast below the mast under the floor which can be taken out. This greatly improves motions without any loss of speed or sensitivity.

ACCOMMODATION

Cabins	3
Berths	8
Interior	mahogany
Floor	teak and holly
Open cockpit	yes
Headroom saloon (m)	1,77 M.
Heating	Webasto diesel
Navigation center	yes
Chart table	yes
Dinette	yes



X-YACHTS X-35 ONE-DESIGN SPECIAL

Galley	yes
Countertop	yes
Sink	stainless steel
Cooker	calor gas
Oven	yes
Fridge	Top loader
Hot water system	220V + engine Calorfier/boiler 20L.
Water pressure system	electrical
Owners cabin	double bed
Bed length (m)	2,05
Bathroom	separate
Toilet	In the bathroom / in de badkamer / im Badezimmer
Toilet system	New / nieuw / Neu 2022
Wash basin	in the bathroom Hot/Cold - Warm/Koud / Warm/Kalt water
Guest cabin 1	double bed
Bed length (m)	2,00 M.
Guest cabin 2	double bed
Bed length (m)	2,00 M.
Extra info	PS & SB convertible bed in saloon - 1,95 M
Extra info	Gas hoses renewed in 2020 - certificate valid up to 3/2023
Extra info	Cushions, upholstery and backrests in the saloon are renewed and upgraded by Neptune in 2020.
Extra info	Water pressure pump is upgraded to larger capacity in 2019.
Extra info	All interior light LED (at Saloon table defect)

MACHINERY

No of engines	1
Make	Yanmar
Type	3YM20
HP	20
kW	14.70



X-YACHTS X-35 ONE-DESIGN SPECIAL

Fuel	diesel
Year installed	2006
Maximum speed (kn)	6
Cruising speed (kn)	6
Consumption (l/hr)	2
Engine hours	1.064
Engine cooling system	freshwater heat exchanger
Drive	sail-drive
Saildrive seal	new in 2018
Gearbox	mechanical
Propeller type	Flexofold
Propeller blades	2
Manual bilge pump	yes
Electric bilge pump	yes
Electrical installation	12V/220V
Start battery	Optima Red Top 50Ah (2017, excellent condition)
Service battery	Exide Gel ES1600 140 Ah (2019, in excellent condition)
Battery monitor	Victron BMV-702 (monitoring starter and service battery)
Battery charger	Mastervolt ChargeMaster 12/25-3 (2018)
Inverter	Victron new in 2018; good for low Amp/Voltage appliances such as laptop/harddryer.
Shorepower	with cable
Extra info	Engine and all technical installations professionally maintained (Jachtservice Enkhuizen). Major service engine and saildrive in 2022 (including belts)
Extra info	New engine control lever in 2015.

NAVIGATION

Compass	Plastimo 135 lighted compass in custom washboards exchangeable with non-compass board
Multi control display	4 x ST290 graphic in bracket at the mast. 1 x ST290 graphic in the cockpit. 1 x ST290 at nav station and 2 x P70s at the helm.



X-YACHTS X-35 ONE-DESIGN SPECIAL

Depth sounder/log	yes
Windset	Raymarine (2019)
VHF	Icom M423G VHF class D - DSC w/ integrated GPS dual station (at chart table and in cockpit) -from 2016 and a stainless steel antenna and cable (low resistance) - new in 2019. VHF ICOM Commandmic second station in cockpit - 2016 + custom stainless steel protection of Commandmic connector.
VHF handheld	Icom M33 with docking station + Raymarine Ray 101 class D DSC with fixed charging station at nav station.
Autopilot	JEFA direct drive type 1 (pancake drive) low power consumption and frictionless when not in use. Raymarine EVO EV-100S electronics (2020) and 2 x Raymarine EVO 70 display/control stations at the wheel PS/SB (2020). Raymarine S100 wireless remote control on lanyard (2017).
Plotter/GPS	Raymarine A75 chart plotter (2014) in cockpit bulkhead with integrated GPS antenna. Raymarine C70 Chart plotter at Nav. station with Raystar 125 antenna. Raymarine Bluetooth RCU-3remote control chart plotter (2021) mounted at steering wheel.
Electronic chart(s)	for Raymarine A75 - Navionics 28XG: FR / UK / BE & NL updated April 2022.
AIS transceiver	Vesper Marine WatchMate 850 class B AIS monitor at nav station, oblique mounted to face cockpit (2015). AIS loud external alarm in cockpit; switchable on/off. Vesper Marine SP160 powered active splitter AIS/VHF/radio.
EPIRB	Oceansignal - 2021
Personal MOB transmitter	Raymarine Lifetags, wireless MOB warning system, loud alarm, interfaced to A75 plotter for automatic MOB position indication (2 units)
Navigation lights	all LED. Upgraded PS/SB and stern navigation lights (2015), steam light and Tri-color/anchor light.
EQUIPMENT	
Sprayhood	UK-Sails
Boarding ladder	stainless steel
Deck shower	with hot and cold water mixer tap



X-YACHTS X-35 ONE-DESIGN SPECIAL

Anchor	Delta 12 Kg
Anchor chain	yes
Sea railing	wire
Pushpit	yes
Pulpit	yes
Life raft	valise (or bag) Liferaft Seago G6 Off Shore
Life raft (pers)	6
Last life raft survey	06/2021 - valid through 06/2024
Radar reflector	Tri-lens passive on 2nd spreader
Fenders	yes
Mooring lines	yes
Radio	Fusion MS-RA50
Cockpit speakers	1 x for VHF
Speakers in salon	2 X Kenwood
Fire extinguisher	yes
Extra info	MICA ML-600 compact rechargeable handlamp in fixed charging station at nav station.

RIGGING

Rigging	fractional
Standing rigging	= Rod rigging - 2018 - Tuned Rigs & Ropes
Brand mast	Nordic
Material mast	aluminium
Spreaders	2 sets
Keel stepped mast	yes
Mainsail cover	North Sails with boat name "Estello"
Battcars	Ronstan + stainless steel custom entry/exit point for battcars
Fully battened mainsail	Quantum Fusion MC6500, 38,43m ² , Carbon/Technora 14000 Dpi, fully battened with 5 Ronstan battens. In excellent condition (year - 2017)
Jib	Hagoort Sails ORC/working Jib, Off-shore performance, Dacron 18m ² , - hardly used. In excellent condition - year 2013



X-YACHTS X-35 ONE-DESIGN SPECIAL

High aspect	Hagoort Sails Off-Shore performance Maxx Aramide internal taffeta laminate, reinforced cross-cut, roll-battens. In very good condition - year 2012
Genoa	North Sails 3Di Endurance 760/14700Dpi, 105%/31,9m2 with 3 vertical battens. In excellent condition. Year - 2021
Genoa furler	Harken
Gennaker	North Sails - Dark Blue + sock. In good condition.
Spinnaker	Hagoort Sails Off-Shore performance 0,9oz Nylite nylon, 105m2 full radial cut. Light Blue, Hardly used - in good condition - year 2012
Stormjib	Hagoort Sails Off-Shore performance, 10m2., Cross-Cut, Orange - never used. In excellent condition - year 2013.
Reefing System	slabreefing
Backstay adjuster	X-Yachts Magic Wheel
Boomvang	gasspring
Primary sheet winch	2 x Harken 48 - 2-speed
Halyard winches	2 x self-tailing Harken 40 - Quattro
Multifunctional winches	German mainsheet winches 2 x self-tailing Harken 40 - 2-speed
Spi-pole	carbon Rocon
Extra info	Traveler optimized for operation by helmsman. The boom is slightly shortened, not extending past the steering wheel. Lazy Jacks - new in 2022. Jackstays, webbing. Preventer line for cockpit operation. Slightly reduced main sail area. Is now 38,43 m2 (Original area OD = 40,1m2). Reefing system = hook and slabreefing, optimized for short handed sailing. Higher placed exit of spinnaker halyard. 2 x foldable maststeps. 2x extra cleats at mast.
Extra info	Rocon for the furler. Mast bracket with 4 displays has a custom cover made by UK Sails. Main sail, Genoa, Gennaker & High Aspect yearly maintained by North Sails. Also included a spare set of sails (condition poor): North Marathon 3DL 105% Genoa and 3DL X34 High Aspect. Masttrim, halyards, sheets, trim lines dyneema, where necessary.



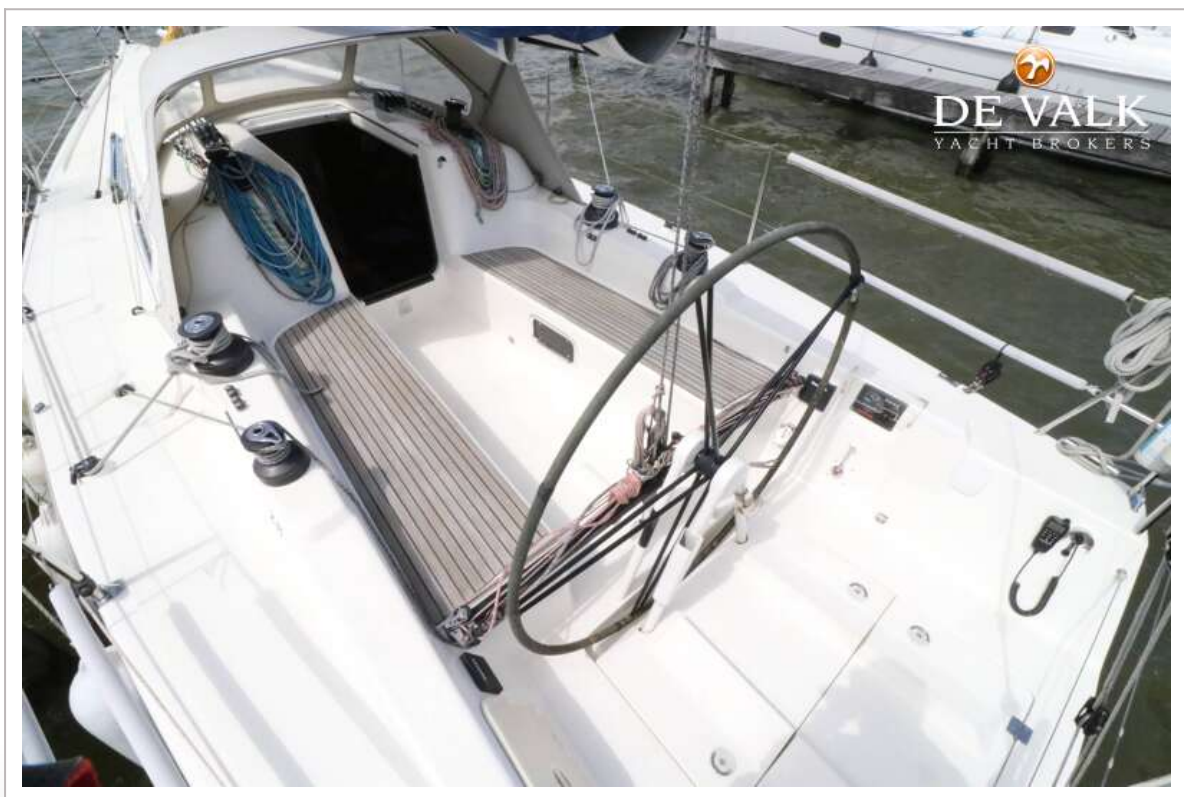
X-YACHTS X-35 ONE-DESIGN SPECIAL



X-YACHTS X-35 ONE-DESIGN SPECIAL



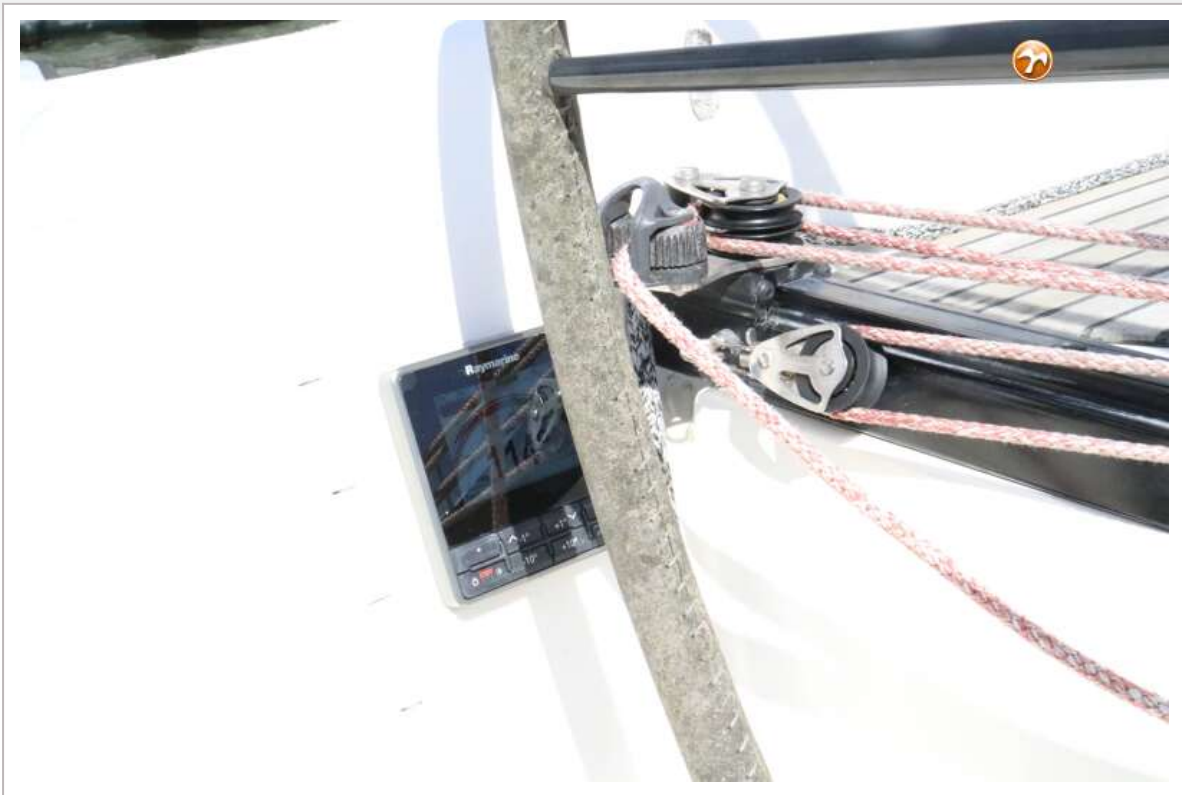
X-YACHTS X-35 ONE-DESIGN SPECIAL



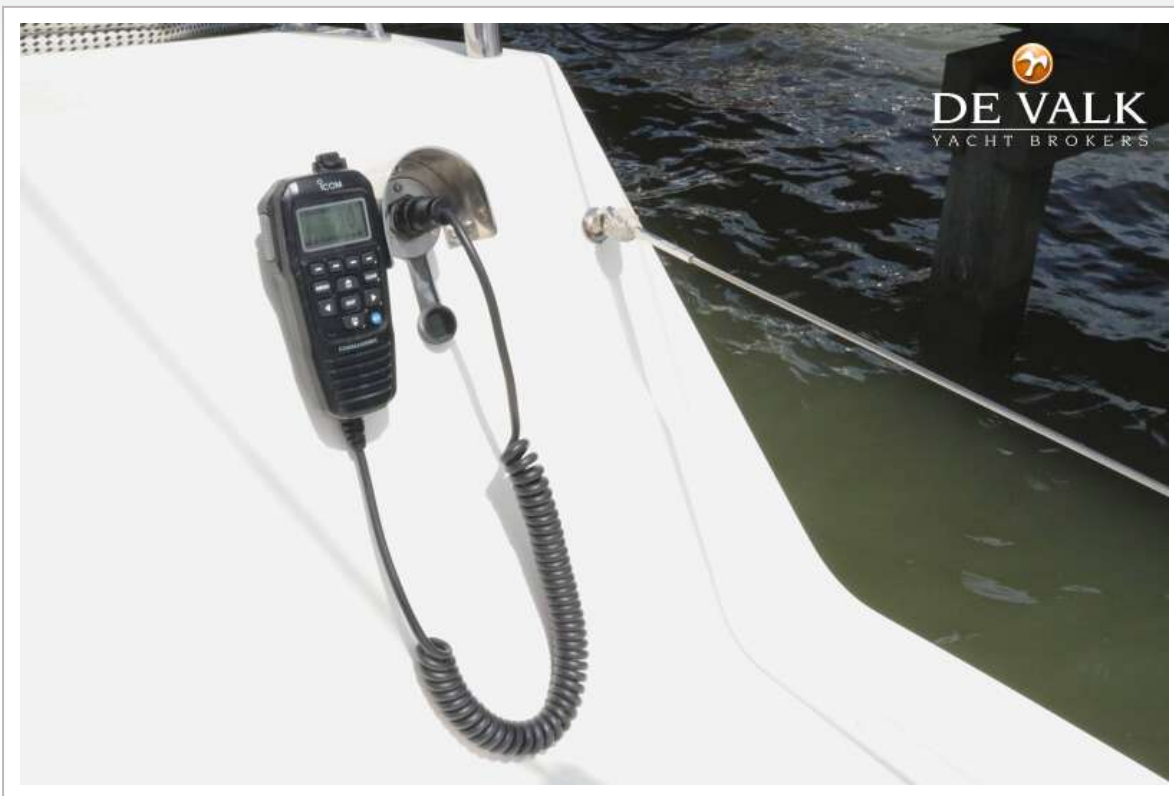
X-YACHTS X-35 ONE-DESIGN SPECIAL



X-YACHTS X-35 ONE-DESIGN SPECIAL



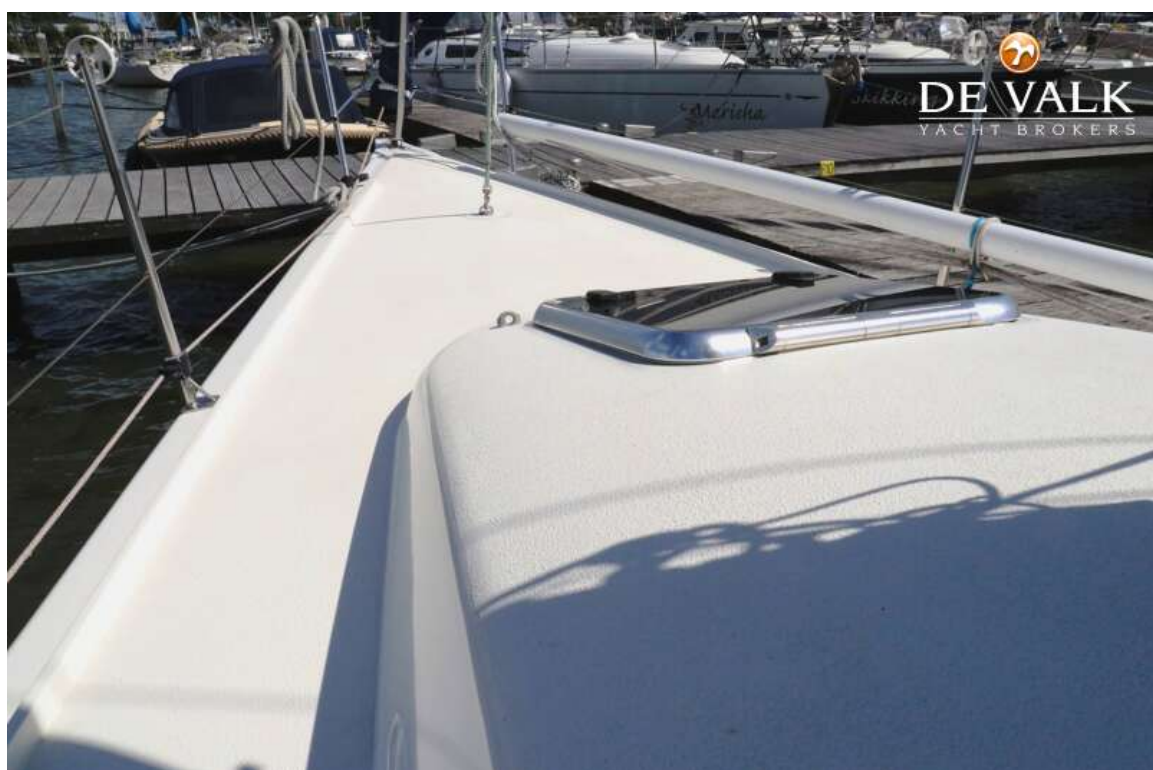
X-YACHTS X-35 ONE-DESIGN SPECIAL



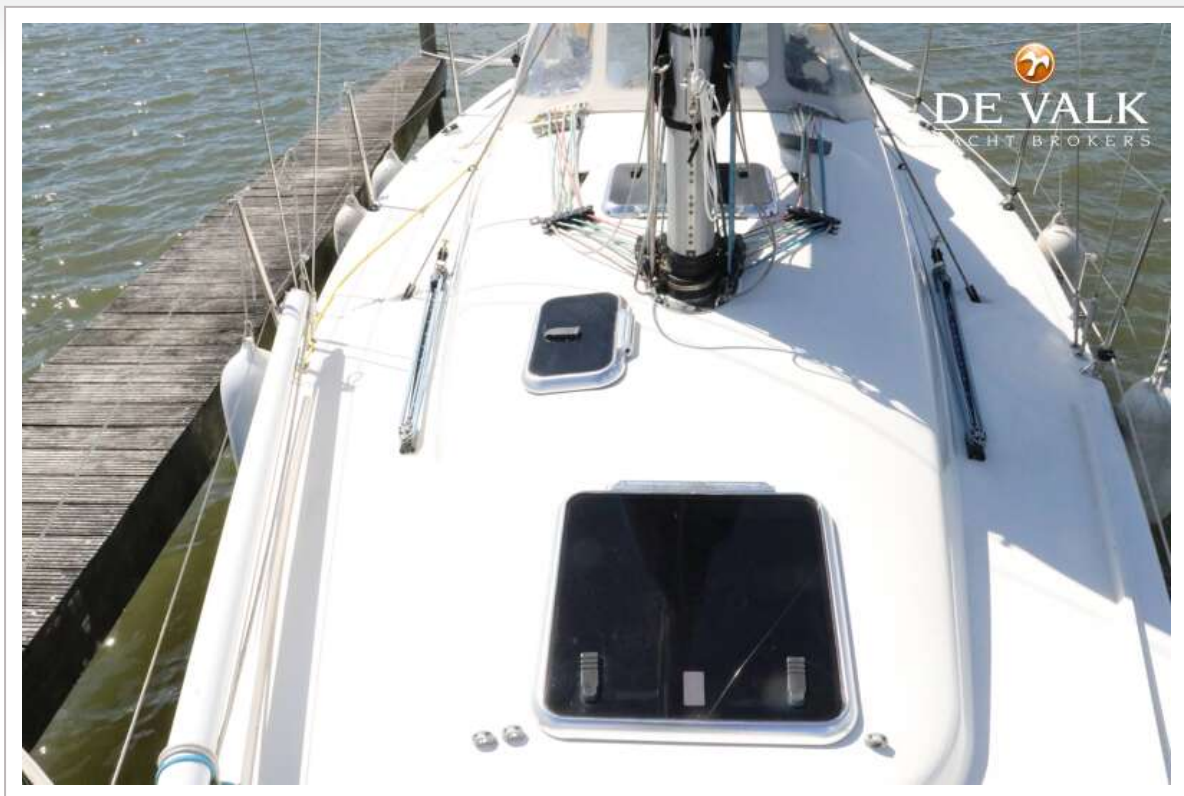
X-YACHTS X-35 ONE-DESIGN SPECIAL



X-YACHTS X-35 ONE-DESIGN SPECIAL



X-YACHTS X-35 ONE-DESIGN SPECIAL



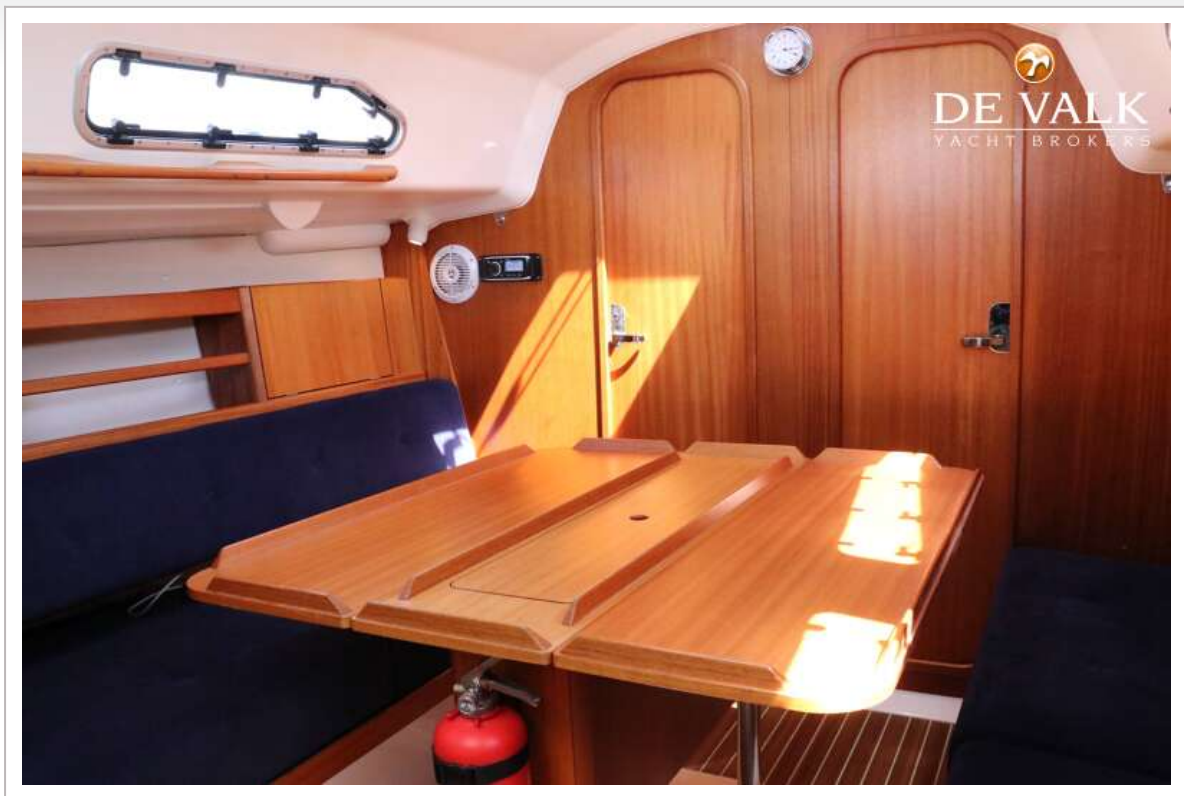
X-YACHTS X-35 ONE-DESIGN SPECIAL



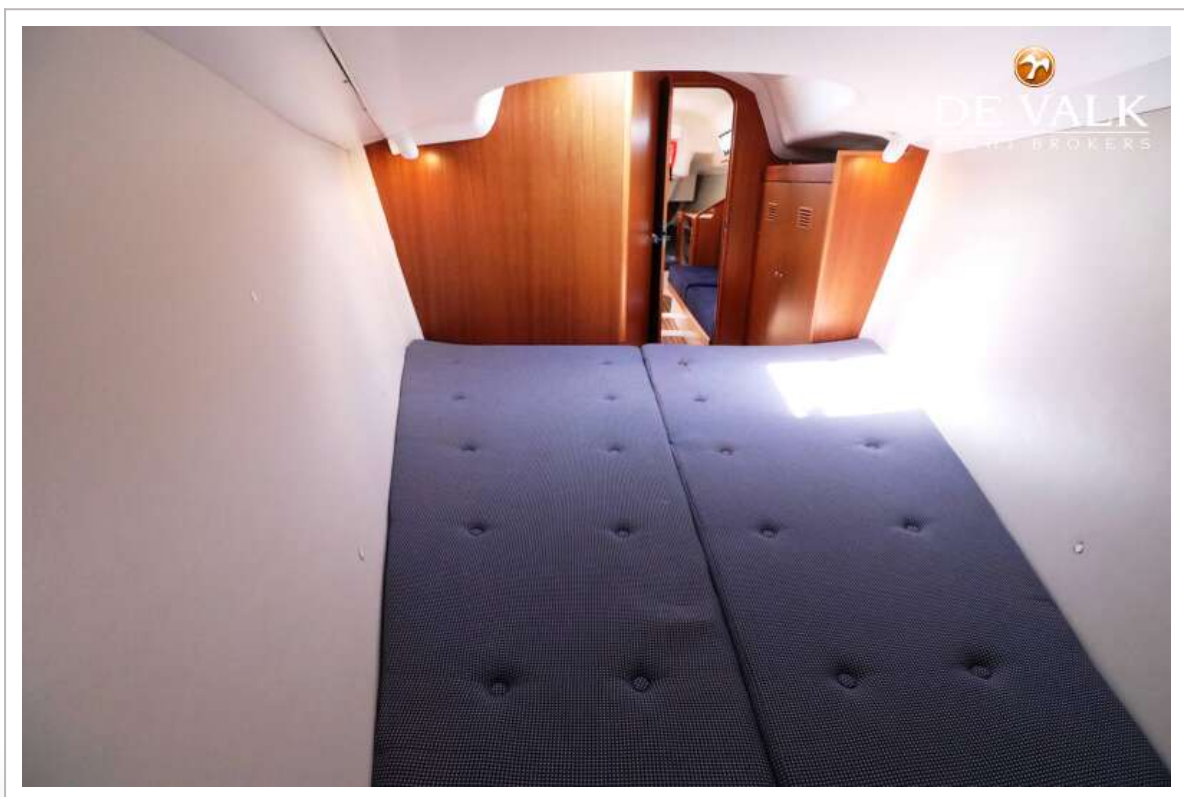
X-YACHTS X-35 ONE-DESIGN SPECIAL



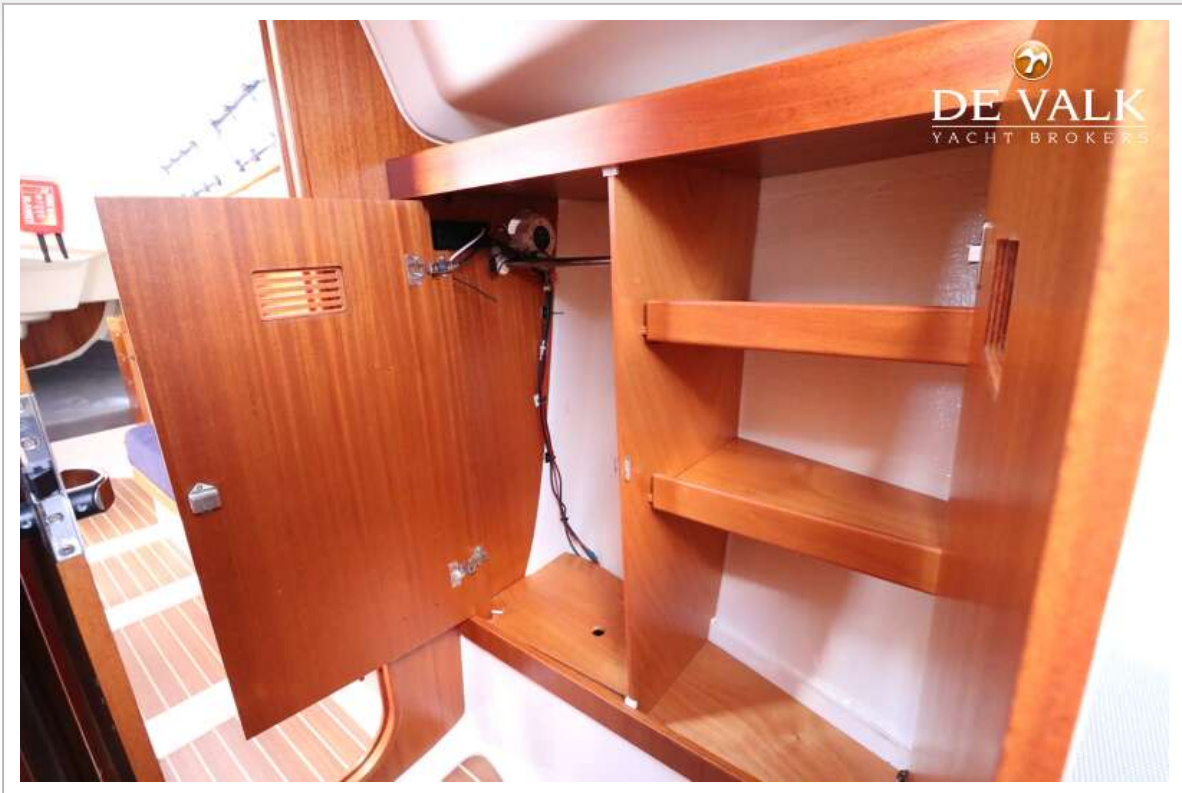
X-YACHTS X-35 ONE-DESIGN SPECIAL



X-YACHTS X-35 ONE-DESIGN SPECIAL



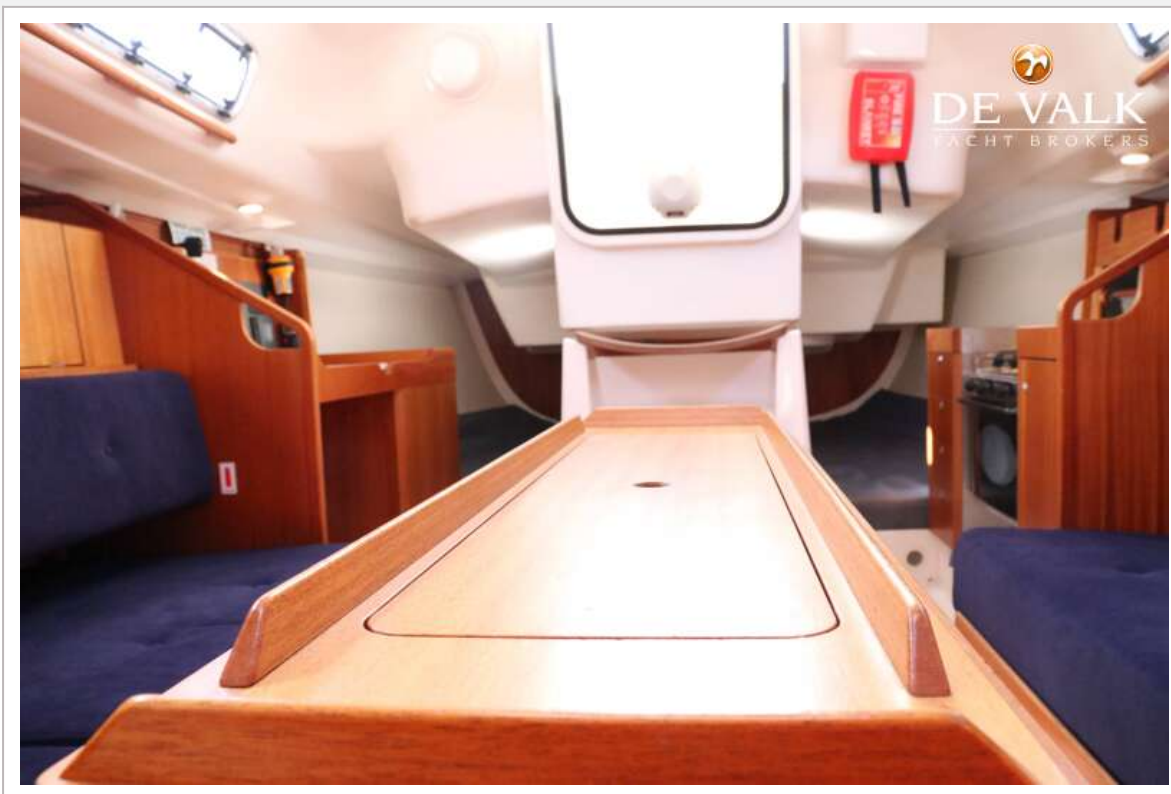
X-YACHTS X-35 ONE-DESIGN SPECIAL



X-YACHTS X-35 ONE-DESIGN SPECIAL



X-YACHTS X-35 ONE-DESIGN SPECIAL



X-YACHTS X-35 ONE-DESIGN SPECIAL



X-YACHTS X-35 ONE-DESIGN SPECIAL



X-YACHTS X-35 ONE-DESIGN SPECIAL



X-YACHTS X-35 ONE-DESIGN SPECIAL



X-YACHTS X-35 ONE-DESIGN SPECIAL



