



DE VALK
YACHT BROKERS



MALO 106



DE VALK
YACHT BROKERS

BROKER'S COMMENTS

The Malö 106 is first and foremost a boat for sailors. From the strong, powerful rig, to the carefully designed keel and rudder, her pedigree is that of a true offshore yacht. Particular effort has been made to achieve a yacht which is well balanced and predictable on all points of sail. Easy to handle, both under sail and power. Please call for more details or to arrange a viewing. She can be seen in our sales marina in Katwoude.

Reinier van der Wolf

SPECIFICATIONS

Dimensions	10.60 x 3.35 x 1.58 (m)	Builder	Maló Yachts
Built	1987	Cabins	2
Material	GRP	Berths	5
Engine(s)	1 x Volvo Penta MD 2003T diesel	Hp/Kw	43.00 (hp), 31.61 (kw)
Asking price	sold (VAT)	Lying	at sales office

CONTACT

Sales office	De Valk Monnickendam B.V.	Telephone	+31 (0)299 65 63 50
Address	Hoogedijk 6 1145 PM Katwoude NL	E-mail	monnickendam@devalk.nl

DISCLAIMER

These particulars are given in good faith as supplied but cannot be guaranteed.



GENERAL

Model	MALO 106
Type	sailing yacht
LOA (m)	10,60
LWL (m)	8,60
Beam (m)	3,35
Draft (m)	1,58
Headroom (m)	1,88
Year built	1987
Builder	Maló Yachts
Country	Sweden
Designer	Olsöners Båtbyggen
Displacement (t)	6,1
Ballast (tonnes)	cast iron and lead 2,5
CE norm	NA
Hull material	GRP
Hull colour	white
Hull shape	round-bilged
Keel type	fin keel
Superstructure material	GRP
Rubbing strake	plastic
Deck material	GRP
Deck finish	teak
Superstructure deck finish	teak
Cockpit deck finish	teak
Antifouling (year)	2020
Window frame	aluminium
Window material	polycarbonate
Deckhatch	4x Nemo
Fuel tank (litre)	stainless steel Ca. 200
Level indicator (fuel tank)	VDO



Freshwater tank (litre)	stainless steel Ca. 200
Level indicator (freshwater)	VDO
Blackwater tank (litre)	stainless steel
Wheel steering	cable steering

ACCOMMODATION

Cabins	2
Berths	5
Interior	mahogany
Floor	teak and holly
Open cockpit	yes
Saloon	yes
Headroom saloon (m)	1,88
Heating	diesel ducted hot air Webasto
Chart table	yes
Aft Cabin	yes
Dinette	yes
Galley	yes
Countertop	wood
Sink	stainless steel 2x
Cooker	calor gas Optimus
Fridge	toploader
Hot water system	220V + engine
Water pressure system	electrical
Owners cabin	v-bed
Wardrobe	hanging
Bathroom	shared
Toilet	shared
Toilet system	manual
Wash basin	in the bathroom
Shower	shared



Guest cabin 1	single bed
---------------	------------

MACHINERY

No of engines	1
Make	Volvo Penta
Type	MD 2003T
HP	43
kW	31,61
Fuel	diesel
Year installed	1987
Maximum speed (kn)	7
Cruising speed (kn)	6
Engine hours	2100
Engine cooling system	freshwater heat exchanger
Drive	shaft
Shaft seal	yes
Engine controls	mechanical
Gearbox	mechanical
Bowthruster	electric
Exhaust	watercooled
Propeller type	reversible
Propeller blades	3
Propeller shaft material	stainless steel
Shaft lubrication	grease
Manual bilge pump	yes
Electric bilge pump	yes
Batteries	yes
Start battery	70 Ah
Service battery	2x 120 Ah - 2016
Battery monitor	yes
Battery charger	yes



NAVIGATION

Compass	Suunto
Depth sounder	VDO
Log	VDO
Windset	VDO
VHF	Simrad RD68
Autopilot	Raytheon
Navigation lights	yes

EQUIPMENT

Fixed windscreen	yes
Sprayhood	yes
Cockpit cover	yes
Cockpit table	yes
Boarding ladder	stainless steel
Anchor	Bruce
Anchor 2	Danforth
Anchor chain	30 m.
Windlass	electrical
Sea railing	stainless steel
Grab rail (superstructure)	teak
Pushpit	yes
Pulpit	yes
Safety lines on deck	yes
Radar reflector	yes
Fenders	yes
Mooring lines	yes
Spare parts	yes

RIGGING

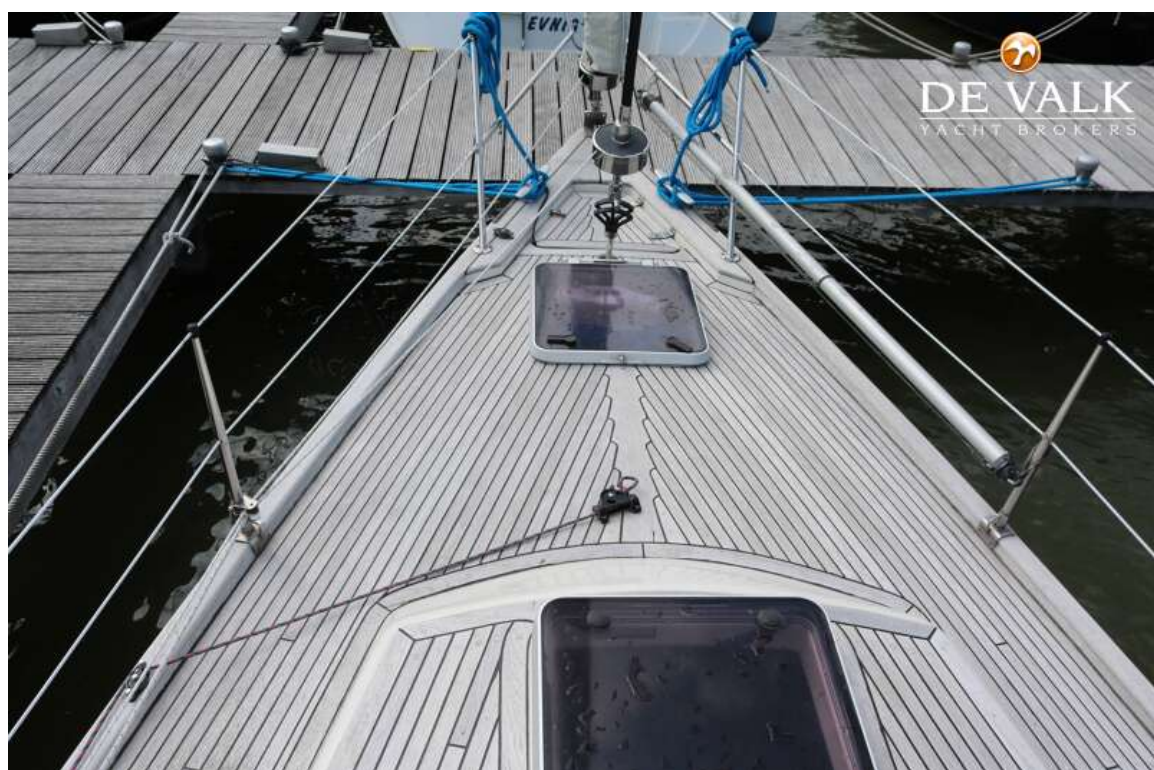


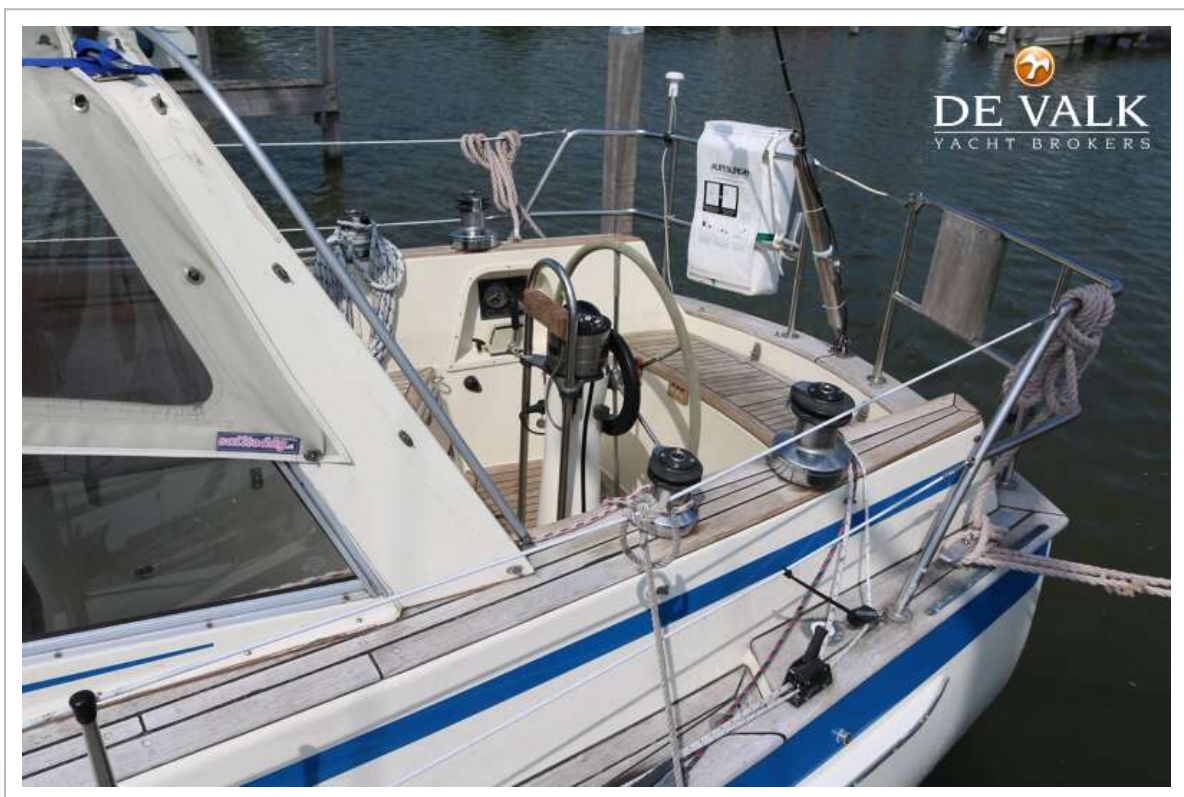
Rigging	sloop-cutter
Standing rigging	wire
Brand mast	Francespar
Material mast	aluminium
Spreaders	Double
Mainsail cover	yes
Fully battened mainsail	renewed 2006
Cutterstay	yes
Jib	renewed 2009
Genoa	renewed 2006
Genoa cover	yes
Gennaker	age unknown but hardly used
Booster	yes
Removable innerforestay	yes
Reefing System	slabreefing
Backstay adjuster	mechanical
Boomvang	tackle
Primary sheet winch	2x 43ST Lewmar
Secondary sheet winch	2x 16ST Lewmar
Halyard winches	on mast 2x
Reefing winch	1x 15ST Lewmar
Jockey-pole	aluminium
Isolated backstay	yes

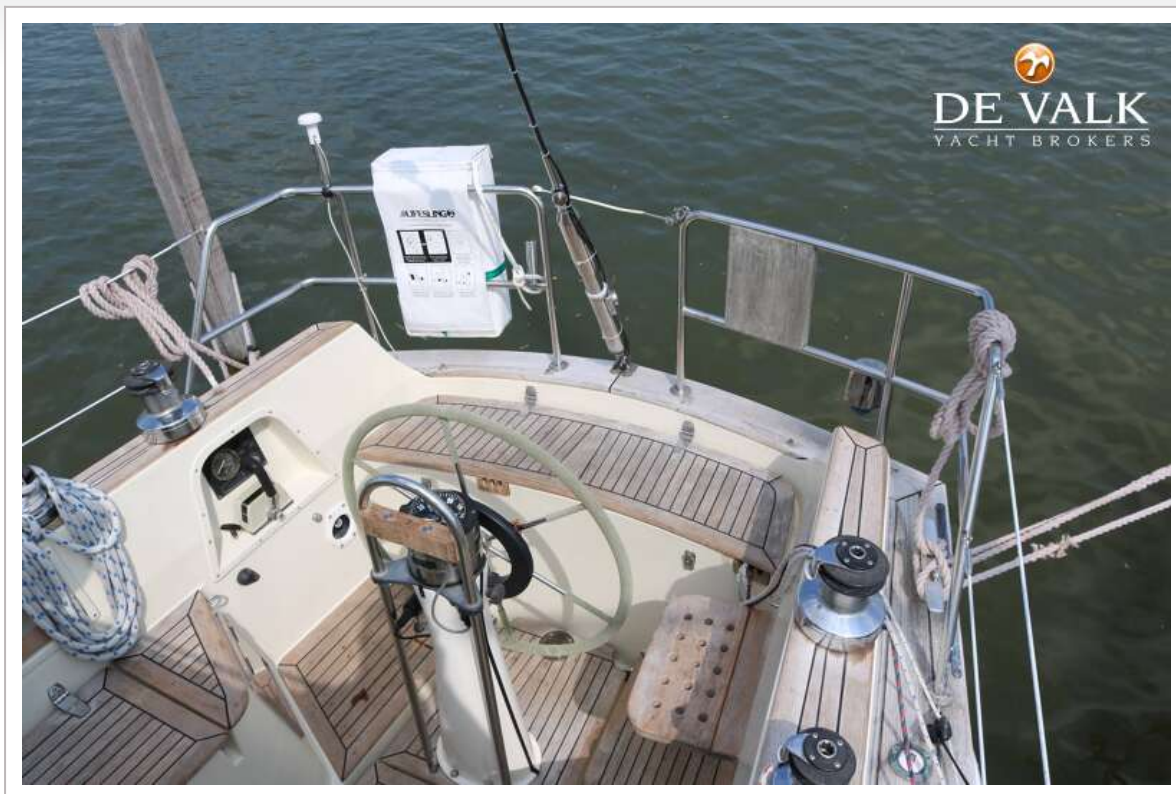










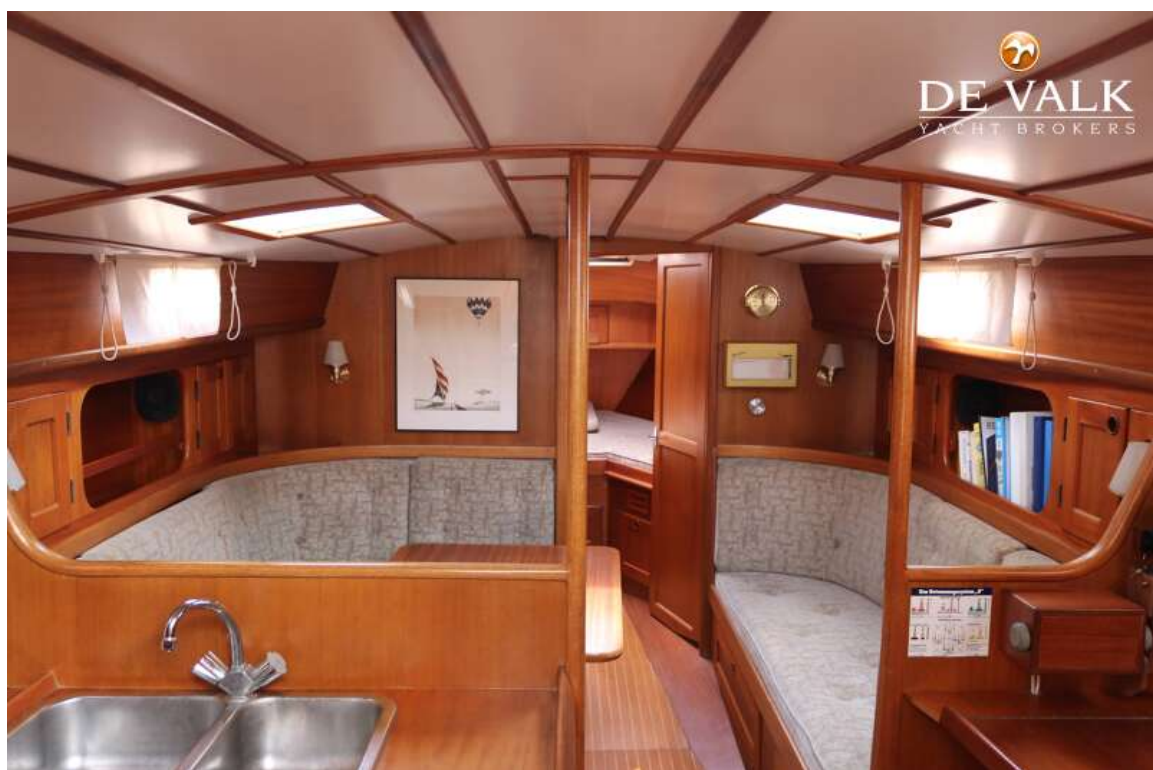


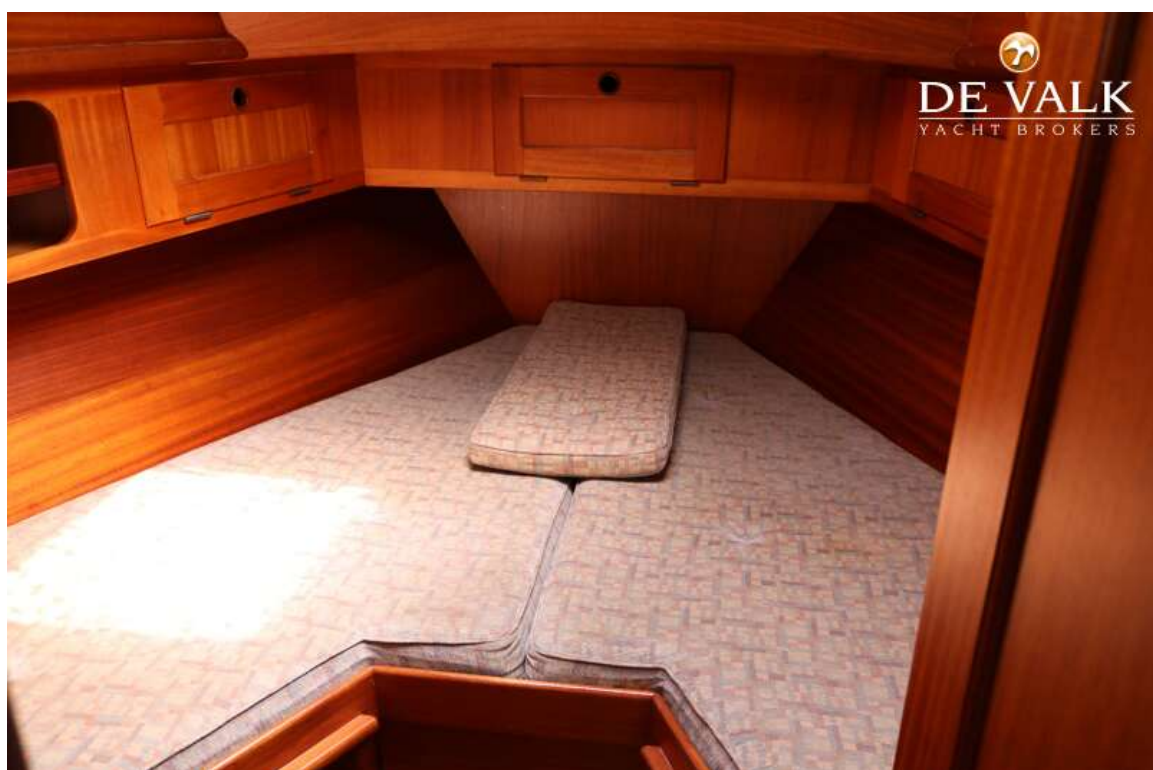


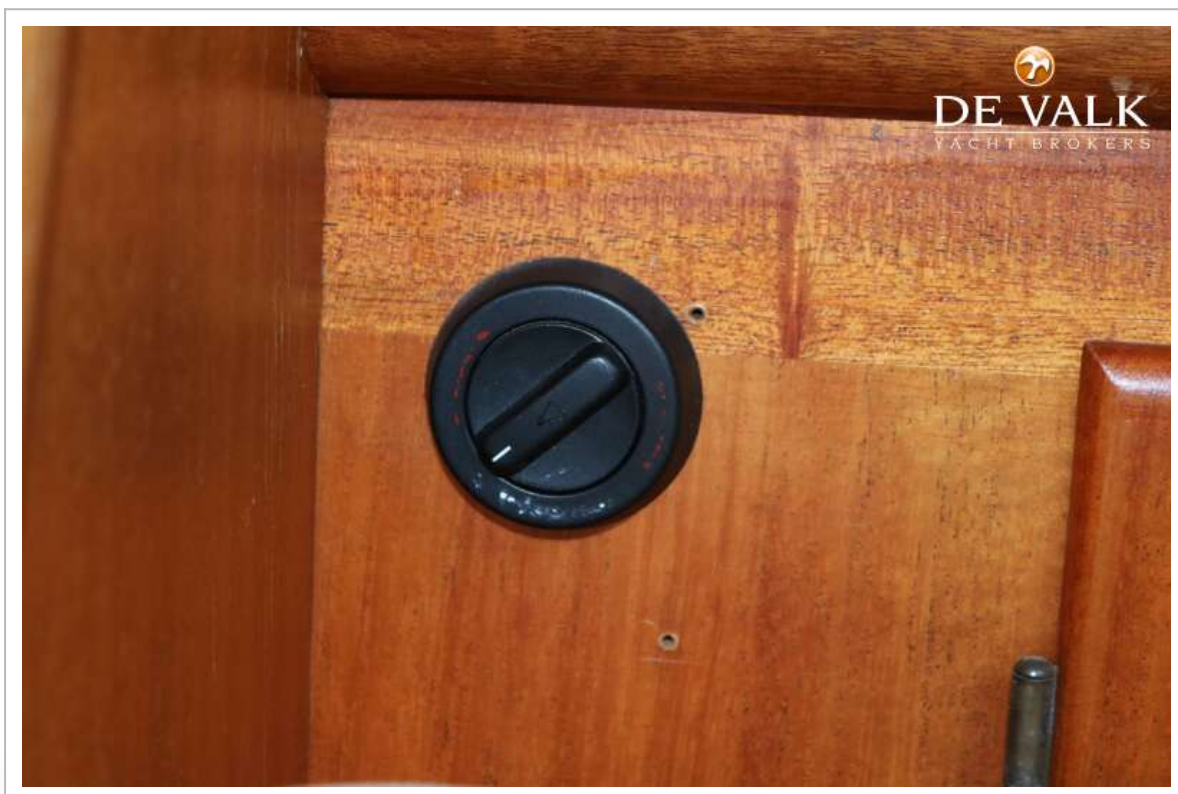














MALO 106



