



## HALLBERG RASSY 36

# HALLBERG RASSY 36

## BROKER'S COMMENTS

After 10-months sabbatical and crossing the Atlantic, Ithaka's owners are ready to sell their beloved Hallberg Rassy 36. They praise their yacht for it's excellent sailing capacities, safeness easy maneuverability. Below decks ample living space and the accommodations are spacious and light. Over the years there has been invested a lot. The biggest updates are a new teak deck and mainsail in 2016 and a Genoa II in 2018.. Will you be the proud new owner ? Come over to visit this Hallberg 36 in our marina. We are open 7 days a week for your convenience!

*Harald Padberg*

## SPECIFICATIONS

<b>Dimensions</b>	10.87 x 3.55 x 1.70 (m)	<b>Builder</b>	Hallberg Rassy Varv, Ellios
<b>Built</b>	1991	<b>Cabins</b>	2
<b>Material</b>	GRP	<b>Berths</b>	7
<b>Engine(s)</b>	1 x Volvo Penta MD 22A diesel	<b>Hp/Kw</b>	57.00 (hp), 41.90 (kw)
<b>Asking price</b>	sold (VAT )	<b>Lying</b>	at sales office

## CONTACT

<b>Sales office</b>	De Valk Monnickendam B.V.	<b>Telephone</b>	+31 (0)299 65 63 50
<b>Address</b>	Hoogedijk 6 1145 PM Katwoude NL	<b>E-mail</b>	monnickendam@devalk.nl

## DISCLAIMER

These particulars are given in good faith as supplied but cannot be guaranteed.



## GENERAL

Model	HALLBERG RASSY 36
Type	sailing yacht
LOA (m)	10,87
LWL (m)	8,72
Beam (m)	3,55
Draft (m)	1,70
Air draft (m)	15,50
Headroom (m)	1,91
Year built	1991
Launched	April 1992
Builder	Hallberg Rassy Varv, Ellios
Country	Sweden
Designer	German Frers
Displacement (t)	7,5
Ballast (tonnes)	lead 3,4
CE norm	NA
Hull material	GRP
Hull colour	white
Hull shape	round-bilged
Keel type	fin keel
Superstructure material	epoxy and foam core
Rubbing strake	stainless steel
Deck material	GRP
Deck finish	teak
Superstructure deck finish	non-skid moulded in
Cockpit deck finish	teak
Antifouling (year)	May 2020
Dorades	2 X
Window frame	aluminium
Window material	4 X



Deckhatch	yes
Insulation	airfoil
Fuel tank (litre)	345
Freshwater tank (litre)	355
Wheel steering	mechanical
Emergency tiller	yes
More info on hull	Old anti fouling has been sanded of, the hull is treated with a primer and finished with Epifanes Copper Cruise.
Extra info	Teak deck - 12 mm - renewed in 2016. New leather steering wheel cover 2010.

## ACCOMMODATION

Cabins	2
Berths	7
Interior	mahogany
Floor	teak and holly
Deck saloon	yes
Headroom saloon (m)	1,91 M
Heating	diesel ducted hot air
Sink	stainless steel Inox
Cooker	calor gas Eniro (2014)
Oven	Eniro (2014)
Fridge	Compressor (2010), Vaporiser and thermostat (2009)
Hot water system	220V + engine Boiler
Water pressure system	Electr. - (2011)
Manual and/or foot pump	foot pump
Owners cabin	twin single
Bed length (m)	2,00 M
Wardrobe	hanging
Guest cabin 1	v-bed
Bed length (m)	2,00 M
Wardrobe	hanging and drawers



Bathroom	shared
Toilet	shared Jabsco
Toilet system	manual
Wash basin	in the bathroom
Shower	shared
Extra info	Five seacocks renewed in 2018

## MACHINERY

No of engines	1
Make	Volvo Penta
Type	MD 22A
HP	57
kW	41,90
Fuel	diesel
Year installed	1991
Maximum speed (kn)	7
Cruising speed (kn)	6
Consumption (l/hr)	4
Drive	shaft
Shaft seal	new 2013
Engine controls	bowden cable
Gearbox	mechanical
Start battery	55 Ah, ( new in 2020 )
Service battery	2x Victron AGM 105 Ah. (2018)
Inverter	Victron Atlas Combi 40 A charger/converter and Xantrex 20A for 12,5V in the Caribbean
Battery charger/inverter	yes
Solar panel	2 X Solar MESM - 30W (2018)
Watermaker	Spectra (2001)
Extra info	Alternator 45 A and 60 A Cambelt for the engine (2011) Rudder bearings and seals replaced (2004)



## Extra info

Engine cooling system cleaned 2012, Cambelt replaced 2011,  
Rudder bearings and seals replaced 2004

## NAVIGATION

### Compass

Surunto D-135

### Log

Autohelm

### Windset

Raymarine (2008)

### VHF

Sailor C4900 (1997)

### Autopilot

Robertsson steering with autohelm computer (1999)

### Radar

Raymarine C80 (2008)

### GPS

2006

### Plotter

Chartplotter Raymarine C80, updated to 2019

### Navtex

Nasa-Marine (2005) - not used by current owner, operation  
unknown

### AIS receiver

AIS with separate GPS (2016)

### Radio receiver

SSB: Kenwood (2000)

### Navigation lights

LED (2016/2018)

### Extra info

Satellite telephone Iridium (2001)

## EQUIPMENT

### Fixed windscreen

yes

### Sprayhood

Hallberg Rassy (2018)

### Boarding ladder

stainless steel

### Anchor

CQR plow 25 kg

### Anchor chain

10 mm, 60 m (2004)

### Windlass

electrical Lofrans (2007)

### Life raft

Seago (24H+ Pack) and Solar Still watermaker (2018)

### Life raft (pers)

6

### Tools

All tools which are present are to maintain the yacht

## RIGGING



<b>Rigging</b>	sloop
<b>Standing rigging</b>	wire (2008)
<b>Brand mast</b>	Seldén
<b>Material mast</b>	aluminium
<b>Spreaders</b>	2 sets
<b>Mainsail</b>	in-mast furling (2016)
<b>Stoway mast</b>	yes
<b>Genoa I</b>	2012
<b>Genoa II</b>	2018
<b>Genoa furler</b>	2 X
<b>Gennaker</b>	85 m2
<b>Trysail</b>	yes
<b>Stormjib</b>	yes
<b>Boomvang</b>	gasspring 2008
<b>Secondary sheet winch</b>	2 X Lewmar 30 CST
<b>Genoa sheetwinches</b>	2 X Lewmar 46 CST
<b>Halyard winches</b>	2 X Lewmar 16 CST
<b>Reefing winch</b>	yes
<b>Spi-pole</b>	aluminium
<b>Extra info</b>	Main furling mechanism replaced (2008), spare mainsail present. Genoa furling lines, main sheet, downhaul, mainsail outhaul and gennaker halyard replaced in 2018.
<b>Extra info</b>	Mast steps. Aluminium turnbuckle covers



# HALLBERG RASSY 36





# HALLBERG RASSY 36



# HALLBERG RASSY 36



# HALLBERG RASSY 36

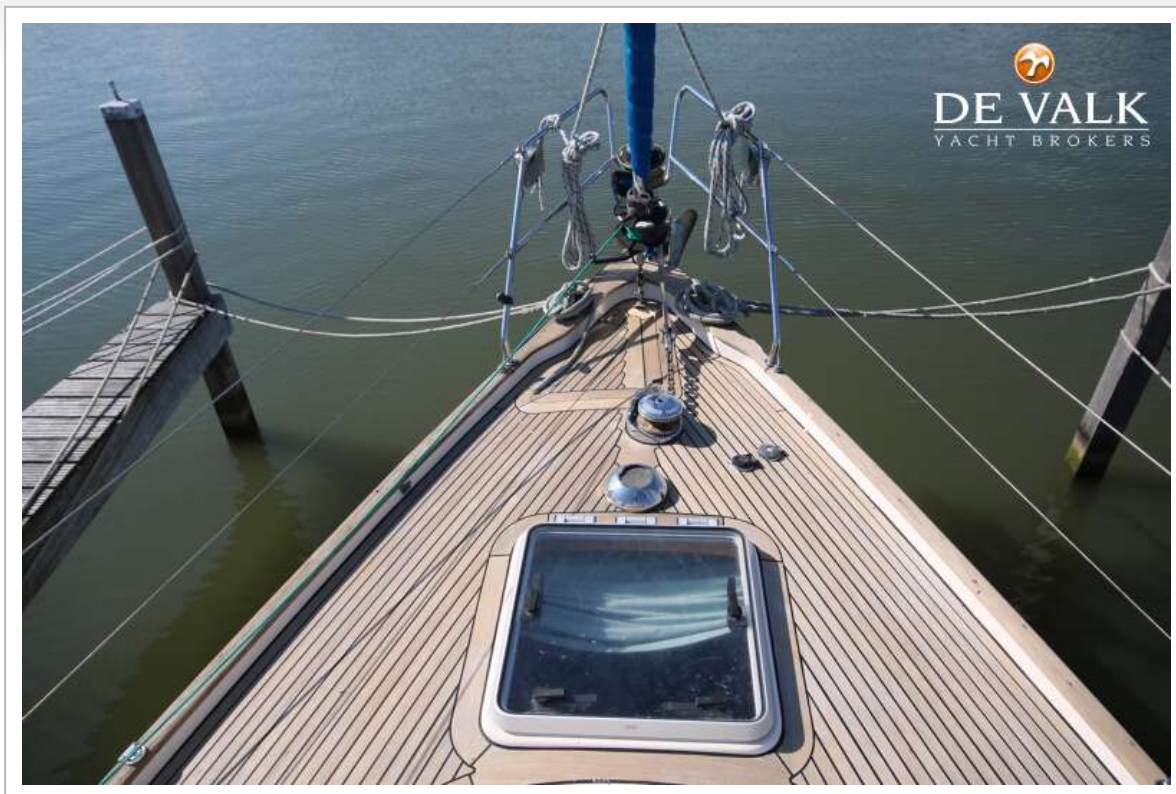




# HALLBERG RASSY 36

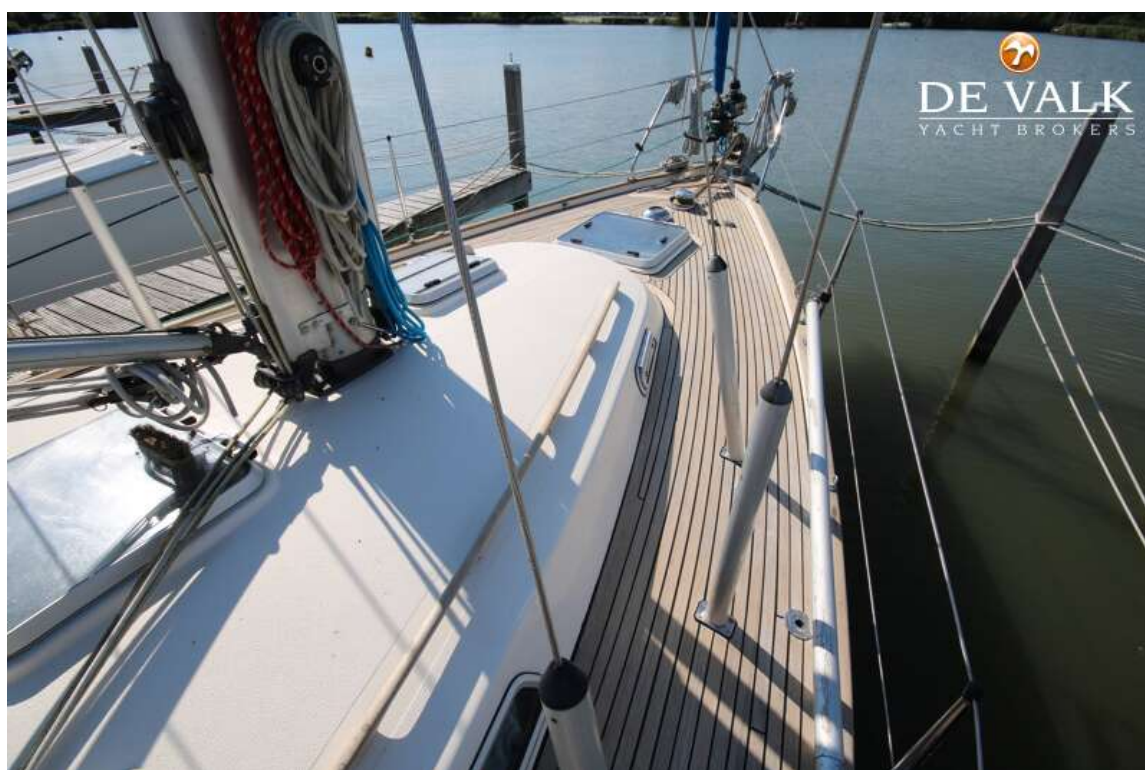


# HALLBERG RASSY 36

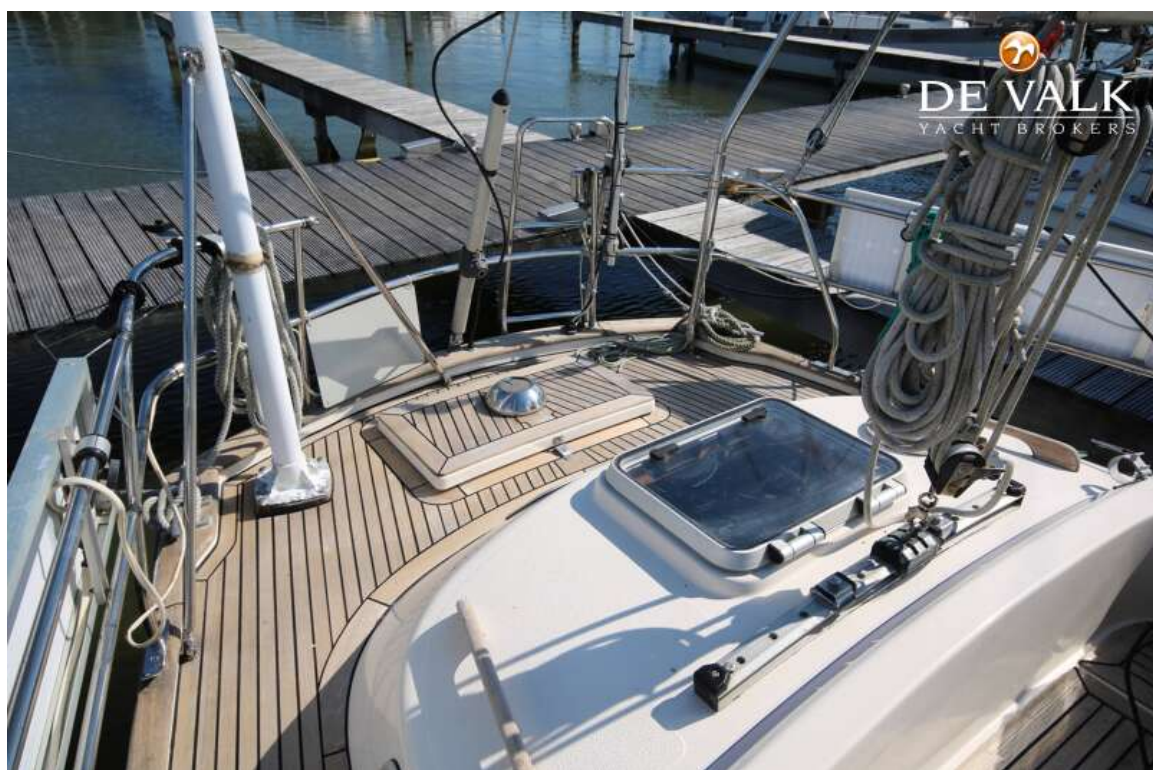




# HALLBERG RASSY 36



# HALLBERG RASSY 36





# HALLBERG RASSY 36





# HALLBERG RASSY 36



# HALLBERG RASSY 36

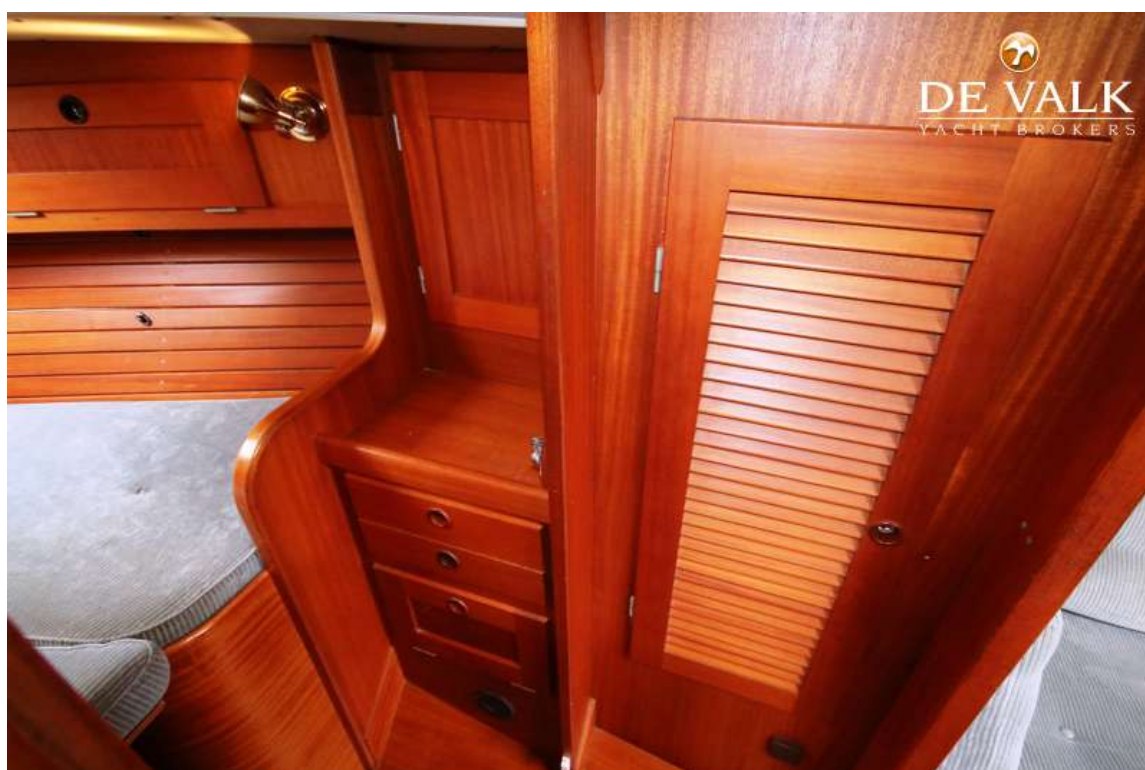




# HALLBERG RASSY 36



# HALLBERG RASSY 36





# HALLBERG RASSY 36

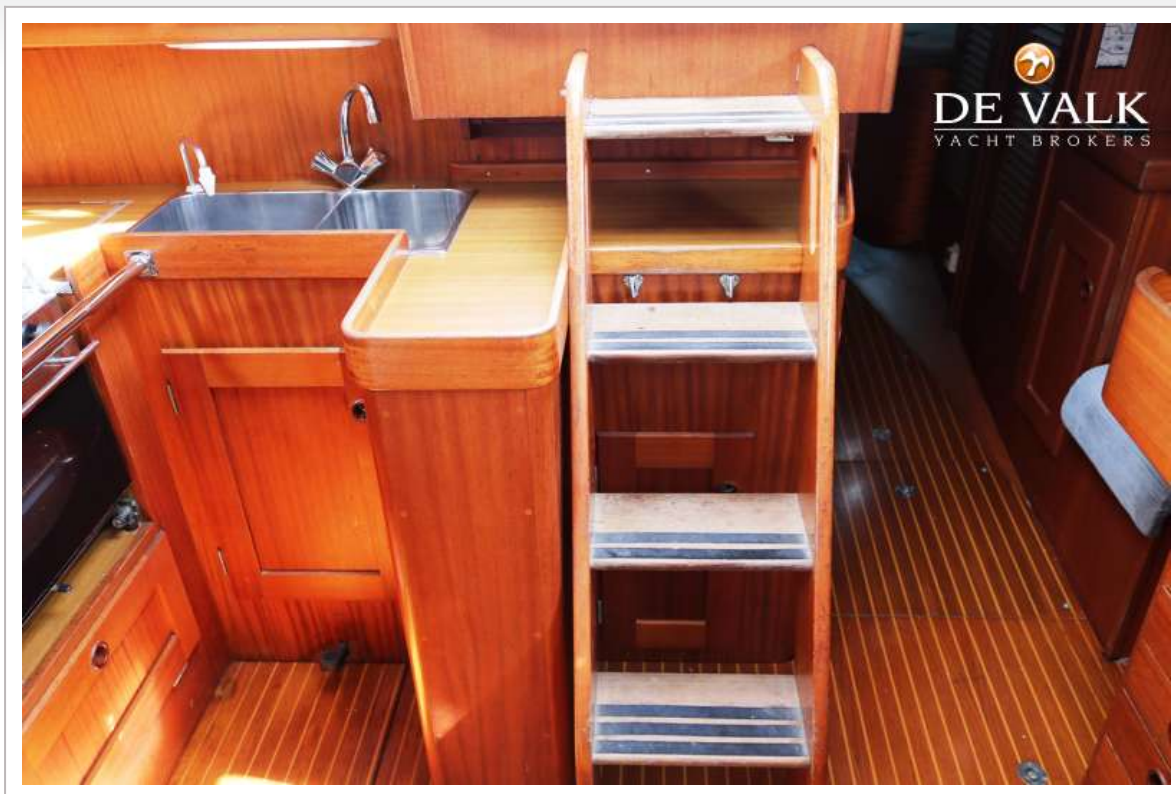


# HALLBERG RASSY 36

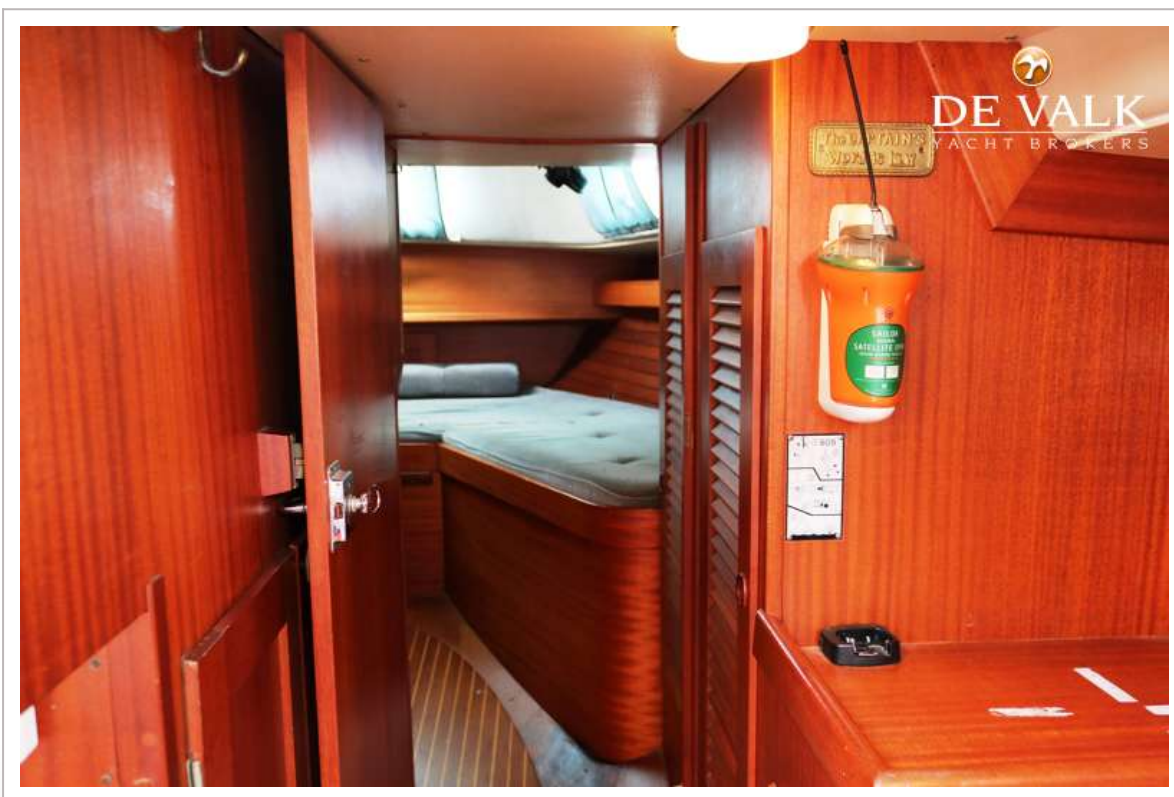




# HALLBERG RASSY 36

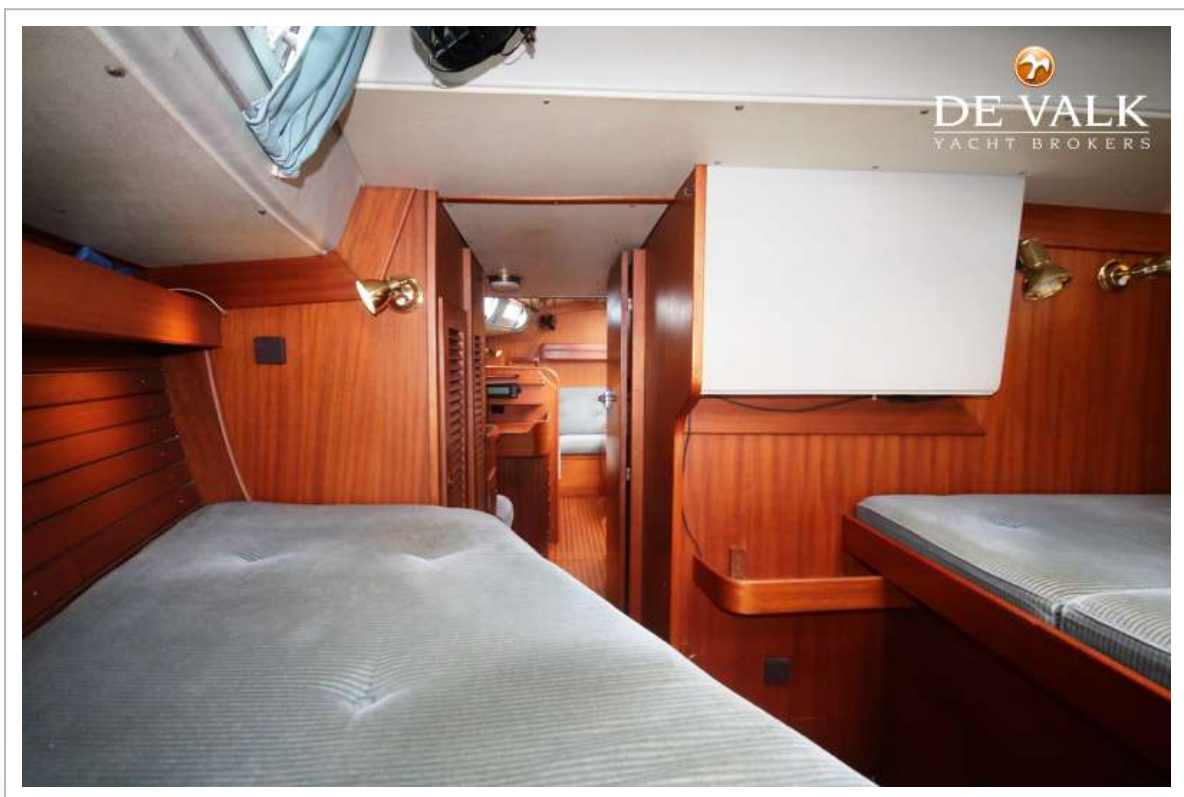
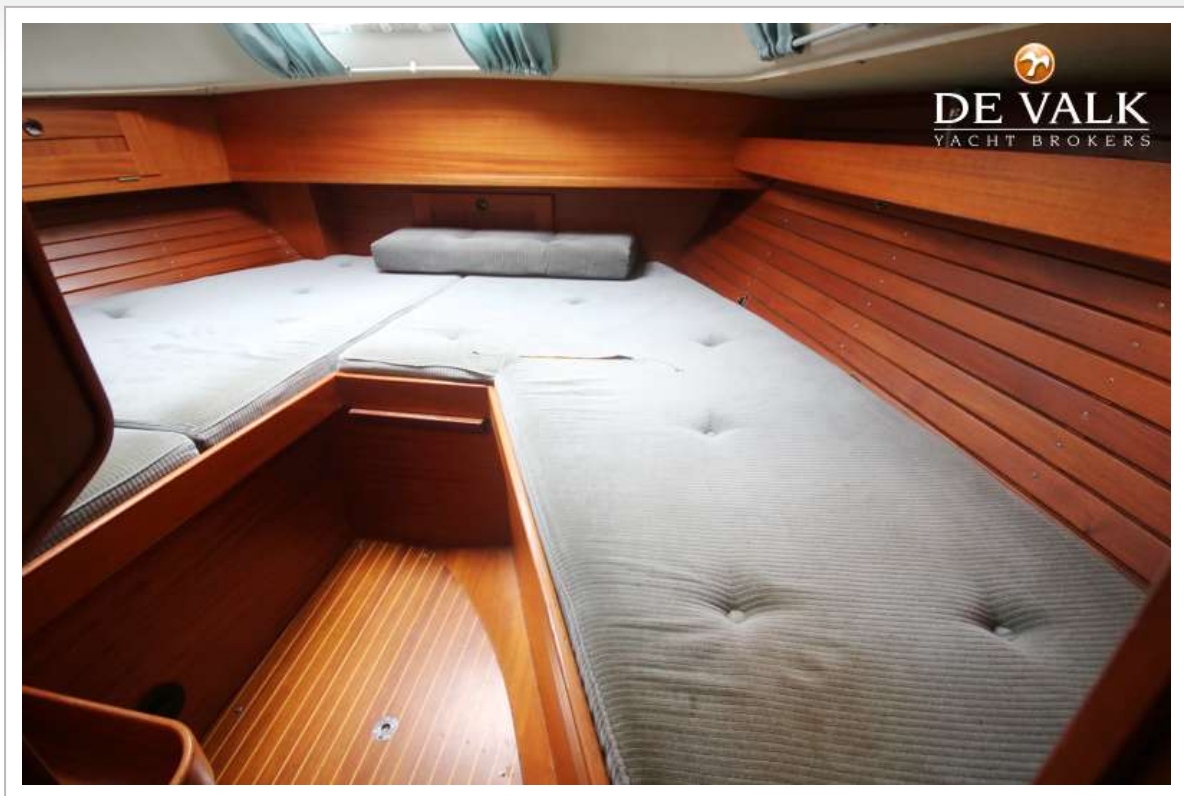


# HALLBERG RASSY 36





# HALLBERG RASSY 36



# HALLBERG RASSY 36





# HALLBERG RASSY 36



# HALLBERG RASSY 36

