



DE VALK
YACHT BROKERS



DEHLER 39 SQ



DE VALK
YACHT BROKERS

BROKERAGE | CHARTER | BERTHS | FINANCE | INSURANCE | YACHT MANAGEMENT

BROKER'S COMMENTS

The Dehler 39 SQ is fast, comfortable and luxurious sailing yacht, SQ in the type name stands for Speed & Quality. This Judel & Vrolijk design has been engineered to be an easy sailing yacht with great care for ergonomics, comfort and space as well on as under the deck. Now in the hands of her second owner she is still in good shape and well equipped. This kind of yacht can go for nice cruising over all kind of waters or, if you are more competitive, take her up for club - or more serious racing with good result

Reinier van der Wolf

SPECIFICATIONS

Dimensions	11.99 x 3.85 x 1.98 (m)	Builder	Dehler Yachtbau, GmbH
Built	2007	Cabins	3
Material	GRP	Berths	6
Engine(s)	1 x Volvo Penta D2-40 diesel	Hp/Kw	39.00 (hp), 28.67 (kw)
Asking price	sold (VAT)	Lying	at sales office

CONTACT

Sales office	De Valk Monnickendam B.V.	Telephone	+31 (0)299 65 63 50
Address	Hoogedijk 6 1145 PM Katwoude NL	E-mail	monnickendam@devalk.nl

DISCLAIMER

These particulars are given in good faith as supplied but cannot be guaranteed.



GENERAL

Model	DEHLER 39 SQ
Type	sailing yacht
LOA (m)	11,99
LWL (m)	11,80
Beam (m)	3,85
Draft (m)	1,98
Air draft (m)	18,95
Headroom (m)	1,97
Year built	2007
Builder	Dehler Yachtbau, GmbH
Country	Germany
Designer	Judel Vrolijk Design
Displacement (t)	7,5
CE norm	A
Hull material	GRP
Hull colour	white
Hull shape	round-bilged
Keel type	fin keel 3,0 to
Superstructure material	GRP
Rubbing strake	rubber Aluminium +
Deck material	GRP
Deck finish	Treadmaster
Superstructure deck finish	Treadmaster
Cockpit deck finish	teak
Antifouling (year)	5 layers of epoxy primer 2017
Dorades	1x
Window frame	aluminium
Window material	polycarbonate
Deckhatch	3x
Fuel tank (litre)	stainless steel 108



Level indicator (fuel tank)	meter on Calibra Sealine panel 428
Freshwater tank (litre)	polyethylene 240
Level indicator (freshwater)	meter on Calibra Sealine panel 428
Blackwater tank (litre)	stainless steel 50
Level indicator (blackwater)	meter on Calibra Sealine panel 428
Blackwater tank extraction	deck extraction + pump
Wheel steering	mechanical Lewmar
Emergency tiller	stainless steel
Extra info	Treadmaster on deck renewed in 2013. Teak cockpit floor renewed in 2013.

ACCOMMODATION

Cabins	3
Berths	6
Interior	cherry
Floor	teak and holly
Saloon	yes
Headroom saloon (m)	1,97
Heating	diesel ducted hot air Webasto
Chart table	yes
Aft Cabin	yes
Galley	yes
Countertop	corian
Sink	stainless steel 2x
Cooker	calor gas
Oven	yes
Fridge	yes
Hot water system	220V + engine Boiler QL
Water pressure system	electrical
Owners cabin	v-bed
Bed length (m)	2,05



Wardrobe	hanging/drawers/shelves
Guest cabin 1	double bed
Bed length (m)	1,97 x 1,45
Wardrobe	hanging
Bathroom	shared
Toilet	shared
Toilet system	manual Jabsco
Wash basin	in the bathroom
Shower	shared
Guest cabin 2	double bed
Bed length (m)	1,97 x 1,45
Wardrobe	hanging and drawers

MACHINERY

No of engines	1
Make	Volvo Penta
Type	D2-40
HP	39
kW	28,67
Fuel	diesel
Year installed	2007
Range (nm)	160
Engine hours	1970
Engine cooling system	freshwater heat exchanger
Drive	sail-drive
Saildrive seal	2016
Engine controls	bowden cable Volvo Penta
Exhaust	watercooled
Propeller type	folding
Propeller blades	yes
Manual bilge pump	yes



Electric bilge pump	yes
Electrical installation	12/220v
Start battery	1x 75Ah
Service battery	2x 210Ah
Battery monitor	on Calibra Sealine panel 428
Battery charger/inverter	yes
Shorepower	with cable

NAVIGATION

Compass	Suunto
Depth sounder	Raymarine ST60+ Depth
Log	Raymarine ST60+ Speed
Windset	Raymarine ST60+ Wind
Repeater	Raymarine ST60+ Graphic
VHF	with speaker in cockpit Raymarine RAY240E
Autopilot	Raymarine ST6002 Smart Pilot
GPS	Via Raymarine Hybrid Touch E-Series
Plotter	Raymarine Hybrid Touch E-Series

EQUIPMENT

Sprayhood	Grey 2019
Bathing platform	yes
Boarding ladder	stainless steel
Anchor	Delta
Dinghy	Honwave 2.70
Outboard	6 hp Mercury
Sea railing	wire
Grab rail (superstructure)	stainless steel
Pushpit	stainless steel
Pulpit	stainless steel
Radio-cd player	with USB connection JVC



Speakers in salon	yes
Fire extinguisher	yes

RIGGING

Rigging	sloop 9/10
Standing rigging	Dyform
Brand mast	Seldén
Material mast	aluminium
Spreaders	3
Mainsail	Doyle Raudaschl (2014)
Mainsail cover	Dehler Maindrop system
Genoa	Doyle Raudaschl (2014)
Genoa furler	Harken MK III
Code Zero	2017
Gennaker	yes
Removable innerforestay	yes
Backstay adjuster	mechanical Selden
Boomvang	tackle Selden Rodkicker
Genoa sheetwinches	2x Harken ST46
Halyard winches	Electric 1x Harken ST40
Spinnaker winch	2x Harken ST46
Multifunctional winches	1x Harken ST40
Spi-pole	carbon Harken



DEHLER 39 SQ



DEHLER 39 SQ



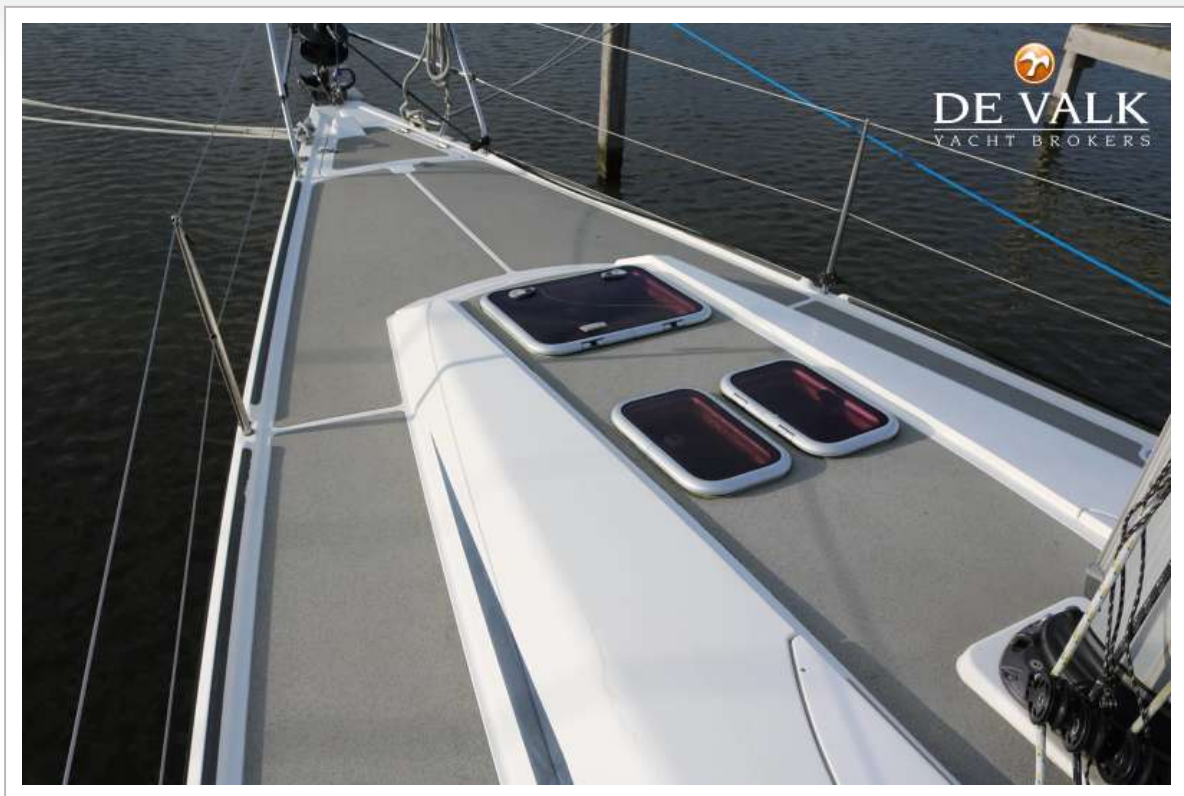
DEHLER 39 SQ



DEHLER 39 SQ



DEHLER 39 SQ



DEHLER 39 SQ



DEHLER 39 SQ



DEHLER 39 SQ



DEHLER 39 SQ



DEHLER 39 SQ



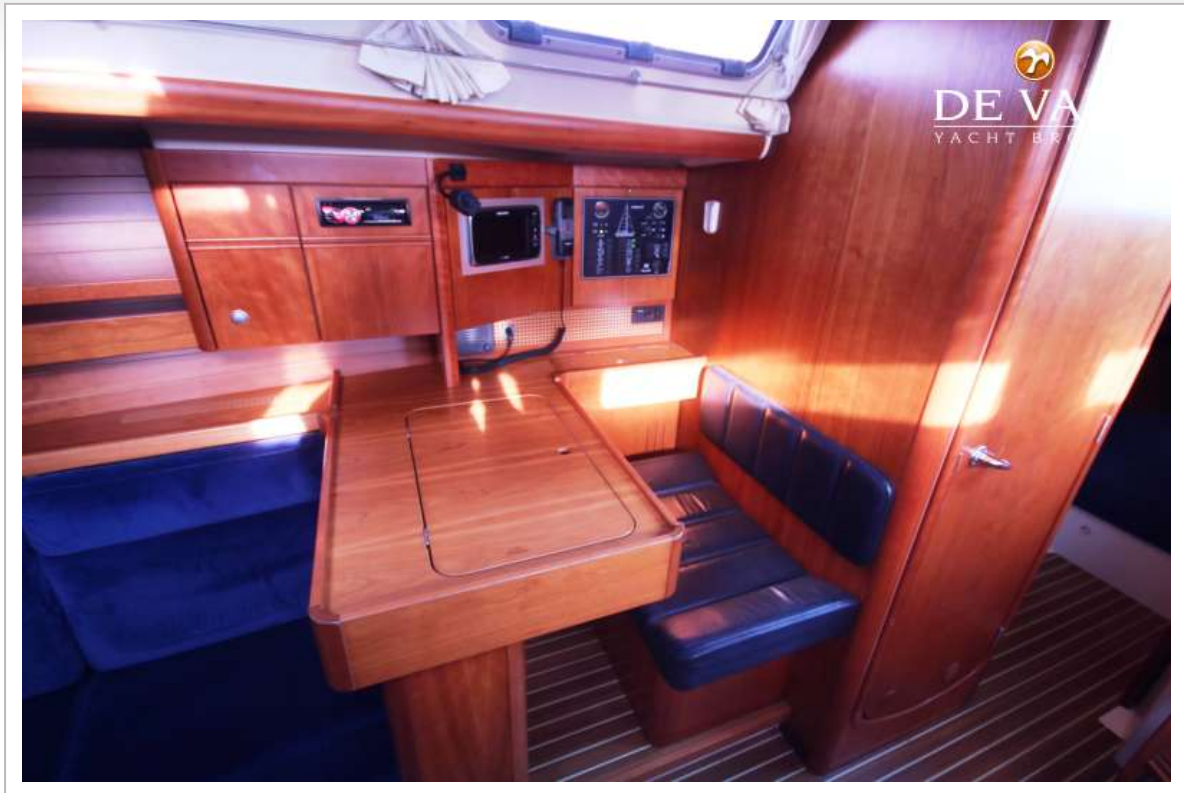
DEHLER 39 SQ



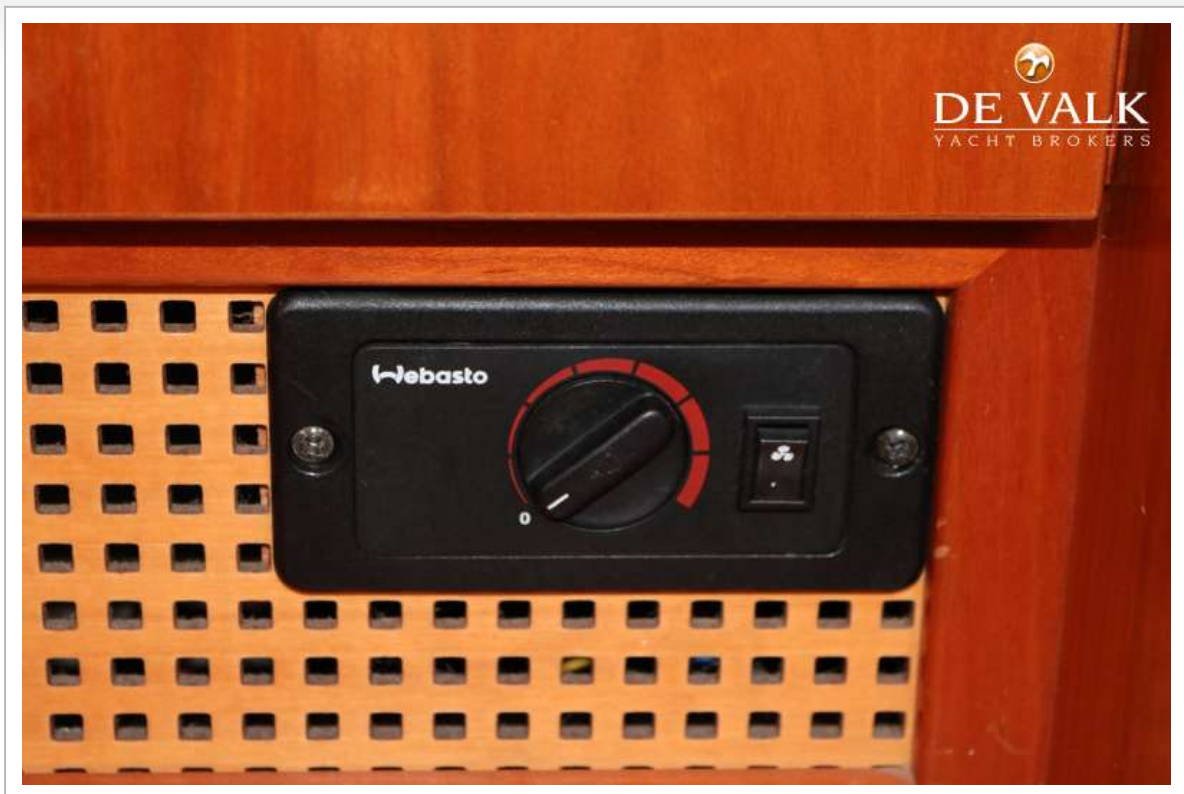
DEHLER 39 SQ



DEHLER 39 SQ



DEHLER 39 SQ



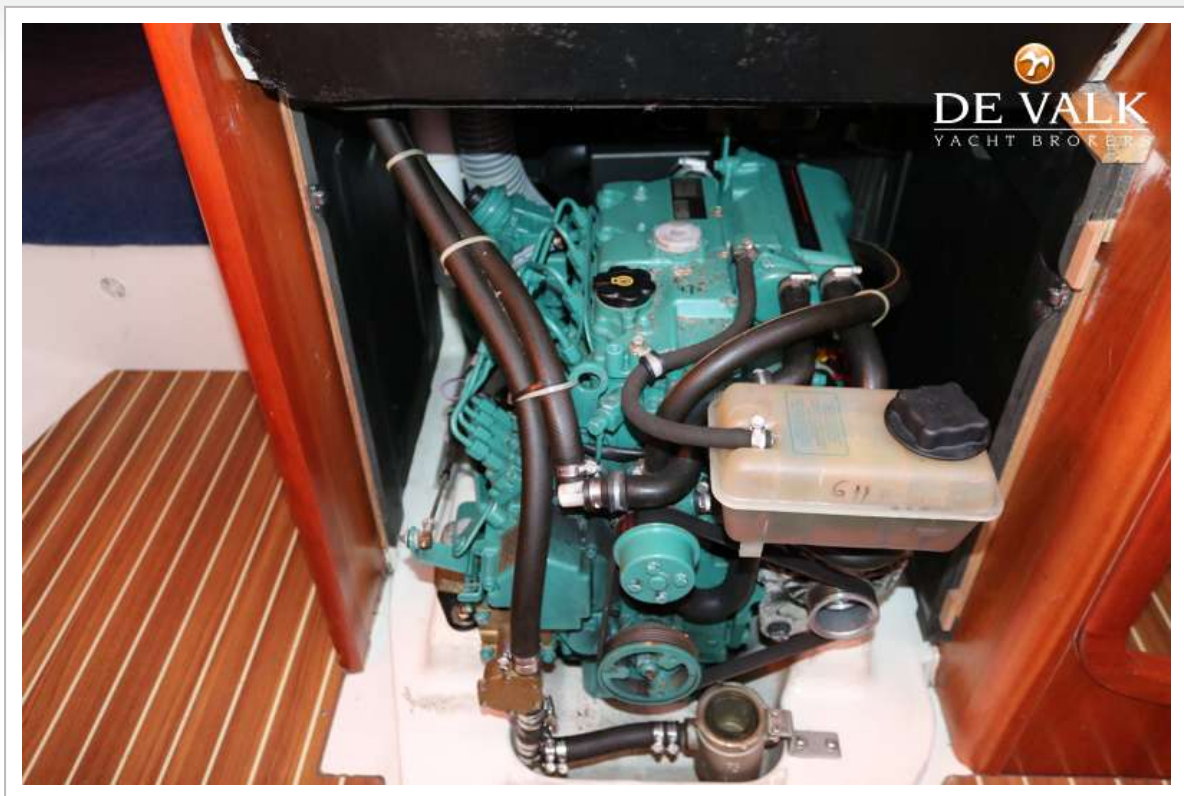
DEHLER 39 SQ



DEHLER 39 SQ



DEHLER 39 SQ



DEHLER 39 SQ



