



## BESTEWIND 50 PILOTHOUSE

# BESTEWIND 50 PILOTHOUSE

## BROKER'S COMMENTS

This Bestewind 50 Pilothouse is hull number 8 and offers you the best in this exclusive range. All hints & tips from the earlier builds together with the extensive cruising experience from the first and only owner, have been incorporated in her detailed build characteristics. With the use of modern materials really low maintenance and uncomplicated to operate. No complicated systems. With her deeper draft and taller rig, she performs better. Sailing with the benefit of a pilothouse is a great enjoy.

*Marc Weijenberg*

## SPECIFICATIONS

<b>Dimensions</b>	14.97 x 4.40 x 2.50 (m)	<b>Builder</b>	K&M Yachtbuilders
<b>Built</b>	2013	<b>Cabins</b>	3
<b>Material</b>	GRP	<b>Berths</b>	8
<b>Engine(s)</b>	1 x Yanmar 4JH4-HTE diesel	<b>Hp/Kw</b>	110.00 (hp), 80.85 (kw)
<b>Asking price</b>	sold (VAT )	<b>Lying</b>	elsewhere / Not at sales office

## CONTACT

<b>Sales office</b>	De Valk Sint Annaland B.V.	<b>Telephone</b>	+31 (0)166 601 000
<b>Address</b>	Koelhuisweg 4 4697 RM Sint Annaland NL	<b>E-mail</b>	sintannaland@devalk.nl

## DISCLAIMER

These particulars are given in good faith as supplied but cannot be guaranteed.



# BESTEWIND 50 PILOTHOUSE

## GENERAL

Model	BESTEWIND 50 PILOTHOUSE
Type	sailing yacht
LOA (m)	14,97
LWL (m)	13,72
Beam (m)	4,40
Draft (m)	2,50
Air draft (m)	23,00
Headroom (m)	1,94
Year built	2013
Builder	K&M Yachtbuilders
Country	The Netherlands
Designer	Gerard Dijkstra & Partners
Displacement (t)	16
Ballast (tonnes)	lead 7
CE norm	A
Hull material	GRP
Hull colour	white
Hull shape	round-bilged
Keel type	fin keel with bulb
Superstructure material	GRP
Rubbing strake	stainless steel
Deck material	GRP
Deck finish	Esthec composite teak-like decking
Cockpit deck finish	Esthec composite teak-like decking
Antifouling (year)	2020-2021
Dorades	4 x
Window frame	aluminium
Window material	double glazing Pilothouse (2019)
Deckhatch	7 x Lewmar
Portholes	



# BESTEWIND 50 PILOTHOUSE

<b>Insulation</b>	airfoil Hull sandwich core
<b>Radar arch</b>	Carbon antenna-pole aft
<b>Fuel tank (litre)</b>	polyethylene 420
<b>Fuel tank 2 (litre)</b>	200 (not in use)
<b>Fuel daytank (litre)</b>	aluminium 80
<b>Freshwater tank (litre)</b>	polyethylene 420 (in two tanks) + 50
<b>Blackwater tank (litre)</b>	polyethylene 2 x 60
<b>Blackwater tank extraction</b>	deck extraction + uw line
<b>Wheel steering</b>	Jefa RP100 with self adjusting rudder bearings
<b>Inside helm position</b>	Via autopilot
<b>Emergency tiller</b>	yes
<b>More info on hull</b>	3 x Epoxy coating + Coppercoat antifouling
<b>Extra info</b>	Stainless bow-strip for protection Stainless bow fitting
<b>Extra info</b>	Watertight bulkhead forward

## ACCOMMODATION

<b>Cabins</b>	3
<b>Berths</b>	8
<b>Interior</b>	Mahogany with light panelling
<b>Floor</b>	Maple/Esdoorn
<b>Pilot house</b>	With twin sofas (for 4 persons) and navigation area
<b>Headroom saloon (m)</b>	1,94-1,97
<b>Heating</b>	diesel ducted hot air Webasto Airtop 5kW with vents in every cabin, recently serviced.
<b>Chart table</b>	In pilothouse
<b>Dinette</b>	U-shaped with large folding-open table top
<b>Dinette to convert into berth</b>	2 x 1,95-0,60 mtr (single beds)
<b>Sliding door to cockpit</b>	Lower-in floor style door
<b>Galley</b>	U-shaped
<b>Countertop</b>	corian
<b>Sink</b>	stainless steel 2 x



# BESTEWIND 50 PILOTHOUSE

Cooker	Force 10, three burner stove, with remote shut-of valve
Oven	Force 10
Microwave/oven combi	Samsung (220v)
Fridge	Isotherm 12v, 130 ltrs
Freezer	Isotherm 12v, 40 ltrs
Hot water system	220V + engine Boyler (50 ltrs)
Water pressure system	electrical
Owners cabin	double bed Forward / voor / vorn
Bed length (m)	2,05 x 2,10 (biggger than standard)
Wardrobe	hanging/drawers/shelves
Bathroom	en suite I
Toilet	en suite
Toilet system	manual Rheinstrom
Wash basin	in the bathroom Corian
Shower	en suite
Guest cabin 1	double bed
Bed length (m)	2,03 x 1,30
Wardrobe	hanging and shelves
Bathroom	shared II
Toilet	
Toilet system	manual Rheinstrom
Wash basin	Corian
Shower	shared
Guest cabin 2	double bed
Bed length (m)	2,03 x 1,30
Wardrobe	hanging and shelves

## MACHINERY

No of engines	1
Make	Yanmar
Type	4JH4-HTE



# BESTEWIND 50 PILOTHOUSE

HP	110
kW	80,85
Fuel	diesel
Year installed	2013
Maximum speed (kn)	9
Cruising speed (kn)	7
Consumption (l/hr)	4,5
Engine hours	1350
Engine cooling system	freshwater heat exchanger
Drive	shaft
Shaft seal	Volvo Penta seal (2018)
Engine controls	bowden cable
Gearbox	Yanmar
Bowthruster	Sidepower, operated by foot-switches
Exhaust	watercooled
Thrust bearing	Aquadrive for silent running
Propeller type	folding Gori
Propeller blades	3
Propeller shaft material	stainless steel
Shaft lubrication	water
Manual bilge pump	2 x
Electric bilge pump	3 x
Electrical installation	12/220v
Generator	No, but ample place under cockpit floor
Start battery	1 x 70ah (2017)
Service battery	4 x 200ah Gel (2017/2020)
Battery monitor	Mastervolt View
Battery charger/inverter	Mastervolt 12v-100amp/220v- 2500watt
Wind generator	Watt-Seawind 12v
Shorepower	with cable
Watermaker	Hydrovane 260 (49ltr/hr) not used
Extra info	Twin fuel filter system Rope Cutter on propshaft



## Extra info

Engine-room access from top, front and back.

## NAVIGATION

### Compass

Plastimo Olympic 135

### Electric compass

Via autopilot

### Depth sounder

Raymarine I70

### Log

Raymarine I70

### Windset

Raymarine I70

### Repeater

Raymarine I70

### VHF

Raymarine E240 + cockpit connection and speaker

### VHF handheld

Icom

### Autopilot

Raymarine P70 + SPX core-pack + Jefa drive

### Rudder angle indicator

Via autopilot

### Radar

Raymarine RD418D digital

### GPS

Raymarine

### Plotter

Raymarine Hybrid E125 in pilothouse (visible from cockpit)

### Navtex

Navtex NX digital receiver

### Electronic chart(s)

yes

### AIS transponder

Raymarine 600

### EPIRB

yes

### Navigation lights

LED + 3-color masthead light

### Extra info

Sea-me antenna

## EQUIPMENT

### Bimini

yes

### Cockpit table

Folding (teak)

### Bathing platform

yes

### Boarding ladder

stainless steel

### Transom door

yes

### Deck shower

Hot + cold

### Anchor

Rocna



# BESTEWIND 50 PILOTHOUSE

Windlass	Lewmar V4
Capstan	Lewmar
Outboard support	yes
Davits	Stainless steel (removable)
Sea railing	wire
Grab rail (superstructure)	stainless steel
Railing side opening gates	2 x
Pushpit	yes
Pulpit	yes
Life raft	valise (or bag) (2018)
Life raft (pers)	6
Last life raft survey	2020/2021
Lifejackets	yes
Lifebuoy	yes
Fenders	yes
Mooring lines	yes
TV	LED 26" on lift in salon
TV receiver	DVBT antenna
Radio-cd player	Fusion
Cockpit speakers	yes
Speakers in salon	yes
Clock - barometer	yes
Fire extinguisher	(2018) + fire blankets

## RIGGING

Rigging	sloop-cutter
Standing rigging	(2013, checked 2018)
Brand mast	Seldén
Material mast	aluminium
Spreaders	Triple set
Keel stepped mast	yes





# BESTEWIND 50 PILOTHOUSE

<b>Mainsail cover</b>	With Lazy Jacks
<b>Battcars</b>	yes
<b>Fully battened mainsail</b>	Wittevrongel 72m2 (2013), 2 reefs
<b>High aspect</b>	Wittevrongel 49m2 (2013)
<b>Genoa</b>	Wittevrongel 77m2 (2013)
<b>Genoa furler</b>	Furlex 400
<b>Genoa cover</b>	yes
<b>Staysail furler</b>	Furlex 300
<b>Reefing System</b>	quick-one-line-reefing From cockpit
<b>Backstay adjuster</b>	hydraulic Navtec
<b>Boomvang</b>	Selden Rodkicker vang
<b>Primary sheet winch</b>	2 x Lewmar 65CEST Evo electric
<b>Halyard winches</b>	2 x Lewmar 55CEST Evo electric
<b>Multifunctional winches</b>	2 x Lewmar mainsheet winches
<b>Spi-pole</b>	carbon Selden
<b>Extra info</b>	Dye-one backstays for heavy duty sailing Lewmar deck hardware



# BESTEWIND 50 PILOTHOUSE

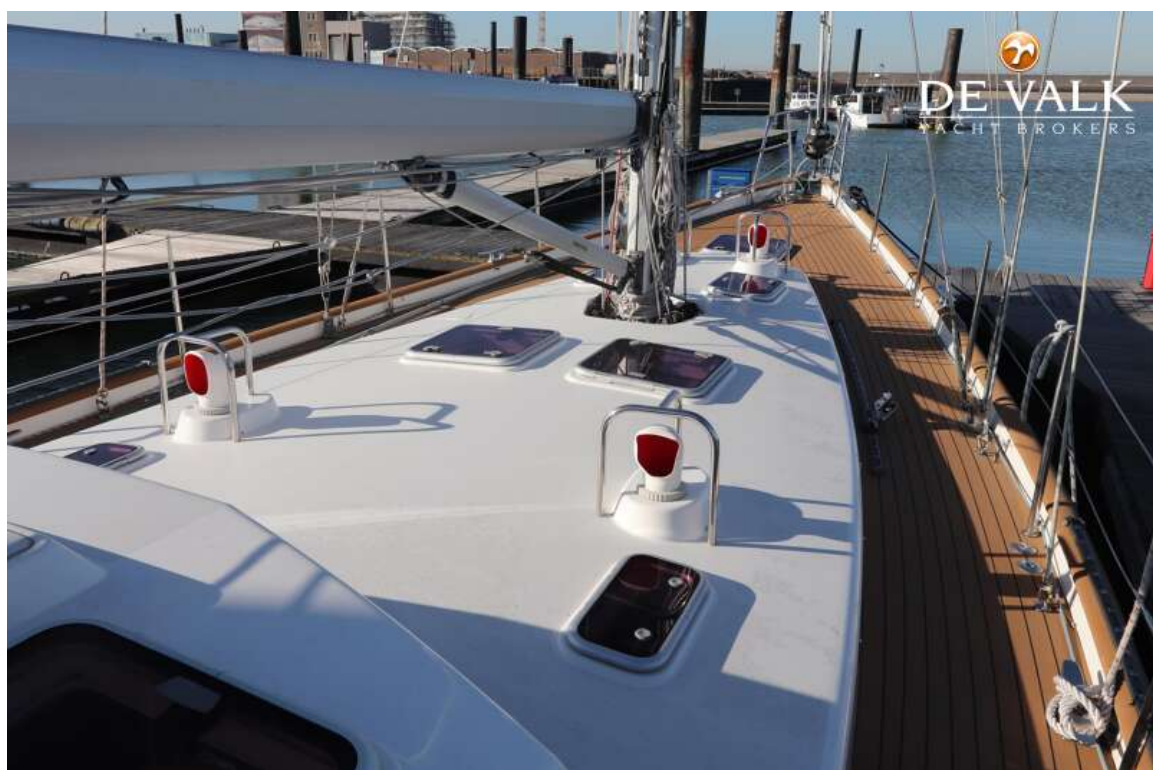


# BESTEWIND 50 PILOTHOUSE

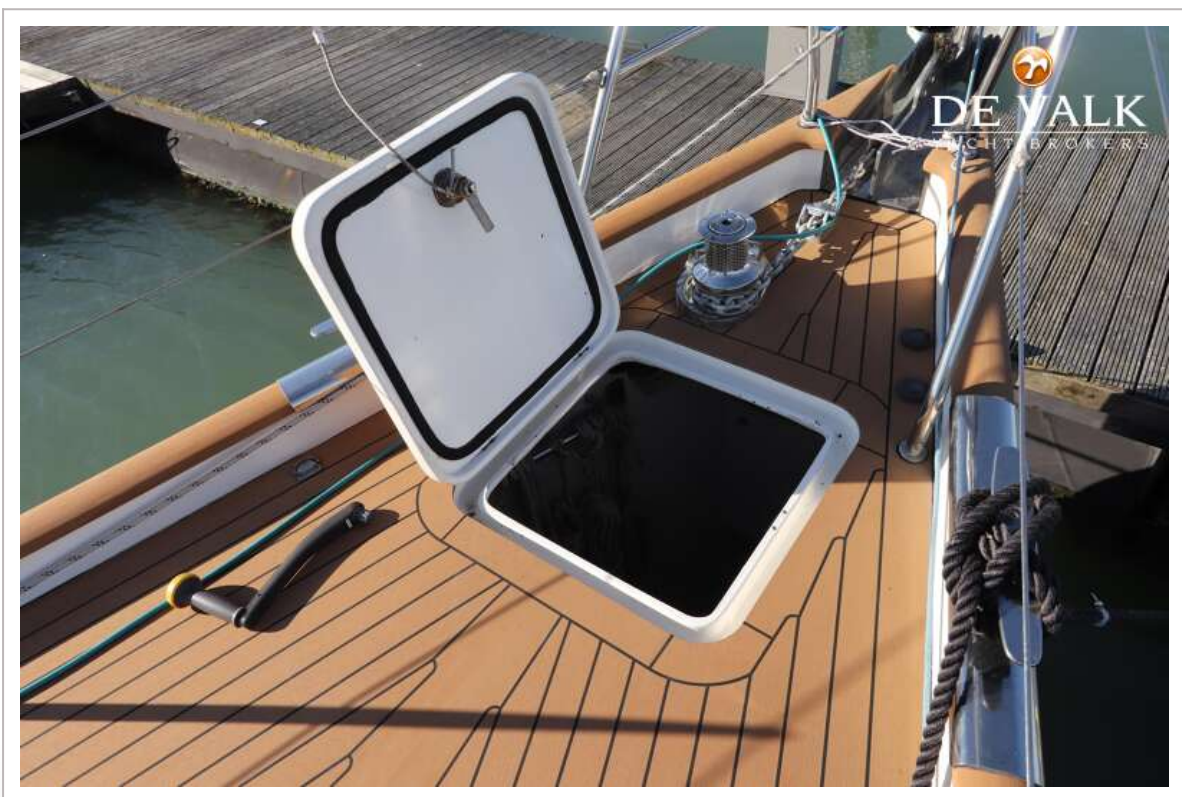
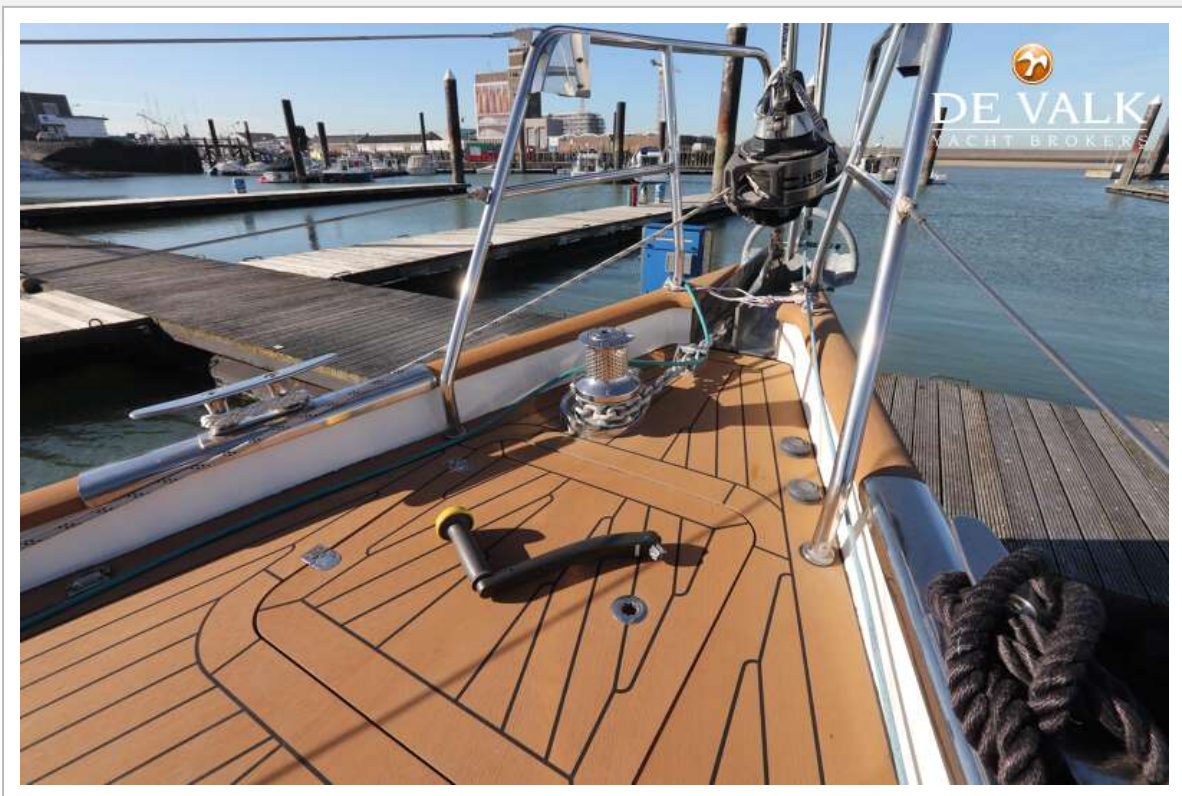




# BESTEWIND 50 PILOTHOUSE

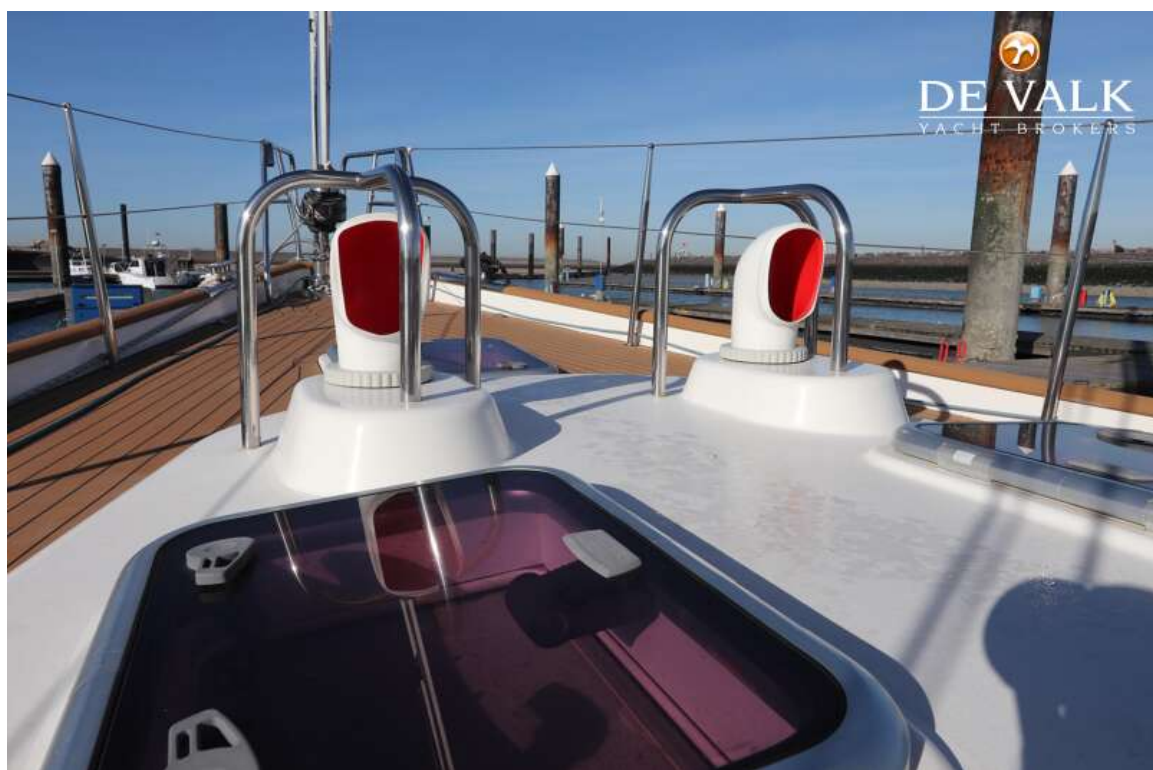


# BESTEWIND 50 PILOTHOUSE

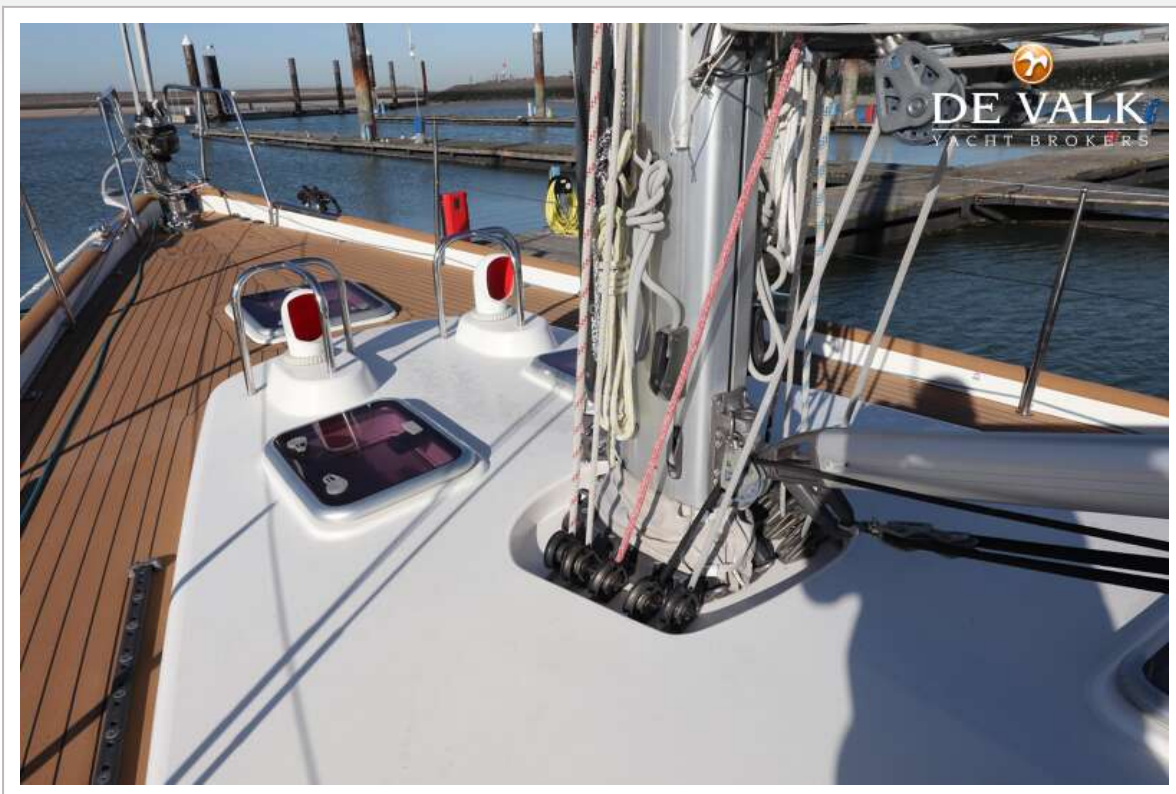




# BESTEWIND 50 PILOTHOUSE



# BESTEWIND 50 PILOTHOUSE



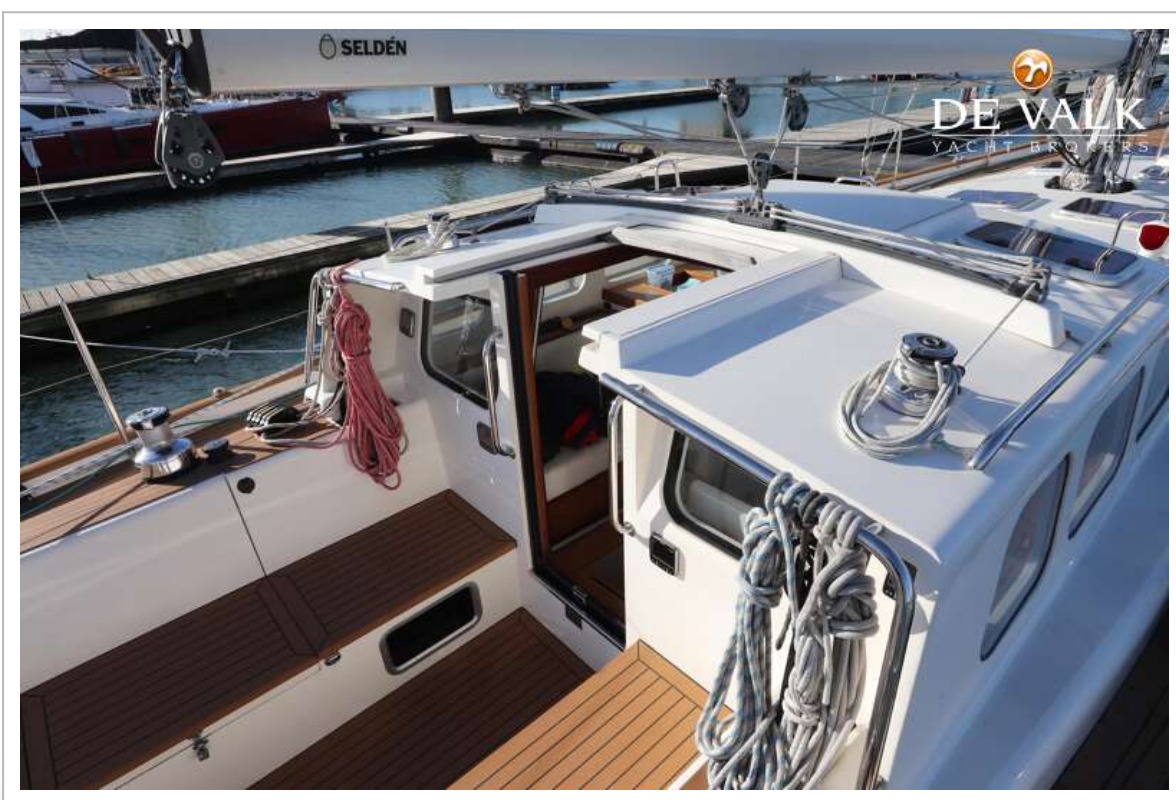
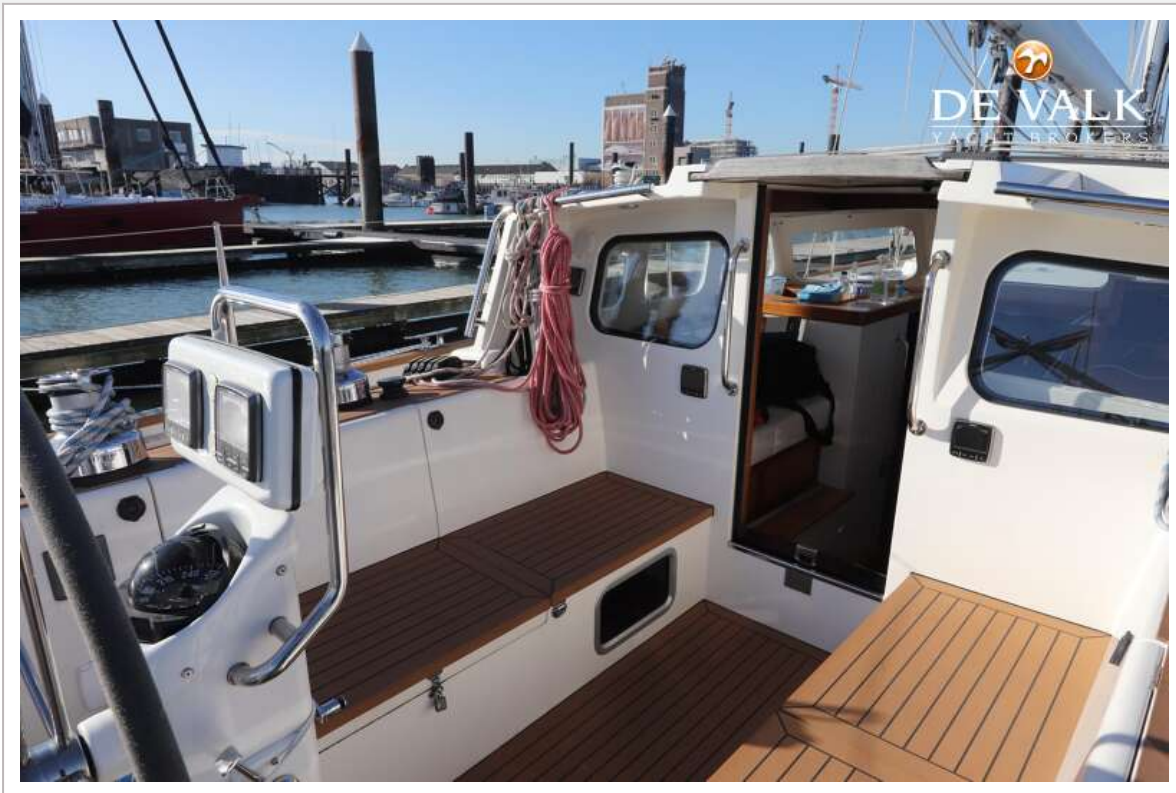


# BESTEWIND 50 PILOTHOUSE



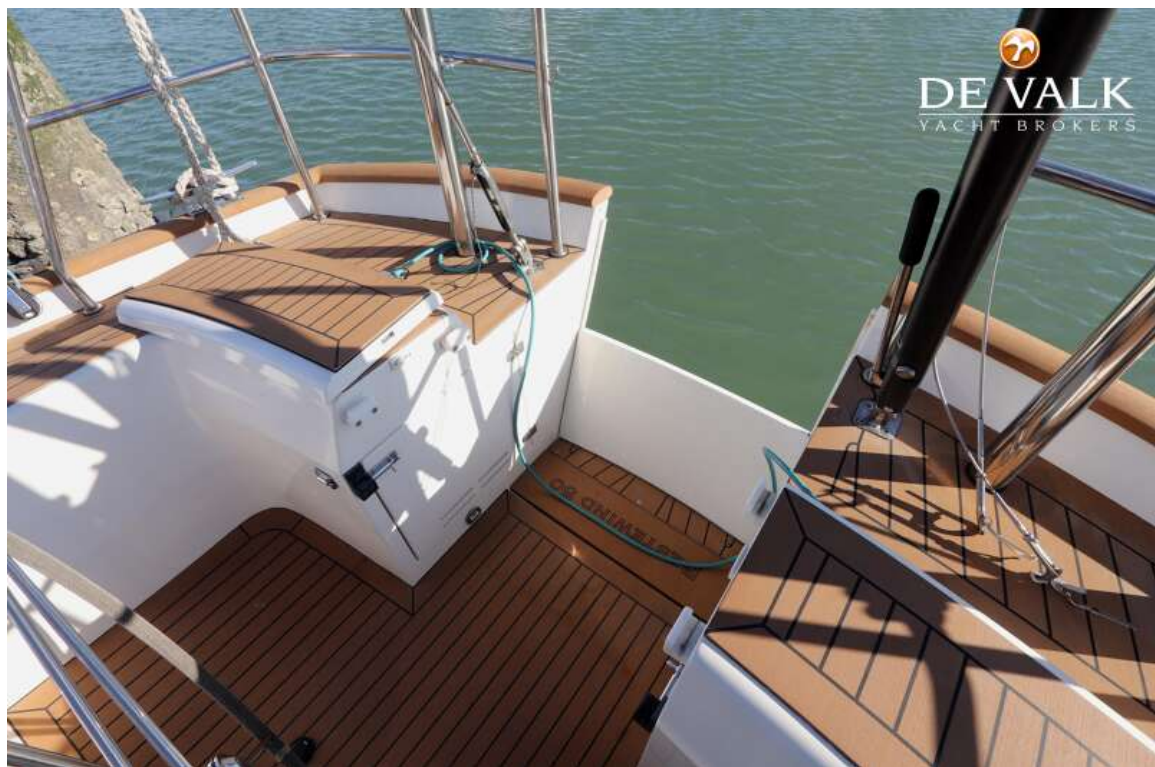


# BESTEWIND 50 PILOTHOUSE

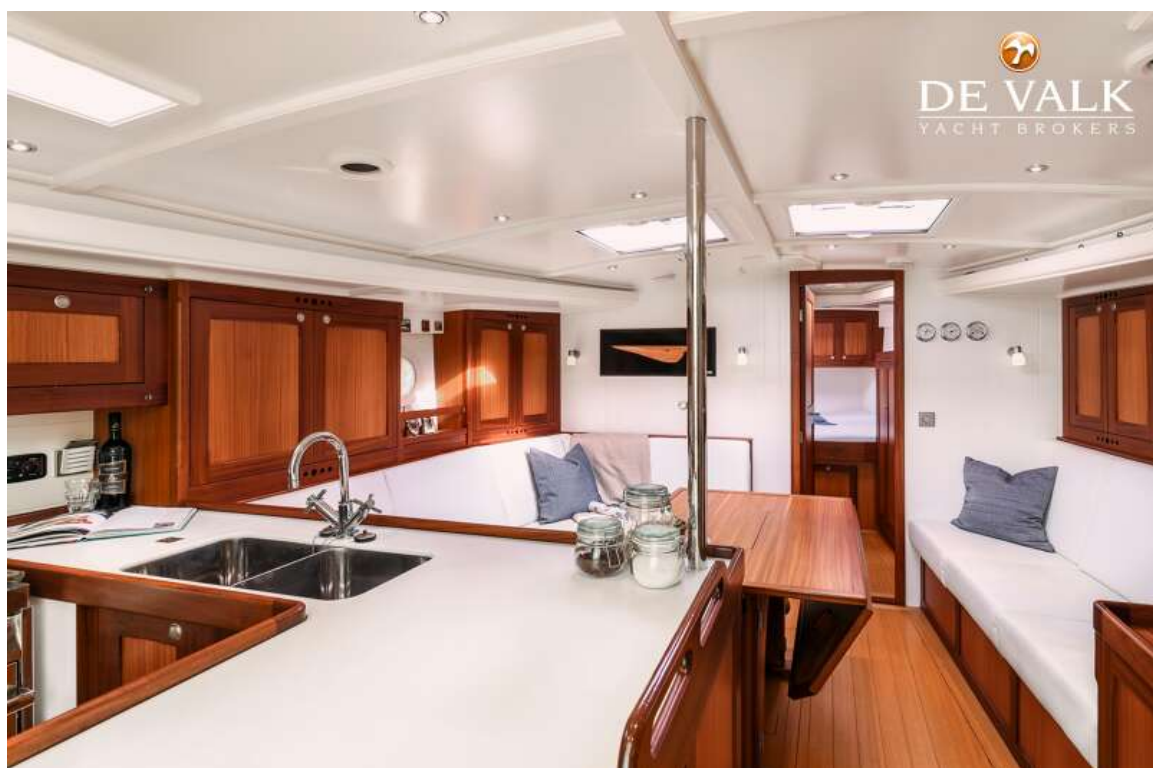




# BESTEWIND 50 PILOTHOUSE



# BESTEWIND 50 PILOTHOUSE





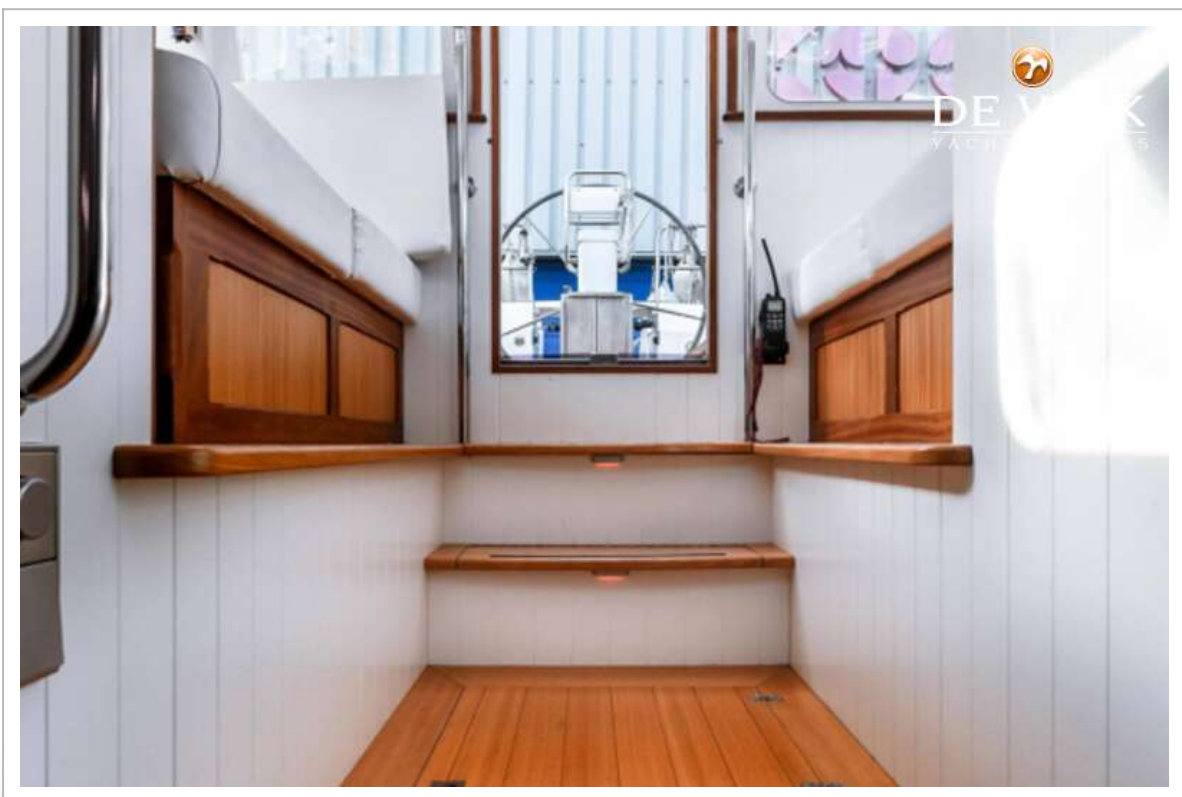
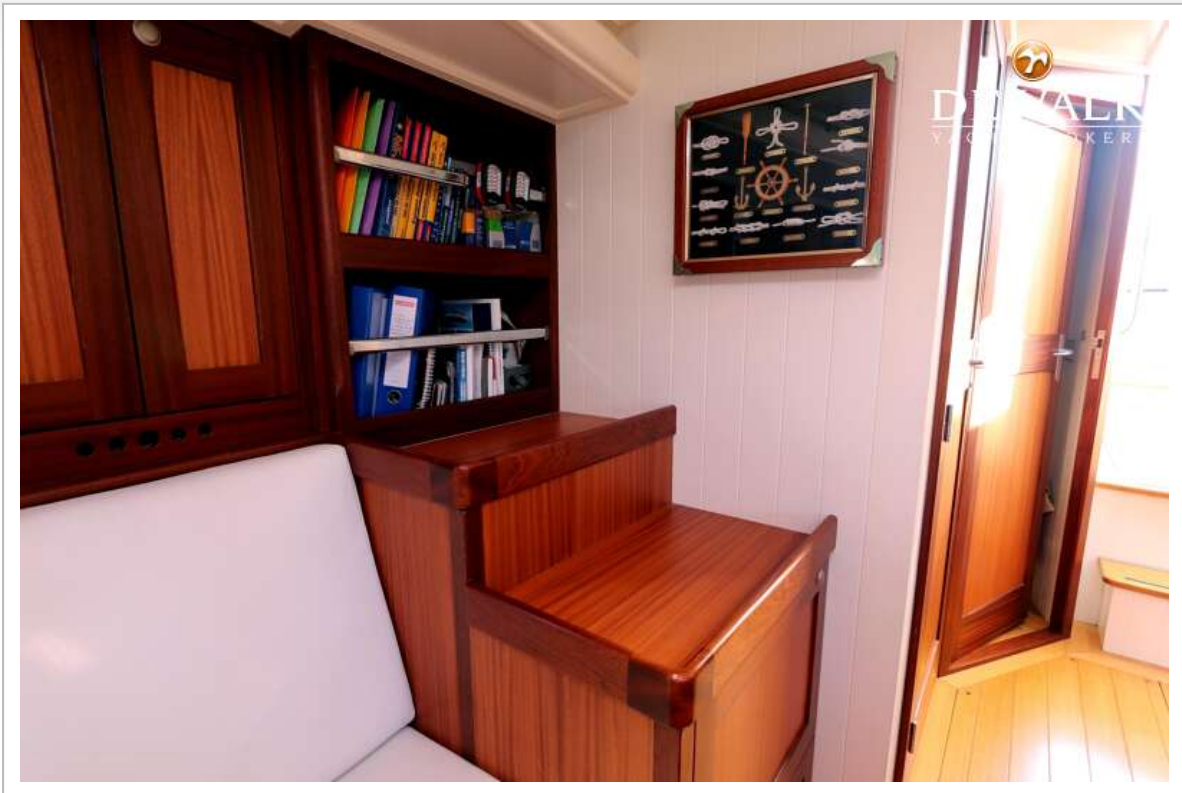
# BESTEWIND 50 PILOTHOUSE



# BESTEWIND 50 PILOTHOUSE

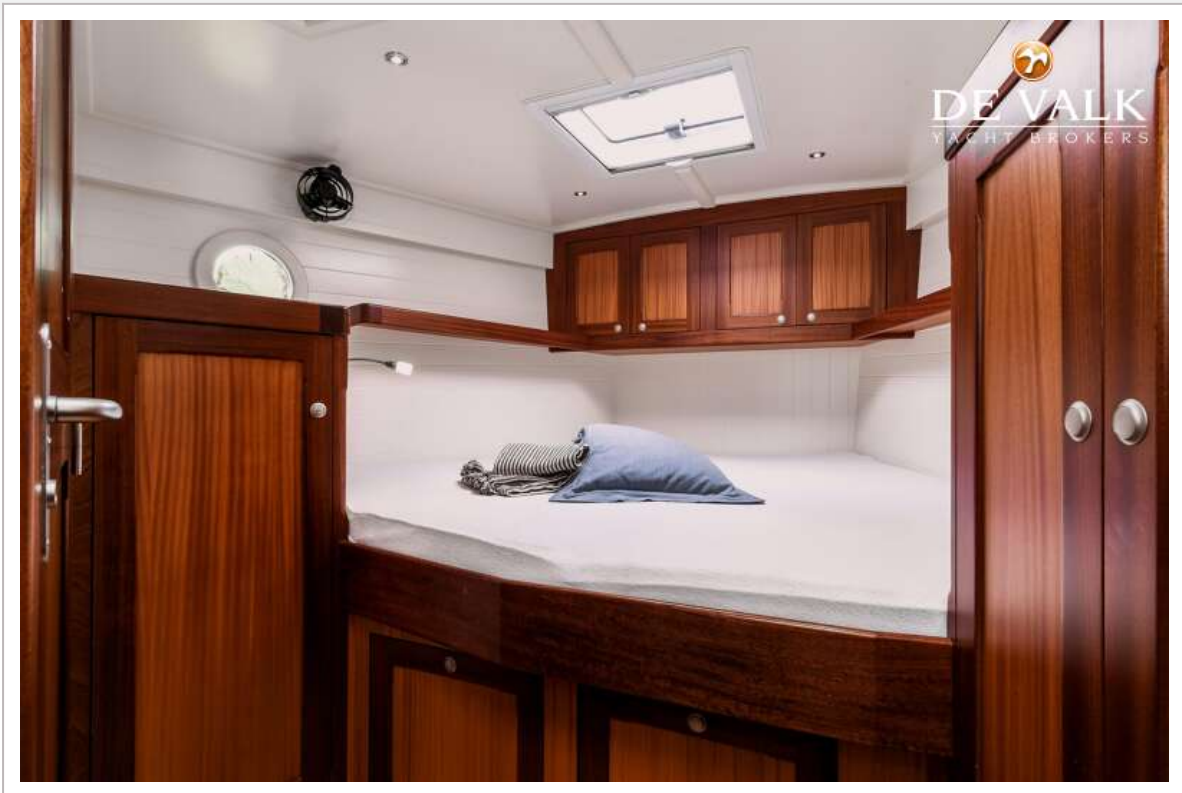


# BESTEWIND 50 PILOTHOUSE

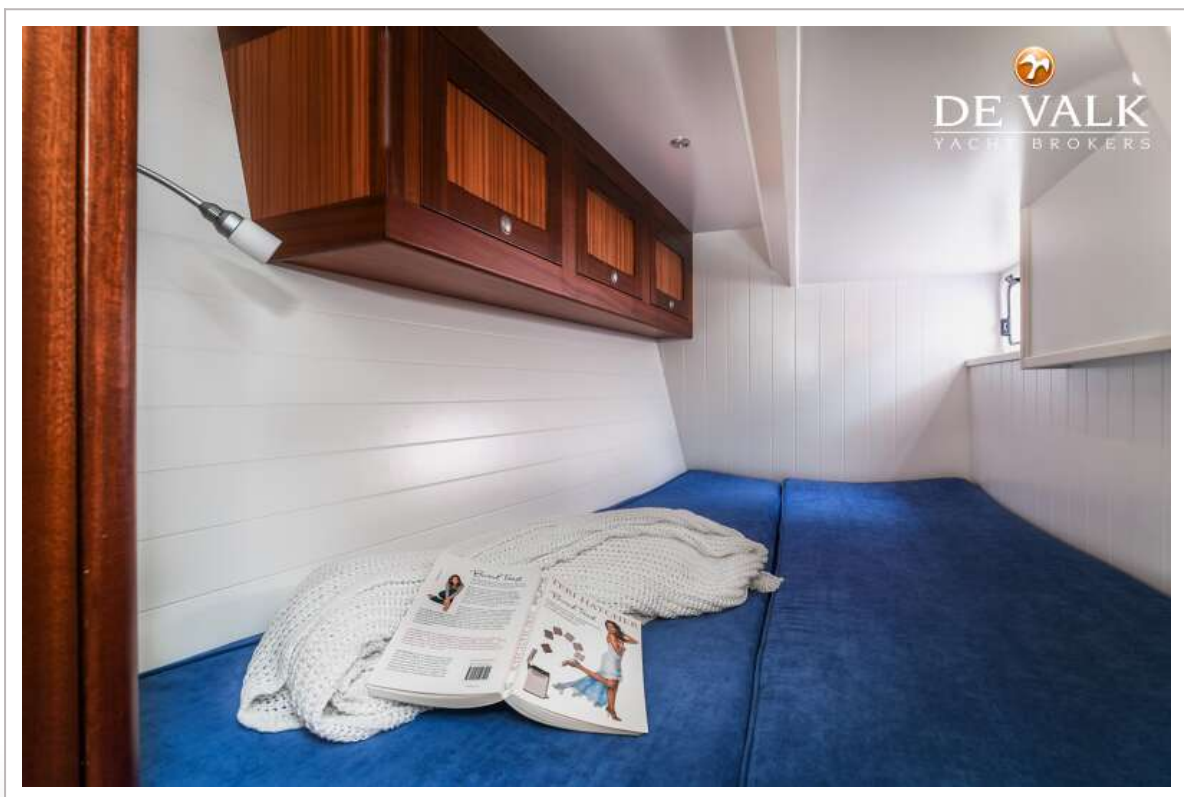
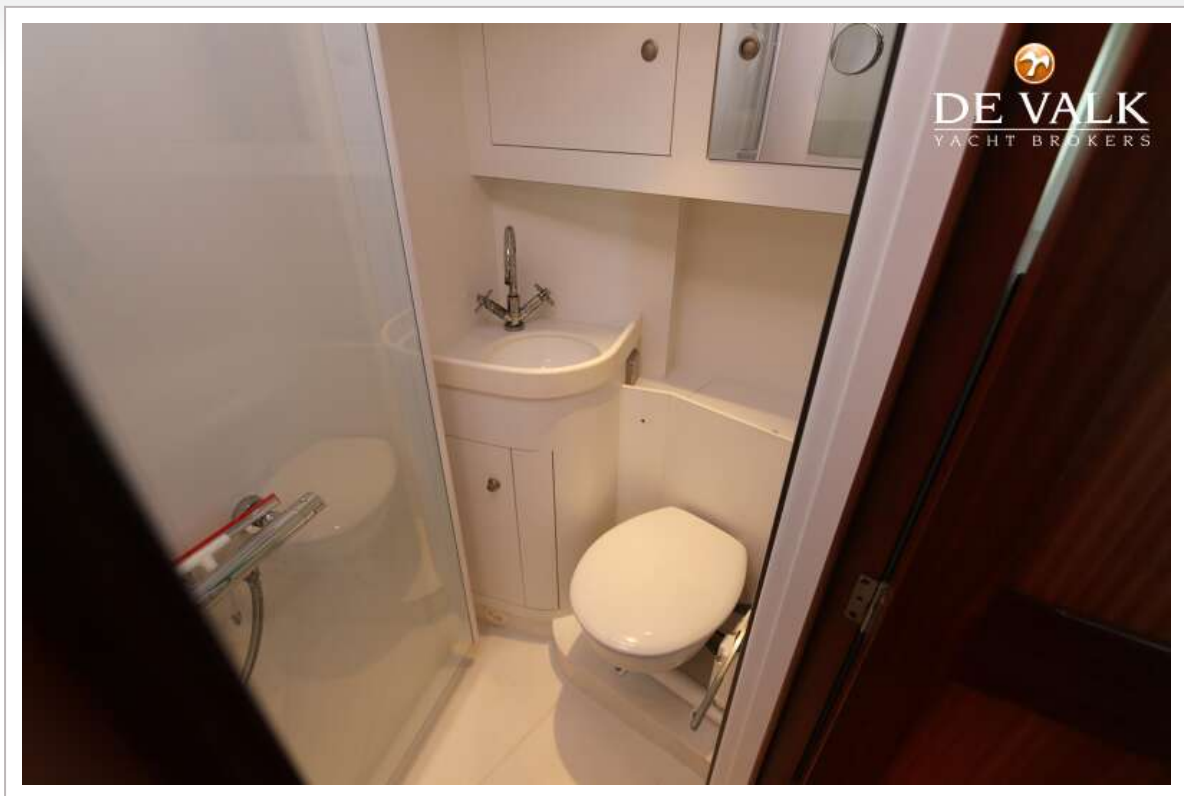




# BESTEWIND 50 PILOTHOUSE

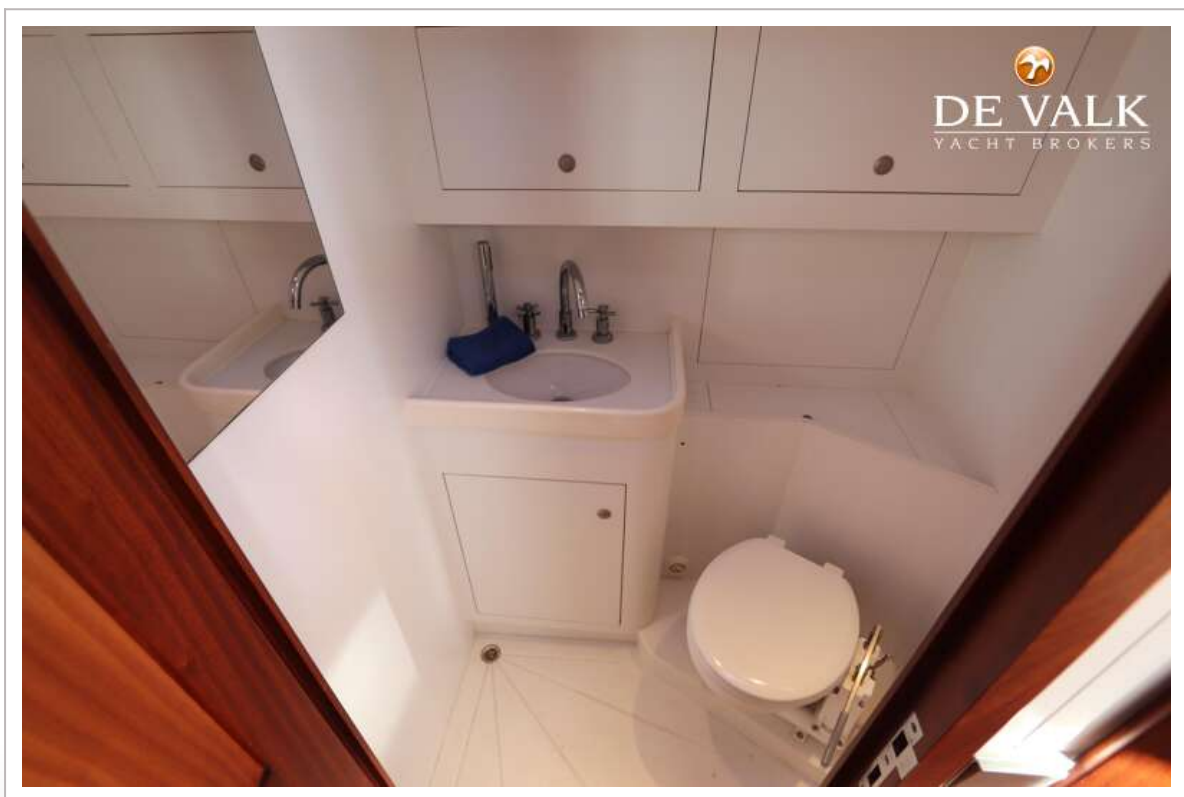
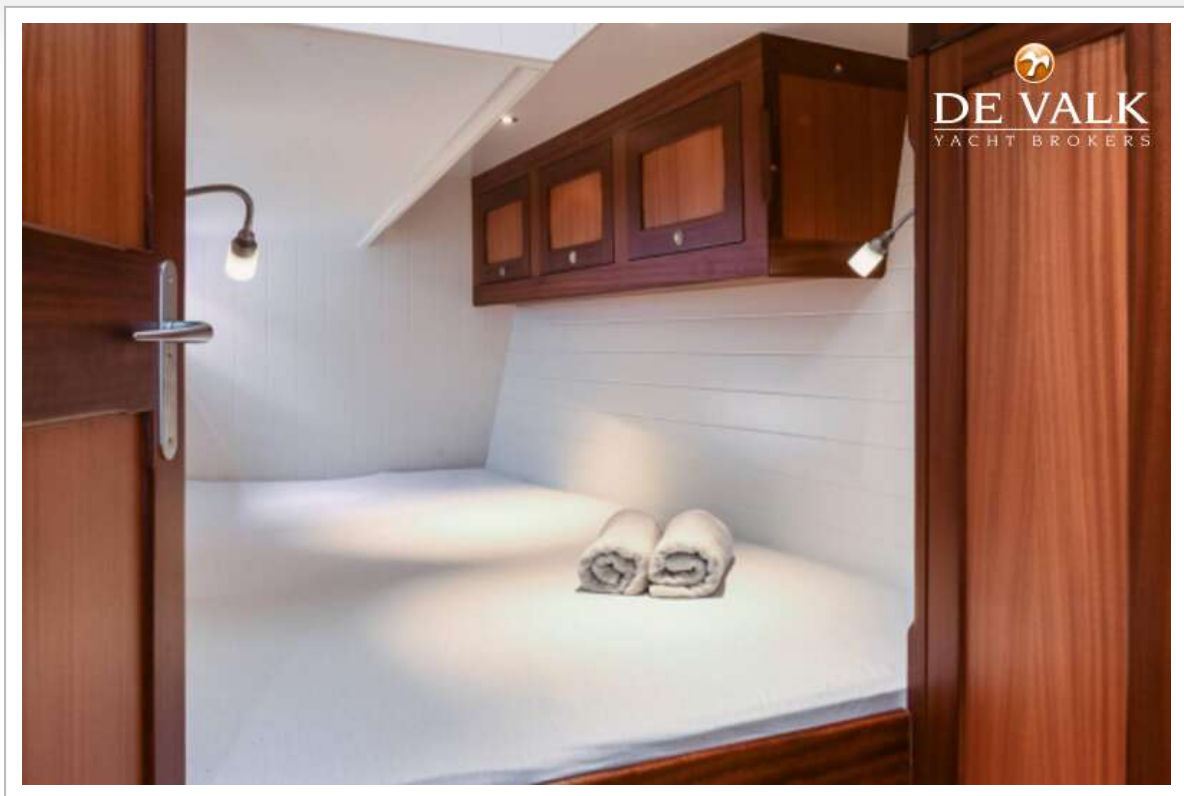


# BESTEWIND 50 PILOTHOUSE

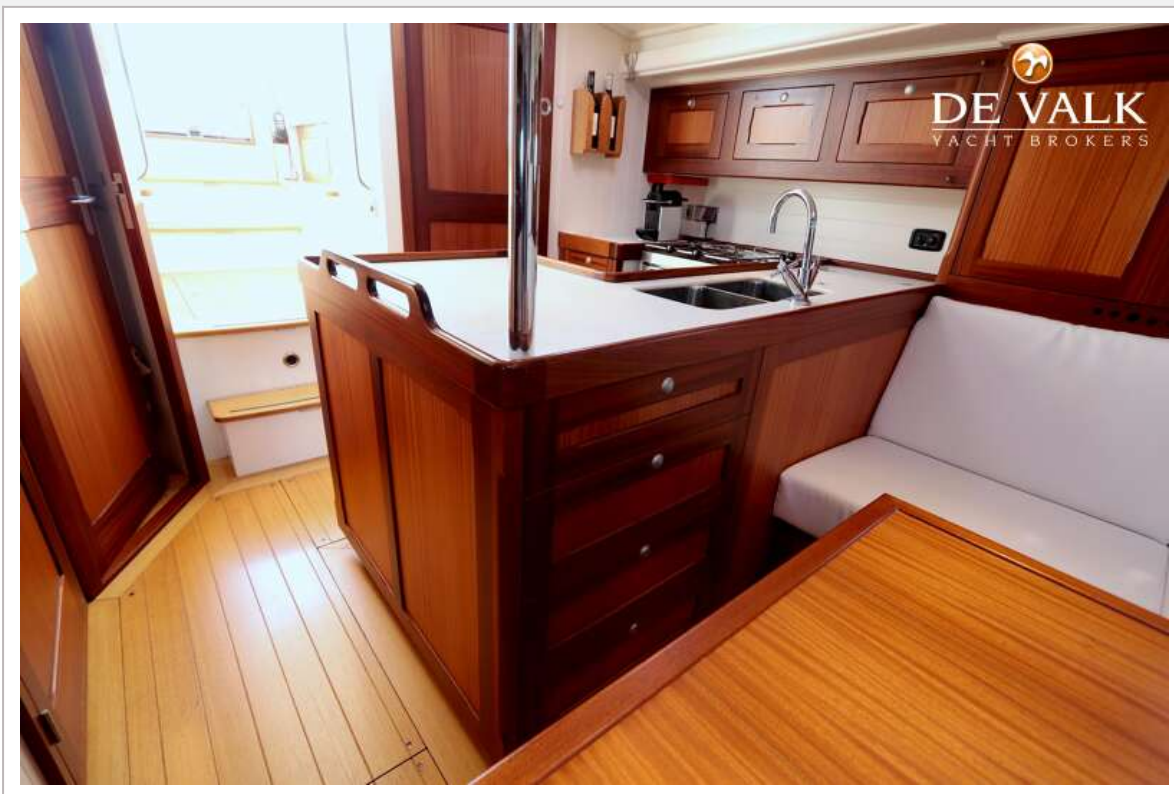




# BESTEWIND 50 PILOTHOUSE



# BESTEWIND 50 PILOTHOUSE

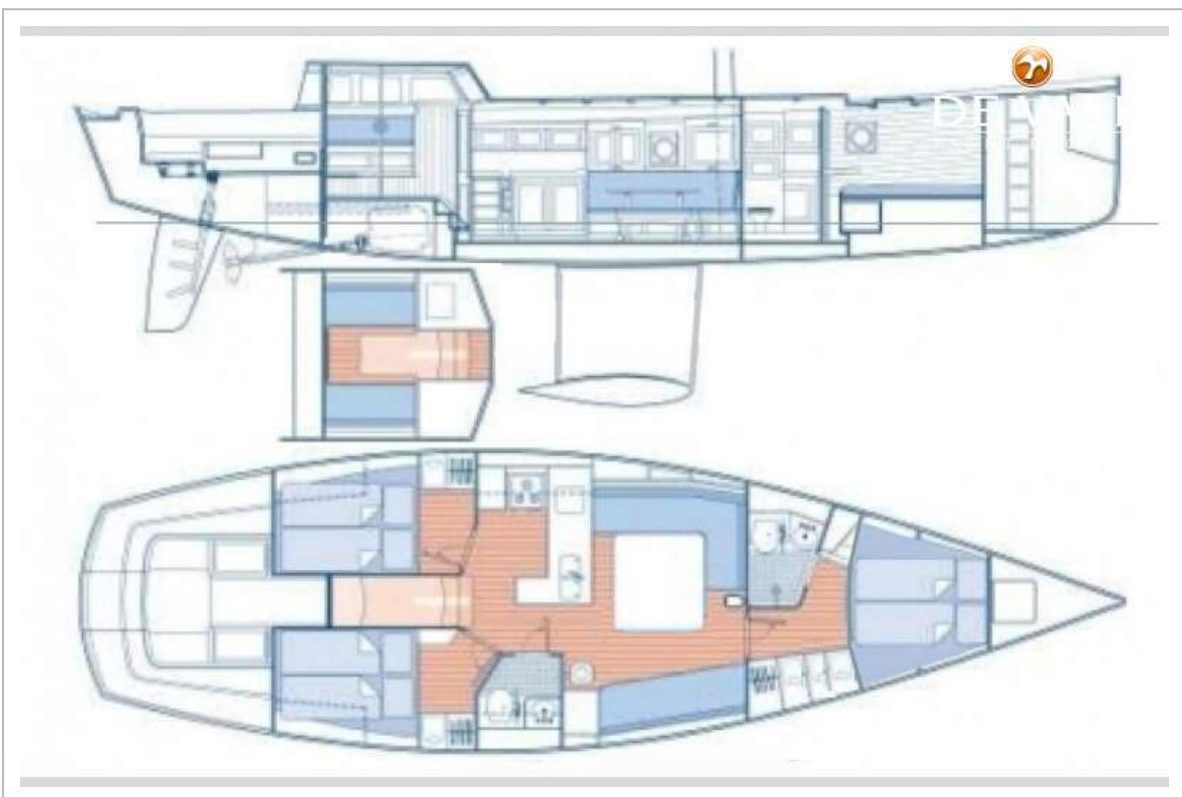


# BESTEWIND 50 PILOTHOUSE

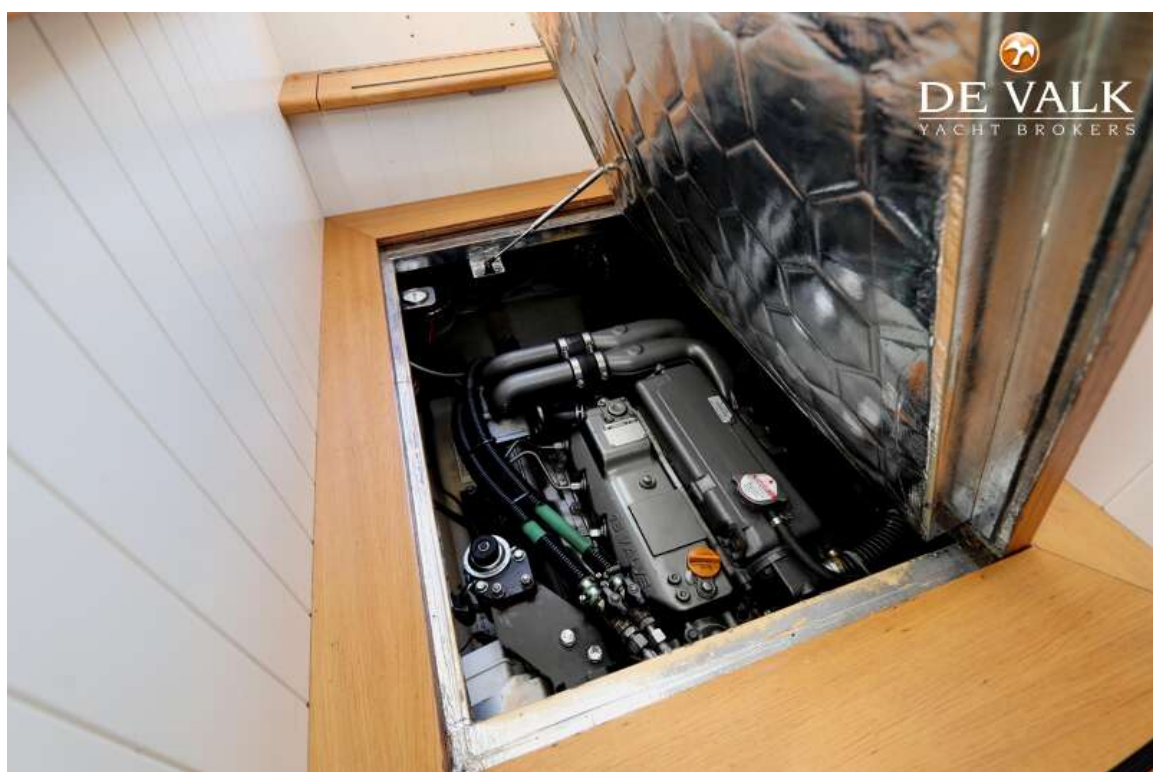




# BESTEWIND 50 PILOTHOUSE



# BESTEWIND 50 PILOTHOUSE



# BESTEWIND 50 PILOTHOUSE





# BESTEWIND 50 PILOTHOUSE

