



DE VALK  
YACHT BROKERS



PAVILJOENTJALK 14.50



DE VALK  
YACHT BROKERS

## BROKER'S COMMENTS

Very well maintained and luxury 14,50 m. paviljoentjalk from 1896. After a thorough refit in 2000 from among others the cherry interior, many improvements were made afterwards. Such as a new Vetus 128 hp common rail diesel engine, Python drive, leeboards and a luxurious lounge coach with bimini. Due to the double glazing, Trumatic heating and isolation she is very comfortable for a long stay on board. Easy to sail in the inland waters due to the mast lowering system to be operated by 1 person. A modern classic yacht suitable for a large sailing area.

*Sander van der Voorn*

## SPECIFICATIONS

<b>Dimensions</b>	14.50 x 3.43 x 0.70 (m)	<b>Builder</b>	Yard in Woerden
<b>Built</b>	1896	<b>Cabins</b>	3
<b>Material</b>	Steel	<b>Berths</b>	5
<b>Engine(s)</b>	1 x Vetus Deutz BF4M1012EC diesel	<b>Hp/Kw</b>	128.00 (hp), 94.08 (kw)
<b>Asking price</b>	sold (VAT )	<b>Lying</b>	at sales office

## CONTACT

<b>Sales office</b>	De Valk Monnickendam B.V.	<b>Telephone</b>	+31 (0)299 65 63 50
<b>Address</b>	Hoogedijk 6 1145 PM Katwoude NL	<b>E-mail</b>	monnickendam@devalk.nl

## DISCLAIMER

These particulars are given in good faith as supplied but cannot be guaranteed.



## GENERAL

Model	PAVILJOENTJALK 14.50
Type	sailing yacht
LOA (m)	14,50
Beam (m)	3,43
Draft (m)	0,70
Air draft (m)	13,00
Air draft min (m)	2,50
Headroom (m)	1,90
Year built	1896
Builder	Yard in Woerden
Country	The Netherlands
Displacement (t)	19
CE norm	NA
Hull material	steel
Hull colour	off-white
Hull thickness (mm)	4 - 6
Hull shape	flat bottom
Keel type	
Superstructure material	steel
Deck material	steel
Deck finish	teak
Superstructure deck finish	teak
Cockpit deck finish	teak
Antifouling (year)	new at launch
Window frame	brass 2011
Window material	double glazing HR++ tinted 2011
Insulation	glasswool
Mast can be lowered	hydraulic
Fuel tank (litre)	steel 200
Level indicator (fuel tank)	yes



Freshwater tank (litre)	stainless steel 200
Blackwater tank (litre)	steel
Wheel steering	hydraulic
Tiller	yes
Extra info	oak wooden rudder
Extra info	mast lowering system to be operated by 1 person through anchor winch
Extra info	electrically operated leeboards (2018)

## ACCOMMODATION

Cabins	3
Berths	5
Interior	cherry (2000)
Floor	wood
Open cockpit	yes
Aft deck	yes
Saloon	yes
Headroom saloon (m)	1,90
Heating	calorgas ducted hot air Trumatic
Chart table	yes
Aft Cabin	yes
Opening door to cockpit	yes
Galley	yes
Countertop	wood
Sink	stainless steel
Cooker	calor gas Three burners - thermal safed
Oven	Sharp oven/microwave
Fridge	220V
Freezer	Zanussi (2012)
Hot water system	220V + engine 30 liter
Water pressure system	electrical 12V Hydrofor



Owners cabin	double bed
Bed length (m)	2,00
Wardrobe	hanging and shelves
Bathroom	separate
Toilet	shared
Toilet system	electric
Wash basin	in the bathroom
Shower	shared
Guest cabin 1	twin single
Bed length (m)	2,00
Wardrobe	drawers
Guest cabin 2	single bed
Extra info	fixed floor construction with inspection hatches.
Extra info	Two gas bottles in gas locker (steel)

## MACHINERY

No of engines	1
Make	Vetus Deutz
Type	BF4M1012EC
HP	128
kW	94,08
Fuel	diesel
Year installed	2004
Maximum speed (kn)	9
Engine hours	635
Engine cooling system	freshwater heat exchanger
Drive	shaft
Gearbox	mechanical
Bowthruster	electric Vetus
Exhaust	watercooled
Thrust bearing	Python drive (2004)



Propeller type	fixed
Propeller blades	Bronze 4
Propeller shaft material	stainless steel 2004
Shaft lubrication	water
Electric bilge pump	through deck wash pump
Electrical installation	6 groups with automatic fuses 12/230V
Batteries	6
Start battery	1 x
Service battery	3 x 175 Ah (2020)
Windlass battery	for operate swords 2 x
Battery monitor	Vetus battery watch
Battery charger	Mastervolt 12 V 60A
Inverter	Mastervolt 12 V 2.000 Watt
Shorepower	with cable
Extra info	120A alternator on the engine (2012) Iskra
Extra info	prepared for connection Generator

## NAVIGATION

Compass	Setral Moore
VHF	Simrad RS 8300
GPS	Geonav

## EQUIPMENT

Cockpit cover	above sun deck 2019
Winter cover	2011
Bathing platform	yes
Deck shower	yes
Anchor	
Anchor chain	yes
Anchor 2	Danforth
Chain counter	yes



Windlass	hydraulic
Fire extinguisher	yes
Extra info	covered lounge sundeck in cockpit 2019

## RIGGING

Rigging	gaff-rig
Standing rigging	wire
Material mast	wood Oregon pine
Mast lowering system	by anchor winch, headway then approx. 2.50 m.
Mainsail	Dark brown
Mainsail cover	yes
Jib	Dark brown
Yankee	unused Dark braun New
Primary sheet winch	Lewmar 2 x ST
Halyard winches	3 x roll hallyard
Multifunctional winches	Strikwerda
Extra info	interior renewed 2000
Extra info	Strikwerda copper winch











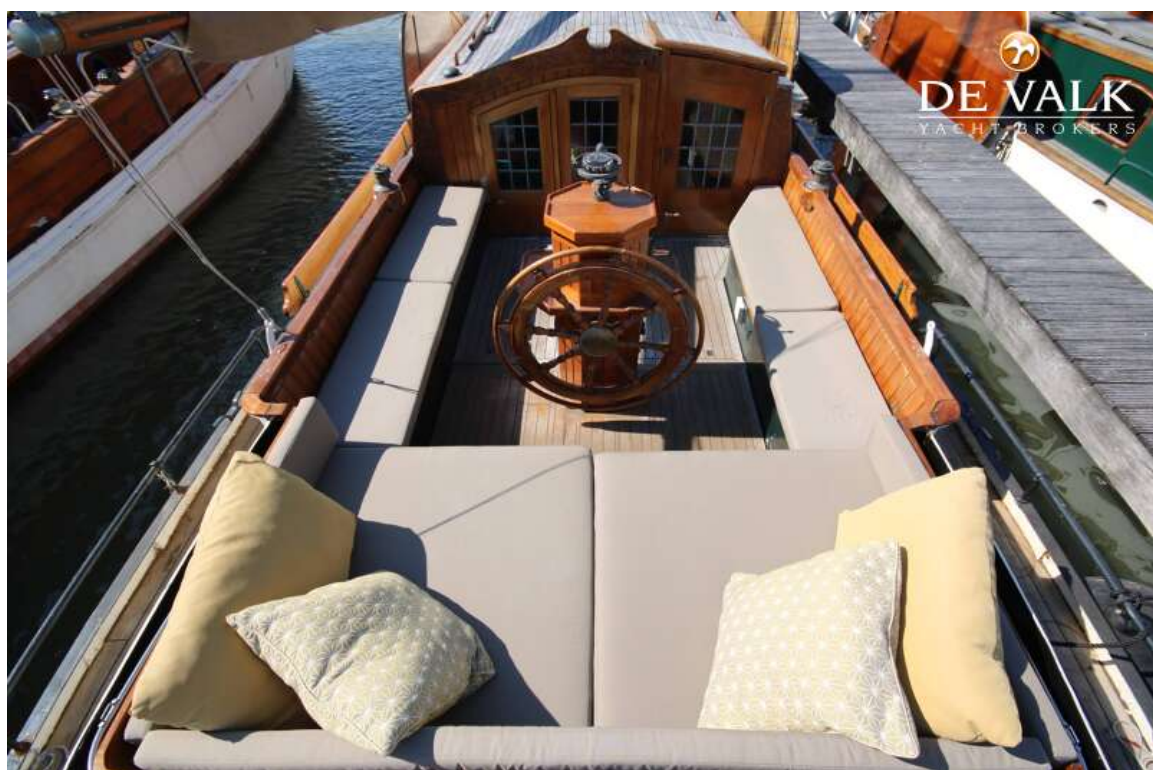






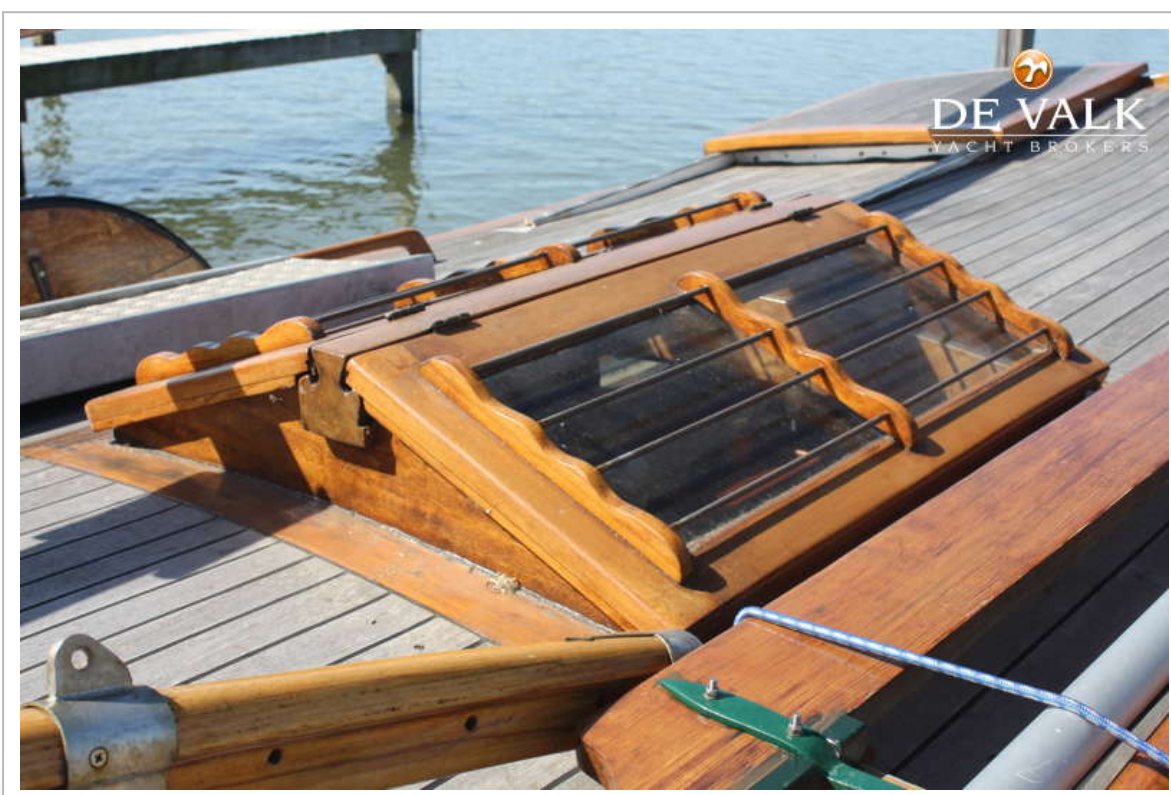
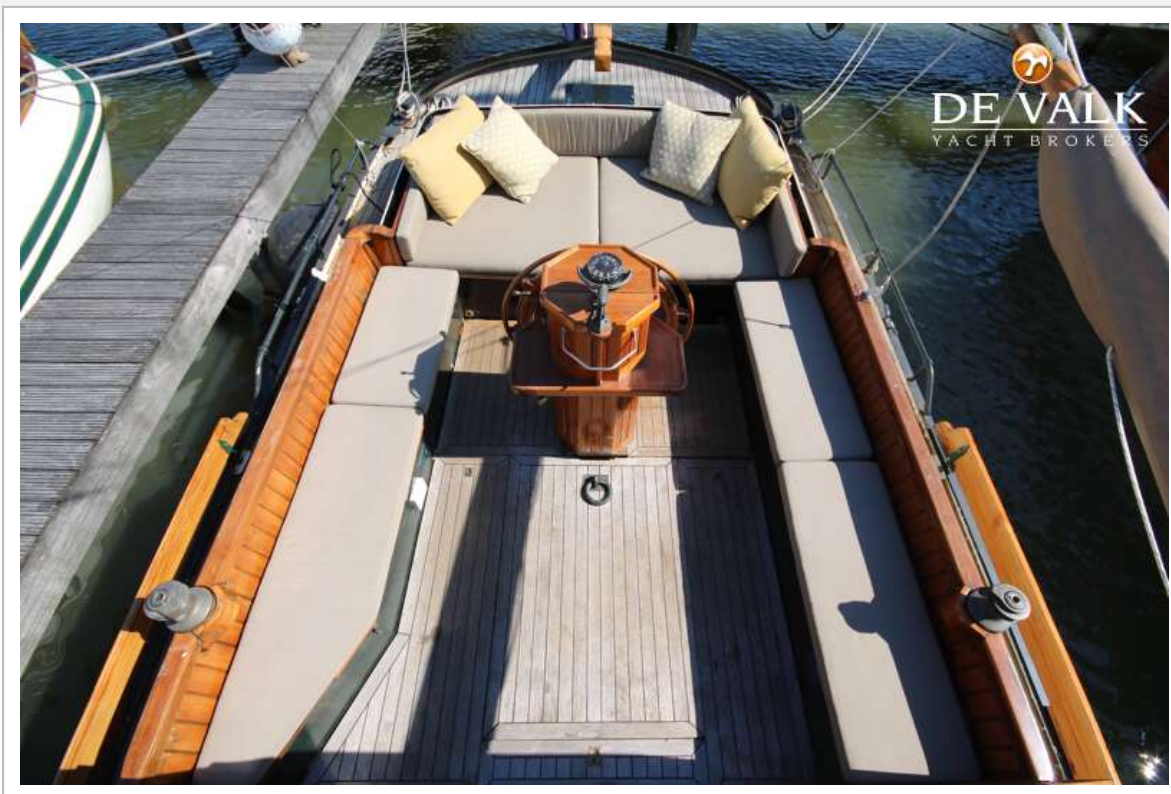


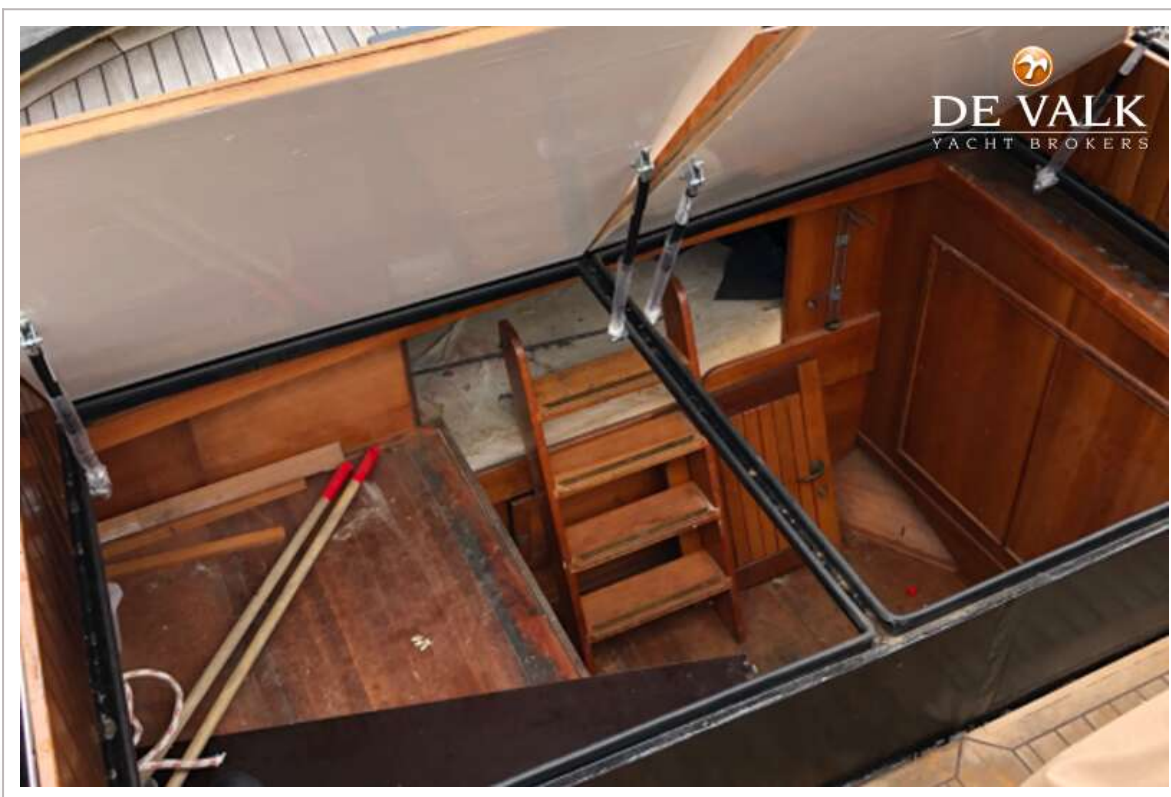
## PAVILJOENTJALK 14.50





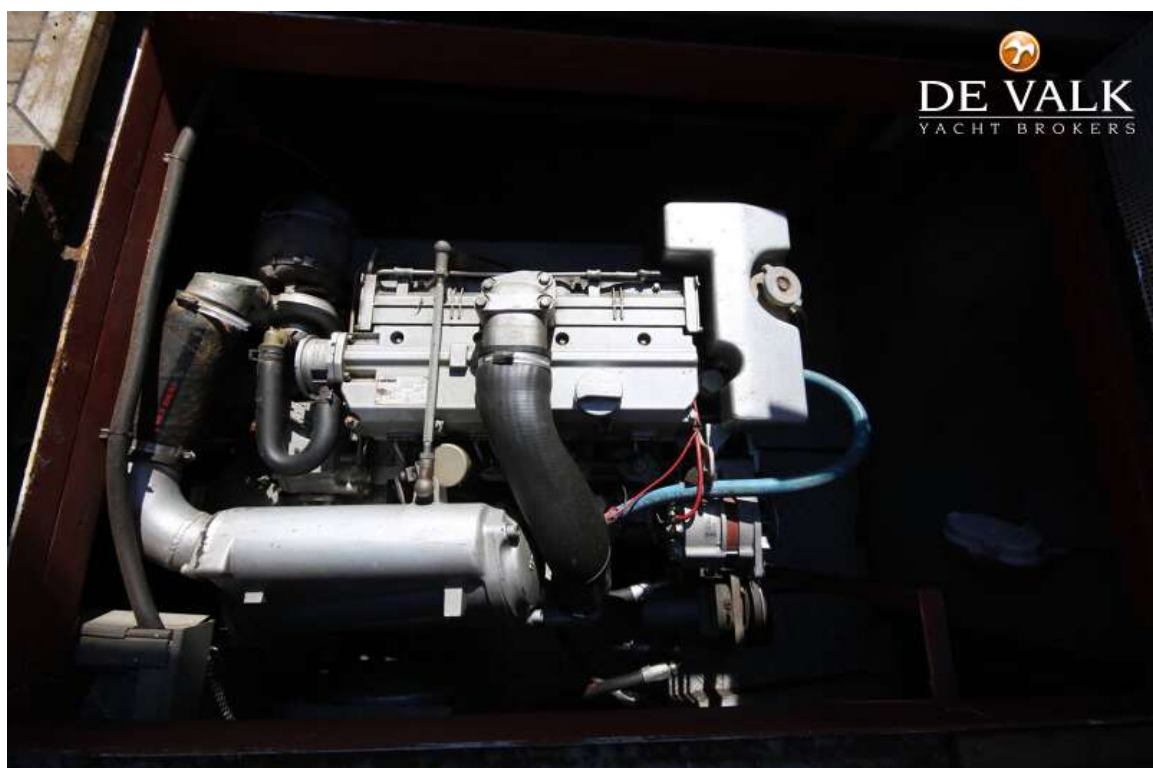
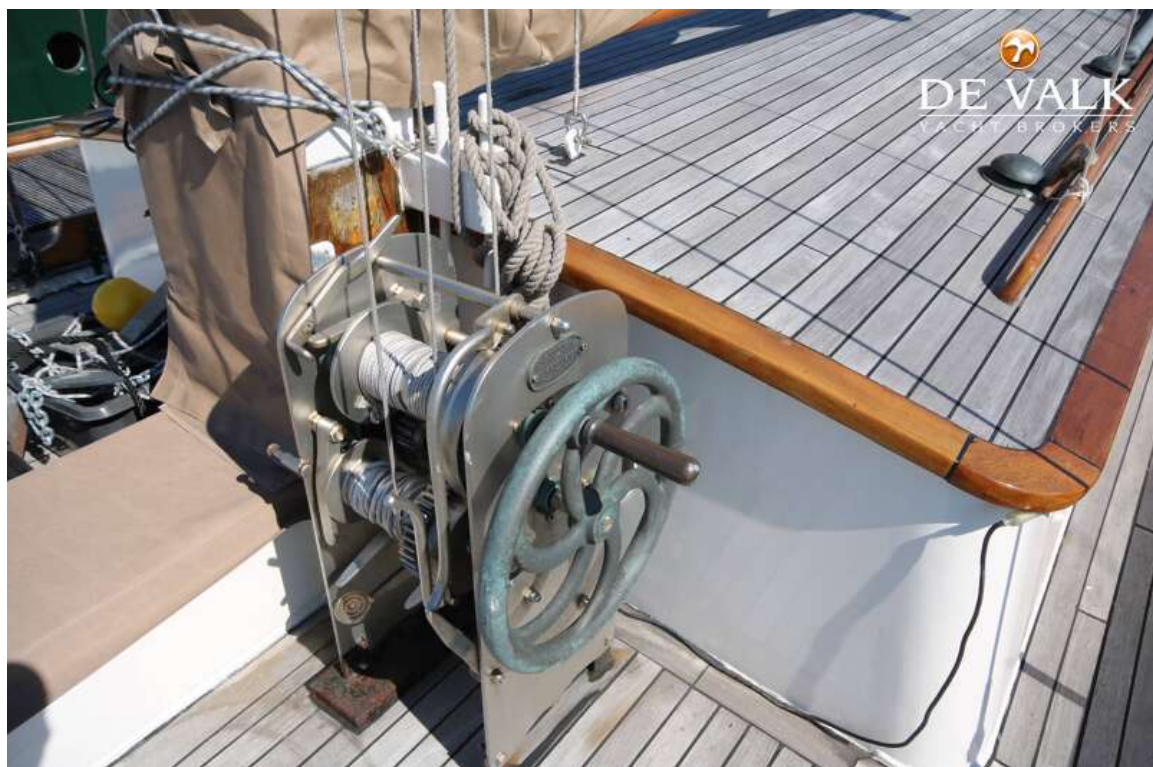
## PAVILJOENTJALK 14.50



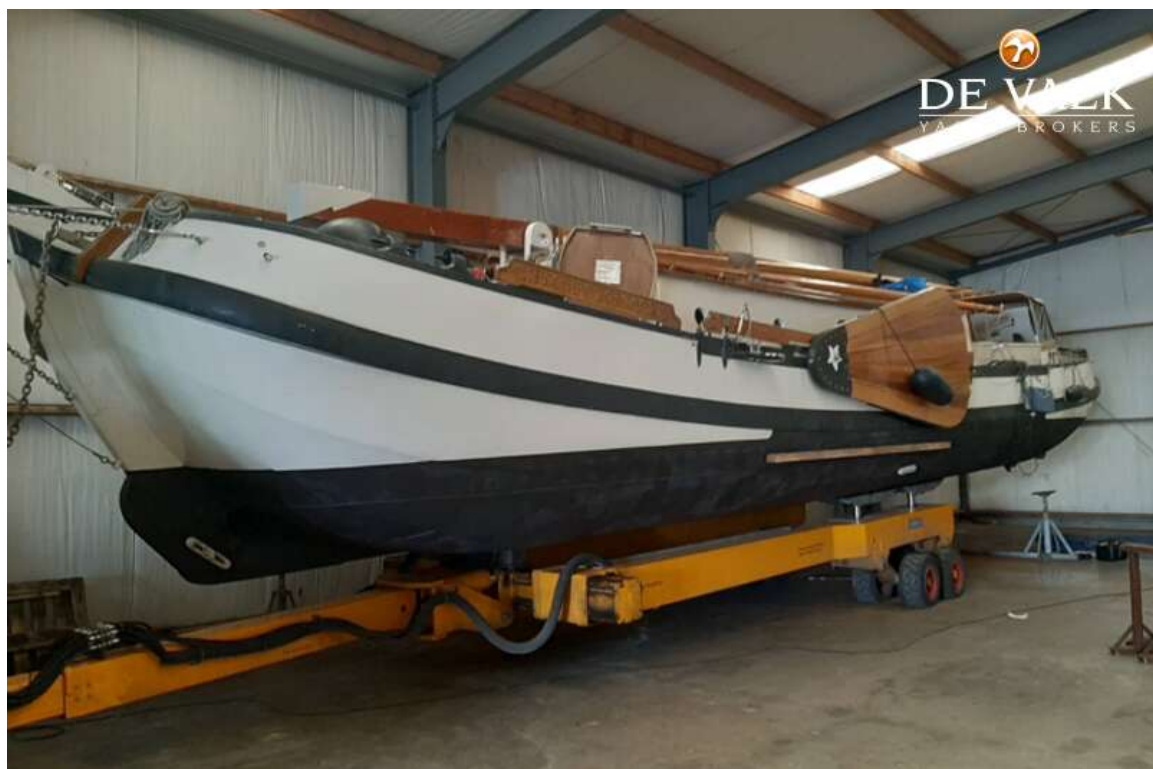


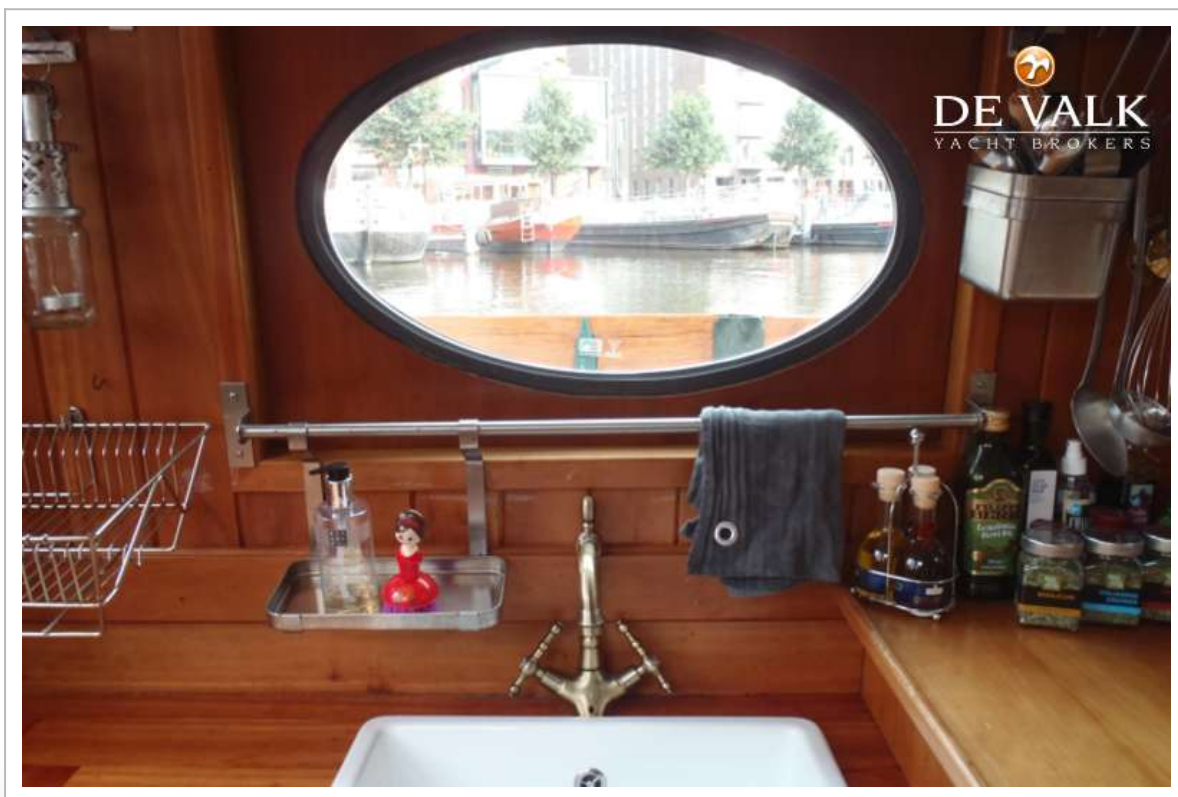






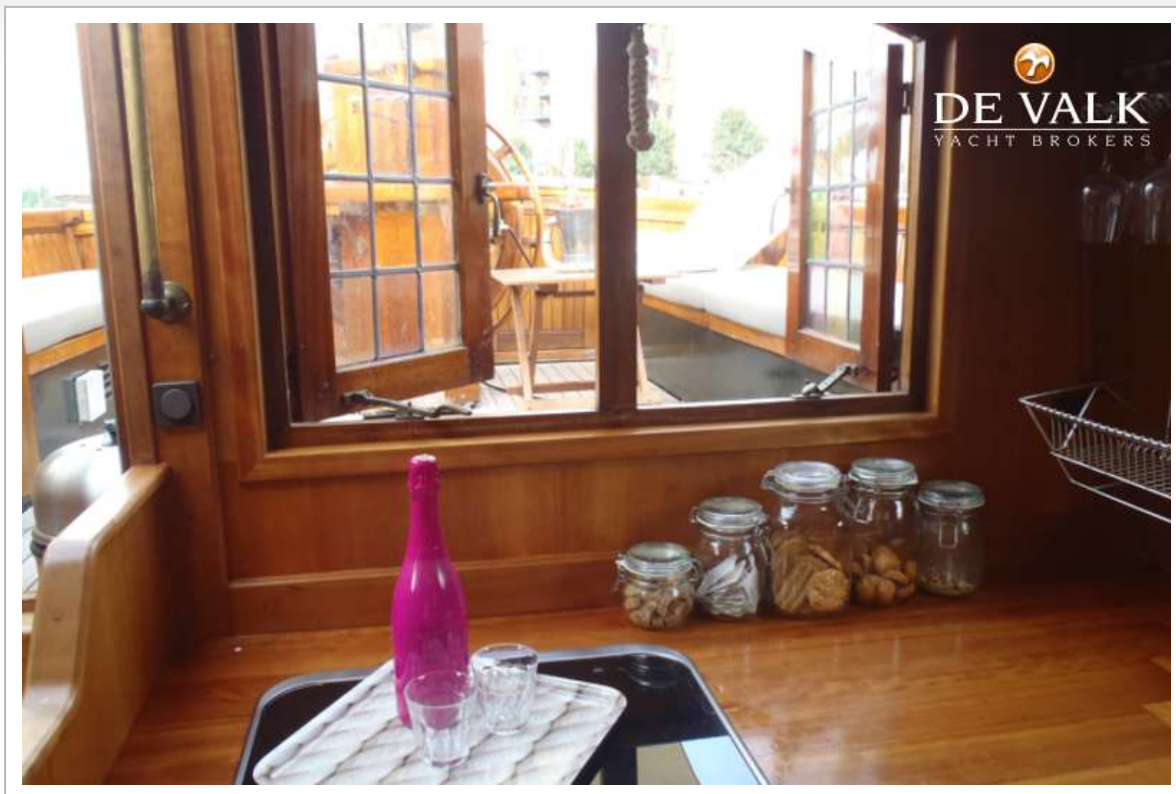














## PAVILJOENTJALK 14.50



