



DE VALK
YACHT BROKERS



SLOCUM 43 EXCLUSIVE



DE VALK
YACHT BROKERS

BROKERAGE | CHARTER | BERTHS | FINANCE | INSURANCE | YACHT MANAGEMENT

BROKER'S COMMENTS

Life doesn't always turn out as planned, so with a heavy heart the seller is saying goodbye to Johanna of which a surveyor said 'this quality - massive teak and hand laid solid GRP - is hardly built anymore'. The seller met Johanna in 2009 after it sailed from America to Europe. A true enthusiast gave her an extensive refit for usage in 'cold Europe'. In the years that followed no effort and expenses were spared to keep her in a TipTop condition a new engine, new electricity, new tanks and so on. The seller won't be able to sail in the coming years and this boat deserves an owner who can.

Henri van Eelen

SPECIFICATIONS

Dimensions	12.95 x 3.94 x 1.85 (m)	Builder	Cruising Yachts International Inc.
Built	1989	Cabins	2
Material	GRP	Berths	6
Engine(s)	1 x Yanmar 4JH5E diesel	Hp/Kw	54.00 (hp), 39.69 (kw)
Asking price	sold (VAT)	Lying	at sales office

CONTACT

Sales office	De Valk Hindeloopen B.V.	Telephone	+31 514 52 40 00
Address	Oosterstrand 1 8713 JS Hindeloopen NL	E-mail	hindeloopen@devalk.nl

DISCLAIMER

These particulars are given in good faith as supplied but cannot be guaranteed.



GENERAL

Model	SLOCUM 43 EXCLUSIVE
Type	sailing yacht
LOA (m)	12,95
LWL (m)	10,92
Beam (m)	3,94
Draft (m)	1,85
Air draft (m)	17,85
Headroom (m)	1,95
Year built	1989
Builder	Cruising Yachts International Inc.
Country	Taiwan
Designer	Stan Huntingford
Displacement (t)	12,7
Ballast (tonnes)	4
CE norm	NA
Hull material	GRP
Hull colour	white
Hull shape	S-bilged
Keel type	long keel
Superstructure material	GRP
Rubbing strake	wood
Deck material	GRP
Deck finish	teak
Superstructure deck finish	teak
Cockpit deck finish	teak
Antifouling (year)	2020
Dorades	4 X
Window frame	stainless steel
Window material	tempered glass
Deckhatch	4 X



Fuel tank (litre)	polyethylene 2 X 225L
Freshwater tank (litre)	stainless steel 2 X 450L
Blackwater tank (litre)	stainless steel 1 X 75L
Blackwater tank extraction	deck extraction + uw line
Greywater tank (litre)	GRP 1 X 75L
Wheel steering	mechanical
More info on hull	Preventive maintenance: In 2010 the hull under the waterline has been peeled for an anti osmosis treatment, including 5 new layers shell shield. New anti fouling applied 2020.
More info on paintwork	All the varnished exterior parts have been checked and are revarnished were needed. Capping rail and many other parts are left untreated for lesser maintenance and a much better appearance.
Extra info	Entire teak deck renovated in 2009. In 2020 the deck has been completely checked and renovated where necessary. Rubber sealant 2 front hatches renewed as well.
Extra info	Portholes are mounted in Stainless Steel housing and all have insect screen inserts.
Extra info	Teak skylight located above galley.

ACCOMMODATION

Cabins	2
Berths	6
Interior	Classic Burmese teak
Floor	teak
Saloon	many storage possibilities; hanging, shelves, drawers and cabinets
Headroom saloon (m)	1,95
Heating	central heating Webasto (2010)
Navigation center	yes
Chart table	yes
Aft Cabin	yes
Opening door to cockpit	yes



Galley	with ample storage space
Sink	stainless steel
Cooker	calor gas Techimplex XL3
Oven	+ Grill Bestron - 2016
Gas alarm	yes
Fridge	yes
Hot water system	220V + engine
Water pressure system	electrical Jabsco
Owners cabin	double bed
Bed length (m)	2,00 X 1,35
Wardrobe	drawers and shelves
Guest cabin 1	v-bed
Bed length (m)	1,96
Wardrobe	hanging/drawers/shelves
Extra info	pilot berth 2,00 X 0,92 at aft starboard side
Extra info	Neptune mattresses + slatted bottoms in owner's and guest cabin.
Extra info	Spacious marine head with wash bowl, toilet, shower and small bath tub.
Extra info	New boiler heating element 2020
Extra info	Central heating system by Design radiators - 1 in saloon and 1 in Bathroom and by 3 x kickspace. A number of 5 electric wind fans will keep the boat cool during warm summer nights.
Extra info	3 x Propane / Butane bottle - 6,5Kg in aft cockpit lockers.

MACHINERY

No of engines	1
Make	Yanmar
Type	4JH5E
HP	54
kW	39,69
Fuel	diesel



Year installed	2012
Maximum speed (kn)	7
Engine hours	836
Engine cooling system	freshwater heat exchanger
Drive	shaft
Engine controls	bowden cable
Gearbox	hydraulic ZF-FPS
Bowthruster	electric Vetus 95 kgf - new 2002
Propeller type	fixed
Propeller blades	3
Propeller shaft material	stainless steel
Shaft lubrication	water
Electric bilge pump	2 X
Start battery	1 x 12V - 750A Exide Maxxima
Service battery	4 x 12V 120Ah - 2013
Bowthruster battery	1 x 12V - 750A Exide Maxxima
Windlass battery	combined with bowthruster battery
Battery charger	Victron Energy 12V - 1600V / 70A
Shorepower	with cable
Extra info	Full engine tune-up - oil, filters, belts, new fuel injection pump, air-valve, injector check, etc. - in March 2020.

NAVIGATION

Compass	Aqua Meter
Depth sounder	Raymarine ST60+ Depth Instrument
Log	Raymarine ST60+ Speed Instruments
Windset	Raymarine ST60+ Wind & Close Hauled instruments
Repeater	Raymarine 60+ Graphic Display and Raymarine RN-3000 inside
VHF	ICOM IC-M505 with Icom HM-162 E antenna in mast + handheld mic for cockpit. Second VHF Navman 7200 EU M505 with own antenna at rear arch.
Autopilot	Raymarine ST6002 - Smartpilot Controller (ST7002)



Radar	Quantum CHIRP (2019)
Radar/GPS/plotter	Raymarine Axiom 9-Inch Touch Screen (2019)
Navtex	NASA Clipper 147
AIS transponder	2017 - Raymarine 650 Class B + AIS 100 Active splitter

EQUIPMENT

Cockpit cover	multifunctional
Bimini	2 X
Boarding ladder	stainless steel
Anchor	Bruce
Anchor chain	50 M
Anchor 2	CQR Plough
Windlass	electrical Maxwell Marine VW-3000
Sea railing	stainless steel 2013 - custom made tube
Grab rail (superstructure)	teak
Railing side opening gates	2 X
Pushpit	yes
Pulpit	yes
Life raft	container Seago - L1104154R
Last life raft survey	Purchased Feb. 2018 - survey expires Feb. 2021
Radar reflector	Firdell Blipper
Fenders	with Green fender socks 6 X
TV	Toshiba LCD
Radio	Sony - with MP3 and USB connection
Cockpit speakers	2 X
Speakers in salon	2 X
Clock - barometer	1 pair in the cockpit and a second pair in the saloon
Extra info	Because of her characteristic appearance, seaworthiness and comfort, Johanna is a great joy to sail, to stay on board for a longer period or even as a liveaboard. Many thumbs-up in every port assured.



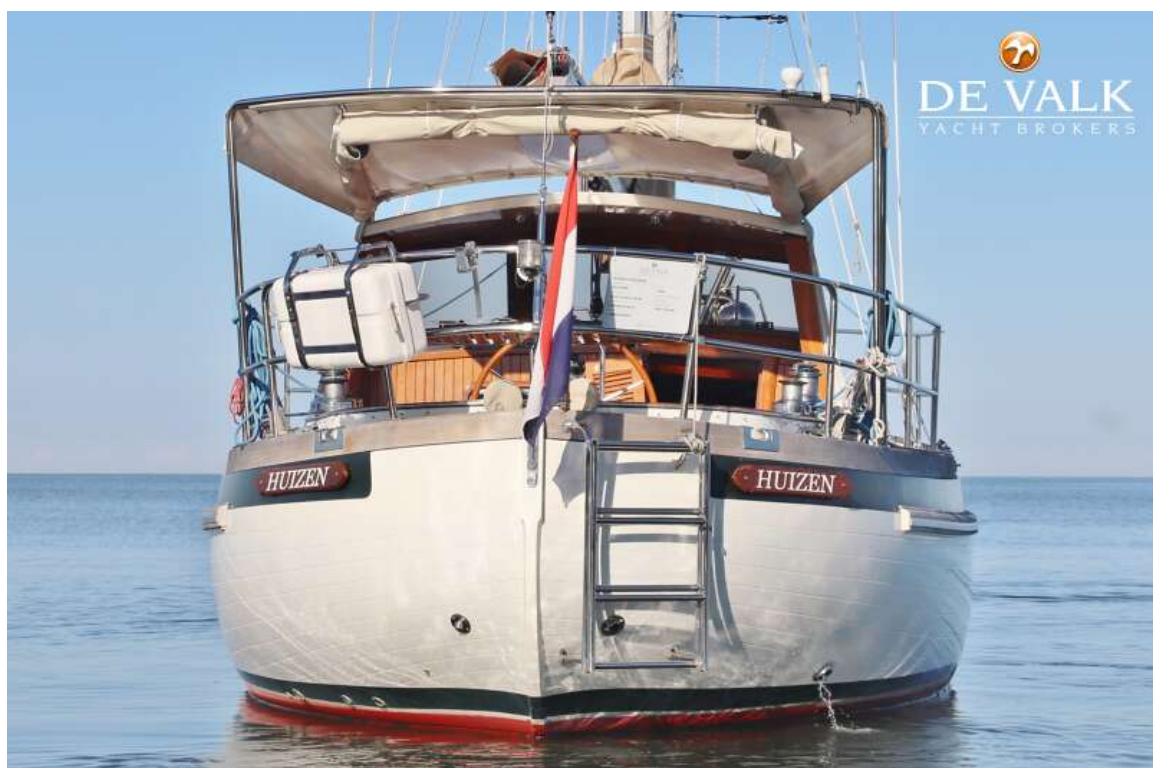
RIGGING

Rigging	sloop-cutter
Standing rigging	wire
Brand mast	Isomat
Material mast	aluminium
Spreaders	2 X
Mainsail	Beilken 30m2 - 2004
Mainsail cover	including maindrop system - new in 2020
High aspect	24,5m2
Genoa I	De Vries Sails - 46m2 - 2018
Genoa II	Halfwinder - Beilken - 58m2 - 2004
Genoa staysail	- self tacking on Cutter stay - washed and checked 2018 16,5m2
Trysail	6,5m2
Backstay adjuster	mechanical
Boomvang	tackle
Primary sheet winch	2 x 22 Barient selftailing winches
Genoa sheetwinches	2 x 42 Lewmar selftailing winches.
Multifunctional winches	2 x 32 Barient non selftailing winches
Spi-pole	aluminium
Extra info	Batten pockets mainsail remodeled + improved joining with battcars. Mainsail washed and checked 2018.





SLOCUM 43 EXCLUSIVE





SLOCUM 43 EXCLUSIVE

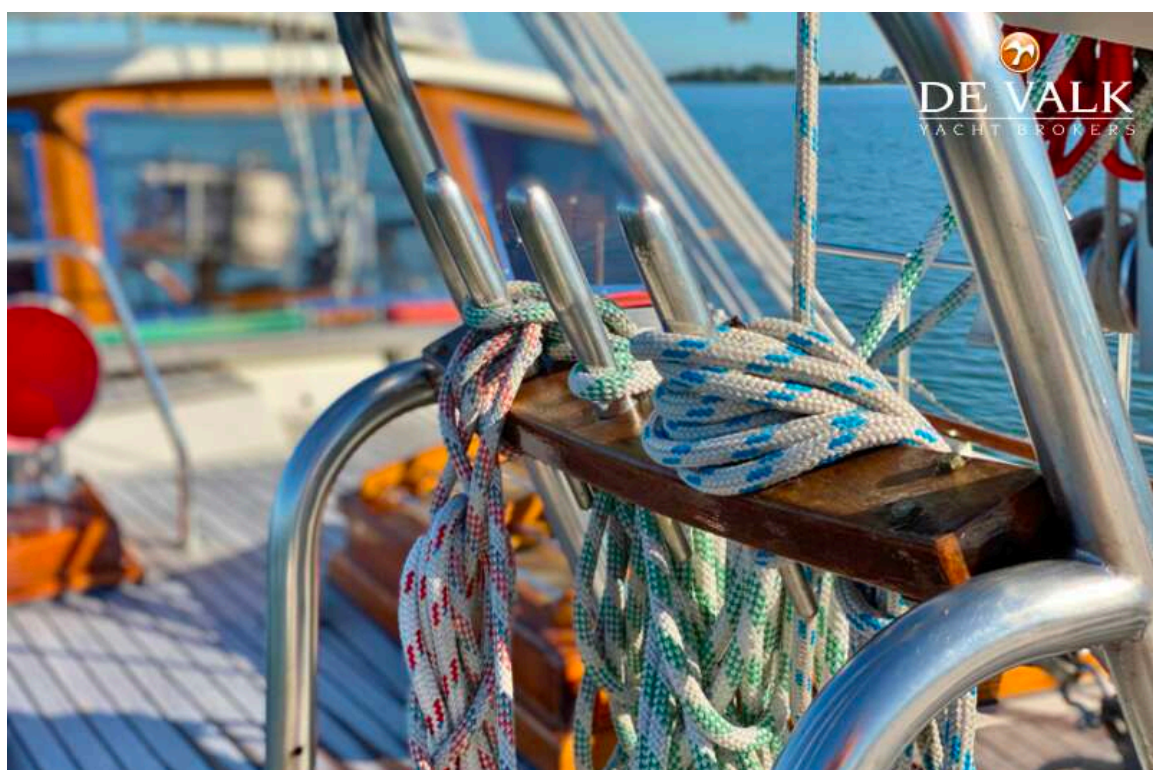




SLOCUM 43 EXCLUSIVE



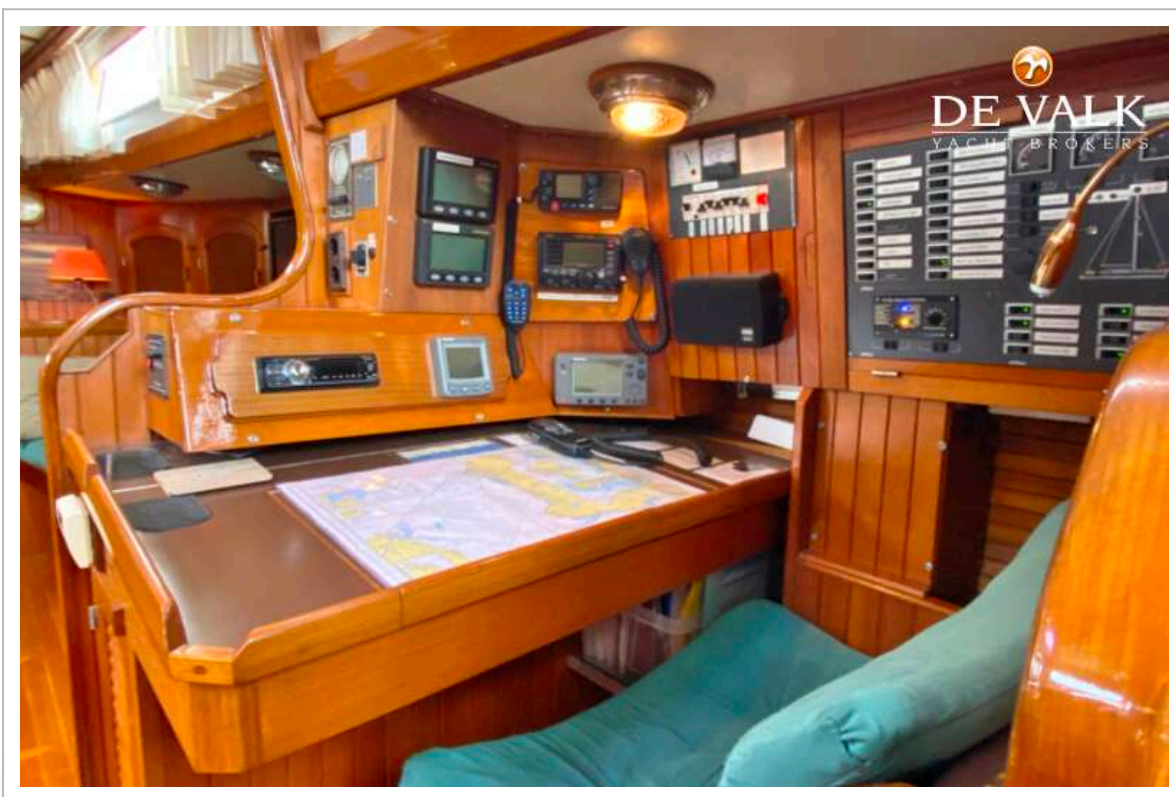








SLOCUM 43 EXCLUSIVE

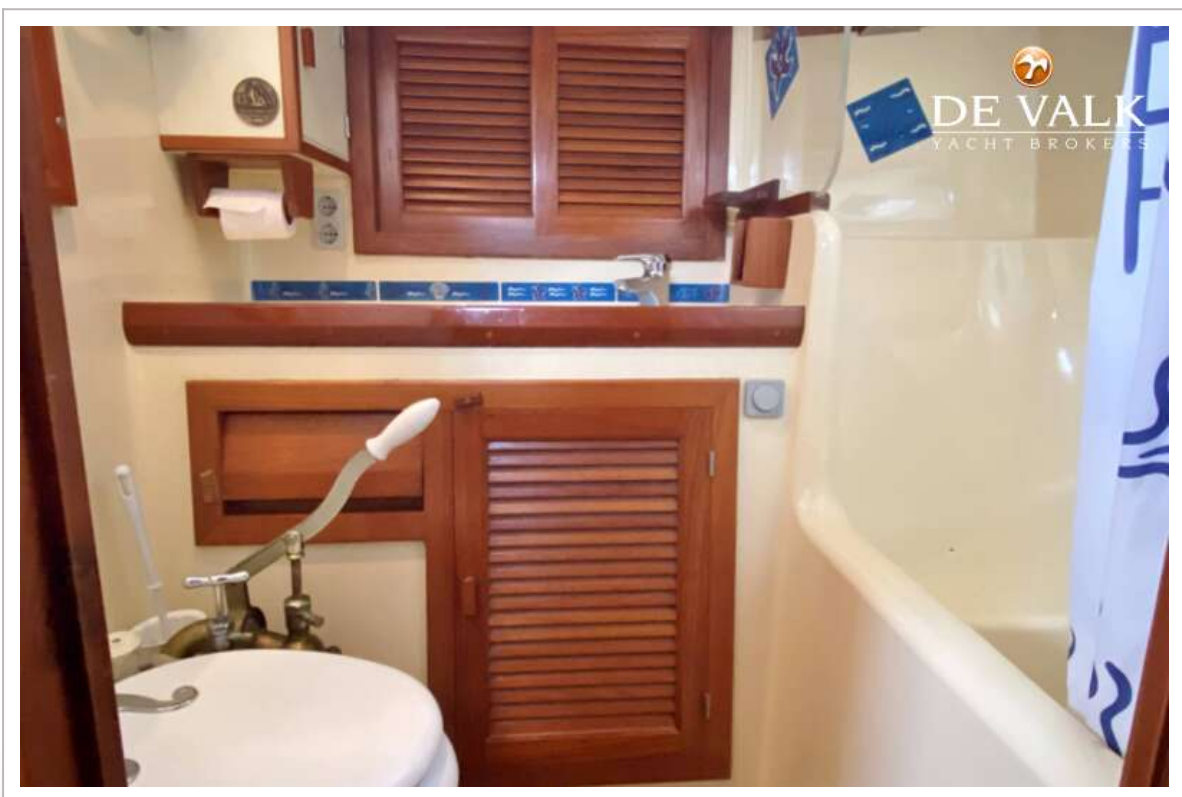




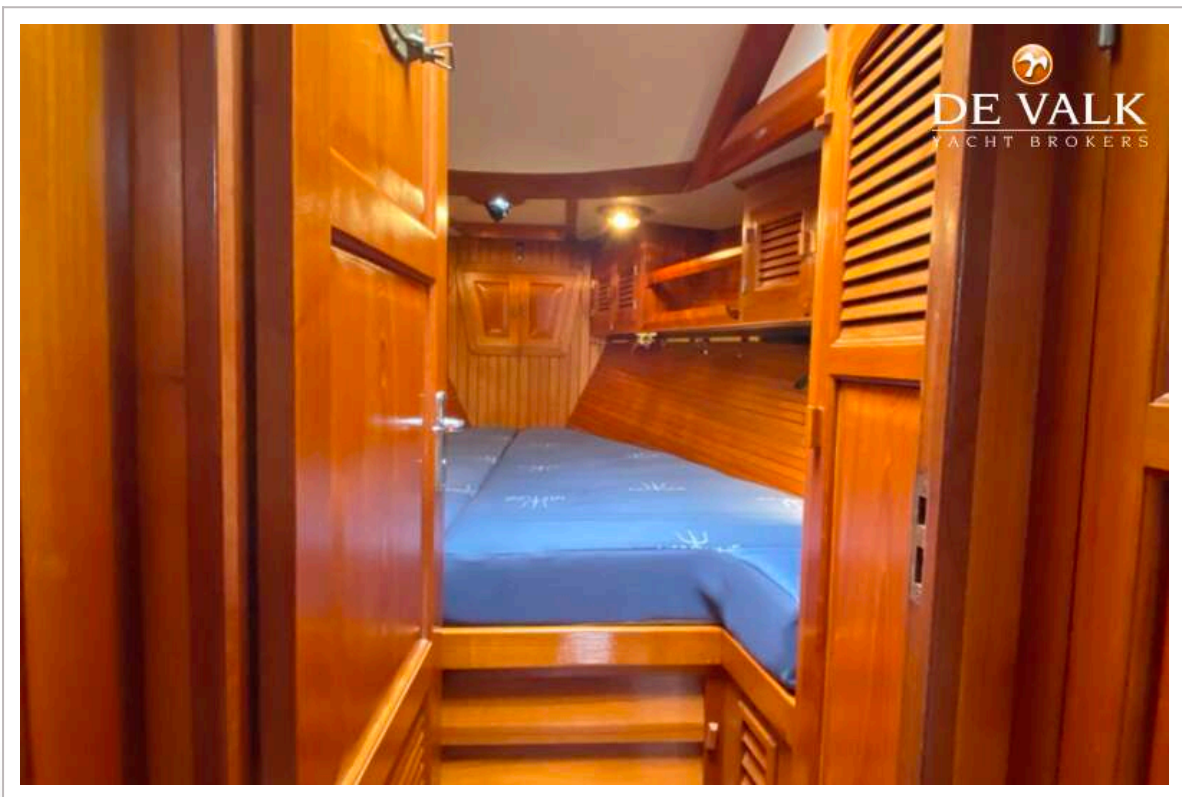
SLOCUM 43 EXCLUSIVE







SLOCUM 43 EXCLUSIVE



SLOCUM 43 EXCLUSIVE

