



RUBIN 35 MS

RUBIN 35 MS

BROKER'S COMMENTS

The Rubin 35 is a well and sturdy, German built pilothouse ketch. Inside steering from the pilothouse saloon will lengthen your sailing season or during bad weather passages. The outside helm position is the place to be at lovely days. The well designed interior offers a "room with a view", well proportioned cabins - she sleeps up to 5 people - well proportioned and equipped galley and lots off stowage place. Well equipped, amongst others a bowthruster, recent navigation electronics and a powerful Perkins engine. Ready for inspection in our sales marina in Katwoude.

Harald Padberg

SPECIFICATIONS

Dimensions	10.50 x 3.30 x 1.35 (m)	Builder	Deerberg, Germany
Built	1980	Cabins	2
Material	GRP	Berths	5
Engine(s)	1 x Perkins 4,236 diesel	Hp/Kw	65.00 (hp), 47.78 (kw)
Asking price	sold (VAT)	Lying	at sales office

CONTACT

Sales office	De Valk Monnickendam B.V.	Telephone	+31 (0)299 65 63 50
Address	Hoogedijk 6 1145 PM Katwoude NL	E-mail	monnickendam@devalk.nl

DISCLAIMER

These particulars are given in good faith as supplied but cannot be guaranteed.



GENERAL

Model	RUBIN 35 MS
Type	sailing yacht
LOA (m)	10,50
LWL (m)	9,15
Beam (m)	3,30
Draft (m)	1,35
Air draft (m)	12,40
Headroom (m)	1,90
Year built	1980
Builder	Deerberg, Germany
Country	Germany
Displacement (t)	8
Ballast (tonnes)	Ca. 3,5
CE norm	NA
Hull material	GRP
Hull colour	white
Hull shape	S-bilged
Keel type	long keel
Rubbing strake	Teak
Deck material	GRP
Deck finish	non-skid moulded in
Antifouling (year)	2019 self polishing
Window frame	aluminium
Window material	glass
Deckhatch	2 X
Portholes	aluminium 8 X
Fuel tank (litre)	steel 500
Level indicator (fuel tank)	yes
Freshwater tank (litre)	steel 500
Level indicator (freshwater)	yes



Blackwater tank (litre)	polyethylene 100
Level indicator (blackwater)	yes
Blackwater tank extraction	deck extraction + uw line
Inside helm position	hydraulic
Outside helm position	hydraulic
Emergency tiller	yes
More info on paintwork	Hull above the waterline painted in 2018
Extra info	<p>The deckhouse has an entrance on both sides, which is easily accessible via the sea railing with lockable openings. In the deckhouse is a steering position with all necessary navigation equipment. At the rear of the deckhouse an L-shaped sofa with a removable dining table. The large windows in the deck house give you a good view outside and the two sliding doors and two openable windows provide good ventilation. In addition, the deckhouse offers lots of storage space and there is headroom everywhere. Via the steps you enter the forward cabin. Here there is a galley with stainless steel sink, hot and cold running water, a two-burner gas stove, a built-in oven and a top-loading refrigerator of approx. 70 liters. There is sufficient cupboard space for all kitchen utensils and there is a cupboard with a layout for the proper storage of crockery. Opposite the galley is a large round seat with a swiveling coffee table. This table can also be lowered, so that you can make a bed of 215x145 cm with the back cushions. There is storage space under the seat cushion. The cabin has four portholes that can be opened and the Trumatic heater has openings in all rooms. In the front cabin is a bed with the largest length 203 cm. and there are two closets and storage space above the bed. Here too there are two portholes and an escape hatch. On the other side of the deckhouse, a small staircase leads to the aft cabin. Here is a bed measuring 183 x 85 cm. Here is also the spacious wet room with toilet, sink with hot and cold water and the shower. In the bathroom is an porthole which can be openend and a permanent running fan on solar power.</p>

ACCOMMODATION

Cabins	2
Berths	5



Interior	teak
Pilot house/deck saloon	yes
Headroom saloon (m)	approx. 1,90
Heating	calorgas ducted hot air Trumatic
Aft Cabin	yes
Dinette to convert into berth	2,15 X 1,45 M
Sliding door to cockpit	2 X
Galley	yes
Countertop	tiles
Sink	stainless steel
Cooker	calor gas 2017 - Dometic P18062M
Oven	2017 - Dometic OG2000
Gas alarm	Trigas detector at the galley, smoke detectors in front and aft cabin
Fridge	2011 - Isotherm Compact Classic 50W - ca. 70 Ltr.
Hot water system	220V + engine Boiler
Water pressure system	electrical
Owners cabin	double bed
Bed length (m)	1,83
Wardrobe	shelves
Bathroom	en suite
Toilet	en suite
Toilet system	vacuum
Wash basin	in the bathroom
Shower	en suite
Guest cabin 1	v-bed
Bed length (m)	2,03
Wardrobe	hanging and shelves
Extra info	heating system with air openings in each cabin
Extra info	outside gas locker for 2 large bottles. Both bottles have separate electronic valves



MACHINERY

No of engines	1
Make	Perkins
Type	4,236
HP	65
kW	47,78
Fuel	diesel
Year installed	1980
Engine hours	3171
Engine cooling system	freshwater heat exchanger
Drive	shaft
Engine controls	bowden cable
Bowthruster	electric 2018 - Vetus 60 kfg
Propeller blades	3
Propeller shaft material	stainless steel
Shaft lubrication	water
Manual bilge pump	yes
Electric bilge pump	automatic
Start battery	1 X 225Ah LMFM 72511
Service battery	1 X 200Ah Rebelcell
Battery monitor	BEP-DC DCSM
Battery charger	2017 - Whisper Power WP-BC Supreme 12V/40A
Inverter	Phoenix 12V/180W
Solar panel	6 X Sunware
Shorepower	with cable
Insulation transformer	Argo Fet
Extra info	Major engine service / tune-up done before start season

NAVIGATION

Compass	In- and outside
Electric compass	Evolution EV-1 connected with NMEA2000 network



Depth sounder	Airmar - integrated in NMEA200 network
Log	VDO Logic - integrated in NMEA200 network
Windset	Triton wind pack - integrated in NMEA2000 network
VHF	Garmin VHF200i - with NMEA2000 interface
Autopilot	Evolution EV-1 with ACU200 and Raymarine P70 in- and outside control
GPS	Garmin GPS map 922 with NMEA2000 interface
Navtex	Nasa Easy Navtex
AIS receiver	Garmin AIS 600 with NMEA2000 interface
AIS transponder	Garmin AIS 600 with NMEA2000 interface
Navigation lights	Anchor light in top of foremast. Deck lighting in front mast. All navigation lights equipped with (approved) LED lamps.
Extra info	Depth / speed / wind info can be read on the Garmin GMI-20 multifunction display in the deckhouse and on a B&G Triton-2 multifunction display at the outside helm position.
Extra info	All navigation equipment is connected via NMEA2000 cabling / protocol. In addition, it is possible to connect to a map / navigation program on a laptop / PC via USB via a NMEA2000 / NMEA183 interface.

EQUIPMENT

Boarding ladder	aluminum
Anchor	Danforth
Anchor chain	35 M
Windlass	electrical
Dinghy	inflatable Talamex - 2,40 M
Sea railing	teak
Railing side opening gates	2 X
Pushpit	yes
Pulpit	yes
Lifebuoy	yes
Horn	
Radar reflector	in Mizzen mast



Fenders	yes
Mooring lines	yes
TV	Avtex LCD
Radio	Marquant MCR-720
Speakers in salon	2 X
Clock - barometer	yes
Fire extinguisher	1 x galley - 1 x pilothouse - 1 x aft cabin
Extra info	Bow thruster can be operated from the deckhouse or via Lofrans remote control

RIGGING

Rigging	ketch
Standing rigging	wire
Material mast	aluminium
Spreaders	1 at each mast
Mainsail	2010 - ca. 21m2 - brown - Dacron
Mainsail cover	yes
Mizzen	2010 - ca. 10.2m2 - Brown - Dacron
Mizzen sailcover	yes
Genoa	2012 - ca. 21m2 - Brown - Dacron
Genoa furler	Harken
Genoa cover	yes
Reefing System	slabreefing
Boomvang	tackle
Primary sheet winch	Meisner 16
Genoa sheetwinches	2 X Andersen 40ST FST 2-speed selftailing
Gennaker pole	aluminium
Extra info	All sails are in good condition. Original set of sails is included as a spare set.



RUBIN 35 MS



RUBIN 35 MS



RUBIN 35 MS



RUBIN 35 MS



RUBIN 35 MS



RUBIN 35 MS



RUBIN 35 MS



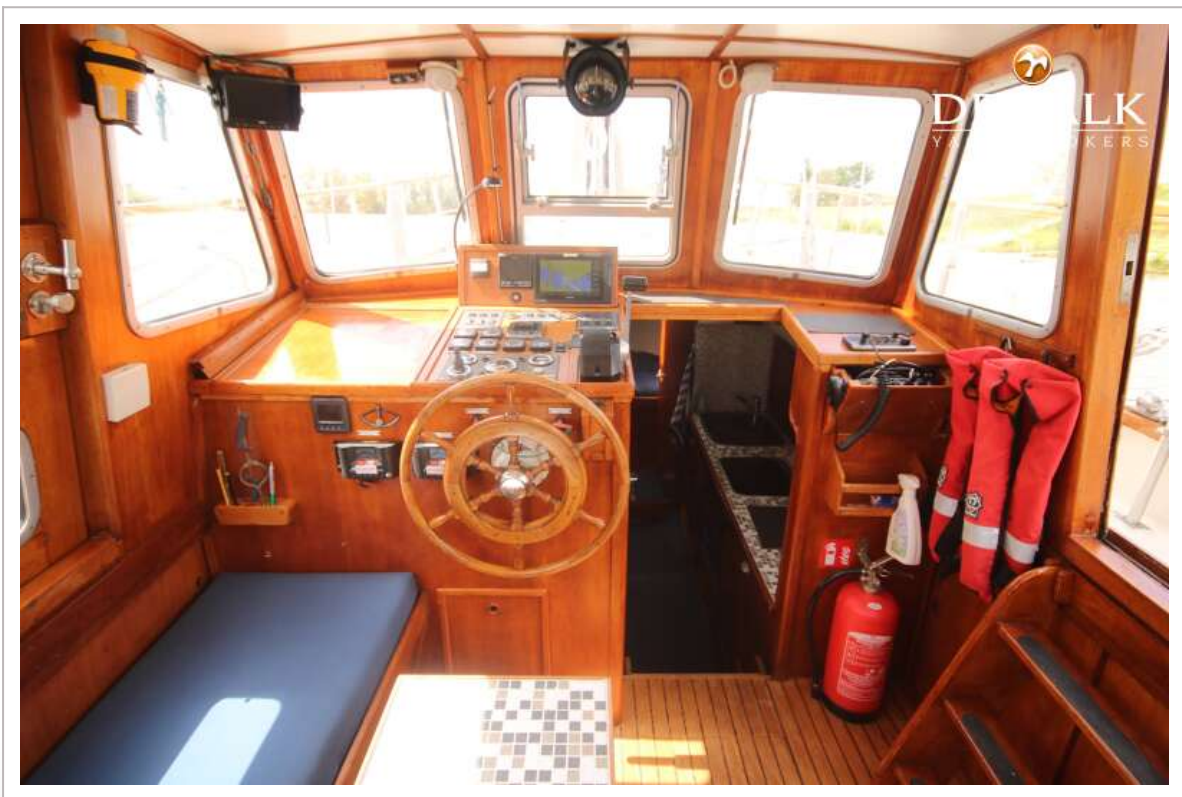
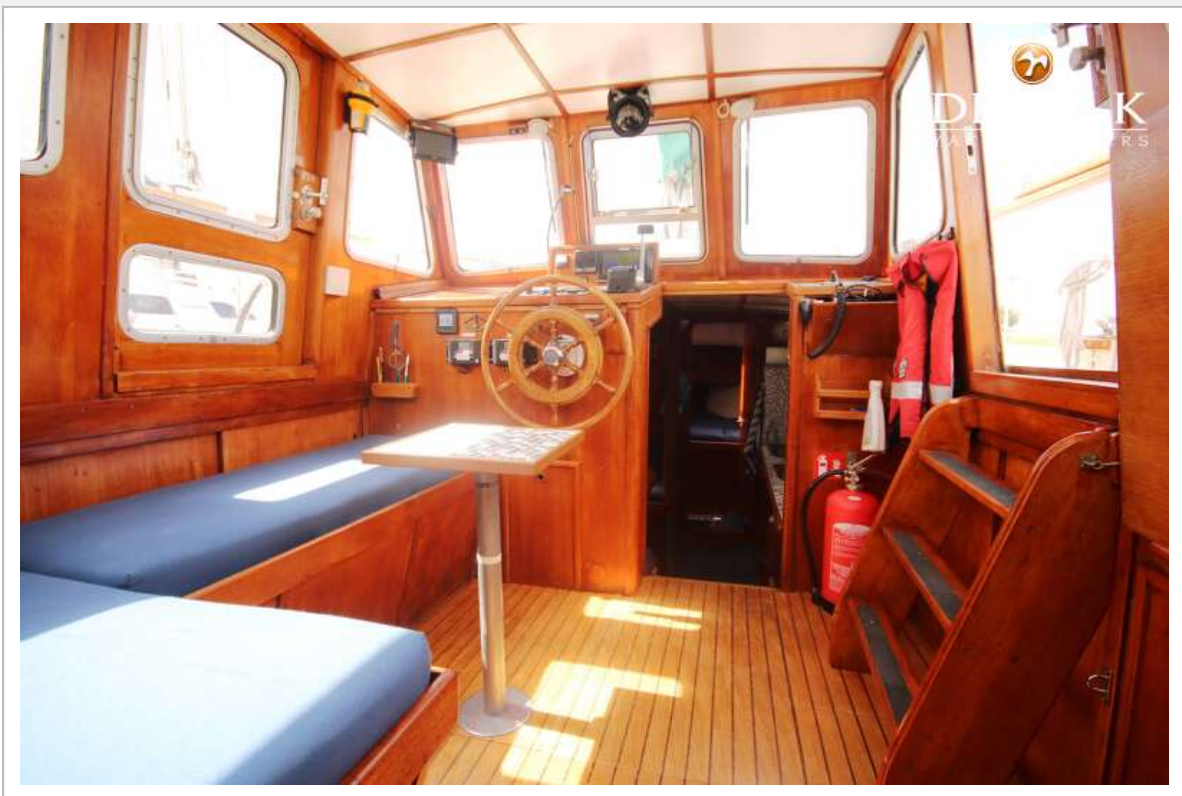
RUBIN 35 MS



RUBIN 35 MS



RUBIN 35 MS



RUBIN 35 MS



RUBIN 35 MS



RUBIN 35 MS



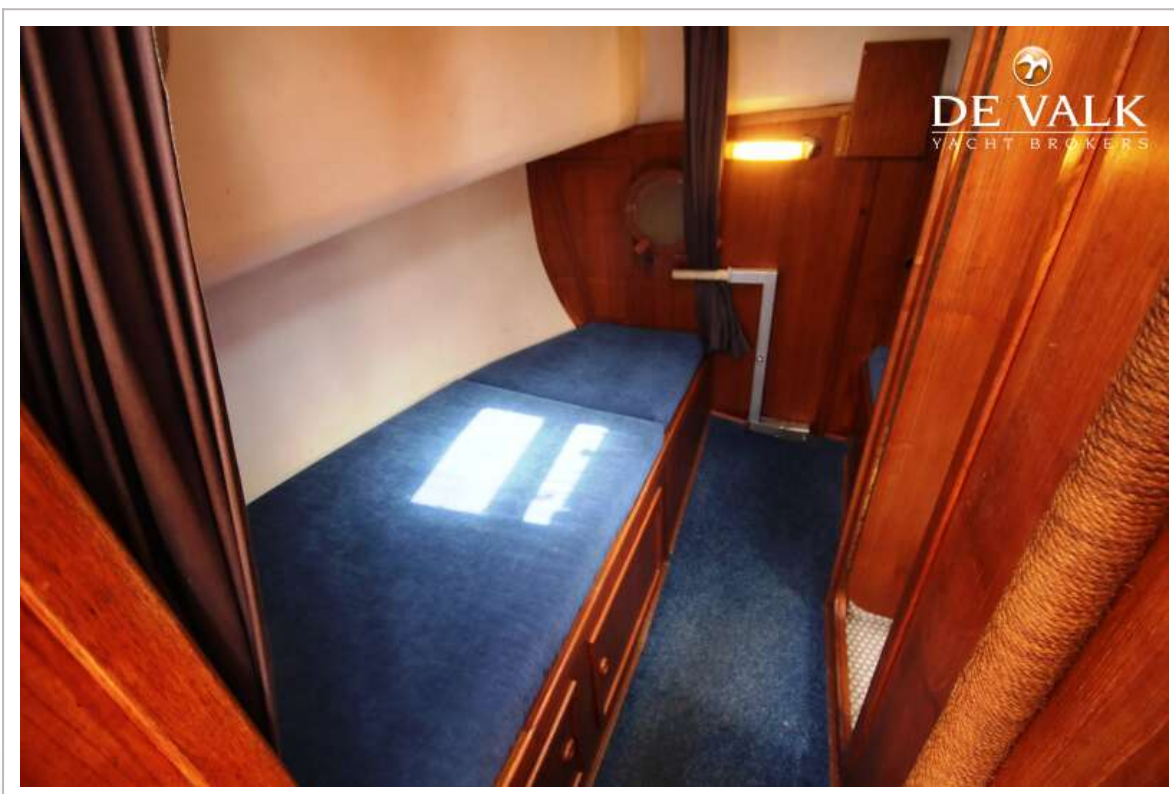
RUBIN 35 MS



RUBIN 35 MS



RUBIN 35 MS



RUBIN 35 MS



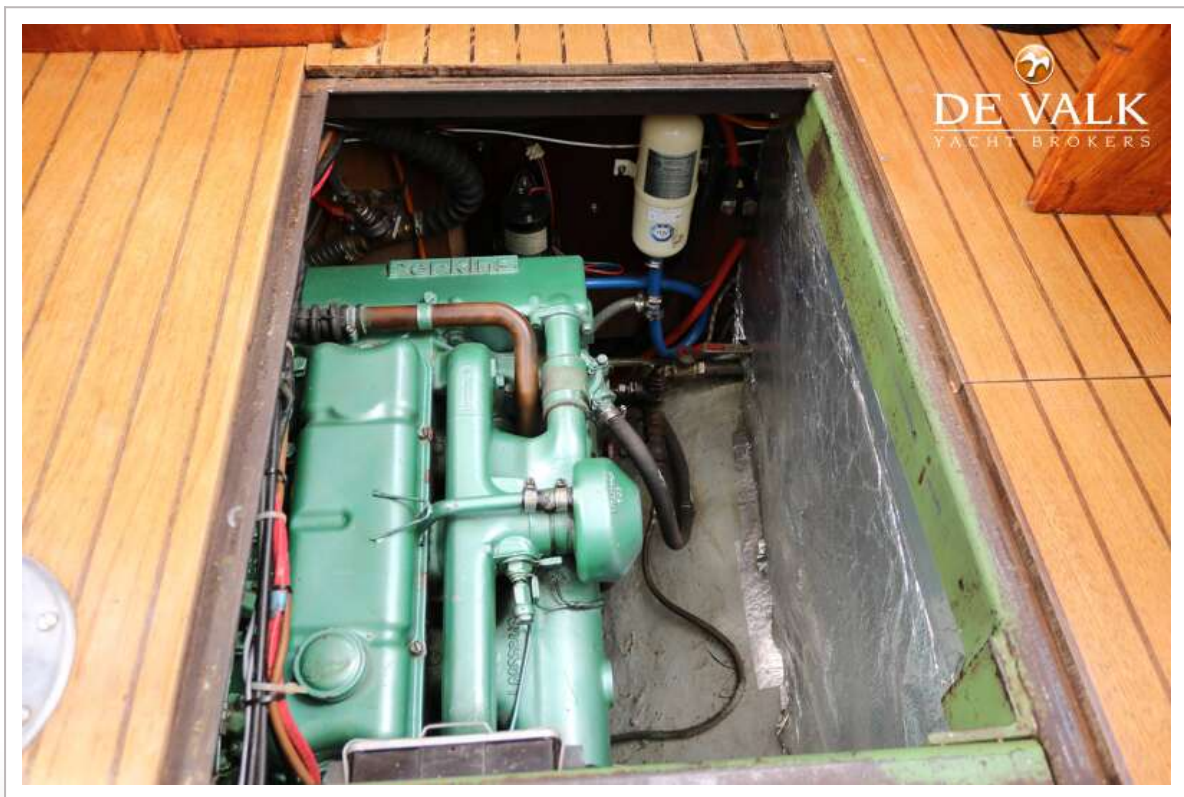
RUBIN 35 MS



RUBIN 35 MS



RUBIN 35 MS



RUBIN 35 MS

