



DE VALK
YACHT BROKERS



DANISH ROSE 37



DE VALK
YACHT BROKERS

DANISH ROSE 37

BROKER'S COMMENTS

This charming Danish Rose 37, designed by Martin Bekebrede, with centreboard makes it ideal for sailing along the coast and the Wadden Islands. This Danish Rose 37 is always well maintained and is a comfortable and strongly built yacht, which with her centreboard is extremely suitable for both inland and outdoor waters and therefor can easily be beached. She can be visited by appointment and is ready for departure with the new owner!

Henri van Eelen

SPECIFICATIONS

Dimensions	11.20 x 3.55 x 1,20 / 2.40 (m)	Builder	Wilstra Bolsward
Built	1996	Cabins	2
Material	Steel	Berths	5
Engine(s)	1 x Yanmar diesel	Hp/Kw	50.00 (hp), 36.75 (kw)
Asking price	sold (VAT)	Lying	contact Hindeloopen

CONTACT

Sales office	De Valk Hindeloopen B.V.	Telephone	+31 514 52 40 00
Address	Oosterstrand 1 8713 JS Hindeloopen NL	E-mail	hindeloopen@devalk.nl

DISCLAIMER

These particulars are given in good faith as supplied but cannot be guaranteed.



GENERAL

Model	DANISH ROSE 37 maa
Type	sailing yacht
LOA (m)	11,20
Beam (m)	3,55
Draft (m)	2,40
Draft min (m)	1,20
Headroom (m)	1,90
Year built	1996
Builder	Wilstra Bolsward
Country	The Netherlands
Designer	Bekebrede
Displacement (t)	12
Ballast (tonnes)	2,5
CE norm	NA
Hull material	steel
Hull colour	Grijs/ Blauw
Hull thickness (mm)	6mm
Hull shape	S-bilged
Keel type	lifting keel
Superstructure material	yes
Superstructure (mm)	5mm
Deck plate thickness (mm)	4mm
Rubbing strake	steel
Deck material	steel
Deck finish	non-skid moulded in Vuurgedroogd zand
Window frame	brass
Window material	tempered glass
Portholes	brass
Insulation	foam plates
Fuel tank (litre)	stainless steel 150L



Freshwater tank (litre)	2x 250L
Blackwater tank (litre)	stainless steel 150L
Blackwater tank extraction	deck extraction + pump
Wheel steering	hydraulic
Emergency tiller	yes
Extra info	Onderwaterschip antifouling op epoxy
Extra info	Verfsysteem supragloss op epoxy

ACCOMMODATION

Cabins	2
Berths	5
Interior	cherry Esdoorn/ kers
Floor	Esdoorn/ kers
Open cockpit	yes
Saloon	yes
Headroom saloon (m)	1,90m
Chart table	yes
Galley	yes
Countertop	plastic
Sink	stainless steel
Cooker	calor gas
Oven	yes
Fridge	+vriesvak en extra koelbox
Hot water system	220V + engine
Water pressure system	electrical
Owners cabin	v-bed
Bed length (m)	2,00m
Wardrobe	hanging and shelves
Bathroom	shared
Toilet	shared
Toilet system	electric



Wash basin	at the toilet
Shower	shared
Guest cabin 1	double bed + single bed
Bed length (m)	2,00m
Wardrobe	hanging

MACHINERY

No of engines	1
Make	Yanmar
HP	50
kW	36,75
Fuel	diesel
Year installed	1996
Engine hours	2732
Engine cooling system	closed keelcooling
Drive	shaft
Propeller type	fixed
Propeller blades	3x
Propeller shaft material	stainless steel
Shaft lubrication	grease
Electric bilge pump	2x
Batteries	2x 100 Ah
Battery charger	Mastervolt
Shorepower	with cable

NAVIGATION

Compass	Plastimo
Electric compass	yes
Depth sounder	VDO Logic
Log	VDO Logic
Windset	VDO Logic



Repeater	VDO Logic
VHF	Shipmate RS8300
Autopilot	yes
Rudder angle indicator	VDO Logic
GPS	yes
Plotter	Raymarine
Navtex	Nasa Marine

EQUIPMENT

Sprayhood	yes
Boarding ladder	stainless steel
Anchor	yes
Anchor chain	yes
Windlass	manual
Sea railing	wire
Railing side opening gates	yes
Pushpit	yes
Pulpit	yes
Fenders	yes
Mooring lines	yes
Radio-cd player	yes
Clock - barometer	yes
Fire extinguisher	yes

RIGGING

Rigging	cutter
Standing rigging	wire
Brand mast	Sparcraft
Material mast	aluminium
Mainsail	De Vries Lemmer 30m2
Mainsail cover	De Vries Lemmer



Jib	Kluiver van Wittevrongel 36m2 rolfok
Jib I	De Vries Lemmer 16m2 (kotter getuigd)
Gennaker	De Vries Lemmer 90m2
Reefing System	slabreefing 2x smeerreep
Backstay adjuster	tackle
Primary sheet winch	2x Andersen selftailing
Genoa sheetwinches	2x Andersen selftailing
Halyard winches	1x Andersen
Reefing winch	1x Andersen selftailing
Spi-pole	aluminium Selden 3- 6m



DANISH ROSE 37



DANISH ROSE 37



DANISH ROSE 37



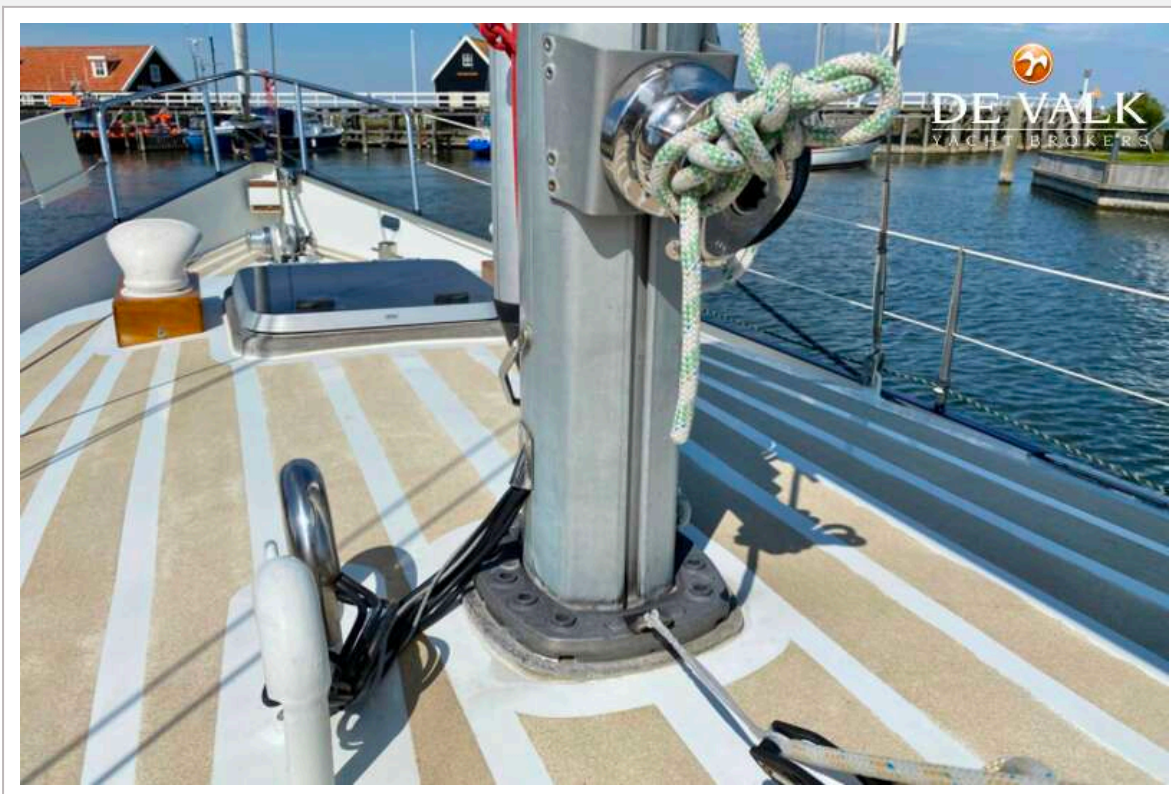
DANISH ROSE 37

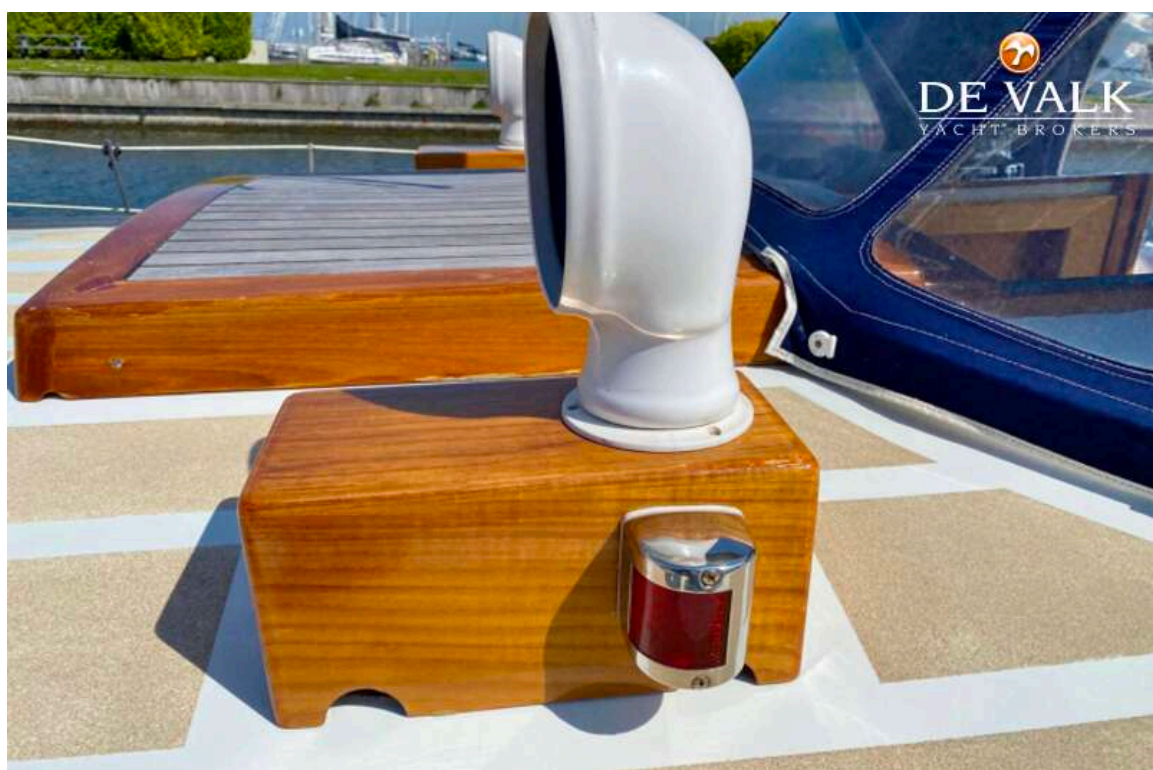


DANISH ROSE 37



DANISH ROSE 37





DANISH ROSE 37



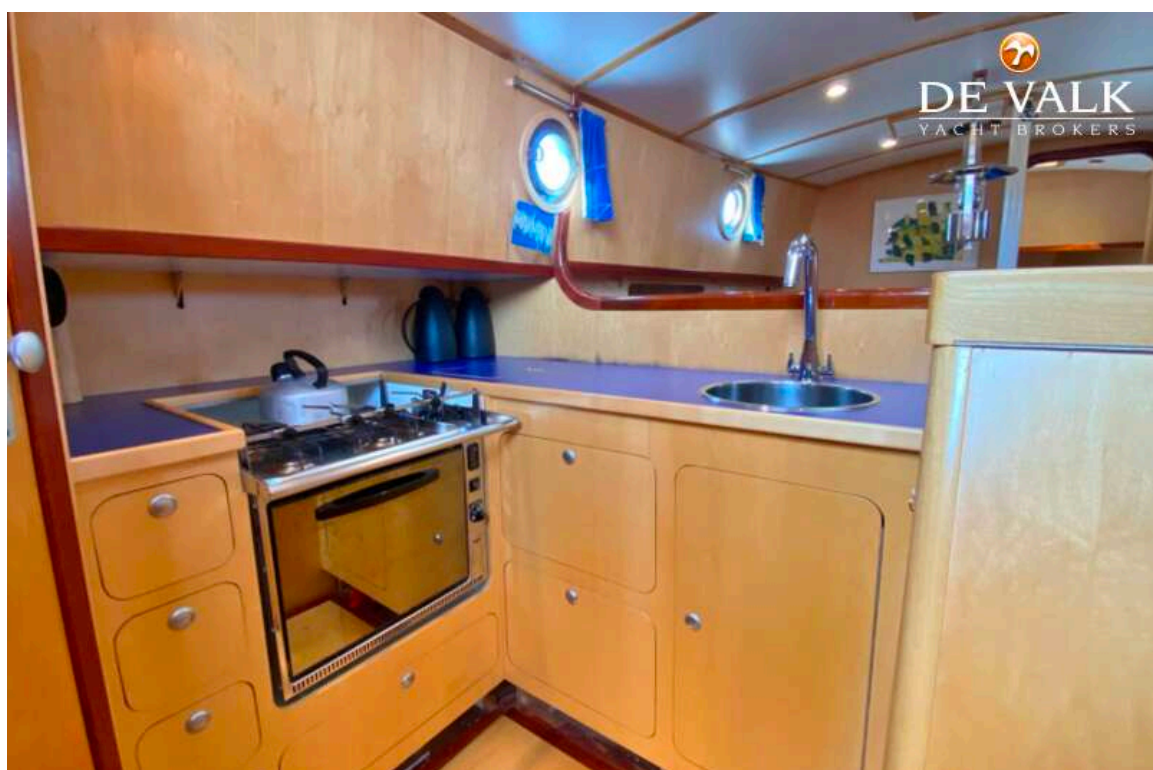
DANISH ROSE 37



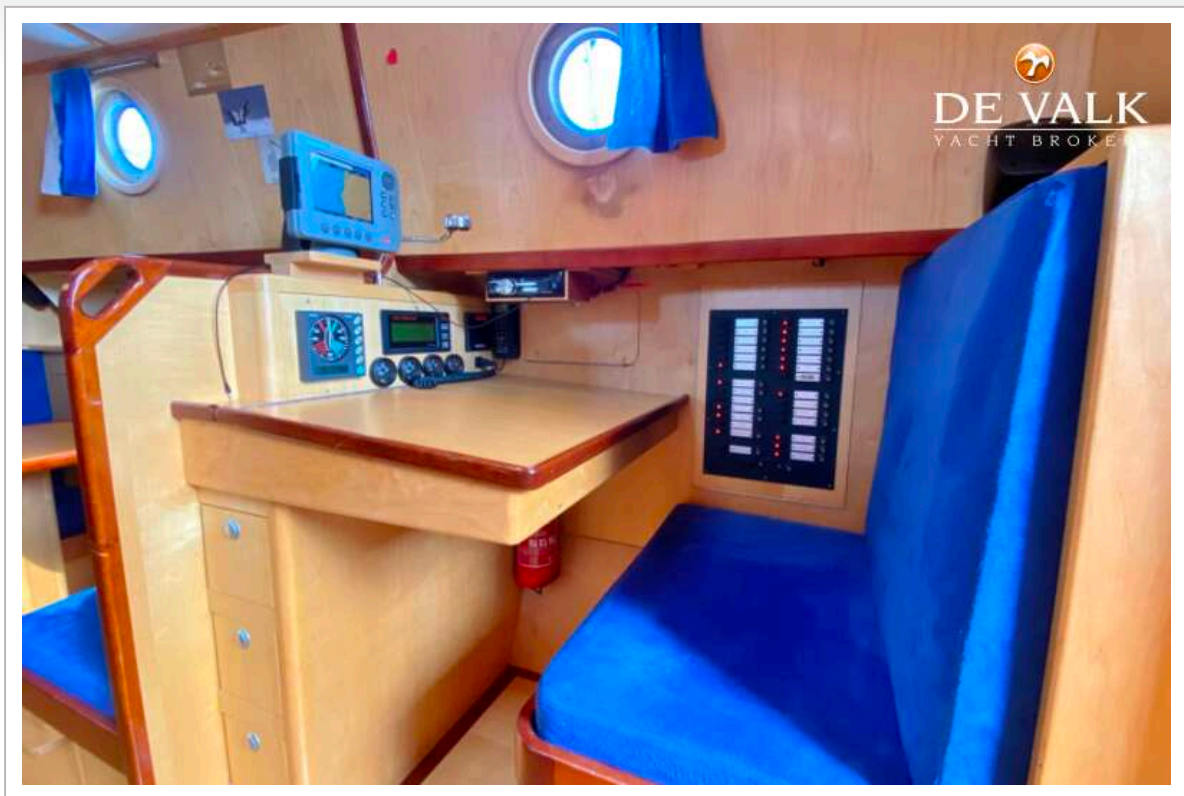
DANISH ROSE 37



DANISH ROSE 37



DANISH ROSE 37



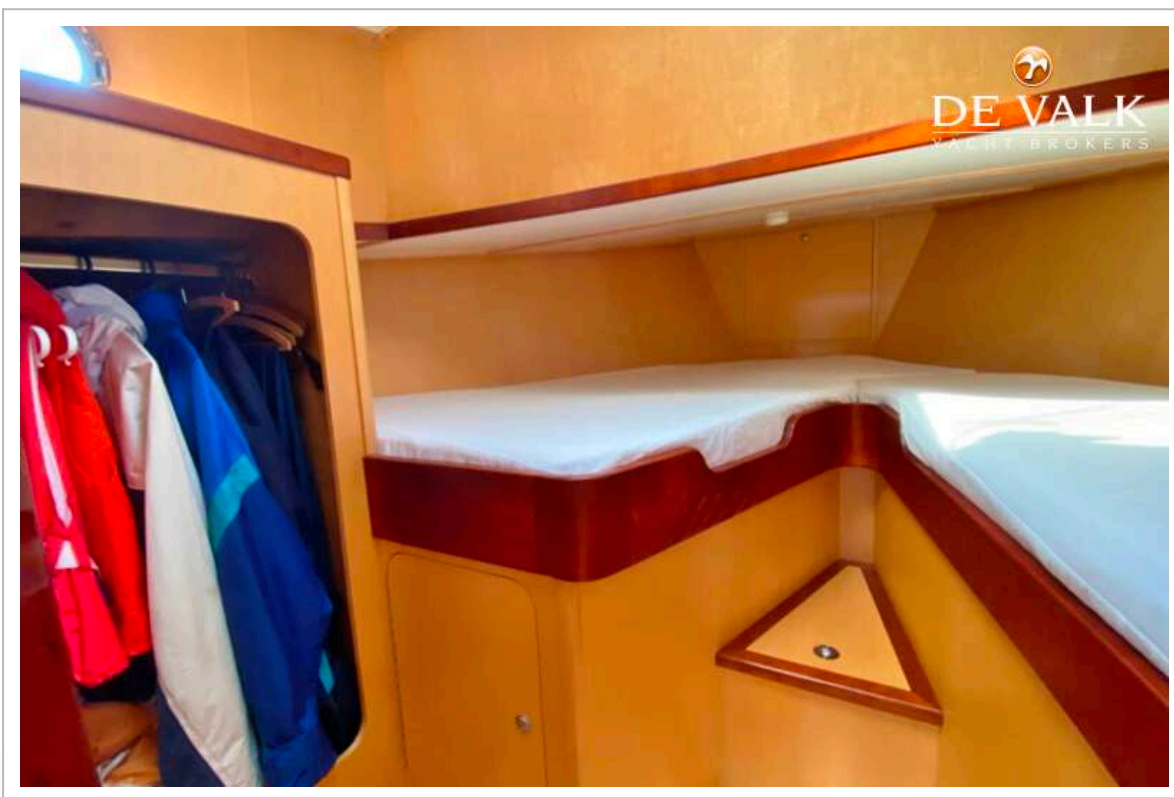
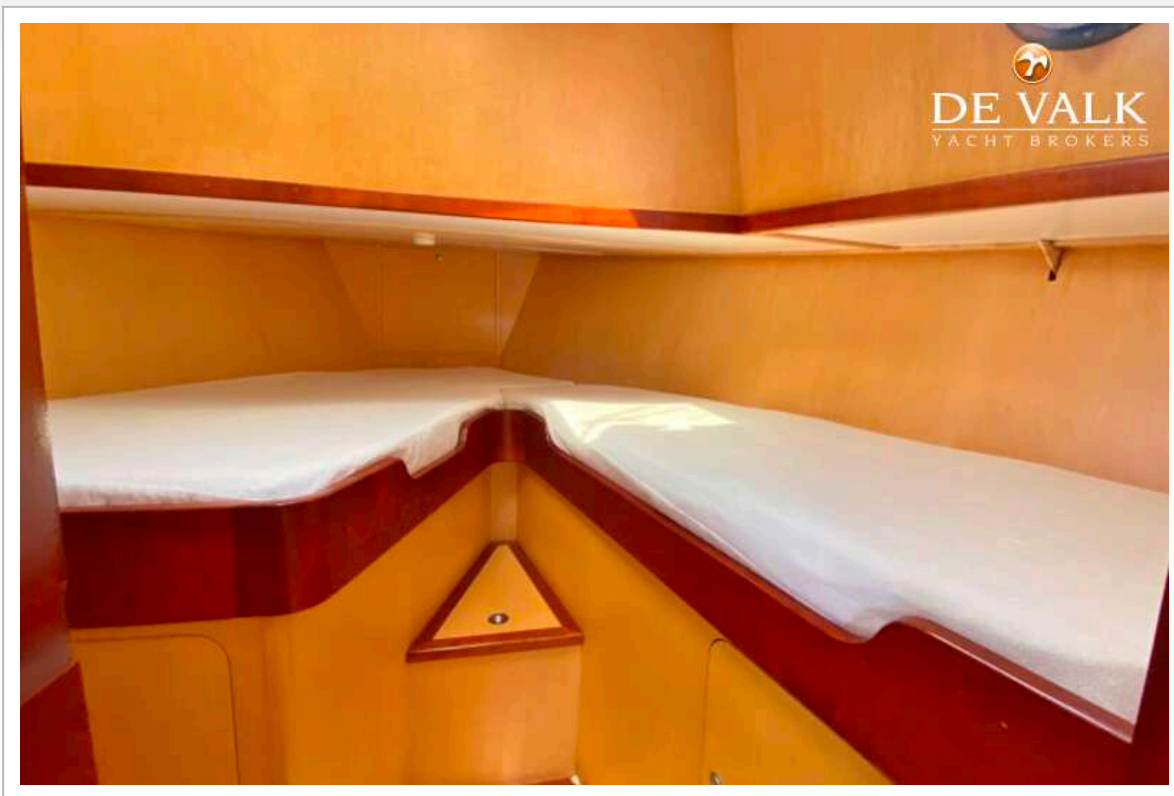
DANISH ROSE 37



DANISH ROSE 37



DANISH ROSE 37



DANISH ROSE 37



DANISH ROSE 37



DANISH ROSE 37



