



BREEHORN 37



BROKER'S COMMENTS

The Breehorn 37 is a typical Koopmans design: beautiful, timeless and fast. These characteristics make Koopmans yachts highly desirable classics amongst current generation sailing yachts. Because of the hull shape and choice of materials she is able to cruise comfortably and safely in all weather conditions. Although her semi-heavy displacement, she can be surprisingly fast and agile to sail. If you are looking for a sailingyacht for longer voyages, our well maintained and well equipped Breehorn 37 is definitely worth a visit.

Reinier van der Wolf

SPECIFICATIONS

Dimensions	11.27 x 3.55 x 1.45 (m)	Builder	Scheepswerf Breehorn BV, Elahuizen
Built	1984	Cabins	2
Material	GRP	Berths	6
Engine(s)	1 x Perkins 4108 diesel	Hp/Kw	47.00 (hp), 34.55 (kw)
Asking price	sold (VAT)	Lying	at sales office

CONTACT

Sales office	De Valk Monnickendam B.V.	Telephone	+31 (0)299 65 63 50
Address	Hoogedijk 6 1145 PM Katwoude NL	E-mail	monnickendam@devalk.nl

DISCLAIMER

These particulars are given in good faith as supplied but cannot be guaranteed.



GENERAL

Model	BREEHORN 37
Type	sailing yacht
LOA (m)	11,27
Beam (m)	3,55
Draft (m)	1,45
Air draft (m)	16,00
Headroom (m)	1,85
Year built	1984
Builder	Scheepswerf Breehorn BV, Elahuizen
Country	The Netherlands
Designer	Dick Koopmans
Displacement (t)	9,3
Ballast (tonnes)	lead 3,2
CE norm	NA
Hull material	GRP
Hull colour	blue Midnight blue (2020)
Hull shape	round-bilged
Keel type	fin keel
Superstructure material	GRP
Rubbing strake	wood
Deck material	GRP
Deck finish	teak
Superstructure deck finish	teak
Cockpit deck finish	teak
Antifouling (year)	2020
Dorades	2
Window frame	aluminium
Window material	tempered glass
Deckhatch	front hatch replaced (2014)
Fuel tank (litre)	stainless steel 200



Level indicator (fuel tank)	yes
Freshwater tank (litre)	stainless steel 200
Level indicator (freshwater)	VDO
Wheel steering	yes
More info on hull	new paint job hull (2020), anti-fouling Coppercoat, Anti-osmose layer.
Extra info	Teak deck completely refurbished in 2010. (rubbers and props), diesel tanks cleaned + man holes made + coating (2010)
Extra info	new rudder stock and bearings (2020), leather wheel renewed in 2009.

ACCOMMODATION

Cabins	2
Berths	6
Interior	teak
Floor	teak and holly
Saloon	yes
Headroom saloon (m)	1,90
Heating	diesel ducted hot air Webasto Airtop 3500
Chart table	yes
Aft Cabin	yes
Galley	yes
Countertop	plastic
Sink	stainless steel 2
Cooker	calor gas 3
Oven	yes
Fridge	Isotherm
Hot water system	220V + engine Isotherm (2016)
Water pressure system	electrical (2014)
Owners cabin	v-bed
Wardrobe	yes
Bathroom	yes



Toilet	shared (2011)
Toilet system	manual Jabsco
Wash basin	at the toilet
Guest cabin 1	double bed
Wardrobe	drawers and shelves
Extra info	upholstery (2013), LED interior lights (2015), toilet hoses renewed (2011)

MACHINERY

No of engines	1
Make	Perkins
Type	4108
HP	47
kW	34,55
Fuel	diesel
Year installed	1984
Year of overhaul	Complete overhaul in 2010 - 1747 hours since
Maximum speed (kn)	7,2
Cruising speed (kn)	6,5
Consumption (l/hr)	3
Engine hours	1747
Engine cooling system	freshwater heat exchanger
Drive	shaft
Engine controls	bowden cable (2011)
Exhaust	watercooled 2011
Propeller type	fixed
Propeller blades	3
Propeller shaft material	stainless steel 2019
Manual bilge pump	yes
Electric bilge pump	yes
Start battery	100 Ah (2018)



Service battery	4 x 110 Ah (2015)
Battery monitor	Victron (2017)
Battery charger	Mastervolt 12/50 (2018)
Inverter	yes
Solar panel	flexiable panel
Shorepower	with cable 2016
Extra info	wiring and electra (2017), Alternator (2009), CV joint propeller shaft bearing (2019), solar panel with charger control (2015), shorepower with earth leakage circuit breaker.
Extra info	gearbox overhaul + fuel pump overhaul (2010), propeller shaft inner- (2019) and outer packing (2014), fuel filler hose and aerator (2011), fuel feed pump + filters and oil (2020)

NAVIGATION

Compass	Steering position and entrance 2x
Depth sounder	Autohelm ST50
Log	Autohelm ST50
Windset	Autohelm ST50
Repeater	Philips MK2 Navigator
VHF	Icom DSC
Autopilot	Raymarine ST6001 Smart Pilot (2016)
Rudder angle indicator	(2017)
GPS	Philips MK2 Navigator
Plotter	Raymarine A95 MFD WiFi (2016)
Navtex	yes
Personal computer	with GPS
Electronis chart(s)	Netherlands
AIS receiver	Icom
Navigation lights	LED 3 color top and anchor light (2019)
Extra info	wiring mast, top- and deck light (2017)

EQUIPMENT



Sprayhood	(2012)
Cockpit cover	(2012)
Cockpit cushions	yes
Boarding ladder	aluminum
Deck shower	(2015)
Anchor	Bruce
Anchor 2	yes
Windlass	manual
Sea railing	wire
Pushpit	s/s
Pulpit	s/s
Radar reflector	yes
Fenders	6x
Mooring lines	yes
Radio-cd player	with Bluetooth and USB connection
Cockpit speakers	(2015)
Fire extinguisher	2x
Extra info	stern anchor on roll

RIGGING

Rigging	sloop
Standing rigging	wire
Brand mast	Seldén
Material mast	aluminium
Spreaders	2
Fully battened mainsail	+ spare (2010)
Jib	yes
High aspect	(2010)
Genoa I	yes
Genoa II	yes
Genoa furler	Profurl C350 (2011)



Cutter furler	Profurl C350 (2011)
Gennaker	yes
Spinnaker	yes
Stormjib	yes
Backstay adjuster	mechanical Nemo
Boomvang	mechanical and tackle Selden Racing
Primary sheet winch	yes
Secondary sheet winch	2x Barbarossa 31.2
Genoa sheetwinches	2x Barbarossa 51.2
Halyard winches	on mast 3x Barbarossa
Isolated backstay	yes
Extra info	Extensive set of spare sails included
Extra info	running rigging (2012)



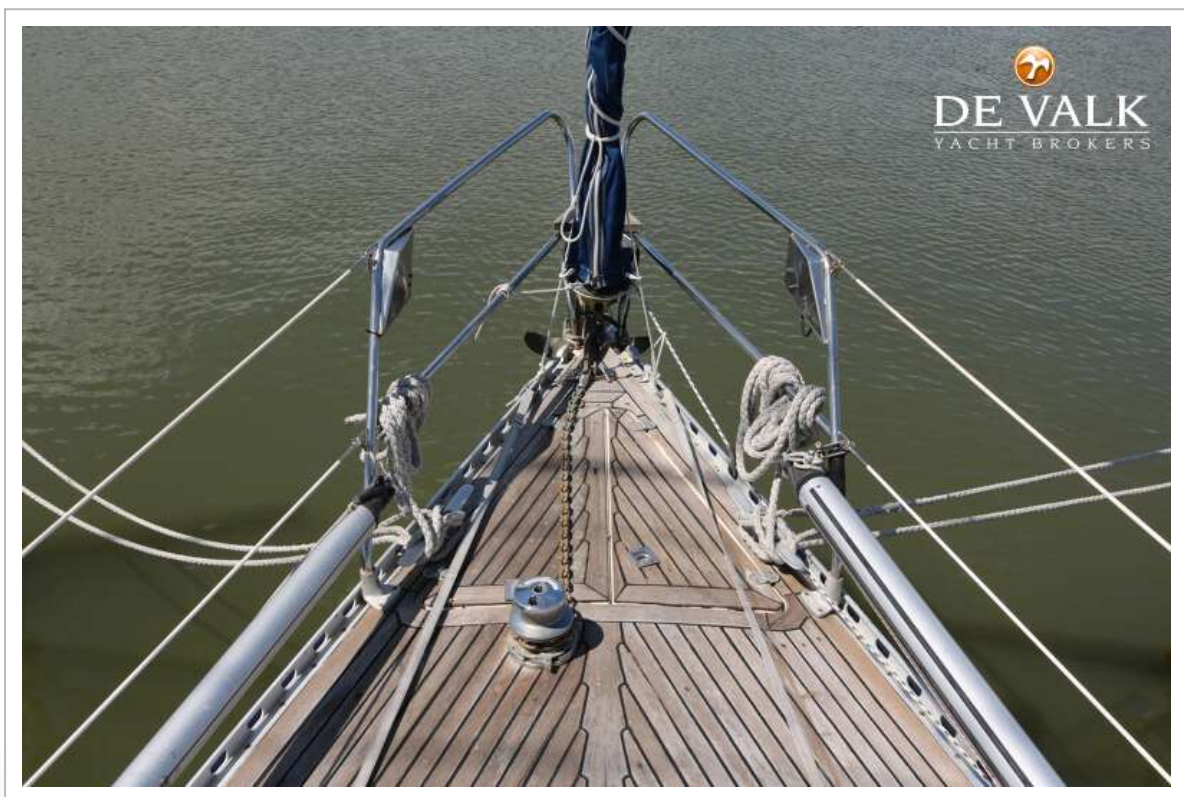
BREEHORN 37

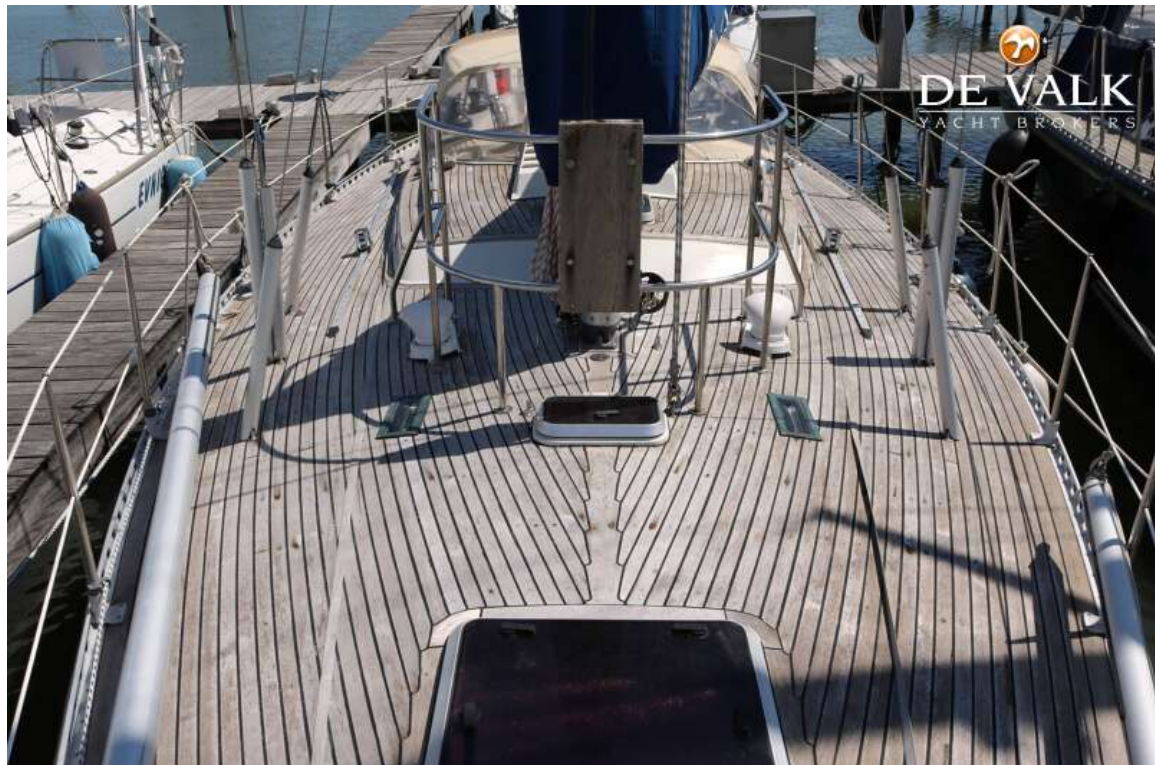


BREEHORN 37



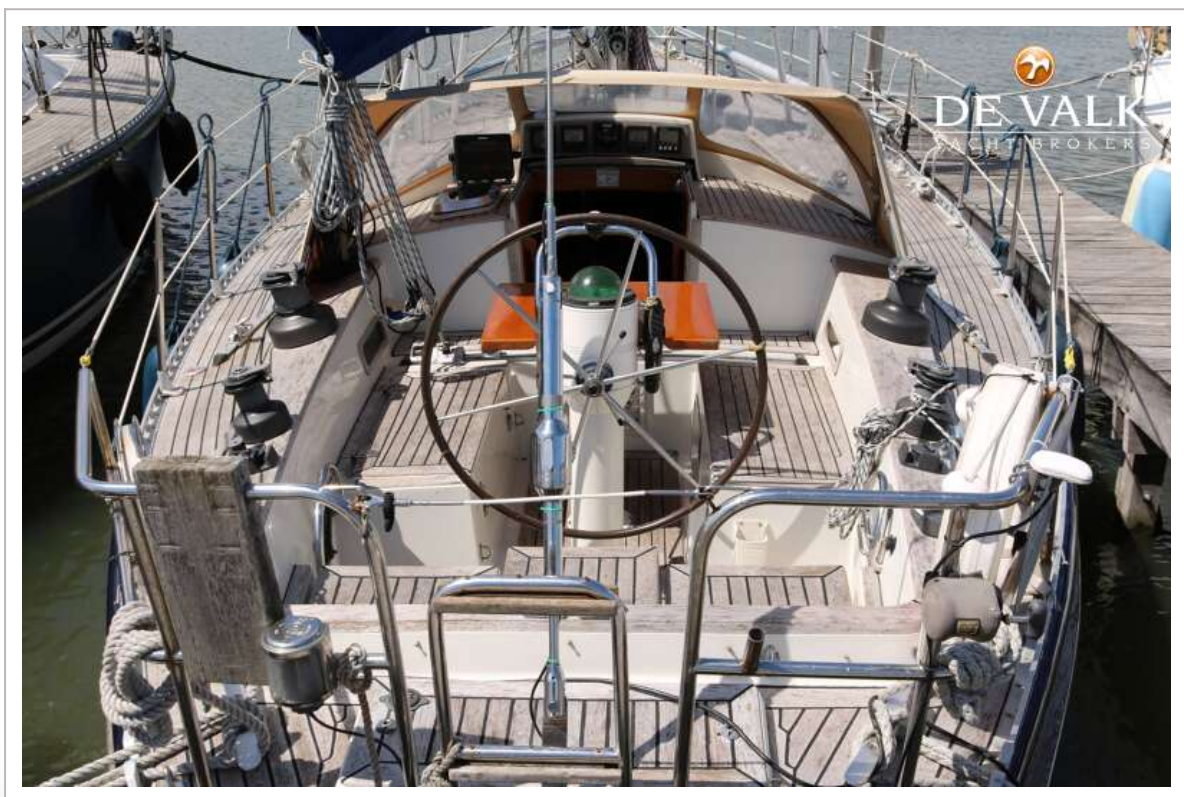
BREEHORN 37





BREEHORN 37





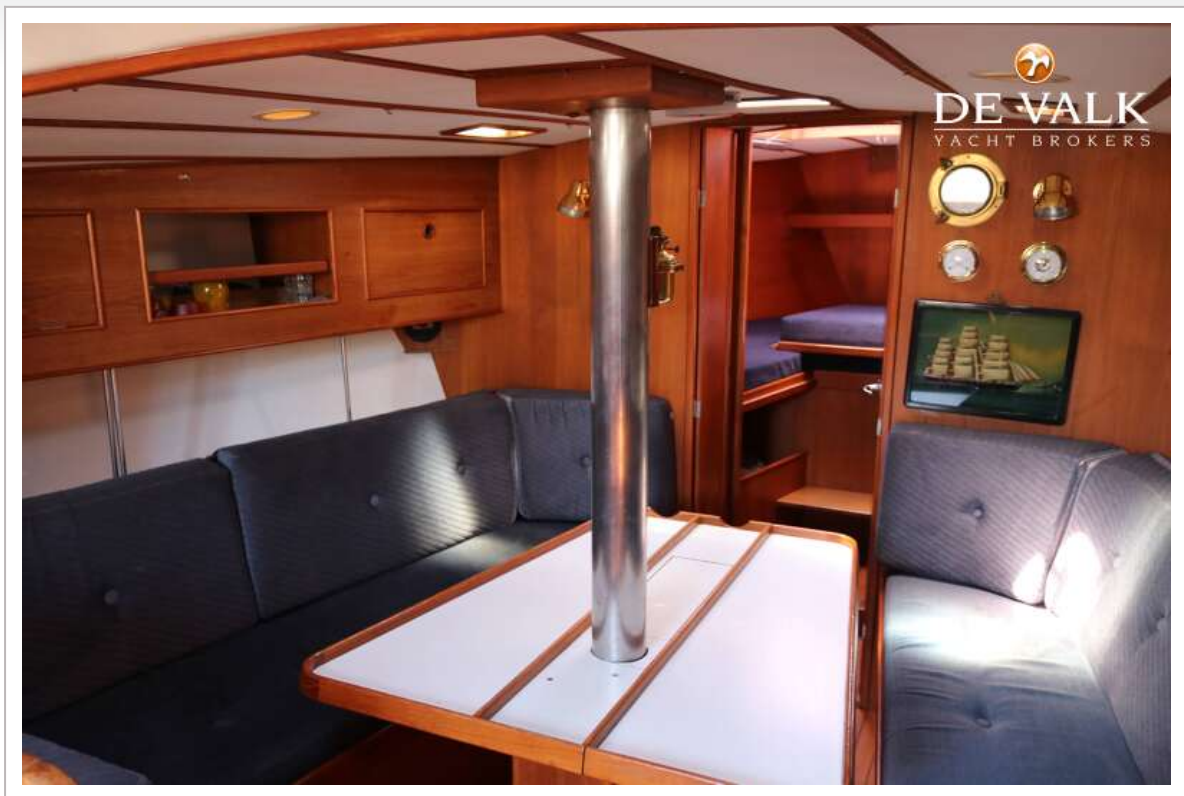




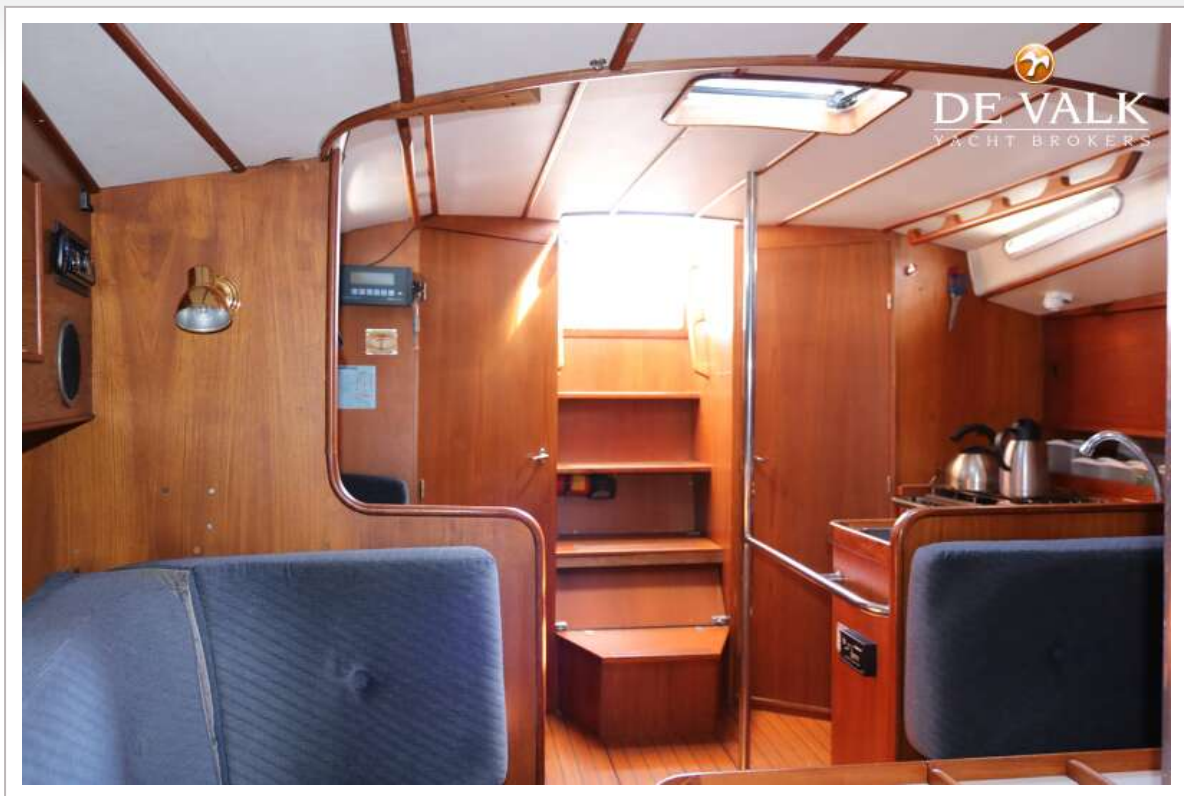




BREEHORN 37



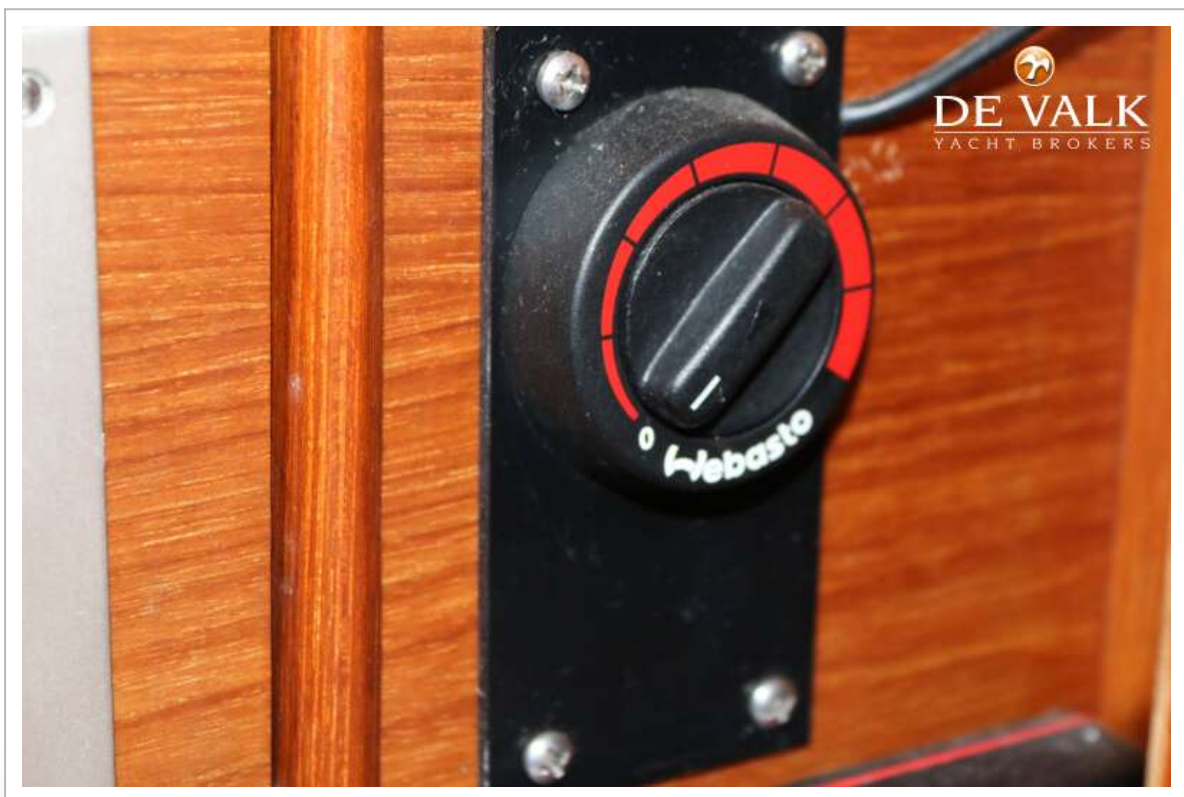
BREEHORN 37



BREEHORN 37



BREEHORN 37





BREEHORN 37

