



ELAN 40

BROKER'S COMMENTS

Best Performance Cruiser of the year 2004, the potential of the Elan 40 is recognized and appreciated by many. Good size and safe cockpit, the salon provides great space at her crew and three spacious cabins for a good night of sleep and a nicely crafted mahogany interior. Ample storage space throughout the boat. One of the better choices for a safe and reliable sporty family cruiser. Seven Seas comes very well equipped among which 2017 Tri-Radiaal sails, Axion 9" touchscreen and renewed teak in cockpit and bathing platform. Ready for viewing in our sales marina.

Harald Padberg

SPECIFICATIONS

Dimensions	12.20 x 3.83 x 2.10 (m)	Builder	Elan Marine D.O.O.
Built	2004	Cabins	3
Material	GRP	Berths	8
Engine(s)	1 x Volvo Penta MD-2040 DBT diesel	Hp/Kw	40.00 (hp), 29.40 (kw)
Asking price	sold (VAT)	Lying	at sales office

CONTACT

Sales office	De Valk Monnickendam B.V.	Telephone	+31 (0)299 65 63 50
Address	Hoogedijk 6 1145 PM Katwoude NL	E-mail	monnickendam@devalk.nl

DISCLAIMER

These particulars are given in good faith as supplied but cannot be guaranteed.



GENERAL

Model	ELAN 40
Type	sailing yacht
LOA (m)	12,20
Beam (m)	3,83
Draft (m)	2,10
Headroom (m)	1,98
Year built	2004
Builder	Elan Marine D.O.O.
Country	Slovenia
Designer	Rob Humphrey
Displacement (t)	8,4
CE norm	A
Hull material	GRP
Hull colour	blue
Hull shape	round-bilged
Keel type	fin keel
Superstructure material	GRP
Rubbing strake	Teak + Stainless Steel
Deck material	GRP
Deck finish	teak
Superstructure deck finish	non-skid moulded in
Cockpit deck finish	teak
Antifouling (year)	2020
Dorades	2 X
Window frame	aluminium
Window material	polycarbonate
Deckhatch	4 x
Portholes	aluminium 2 x
Fuel tank (litre)	stainless steel 135 L.
Level indicator (fuel tank)	yes



Freshwater tank (litre)	stainless steel 2 x (235 L. comb.)
Level indicator (freshwater)	yes
Greywater tank (litre)	yes
Wheel steering	mechanical
Emergency tiller	yes
More info on hull	Rudder blade replaced in 2016. Also safety inspection performed on keel construction and reinstalled. Delivered new with Gelshield epoxy system.
More info on paintwork	Teak finish in the cockpit and bathing platform renewed in 2019.
Extra info	All windows with curtains and insect screens.

ACCOMMODATION

Cabins	3
Berths	8
Interior	cherry
Floor	teak and holly
Headroom saloon (m)	1,98 M
Heating	diesel ducted hot air Webasto
Aft Cabin	2 X
Dinette	yes
Convertible berth	yes
Galley	yes
Countertop	corian
Sink	stainless steel 2 X
Cooker	calor gas
Oven	yes
Fridge	Isotherm
Hot water system	220V + engine Boiler Quick-B3 / 25 Ltr. - 2013
Water pressure system	electrical
Manual and/or foot pump	yes
Owners cabin	double bed
Bed length (m)	2,20



Wardrobe	hanging/drawers/shelves
Bathroom	shared
Toilet	shared
Toilet system	manual
Wash basin	in the bathroom
Shower	shared
Guest cabin 1	double bed
Bed length (m)	2,00 x 1,80
Wardrobe	hanging and shelves
Guest cabin 2	double bed
Bed length (m)	2,00 x 1,80
Wardrobe	hanging and shelves
Extra info	Heating Air vents in every cabin. New flexible gas hoses 2019

MACHINERY

No of engines	1
Make	Volvo Penta
Type	MD-2040 DBT
HP	40
kW	29,40
Fuel	diesel
Maximum speed (kn)	8
Cruising speed (kn)	6
Consumption (l/hr)	2,3
Engine cooling system	freshwater heat exchanger
Drive	sail-drive
Engine controls	bowden cable
Propeller type	folding
Propeller blades	3
Manual bilge pump	yes
Electric bilge pump	yes



Start battery	1 x
Service battery	new 2020 - 3 x Varta 12V / 105 Ah
Battery charger	Victron Phoenix 12V / 50A
Shorepower	with cable
Extra info	Engine service April 2020

NAVIGATION

Compass	yes
Depth sounder/log	Raymarine ST60
Log	2020 new log transducer
Windset	Raymarine ST60
VHF	Simrad RS87 with DSC
Autopilot	Raymarine SmartPilot S2 + Gyroplus 2 SHS
Radar	yes
Radar/GPS/plotter	Raymarine Axiom 9-9"mfd touchscreen - new 2018
AIS receiver	yes
AIS transponder	yes
Navigation lights	LED + tri-color topleight

EQUIPMENT

Sprayhood with grab rail	yes
Cockpit table	yes
Bathing platform	yes
Boarding ladder	stainless steel
Deck shower	cold and warm water
Anchor	CQR Plough
Windlass	electrical Loftrans
Outboard support	yes
Sea railing	wire
Grab rail (superstructure)	stainless steel
Railing side opening gates	yes



Pushpit	yes
Pulpit	yes
Radar reflector	yes
Fenders	6 x
Mooring lines	yes
Radio-cd player	Alpine
Cockpit speakers	2 x
Speakers in salon	2 x Alpine

RIGGING

Rigging	fractional
Standing rigging	wire
Brand mast	Sparcraft
Material mast	aluminium
Spreaders	double
Keel stepped mast	yes
Mainsail	Triradiaal CDX 7-6 Dacronlaminaat - new 2017
Mainsail cover	yes
Jib	yes
High aspect	yes
Genoa	Triradiaal CDX 7-6 Dacronlaminaat - new 2017
Genoa furler	yes
Gennaker	+ snuffer / sock
Spinnaker	+ snuffer / sock
Reefing System	quick-one-line-reefing
Backstay adjuster	mechanical Selden
Boomvang	mechanical and tackle Selden
Primary sheet winch	Harken 44 2-speed
Genoa sheetwinches	Harken 53 2-speed
Multifunctional winches	halyard/sheet winches Upgrade electr. winch Harken 44.STE: 2013



Spi-pole

Extra info

Extra info

aluminium Selden

Lazy jacks.

2019 new reefing and Genoa sheets



ELAN 40



ELAN 40



ELAN 40



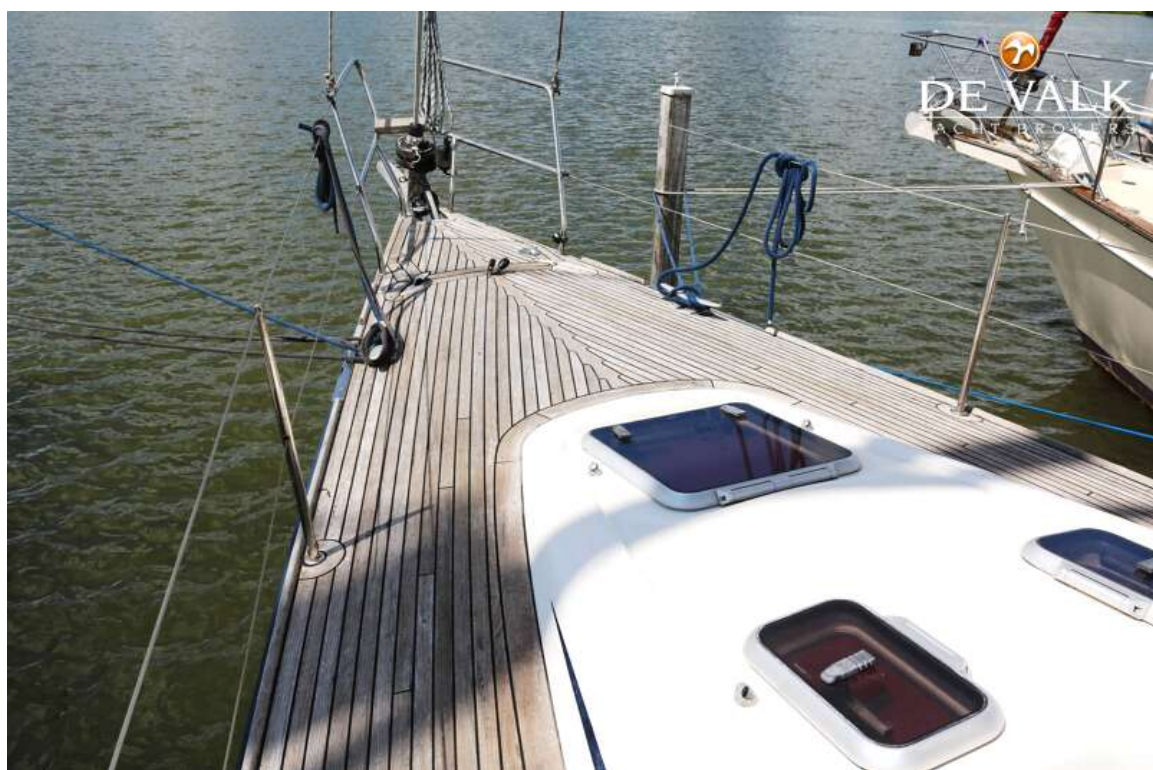
ELAN 40



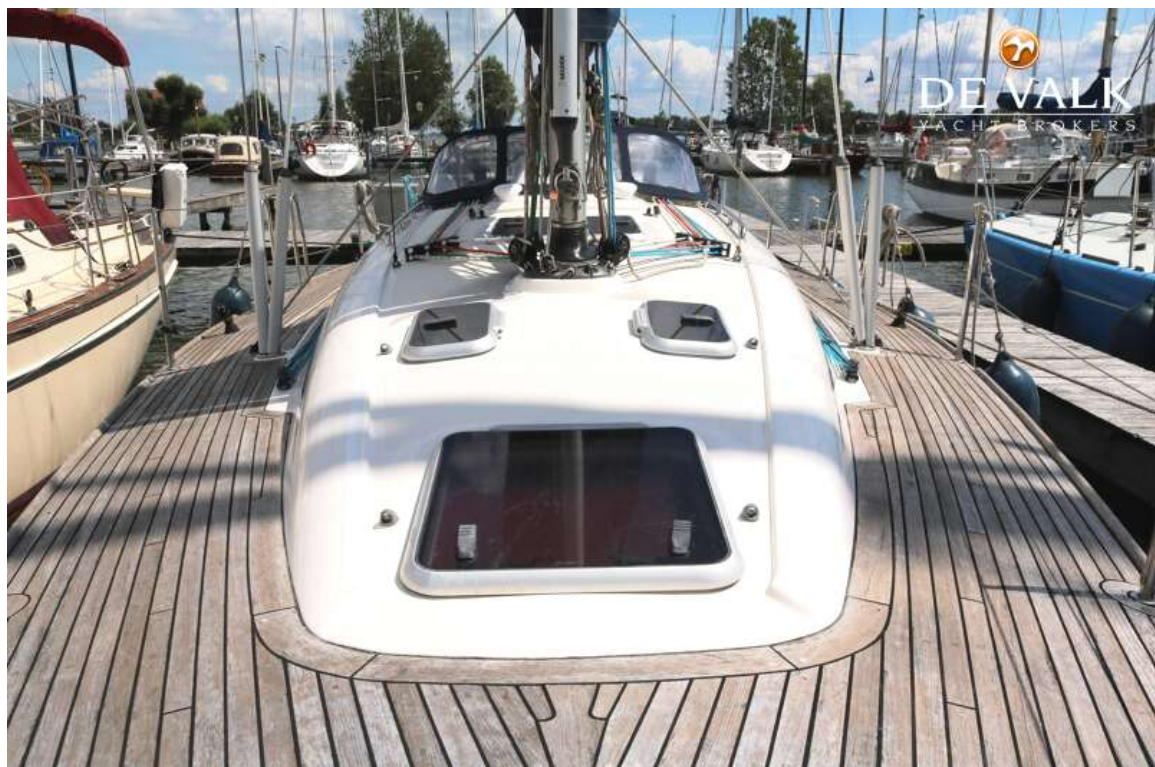
ELAN 40



ELAN 40



ELAN 40



ELAN 40



ELAN 40



ELAN 40



ELAN 40

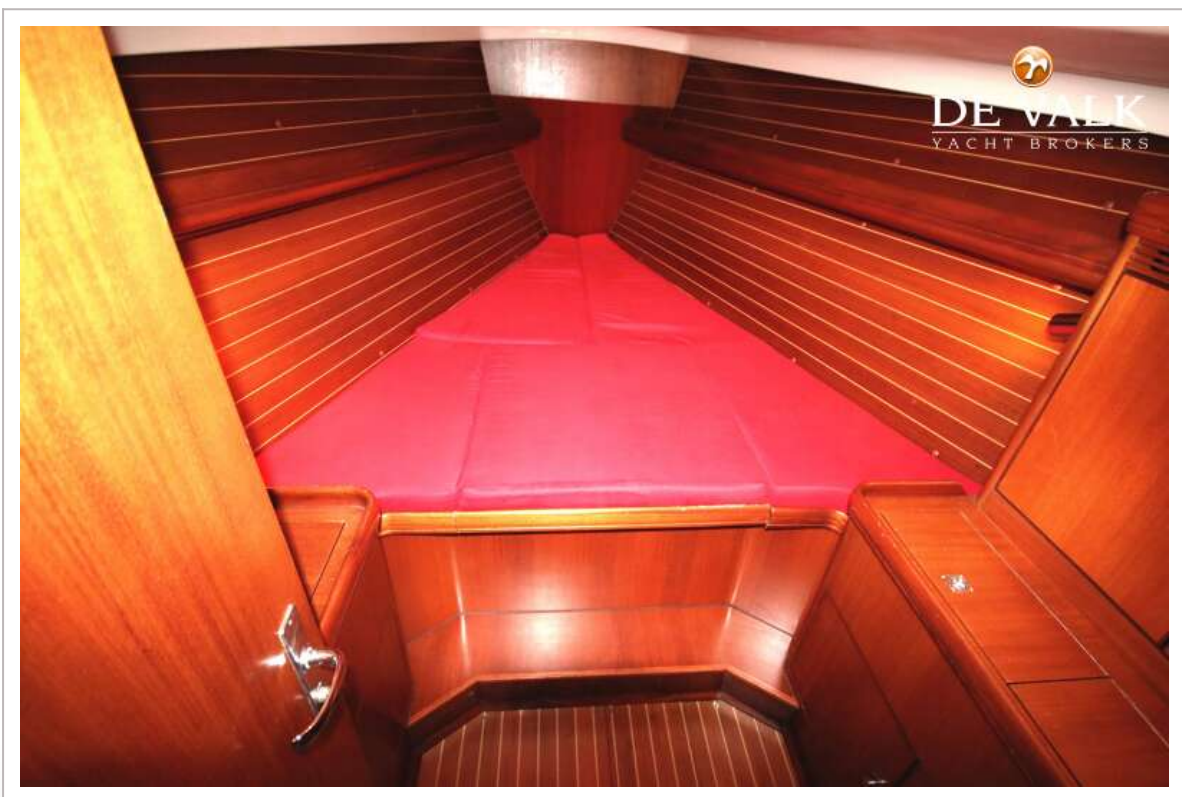




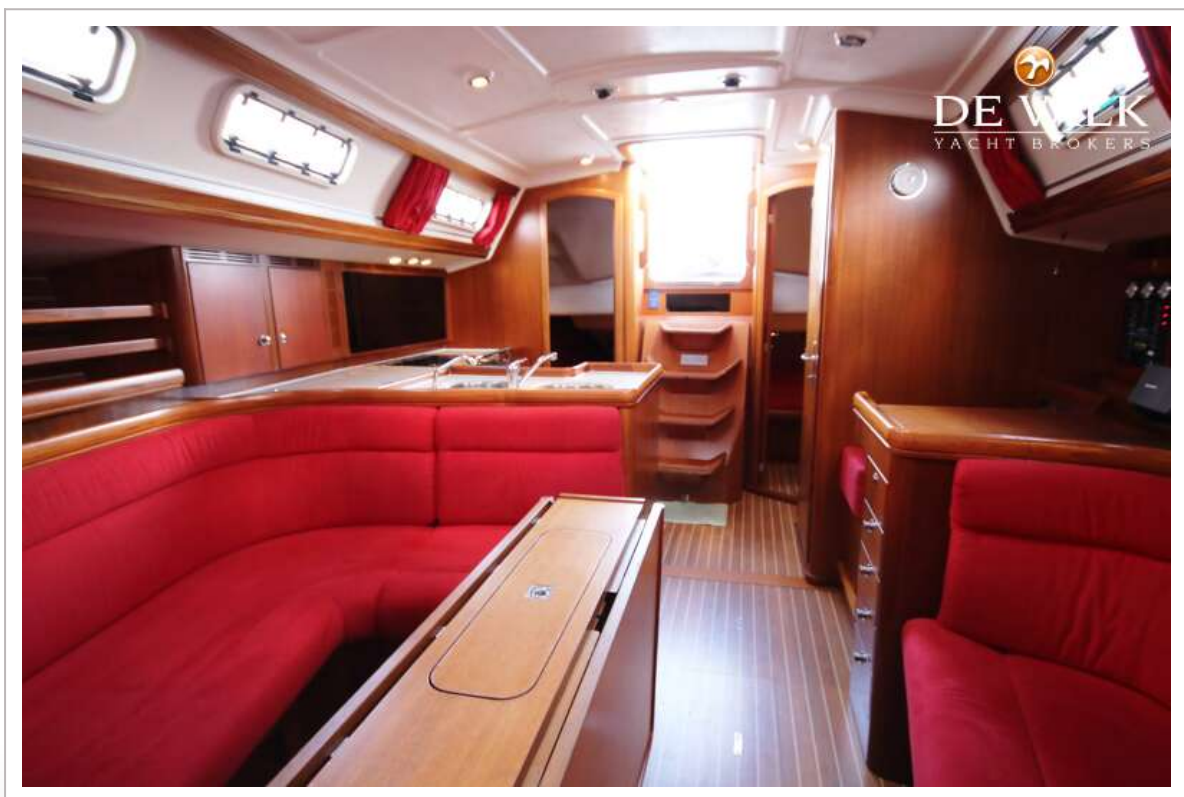
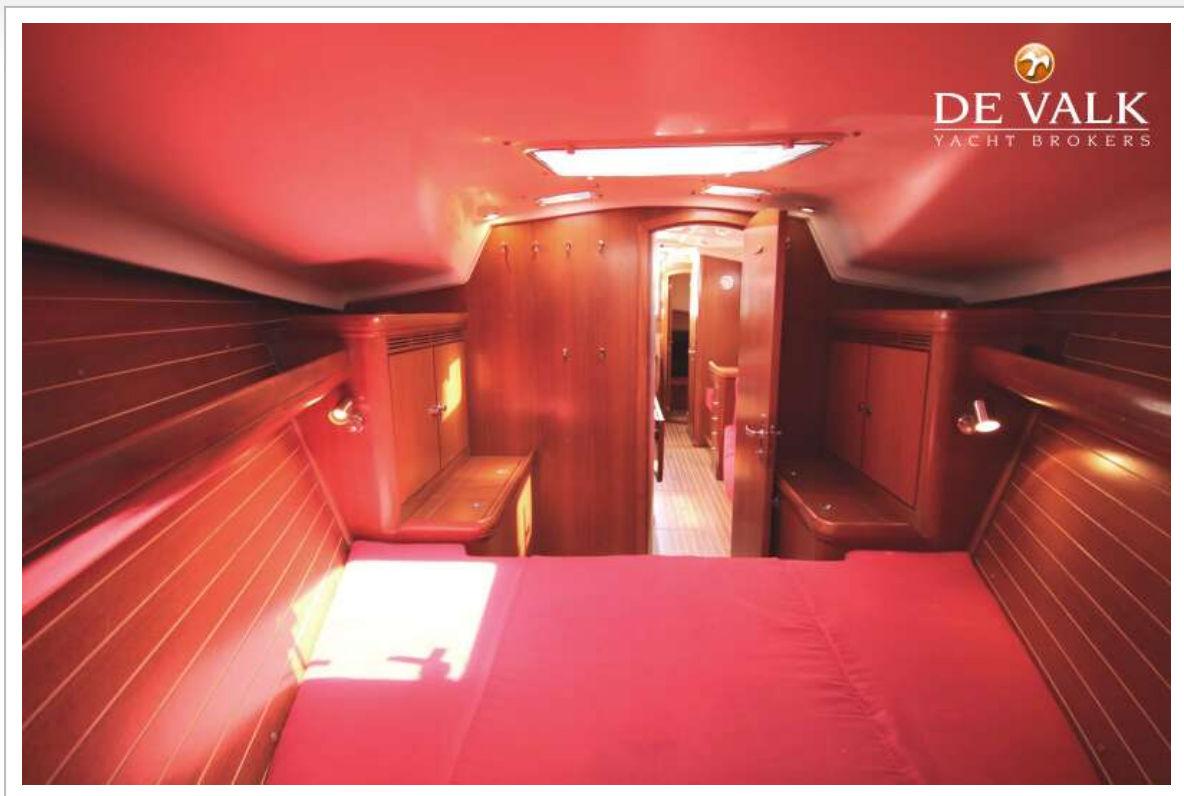
ELAN 40



ELAN 40



ELAN 40



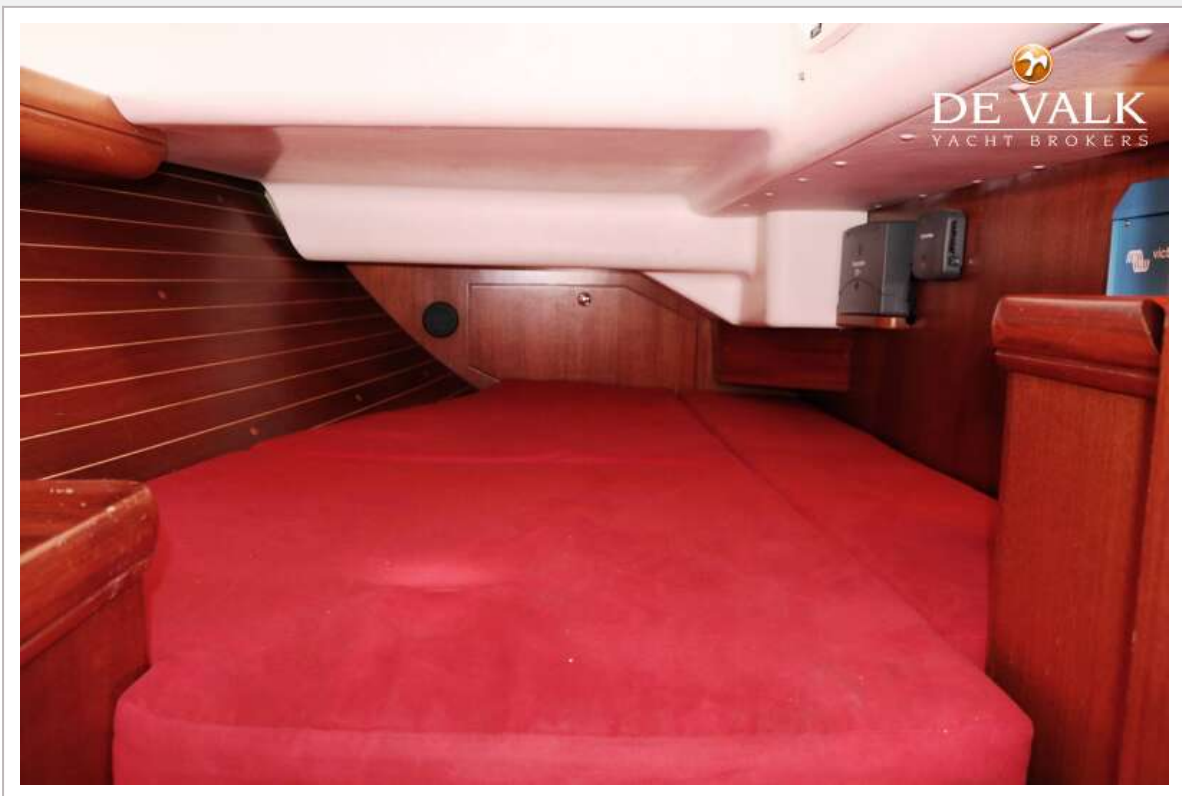
ELAN 40



ELAN 40



ELAN 40





ELAN 40



ELAN 40

