



DE VALK
YACHT BROKERS



DEHLER 41 CRUISING



DE VALK
YACHT BROKERS

BROKER'S COMMENTS

This Dehler 41 Cruiser is the flagship of the series. She is offered for sale by her second owner, who has put her together with care and attention to details. The owner has not made any cuts. The powerful 55 HP Yanmar engine has only 400 engine hours. The yacht has been equipped with electric winches, bowthuster and extensive navigation and audio equipment. She is a comfortable yacht for cruising and stay on board, but also for sporty sailing. The "Beau 4" can be inspected in our sales marina.

Sander van der Voorn

SPECIFICATIONS

Dimensions	12.45 x 3.90 x 1.95 (m)	Builder	Dehler Yachtbau GmbH
Built	2005	Cabins	3
Material	GRP	Berths	6
Engine(s)	1 x Yanmar 4JH4E diesel	Hp/Kw	55.00 (hp), 40.42 (kw)
Asking price	sold (VAT)	Lying	at sales office

CONTACT

Sales office	De Valk Monnickendam B.V.	Telephone	+31 (0)299 65 63 50
Address	Hoogedijk 6 1145 PM Katwoude NL	E-mail	monnickendam@devalk.nl

DISCLAIMER

These particulars are given in good faith as supplied but cannot be guaranteed.



GENERAL

Model	DEHLER 41 CRUISING
Type	sailing yacht
LOA (m)	12,45
LWL (m)	11,05
Beam (m)	3,90
Draft (m)	1,95
Air draft (m)	20,50
Headroom (m)	1,95
Year built	2005
Launched	2005 - 05
Builder	Dehler Yachtbau GmbH
Country	Germany
Designer	Judel & Vrolijk
Displacement (t)	8,9
Ballast (tonnes)	cast iron and lead 3,291
CE norm	A
Hull material	GRP
Hull colour	blue Reichold RAL 7177
Hull shape	round-bilged
Keel type	bulb keel
Superstructure material	GRP
Rubbing strake	rubber
Deck material	GRP
Deck finish	teak Service 2020
Superstructure deck finish	teak
Cockpit deck finish	teak
Antifouling (year)	black, hull with water barrier coating system 4-2020
Dorades	2
Window frame	aluminium
Window material	polycarbonate



Deckhatch	7
Portholes	aluminium 6
Fuel tank (litre)	stainless steel 140
Level indicator (fuel tank)	yes
Freshwater tank (litre)	polyethylene 2 x 200
Level indicator (freshwater)	yes
Blackwater tank (litre)	stainless steel 115
Level indicator (blackwater)	yes
Blackwater tank extraction	deck extraction + pump
Wheel steering	mechanical
Emergency tiller	yes
More info on hull	unique color Anodes 2020
Extra info	Radar pole non collapsible
Extra info	Lewmar 5 spoke steering wheel extra large diameter covered with leather
Extra info	steering wheel cover, 2016 De Vries sails

ACCOMMODATION

Cabins	3
Berths	6
Interior	cherry
Floor	teak and holly
Open cockpit	yes
Saloon	u-shaped sofa upholstery blue Jabana 1-3002-258
Headroom saloon (m)	1,95
Heating	diesel ducted hot air Webasto Airtop 5000
Chart table	Teakwood holders
Aft Cabin	2 x
Dining room	yes
Sliding door to cockpit	Dehler system
Galley	yes



DEHLER 41 CRUISING

Countertop	Duropol
Sink	stainless steel 2 x
Cooker	calor gas
Oven	calor gas
Gas alarm	yes
Microwave	yes
Fridge	Frontlader + Toplader with compressor 2 x 80 liter
Hot water system	220V + engine 25 liter boiler
Water pressure system	electrical
Owners cabin	double bed
Bed length (m)	2,10
Wardrobe	hanging/drawers/shelves
Bathroom	separate
Toilet	shared
Toilet system	manual New seals 2020
Wash basin	in the bathroom
Shower	shared
Extra info	Toilet with electric valve selection via waste water tank or overboard
Guest cabin 1	double bed Comfort Bulltex
Bed length (m)	2,00
Wardrobe	hanging and shelves
Bathroom	separate
Toilet	shared New seals 2020
Toilet system	manual
Extra info	Comfort Bulltex Mattress, DVD built into the ceiling, radio CD player with speakers
Guest cabin 2	double bed
Bed length (m)	2,00
Wardrobe	hanging and shelves
Wet bar	for 4 bottles between card table and u-bank
Extra info	deck hatch with mosquito nets



Extra info

2nd wet cell with 2 additional built-in cabinets and hanging rack for sailing clothing

MACHINERY

No of engines	1
Make	Yanmar
Type	4JH4E
HP	55
kW	40,42
Fuel	diesel
Year installed	2005
Maximum speed (kn)	7,5
Cruising speed (kn)	7
Consumption (l/hr)	3
Engine hours	400
Engine cooling system	freshwater heat exchanger
Drive	shaft
Shaft seal	yes
Engine controls	bowden cable
Gearbox	mechanical
Bowthruster	electric Side Power 75 IT 6 HP
Exhaust	watercooled
Propeller type	reversible Gori
Propeller blades	3
Propeller shaft material	stainless steel
Shaft lubrication	water
Manual bilge pump	yes
Electric bilge pump	yes
Electrical installation	12/220 volt
Start battery	1 x 60 Ah
Service battery	3 x 220 Ah Gell, AGM deep cycle



Battery monitor	Victron BMV - 501
Battery charger/inverter	with phoenix multi remote panel Victron Easyplus C12/2000 80-30 mppt
Shorepower	with cable 2 x
Extra info	High power alternator 12V / 80Ah
Extra info	overhaul gearbox 04-2020

NAVIGATION

Compass	yes
Electric compass	through autopilot
Depth sounder/log	Raymarine ST 60 Tridata
Log	Raymarine ST 60
Windset	Raymarine ST 60
Repeater	2 x Raymarine ST 60
VHF	Raymarine 240E atis gps
Autopilot	Raymarine ST 700 smart pilot S2G rate gyro + linear drive type 2
Radar	Raymarine S45 dome semi cardanisch
GPS	Ray Star 125 GPS / SD
Radar/GPS/plotter	Raymarine E80
Navtex	MC Murdo Nav 6 plus
Personal computer	PC/JLT 1204-1
Electronic chart(s)	Platinum Navionics 25T (2018)
AIS transponder	new 12-2019
EPIRB	new 12-2019
Personal MOB transmitter	Via Raymarine E80
Navigation lights	with 3 colour top light
Extra info	reserve VHF antenna, combi antenna VHF, GSM, AIS

EQUIPMENT

Fixed windscreen	yes
Sprayhood	anthracite De Vries sails 2016



DEHLER 41 CRUISING

Sprayhood with grab rail	yes
Fixed hardtop	lower part with folding window
Cockpit cover	yes
Bimini	yes
Winter cover	yes
Cockpit cushions	yes
Cockpit table	yes
Bathing platform	foldable with teak finish
Boarding ladder	stainless steel
Deck shower	hot/cold water
Anchor	Bruce 20 KG
Anchor chain	40 mtr. 12-2019
Windlass	electrical Lewmar
Deck wash	hose with pistol Whale UP1815 + filter
Sea railing	wire
Grab rail (superstructure)	wood
Railing side opening gates	both edges
Pushpit	yes
Pulpit	yes
Life raft	container
Last life raft survey	till 2024
Safety harness	yes
Danbuoy	yes
Radar reflector	White Blipper on mast
Fenders	6 x
Mooring lines	4 x
Spare parts	yes
Alarm system	needs services
TV	yes
TV receiver	KPN Digitenne
Radio-cd player	yes
DVD player	yes



Cockpit speakers	water proof 2x Clarion
Clock - barometer	- hygrometer in salon
Fire extinguisher	3 x (2020)
Latest extinguisher survey	must be inspected
Extra info	Steering wheel cover anthracite 2016
Extra info	Co2 detector (2020)

RIGGING

Rigging	sloop 7/8
Standing rigging	Dyform
Brand mast	Sparcraft
Material mast	aluminium
Spreaders	2 x 2
Mainsail	Dehler Maindrop, anthraciet de Vries sails 2016
Fully battened mainsail	Norht sail 2016
Genoa II	140% Elvström ca 2013
Genoa furler	Furlex
Genoa cover	Anthraciet De Vries Sails 2016
Booster	Red, white, blue barely used 2010
Self tacking jib installation	Used for 1 season 32m2
Reefing System	quick-one-line-reefing
Backstay adjuster	tackle
Boomvang	gasspring
Primary sheet winch	2 x Harken AST 48 electric
Secondary sheet winch	2 x Harken ST 44
Halyard winches	1 x Lewmar ST 30
Winchcovers	4 x
Spi-pole	aluminium
Gennaker pole	carbon
Extra info	lightning protection built into the mast



DEHLER 41 CRUISING



DEHLER 41 CRUISING



DEHLER 41 CRUISING



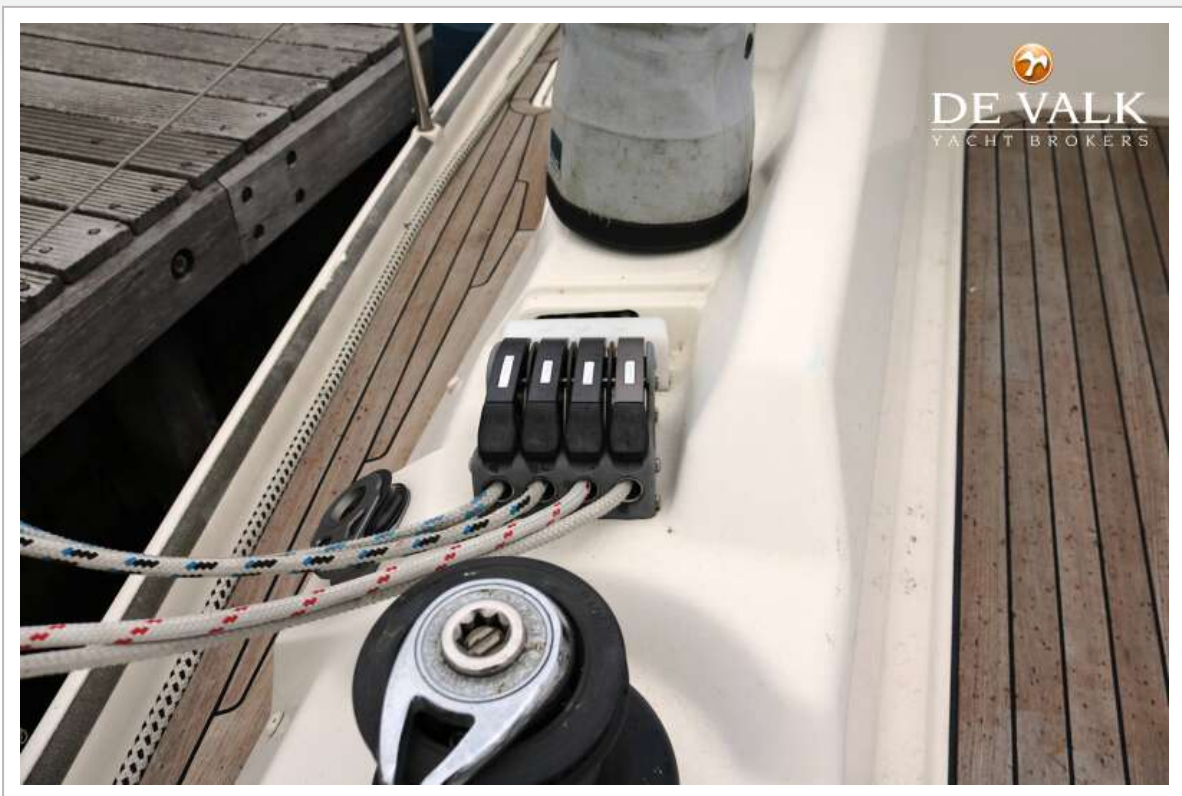
DEHLER 41 CRUISING



DEHLER 41 CRUISING



DEHLER 41 CRUISING



DEHLER 41 CRUISING



DEHLER 41 CRUISING



DEHLER 41 CRUISING



DEHLER 41 CRUISING



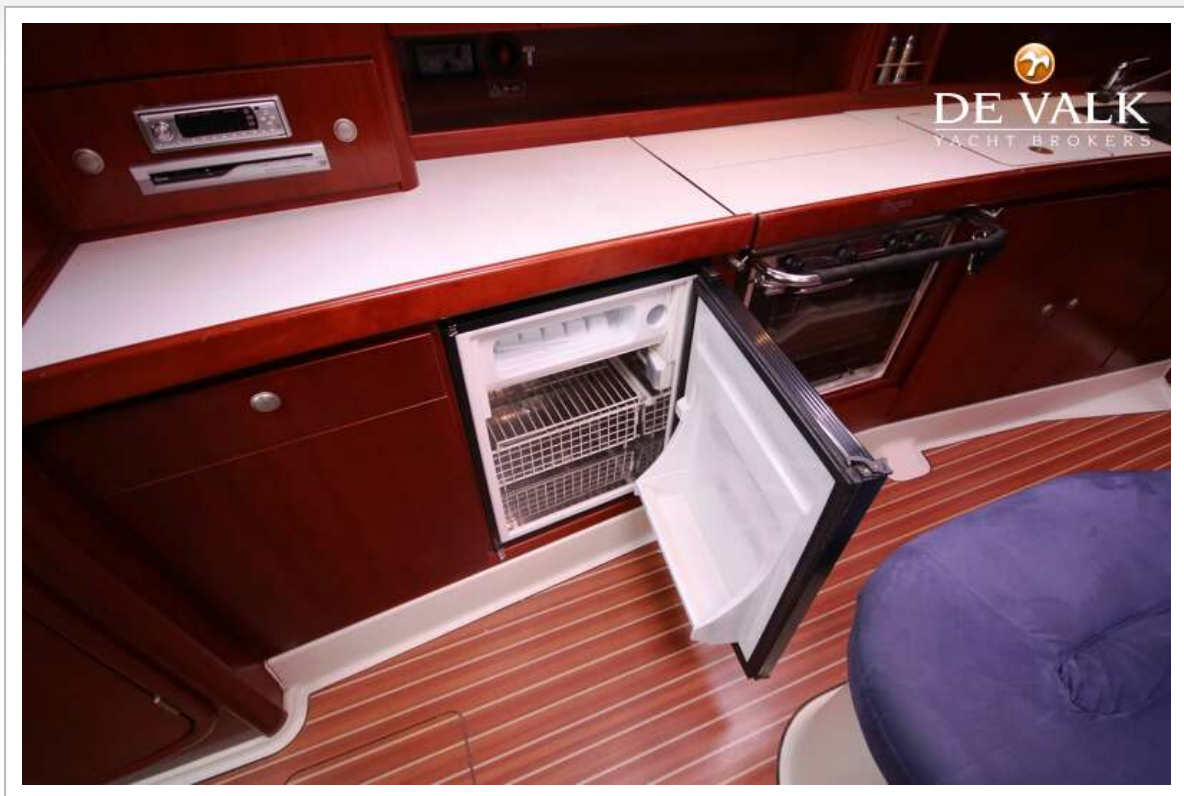
DEHLER 41 CRUISING



DEHLER 41 CRUISING



DEHLER 41 CRUISING



DEHLER 41 CRUISING



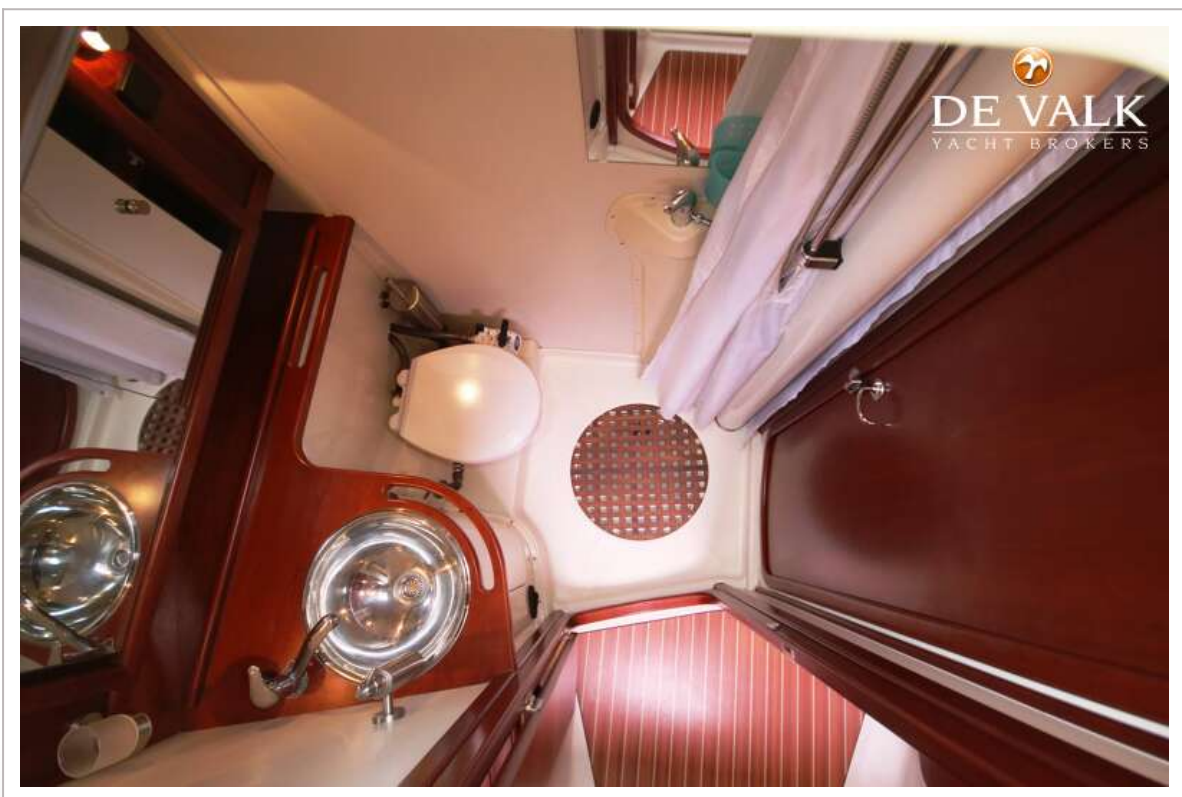
DEHLER 41 CRUISING



DEHLER 41 CRUISING



DEHLER 41 CRUISING



DEHLER 41 CRUISING



DEHLER 41 CRUISING

