



BLOEMSMA PILOT KOTTER

BROKER'S COMMENTS

Bloemsma kotter "Cecile", built at the Bloemsma shipyard in Makkum in 1980. Equipped with a Volvo Penta diesel engine from 2022! Many recent upgrades. Two cabins, two bathrooms and central heating. "Cecile" is currently moored in our sales marina in Katwoude.

Arne Doodeman

SPECIFICATIONS

Dimensions	14.68 x 4.20 x 1.80 (m)	Builder	Jachtwerf Bloemsma
Built	1980	Cabins	2
Material	Steel	Berths	5
Engine(s)	1 x Volvo Penta D7A-B TA diesel	Hp/Kw	174.00 (hp), 128.06 (kw)
Asking price	€ 149.000 (VAT Paid)	Lying	at sales office

CONTACT

Sales office	De Valk Monnickendam B.V.	Telephone	+31 (0)299 65 63 50
Address	Hoogedijk 6 1145 PM Katwoude NL	E-mail	monnickendam@devalk.nl

DISCLAIMER

These particulars are given in good faith as supplied but cannot be guaranteed.



GENERAL

Model	BLOEMSMA PILOT KOTTER
Type	motor yacht
LOA (m)	14,68
Beam (m)	4,20
Draft (m)	1,80
Year built	1980
Builder	Jachtwerf Bloemsma
Country	The Netherlands
Displacement (t)	29
Hull material	steel
Hull colour	blue Hull painted 2025
Hull shape	round-bilged
Keel type	long keel
Superstructure material	steel
Rubbing strake	steel
Deck material	steel
Deck finish	non-skid paint
Superstructure deck finish	teak
Cockpit deck finish	non-skid paint
Antifouling (year)	2025
Window frame	aluminium
Window material	tempered glass
Deckhatch	yes
Portholes	yes
Insulation	yes
Mast can be lowered	manual Both mast can be lowered manually
Fuel tank (litre)	Approx. 2800 litre
Freshwater tank (litre)	Approx. 1100 litre
Blackwater tank (litre)	Approx. 70 litre
Wheel steering	hydraulic Hydraulic power steering



Inside helm position	yes
Outside helm position	yes

ACCOMMODATION

Cabins	2
Berths	5
Interior	teak Classic teak interior
Layout	V-berth in the front, toilet with washbowl, wardrobe with washmachine, dinette, galley, saloon with inside steeringposition, bathroom (shower, washbowl, toilet), owners cabin in the stern with a double and single berth.
Floor	carpet
Aft deck	yes
Saloon	yes
Sliding roof	manual Sliding roof in the saloon
Heating	central heating Planar 14TC mini central heating (2018)
Dinette	yes
Opening door to aft deck	yes
Galley	yes
Countertop	stainless steel
Sink	stainless steel Double stainless steel sink
Cooker	calor gas Two burner cooker
Microwave	Sharp
Fridge	Isothemp CR130L with freezing compartment. (2019)
Hot water system	Isothemp boiler and Ariston boiler (2018)
Water pressure system	electrical Par-Max pump
Owners cabin	double bed + single bed Owners cabin in the stern.
Wardrobe	hanging/drawers/shelves
Bathroom	separate
Toilet	(2018)
Toilet system	electric
Wash basin	yes



Shower	yes
Guest cabin 1	v-bed
Wardrobe	shelves
Toilet	(2018)
Toilet system	electric
Wash basin	at the toilet
Washing machine	One Concept washing machine with spin dryer.

MACHINERY

No of engines	1
Make	Volvo Penta
Type	D7A-B TA
HP	174
kW	128.06
Fuel	diesel
Year installed	2022
Engine hours	820
Engine cooling system	freshwater heat exchanger
Drive	shaft
Engine controls	bowden cable Morse
Gearbox	ZF 280-1 (2022)
Bowthruster	electric
Exhaust	watercooled
Propeller type	fixed
Propeller blades	4 bladed propeller
Shaft lubrication	oilbath
Electric bilge pump	yes
Generator	Paguro 3SY 3000W (2018)
Start battery	2 x 225ah (07-2025)
Service battery	2 x 140ah (07-2025)
Generator battery	44AH (07-2025)



Battery monitor	Victron battery monitor BM-1
Battery charger	Victron Centaur 24/60
Inverter	Captok 2500w inverter
Solar panel	Victron Blue Solar 150/7 without solar panel
Shorepower	with cable

NAVIGATION

Compass	Silva liquid compass
Depth sounder/log	Raymarine MN100-2
Windset	Raymarine MN100-2
VHF	Icom IC-M330
Autopilot	Raymarine (2018)
Rudder angle indicator	Wema
AIS transceiver	EM-Trak B400 AIS Class B
Radio receiver	Kodon automatic direction finder KS511 (function unknown)
Navigation lights	yes
Loudhailer	yes

EQUIPMENT

Sprayhood	(2020)
Cockpit cover	(2020)
Cockpit table	Teak table on the aft deck
Cockpit chairs	yes
Anchor	Hall 50KG galvanized anchor
Anchor chain	150m, 10mm galvanized anchor chain
Windlass	electrical Lofrance Tigres (2022)
Outboard support	Stainless steel/wooden outboard support on the railing.
Davits	stainless steel
Davits controls	manual
Sea railing	wire
Railing side opening gates	yes



Wiper	yes
Clearview window	yes
Horn	yes
Fenders	yes
Mooring lines	yes
Clock - barometer	Wempe clock and barometer. Hygrometer from another brand.

RIGGING

Rigging	ketch-cutter
Standing rigging	wire
Material mast	aluminium
Mast lowering system	Manual
Mainsail	yes
Mizzen	yes
Genoa	yes
Genoa furler	Facnor Flatdeck (2020)
Extra info	Winches: 1 x Lewmar 40, 2 x Lewmar 46, 1 x Barton, 1 x Barlow 23, 1 x Gibb



BLOEMSMA PILOT KOTTER

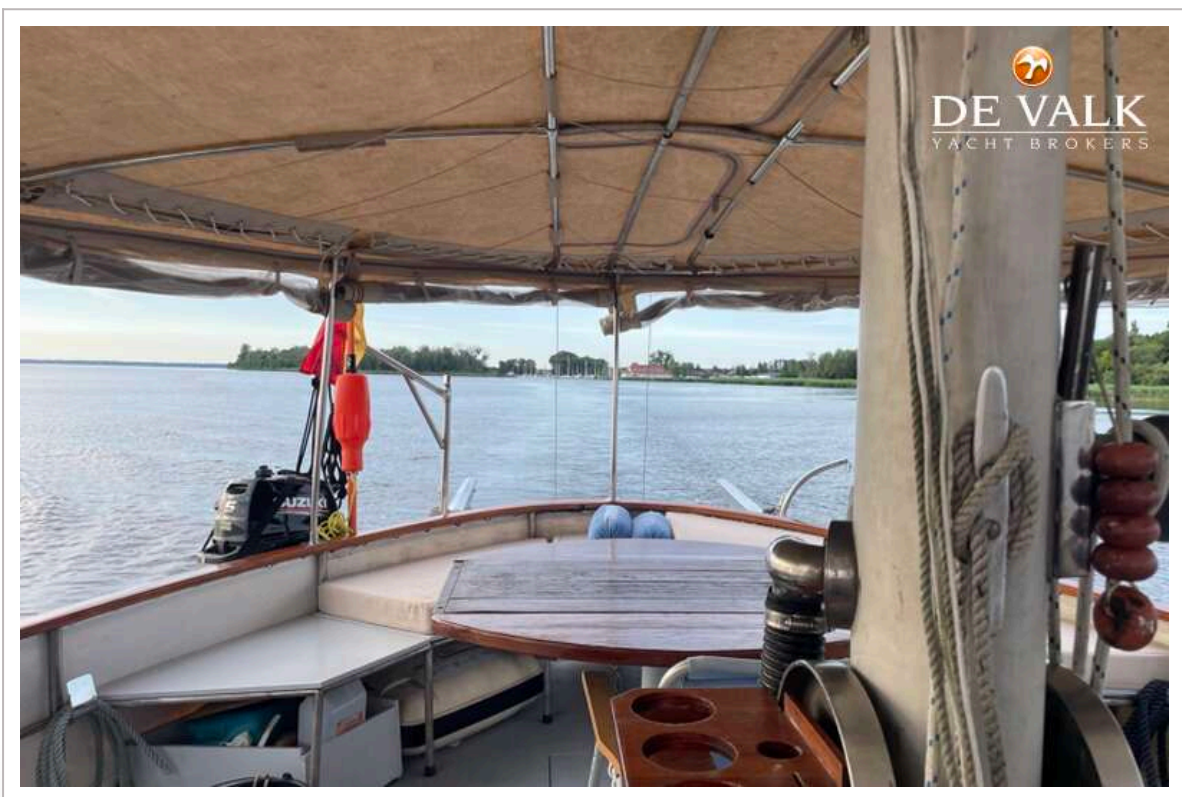
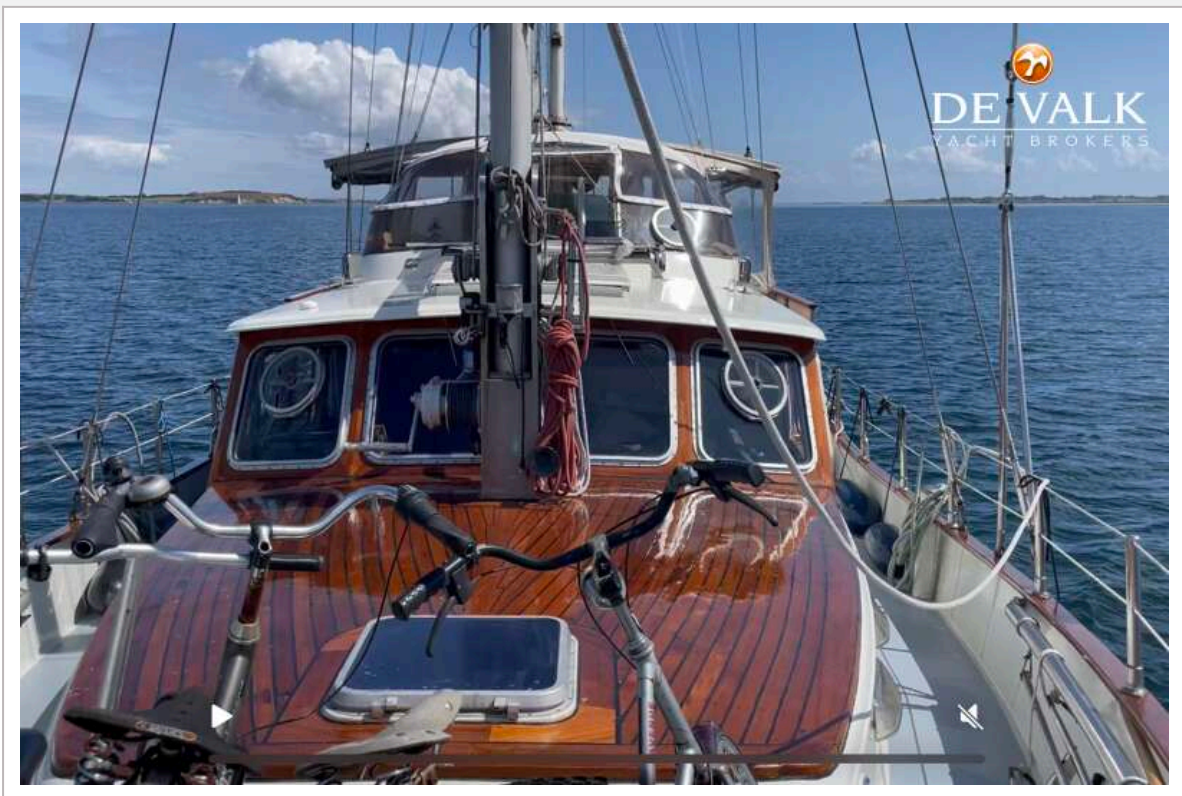


BLOEMSMA PILOT KOTTER



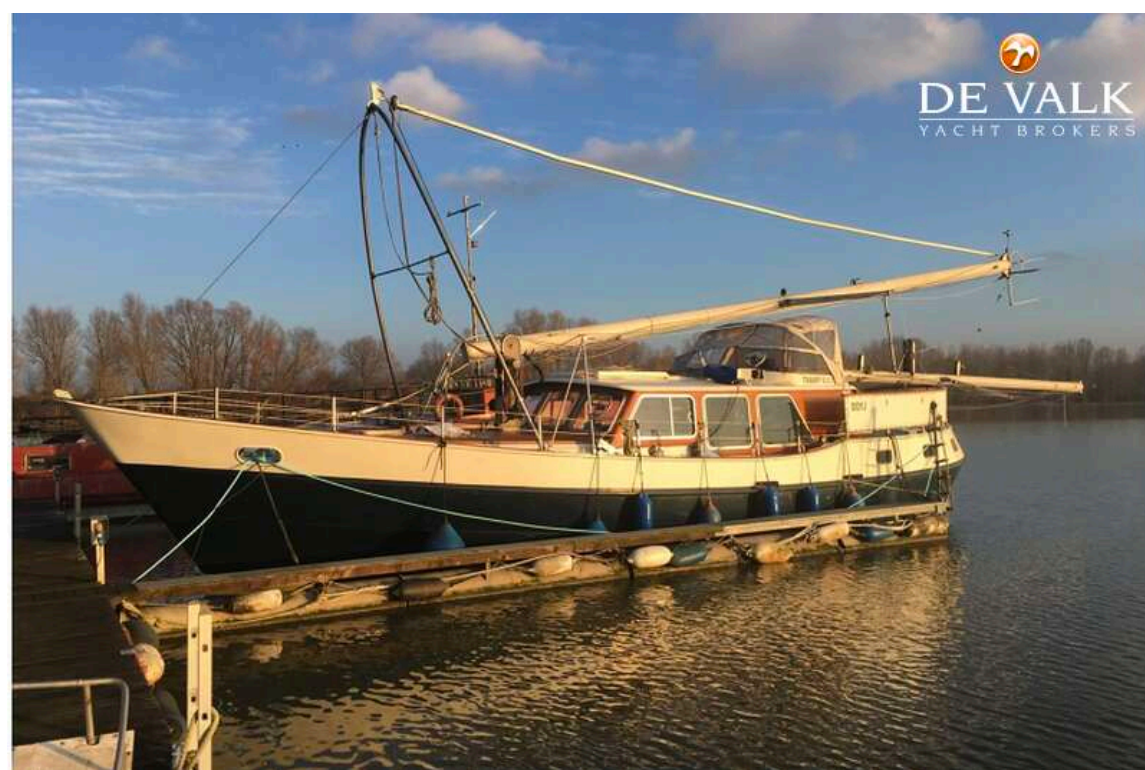


BLOEMSMA PILOT KOTTER





BLOEMSMA PILOT KOTTER



BLOEMSMA PILOT KOTTER



BLOEMSMA PILOT KOTTER



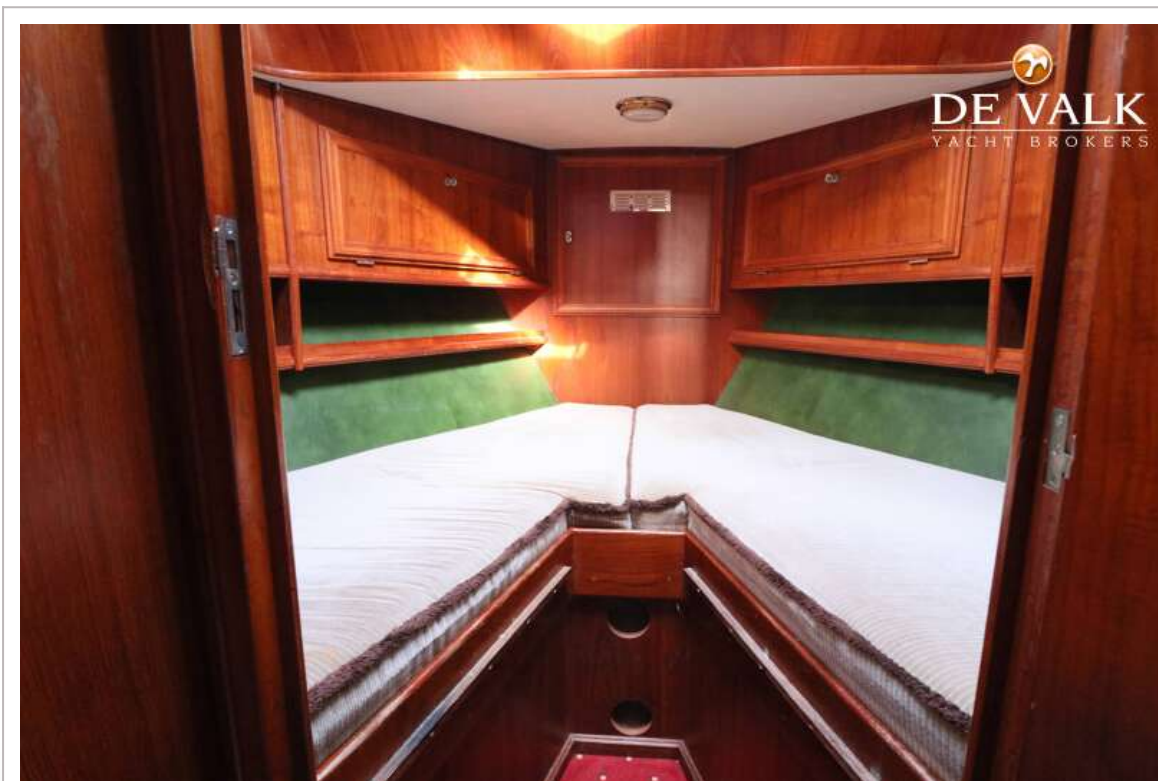
BLOEMSMA PILOT KOTTER



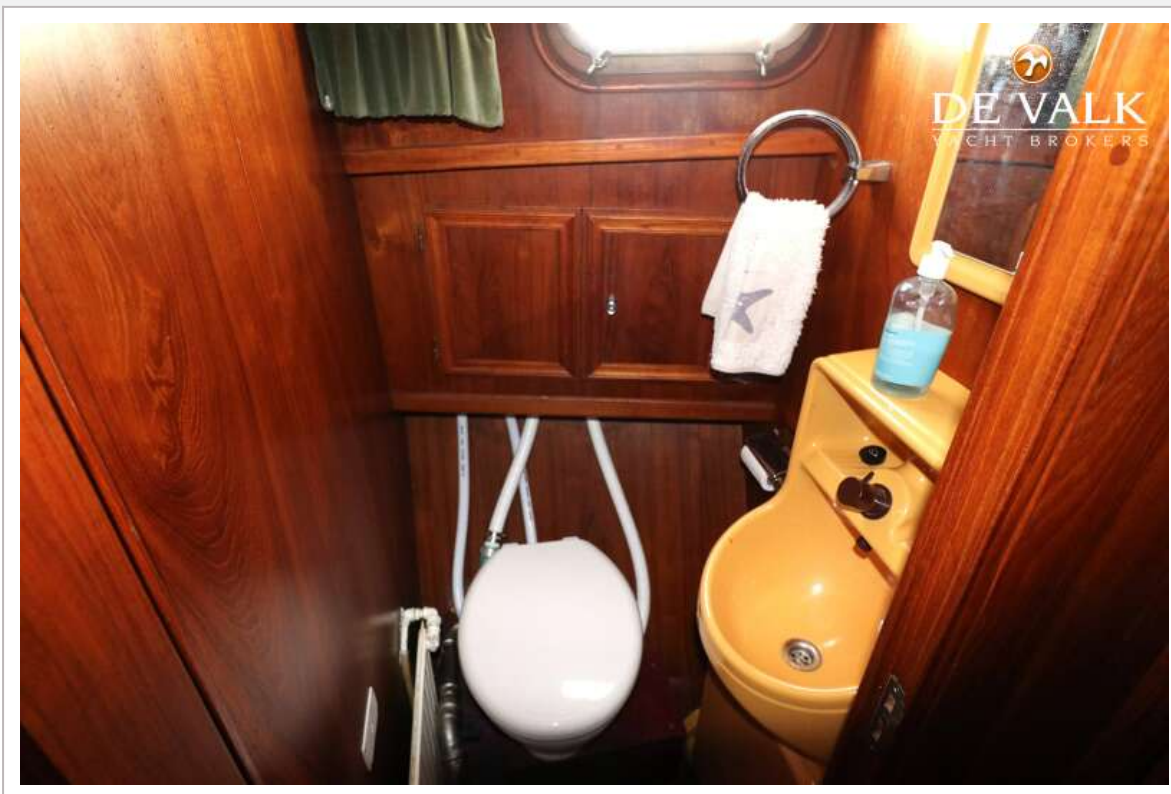
BLOEMSMA PILOT KOTTER



BLOEMSMA PILOT KOTTER



BLOEMSMA PILOT KOTTER

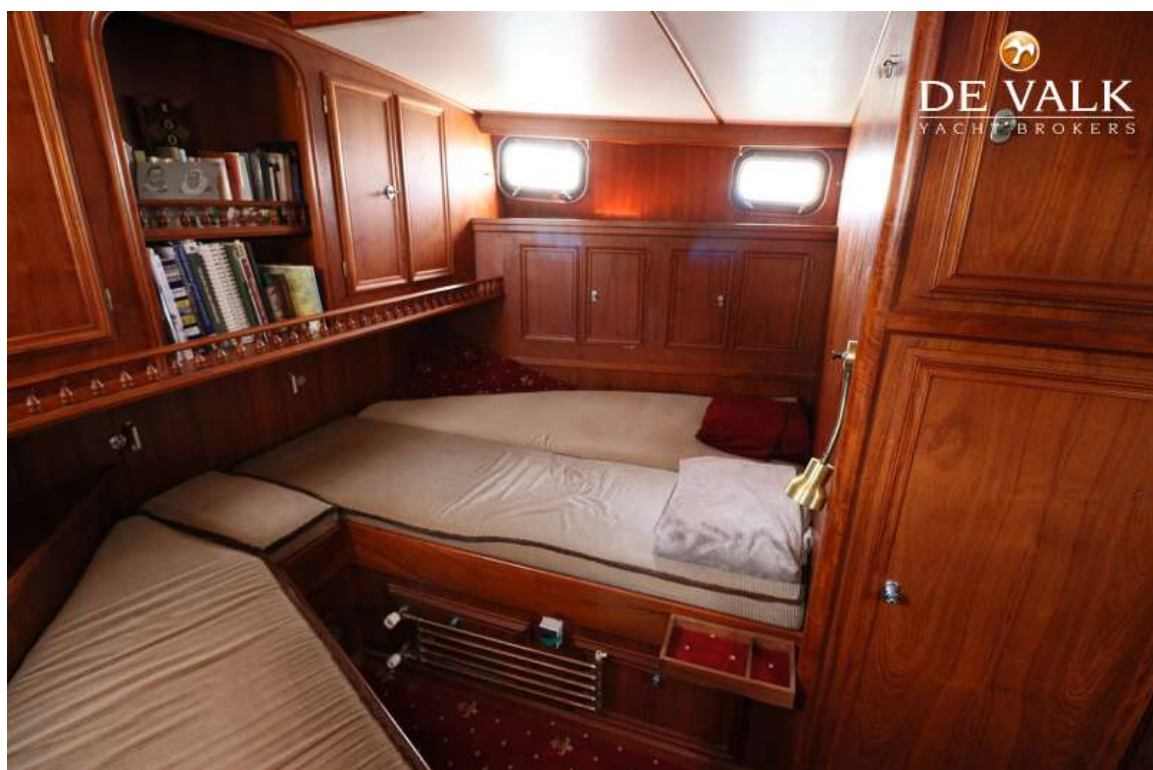


BLOEMSMA PILOT KOTTER





BLOEMSMA PILOT KOTTER



BLOEMSMA PILOT KOTTER





