



DE VALK
YACHT BROKERS



EXPLORER NORTH SEA TRAWLER 1800



DE VALK
YACHT BROKERS

EXPLORER NORTH SEA TRAWLER 1800

BROKER'S COMMENTS

"Engelina" is a sturdy, versatile and proven sea-going vessel, safe, comfortable and equipped with all modern conveniences like at home. Completely rebuilt from 2003 > 2008, a true eye-catcher in every port, both in the north as well as in the Med. Enjoy her as a liveaboard or sail open blue waters. She accommodate up to 6 and is equipped with all the comforts and luxury you are used to at home. She features lots of deck space, an elegant interior beautiful finished with cherry and teak, double glazing, central heating, a hydraulic bow thruster and a reliable powerful Scania engine.

Harald Padberg

SPECIFICATIONS

| | | | |
|---------------------|-------------------------|----------------|--|
| Dimensions | 18.00 x 5.05 x 2.60 (m) | Builder | Klop Coevorden-Pisano Wijk bij Duurstede |
| Built | 1949 | Cabins | 4 |
| Material | Steel | Berths | 6 |
| Engine(s) | 1 x Scania DS11 diesel | Hp/Kw | 283.00 (hp), 208.01 (kw) |
| Asking price | sold (VAT) | Lying | contact Monnickendam |

CONTACT

| | | | |
|---------------------|---------------------------------------|------------------|------------------------|
| Sales office | De Valk Monnickendam B.V. | Telephone | +31 (0)299 65 63 50 |
| Address | Hoogedijk 6 1145 PM Katwoude NL | E-mail | monnickendam@devalk.nl |

DISCLAIMER

These particulars are given in good faith as supplied but cannot be guaranteed.



EXPLORER NORTH SEA TRAWLER 1800

GENERAL

| | |
|---------------------------|--|
| Model | EXPLORER NORTH SEA TRAWLER 1800 |
| Type | motor yacht |
| LOA (m) | 18,00 |
| Beam (m) | 5,05 |
| Draft (m) | 2,60 |
| Air draft (m) | 7,00 |
| Air draft min (m) | 6,80 |
| Headroom (m) | 2,00 |
| Year built | 1949 |
| Launched | Engelina is a former Dutch fishing vessel, completely rebuilt and converted from 2003 to 2008 into a sturdy, luxury yacht. Over the years her owner sailed the Scandinavian waters to explore the Baltic Sea and visit Sweden, Finland, Norway and Denmark. Trips to The U.K. and Channel Islands and the French coast were made as well. Naturally, the Dutch rivers and inland lakes were also explored. |
| Builder | Klop Coevorden-Pisano Wijk bij Duurstede |
| Country | The Netherlands |
| Displacement (t) | 100 |
| Ballast (tonnes) | cast iron |
| CE norm | NA |
| Hull material | steel |
| Hull colour | yes |
| Hull thickness (mm) | 7 mm |
| Hull shape | round-bilged |
| Keel type | bilge keels |
| Bilge keels | yes |
| Superstructure material | steel |
| Superstructure (mm) | 6 mm |
| Deck plate thickness (mm) | 6 mm |
| Rubbing strake | steel + rubber |
| Deck material | steel |



EXPLORER NORTH SEA TRAWLER 1800

| | |
|------------------------------|--|
| Deck finish | non-skid paint & teak |
| Superstructure deck finish | paint |
| Cockpit deck finish | yes |
| Antifouling (year) | 2021 |
| Dorades | 6 X |
| Window frame | aluminium |
| Window material | double glazing |
| Deckhatch | 4 X storage in superstructure front deck |
| Portholes | aluminium |
| Insulation | rockwool |
| Flybridge | yes |
| Flybridge suncover | yes |
| Radar arch | non collapsible |
| Fuel tank (litre) | steel 3500 L |
| Fuel tank 2 (litre) | steel 3500 L |
| Level indicator (fuel tank) | yes |
| Fuel daytank (litre) | steel 200 L. |
| Level indicator (daytank) | yes |
| Freshwater tank (litre) | steel 3000 L |
| Level indicator (freshwater) | yes |
| Blackwater tank (litre) | stainless steel 450 L |
| Level indicator (blackwater) | yes |
| Blackwater tank extraction | deck extraction + pump |
| Greywater tank (litre) | yes |
| Inside helm position | hydraulic |
| Flybridge helm position | with remote control |
| Emergency tiller | yes |
| More info on hull | Engelina is CVO/CBB certified in 2018 (EU certificate for inland navigation) |

ACCOMMODATION



EXPLORER NORTH SEA TRAWLER 1800

| | |
|---------------------------------|--|
| Cabins | 4 |
| Berths | 6 |
| Interior | cherry + teak |
| Layout | <p>From the aft deck you enter the cozy aft salon with an electric fireplace and TV. The stairs at SB side descend to the spacious owner's cabin with ensuite bathroom including shower, toilet and sink. In this cabin also an ample amount of storage and closet space. Back upstairs you step, towards the front of the ship into the second salon with a spacious longitudinal bench at SB and the kitchen at BB which is equipped with all conveniences. The steering position is situated in front of this salon with doors to the outside at BB and SB. Next to the steering position at SB you can reach the lower deck via a staircase. Here you turn left to the engine room where you passes the shower room at BB and toilet at SB. Towards the bow section you'll find at BB and SB the 2 cabins with a single bed. In the front a guest cabin with ample closet space and a freestanding double bed.</p> |
| Floor | parquet |
| Aft deck | yes |
| Saloon | yes |
| Headroom saloon (m) | 2.00 M. |
| Heating | central heating Roca Gavino Comfort |
| Navigation center | yes |
| Chart table | at portside |
| Dinette | 1 x aft deck + 1 x aft salon + 1 x SB at galley |
| Opening door to aft deck | yes |
| Galley | U-shaped with ample storage space |
| Countertop | Duropol |
| Sink | stainless steel |
| Cooker | induction Siemens |
| Extractor | yes |
| Microwave/oven combi | Whirlpool |
| Fridge | 2 X |
| Freezer | 1 X |
| Hot water system | on central heating |



EXPLORER NORTH SEA TRAWLER 1800

| | |
|-----------------------|-------------------------|
| Water pressure system | electrical |
| Dishwasher | Bauknecht |
| Kettle | yes |
| Coffee maker | yes |
| Crockery | yes |
| Owners cabin | French bed |
| Bed length (m) | 2.00 M. |
| Wardrobe | hanging/drawers/shelves |
| Bathroom | en suite |
| Toilet | en suite |
| Toilet system | electric |
| Wash basin | in the bathroom |
| Shower | en suite |
| Guest cabin 1 | French bed |
| Bed length (m) | 2.00 M. |
| Wardrobe | yes |
| Bathroom | shared |
| Toilet | shared |
| Toilet system | electric |
| Wash basin | at the toilet |
| Shower | shared |
| Guest cabin 2 | single bed |
| Bed length (m) | 2.00 M. |
| Wardrobe | yes |
| Bathroom | yes |
| Guest cabin 3 | single bed |
| Bed length (m) | 2.00 M. |
| Wardrobe | yes |
| Washing machine | Electrolux |
| Sky lounge | yes |



EXPLORER NORTH SEA TRAWLER 1800

Flybridge

..... the place to be on nice summer days. You and you family enjoy a fantastic 360° view seated on the spacious and thoughtfully positioned settees with cushions.

Extra info

LED lighting in all living areas.

MACHINERY

| | |
|--------------------------|-----------------------------|
| No of engines | 1 |
| Make | Scania |
| Type | DS11 |
| HP | 283 |
| kW | 208.01 |
| Fuel | diesel |
| Year installed | 1996 |
| Maximum speed (kn) | 9 kn. |
| Cruising speed (kn) | 7,2 kn. |
| Consumption (l/hr) | 13 |
| Range (nm) | 3300 |
| Engine cooling system | closed keelcooling |
| Drive | shaft |
| Shaft seal | yes |
| Engine controls | yes |
| Gearbox | hydraulic |
| Bowthruster | hydraulic |
| Exhaust | yes |
| Propeller type | fixed |
| Propeller blades | 4 |
| Propeller shaft material | steel |
| Shaft lubrication | grease |
| Electric bilge pump | yes |
| Bilge alarm | yes |
| Electrical installation | 24V / 230V |
| Generator | dry exhaust 27 KvA - Lister |



EXPLORER NORTH SEA TRAWLER 1800

| | |
|--------------------------|---|
| Start battery | 2 x 12V - new in 2021 |
| Service battery | 1.000 Ah / 24V - (2013) |
| Generator battery | 1 x 12V |
| Windlass battery | 1 X 12V |
| Battery monitor | yes |
| Battery charger/inverter | Victron Quattro 24/5000/120 |
| Solar panel | Victron + MPPT 100/30 & MPPT 150/35 SmartSolar |
| Diode battery combiners | yes |
| Shorepower | yes |
| Insulation transformer | yes |
| Extra info | The engine room is accessible via the stairs on SB side next to the steering position. The engine is covered and very well insulated. There is plenty of room to move around and headroom because of the dimensions of this technical area. |
| Extra info | The Netherlands is not known for its many hours of sunshine. Equally, the power shore connection is not necessary from March to October thanks to the solar panels. |

NAVIGATION

| | |
|------------------------|-----------------------|
| Compass | Satellite via plotter |
| Depth sounder | via plotter |
| Log | via plotter |
| VHF | 3 X - Furuno RB-2721 |
| VHF handheld | 1 X - Cobra Marine |
| Autopilot | Furuno NavPilot |
| Rudder angle indicator | yes |
| Radar | Furuno |
| Plotter/GPS | Furuno NavNet 3D |
| Navtex | Furuno |
| Electronic chart(s) | yes |
| AIS receiver | EM Track A100 |
| AIS transponder | EM Track A100 |



EXPLORER NORTH SEA TRAWLER 1800

| | |
|-------------------|-----|
| AIS transceiver | yes |
| Navigation lights | yes |
| Searchlight | yes |

EQUIPMENT

| | |
|----------------------------|--------------------------------|
| Cockpit cover | as aft deck closure |
| Sun awning | over flybridge |
| Cockpit cushions | yes |
| Cockpit table | Teak |
| Boarding ladder | aluminum |
| Gangway | yes |
| Anchor | Pool 128 KG |
| Anchor chain | 100 M. |
| Anchor 2 | Pool 128 KG |
| Anchor chain | 80 M. |
| Other ground tackle | 20 KG anchor |
| Windlass | hydraulic |
| Capstan | 1 x anchor + 2 x rear bollards |
| Deck wash | yes |
| Deck crane | electric |
| Sea railing | steel |
| Grab rail (superstructure) | steel |
| Railing side opening gates | PS & SB |
| Life raft | container Lalizas |
| Life raft (pers) | 6 |
| Last life raft survey | 2020 |
| Lifejackets | 6 X |
| Safety harness | 2 X |
| Lifebuoy | 2 X |
| Danbuoy | 1 X |
| Wiper | 3 X |



EXPLORER NORTH SEA TRAWLER 1800

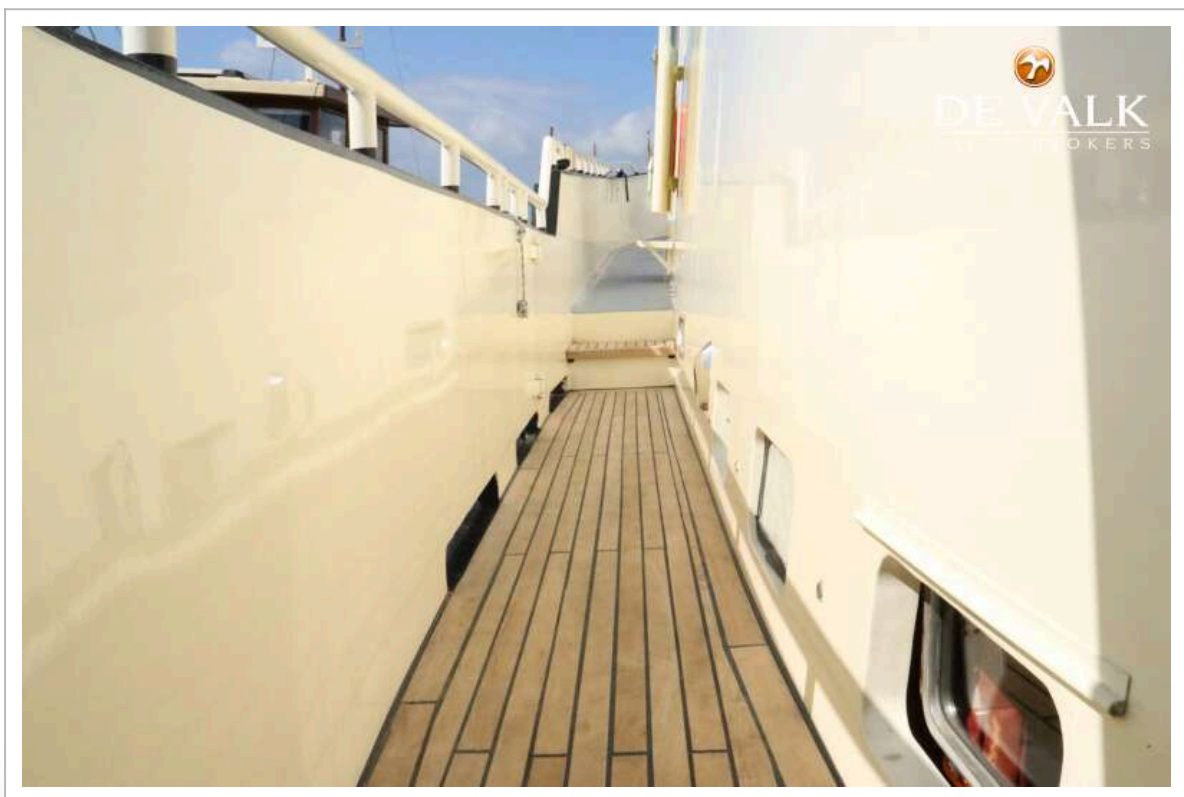
| | |
|-----------------------------|--------------|
| Horn | air pressure |
| Fenders | yes |
| Mooring lines | yes |
| Spare parts | yes |
| Tools | yes |
| TV | yes |
| Radio-cd player | Caliber |
| Speakers in salon | yes |
| Clock - barometer | yes |
| Fire extinguisher | yes |
| Latest extinguisher survey | yes |
| Extinguisher in engine room | yes |



EXPLORER NORTH SEA TRAWLER 1800



EXPLORER NORTH SEA TRAWLER 1800



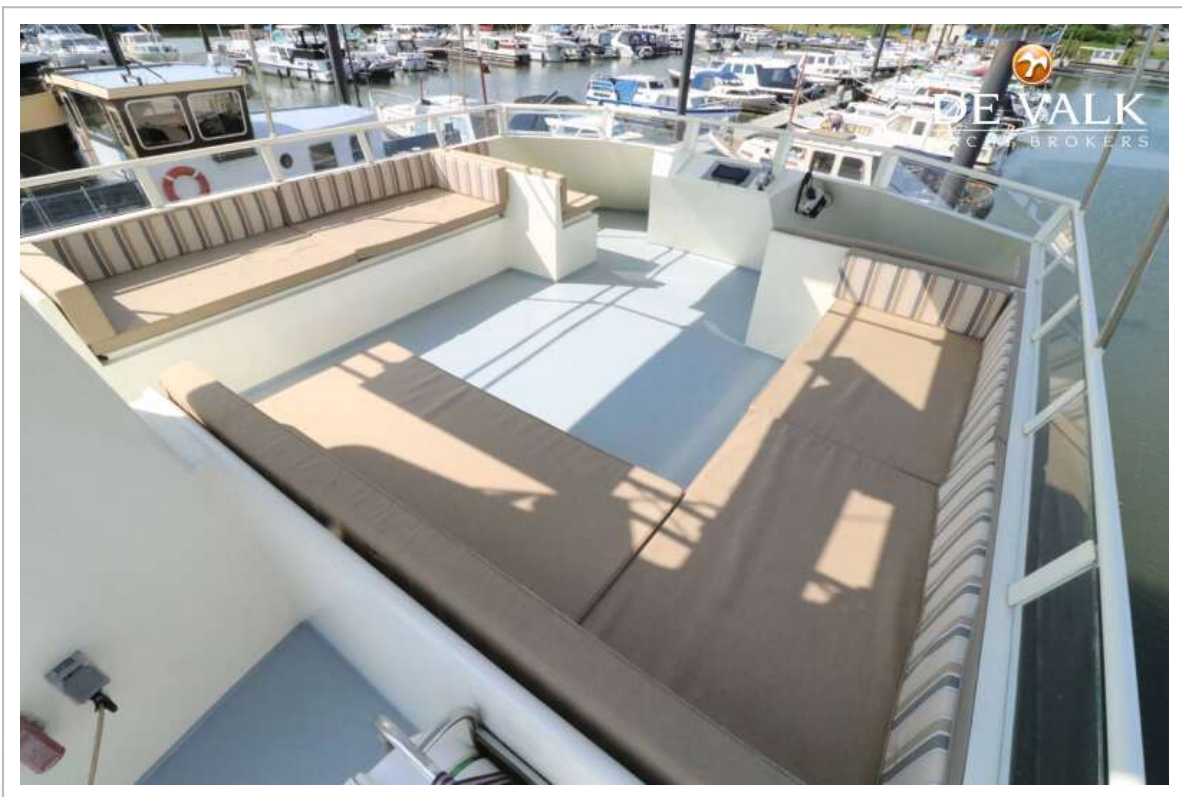
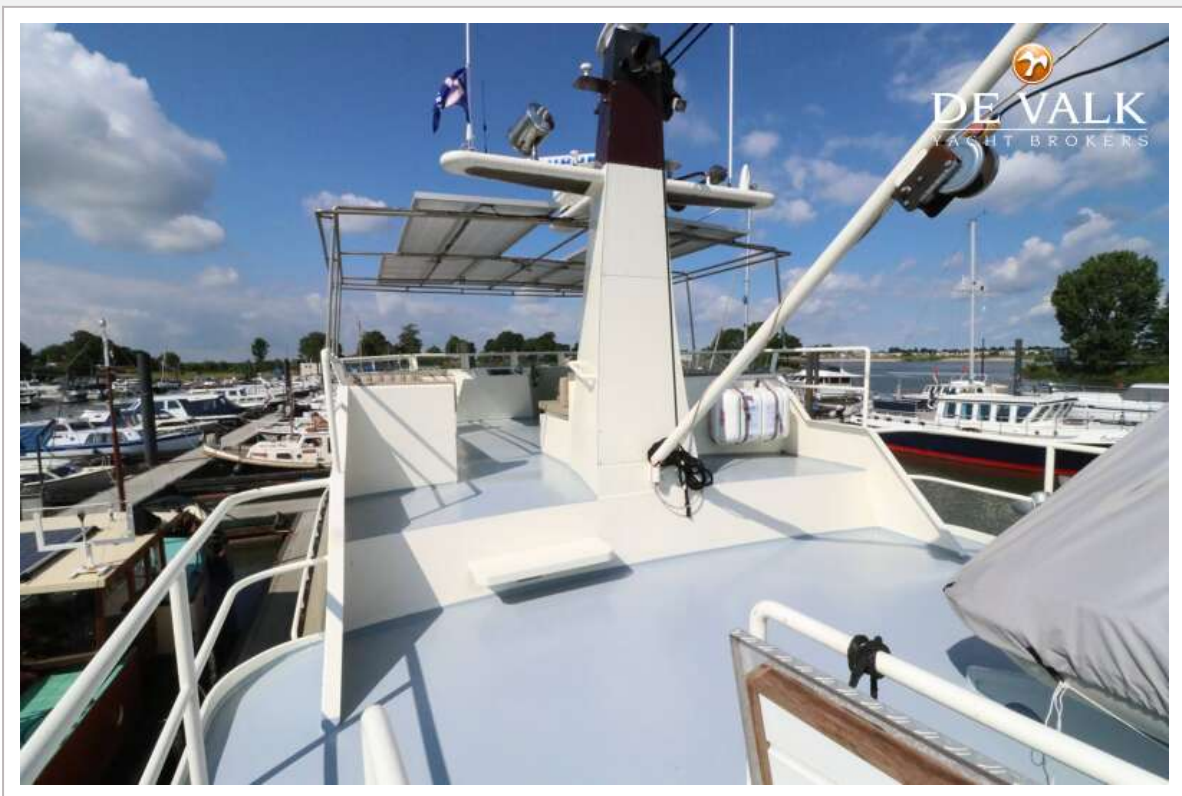
EXPLORER NORTH SEA TRAWLER 1800



EXPLORER NORTH SEA TRAWLER 1800



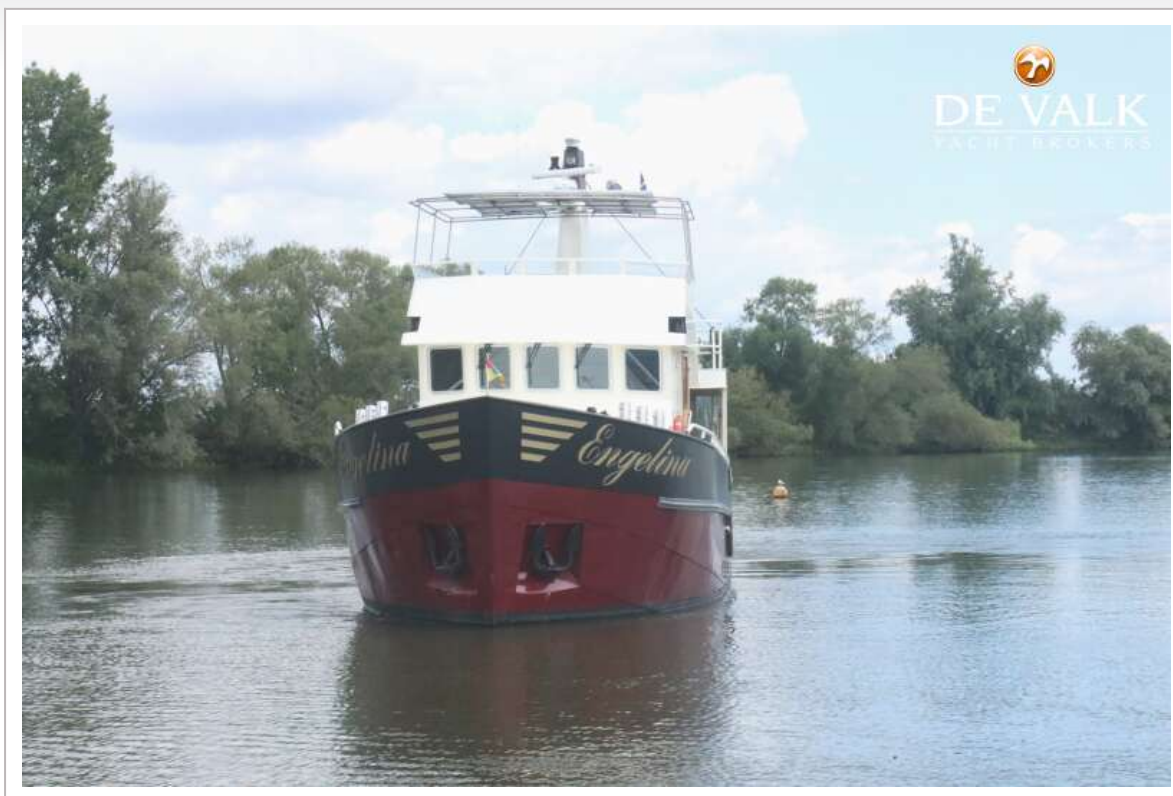
EXPLORER NORTH SEA TRAWLER 1800



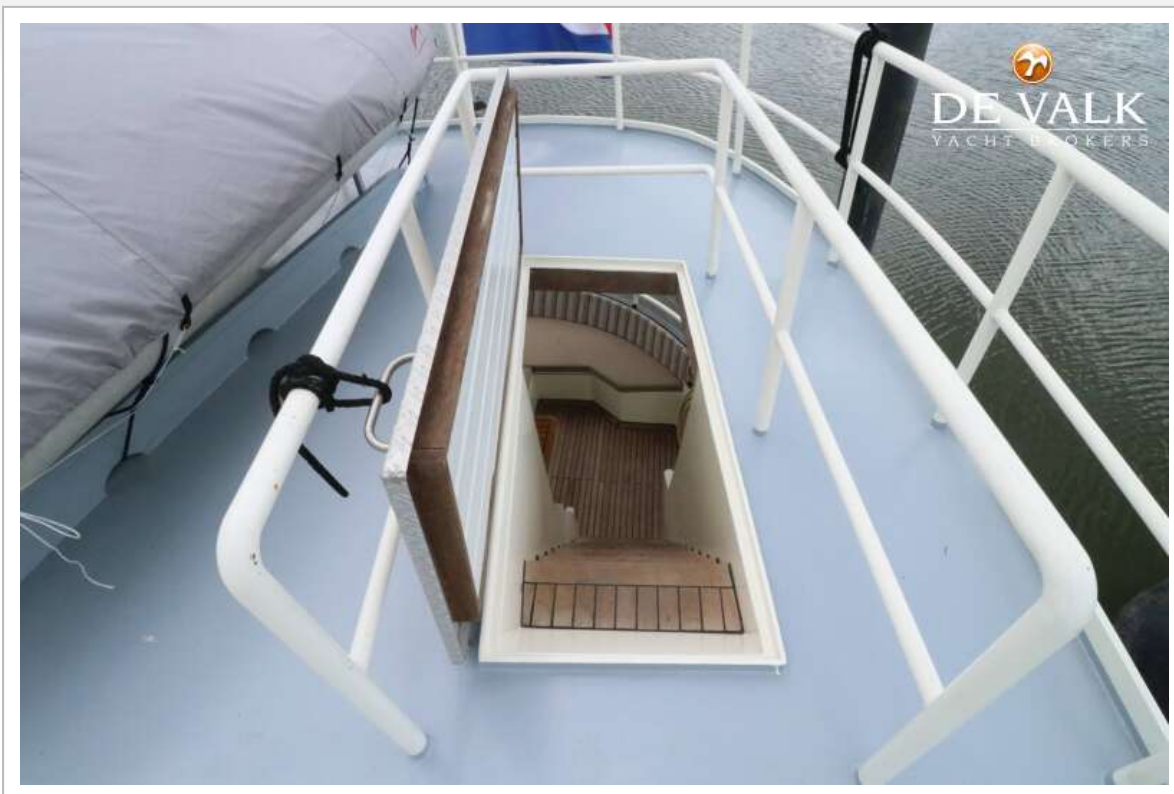
EXPLORER NORTH SEA TRAWLER 1800



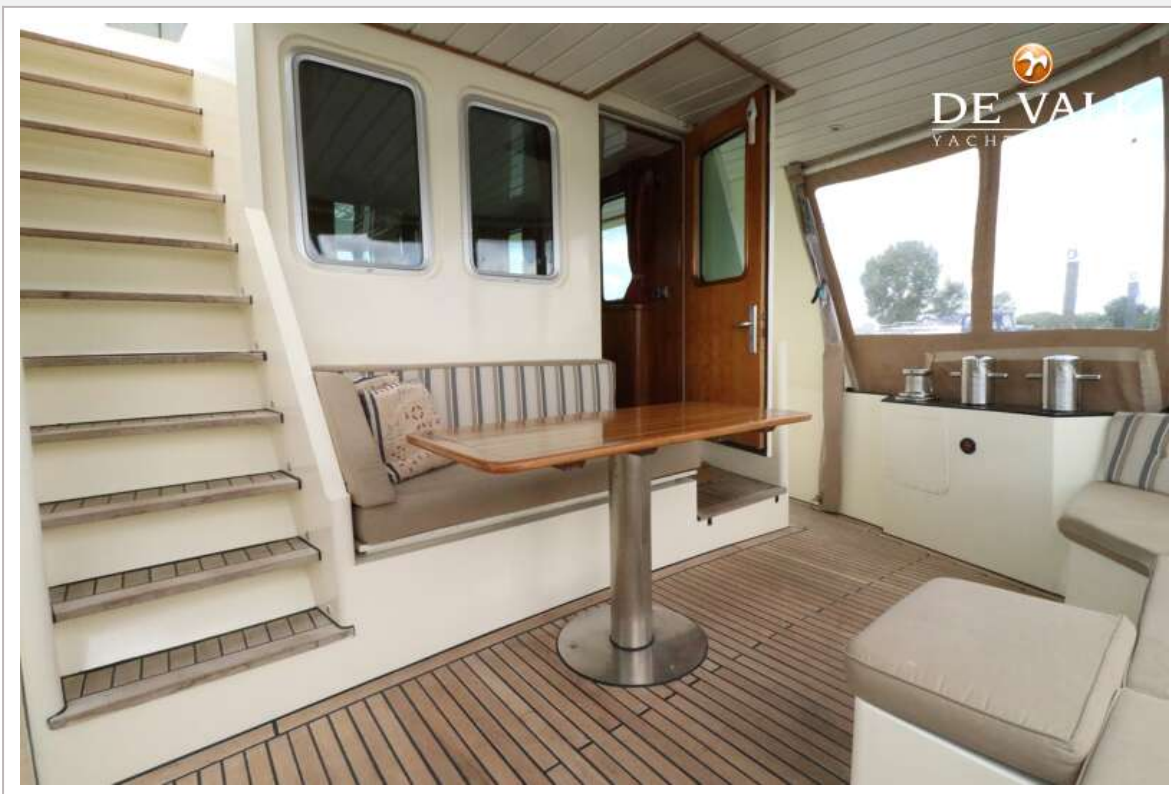
EXPLORER NORTH SEA TRAWLER 1800



EXPLORER NORTH SEA TRAWLER 1800



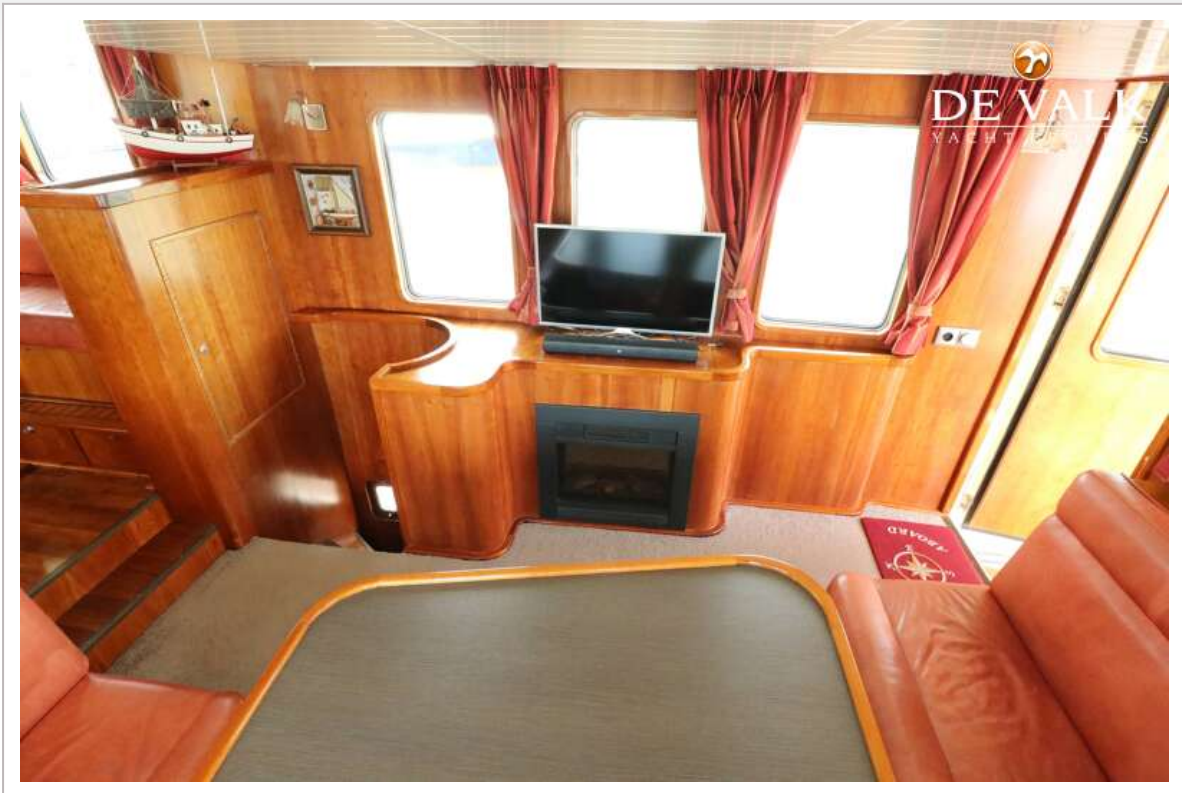
EXPLORER NORTH SEA TRAWLER 1800



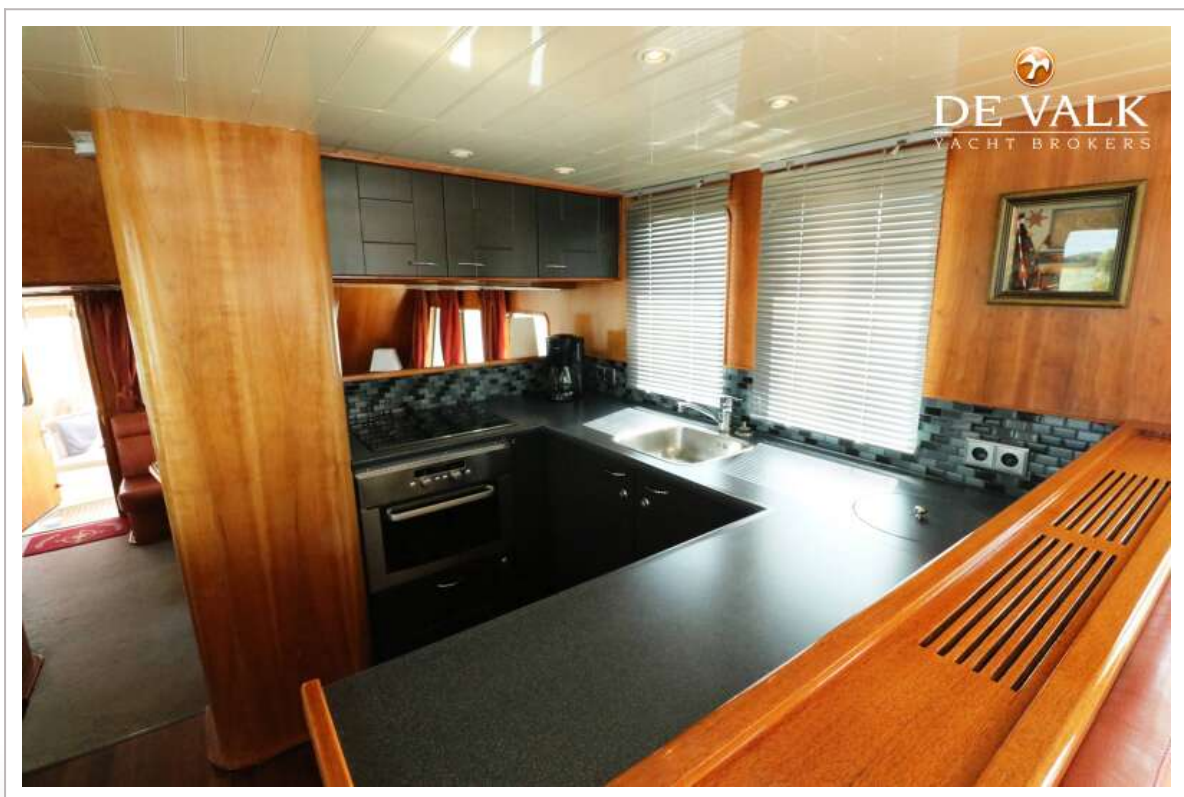
EXPLORER NORTH SEA TRAWLER 1800



EXPLORER NORTH SEA TRAWLER 1800



EXPLORER NORTH SEA TRAWLER 1800



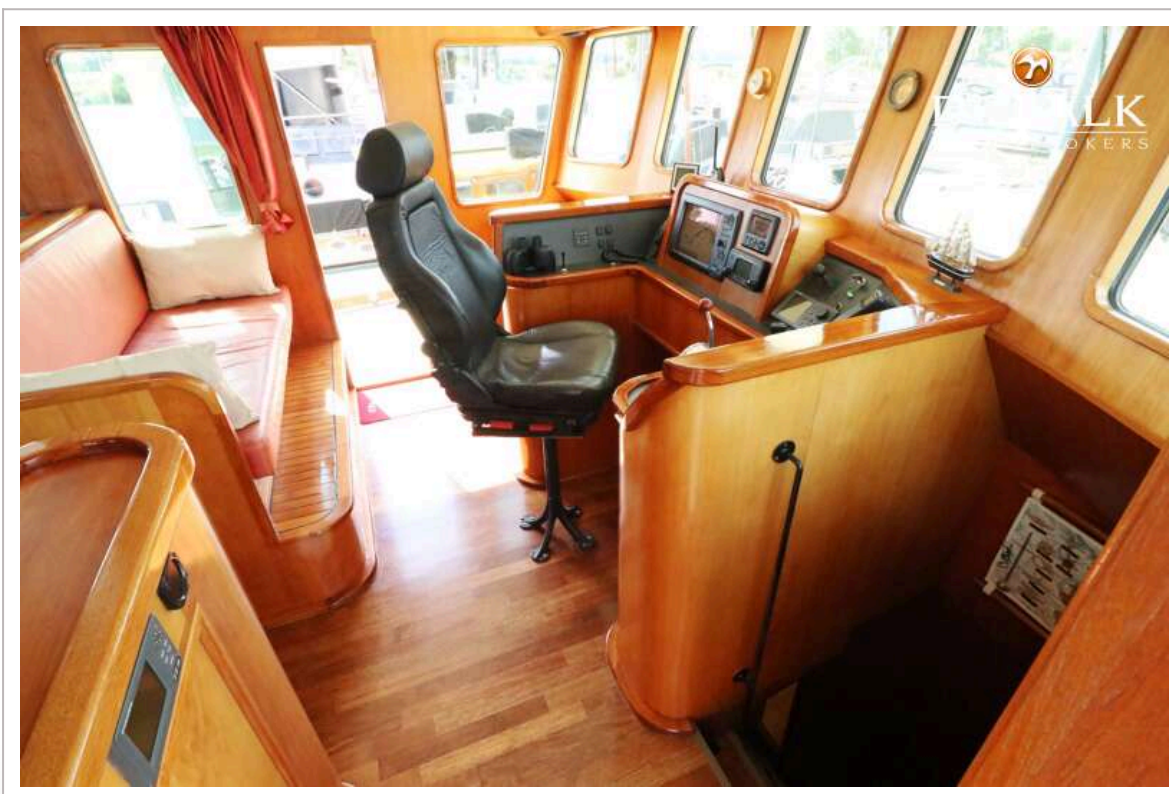
EXPLORER NORTH SEA TRAWLER 1800



EXPLORER NORTH SEA TRAWLER 1800



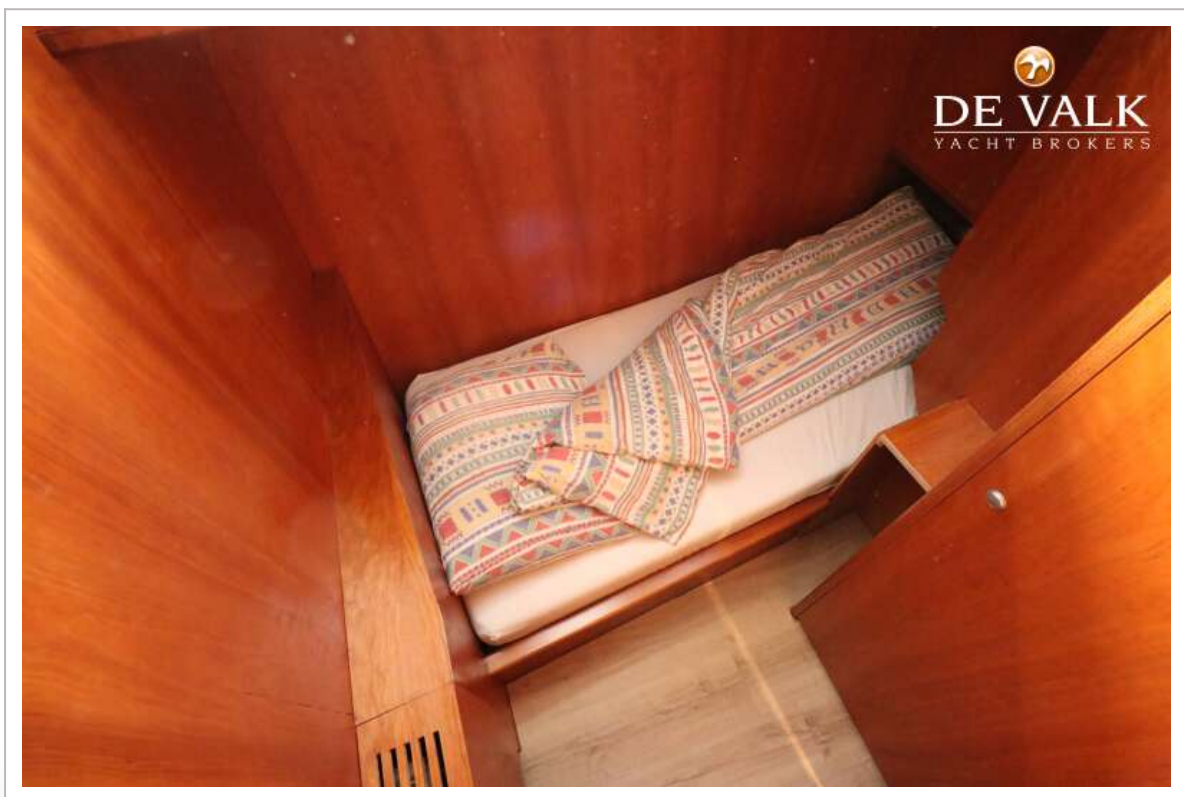
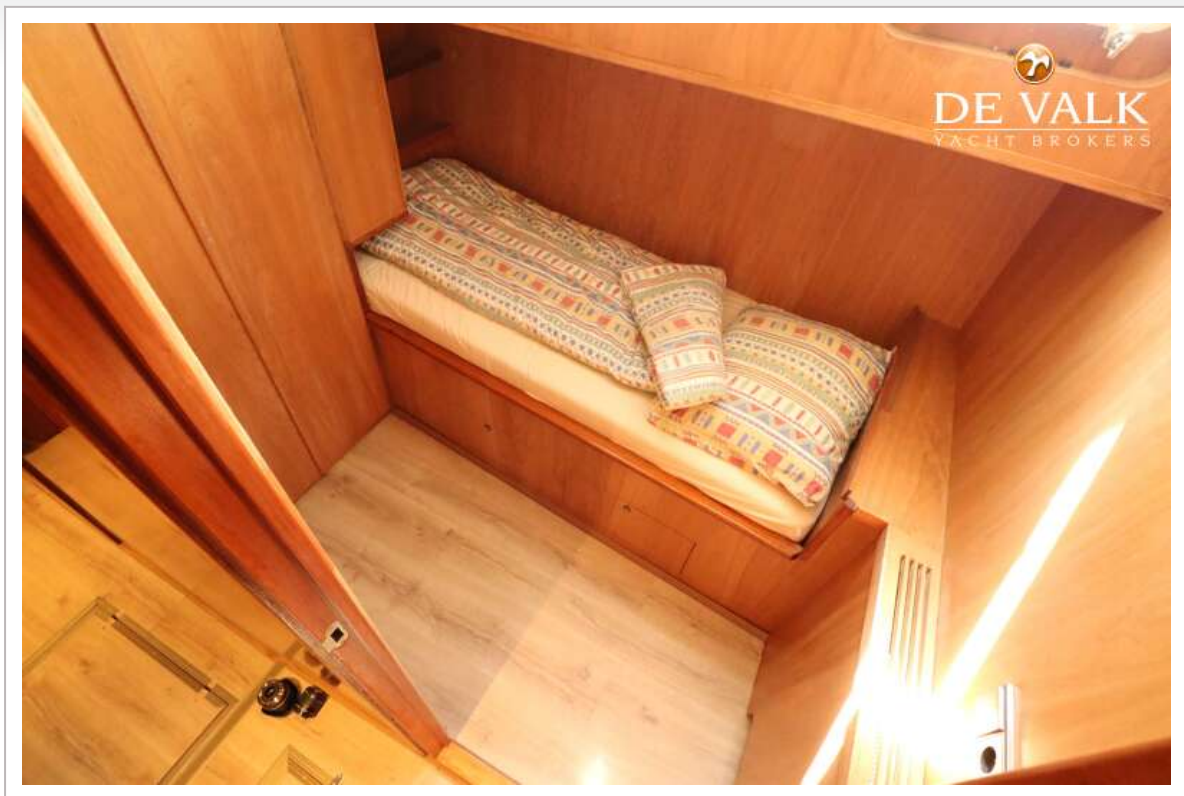
EXPLORER NORTH SEA TRAWLER 1800



EXPLORER NORTH SEA TRAWLER 1800



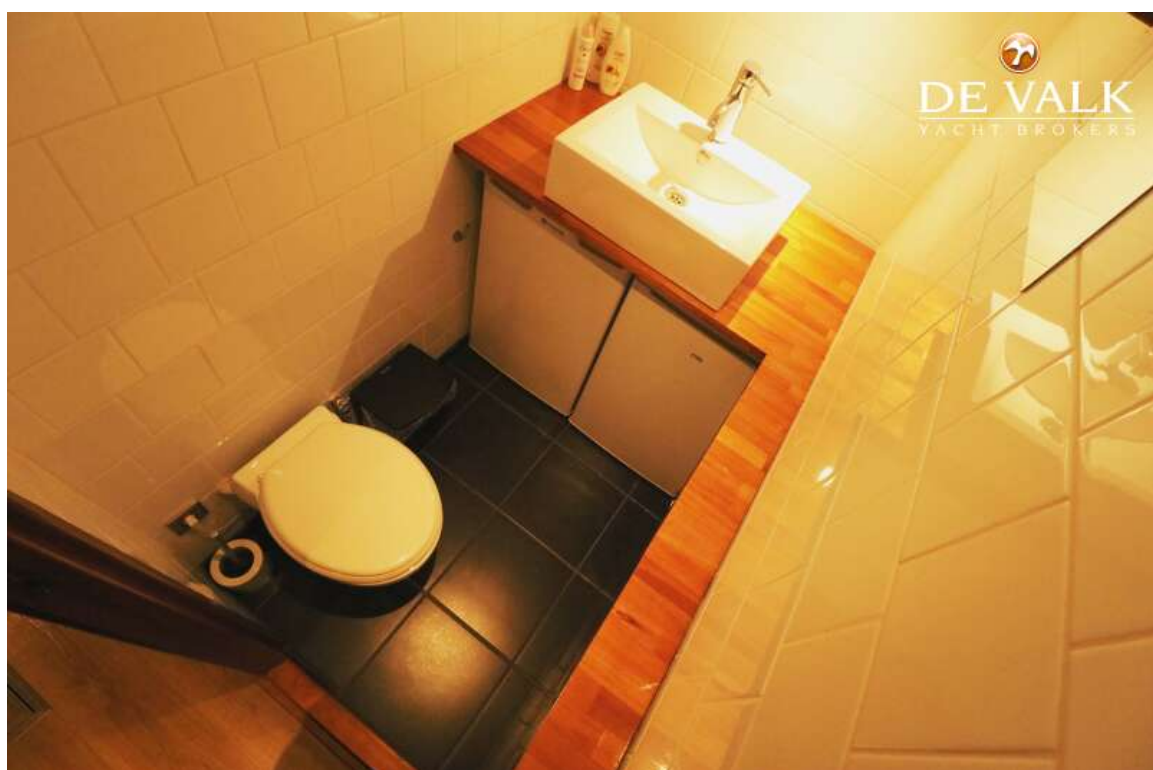
EXPLORER NORTH SEA TRAWLER 1800



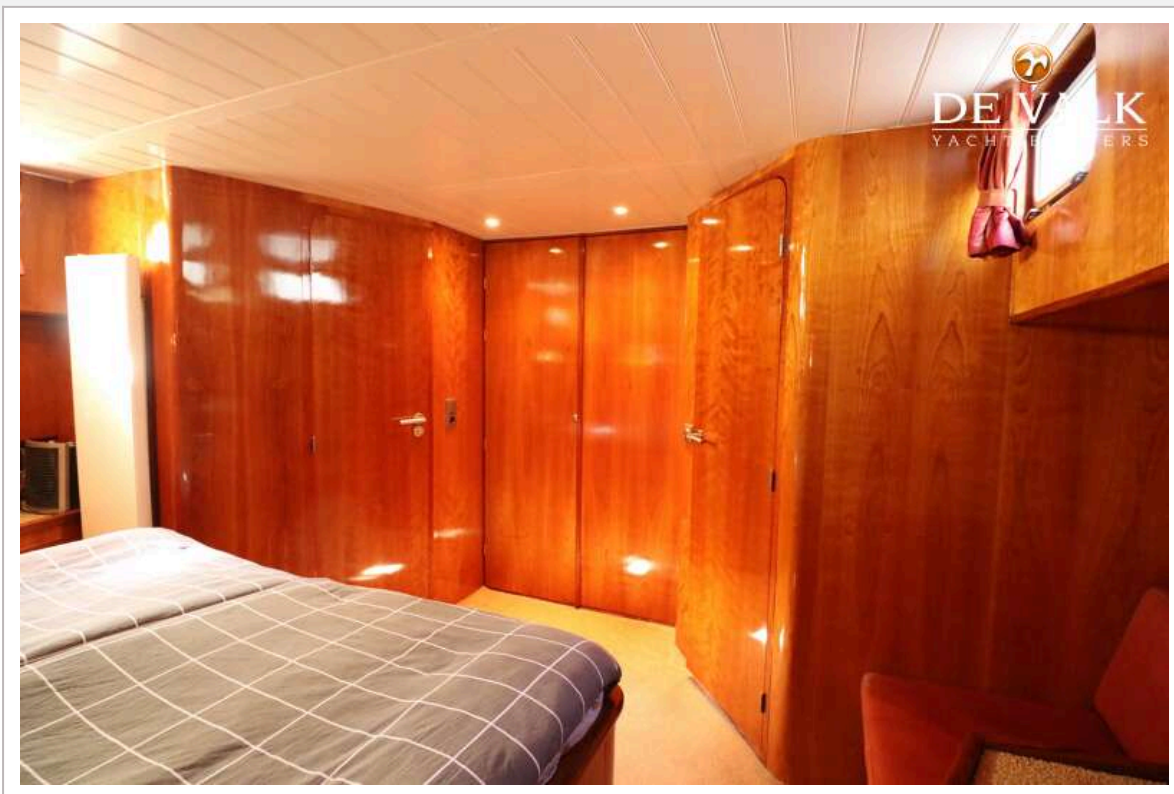
EXPLORER NORTH SEA TRAWLER 1800



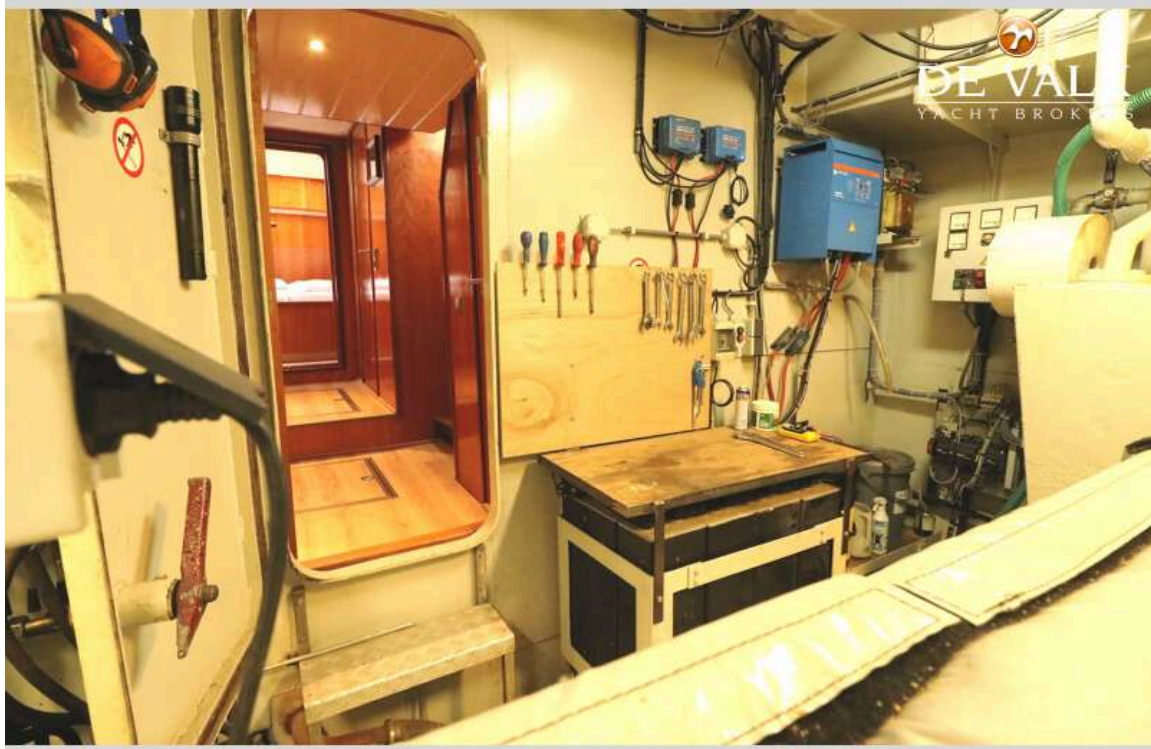
EXPLORER NORTH SEA TRAWLER 1800



EXPLORER NORTH SEA TRAWLER 1800



EXPLORER NORTH SEA TRAWLER 1800



EXPLORER NORTH SEA TRAWLER 1800

