



DE VALK
YACHT BROKERS



FRANS MAAS 41



DE VALK
YACHT BROKERS

BROKERAGE | CHARTER | BERTHS | FINANCE | INSURANCE | YACHT MANAGEMENT

BROKER'S COMMENTS

This Frans Maas 41 is a characteristic yacht with a heavy displacement hull with good seakeeping performance. Ideal for long distance cruising and living onboard for longer periods of time. She has done trans atlantic passages. 'Retemeteng' has been stored inside for the last couple of years and she needs some attention on teakdeck and engine but has also a new mast, rigging and sails. The owner is keen for a quick sale so please get in touch if this is what you are looking for.

Henk Sijbranda

SPECIFICATIONS

Dimensions	12.73 x 3.62 x 2.10 (m)	Builder	Frans Maas Breskens
Built	1972	Cabins	1
Material	GRP	Berths	5
Engine(s)	1 x Perkins 4107 diesel	Hp/Kw	36.00 (hp), 26.00 (kw)
Asking price	sold (VAT)	Lying	contact Hindeloopen

CONTACT

Sales office	De Valk Hindeloopen B.V.	Telephone	+31 514 52 40 00
Address	Oosterstrand 1 8713 JS Hindeloopen NL	E-mail	hindeloopen@devalk.nl

DISCLAIMER

These particulars are given in good faith as supplied but cannot be guaranteed.



GENERAL

Model	FRANS MAAS 41
Type	sailing yacht
LOA (m)	12,73
LWL (m)	10,38
Beam (m)	3,62
Draft (m)	2,10
Air draft (m)	19,00
Headroom (m)	1,90
Year built	1972
Builder	Frans Maas Breskens
Country	The Netherlands
Designer	Frans Maas
Displacement (t)	10
Ballast (tonnes)	lead in GRP 5
Hull material	GRP
Hull colour	blue
Hull thickness (mm)	20
Hull shape	round-bilged
Keel type	fin keel
Superstructure material	wood
Superstructure (mm)	20
Deck plate thickness (mm)	20
Rubbing strake	Teak
Deck material	wood
Deck finish	teak
Superstructure deck finish	teak
Cockpit deck finish	teak
Antifouling (year)	2015
Window frame	aluminium
Window material	perspex



Deckhatch	4x
Insulation	foam plates
Fuel tank (litre)	GRP 250
Level indicator (fuel tank)	yes
Fuel daytank (litre)	stainless steel 25
Freshwater tank (litre)	GRP 2x 250
Level indicator (freshwater)	yes
Blackwater tank (litre)	stainless steel
Blackwater tank extraction	deck extraction + pump
Tiller	yes
Emergency tiller	yes

ACCOMMODATION

Cabins	1
Berths	5
Interior	teak
Open cockpit	yes
Headroom saloon (m)	1,90
Navigation center	yes
Chart table	yes
Convertible berth	2x
Galley	yes
Countertop	Duropol
Sink	stainless steel
Cooker	calor gas
Oven	yes
Gas alarm	yes
Fridge	yes
Manual and/or foot pump	yes
Crockery	yes
Owners cabin	v-bed



Wardrobe	hanging/drawers/shelves
Toilet	shared
Toilet system	manual
Wash basin	at the toilet
Guest cabin 1	single bed
Wardrobe	drawers
Extra info	two sleeping places in salon

MACHINERY

No of engines	1
Make	Perkins
Type	4107
HP	36,00
kW	26,00
Fuel	diesel
Year installed	1972
Year of overhaul	1990
Maximum speed (kn)	7
Cruising speed (kn)	5,5
Consumption (l/hr)	4
Range (nm)	150
Engine hours	8000
Engine cooling system	freshwater heat exchanger
Drive	shaft
Shaft seal	yes
Engine controls	bowden cable
Gearbox	mechanical
Exhaust	watercooled
Propeller type	fixed
Propeller blades	2
Propeller shaft material	stainless steel



Shaft lubrication	water
Manual bilge pump	yes
Electric bilge pump	yes
Bilge alarm	yes
Electrical installation	12 / 220
Start battery	yes
Service battery	yes
Battery monitor	yes
Battery charger	yes
Inverter	yes
Shorepower	with cable
Insulation transformer	yes

NAVIGATION

Compass	yes
Depth sounder	yes
Log	yes
Windset	yes
VHF	yes
Autopilot	yes
Radar	yes
GPS	yes
Weather receiver	yes
Navtex	yes
Radio receiver	yes
Navigation lights	yes
Searchlight	yes

EQUIPMENT

Sprayhood	yes
Bimini	yes



Winter cover	yes
Cockpit cushions	yes
Cockpit table	yes
Anchor	CQR Plough
Anchor chain	Stainless steel
Windlass	electrical
Capstan	yes
Outboard support	yes
Sea railing	stainless steel Wire
Pushpit	yes
Pulpit	yes
Fenders	yes
Mooring lines	yes
Spare parts	yes
Tools	yes
Radio-cd player	yes
Speakers in salon	yes
Clock - barometer	yes

RIGGING

Rigging	fractional
Standing rigging	wire
Brand mast	Proctor
Material mast	aluminium coated
Spreaders	2 pair
Keel stepped mast	yes
Mainsail	yes
Mainsail cover	yes
Fully battened mainsail	yes
Jib I/II	yes
Genoa furler	yes



Booster	yes
Reefing System	slabreefing
Backstay adjuster	mechanical
Boomvang	gasspring
Secondary sheet winch	2x
Genoa sheetwinches	2x
Spinnaker winch	2x
Reefing winch	Yes
Spi-pole	aluminium
Isolated backstay	Yes





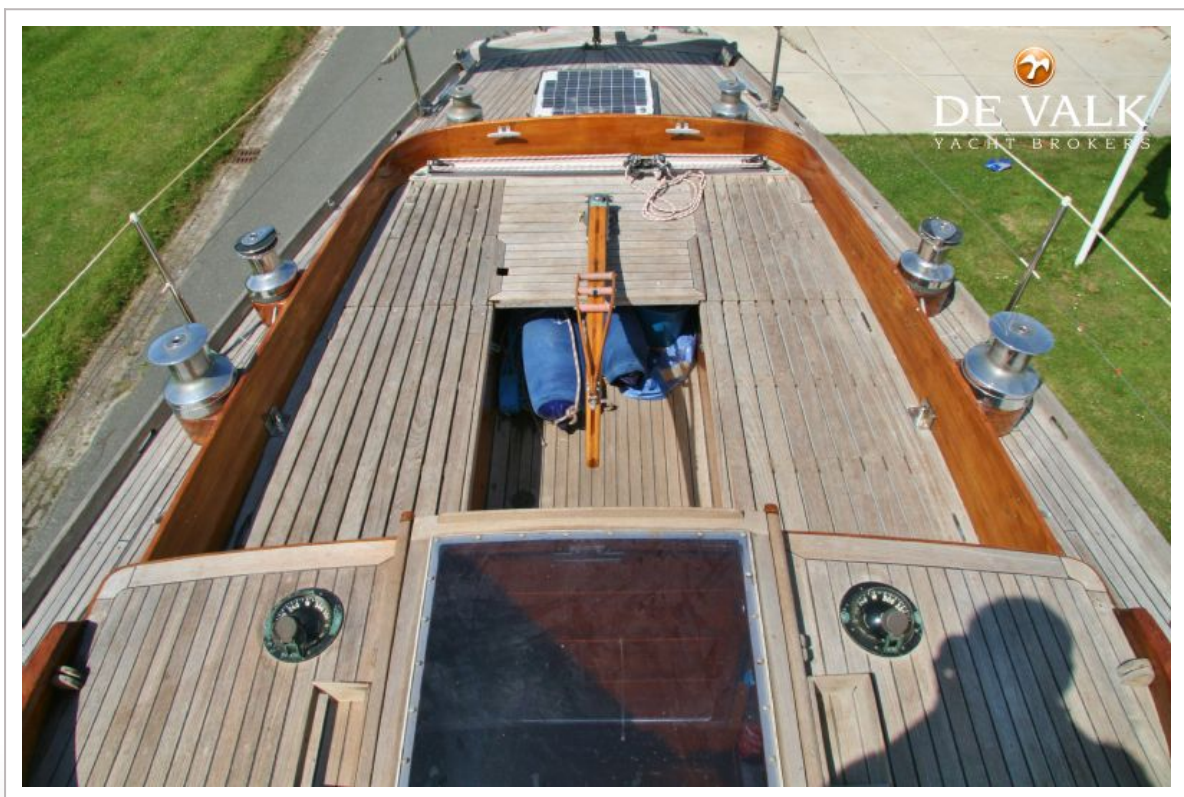


FRANS MAAS 41

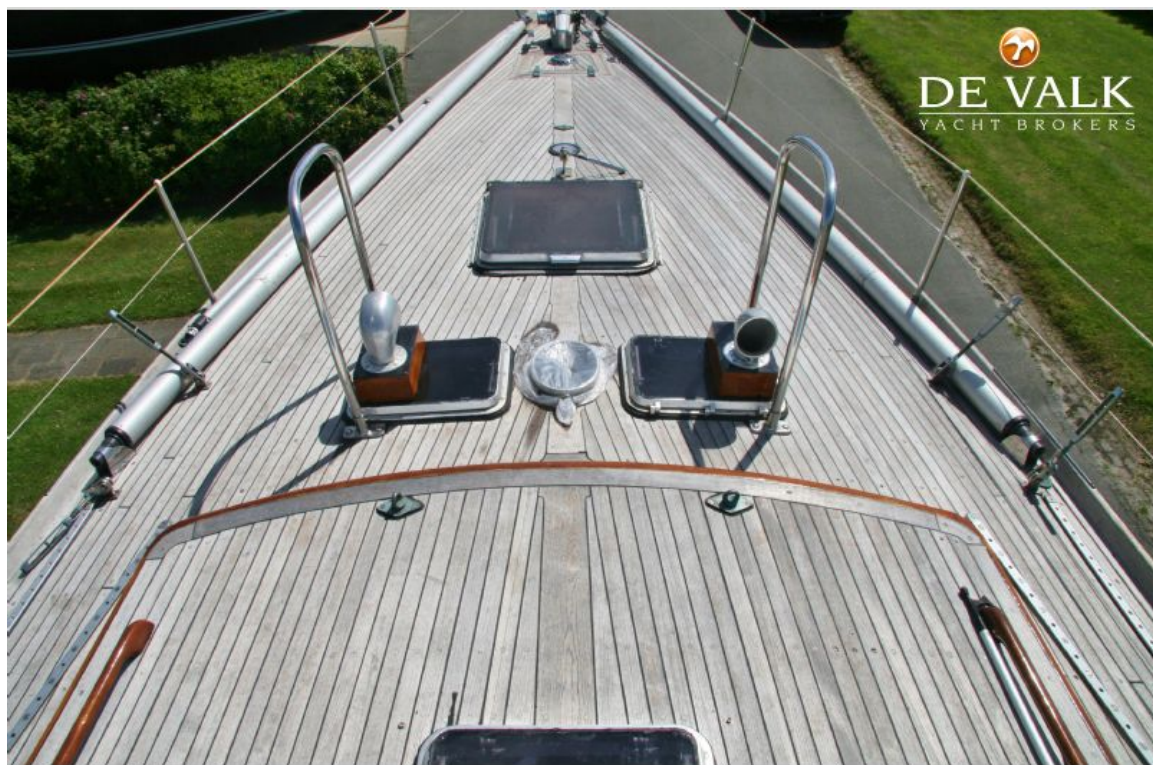


FRANS MAAS 41













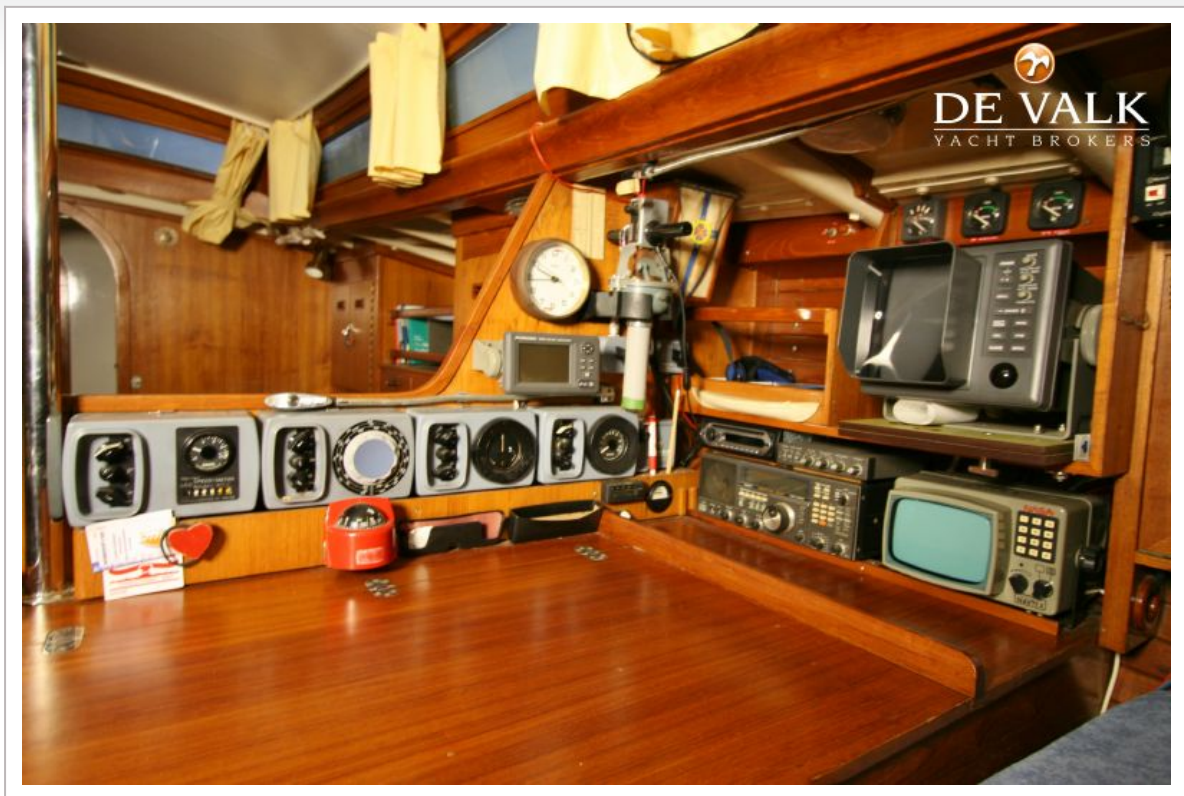


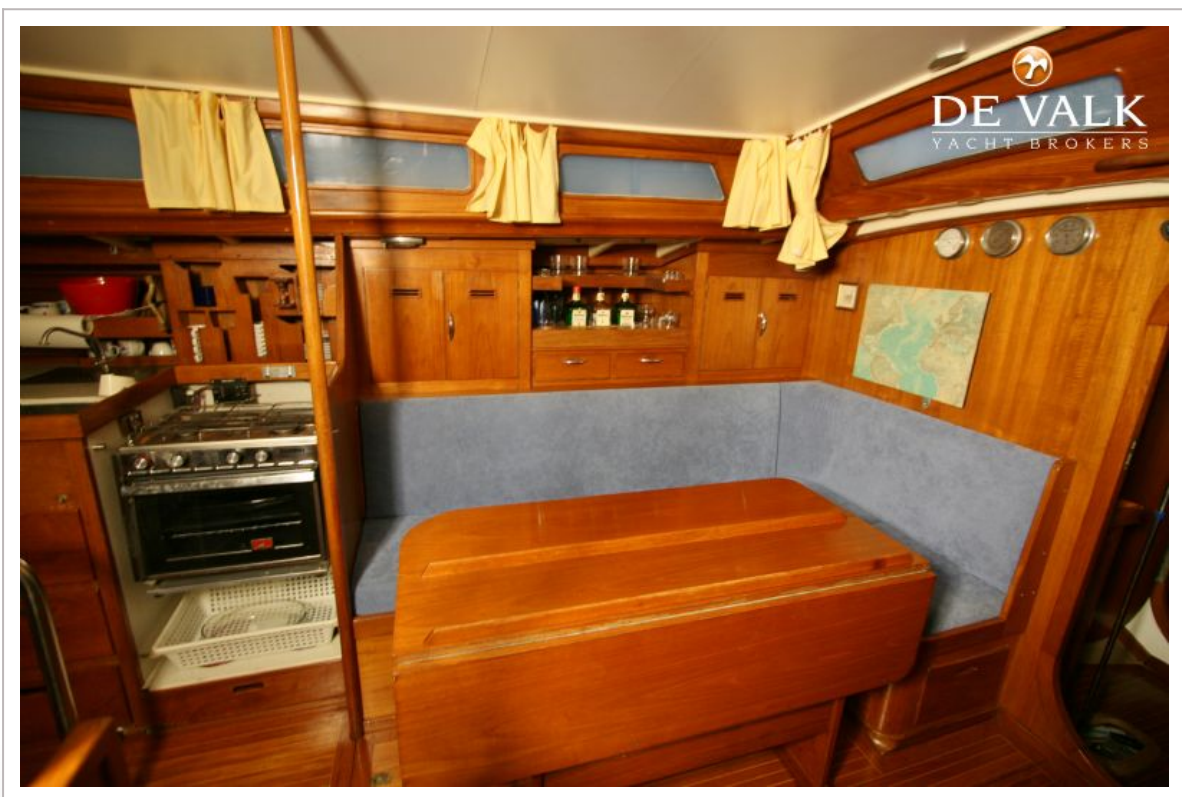




FRANS MAAS 41







FRANS MAAS 41





