



DE VALK
YACHT BROKERS



BEELDSNIJDER PILOTHOUSE SCHOENER 50



DE VALK
YACHT BROKERS

BROKER'S COMMENTS

This well-maintained steel deckhouse schooner sailing yacht is designed by Pieter Beeldsnijder. Construction started between 1994/1996, but the yacht was not completely finished until 2004, and is always used by the first owner. She offers style and comfort and has many nice details. A lot of beautiful stainless steel has been placed on the yacht. Her high volume in combination with three sleeping cabins and with her deckhouse configuration makes her ideal for staying on board and for long-term cruising. Is located on fresh water in the South of the Netherlands and can be viewed by appointment

Marc Weijnenberg

SPECIFICATIONS

Dimensions	14.85 x 4.50 x 2.10 (m)	Builder	De Ruyter/Fish-Tech
Built	1996	Cabins	3
Material	Steel	Berths	6
Engine(s)	1 x Cummins 6 B5 9-M diesel	Hp/Kw	110.00 (hp), 81.00 (kw)
Asking price	€ 249.000 (VAT Paid)	Lying	elsewhere / Not at sales office

CONTACT

Sales office	De Valk Thuishaven	Telephone	+31 35 5829042
Address	Marinaweg 8 1361 AC Almere NL	E-mail	thuishaven@devalk.nl

DISCLAIMER

These particulars are given in good faith as supplied but cannot be guaranteed.



GENERAL

Model	BEELDSNIJDER PILOTHOUSE SCHOENER 50
Type	sailing yacht
LOA (m)	14,85
LWL (m)	12,85
Beam (m)	4,50
Draft (m)	2,10
Air draft (m)	18,40
Headroom (m)	1,90
Year built	1996
Launched	2004
Builder	De Ruyter/Fish-Tech
Country	The Netherlands
Designer	Pieter Beeldsnijder
Displacement (t)	25
Ballast (tonnes)	lead in steel 7
Hull material	steel
Hull colour	blue
Hull thickness (mm)	6 mm
Hull shape	S-bilged
Keel type	long keel
Superstructure material	steel
Deck material	steel
Deck finish	teak
Superstructure deck finish	paint
Cockpit deck finish	teak
Dorades	6 x (stainless steel)
Window frame	stainless steel
Window material	glass
Deckhatch	yes
Portholes	brass



Insulation	glasswool
Fuel tank (litre)	stainless steel 600
Level indicator (fuel tank)	Votronic
Fuel daytank (litre)	yes
Freshwater tank (litre)	stainless steel 800
Level indicator (freshwater)	Votronic
Blackwater tank (litre)	stainless steel
Level indicator (blackwater)	Votronic
Blackwater tank extraction	pump
Wheel steering	hydraulic
More info on paintwork	Double Coat De IJssel (2-comp system)
Extra info	Loa 14,87 + 2,50 mtr

ACCOMMODATION

Cabins	3
Berths	6
Interior	cherry
Layout	deck house / saloon / aft cabin / forward cabin / 3rd cabin / 1x toilet-shower
Floor	teak and holly
Open cockpit	yes
Pilot house/deck saloon	yes
Saloon	yes
Headroom saloon (m)	1,90
Heating	central hot water Kabola Heating Systems B8 Cap/kW 11
Chart table	yes
Aft Cabin	yes
Dinette	yes
Galley	yes
Countertop	plastic
Sink	stainless steel



BEELDSNIJDER PILOTHOUSE SCHOENER 50

Cooker	calor gas
Oven	Smev (stainless steel)
Microwave	Daewoo Kor 634R (220v)
Fridge	EC Electrolux refrigerator and an extra refrigerator
Freezer	small one in the EC Electrolux refrigerator
Hot water system	220V + engine
Water pressure system	electrical
Owners cabin	French bed
Bed length (m)	2,00 x 1,50
Wardrobe	hanging and shelves
Bathroom	shared I
Toilet	shared
Toilet system	manual
Wash basin	in the bathroom
Shower	shared
Guest cabin 1	twin single
Bed length (m)	2,00 x 0,80
Wardrobe	hanging and shelves
Guest cabin 2	bunk bed
Bed length (m)	2,10 X 0,75 / 2,15 X 0,80
Wardrobe	hanging and shelves

MACHINERY

No of engines	1
Make	Cummins
Type	6 B5 9-M
HP	110
kW	81
Fuel	diesel
Year installed	1998
Maximum speed (kn)	8,5



Cruising speed (kn)	7
Engine hours	745
Engine cooling system	freshwater heat exchanger
Drive	shaft
Shaft seal	yes
Engine controls	bowden cable
Gearbox	ZFRM 50P2
Bowthruster	electric
Exhaust	watercooled
Propeller type	fixed
Propeller blades	3
Propeller shaft material	stainless steel
Shaft lubrication	water
Electric bilge pump	1 x
Electrical installation	12/24/220v
Generator	wet exhaust SET Euro 4 / 4 kW (1999)
Running hours generator	265
Start battery	2
Service battery	2
Generator battery	1
Bowthruster battery	2
Battery monitor	Victron Digital Multi Control
Battery charger	Mastervolt 24v/12v
Battery charger/inverter	Victron Multiplus 24v/3000watt/70amp
Shorepower	with cable

NAVIGATION

Compass	yes
Electric compass	VDO Navpac
Depth sounder	VDO Navpac
Log	VDO Navpac



Windset	VDO Navpac
VHF	Icom IC 323G + GPS
Autopilot	VDO Pilot
Rudder angle indicator	VDO Pilot
Radar	Raytheon SL 70
Plotter/GPS	VDO Kienzle Logic Map 7

EQUIPMENT

Winter cover	yes
Window cover	on the hatches
Boarding ladder	stainless steel
Deck shower	yes
Anchor	Pool Stainless
Anchor chain	4 mtr. stainless / 30 mtr. galvanized
Windlass	electrical
Capstan	electrical
Deck wash	yes
Dinghy	rigid hull
Deck crane	manual
Sea railing	wire
Railing side opening gates	yes
Pushpit	yes
Pulpit	yes
Fenders	yes
Mooring lines	yes
Radio-cd player	Clarion
Speakers in salon	yes

RIGGING

Rigging	schooner
Standing rigging	wire



Material mast	wood Douglas spars (coated Precalex)
Mast lowering system	with an electric system
Mainsail	Zwaan Sails (2004)
Mainsail cover	yes
Cutterstay	yes
Main staysail	Zwaan Sails (2004)
Fisherman staysail	Zwaan Sails (2004)
Jib	Zwaan Sails (2004)
Reefing System	slabreefing
Multifunctional winches	halyard/sheet winches 2 x Lewmar (electric)
Extra info	Many beautiful stainless steel fittings are fitted on the masts and booms.

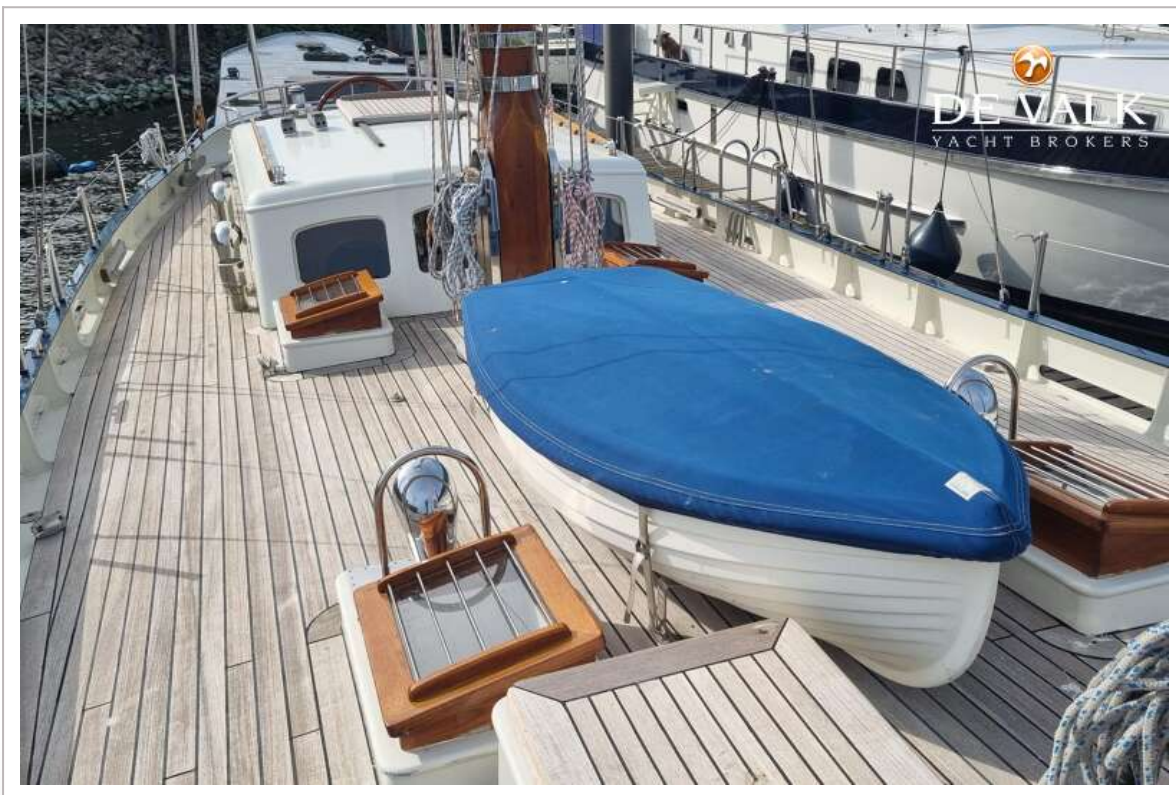




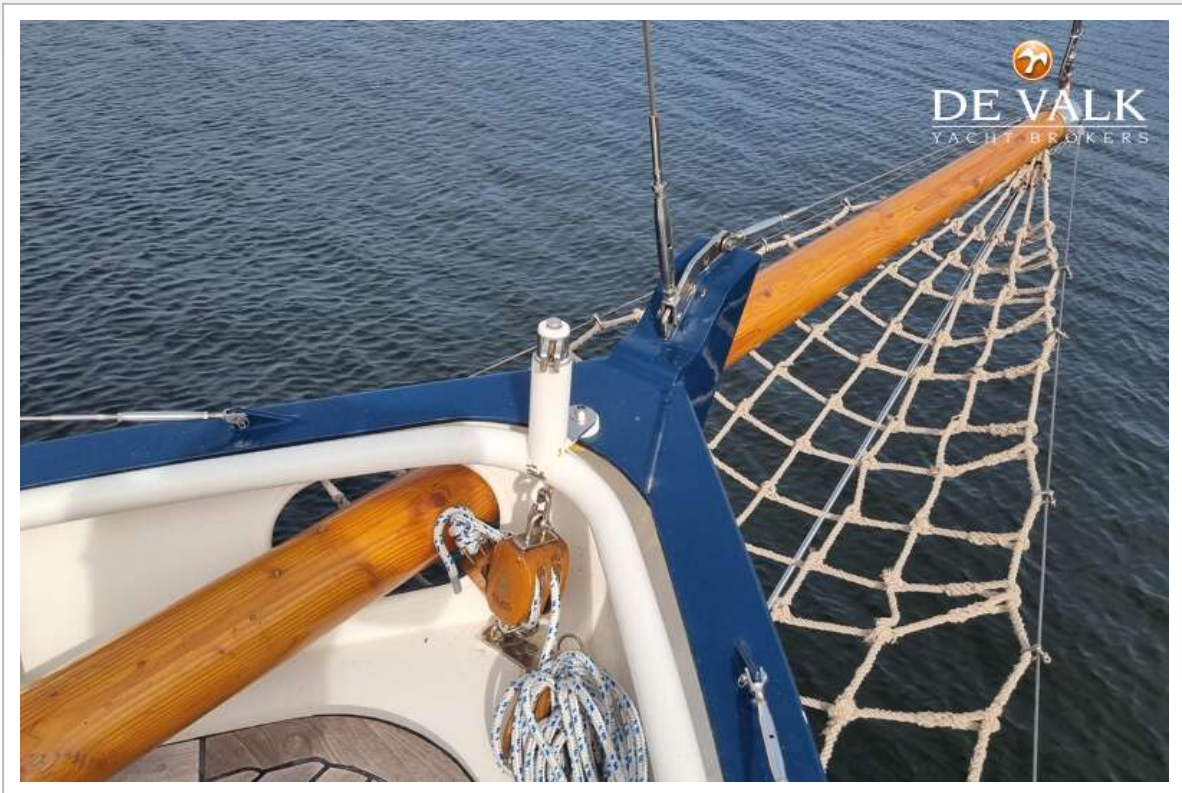




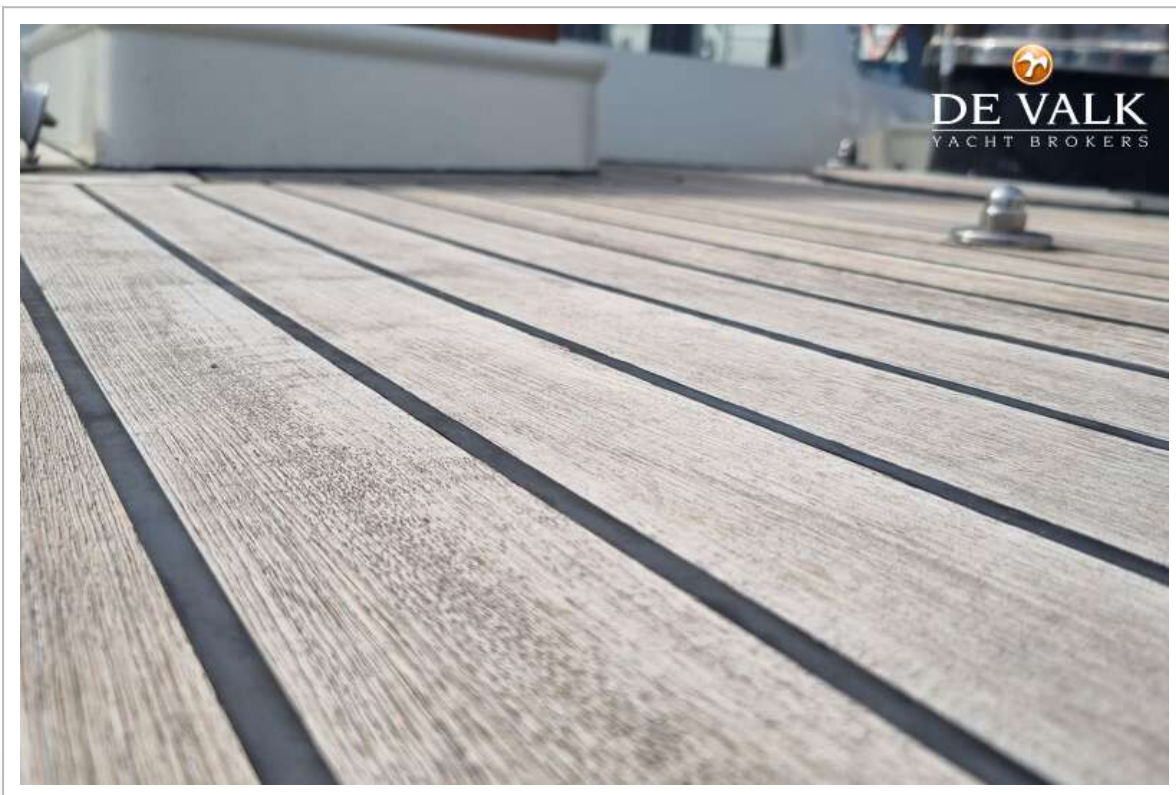
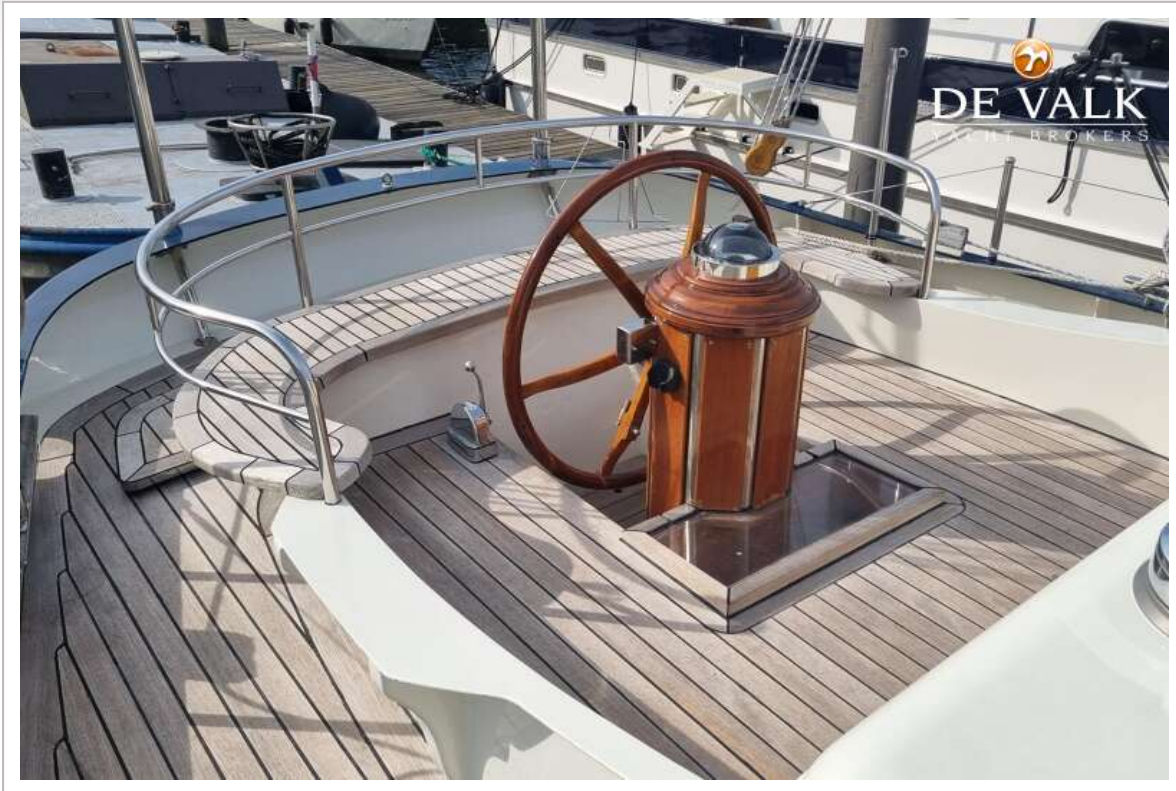




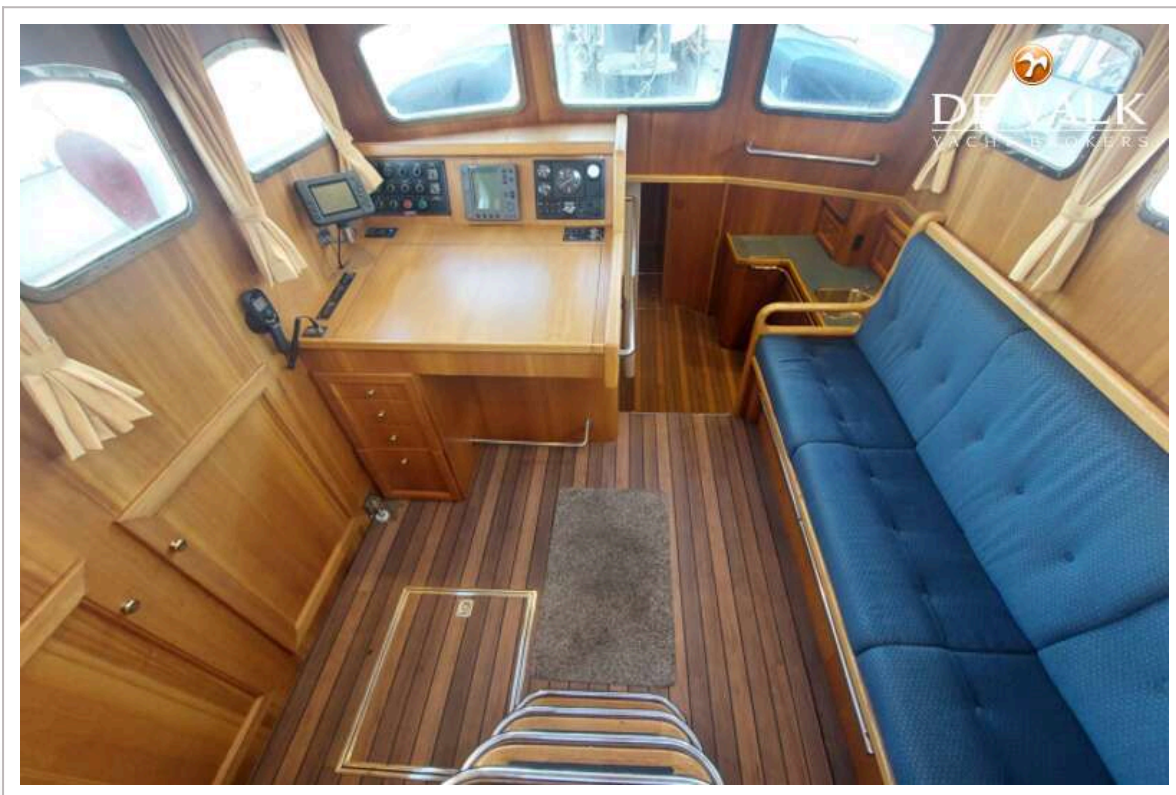




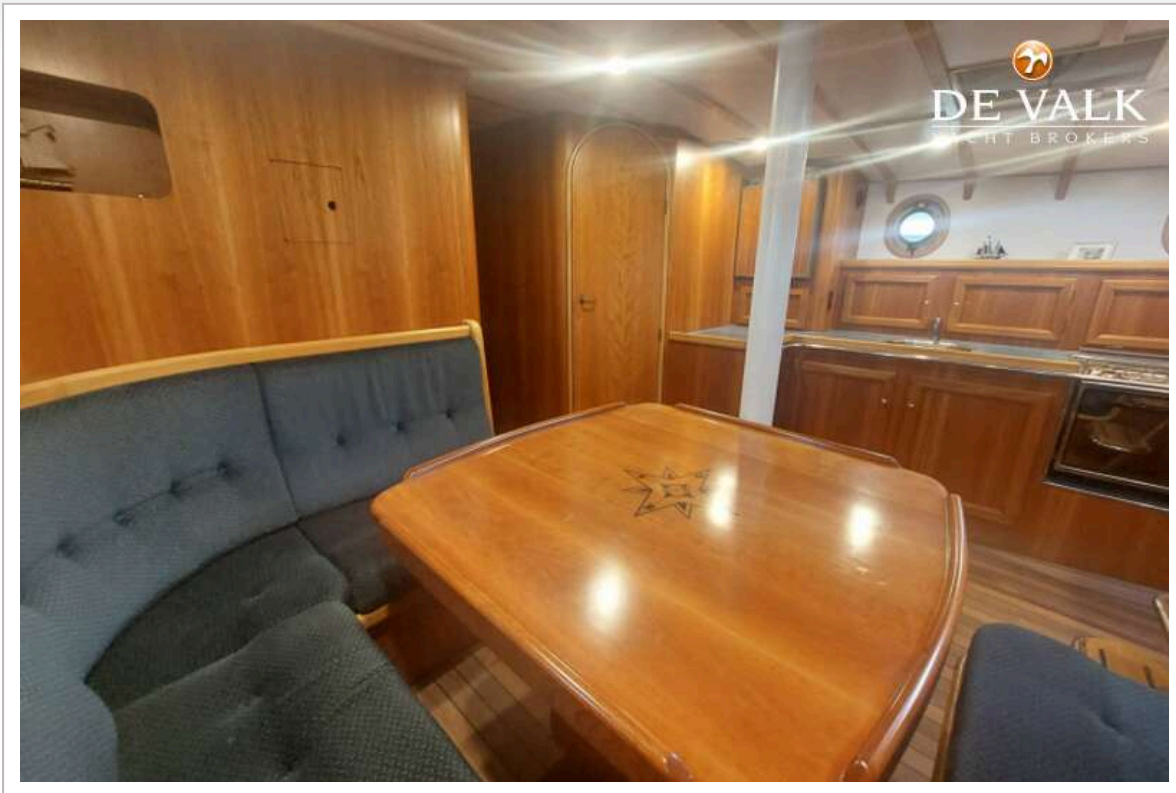


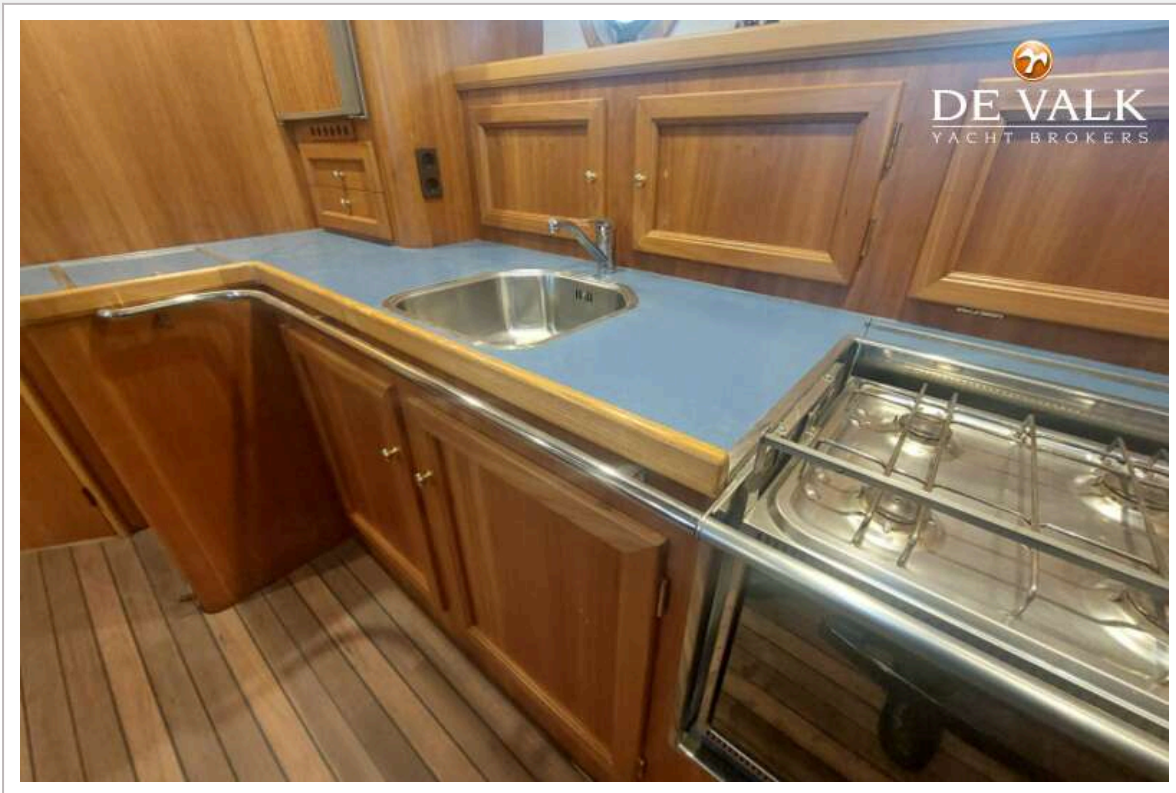


BEELDSNIJDER PILOTHOUSE SCHOENER 50

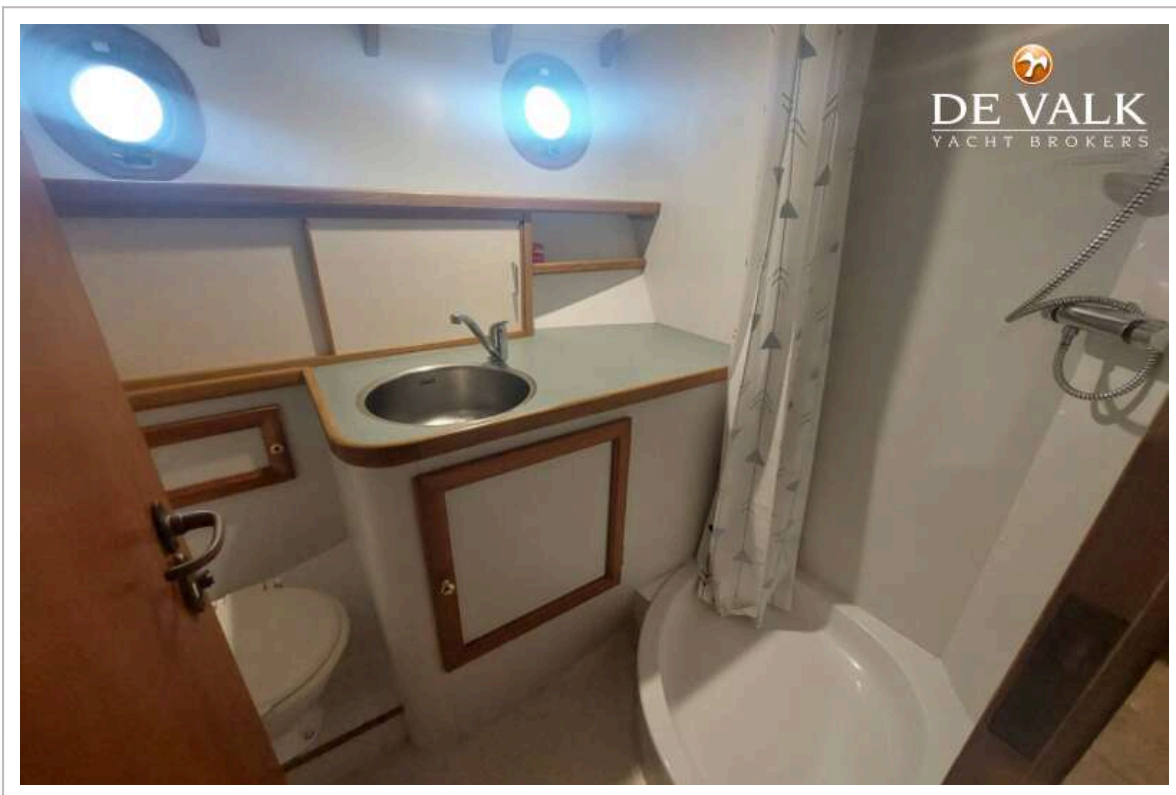
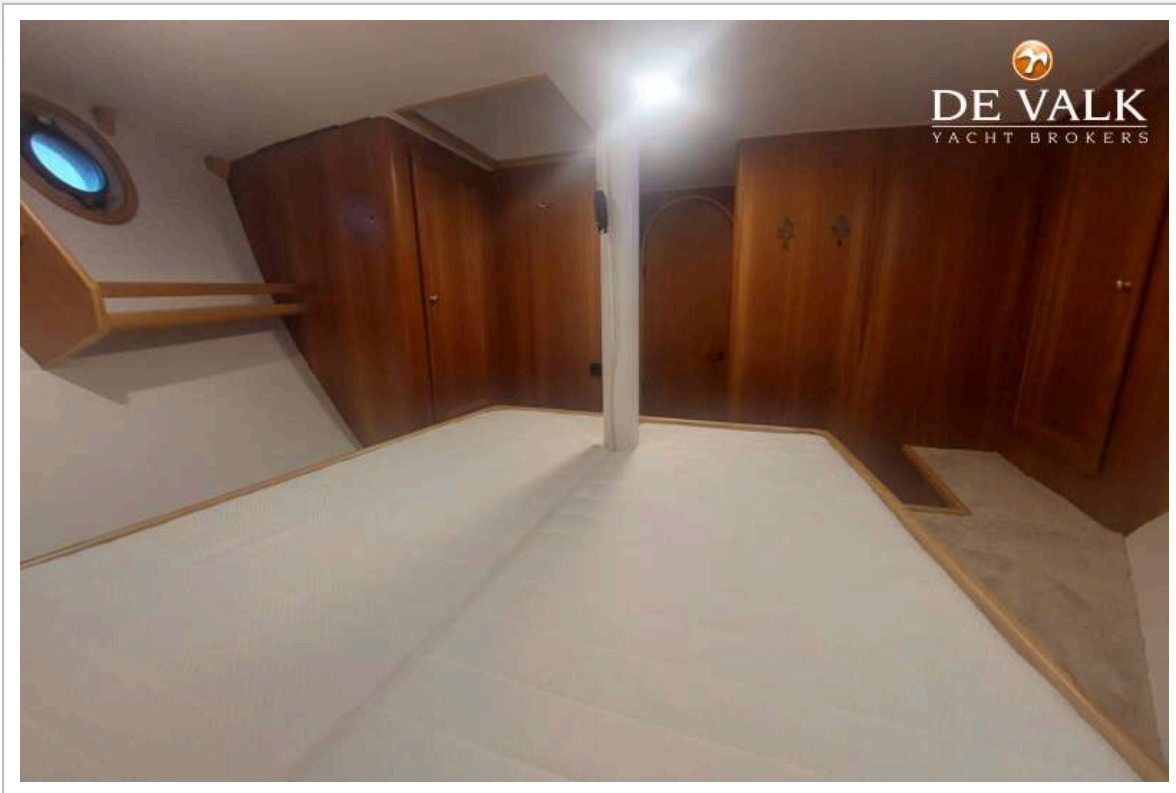


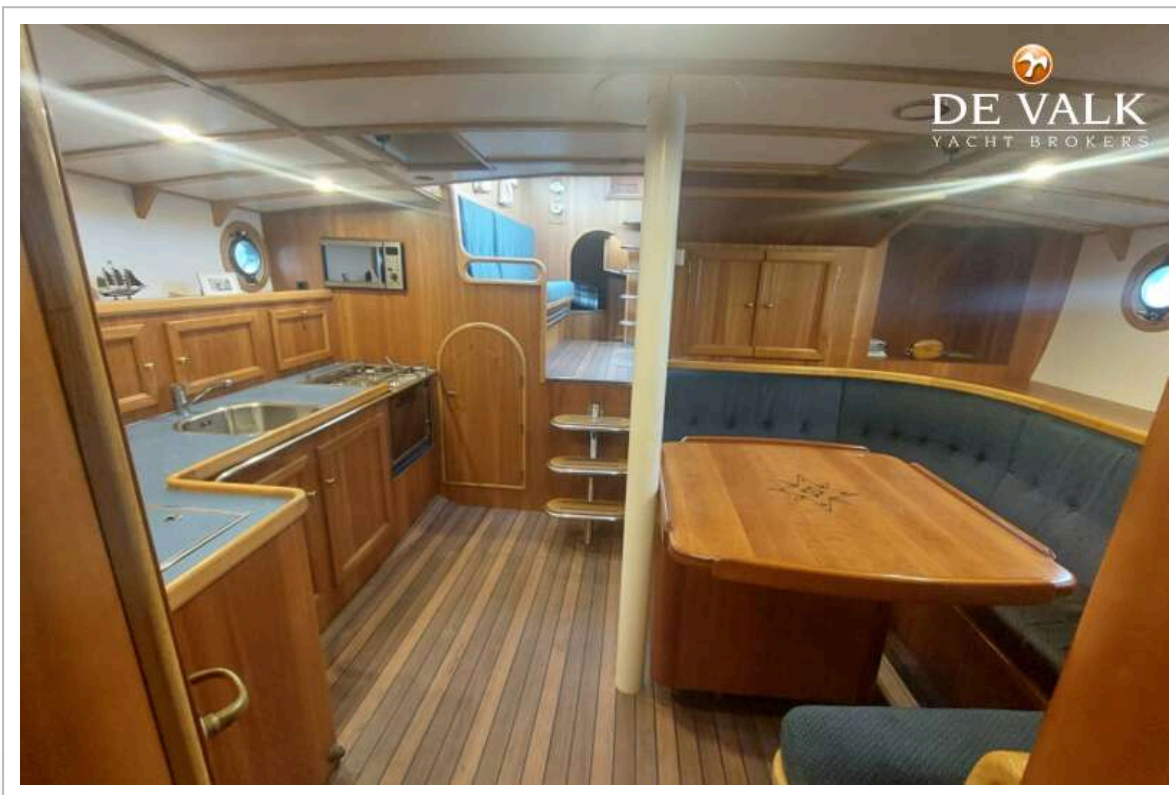




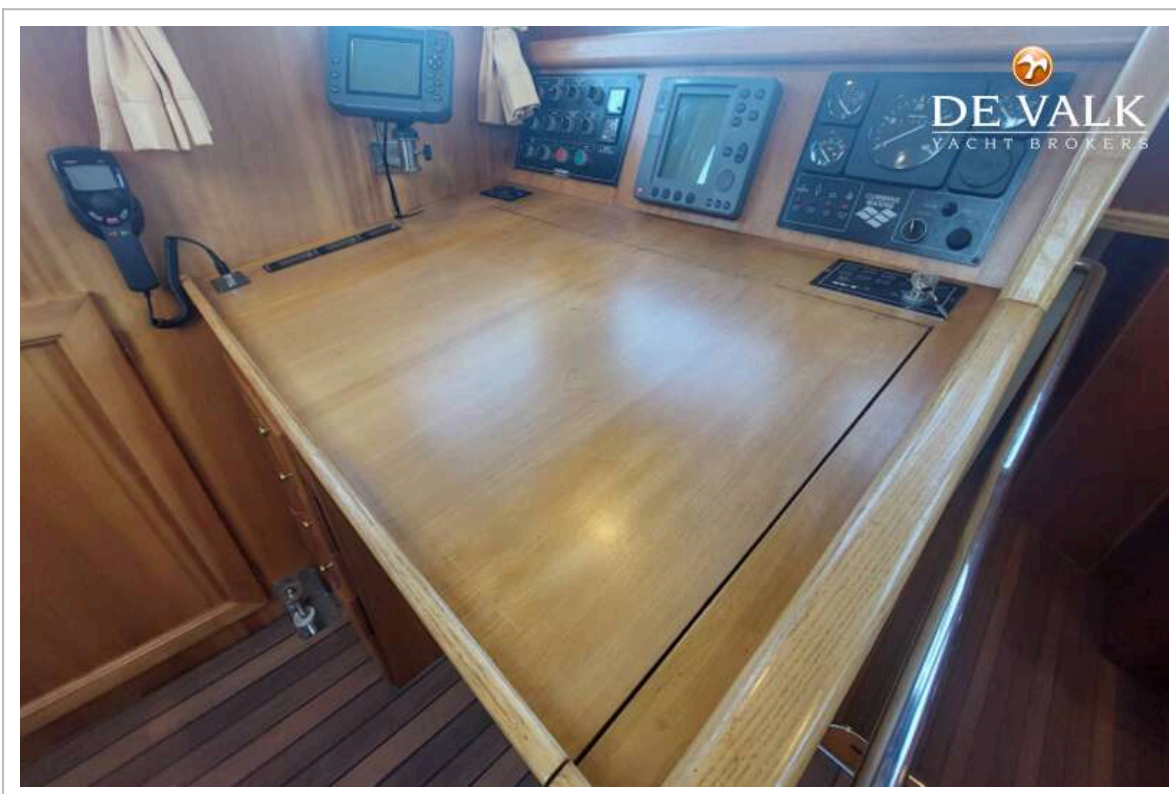
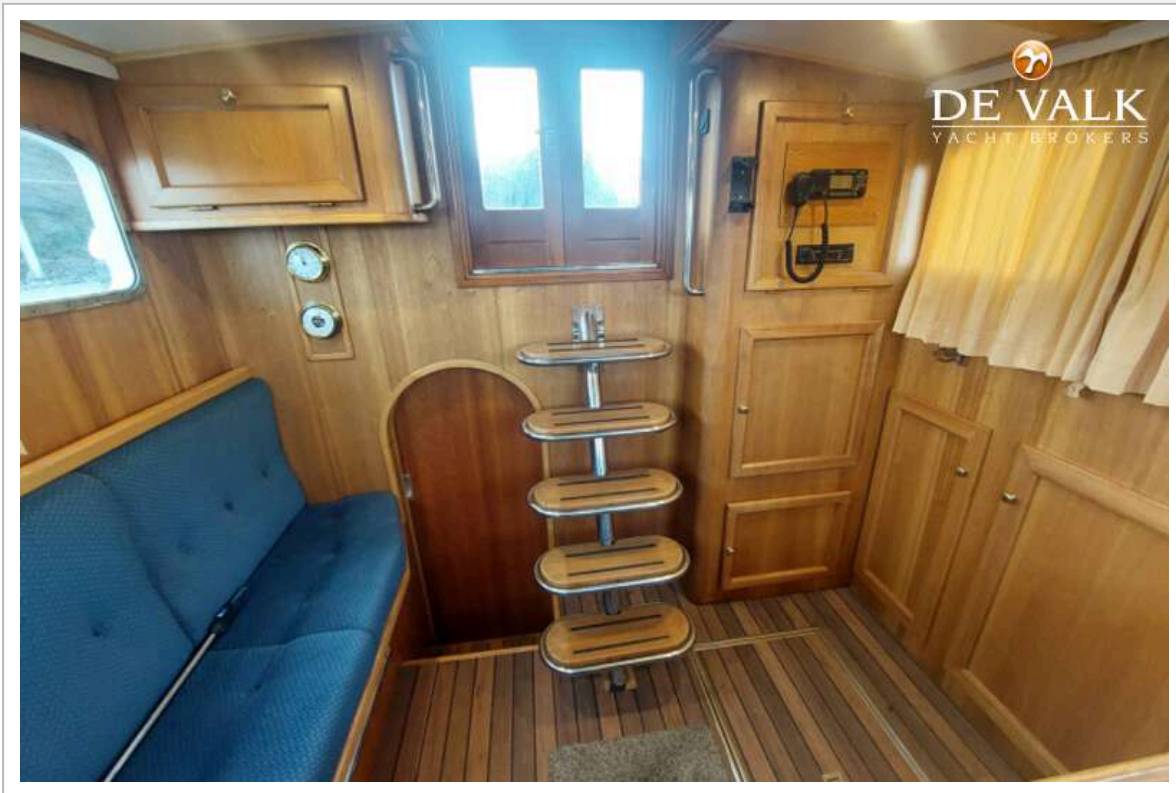


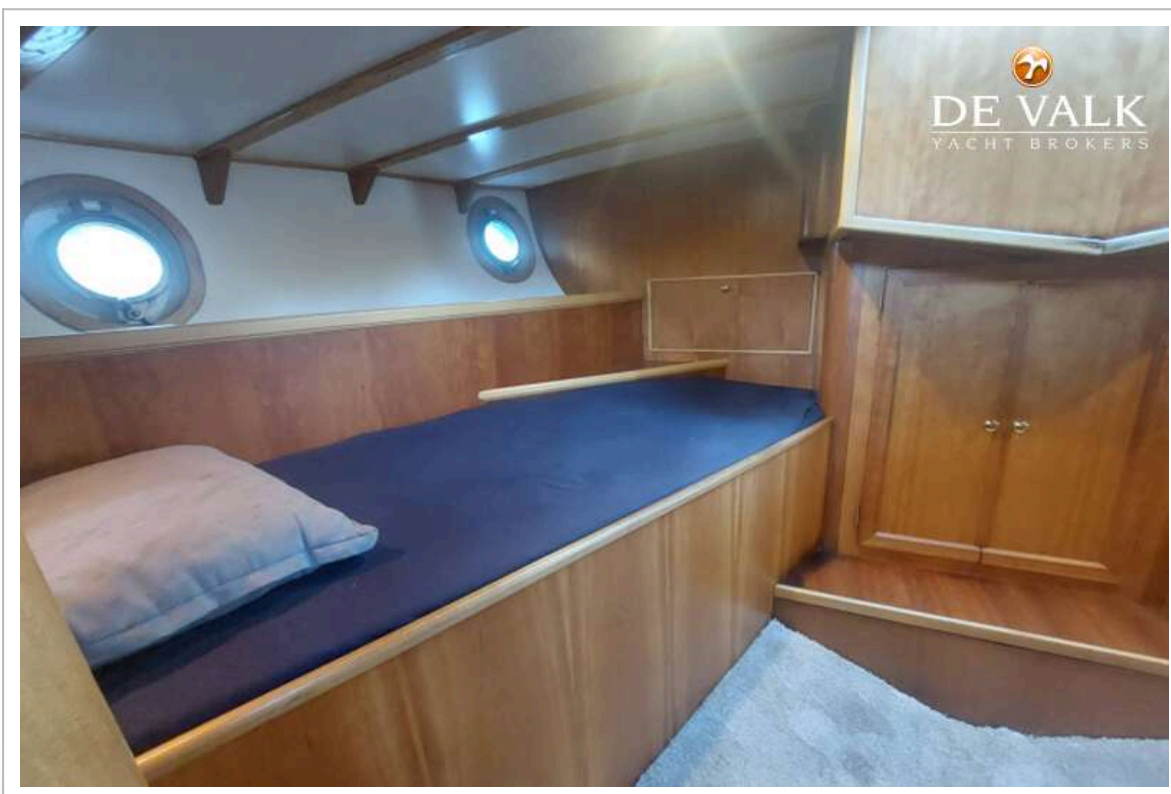


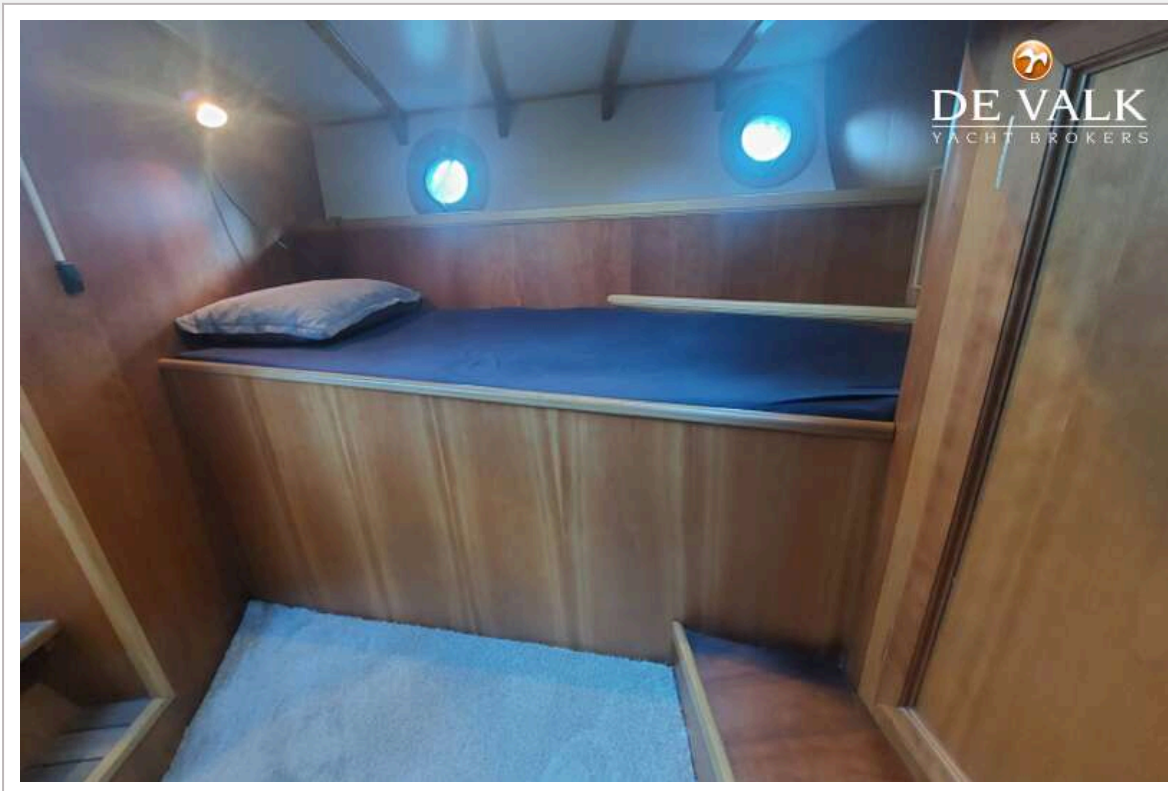




BEELDSNIJDER PILOTHOUSE SCHOENER 50







BEELDSNIJDER PILOTHOUSE SCHOENER 50

