



DE VALK
YACHT BROKERS



COMPROMIS 39 CLASS



DE VALK
YACHT BROKERS

BROKER'S COMMENTS

Popular centrecockpit yacht from the appreciated Zaadnoordijk yard. Quality in construction, safe, comfortable and well finished and handling characteristics to match. Frans Maas and the yard have succeeded in creating a well balanced yacht that is capable of sailing safe and comfortably in adverse conditions. She comes well maintained and recommended by her 2nd owner from new. Stoway sails for easy and secure handling. She has a spacious aft cabin with centerline double bed and ample stowage space.

Stef Struijk

SPECIFICATIONS

Dimensions	11.60 x 3.90 x 1.65 (m)	Builder	Jachtwerf Zaadnoordijk
Built	1998	Cabins	2
Material	GRP	Berths	5
Engine(s)	1 x Yanmar 3JH2 diesel	Hp/Kw	38.00 (hp), 27.93 (kw)
Asking price	sold (VAT)	Lying	at sales office

CONTACT

Sales office	De Valk Sint Annaland B.V.	Telephone	+31 (0)166 601 000
Address	Koelhuisweg 4 4697 RM Sint Annaland NL	E-mail	sintannaland@devalk.nl

DISCLAIMER

These particulars are given in good faith as supplied but cannot be guaranteed.



GENERAL

Model	COMPROMIS 39 CLASS
Type	sailing yacht
LOA (m)	11,60
LWL (m)	9,00
Beam (m)	3,90
Draft (m)	1,65
Air draft (m)	19,50
Headroom (m)	2,00
Year built	1998
Builder	Jachtwerf Zaadnoordijk
Country	The Netherlands
Designer	Frans Maas
Displacement (t)	8,5
Ballast (tonnes)	cast iron 3,75
Hull material	GRP
Hull colour	white
Hull shape	round-bilged
Keel type	bulb keel
Superstructure material	GRP
Rubbing strake	rubber
Deck material	GRP
Deck finish	teak
Superstructure deck finish	anti-slip moulded in
Cockpit deck finish	teak
Window frame	aluminium
Window material	tempered glass
Deckhatch	yes
Portholes	aluminium
Fuel tank (litre)	stainless steel 150
Freshwater tank (litre)	stainless steel 2 x 200



Blackwater tank (litre)	polyethylene 60
Blackwater tank extraction	deck extraction + pump
Wheel steering	cable steering Solimar
Emergency tiller	yes

ACCOMMODATION

Cabins	2
Berths	5
Interior	teak
Floor	teak and holly
Saloon	with L-shape dinette and 2 x comfort seats
Headroom saloon (m)	2,00
Heating	diesel ducted hot air Webasto Airtop 32
Heating 2	electric 220V
Chart table	yes
Aft Cabin	yes
Dinette	yes
Galley	yes
Countertop	plastic
Sink	stainless steel
Cooker	calor gas 3 burner ss
Oven	in cooker
Microwave	Sharp 220v
Fridge	Coolmatic with holdingplate
Hot water system	220V + engine
Water pressure system	electrical
Manual and/or foot pump	footpump
Coffee maker	Krups Espresso
Owners cabin	double bed Aft/achter/hinten
Bed length (m)	2,05 x 1,62
Wardrobe	shelves and hanging



Bathroom	en suite I
Toilet	en suite
Toilet system	manual
Wash basin	in the bathroom
Shower	en suite
Guest cabin 1	v-bed
Bed length (m)	2,25 x 0,62
Wardrobe	shelves and hanging
Bathroom	en suite II
Toilet	en suite Not mounted
Toilet system	manual
Wash basin	in the bathroom
Washing machine	Candy Aquamatic (2011)
Extra info	Truma calor gas safety solenoid

MACHINERY

No of engines	1
Make	Yanmar
Type	3JH2
HP	38,00
kW	27,93
Fuel	diesel
Year installed	1998
Maximum speed (kn)	8
Cruising speed (kn)	6,5
Consumption (l/hr)	3,5
Range (nm)	yes
Engine hours	2023
Engine cooling system	freshwater heat exchanger
Drive	sail-drive
Engine controls	bowden cable



Gearbox	mechanical
Exhaust	watercooled
Propeller type	feathering Maxprop
Propeller blades	3
Manual bilge pump	yes
Electric bilge pump	yes
Electrical installation	12/220v
Start battery	80 ah (2015)
Service battery	3 x 100 ah (2014)
Battery monitor	Mastervolt
Battery charger	yes
Inverter	300 watt Mastervolt
Battery charger/inverter	with automatic change-over switch Mastervolt 12v/2400 watt/50ah
Shorepower	with cable

NAVIGATION

Compass	Urania
Electric compass	Via autopilot
Depth sounder	Autohelm ST50
Log	Autohelm ST50
Windset	Autohelm ST50
VHF	+ set for cockpit Shipmare RS8300
Autopilot	Raymarine ST7002 (2010)
Rudder angle indicator	Via autopilot
Radar	Raymarine SL70 Pathfinder
GPS	Magellan FX324
Plotter	Advansea T56 (2010)
Electronis chart(s)	coastal and sea Europa 1 x

EQUIPMENT



Fixed windscreen	yes
Sprayhood	(2008)
Cockpit cover	(2008)
Bimini	(2008)
Cockpit table	fold-down Teak
Boarding ladder	stainless steel
Deck shower	yes
Anchor	Rocna 20kg (2010)
Anchor chain	40 mtr
Anchor 2	yes
Anchor chain	leadline 20 mtr
Other ground tackle	spare anchor
Windlass	electrical Lofrans + remote (2009)
Sea railing	stainless steel
Grab rail (superstructure)	teak
Railing side opening gates	yes
Pushpit	yes
Pulpit	yes
Life raft	container Plastimo Offshore
Life raft (pers)	6
Last life raft survey	04-2005
Lifebuoy	yes
Radar reflector	Trilens
Fenders	yes
Mooring lines	yes
TV	Phillips Matchline
TV receiver	Sat-dish not included Pioneer
Radio-cd player	JVC
DVD player	Phillips
Cockpit speakers	yes
Speakers in salon	yes
Clock - barometer	yes



Fire extinguisher

3 x

Extra info

safe

RIGGING

Rigging

sloop

Standing rigging

wire

Brand mast

Seldén

Material mast

aluminium

Spreaders

2 x

Mainsail

UK Sails (2013)

Stoway mast

yes

Genoa

De Vries tri-rad (2007)

Genoa furler

Furlex 300S

Genoa cover

yes

Booster

with squeezer De Vries

Reefing System

main in-mast furling

Backstay adjuster

mechanical

Boomvang

gasspring Seldén Rodkicker

Genoa sheetwinches

2 x Anderssen 52ST

Halyard winches

2 x Anderssen 40ST

Spi-pole

aluminium

Extra info

Taller rig to compensate for in-mast furling All sheets lead aft into cockpit for ease of handling Small stainless bowsprit for booster



COMPROMIS 39 CLASS



COMPROMIS 39 CLASS



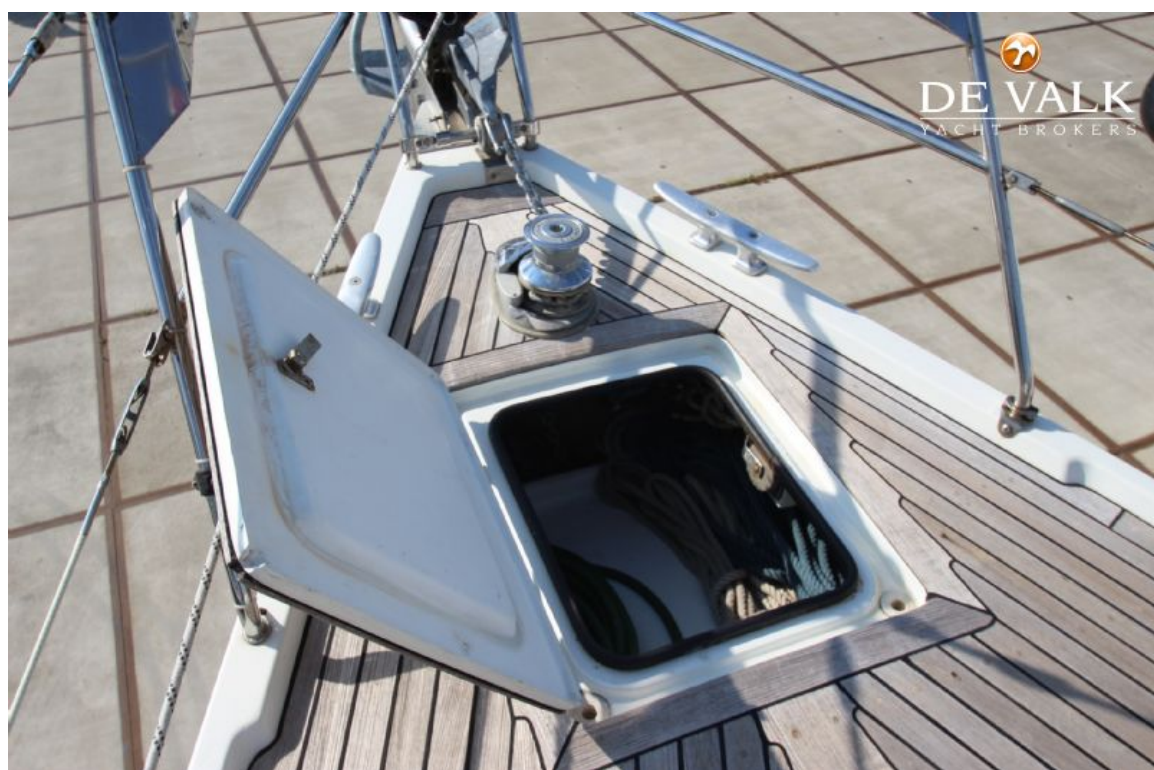
COMPROMIS 39 CLASS



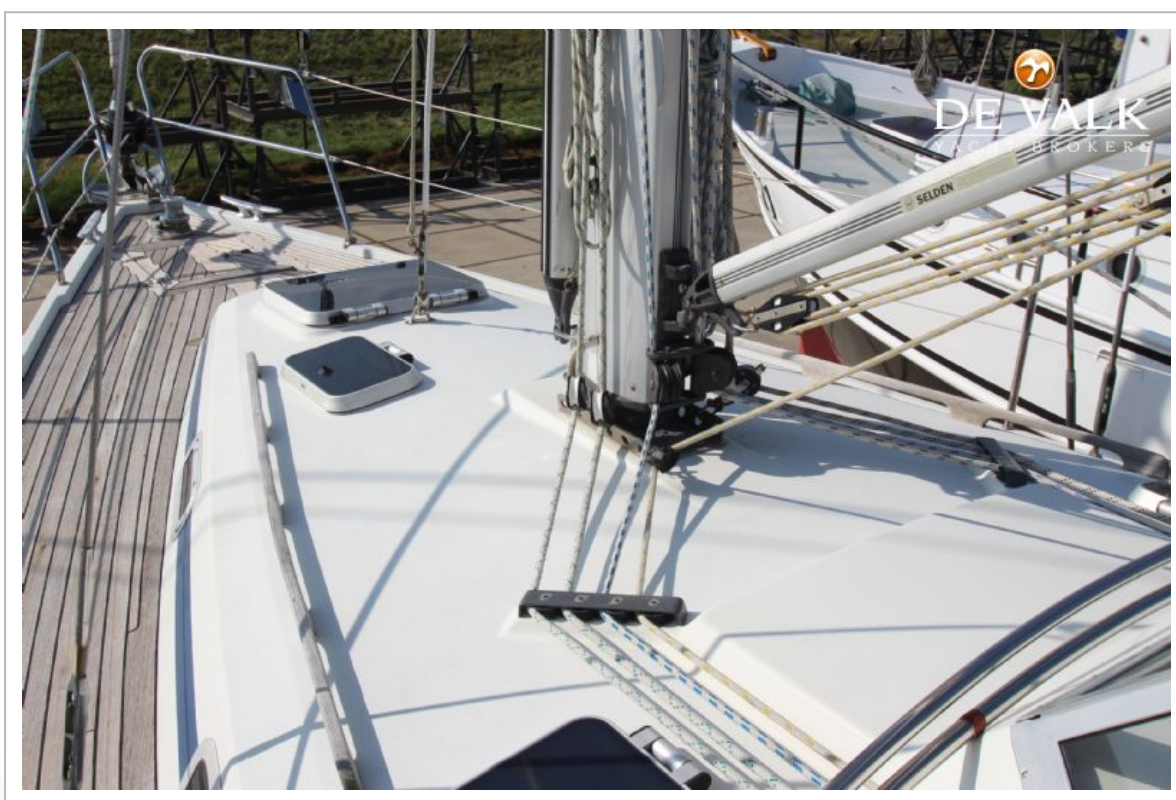
COMPROMIS 39 CLASS



COMPROMIS 39 CLASS



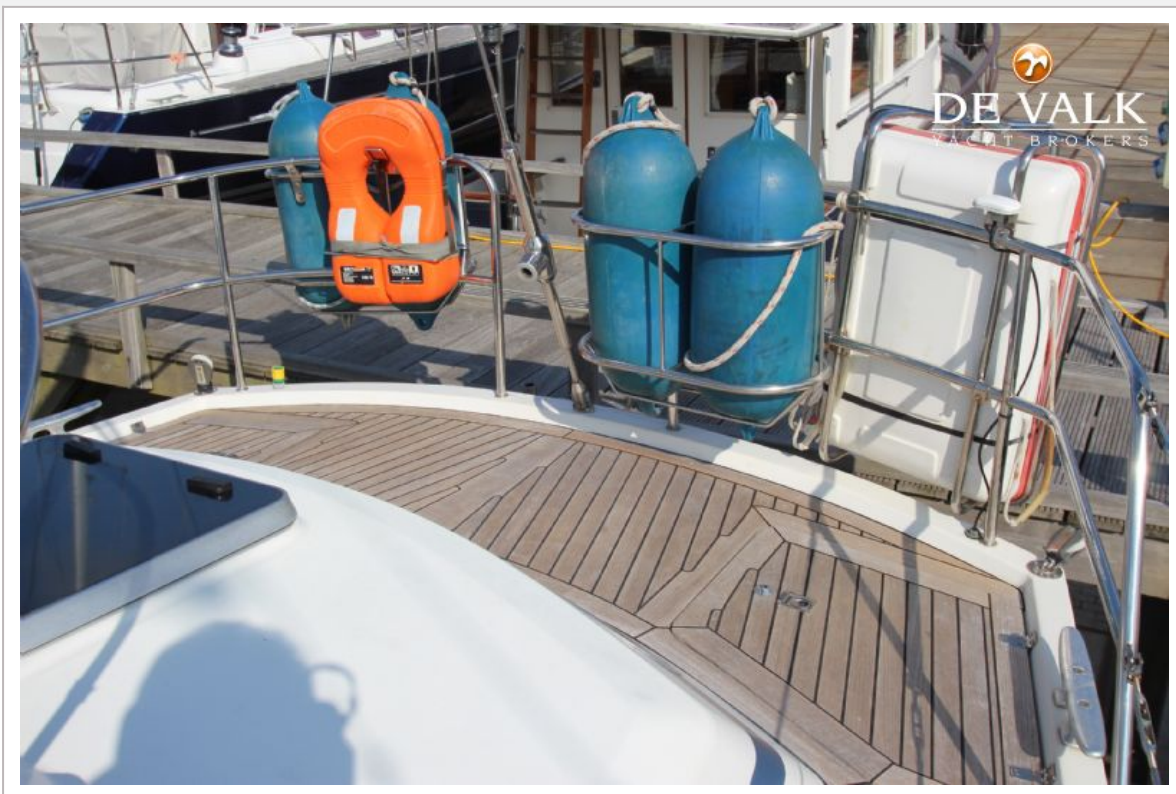
COMPROMIS 39 CLASS



COMPROMIS 39 CLASS



COMPROMIS 39 CLASS



COMPROMIS 39 CLASS



COMPROMIS 39 CLASS



COMPROMIS 39 CLASS



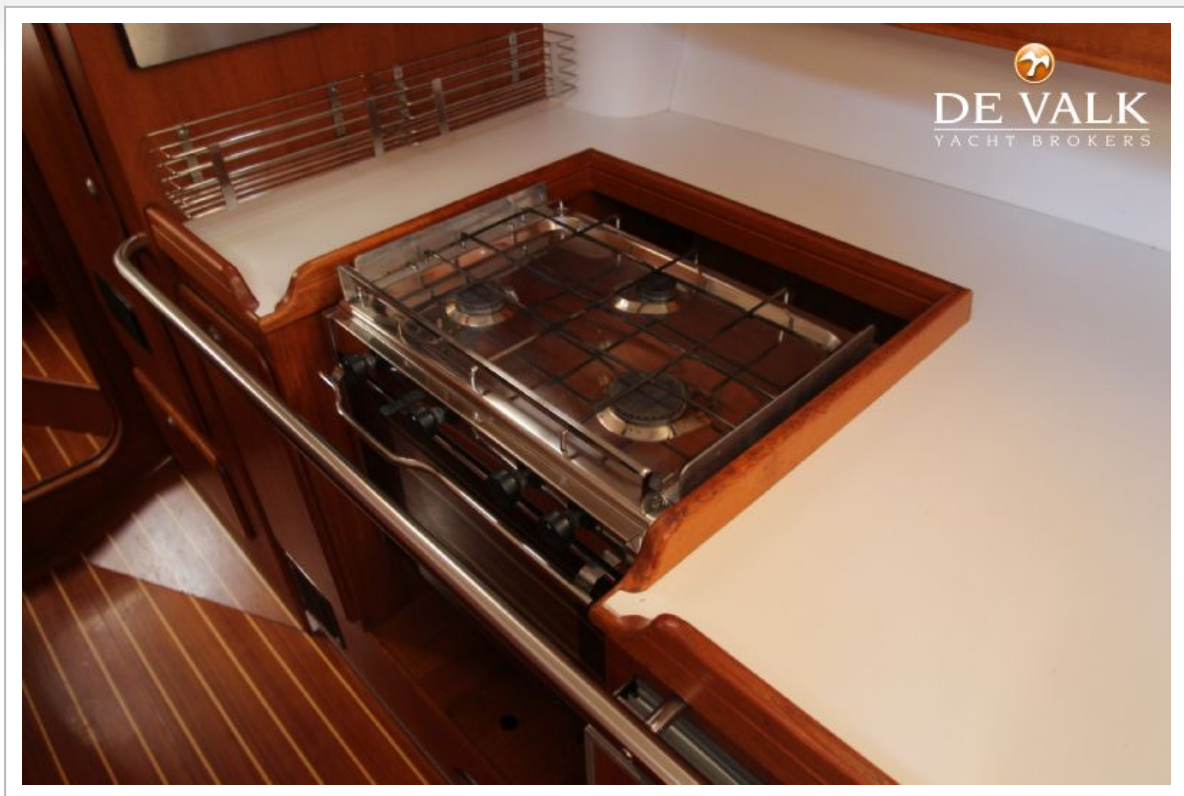
COMPROMIS 39 CLASS



COMPROMIS 39 CLASS



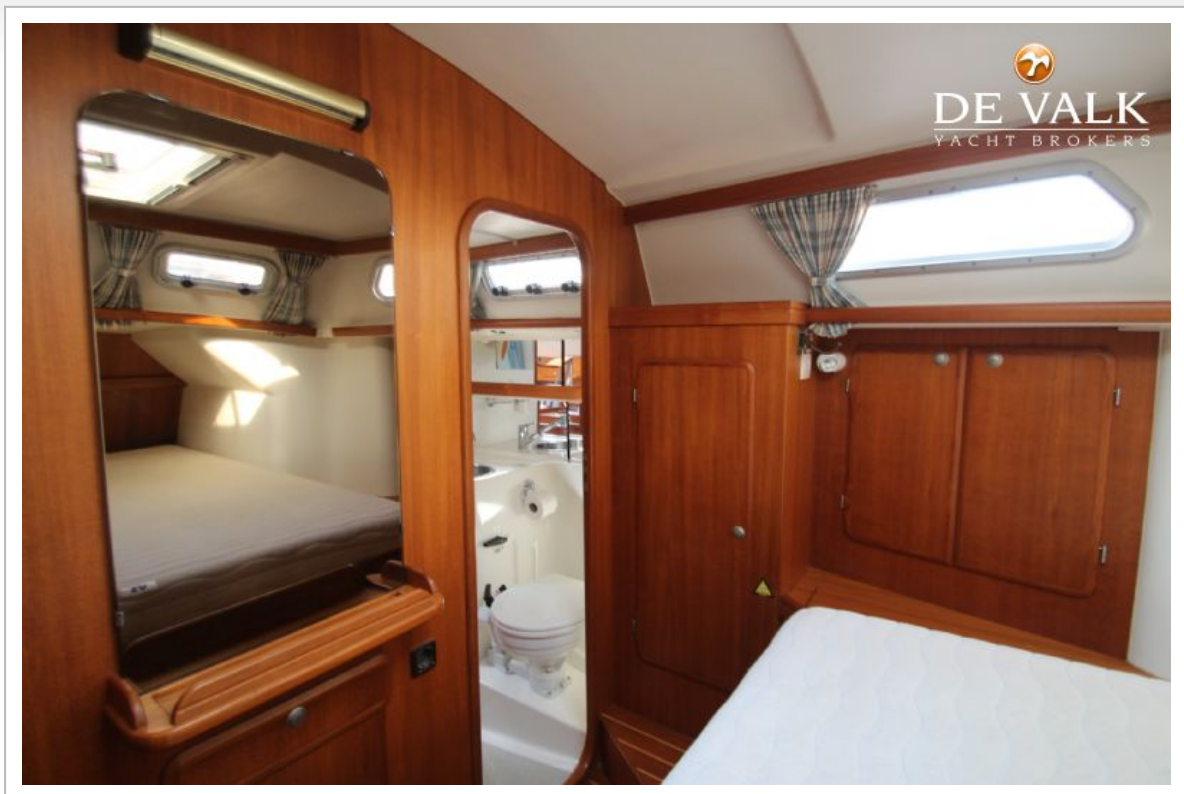
COMPROMIS 39 CLASS



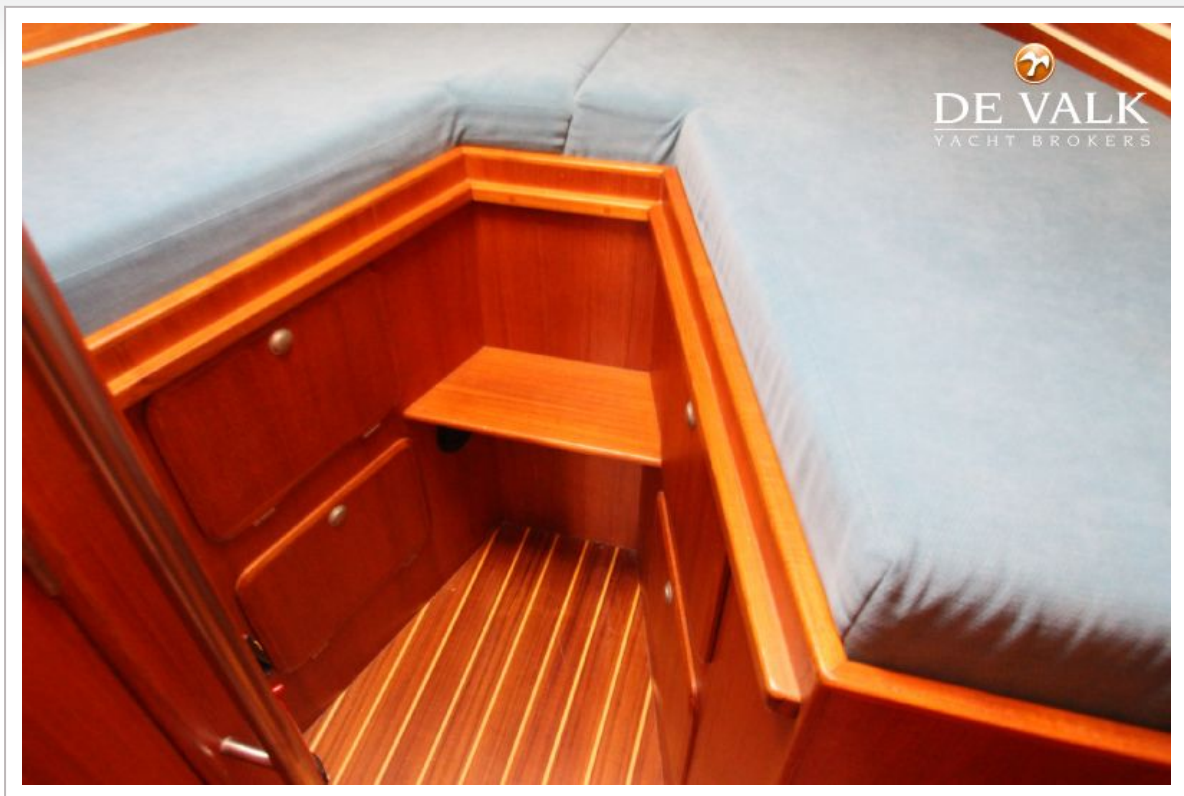
COMPROMIS 39 CLASS



COMPROMIS 39 CLASS



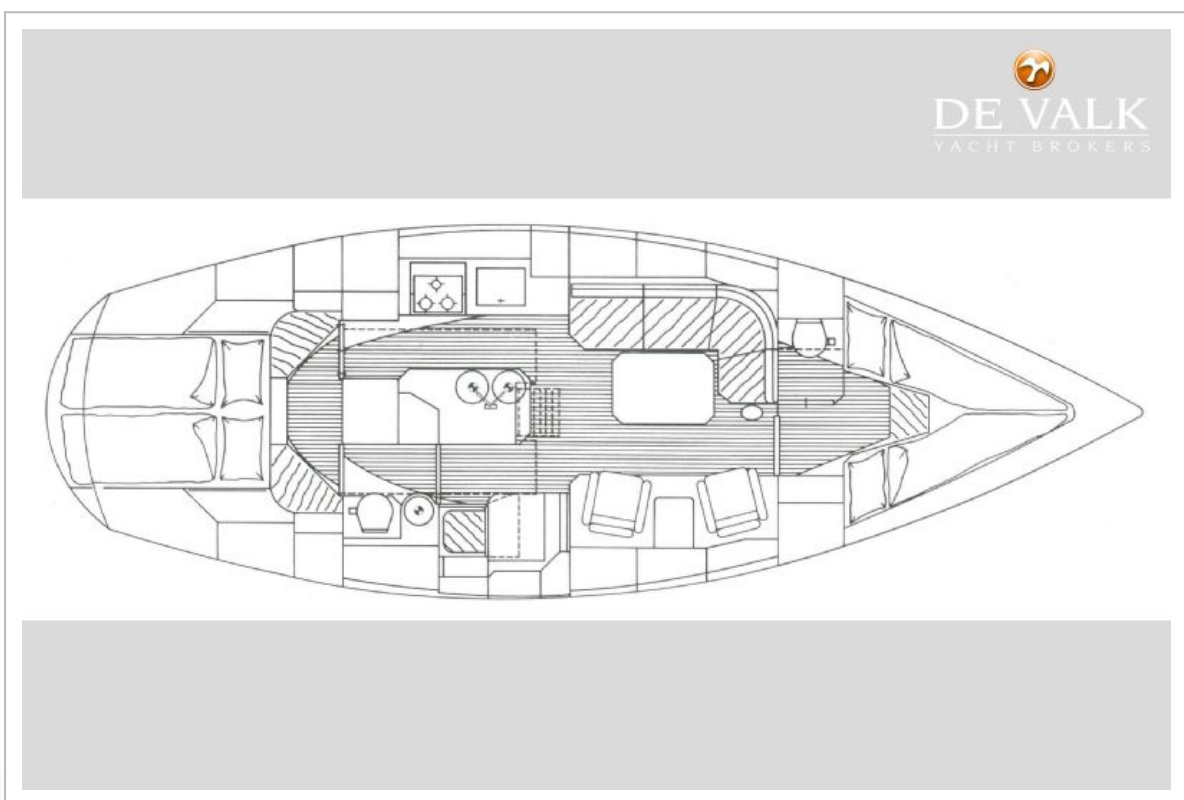
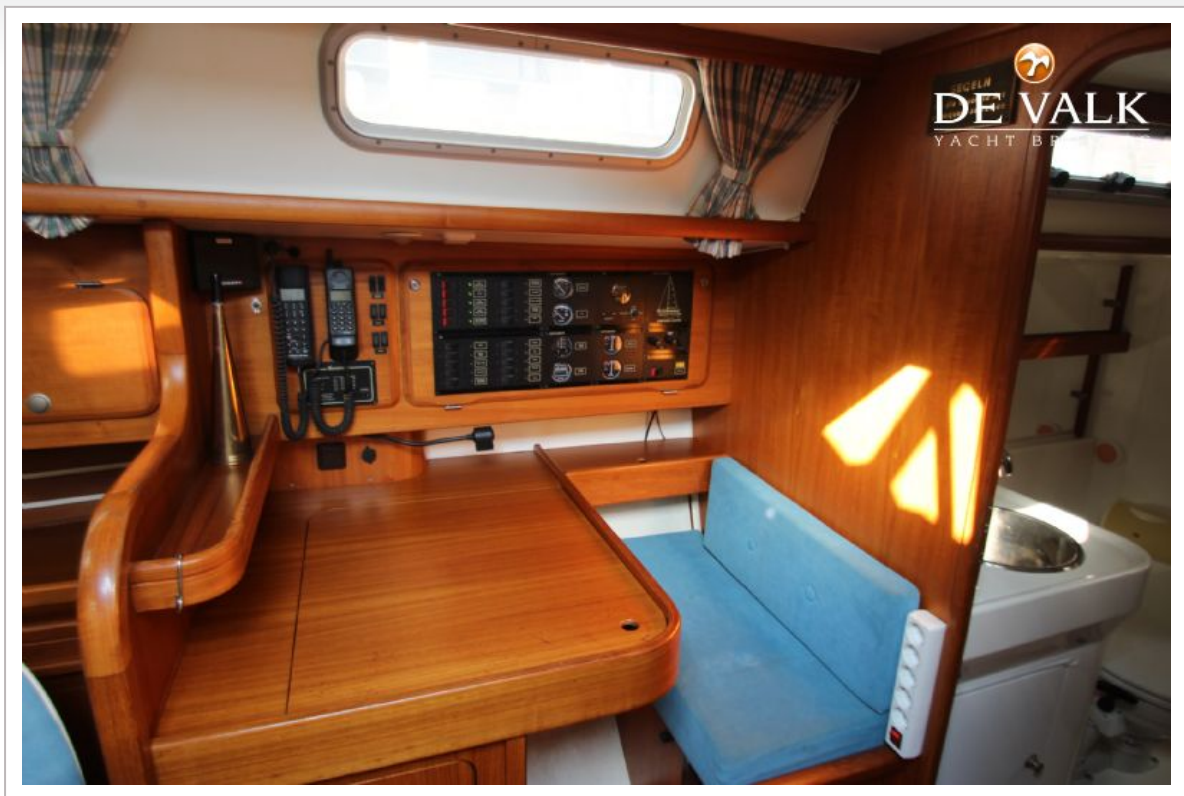
COMPROMIS 39 CLASS



COMPROMIS 39 CLASS

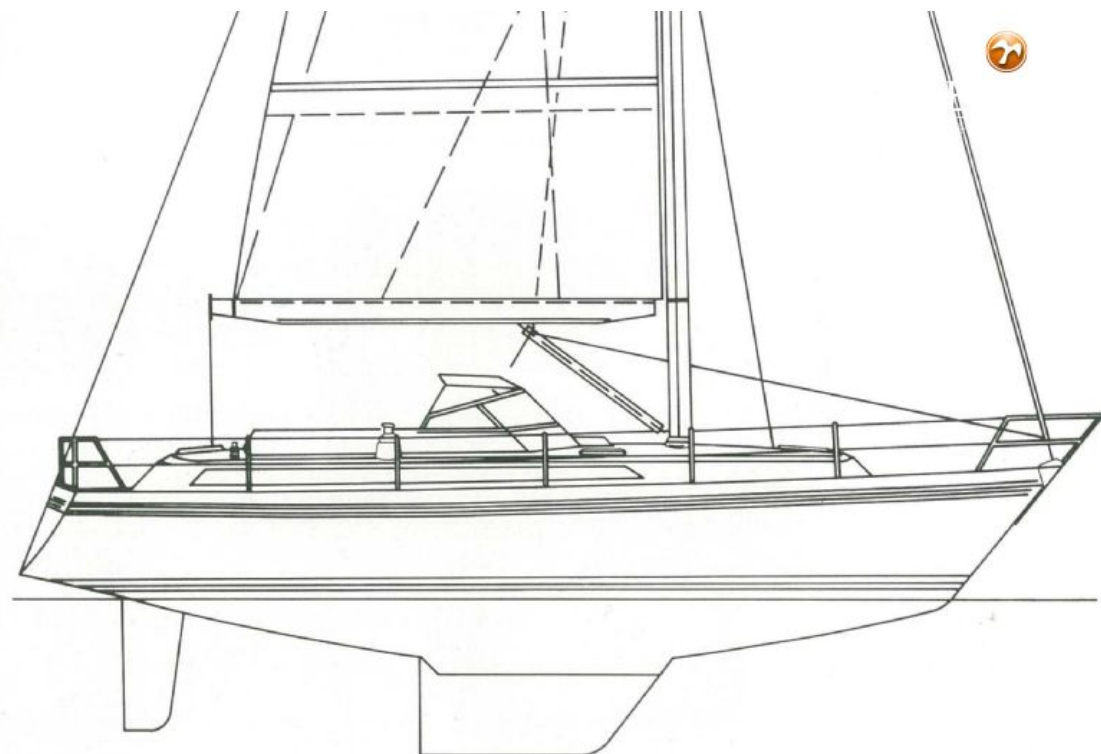
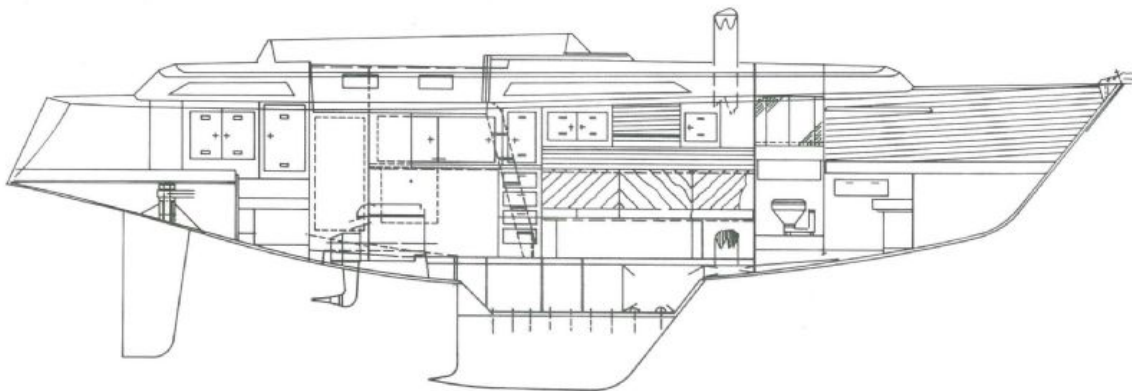


COMPROMIS 39 CLASS



COMPROMIS 39 CLASS


DE VALK
YACHT BROKERS



COMPROMIS 39 CLASS

