



DE VALK
YACHT BROKERS



J-BOATS 44-47



DE VALK
YACHT BROKERS

BROKERAGE | CHARTER | BERTHS | FINANCE | INSURANCE | YACHT MANAGEMENT

BROKER'S COMMENTS

Beautiful one-off J44-47. When you are looking for a fast and dependable cruiser with a striking appearance, this J44-47 may be the yacht for you. May it be long distance offshore cruising or fast weekend cruises, this J44-47 has proven her self on many occasions to be fast, reliable, safe and comfortable.

Marc Weijenberg

SPECIFICATIONS

Dimensions	14.35 x 4.25 x 2.10 (m)	Builder	Tillotson Pearson Inc.
Built	1991	Cabins	2
Material	GRP	Berths	7
Engine(s)	1 x Yanmar 4JH2TE diesel	Hp/Kw	57.00 (hp), 41.90 (kw)
Asking price	sold (VAT)	Lying	elsewhere / Not at sales office

CONTACT

Sales office	De Valk Sint Annaland B.V.	Telephone	+31 (0)166 601 000
Address	Koelhuisweg 4 4697 RM Sint Annaland NL	E-mail	sintannaland@devalk.nl

DISCLAIMER

These particulars are given in good faith as supplied but cannot be guaranteed.



GENERAL

Model	J-BOATS 44-47
Type	sailing yacht
LOA (m)	14,35
LWL (m)	11,80
Beam (m)	4,25
Draft (m)	2,10
Air draft (m)	22,00
Headroom (m)	1,94
Year built	1991
Builder	Tillotson Pearson Inc.
Country	U.S.A.
Designer	Rod Johnstone
Displacement (t)	12
Hull material	GRP
Hull colour	blue
Hull shape	roundbilged
Keel type	bulb keel
Superstructure material	GRP
Rubbing strake	stainless steel
Deck material	GRP
Deck finish	anti-slip paint
Cockpit deck finish	teak
Dorades	stainless steel 4 x
Window material	polycarbonate
Portholes	aluminum
Fuel tank (litre)	stainless steel 200 + 70 ltr heater tank
Freshwater tank (litre)	polyethylene 200 (extra optional tank can be fitted)
Blackwater tank (litre)	Installation prepared
Wheel steering	cable steering Destroyer type + leather cover
Emergency tiller	yes



Extra info

Lewmar deckhatches Hull professionally spray painted Partially vacuum-bagged construction by J/Boats-TPI USA (more than the usual J/Boats parts)

ACCOMMODATION

Cabins	2
Berths	7
Interior	teak
Floor	teak and holly
Saloon	with two settee's and pilotberth
Headroom saloon (m)	1,94
Heating	diesel ducted hot air Eberspaecher D5L 4800 watt
Chart table	full size with folding seat
Galley	yes
Countertop	plastic
Sink	stainless steel 2 x
Cooker	calor gas Force 10 3 burner
Oven	Force 10
Fridge	12v Combicool
Hot water system	220V + engine 45 ltr boiler
Water pressure system	electrical
Owners cabin	double bed
Bed length (m)	2,00/1,85 x 1,45
Wardrobe	hanging/drawers/shelves
Bathroom	en suite
Toilet	en suite
Toilet system	electric
Wash basin	in the bathroom
Shower	en suite Seperate
Guest cabin 1	double bed 2,00 x 1,35 mtr
Wardrobe	hanging and drawers
Bathroom	shared



Toilet	shared
Toilet system	electric
Wash basin	in the bathroom
Shower	shared
Extra info	Double berth in fore and aft cabin Pilot-berth on portside in the salon Two extra berths on the salon settees The interior is very well taken care of and built in blonde Teak with lots of practical and nice details. The interior has ample headroom and lots of stowage space throughout.

MACHINERY

No of engines	1
Make	Yanmar
Type	4JH2TE
HP	57,00
kW	41,90
Fuel	diesel
Year installed	1991
Maximum speed (kn)	8
Cruising speed (kn)	7
Consumption (l/hr)	4
Engine cooling system	freshwater heat exchanger
Drive	shaft
Engine controls	bowden cable
Gearbox	mechanical Kanzaki/Hurth
Bowthruster	electric RMC Marine retractable
Exhaust	watercooled
Propeller type	feathering Maxprop
Propeller blades	3
Propeller shaft material	stainless steel
Shaft lubrication	water + Volvo Seal (2013)
Manual bilge pump	1 x



Electric bilge pump	1 x
Electrical installation	12/220v
Generator	wet exhaust Mastervolt Whisper 3,5 kW (2009)
Running hours generator	yes
Start battery	1 x (2011)
Service battery	for winches 3 x (2011)
Bowthruster battery	1 x (2010)
Battery monitor	Mastervolt BTM III
Battery charger	Mastervolt IVO Smart 12/50amp
Shorepower	with cable
Extra info	Heavy duty 12v alternator

NAVIGATION

Compass	Plastimo Offshore
Depth sounder	Brookes & Gatehouse Hydra 2000
Log	Brookes & Gatehouse Hydra 2000
Windset	Brookes & Gatehouse Hydra 2000
Repeater	mast fitted 3 x Brookes & Gatehouse 20/20 displays
VHF	Icom IC-M601 + DSC
Autopilot	+ remote Raymarine ST7001
Radar	JVC 1000
GPS	Philips Mk8
Plotter	Simrad DS400 + Simrad CR40
Navtex	Furuno navtex NX300
Electronic chart(s)	2 x (updated 2012)

EQUIPMENT

Sprayhood with grab rail	2010
Bimini	2010
Sun awning	yes
Cockpit table	In teak



Bathing platform	yes
Boarding ladder	stainless steel
Deck shower	hot+cold
Anchor	CQR Plough Stainless/Nirosta
Anchor chain	40 mtr stainless/Nirosta
Anchor 2	Danforth Aluminum
Windlass	electrical Quick up+down
Outboard	support only
Sea railing	stainless steel
Grab rail (superstructure)	stainless steel
Railing side opening gates	2 x
Pushpit	yes
Pulpit	yes
Life raft	container BFA
Life raft (pers)	6 pers
Last life raft survey	2010
Lifebuoy	1 x
Danbuoy	1 x
Radar reflector	yes
Fenders	yes
Mooring lines	yes
Spare parts	for engine
TV	Nikkei flatscreen
TV receiver	Digitenne NL
Radio-cd player	Sony
Cockpit speakers	yes
Speakers in salon	yes
Clock - barometer	yes

RIGGING

Rigging	sloop
---------	-------



Brand mast	Sparcraft
Material mast	aluminium coated
Spreaders	4 sets
Fully battened mainsail	2007 De Boer Sails
Furling boom	Leisure Furl 2007
Genoa	2007 De Boer Sails
Genoa furler	Harken
Genoa cover	1 x
Spinnaker	1992, 1,5 oz
Reefing System	main in-boom furling
Backstay adjuster	hydraulic Navtec
Boomvang	mechanical Bamar
Primary sheet winch	electric 2 x Anderssen 62ST
Secondary sheet winch	electric 1 x Anderssen 46ST + 1 x Lewmar 44AST
Genoa sheetwinches	2 x Anderssen 62ST
Halyard winches	1 x electric 2 x Anderssen 52ST
Multifunctional winches	2 x Barent 27-48ST
Spi-pole	carbon
Extra info	<p>While the J 44-47 is a powerful cruiser, the owner had a furling boom and various electric winches fitted and the yacht became very well to handle by a small crew. A crew that really enjoys sailing at it's best, but also can appreciate the "mod-cons" that come with modern sailing. Already well balanced in it's original design, she is perfectly handled even at a "single handed" level. The backstays are only used in adverse conditions. Where most modern yachts struggle with more adverse conditions, the J44-47 has a much better and forgiving character. Full sails at 22-25 knots is something to experience controlling the yacht at the touch of a button.</p>



J-BOATS 44-47





J-BOATS 44-47

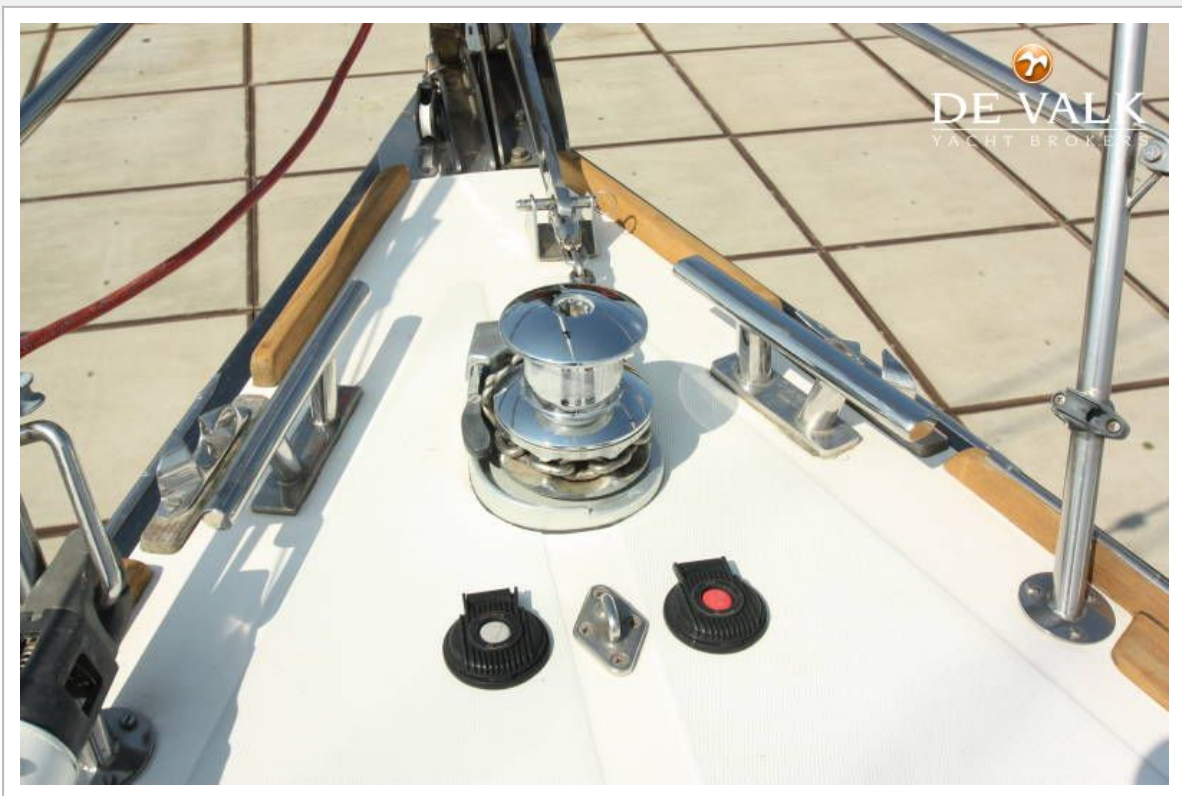




J-BOATS 44-47











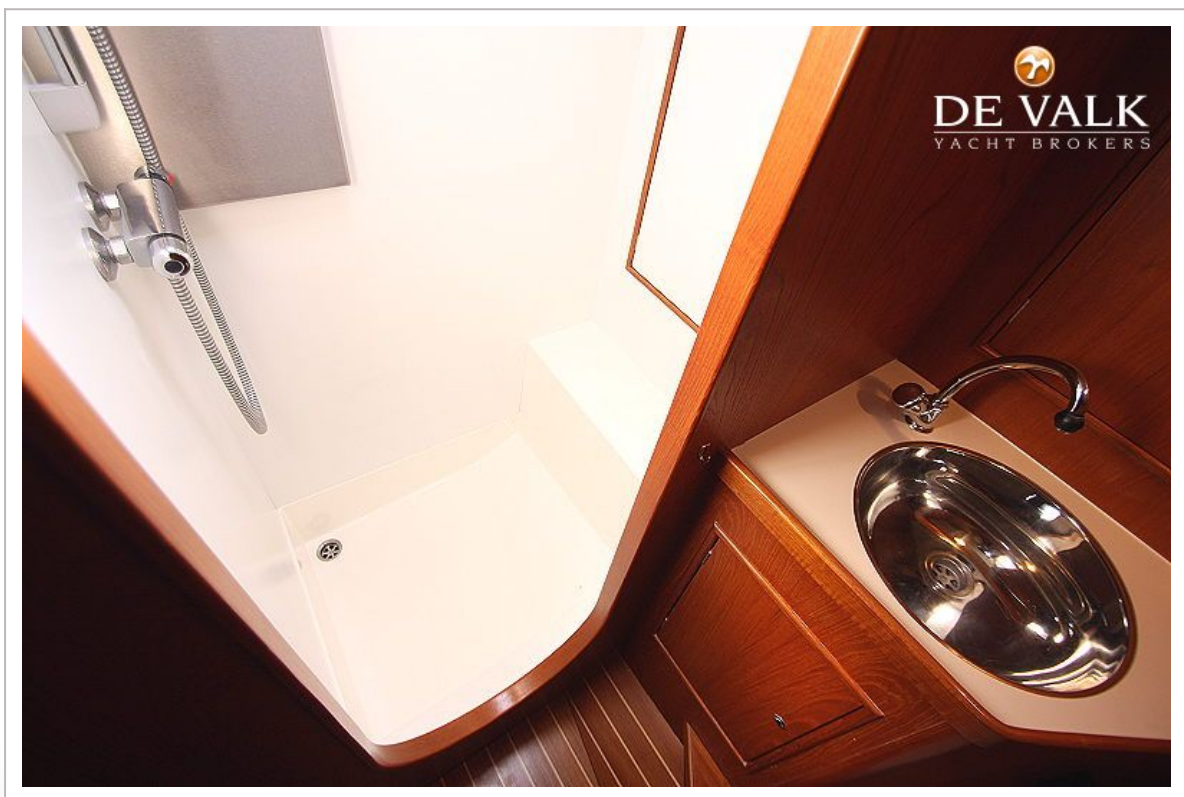
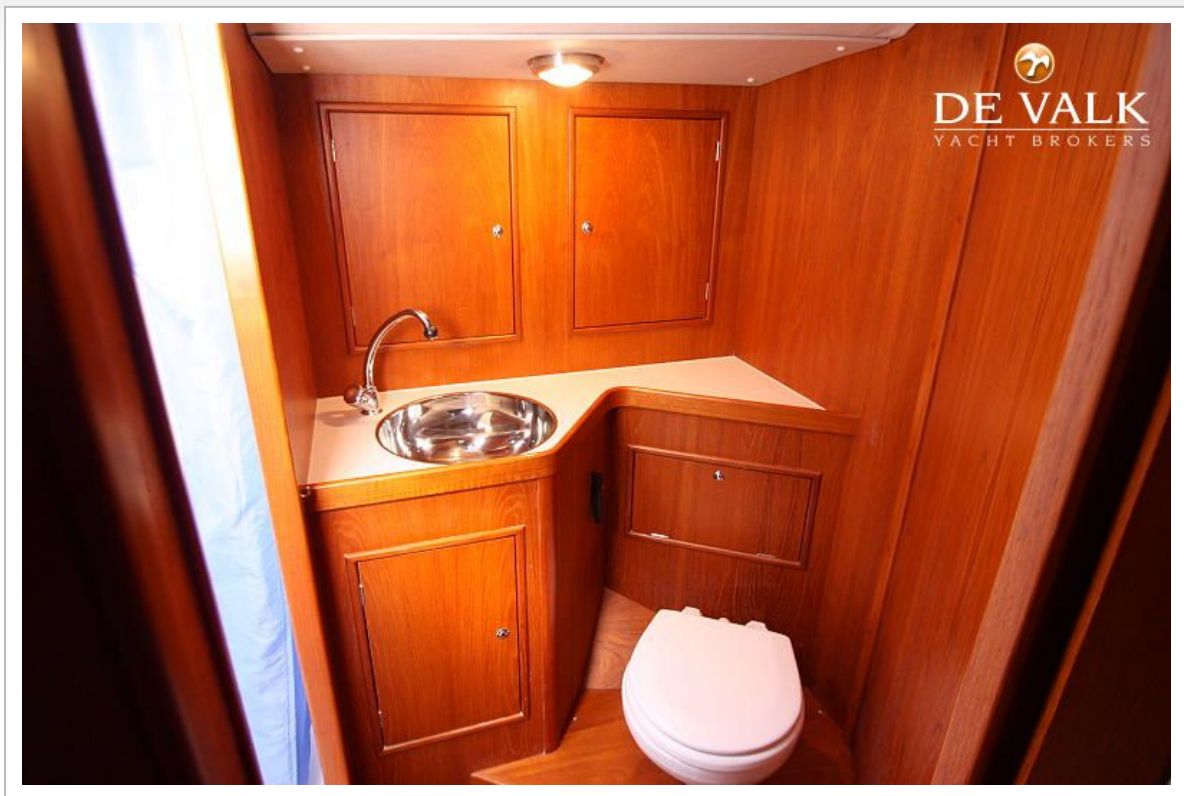
J-BOATS 44-47

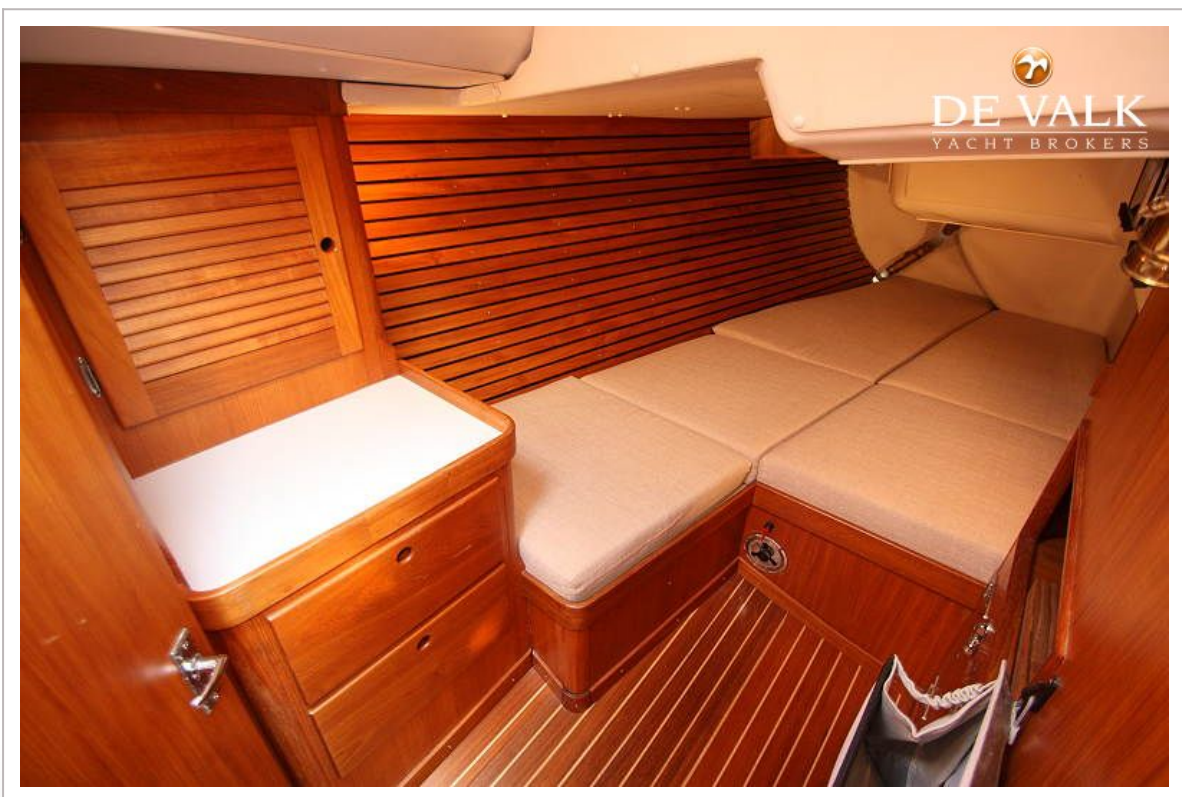




J-BOATS 44-47





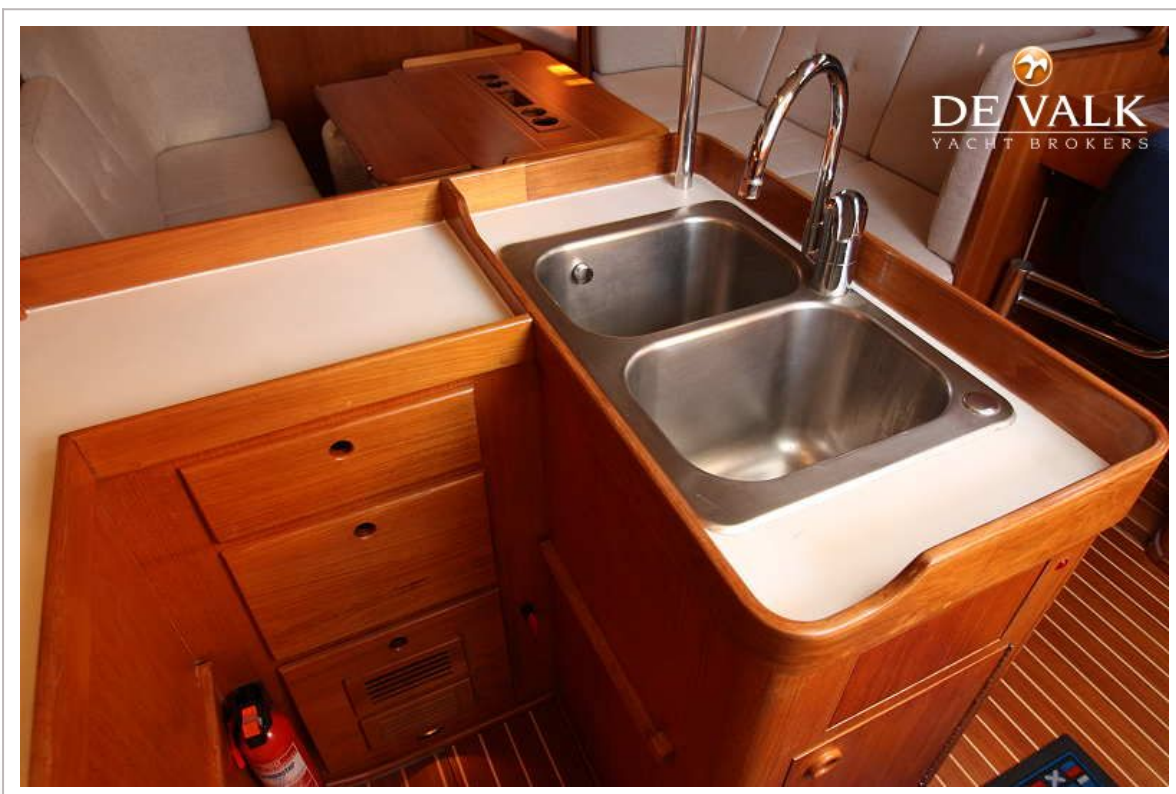


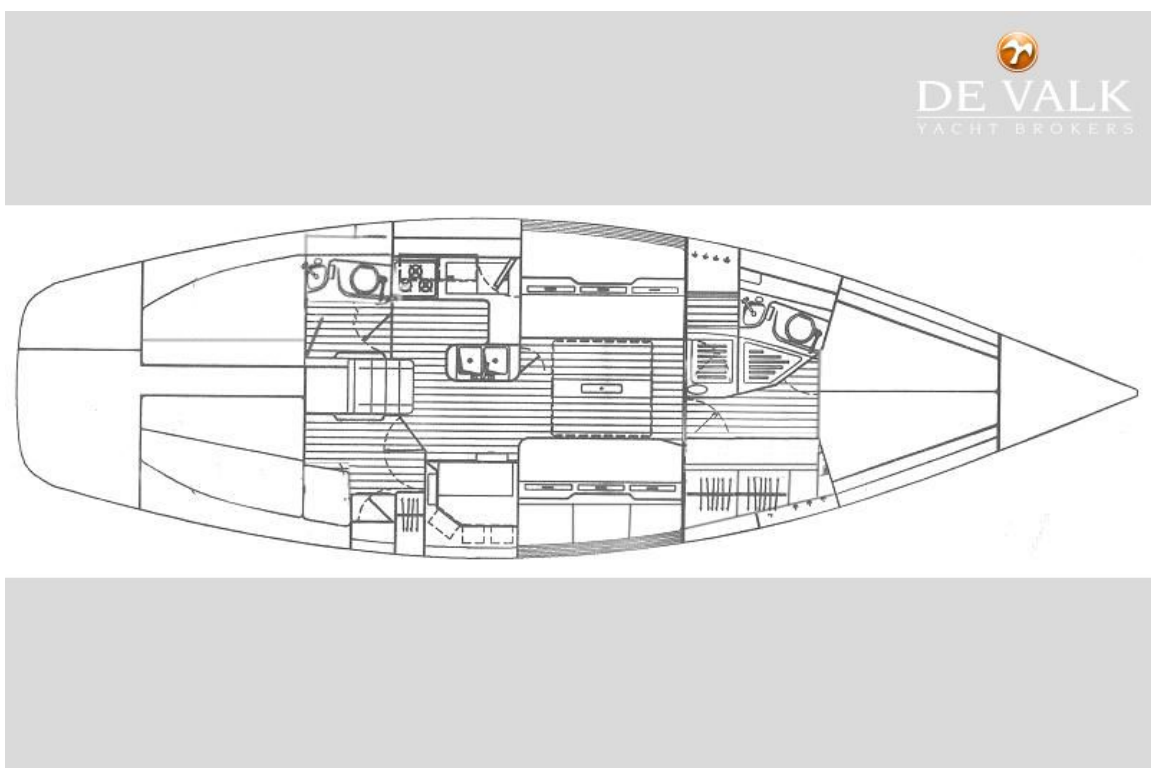




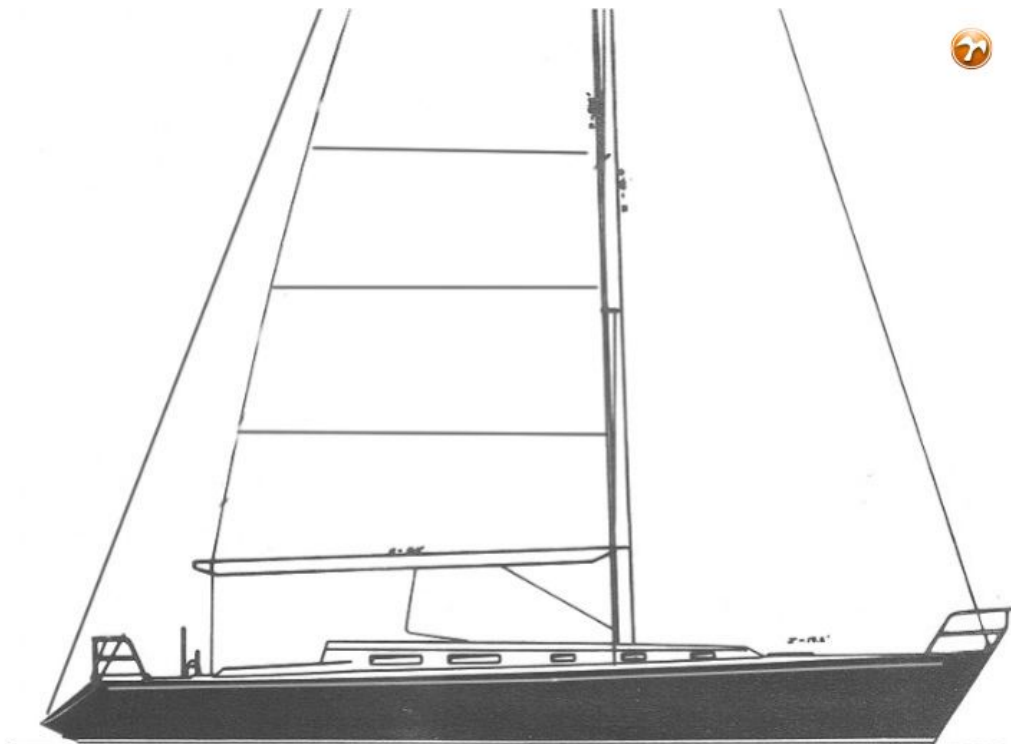
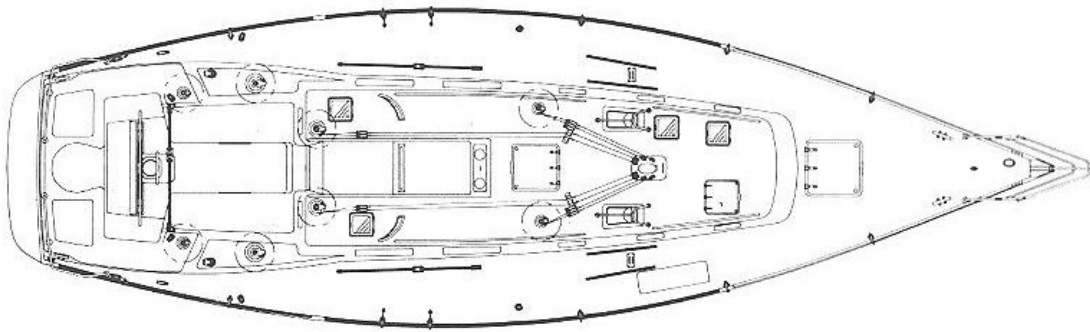
J-BOATS 44-47








DE VALK
YACHT BROKERS



J-BOATS 44-47

