



DE VALK  
YACHT BROKERS



HUTTING 49



DE VALK  
YACHT BROKERS

BROKERAGE | CHARTER | BERTHS | FINANCE | INSURANCE | YACHT MANAGEMENT

# HUTTING 49

## BROKER'S COMMENTS

This Hutting 49 has been built for her first and only owner to a very high standard. She's a true sea-going, well balanced, very strong and stable sailing yacht ready to go on any trip. She offers style, comfort and nearly perfect interior configuration makes her ideal for longer stays on board. This Hutting 49 has been meticulously maintained by her owner and is an eye-catcher in every port she visits!

*Henk Sijbranda*

## SPECIFICATIONS

<b>Dimensions</b>	14.77 x 4.25 x 1.75 (m)	<b>Builder</b>	Hutting Yachts Makkum BV
<b>Built</b>	2004	<b>Cabins</b>	3
<b>Material</b>	Aluminium	<b>Berths</b>	6
<b>Engine(s)</b>	1 x Yanmar 4 JH 3-HTBE diesel	<b>Hp/Kw</b>	100.00 (hp), 73.50 (kw)
<b>Asking price</b>	sold (VAT )	<b>Lying</b>	contact Hindeloopen

## CONTACT

<b>Sales office</b>	De Valk Hindeloopen B.V.	<b>Telephone</b>	+31 514 52 40 00
<b>Address</b>	Oosterstrand 1 8713 JS Hindeloopen NL	<b>E-mail</b>	hindeloopen@devalk.nl

## DISCLAIMER

These particulars are given in good faith as supplied but cannot be guaranteed.



## GENERAL

Model	HUTTING 49
Type	sailing yacht
LOA (m)	14,77
Beam (m)	4,25
Draft (m)	1,75
Air draft (m)	21,00
Headroom (m)	1,97
Year built	2004
Builder	Hutting Yachts Makkum BV
Country	The Netherlands
Designer	D. Koopmans / T. Hutting
Displacement (t)	20,7
Ballast (tonnes)	lead 8,5
Net tonnage	yes
CE norm	A
Hull material	aluminium
Hull colour	blue
Hull thickness (mm)	8 / 7 / 6 mm
Hull shape	S-bilged
Keel type	long keel
Superstructure material	aluminium
Superstructure (mm)	6 mm
Deck plate thickness (mm)	5 mm
Rubbing strake	aluminum
Deck material	aluminium
Deck finish	teak
Superstructure deck finish	teak
Cockpit deck finish	teak
Dorades	3x stainless steel
Window frame	aluminium Gebo



Deckhatch	4x Aluminium - Goyot
Fuel tank (litre)	aluminium 960
Level indicator (fuel tank)	VDO
Freshwater tank (litre)	aluminium 2 tanks = total of 960
Level indicator (freshwater)	2x VDO
Blackwater tank (litre)	stainless steel 100
Level indicator (blackwater)	VDO
Wheel steering	mechanical Whitlock type King Cobra
Emergency tiller	yes

## ACCOMMODATION

Cabins	3
Berths	6
Interior	teak
Floor	teak and holly
Open cockpit	yes
Saloon	yes
Headroom saloon (m)	1,97 / 1,88
Heating	diesel ducted hot air Webasto
Heating 2	Heatpol 15-16 MK - diesel
Navigation center	yes
Chart table	yes
Aft Cabin	One
Galley	yes
Countertop	corian
Sink	stainless steel Double
Cooker	calor gas Eno - 4 burner - with oven
Microwave	Bosch
Fridge	yes
Hot water system	220V + engine 30 liter boiler
Water pressure system	electrical



Manual and/or foot pump	Foot pump - fresh water
Owners cabin	double bed
Bed length (m)	1,99 / 1,47-0,95
Wardrobe	hanging and shelves
Guest cabin 1	twin single Aftcabin
Bed length (m)	2.10 - 0.76 and 2.00 - 0.70
Wardrobe	hanging and shelves
Guest cabin 2	v-bed Fore cabin
Bed length (m)	1.95 - 0.50
Wardrobe	hanging and shelves
Bathroom	yes
Toilet	yes
Toilet system	electric
Wash basin	yes
Shower	yes

## MACHINERY

No of engines	1
Make	Yanmar
Type	4 JH 3-HTBE
HP	100
kW	73,50
Fuel	diesel
Year installed	2004
Maximum speed (kn)	7,5
Cruising speed (kn)	7
Consumption (l/hr)	4-5
Engine hours	1940,6
Engine cooling system	freshwater heat exchanger
Drive	shaft
Engine controls	bowden cable



<b>Gearbox</b>	hydraulic PRM 260 D / 3:1
<b>Bowthruster</b>	electric Rheinstrom
<b>Exhaust</b>	watercooled
<b>Propeller type</b>	Nibral 24"
<b>Propeller blades</b>	3
<b>Propeller shaft material</b>	stainless steel
<b>Shaft lubrication</b>	oilbath
<b>Manual bilge pump</b>	Gusher 30
<b>Electric bilge pump</b>	2x Henderson
<b>Electrical installation</b>	12 / 24 / 220
<b>Generator</b>	Mastervolt 3,5 Kwa
<b>Running hours generator</b>	154
<b>Start battery</b>	1x 85Ah
<b>Service battery</b>	2x 200Ah - 12Volt
<b>Generator battery</b>	1x 85Ah
<b>Bowthruster battery</b>	2x 200AH - 24Volt also for Windlass
<b>Battery monitor</b>	2x Mastervolt Monitor BTM-1
<b>Battery charger</b>	Mastervolt
<b>Shorepower</b>	with cable
<b>Insulation transformer</b>	Mastervolt IVET-D 16 / 3,5

## NAVIGATION

<b>Compass</b>	Whitlock
<b>Depth sounder</b>	Data from: 2x B&G Hydra 2000
<b>Log</b>	Data from: 2x B&G Hydra 2000 and B&G Boat speed
<b>Windset</b>	B&G Magnified Wind, Wind Speed and Synchro
<b>VHF</b>	with extra speaker in cockpit Furuno FM2721
<b>Autopilot</b>	B&G Hydra Pilot
<b>Radar/GPS/plotter</b>	Furuno 1833C
<b>Navtex</b>	Furuno NX-300



## EQUIPMENT

Sprayhood	yes
Sprayhood with grab rail	yes
Boarding ladder	stainless steel
Anchor	Bruce 30kg
Anchor chain	40mtr
Anchor 2	Bruce 14kg
Anchor chain	10mtr with 40mtr lijn
Windlass	electrical Maxwell 3500
Capstan	yes
Sea railing	wire Stainless steel
Grab rail (superstructure)	teak
Pushpit	yes
Pulpit	yes
Fenders	yes
Mooring lines	yes
Radio-cd player	JVC
Speakers in salon	yes

## RIGGING

Rigging	sloop-cutter
Standing rigging	wire
Brand mast	Holland Spar
Material mast	aluminium
Spreaders	2 pair
Mainsail	Dutchman system - 49,5 m²
Mainsail cover	yes
Battcars	yes
Fully battened mainsail	yes
Cutterstay	Dacron Classic look 25.8m²
Genoa	Dacrom Classic look - 55,8m²



Genoa furler	Reckmann
Cutter furler	Reckmann
Gennaker	114m <sup>2</sup> with snuffer
Stormjib	6m <sup>2</sup>
Reefing System	quick-one-line-reefing
Backstay adjuster	mechanical Barbarossa
Boomvang	gasspring Holland Spar
Primary sheet winch	2x andersen 52ST two speed
Genoa sheetwinches	2x Andersen 68ST two speed
Halyard winches	2x Andersen 46ST two speed on mast (one electric)
Reefing winch	1x Andersen 40ST on mast
Multifunctional winches	2x Andersen 46ST two speed
Winchcovers	yes
Spi-pole	aluminium





# HUTTING 49





## HUTTING 49







## HUTTING 49



## HUTTING 49





# HUTTING 49







## HUTTING 49

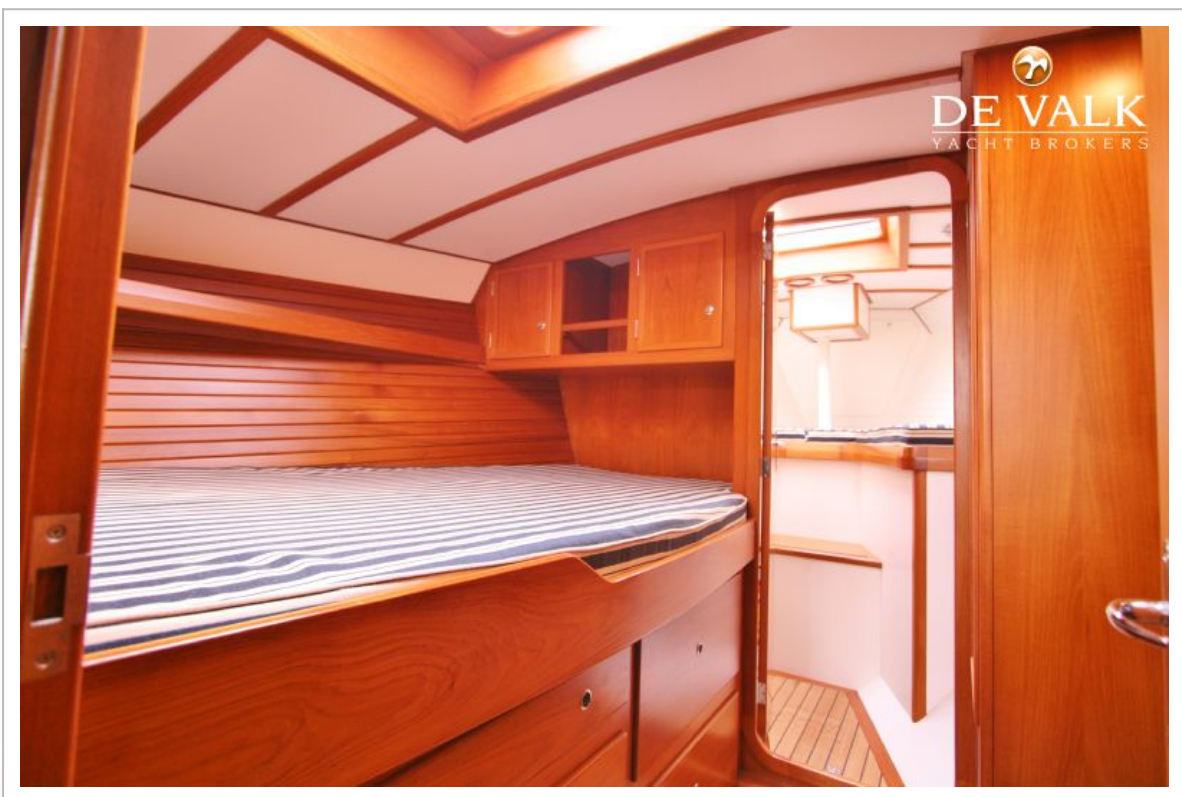
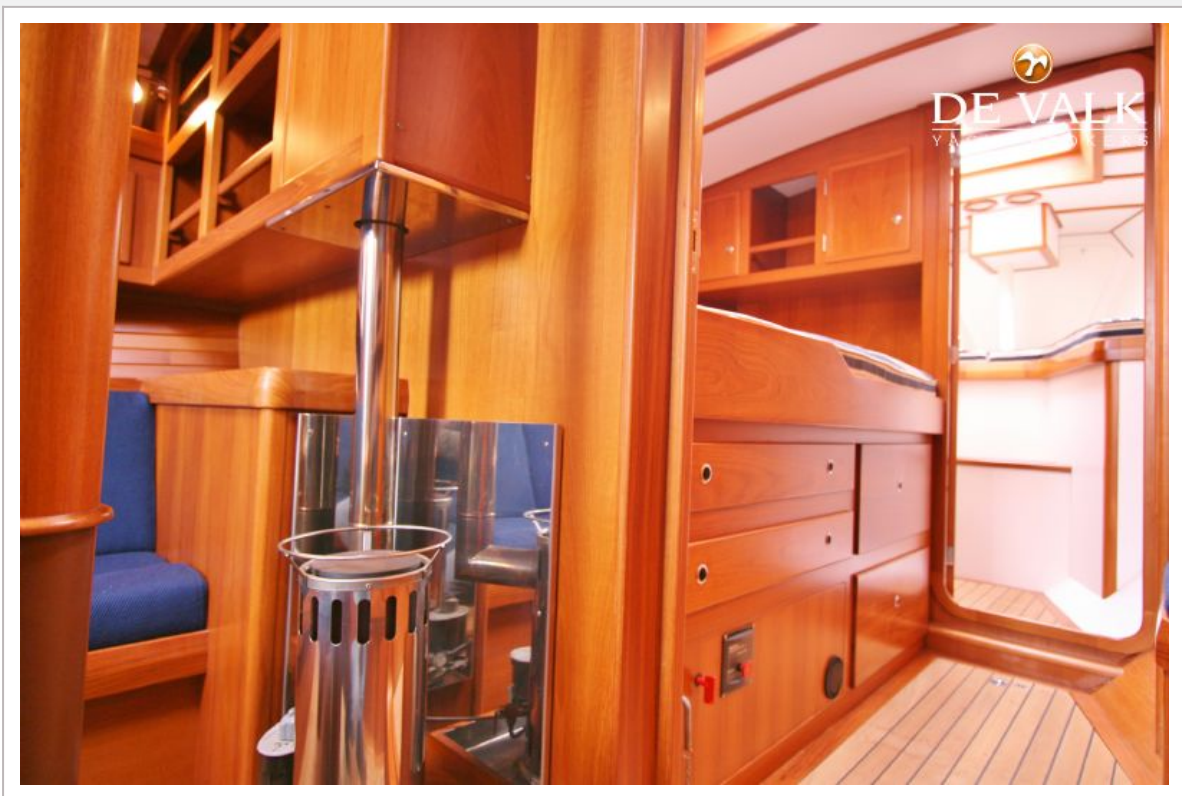


## HUTTING 49

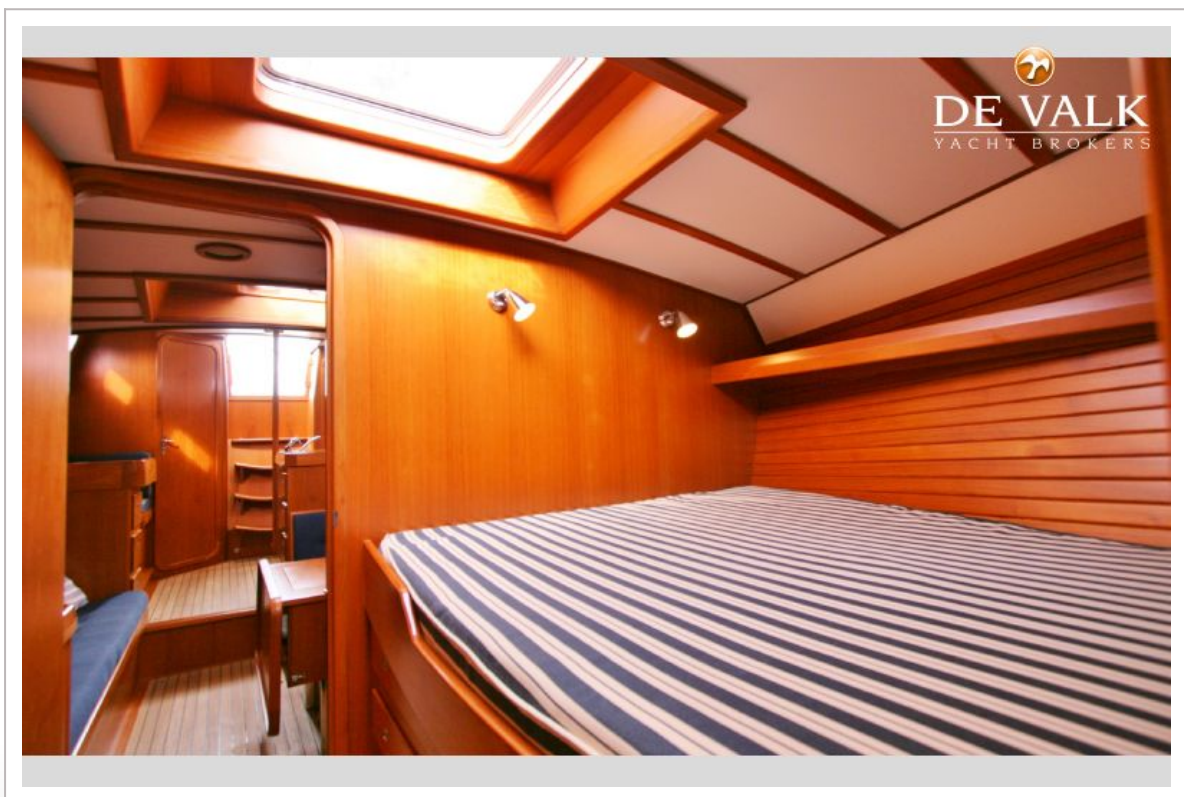
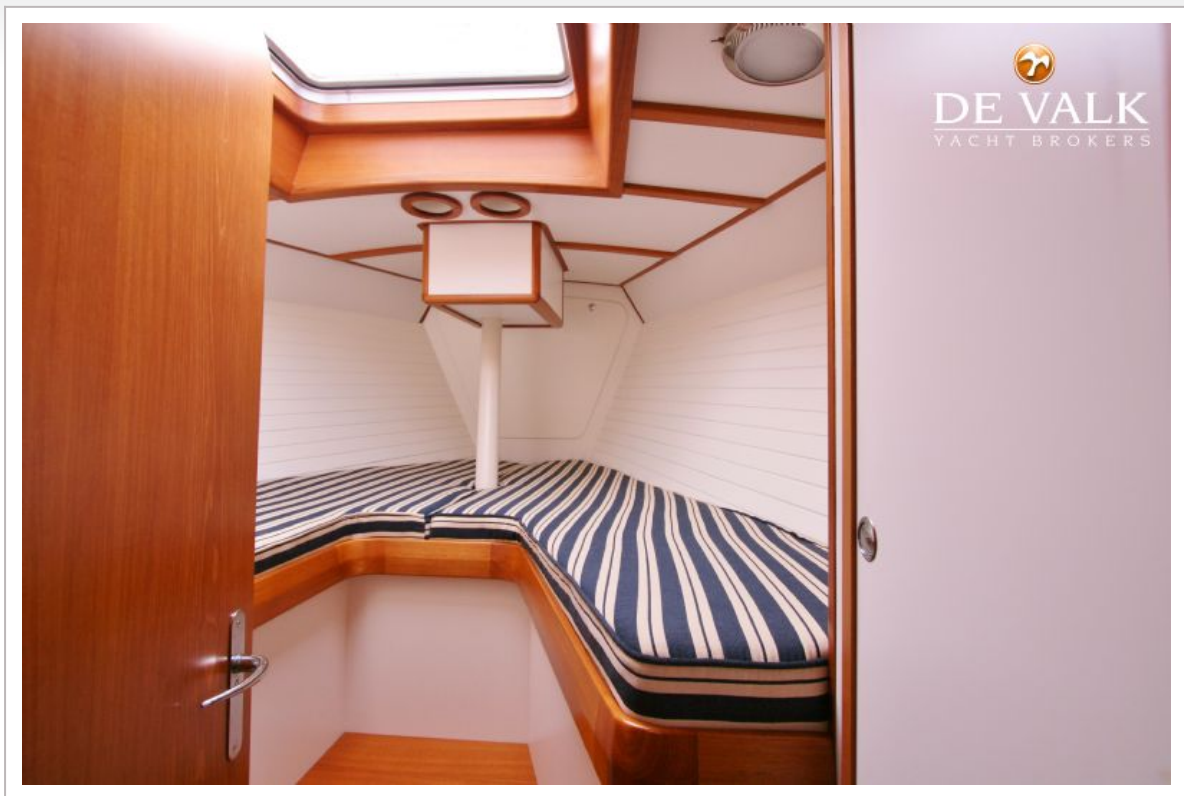




## HUTTING 49



## HUTTING 49





## HUTTING 49



## HUTTING 49





## HUTTING 49



