



DE VALK
YACHT BROKERS



HALLBERG RASSY 352



DE VALK
YACHT BROKERS

BROKERAGE | CHARTER | BERTHS | FINANCE | INSURANCE | YACHT MANAGEMENT

HALLBERG RASSY 352

BROKER'S COMMENTS

Introduced in 1979 as the yacht for the future, the HR 352 is probably the most successful model of the famous Swedish yard. The much appreciated Swedish craftsmanship and quality remains plus seaworthy, sturdy and well balanced design by Olle Enderlein. Below decks non compromising accommodations for family and friends. The inside woodwork has been kept nicely and n third ownership carefully handled. A yacht that will bring her crew safely to any port of call. Become part of the Hallberg Rassy family, you will like it.

Marc Weijenberg

SPECIFICATIONS

Dimensions	10.54 x 3.38 x 1.67 (m)	Builder	Hallberg Rassy Varv AB
Built	1985	Cabins	2
Material	GRP	Berths	7
Engine(s)	1 x Volvo Penta MD21A Diesel	Hp/Kw	52.00 (hp), 38.22 (kw)
Asking price	sold (VAT)	Lying	at sales office

CONTACT

Sales office	De Valk Sint Annaland B.V.	Telephone	+31 (0)166 601 000
Address	Koelhuisweg 4 4697 RM Sint Annaland NL	E-mail	sintannaland@devalk.nl

DISCLAIMER

These particulars are given in good faith as supplied but cannot be guaranteed.



GENERAL

Model	HALLBERG RASSY 352
Type	sailing yacht
LOA (m)	10,54
LWL (m)	8,70
Beam (m)	3,38
Draft (m)	1,67
Air draft (m)	15,00
Headroom (m)	1,89
Year built	1985
Builder	Hallberg Rassy Varv AB
Country	Sweden
Designer	Olle Enderlein
Displacement (t)	6,7
Ballast (tonnes)	cast iron 3
Hull material	GRP
Hull colour	white
Hull shape	S-bilged
Keel type	fin keel
Superstructure material	GRP
Rubbing strake	yes
Deck material	GRP
Deck finish	teak
Superstructure deck finish	non-skid moulded in
Cockpit deck finish	teak
Window frame	aluminium
Window material	polycarbonate
Deckhatch	yes
Portholes	aluminium
Fuel tank (litre)	stainless steel 85 ltr
Fuel tank 2 (litre)	150 ltr (defect)



Freshwater tank (litre)	GRP 300
Blackwater tank (litre)	stainless steel
Blackwater tank extraction	Uw. line
Wheel steering	cable steering Edson
Emergency tiller	yes
More info on paintwork	Blue striping repainted 2015
Extra info	Lloyds Hull Construction Certificate
Extra info	150 ltr fuel tank not in use
Extra info	Covers for deckhatches

ACCOMMODATION

Cabins	2
Berths	7
Interior	mahogany
Floor	teak and holly
Saloon	with L-shape settee
Headroom saloon (m)	1,89
Heating	diesel ducted hot air Eberspächer D3L
Chart table	yes
Aft Cabin	yes
Dinette to convert into berth	2 x single berth
Galley	L-shape
Countertop	plastic
Sink	stainless steel
Cooker	calor gas Optimus 3-burner
Oven	Optimus
Fridge	toploader Danfoss 12v
Hot water system	220V + engine
Water pressure system	electrical
Owners cabin	double bed + single bed Aft / achter / hinten
Bed length (m)	+ 2,05 x 0,70 2,05 x 1,10



Wardrobe	hanging/drawers/shelves
Bathroom	shared I
Toilet	shared
Toilet system	manual
Wash basin	in the bathroom
Shower	shared
Guest cabin 1	v-bed Front / voor / vorne
Bed length (m)	2,05 x 0,60
Wardrobe	hanging/drawers/shelves
Extra info	matress support

MACHINERY

No of engines	1
Make	Volvo Penta
Type	MD21A
HP	52,00
kW	38,22
Fuel	diesel
Year installed	1985
Maximum speed (kn)	8
Cruising speed (kn)	6
Consumption (l/hr)	3,5
Engine hours	3502
Engine cooling system	freshwater heat exchanger
Drive	shaft
Engine controls	bowden cable
Gearbox	mechanical Volvo Penta
Exhaust	watercooled
Propeller type	fixed
Propeller blades	3
Propeller shaft material	stainless steel



Shaft lubrication	water
Manual bilge pump	yes
Electrical installation	12/220v
Start battery	1 x (2015)
Service battery	2 x 100ah (2015)
Battery charger	WT Smartcharger 25amp (2012)
Shorepower	with cable
Extra info	Renewed; heatexchanger, fuelpump, cooling waterpump.
Extra info	Somes spares

NAVIGATION

Compass	needs service Sestrel Major
Electric compass	via autopilot
Depth sounder	VDO
Log	VDO
Windset	VDO
VHF	Debeg 6310
Autopilot	Raymarine 5001
Rudder angle indicator	via autopilot
GPS	Garmin 120XL
Searchlight	yes

EQUIPMENT

Fixed windscreen	yes
Sprayhood with grab rail	yes
Cockpit cover	yes
Winter cover	yes
Cockpit cushions	yes
Cockpit table	yes
Boarding ladder	stainless steel
Bow ladder	yes



Anchor	CQR Plough
Anchor chain	25 mtr
Windlass	manual
Outboard support	yes
Sea railing	stainless steel
Grab rail (superstructure)	teak
Pushpit	yes
Pulpit	yes
Lifejackets	4 x
Lifebuoy	yes
Fenders	yes
Mooring lines	yes
Radio-cd player	JVC
Speakers in cabin	yes
Clock - barometer	yes

RIGGING

Rigging	sloop
Standing rigging	wire
Brand mast	Seldén
Material mast	aluminium
Spreaders	1 set
Mainsail	(1985)
Mainsail cover	yes
Jib II	39m2 (1985)
Genoa I	(1985)
Genoa furler	Furlex
Genoa cover	yes
Reefing System	slabreefing
Boomvang	tackle
Genoa sheetwinches	2 x Lewmar 43ST



HALLBERG RASSY 352

Halyard winches	3 x Lewmar 16ST
Spinnaker winch	2 x Lewmar 40C
Reefing winch	1 x Lewmar
Spi-pole	aluminium
Isolated backstay	yes
Extra info	alum. turnbuckle covers



HALLBERG RASSY 352



HALLBERG RASSY 352



HALLBERG RASSY 352



HALLBERG RASSY 352



HALLBERG RASSY 352



HALLBERG RASSY 352



HALLBERG RASSY 352



HALLBERG RASSY 352



HALLBERG RASSY 352



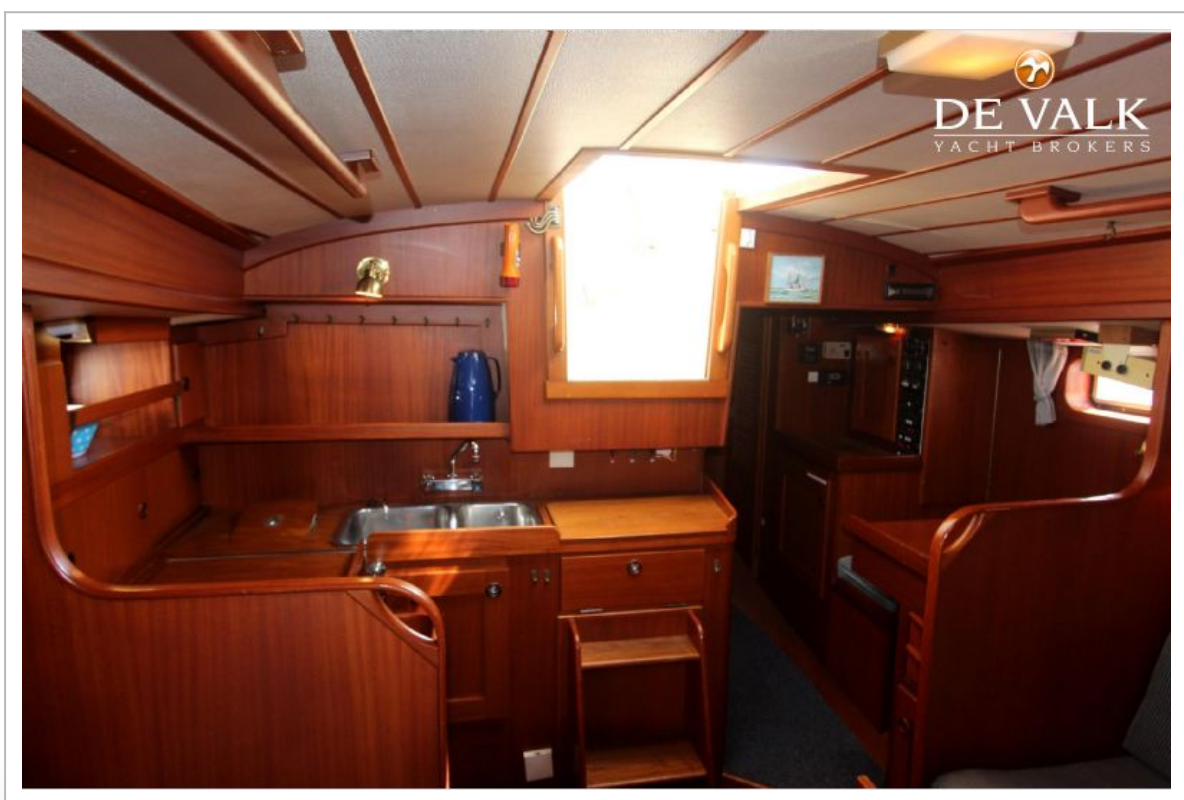
HALLBERG RASSY 352



HALLBERG RASSY 352



HALLBERG RASSY 352



HALLBERG RASSY 352



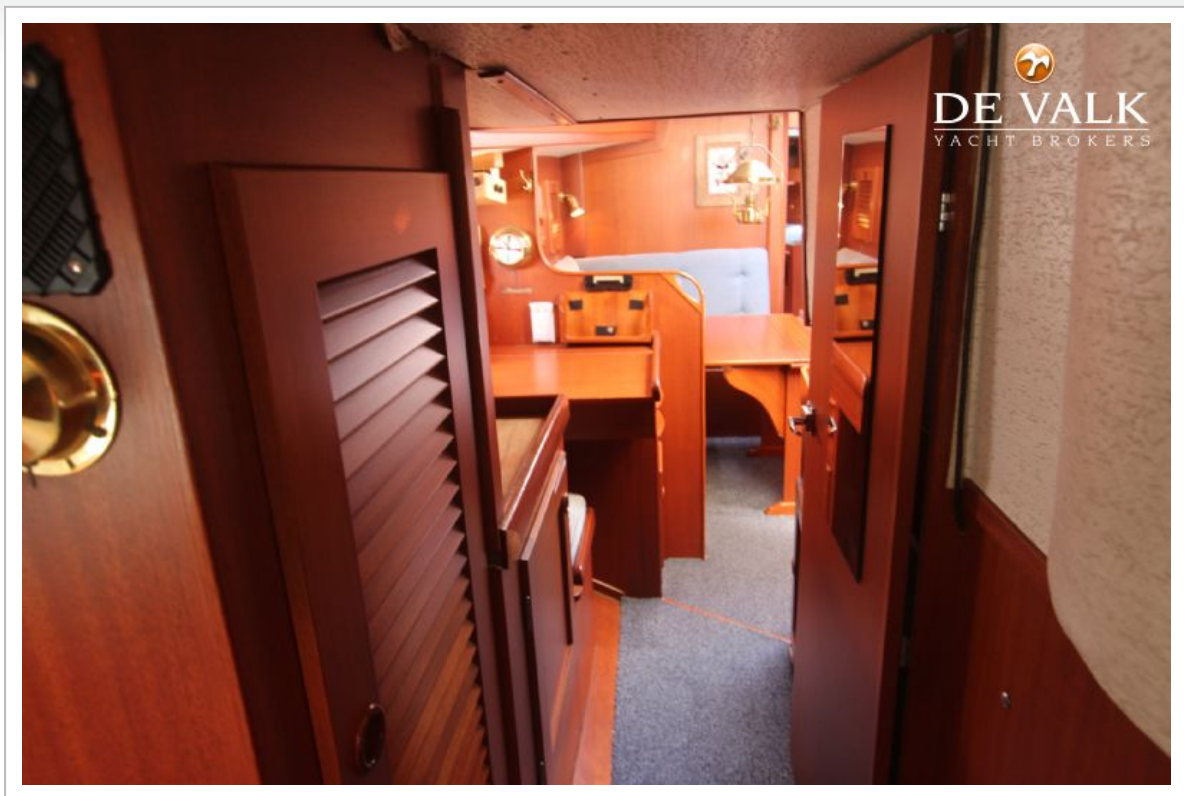
HALLBERG RASSY 352



HALLBERG RASSY 352



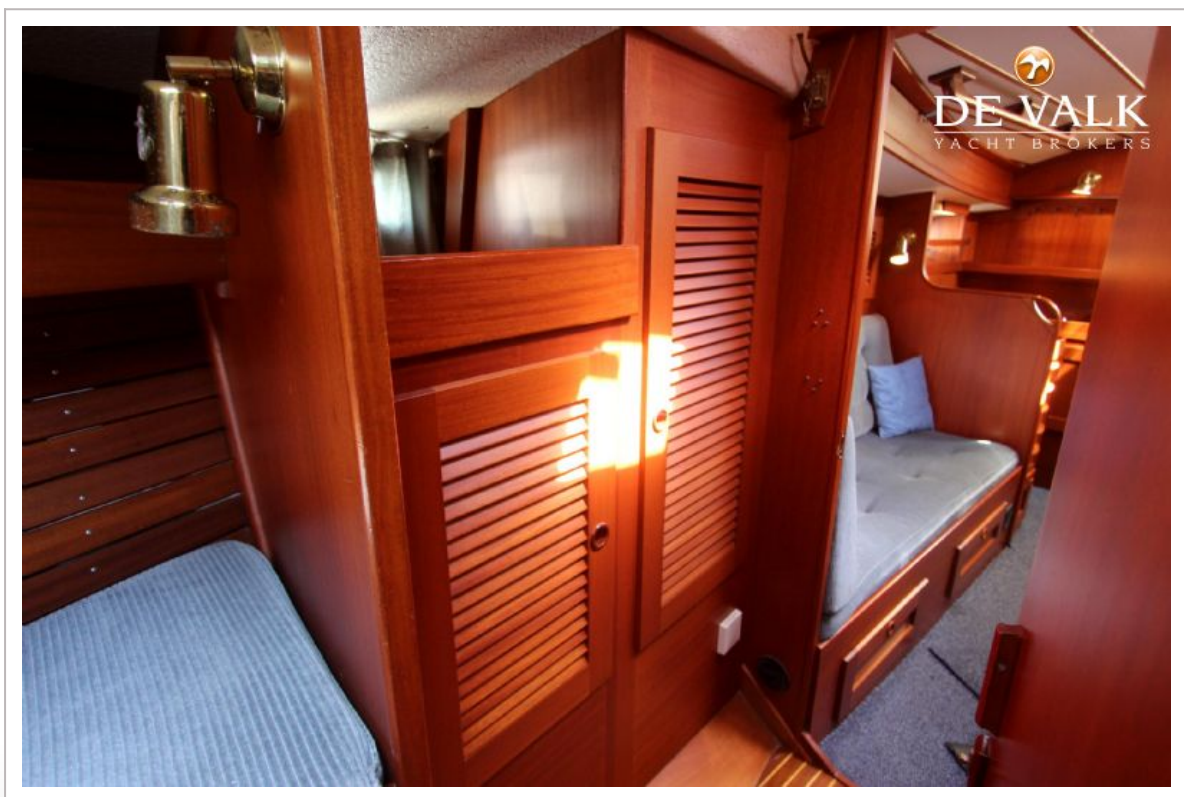
HALLBERG RASSY 352



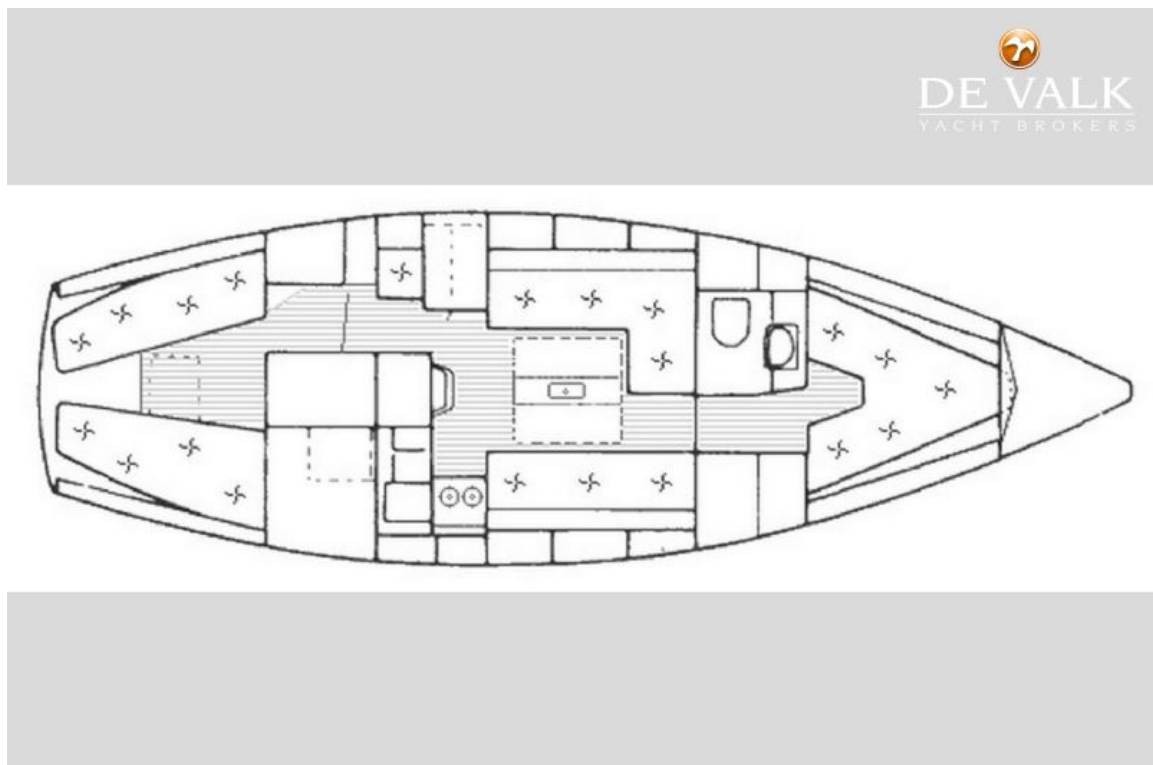
HALLBERG RASSY 352

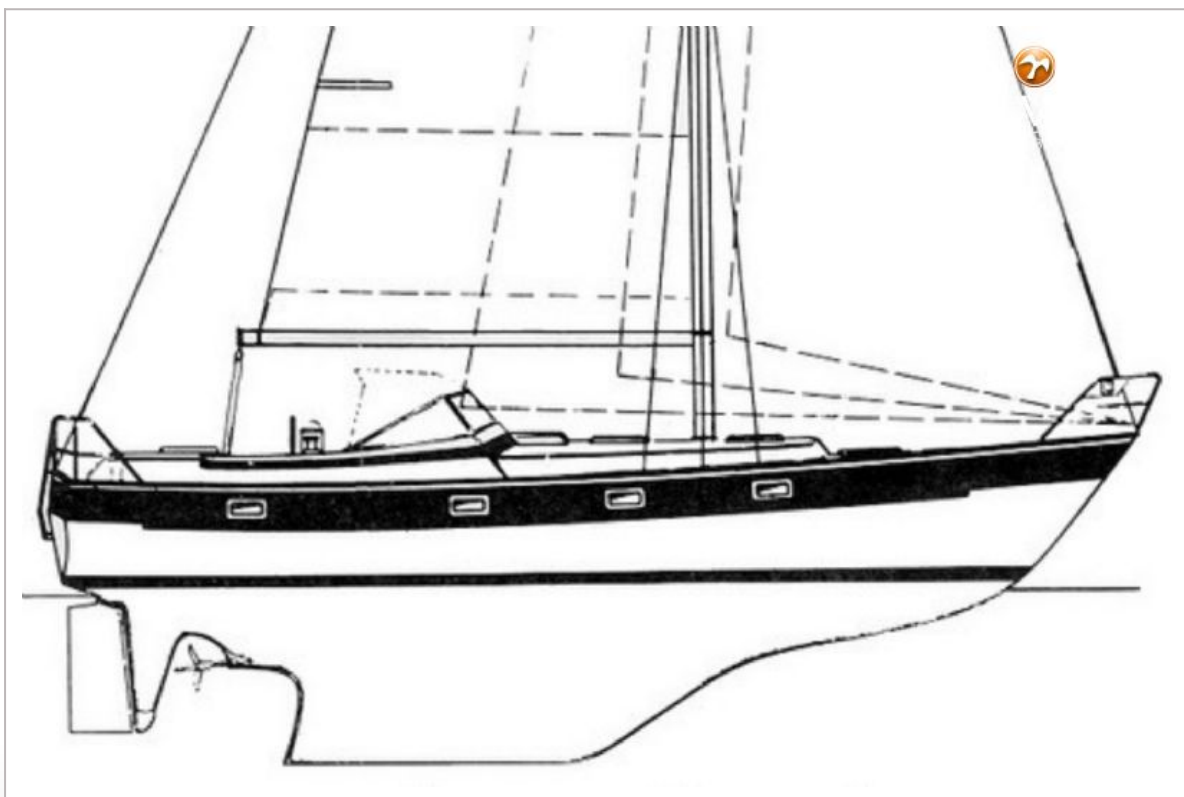
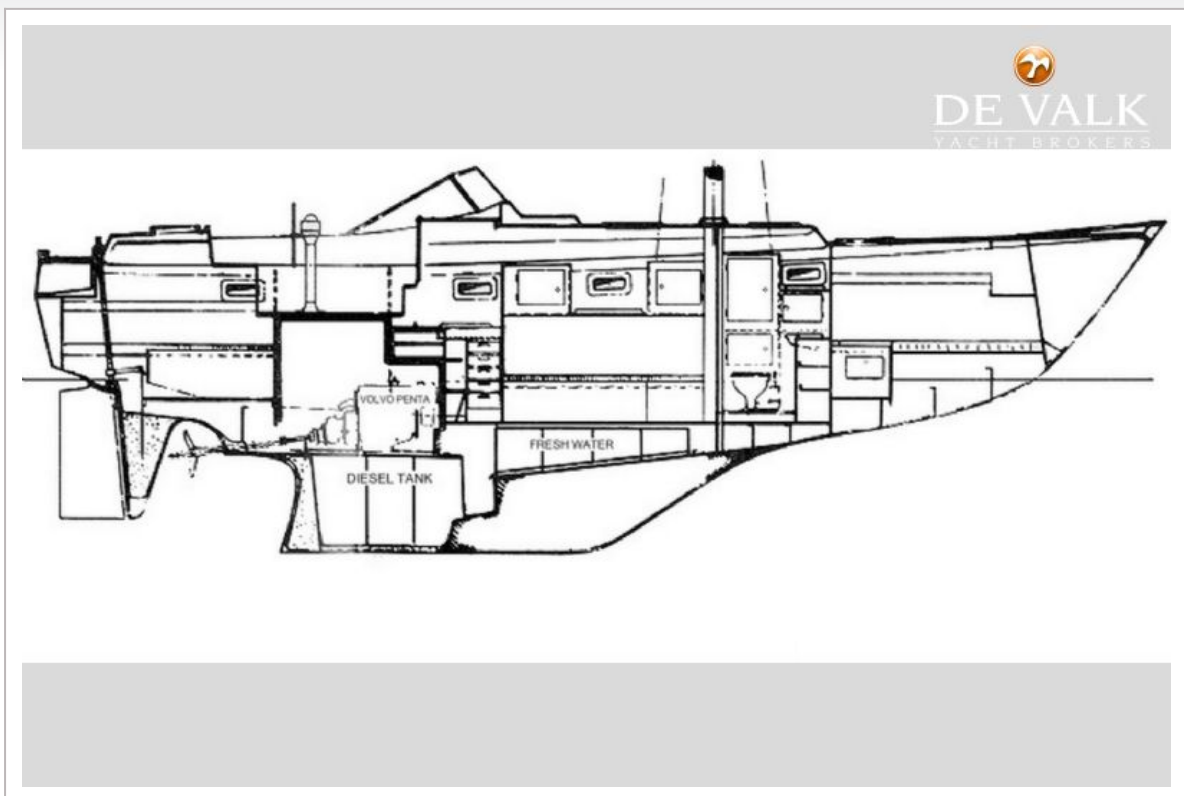


HALLBERG RASSY 352



HALLBERG RASSY 352





HALLBERG RASSY 352



