



BARKAS 1450 OK



BARKAS 1450 OK

BROKER'S COMMENTS

The Barkas 1450 OK is a modified Barkas 1350 with an extended hull, making the cockpit extra large. This Barkas 1450 OK also has a deeper continuous keel, making the boat very stable and easy to navigate and maneuver by one person. Inside you will find a spacious salon with separate dinette with the galley and helm position in the same deck salon. Below deck there are five berths in two cabins and a separate shower and toilet compartment. This Barkas 1450 OK is very extensively insulated, making your stay on board comfortable all year round.

Nick Lanting

SPECIFICATIONS

Dimensions	14.50 x 4.20 x 1.50 (m)	Builder	
Built	2004	Cabins	2
Material	Steel	Berths	5
Engine(s)	1 x Perkins Sabre 210Ti diesel	Hp/Kw	210.00 (hp), 154.56 (kw)
Asking price	sold (VAT)	Lying	at sales office

CONTACT

Sales office	De Valk Sint Annaland B.V.	Telephone	+31 (0)166 601 000
Address	Koelhuisweg 4 4697 RM Sint Annaland NL	E-mail	sintannaland@devalk.nl

DISCLAIMER

These particulars are given in good faith as supplied but cannot be guaranteed.



BARKAS 1450 OK

GENERAL

Model	BARKAS 1450 OK
Type	motor yacht
LOA (m)	14,50
Beam (m)	4,20
Draft (m)	1,50
Air draft (m)	5,00
Year built	2004
Country	Belgium
Designer	Huitema
Displacement (t)	20
Ballast (tonnes)	cast iron and lead 2
CE norm	NA
Hull material	steel
Hull colour	blue
Hull thickness (mm)	6
Hull shape	multi hard chine
Keel type	long keel
Superstructure material	steel
Superstructure (mm)	4
Deck plate thickness (mm)	5
Rubbing strake	plastic
Deck material	steel
Deck finish	non-skid paint
Superstructure deck finish	paint
Cockpit deck finish	Soft GRP
Antifouling (year)	2024/07
Window frame	stainless steel
Window material	double glazing Tempered glass on outside
Deckhatch	yes
Portholes	aluminium 10 x



BARKAS 1450 OK

Insulation	foam Styrodur in hull, sides, superstructure, ceiling
Radar arch	non collapsible
Fuel tank (litre)	stainless steel 1500, fully insulated
Level indicator (fuel tank)	On the tank itself
Freshwater tank (litre)	stainless steel 700, fully insulated
Blackwater tank (litre)	stainless steel 400
Level indicator (blackwater)	yes
Blackwater tank extraction	pump
Greywater tank (litre)	stainless steel 400
Wheel steering	hydraulic
Inside helm position	yes
More info on hull	The keel was modified, it is now a long deep keel
More info on paintwork	Baril, zink epoxy+epoxy primer+lacquer, 13 layers total

ACCOMMODATION

Cabins	2
Berths	5
Interior	Afselia
Floor	wood Oak
Open cockpit	yes
Deck saloon	yes
Saloon	yes
Heating	diesel ducted hot air Webasto 5kW
Air-conditioning	single cycle airco
Dinette	yes
Opening door to cockpit	yes
Galley	yes
Countertop	plastic
Sink	stainless steel 1 x
Cooker	calor gas Smev 3 burner
Oven	Electric



BARKAS 1450 OK

Gas alarm	yes
Microwave	yes
Fridge	Frontloader fridge in guest cabin
Freezer	Toploader in countertop
Hot water system	by engine
Water pressure system	electrical
Coffee maker	Espresso machine
Crockery	yes
Owners cabin	double bed Midships
Bed length (m)	2.00 x 1,70
Wardrobe	hanging and shelves
Bathroom	yes
Toilet	separate
Toilet system	electric Jabsco
Wash basin	at the toilet Also at the shower
Shower	separate
Guest cabin 1	v-bed Forward
Bed length (m)	2,00
Wardrobe	shelves
Guest cabin 2	single bed In owner's cabin

MACHINERY

No of engines	1
Make	Perkins Sabre
Type	210Ti
HP	210
kW	154.56
Fuel	diesel
Year installed	2003
Maximum speed (kn)	9
Cruising speed (kn)	7,5



Consumption (l/hr)	8
Engine hours	830
Engine cooling system	freshwater heat exchanger
Drive	shaft
Shaft seal	yes
Engine controls	bowden cable
Gearbox	hydraulic
Bowthruster	electric 160 kgf
Sternthruster	electric 160 kgf
Propeller type	fixed
Propeller blades	4
Propeller shaft material	stainless steel
Shaft lubrication	water
Manual bilge pump	yes
Bilge alarm	Also alarm for exhaust temperature
Electrical installation	24 V, 230 V
Batteries	yes
Start battery	2 x 105 Ah 12 V
Service battery	6 x 230 Ah 12 V
Battery monitor	yes
Battery charger/inverter	Victron 2500 W, 24 V, 70 A
Shorepower	with cable
Insulation transformer	yes
Extra info	The engine is fully boxed with cold air intake
Extra info	Engineroom has workbench

NAVIGATION

Electric compass	In autopilot
Depth sounder	Via fish finder
Log	yes
Fish finder	Lowrance



VHF	Icom
Autopilot	Autohelm
Radar	Simrad
Plotter/GPS	Lowrance
Electronic chart(s)	NL + B
Navigation lights	yes
Searchlight	4 x

EQUIPMENT

Cockpit cover	yes
Sun awning	Fixed multiplex
Window cover	yes
Cockpit table	yes
Cockpit chairs	yes
Boarding ladder	stainless steel
Anchor	Danforth
Anchor chain	2 meter, rest is line 150 m
Windlass	electrical 2 kW
Capstan	yes
Deck wash	yes
Dinghy	inflatable Achilles
Sea railing	stainless steel
Grab rail (superstructure)	stainless steel
Railing side opening gates	yes
Pulpit	yes
Lifejackets	yes
Lifebuoy	yes
Wiper	3 x
Horn	electric
Fenders	yes
Mooring lines	yes



Spare parts	yes
Tools	yes
TV	yes
TV receiver	DVB-T (not present)
Radio-cd player	yes
Cockpit speakers	yes
Speakers in salon	yes
Clock - barometer	yes
Fire extinguisher	2024
Latest extinguisher survey	2024
Extinguisher in engine room	yes



BARKAS 1450 OK



BARKAS 1450 OK



BARKAS 1450 OK



BARKAS 1450 OK



BARKAS 1450 OK



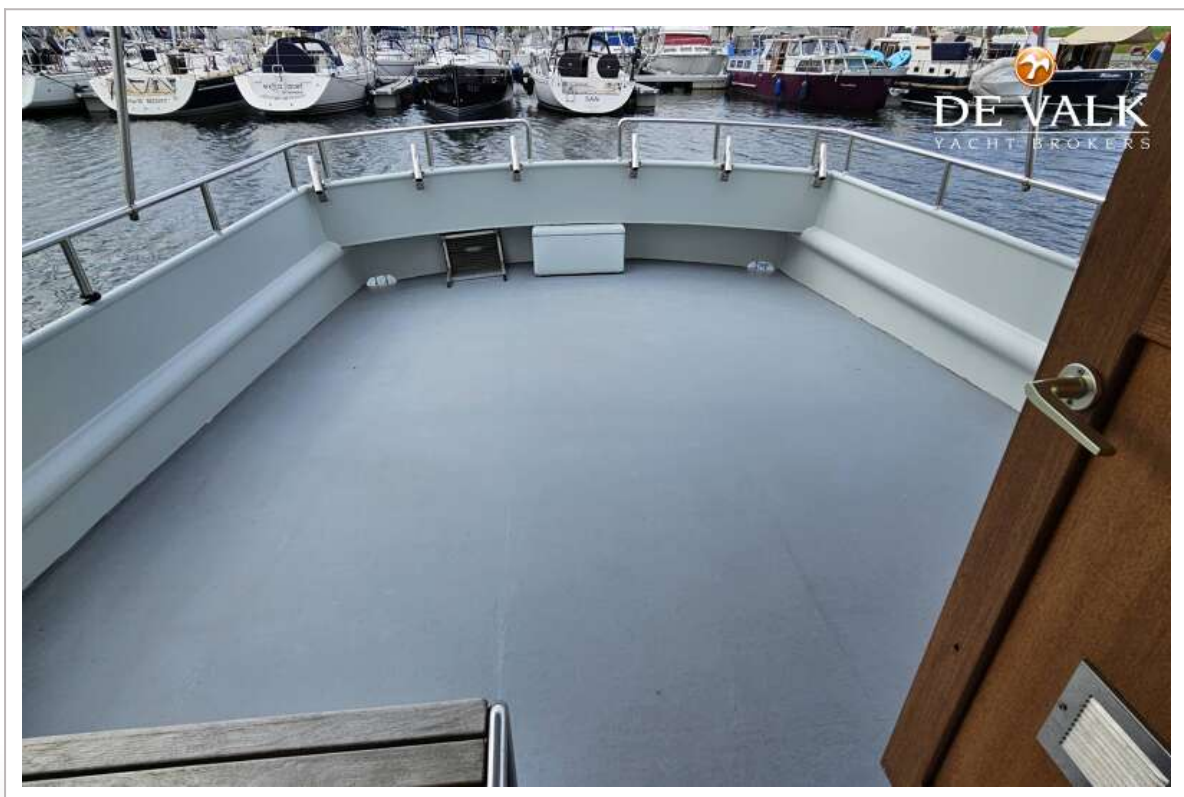
BARKAS 1450 OK



BARKAS 1450 OK



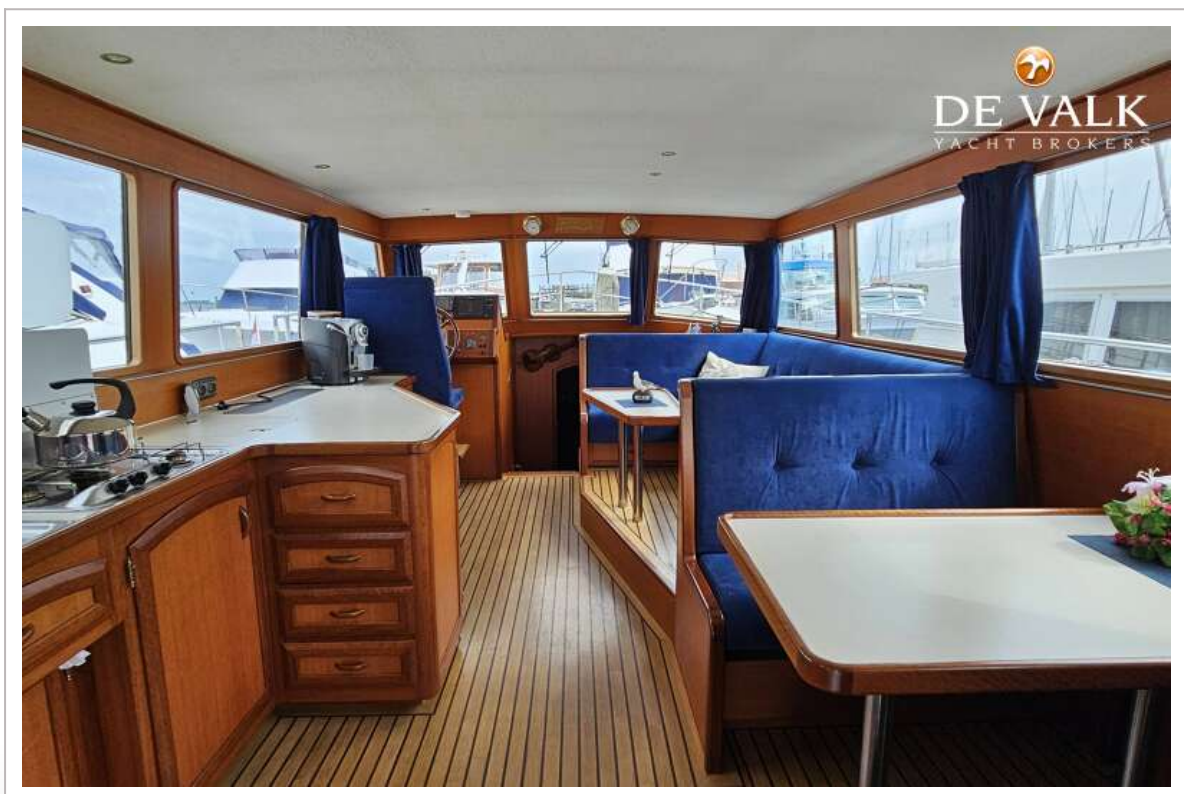
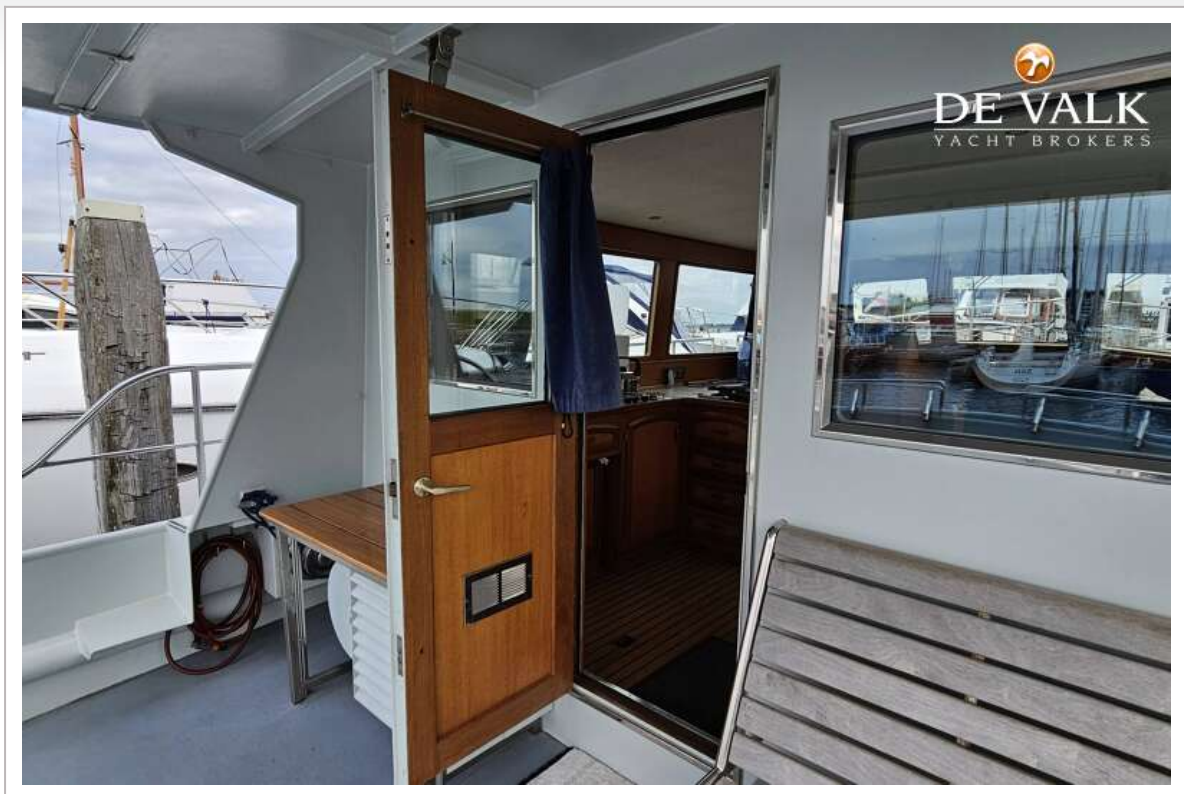
BARKAS 1450 OK



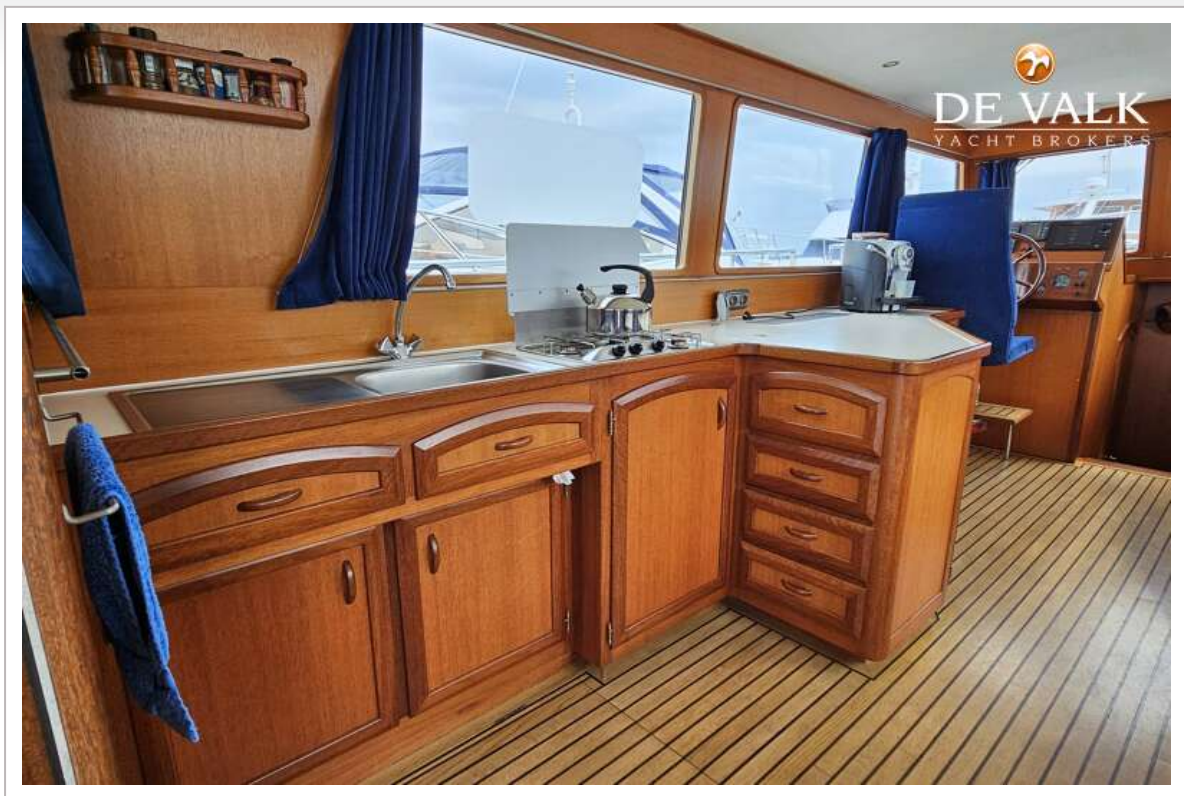
BARKAS 1450 OK



BARKAS 1450 OK



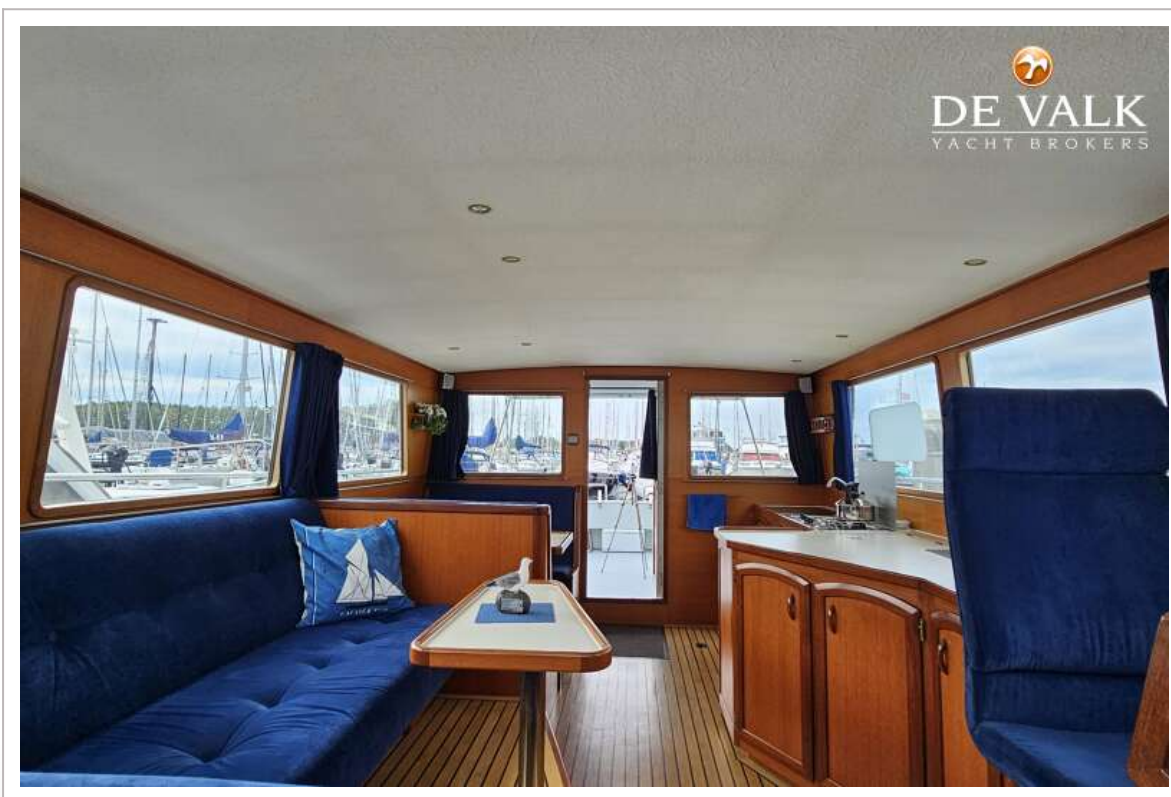
BARKAS 1450 OK



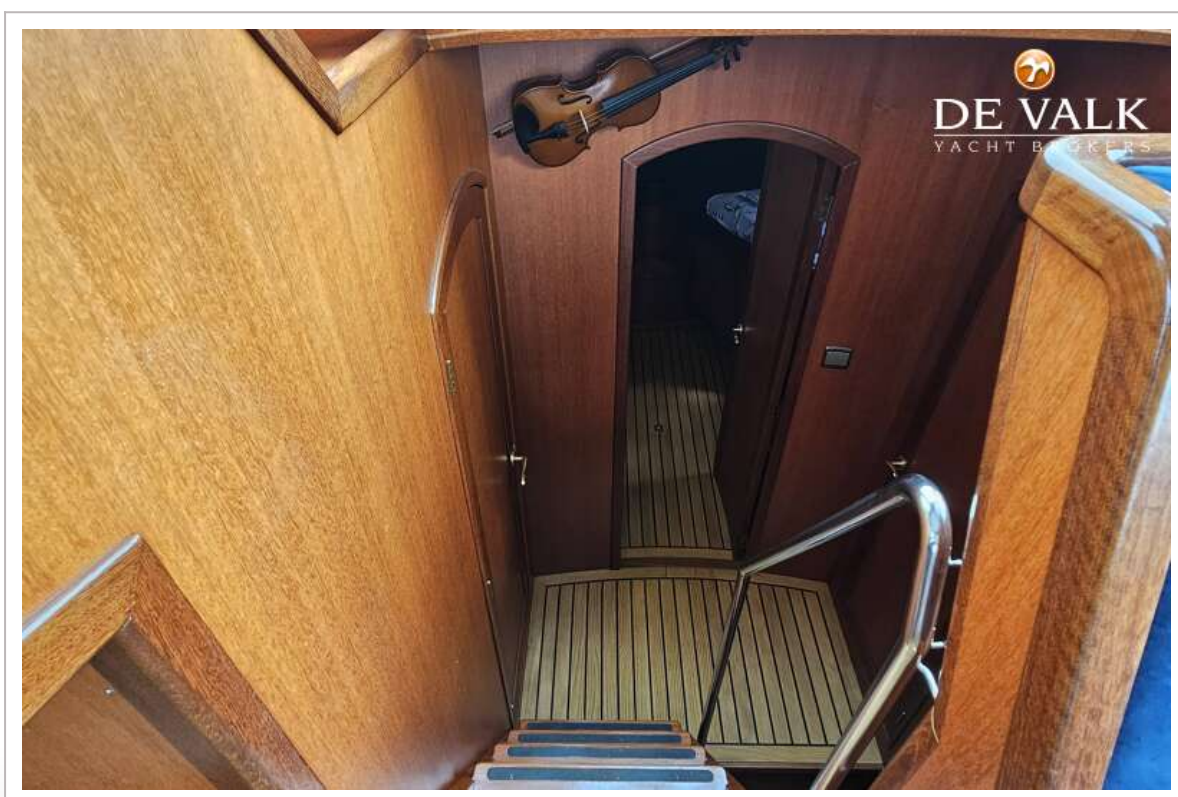
BARKAS 1450 OK



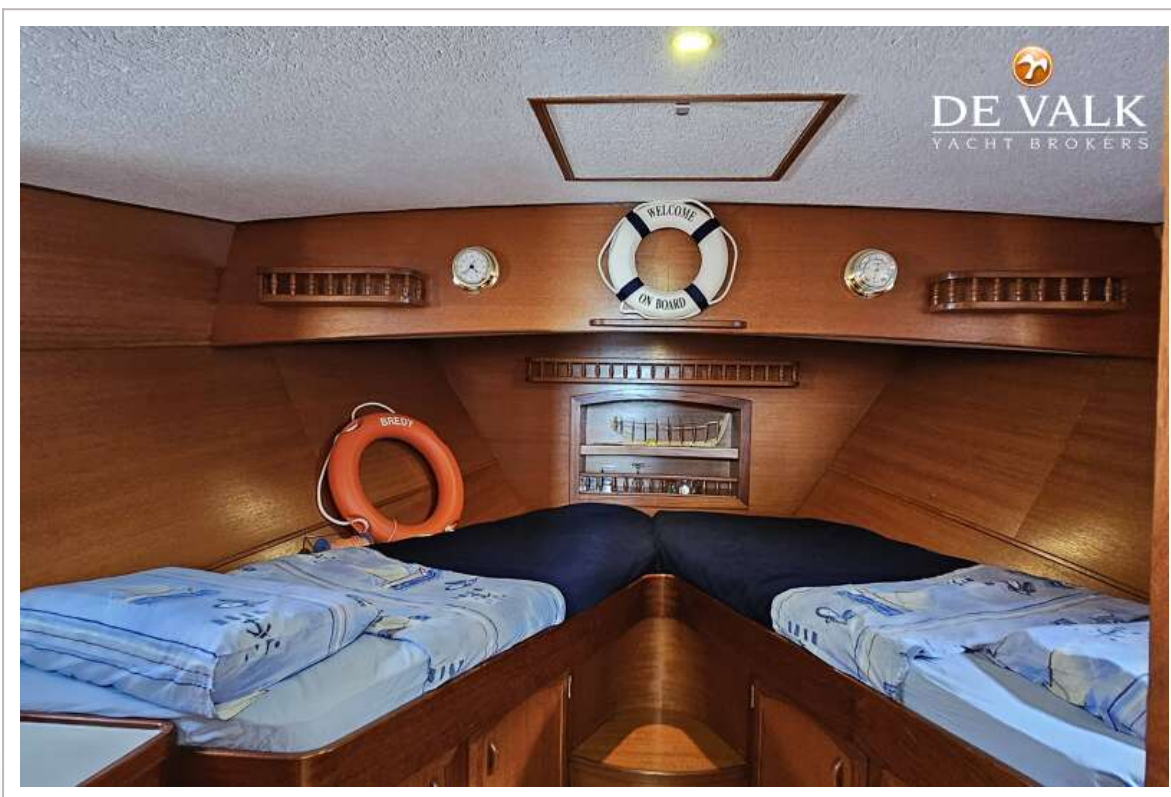
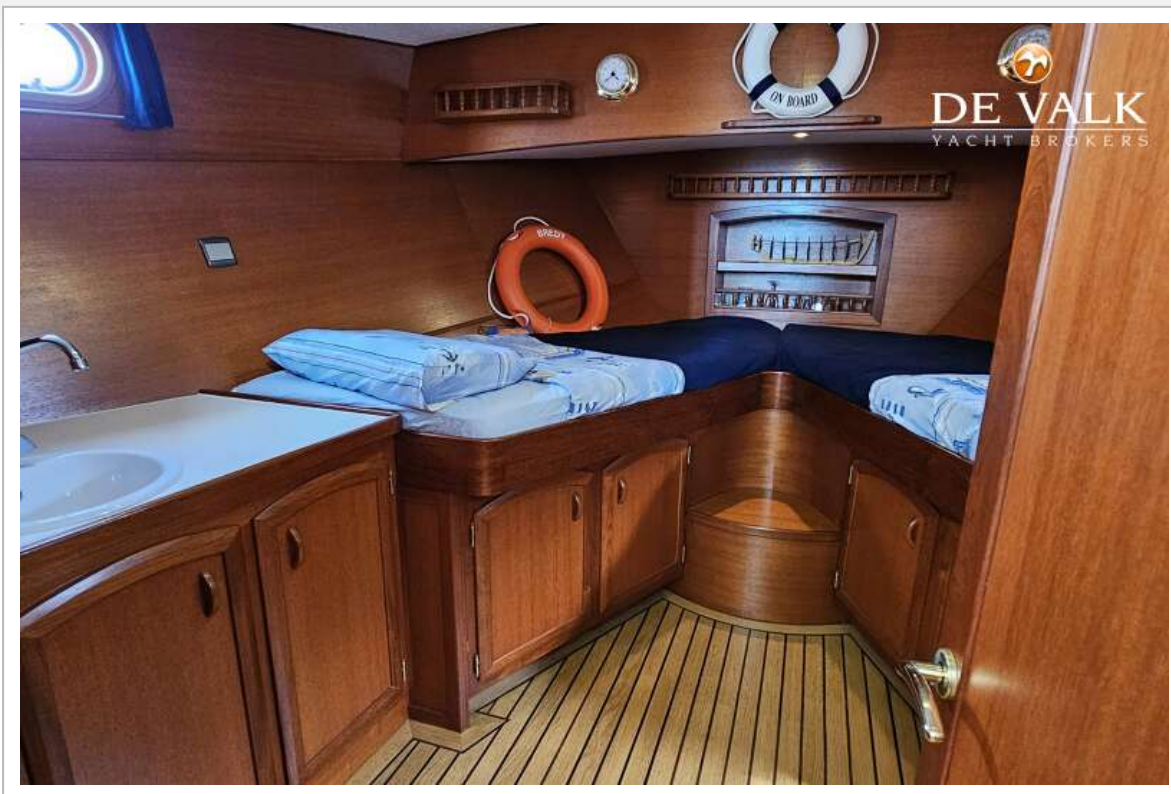
BARKAS 1450 OK



BARKAS 1450 OK



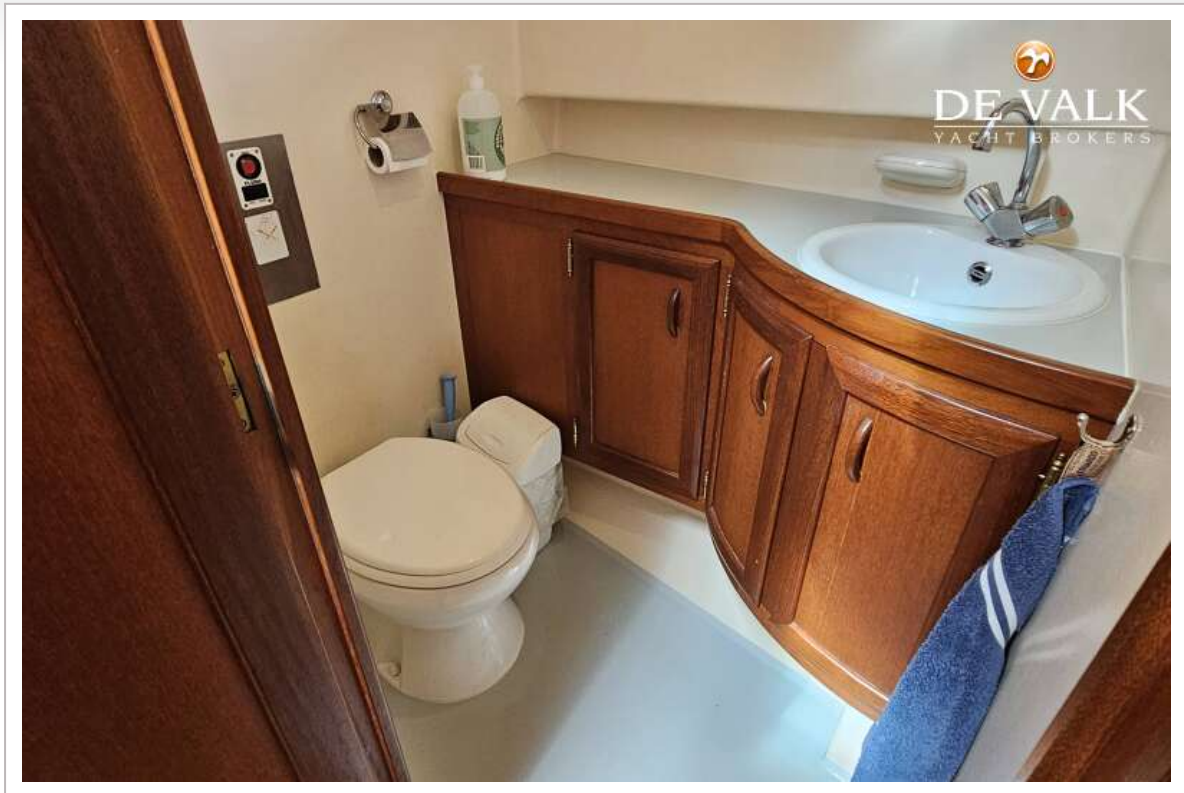
BARKAS 1450 OK



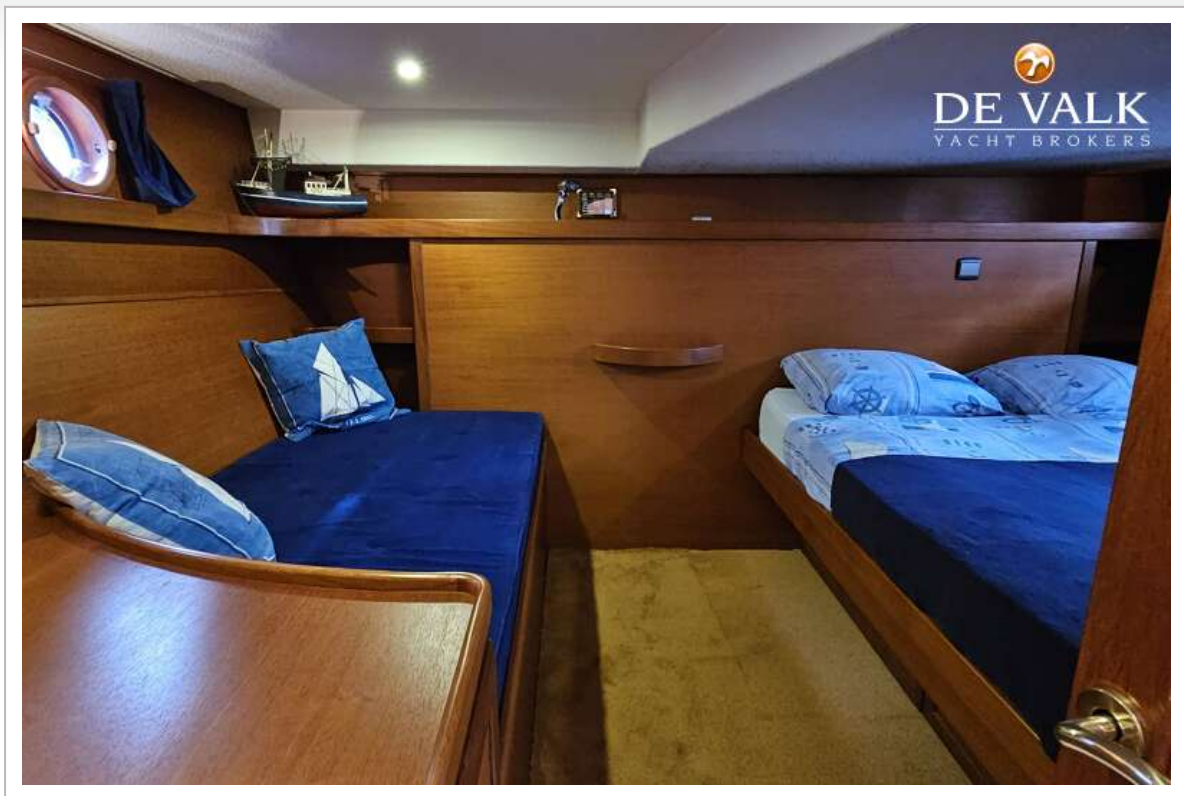
BARKAS 1450 OK



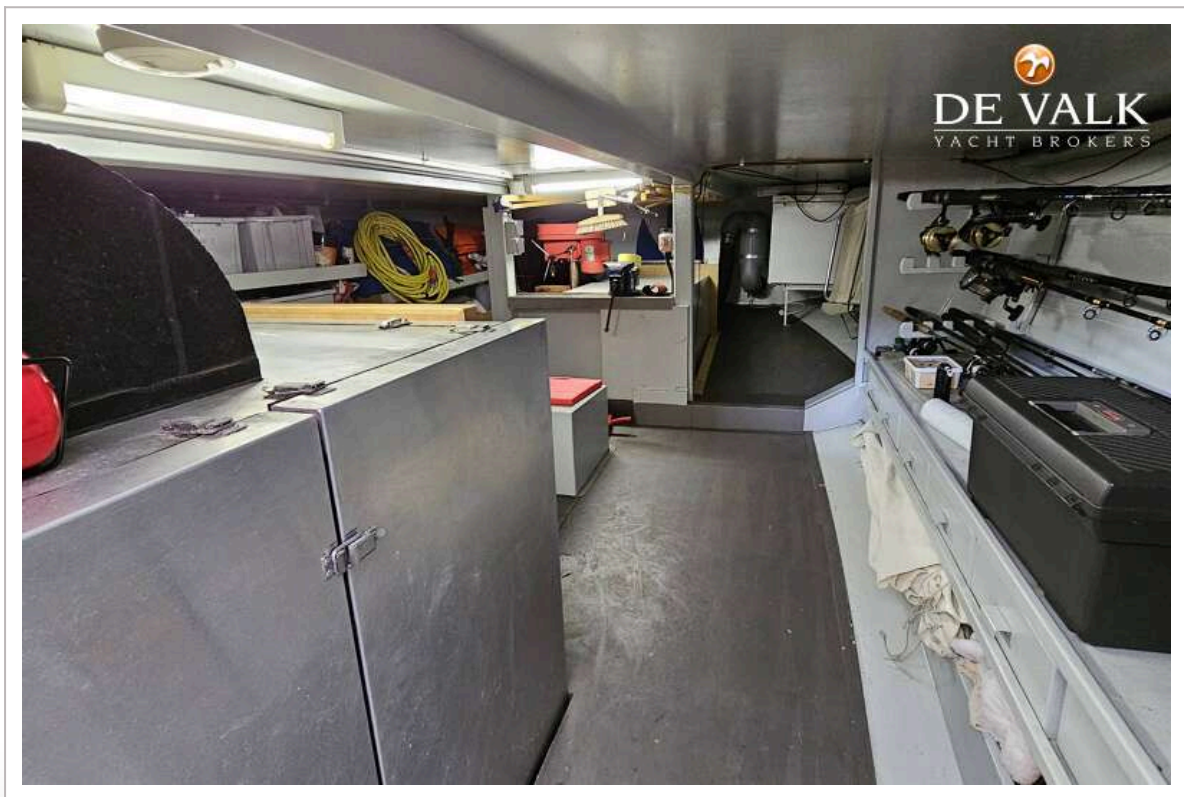
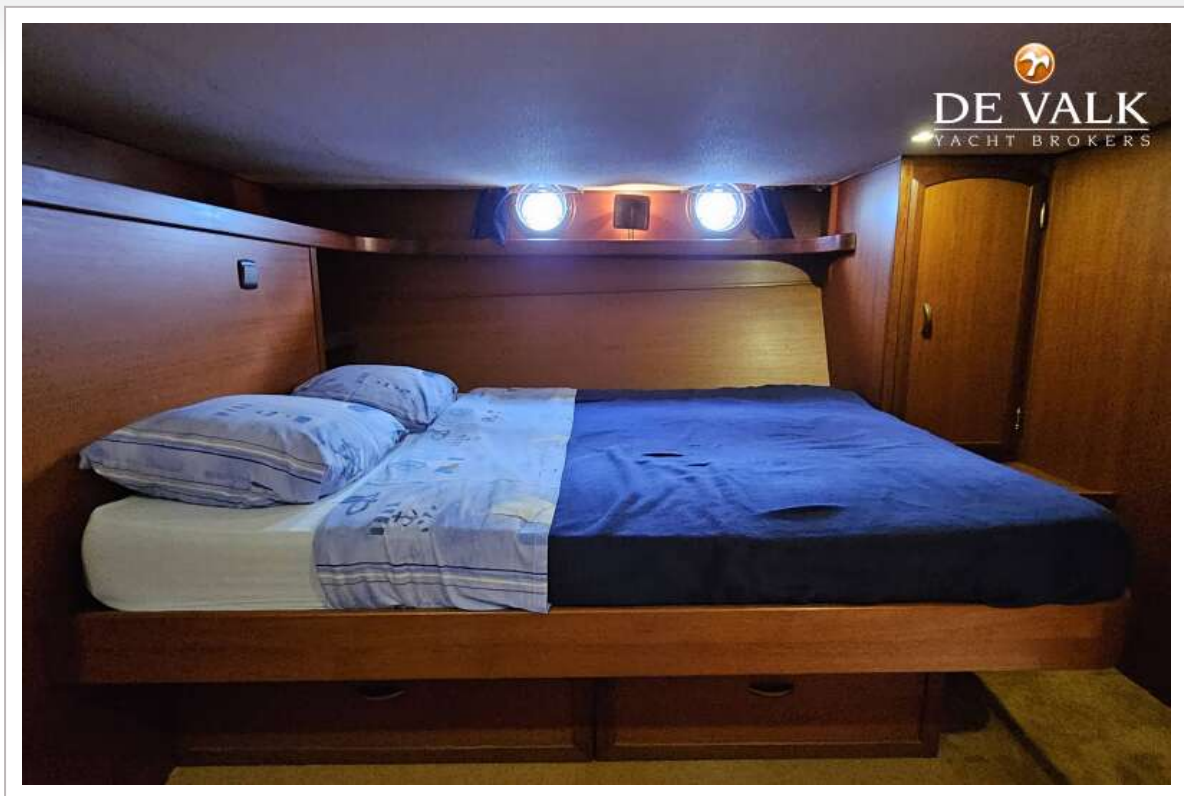
BARKAS 1450 OK



BARKAS 1450 OK



BARKAS 1450 OK



BARKAS 1450 OK



BARKAS 1450 OK



