



DE VALK
YACHT BROKERS



GRAND BANKS 52 HERITAGE EU



DE VALK
YACHT BROKERS

BROKER'S COMMENTS

The 52 Heritage EU is one of the larger Europe style long-distance cruisers from the famous Grand Banks yard. Uncompromising comfort, style and safety for owner and guests. Excellent living and storage space throughout and fully equipped for longer stays onboard. Aircon, central heating, stabilizers, etc. Twin Caterpillar diesels for reliable passage making at cruising speed up to 18 knots and can cruise economically at 8 knots.

Ger Bayens

SPECIFICATIONS

Dimensions	16.48 x 4.70 x 1.47 (m)	Builder	American Marine Inc.
Built	2005	Cabins	3
Material	GRP	Berths	4
Engine(s)	2 x Caterpillar 3126B Diesel	Hp/Kw	2 x 450.00 (hp), 330.75 (kw)
Asking price	sold (VAT)	Lying	at sales office

CONTACT

Sales office	De Valk Sint Annaland B.V.	Telephone	+31 (0)166 601 000
Address	Koelhuisweg 4 4697 RM Sint Annaland NL	E-mail	sintannaland@devalk.nl

DISCLAIMER

These particulars are given in good faith as supplied but cannot be guaranteed.



GENERAL

Model	GRAND BANKS 52 HERITAGE EU
Type	motor yacht
LOA (m)	16,48
LWL (m)	15,77
Beam (m)	4,70
Draft (m)	1,47
Air draft (m)	4,85
Headroom (m)	2,00
Year built	2005
Builder	American Marine Inc.
Country	Singapore
Designer	Ray Hunt
Displacement (t)	28
CE norm	A
Hull material	GRP
Hull colour	off-white
Hull shape	deep-V
Superstructure material	GRP
Rubbing strake	yes
Deck material	GRP
Deck finish	teak
Cockpit deck finish	teak
Window material	double glazing
Deckhatch	yes
Portholes	stainless steel
Flybridge	yes
Flybridge cover	yes
Flybridge cockpit cover	wintercover all over the flybridge
Mast can be lowered	manual
Fuel tank (litre)	steel 4500 in 2 tanks



Freshwater tank (litre)	steel 1900
Level indicator (freshwater)	yes
Blackwater tank (litre)	stainless steel 200
Level indicator (blackwater)	Sealand Tankwatch
Wheel steering	hydraulic Seastar
Inside helm position	yes
Flybridge helm position	hydraulic Seastar
Extra info	Computank tanklevel indicator Pilotseat on flybridge Lenght overall max. 18,19 mtr

ACCOMMODATION

Cabins	3
Berths	4
Interior	teak
Floor	teak
Aft deck	yes
Pilot house/deck saloon	yes
Headroom saloon (m)	2,00-1,98
Heating	central heating Kabola
Air-conditioning	single cycle airco Webasto
Chart table	yes
Dinette	yes
Sliding door to aft deck	yes
Galley	yes
Countertop	corian
Sink	Corian 2x
Cooker	electric Miele 4 flamer
Oven	Miele
Extractor	Miele
Microwave	Miele
Fridge	with freezer compartment 2x Coolmatic Waeco



Freezer	yes
Hot water system	220V/engine/heating
Water pressure system	electrical
Dishwasher	Miele
Coffee maker	Senseo
Owners cabin	double bed Forward/voor/vorne
Bed length (m)	2,10 x 1,60
Wardrobe	yes
Bathroom	en suite
Toilet	en suite
Toilet system	electric Sealand
Wash basin	in the bathroom
Shower	en suite
Guest cabin 1	twin single
Bed length (m)	2,02 x 0,80
Wardrobe	hanging and drawers
Bathroom	shared
Toilet	separate
Toilet system	electric Sealand
Wash basin	at the toilet
Shower	separate
Extra info	2nd guest cabin in use as office. Can be rebuilt as two bed guestcabin.
Washing machine	Marijnen
Dryer	condesor dryer Zanussi
Wet bar	yes

MACHINERY

No of engines	2
Make	Caterpillar
Type	3126B



HP	450,00
kW	330,75
Fuel	diesel
Year installed	2005
Maximum speed (kn)	18
Cruising speed (kn)	8
Engine hours	1080
Engine cooling system	freshwater heat exchanger
Drive	shaft
Engine controls	bowden cable
Gearbox	hydraulic ZF Marine ZF280-1A 2.47:1
Bowthruster	electric Sidepower SP155
Exhaust	watercooled
Thrust bearing	yes
Propeller type	fixed
Propeller blades	4
Propeller shaft material	stainless steel
Shaft lubrication	water
Manual bilge pump	yes
Electric bilge pump	yes
Bilge alarm	yes
Electrical installation	12/24/220v
Generator	silent separator Onan 9.5kW MDKAW
Start battery	2x
Service battery	3x
Generator battery	1x
Bowthruster battery	+ Protech charger 24v
Battery monitor	yes
Battery charger	2 x Protech 1250
Inverter	Victron 12v/1600watt
Shorepower	with cable
Insulation transformer	yes



Watermaker	Desolator 60 lph (560 runninghours)
Stabilizers	fin TRAC Ditgital
Trimtabs	hydraulic Bennet
Extra info	Caterpillar motor management diagnostic module

NAVIGATION

Compass	1x Ritchie
Compass on flybridge	1x Ritchie
Electric compass	2x Raymarine ST2 90
Depth sounder	2x Raymarine ST2 90
Log	2x Raymarine ST2 90
Windset	2x Raymarine ST2 90
VHF	2x Raymarine 240E
Autopilot	2x Raymarine ST2 90
Rudder angle indicator	VDO
Radar	Raymarine Pathfinder 48 NM
Radar/GPS/plotter	2x Raymarine E-120
Navtex	Clipper screen
Electronis chart(s)	Navionics
Radio receiver	Kenwood TS480 HF transceiver
Searchlight	remote controled ITT Jabsco
Extra info	Shakespear antennas

EQUIPMENT

Fixed windscreen	yes
Bimini	yes
Cockpit cushions	yes
Cockpit table	yes
Cockpit chairs	yes
Bathing platform	yes
Boarding ladder	stainless steel



Deck shower	hot+cold
Anchor	Delta
Anchor chain	70 mtrs.
Windlass	electrical Lofrans Falcon 1500 watt
Deck wash	Fresh water
Dinghy	rigid inflatable Zodiac Cadet 310 RIB
Deck crane	electric Marquipt 600lbs/273kg
Sea railing	stainless steel
Grab rail (superstructure)	yes
Railing side opening gates	yes
Pushpit	yes
Pulpit	yes
Life raft	Arimar
Last life raft survey	due
Wiper	with wash function 3x
Horn	air pressure
Fenders	yes
Mooring lines	yes
TV	2x Samsung flat screen
Satellite	KVH Trackvision sat receiver
Radio-cd player	Onkyo
DVD player	Onkyo HDMI
Surround Sound System	yes
Speakers in salon	yes
Speakers in cabin	yes
Clock - barometer	yes
Fire extinguisher	yes
Extinguisher in engine room	yes



GRAND BANKS 52 HERITAGE EU



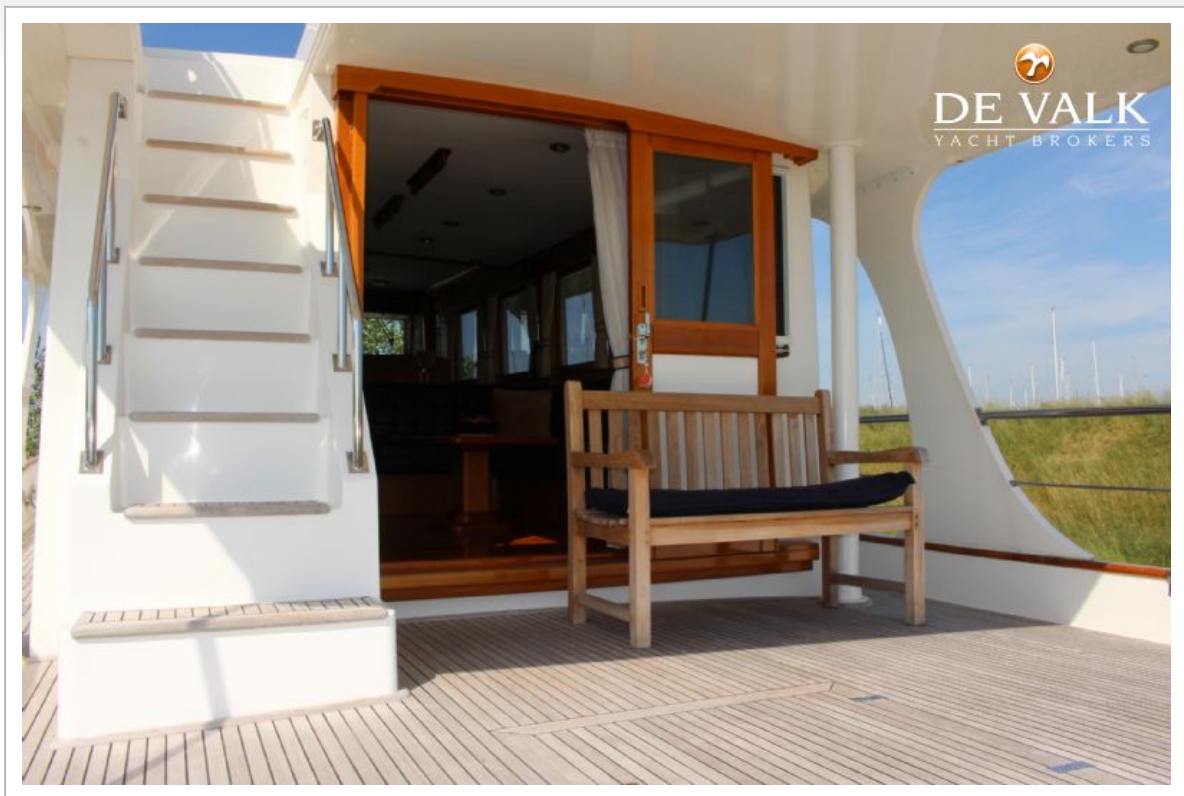
GRAND BANKS 52 HERITAGE EU



GRAND BANKS 52 HERITAGE EU

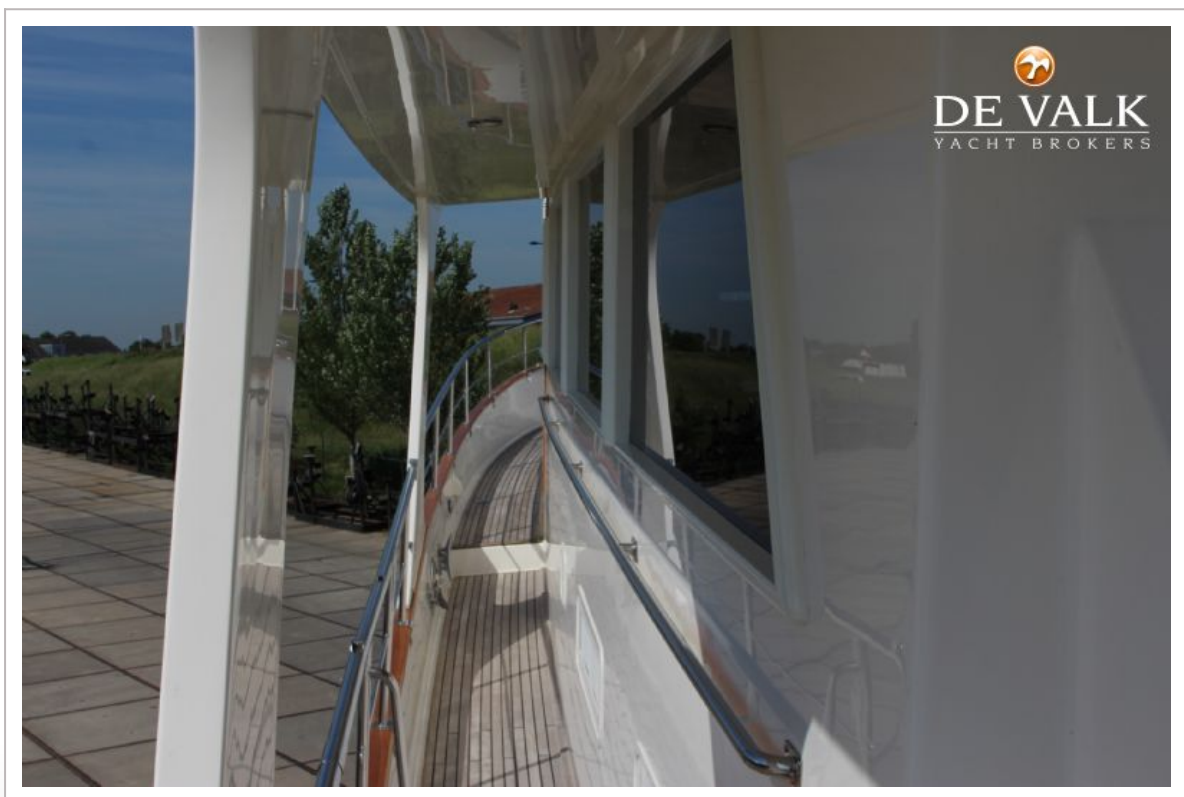


GRAND BANKS 52 HERITAGE EU



GRAND BANKS 52 HERITAGE EU



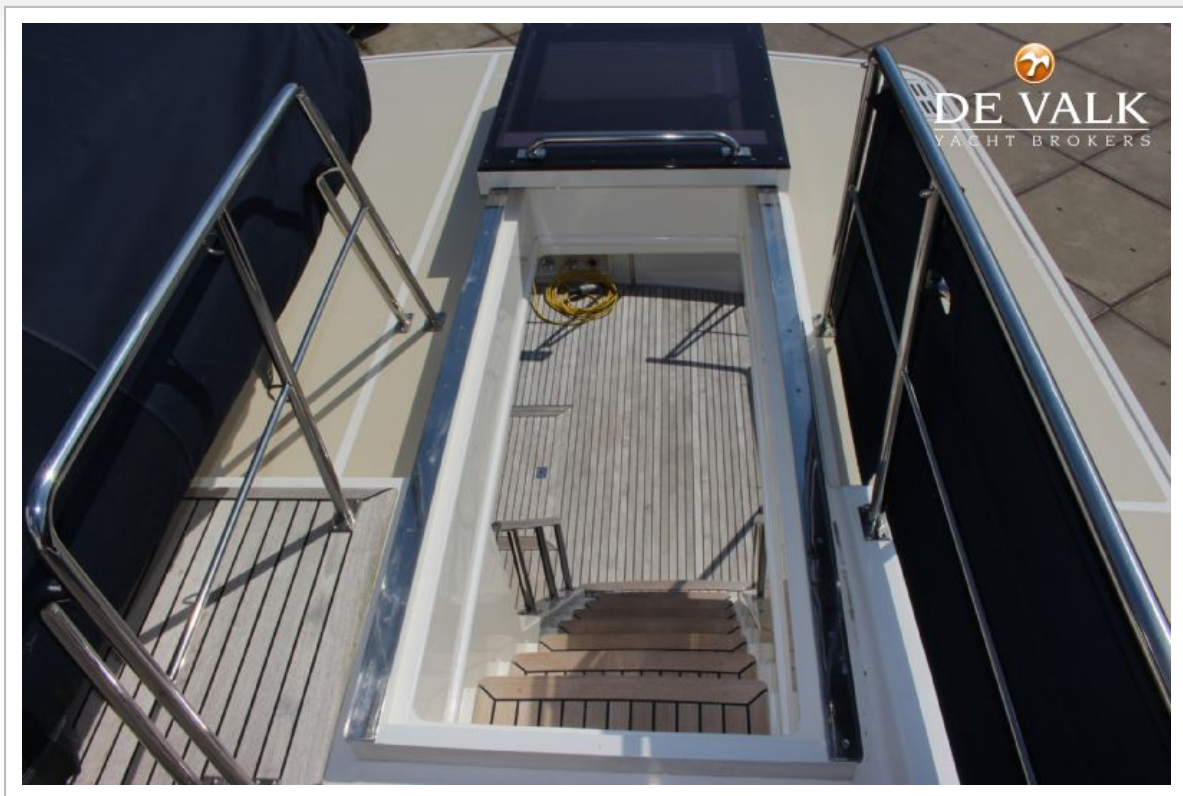


GRAND BANKS 52 HERITAGE EU



GRAND BANKS 52 HERITAGE EU

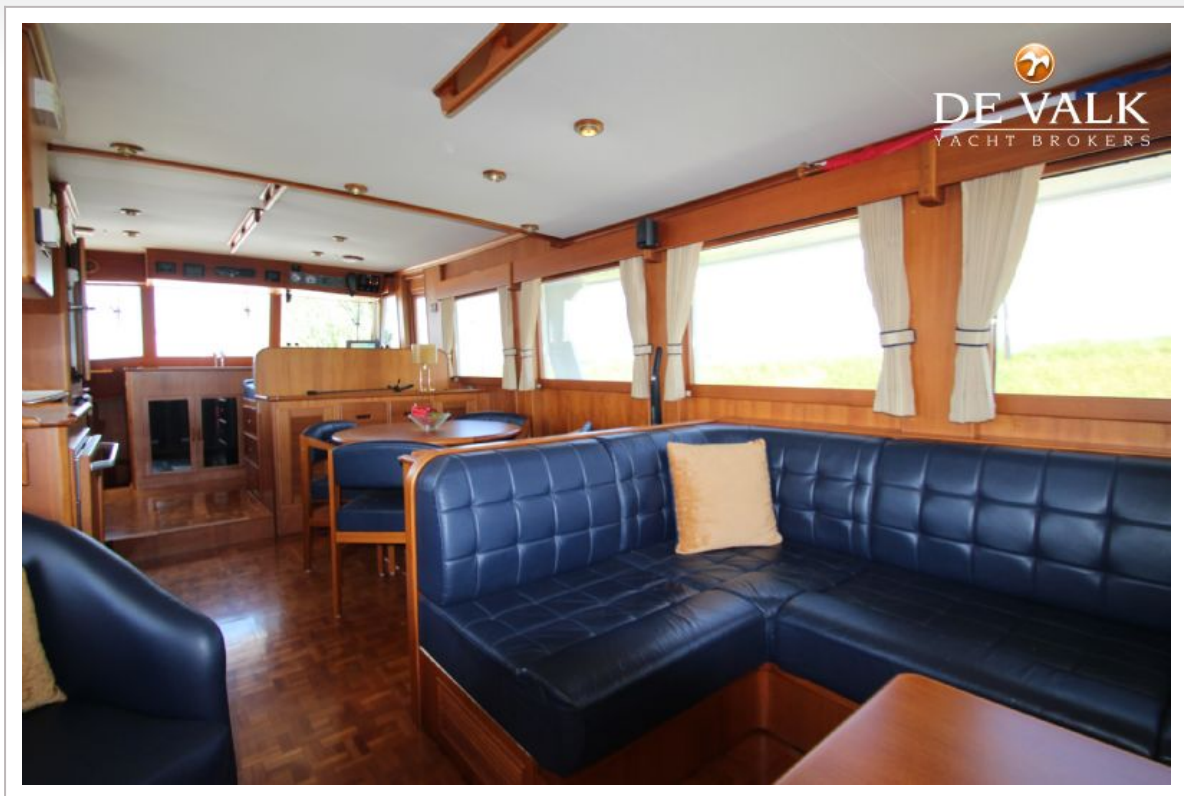




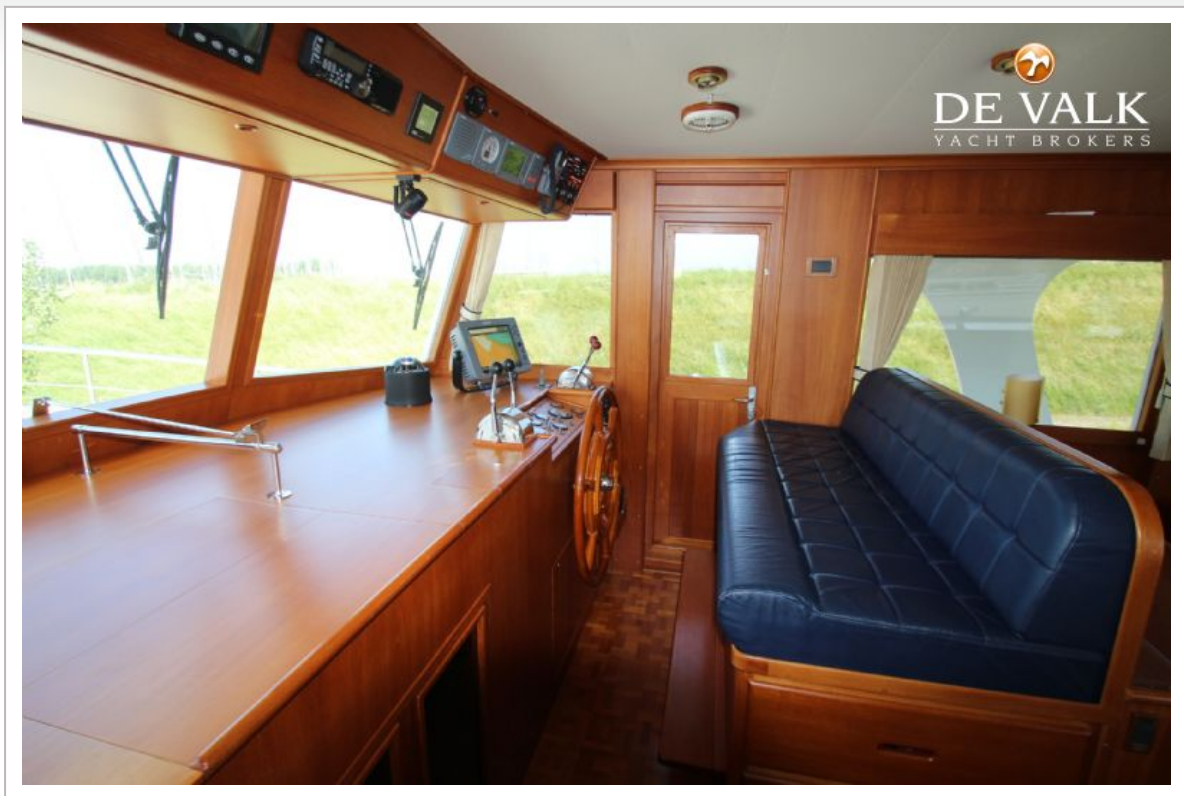


GRAND BANKS 52 HERITAGE EU





GRAND BANKS 52 HERITAGE EU





GRAND BANKS 52 HERITAGE EU



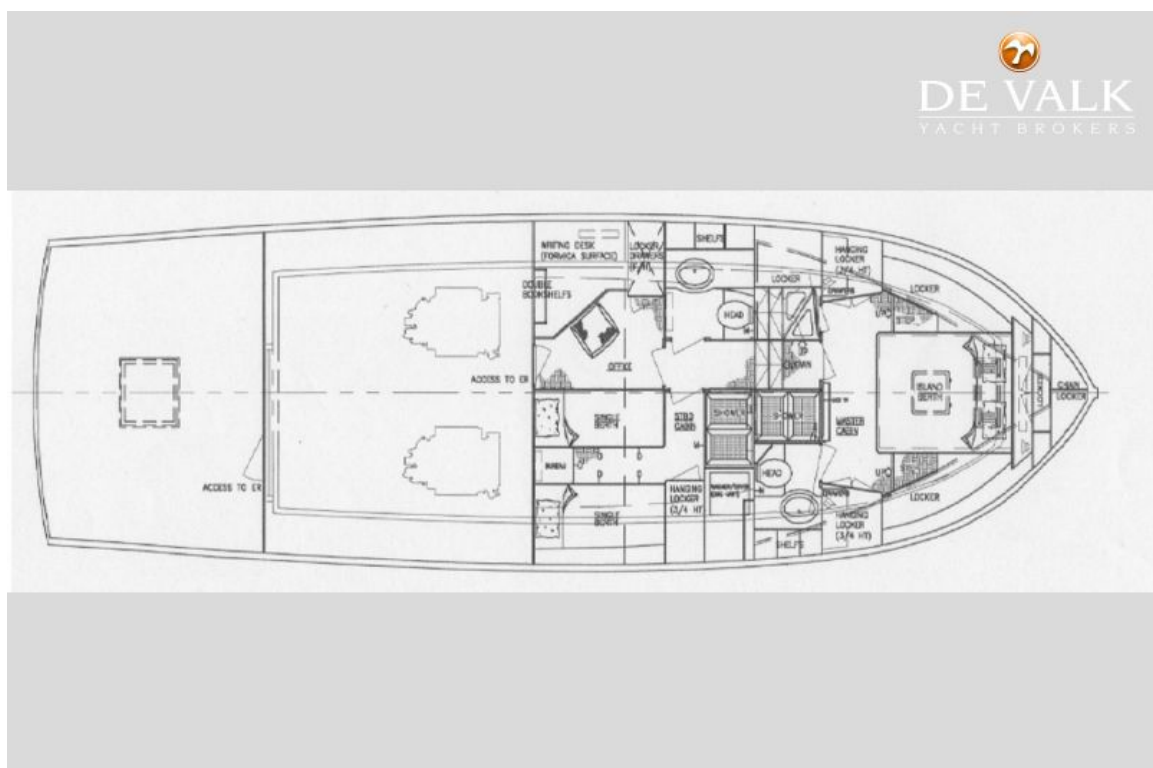
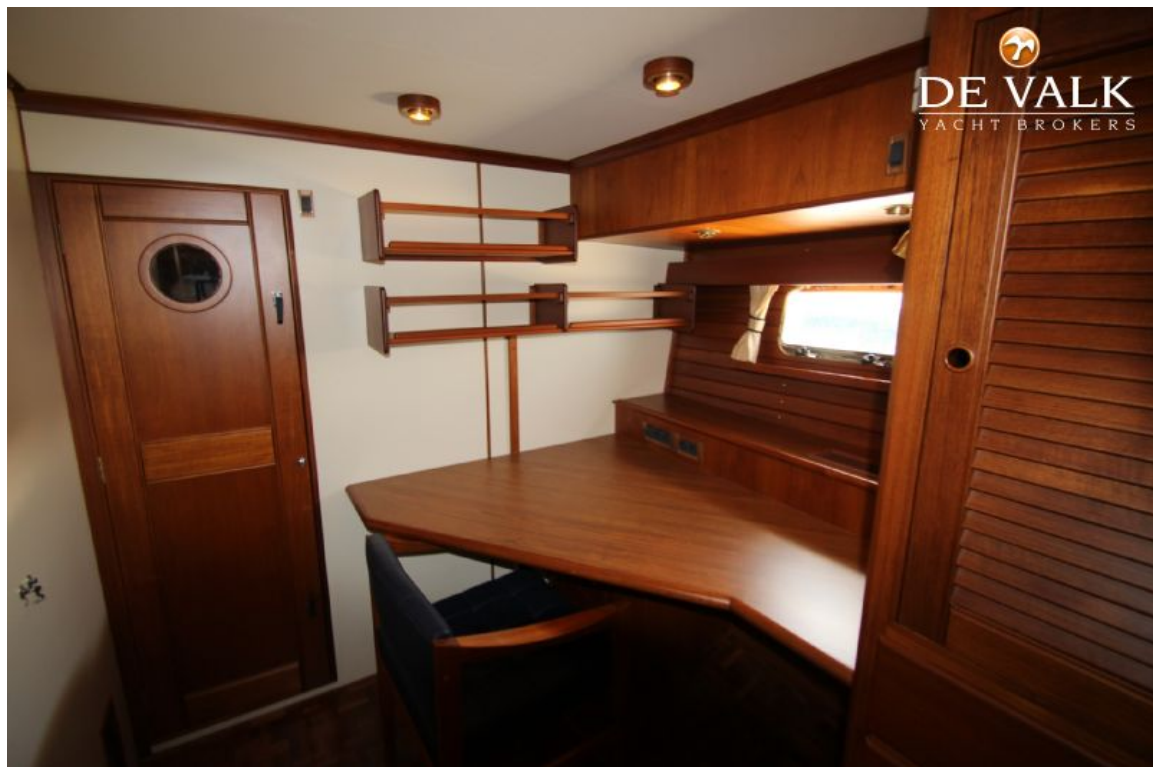
GRAND BANKS 52 HERITAGE EU







GRAND BANKS 52 HERITAGE EU



GRAND BANKS 52 HERITAGE EU

