



BAVARIA 42 CRUISER

BAVARIA 42 CRUISER

BROKER'S COMMENTS

The Cruiser series from Bavaria Yachts is a sailor's dream. The 42 Cruiser features twin wheels, and large easily accessible cockpit lockers without sacrificing space and sail ability. Below deck, large forward and aft cabins comfortably accommodate 6 people. She has only had private use.

Reinier van der Wolf

SPECIFICATIONS

Dimensions	12.99 x 3.99 x 1,90 / 1.90 (m)	Builder	Bavaria Yachtbau GmbH
Built	2006	Cabins	3
Material	GRP	Berths	6
Engine(s)	1 x Volvo Penta D2-55 Diesel	Hp/Kw	55.00 (hp), 40.42 (kw)
Asking price	sold (VAT)	Lying	at sales office

CONTACT

Sales office	De Valk Monnickendam B.V.	Telephone	+31 (0)299 65 63 50
Address	Hoogedijk 6 1145 PM Katwoude NL	E-mail	monnickendam@devalk.nl

DISCLAIMER

These particulars are given in good faith as supplied but cannot be guaranteed.



BAVARIA 42 CRUISER

GENERAL

Model	BAVARIA 42 CRUISER
Type	sailing yacht
LOA (m)	12,99
LWL (m)	11,40
Beam (m)	3,99
Draft (m)	1,90
Draft min (m)	1,90
Air draft (m)	18,65
Headroom (m)	2,10
Year built	2006
Builder	Bavaria Yachtbau GmbH
Country	Germany
Designer	J & J design
Displacement (t)	9,2
Ballast (tonnes)	Approx. 3,1
CE norm	A
Hull material	GRP
Hull colour	white
Hull shape	roundbilged
Keel type	fin keel
Superstructure material	GRP
Deck material	GRP
Deck finish	teak
Superstructure deck finish	teak
Cockpit deck finish	teak
Antifouling (year)	2013
Dorades	yes
Window frame	aluminum Lewmar
Window material	tempered glass
Portholes	aluminum 6 (can not be opened)



BAVARIA 42 CRUISER

Fuel tank (litre)	polyethylene Approx. 210
Level indicator (fuel tank)	Bavaria Yachts
Freshwater tank (litre)	polyethylene 2x approx. 150
Level indicator (freshwater)	Bavaria Yachts
Blackwater tank (litre)	2x
Blackwater tank extraction	deck extraction + pump
Wheel steering	mechanical 2x Whitlock Lewmar Mambadrive
Emergency tiller	yes
More info on hull	Keel-hull connection renewed in 2013. Antifouling renewed in 2013. Hull and superstructure polished in 2013
Extra info	Musquito screens.

ACCOMMODATION

Cabins	3
Berths	6
Interior	mahogany
Floor	teak and holly
Saloon	yes
Headroom saloon (m)	2,10
Heating	diesel ducted hot air Webasto 5000
Chart table	starboardside
Aft Cabin	starboard- portside
Dinette	starboardside
Galley	portside
Countertop	corian
Sink	stainless steel 2x
Cooker	calor gas Force 10 (3 burner + grill)
Oven	Force 10
Fridge	Waeco
Hot water system	220V + engine QL boiler
Water pressure system	electrical Jabsco



BAVARIA 42 CRUISER

Owners cabin	french bed Front (with foam mattresses and slatted frame)
Bed length (m)	2.00 x 1.50
Wardrobe	hanging/drawers/shelves
Bathroom	en suite
Toilet	en suite
Toilet system	manual Jabsco
Wash basin	in the bathroom
Shower	en suite
Guest cabin 1	double bed Portside (comfort mattress 2010)
Bed length (m)	2.00 x 1.60
Wardrobe	hanging/drawers/shelves
Bathroom	shared Portside
Toilet	shared
Toilet system	manual Jabsco
Wash basin	in the bathroom
Shower	shared
Guest cabin 2	double bed Starboard (comfort mattress 2010)
Bed length (m)	2.00 x 1.60
Wardrobe	hanging/drawers/shelves
Extra info	Lattenbodem + koudschuim. olielampen rvs (Magnussen)

MACHINERY

No of engines	1
Make	Volvo Penta
Type	D2-55
HP	55,00
kW	40,42
Fuel	diesel
Year installed	2006
Maximum speed (kn)	7
Cruising speed (kn)	6.00



BAVARIA 42 CRUISER

Consumption (l/hr)	4,3
Engine hours	1082
Engine cooling system	freshwater heat exchanger
Drive	sail-drive
Engine controls	mechanical
Gearbox	mechanical
Propeller type	folding + original propellor as spare
Propeller blades	3
Manual bilge pump	Pump 1038
Electric bilge pump	Rule 2000
Electrical installation	12/220V
Start battery	1x 75 Ah
Service battery	3x 140 Ah Bosch
Battery charger	Samlex Europe 45A
Inverter	Mobitronic 1000W (with controller)
Solar panel	with Teca PR1010 panel (at charttable) Shell 85W
Shorepower	with cable 20 m.
Extra info	Saildrive manchet + anodes renewed in 2013. Maintenance saildrive 2013. Maintenance engine 2013.

NAVIGATION

Compass	2x Plastimo
Depth sounder	Raymarine ST60
Log	Raymarine ST60
Windset	Raymarine ST60+
VHF	at charttable + cockpit Navman
VHF handheld	Icom IC-M33
Autopilot	with Raymarine Smartcontroller Raymarine Smart Pilot ST6002
Radar/plotter	Raymarine C70 on S/S consol + cover
Weather receiver	at charttable Weatherman
Navtex	at charttable MC Murdo ICS Nav 6



BAVARIA 42 CRUISER

Extra info

Withlock Lewmar Mambadrive 1/4 hp autopilot drive installation,
Raymarine GOS antenna + cable, Raymarine 2kW radar dome +
guard

EQUIPMENT

Sprayhood	beige Foldable
Sprayhood with grab rail	stainless steel with lether
Bimini	beige
Cockpit table	Teak
Boarding ladder	stainless steel
Gangway	at stern
Deck shower	yes
Anchor	22 kg
Anchor chain	110m - 8 mm, S/S DIN766
Anchor 2	Brittany 16 kg incl. 30 m. line with split.
Windlass	electrical Lewmar (can also controlled from out cockpit "Quick" display)
Deck wash	Flojet pump
Davits	Removable
Sea railing	wire
Grab rail (superstructure)	stainless steel
Railing side opening gates	midship
Pushpit	with roller for achorline
Pulpit	yes
Life raft	valise (or bag) Seago
Life raft (pers)	6
Last life raft survey	5-5-2009
Radar reflector	yes
Fenders	yes
Mooring lines	yes
Radio-cd player	Kenwood
Speakers in salon	2 x Sony 150W



BAVARIA 42 CRUISER

Clock - barometer	Barigo
Fire extinguisher	4 (2012) + 4 (2006)
Latest extinguisher survey	2012
Extra info	Gas springs outside lockers cockpit, Nasa weatherman

RIGGING

Rigging	sloop
Material mast	aluminum
Spreaders	Double set
Mainsail	Elvstrom
Stoway mast	Seldén
Jib	Elvstrom
Genoa I	Triradial Laminate
Genoa furler	Furlex 300S
Genoa cover	beige (2012)
Spinnaker	with spinackerlift system on mast
Backstay adjuster	mechanical
Boomvang	mechanical Seldén Rodkicker
Primary sheet winch	2 x Lewmar 40 ST
Genoa sheetwinches	2 x Lewmar 48 ST
Spinnaker winch	1x Lewmar 28CST
Isolated backstay	2x (radio)
Extra info	halyards and sheets renewed in 2013, maintenance winches in 2013.



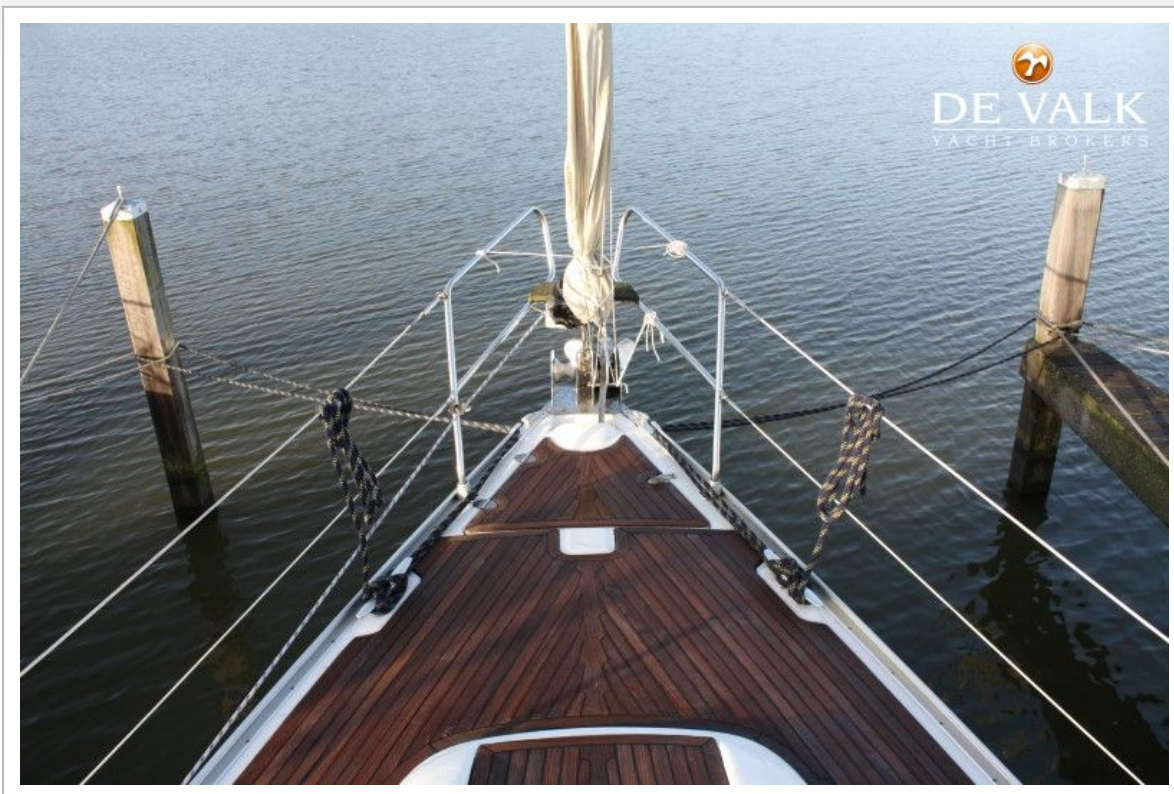
BAVARIA 42 CRUISER



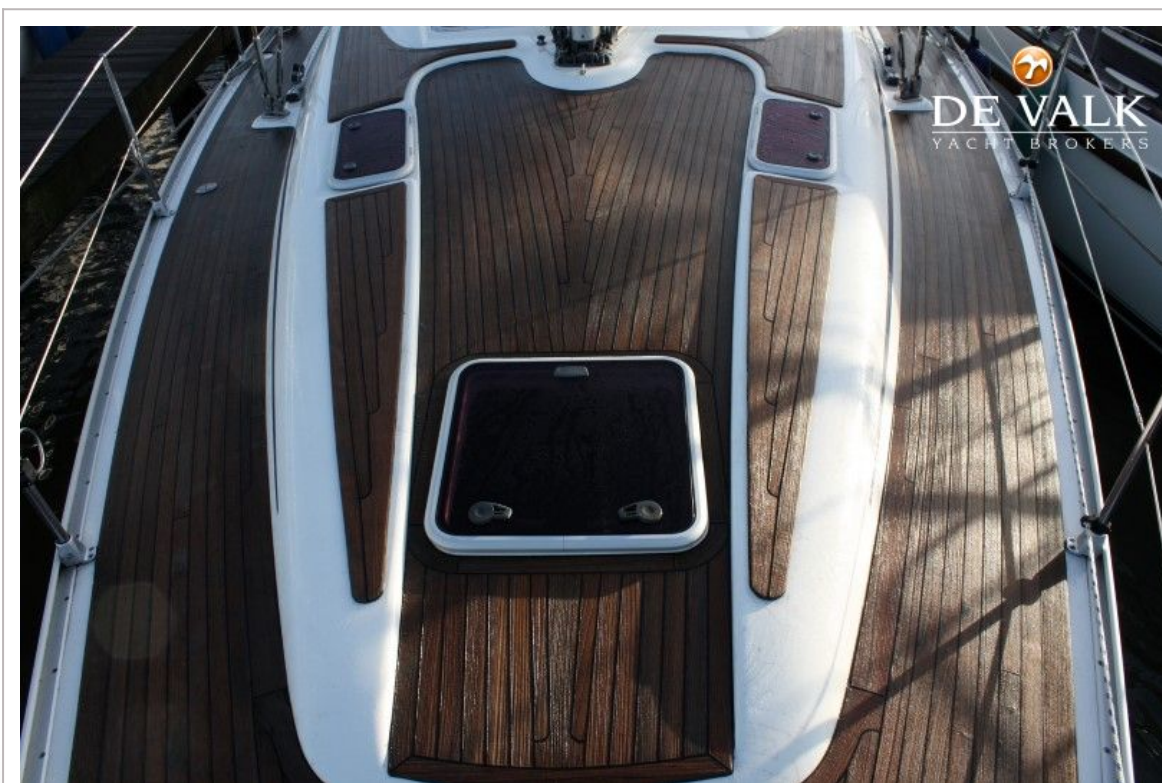
BAVARIA 42 CRUISER



BAVARIA 42 CRUISER



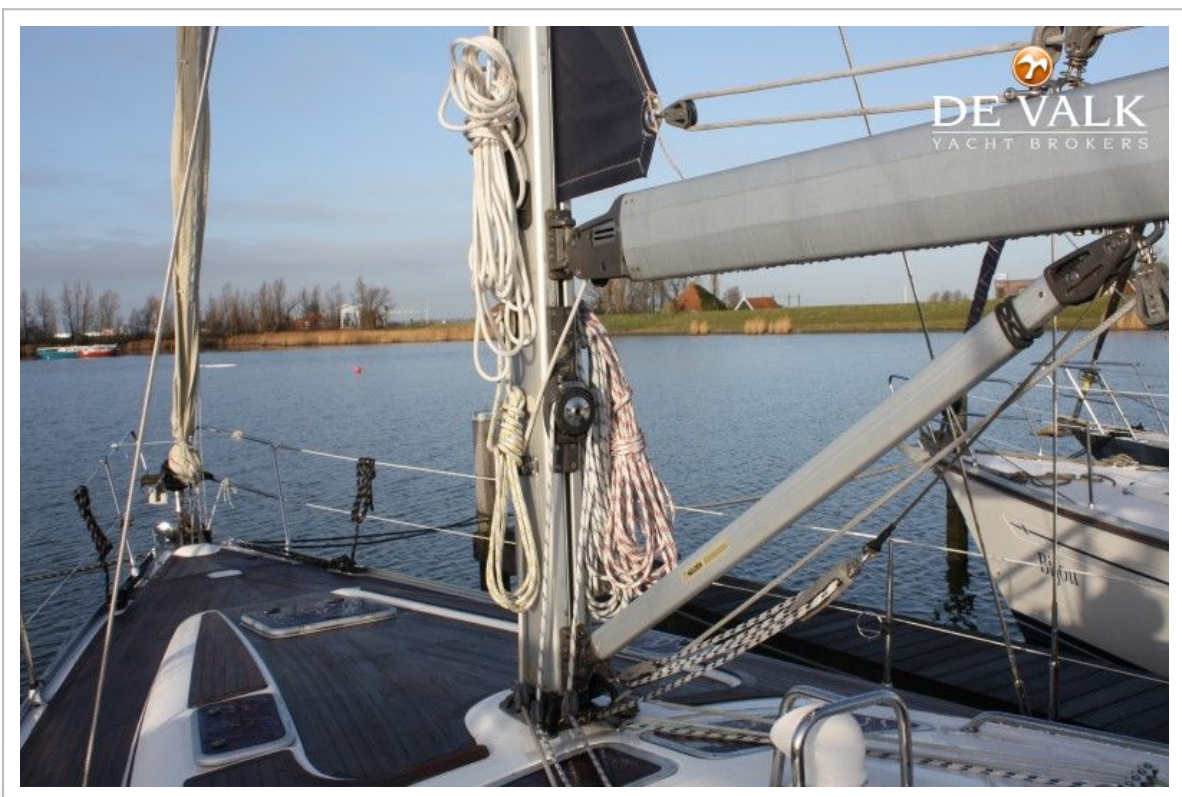
BAVARIA 42 CRUISER



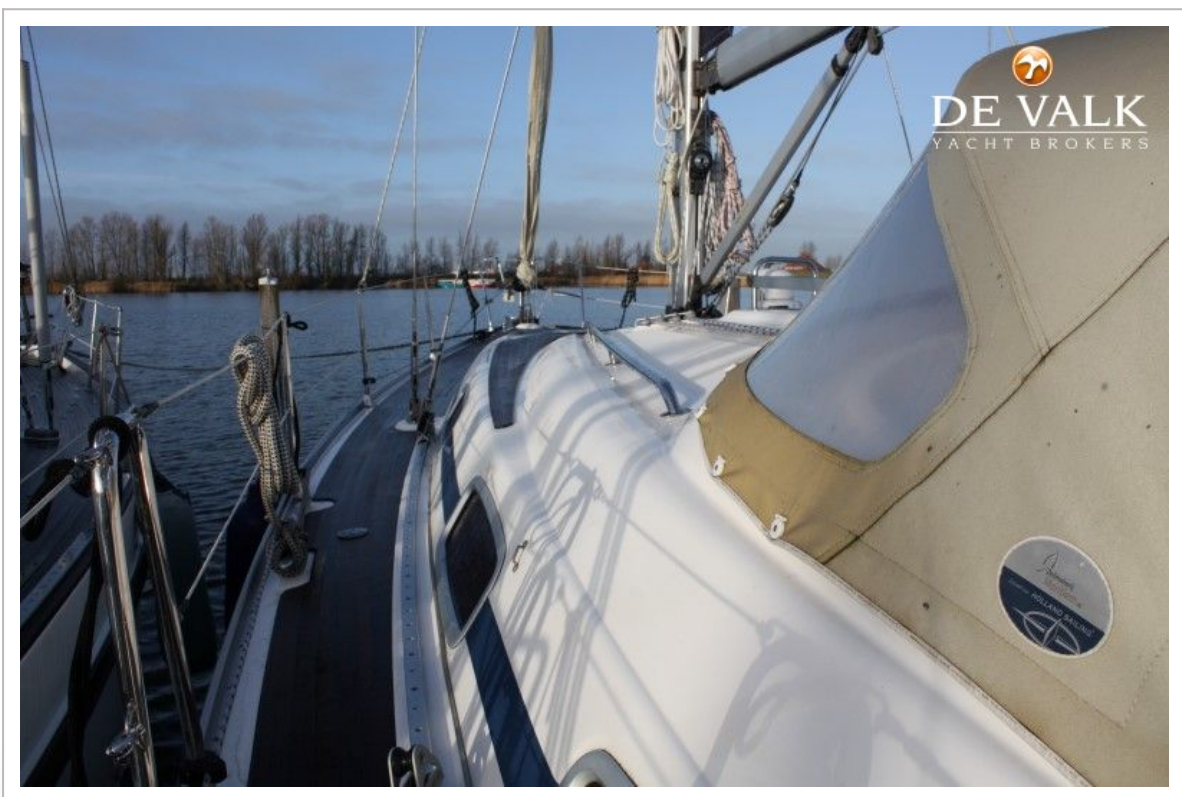
BAVARIA 42 CRUISER



BAVARIA 42 CRUISER



BAVARIA 42 CRUISER



BAVARIA 42 CRUISER



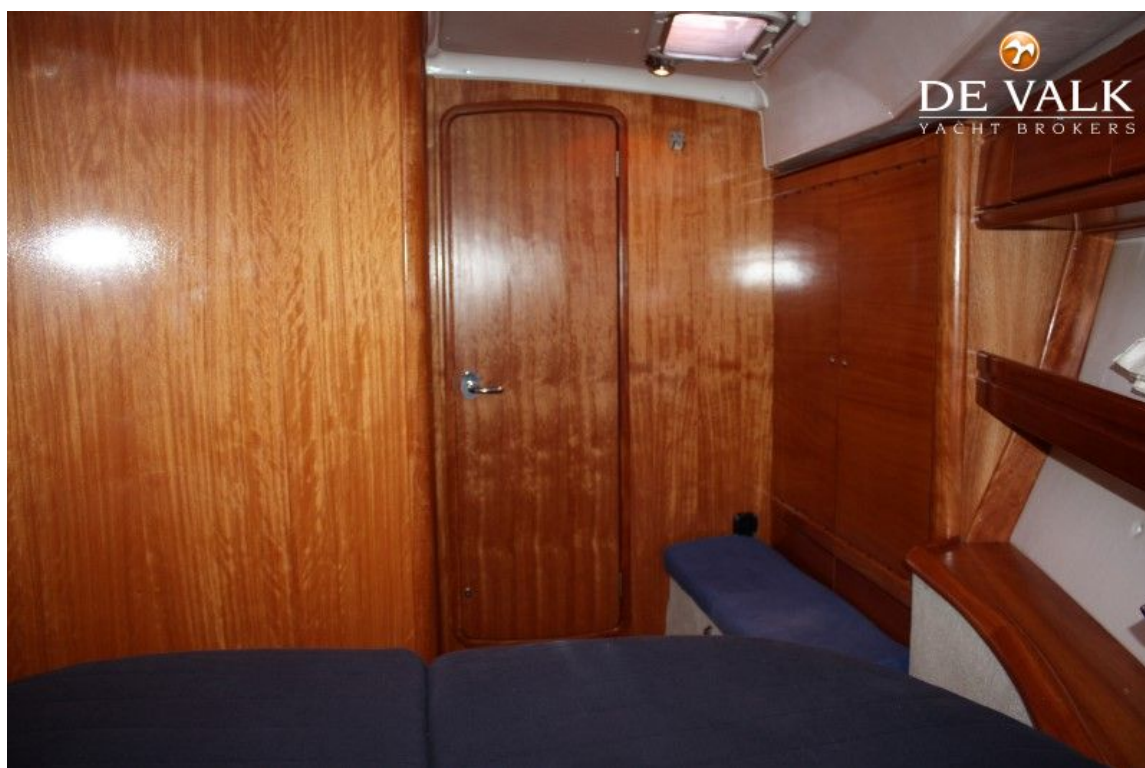
BAVARIA 42 CRUISER



BAVARIA 42 CRUISER



BAVARIA 42 CRUISER



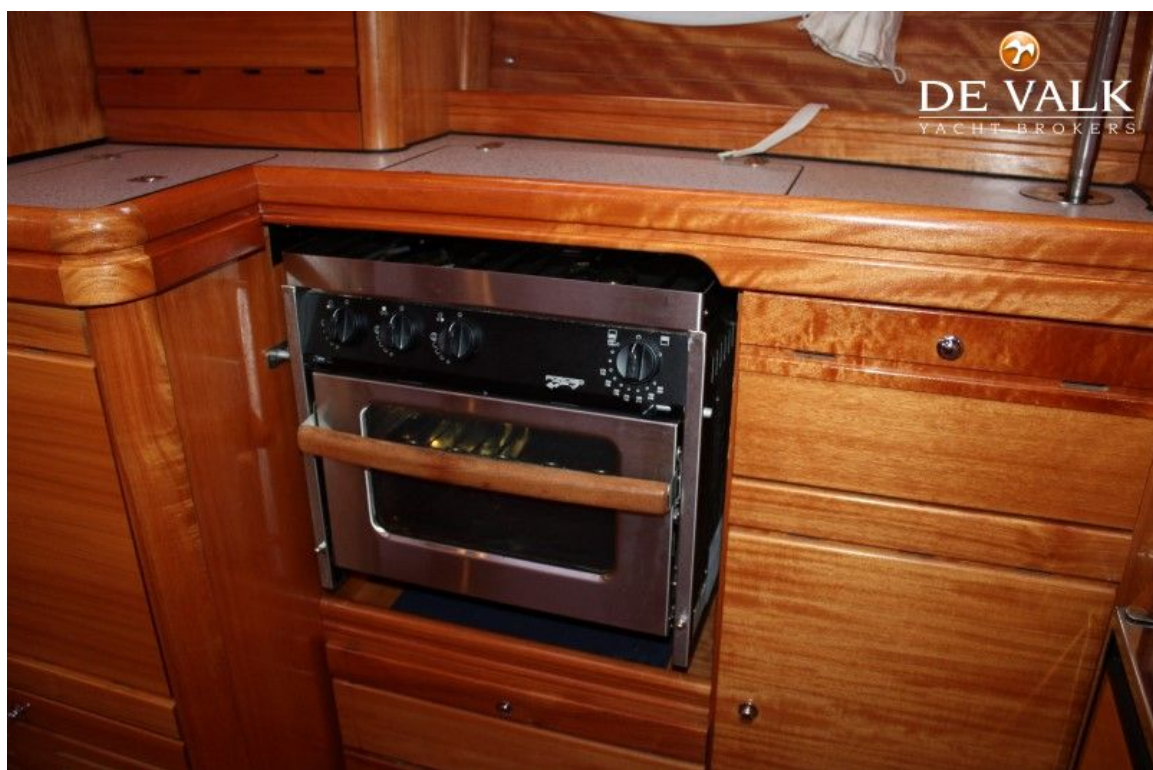
BAVARIA 42 CRUISER



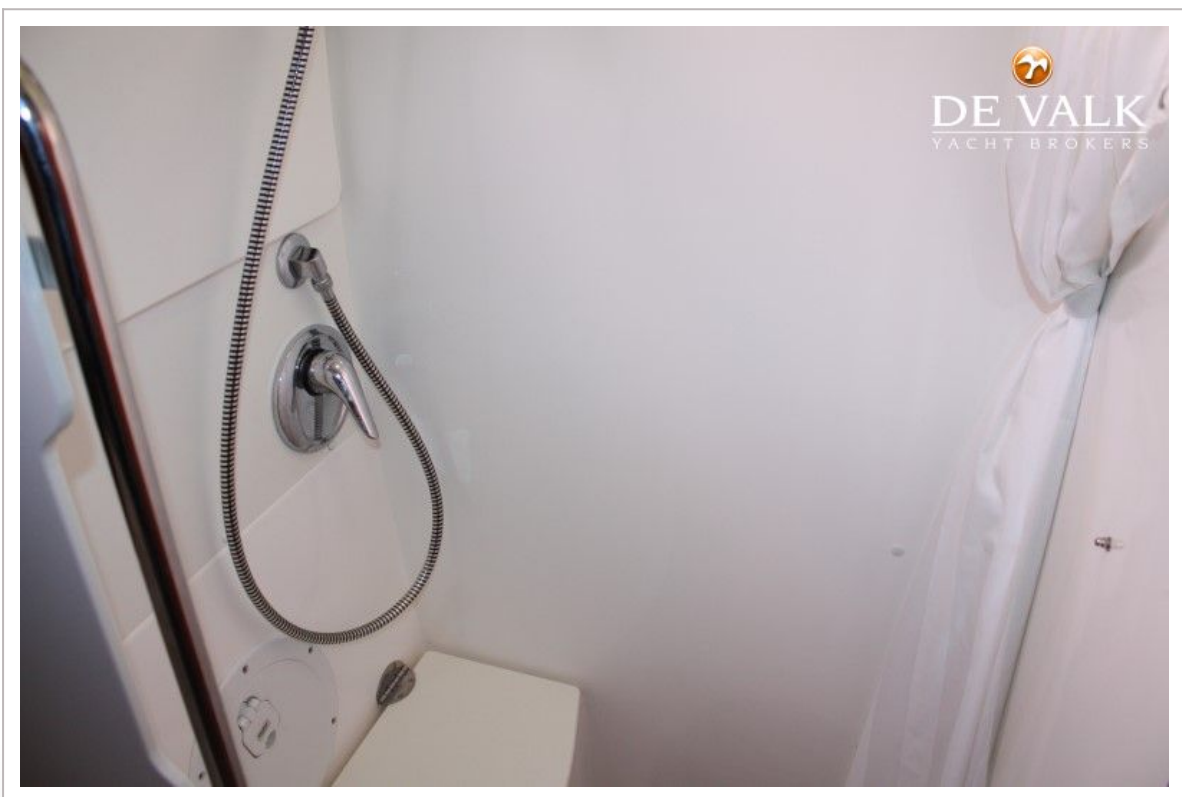
BAVARIA 42 CRUISER



BAVARIA 42 CRUISER



BAVARIA 42 CRUISER



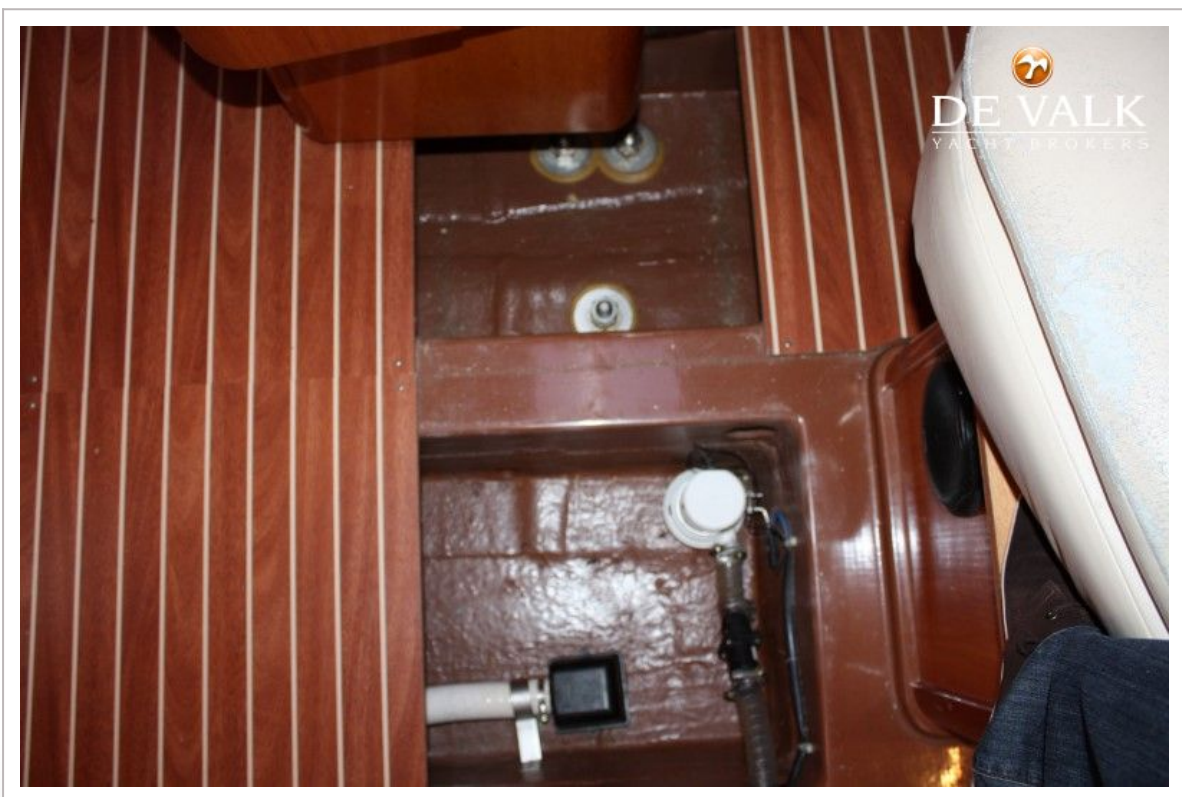
BAVARIA 42 CRUISER



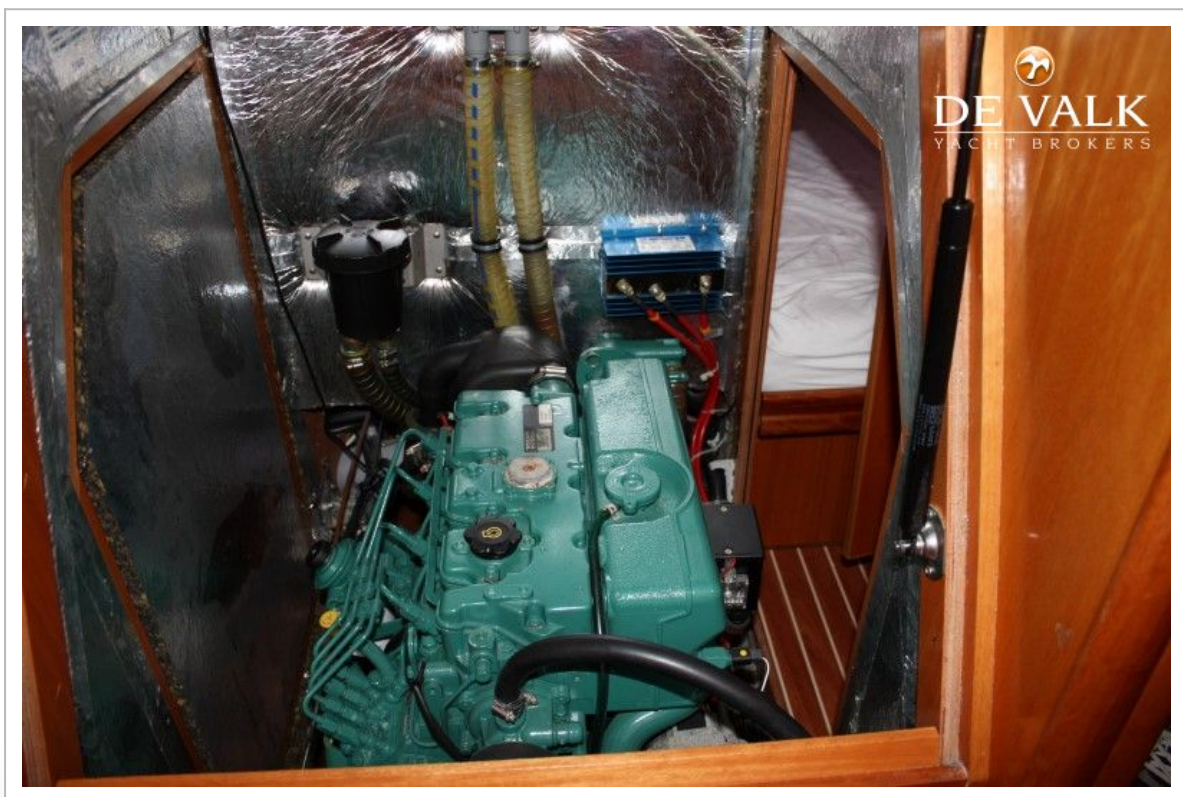
BAVARIA 42 CRUISER



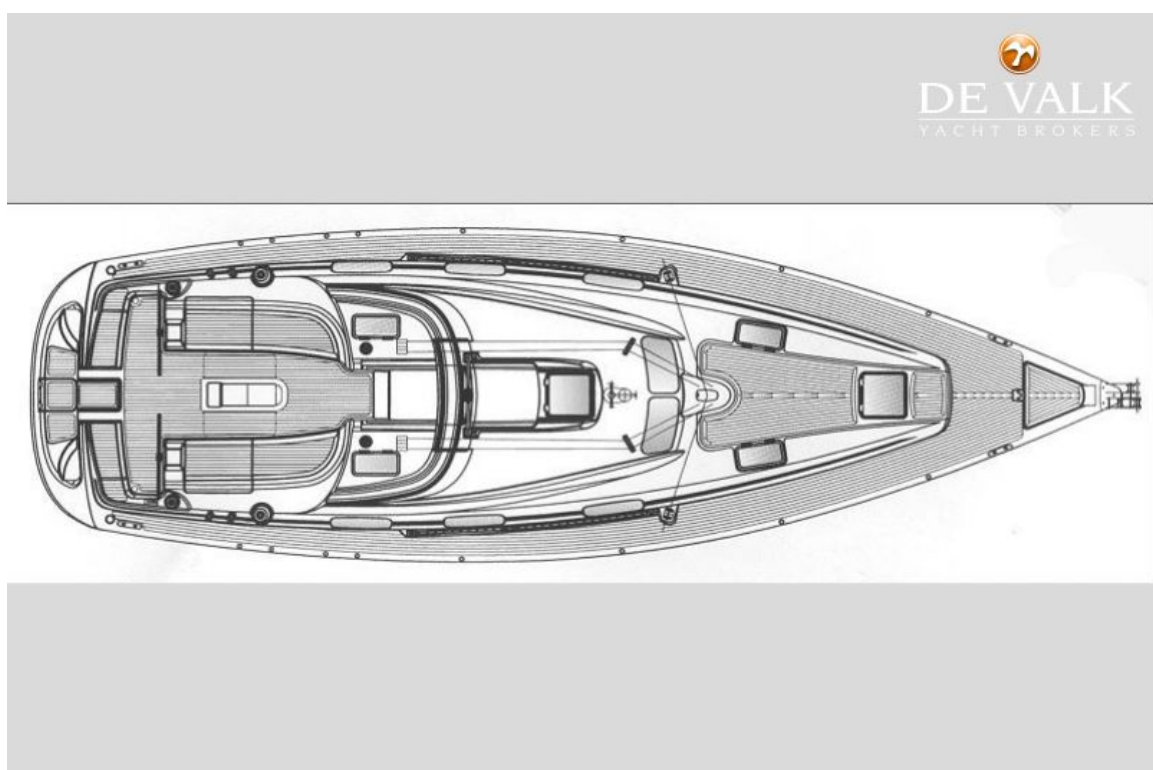
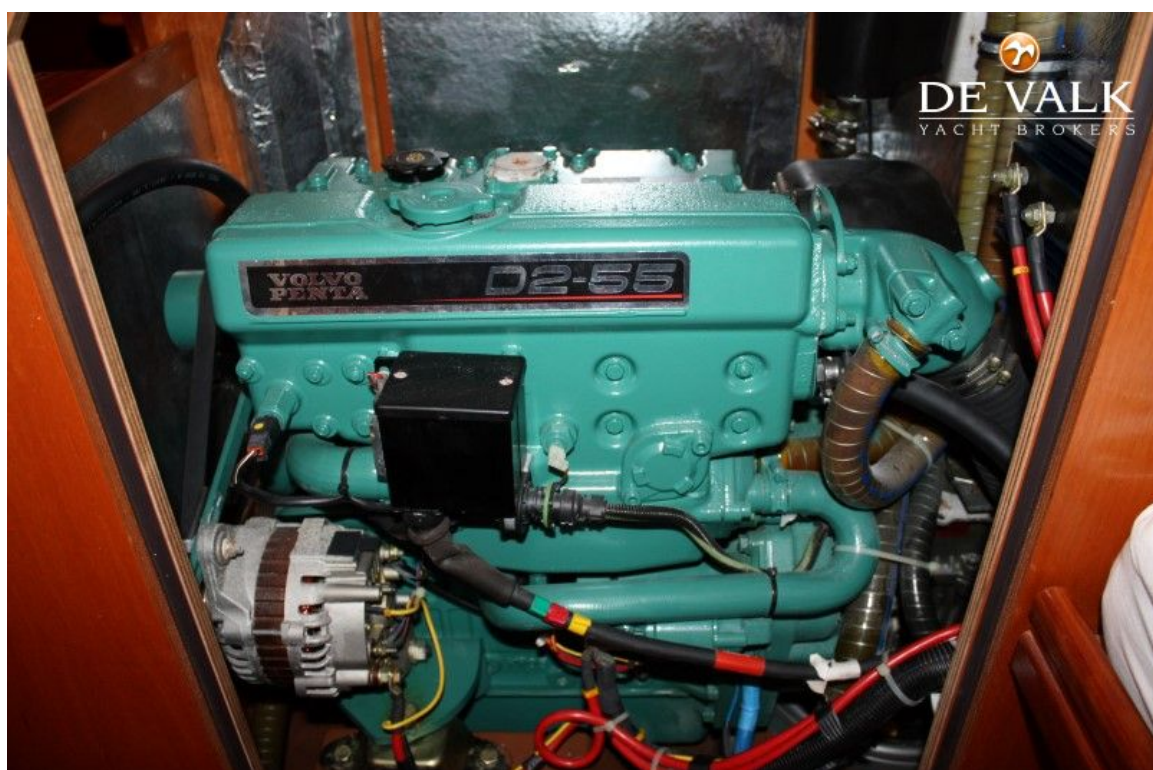
BAVARIA 42 CRUISER



BAVARIA 42 CRUISER



BAVARIA 42 CRUISER



BAVARIA 42 CRUISER

