



DE VALK
YACHT BROKERS

GRAND BANKS 42 CLASSIC



DE VALK
YACHT BROKERS

GRAND BANKS 42 CLASSIC

BROKER'S COMMENTS

This is the best GB42 I have ever seen. One owner from new. Impeccable condition. A complete work of art and love. There is not a single thing you could criticise. Perfect. Wood as good as the day it was built. A fantastic yacht by any standards. The new owner is going to be an extremely happy man.

Paul Galle

SPECIFICATIONS

Dimensions	13.00 x 4.00 x 1.60 (m)	Builder	American Marine
Built	1971	Cabins	2
Material	Mahogany	Berths	6
Engine(s)	2 x Ford 2714 diesel	Hp/Kw	2 x 120.00 (hp), 88.20 (kw)
Asking price	sold (VAT)	Lying	at sales office

CONTACT

Sales office	De Valk Palma	Telephone	+34 971 40 29 11
Address	Port. Cala Nova, Avda. Joan Miro, 327 07015 Palma de Mallorca ES	E-mail	palma@devalk.nl

DISCLAIMER

These particulars are given in good faith as supplied but cannot be guaranteed.



GRAND BANKS 42 CLASSIC

GENERAL

Model	GRAND BANKS 42 CLASSIC
Type	motor yacht
LOA (m)	13,00
Beam (m)	4,00
Draft (m)	1,60
Year built	1971
Builder	American Marine
Country	Hong Kong
Displacement (t)	16
Hull material	mahogany
Hull colour	White
Hull shape	Hard Chine
Superstructure material	Plywood
Superstructure (mm)	13
Rubbing strake	yes
Deck material	Teak on Ply
Deck finish	Teak
Superstructure deck finish	Non slip
Antifouling (year)	Annual 2017
Window frame	Wood S/S track
Window material	Laminated
Flybridge	yes
Flybridge suncover	New 2017
Mast can be lowered	yes
Steadying sail with mast	yes
Fuel tank (litre)	2400
Fuel tank 2 (litre)	Steel
Level indicator (fuel tank)	yes
Freshwater tank (litre)	2x417
Wheel steering	yes



GRAND BANKS 42 CLASSIC

Inside helm position	yes
Flybridge helm position	yes
Emergency tiller	yes
More info on paintwork	Awlgrip

ACCOMMODATION

Cabins	2
Berths	6
Floor	Parquet
Saloon	yes
Headroom saloon (m)	2
Aft Cabin	yes
Dinette	yes
Dinette to convert into berth	yes
Countertop	Formica
Sink	2x S/S
Cooker	4 burner vitro neff
Oven	Electric
Extractor	yes
Fridge	yes
Freezer	yes
Kettle	yes
Ice maker	yes
Crockery	yes
Owners cabin	Aft 2 berth
Wardrobe	yes
Bathroom	yes
Toilet	Raritan PHE II
Toilet system	Electric
Wash basin	yes
Shower	yes



GRAND BANKS 42 CLASSIC

Bath tub	yes
Guest cabin 1	yes
Bed length (m)	2 berth
Bathroom	yes
Toilet	Raritan PHE II
Toilet system	Electric
Wash basin	yes
Shower	yes

MACHINERY

No of engines	2
Make	Ford
Type	2714
HP	120,00
kW	88,20
Fuel	diesel
Year installed	1971
Maximum speed (kn)	10
Cruising speed (kn)	8
Consumption (l/hr)	20
Range (nm)	1000
Engine cooling system	Heatechanger
Engine controls	Morse double lever
Gearbox	Borge Warner Velvet drive
Propeller type	yes
Propeller blades	3
Propeller shaft material	Aquamet
Shaft lubrication	Water
Manual bilge pump	Whale
Electric bilge pump	2 auto submersible
Electrical installation	220v 12vdc



GRAND BANKS 42 CLASSIC

Generator	Onan 11kw
Running hours generator	1300
Generator 2	Zeise
Running hours generator 2	10400
Batteries	12v
Battery charger	40 Amp
Shorepower	yes

NAVIGATION

Compass	Cassiens & plth
Compass on flybridge	B&G
Electric compass	Flybridge
Depth sounder	B&G
Log	B&G
Windset	B&G
Repeater	yes
VHF	yes
Autopilot	Benmar 14
Plotter	Simrad
Electronis chart(s)	West Med
Radio receiver	ICOM SSB
Transmitter	ICOM SSB
EPIRB	yes
Searchlight	yes

EQUIPMENT

Bathing platform	yes
Boarding ladder	yes
Gangway	yes
Deck shower	yes
Anchor	20kg Lewmar S/S Claw



GRAND BANKS 42 CLASSIC

Anchor chain	100m S/S. 10mm
Anchor 2	20kg Bruce
Anchor chain	100m 10mm galvanised
Other ground tackle	2 Brittany Anchors
Windlass	Orvia 2000w
Deck wash	Salt and Sweet
Davits	S/S
Davits controls	Manual
Sea railing	Varnished teak in Brass stanchion
Grab rail (superstructure)	Varnished Teak
Railing side opening gates	Port & Stbd
Pulpit	S/S
Life raft	Zodiac
Life raft (pers)	8
Last life raft survey	2016
Horn	yes
Radar reflector	yes
Fenders	yes
Mooring lines	yes
Spare parts	yes
Tools	yes
TV	yes
Cockpit speakers	yes
Speakers in salon	yes
Speakers in cabin	yes
Clock - barometer	yes
Fire extinguisher	5
Latest extinguisher survey	2016
Extra info	Dive Compressor
Extra info	Engine Spares



GRAND BANKS 42 CLASSIC

RIGGING

Staysail

yes



GRAND BANKS 42 CLASSIC



GRAND BANKS 42 CLASSIC



GRAND BANKS 42 CLASSIC



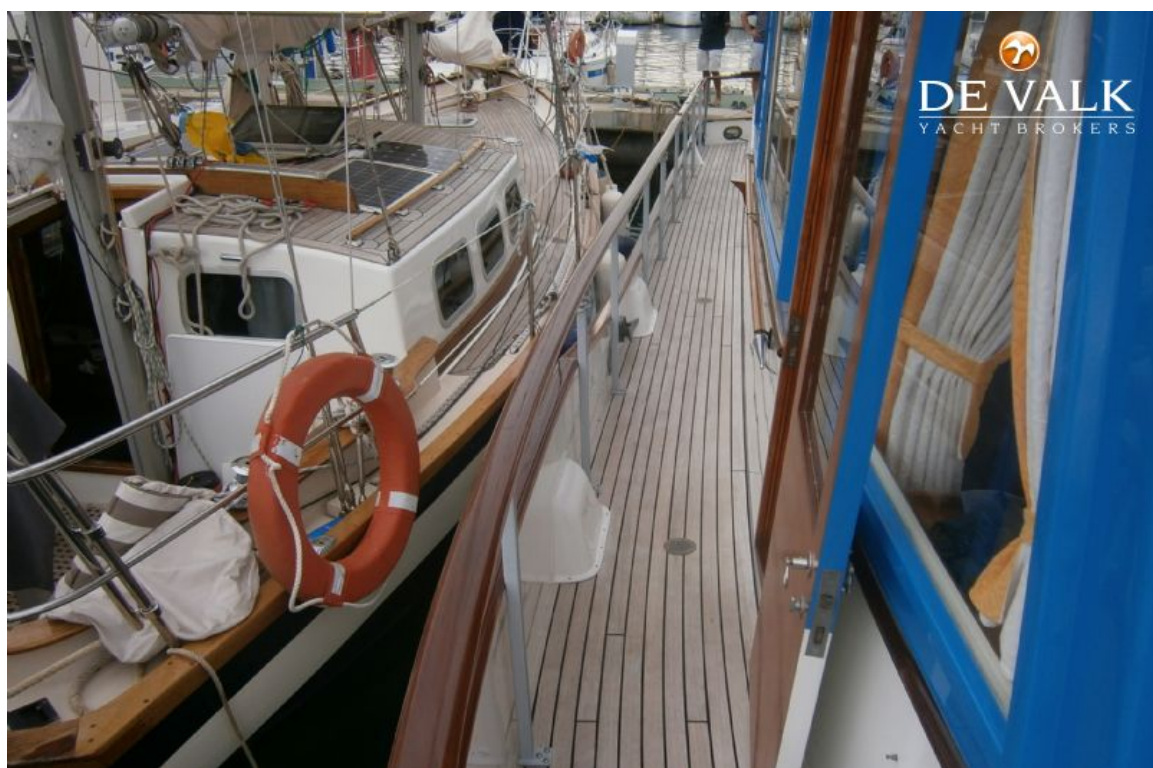
GRAND BANKS 42 CLASSIC



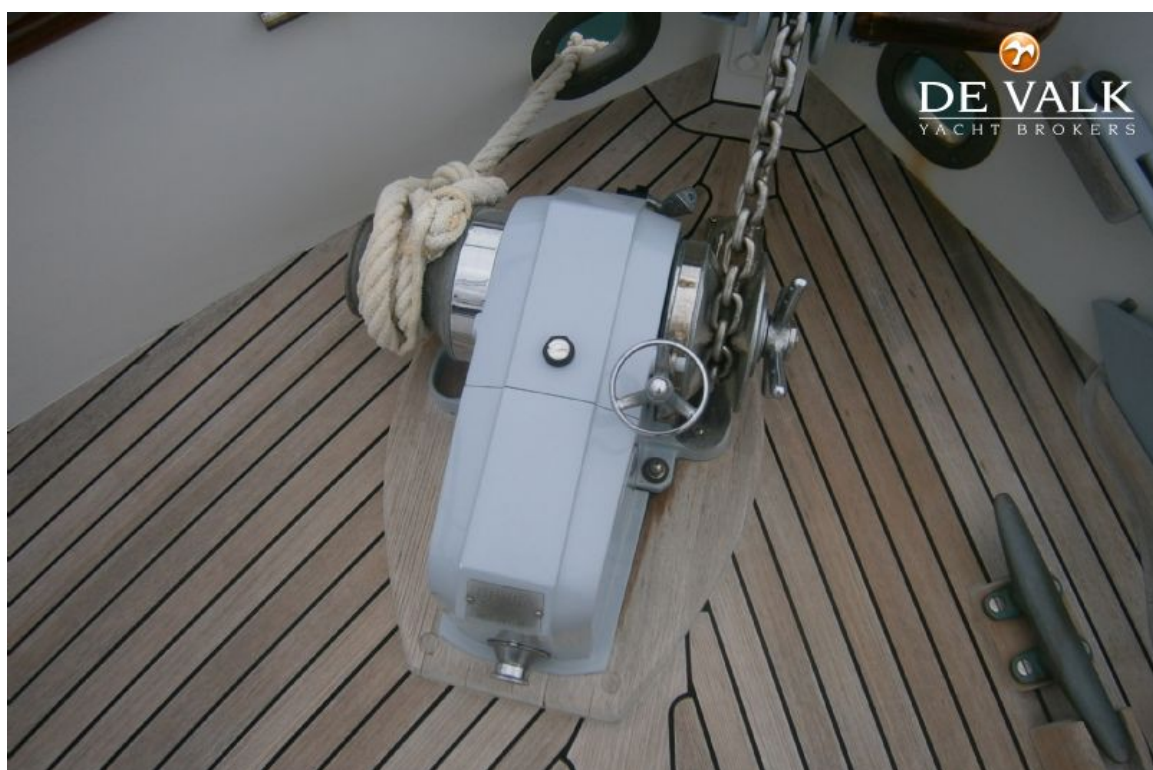
GRAND BANKS 42 CLASSIC



GRAND BANKS 42 CLASSIC



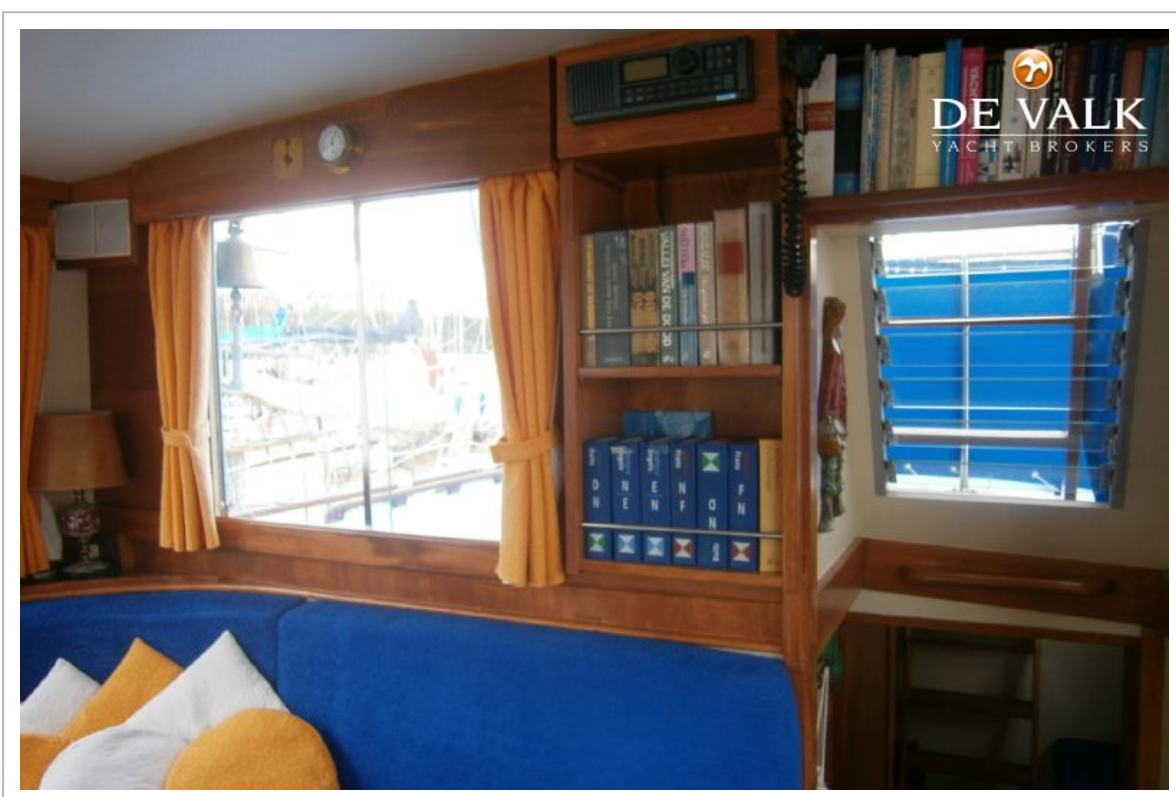
GRAND BANKS 42 CLASSIC



GRAND BANKS 42 CLASSIC



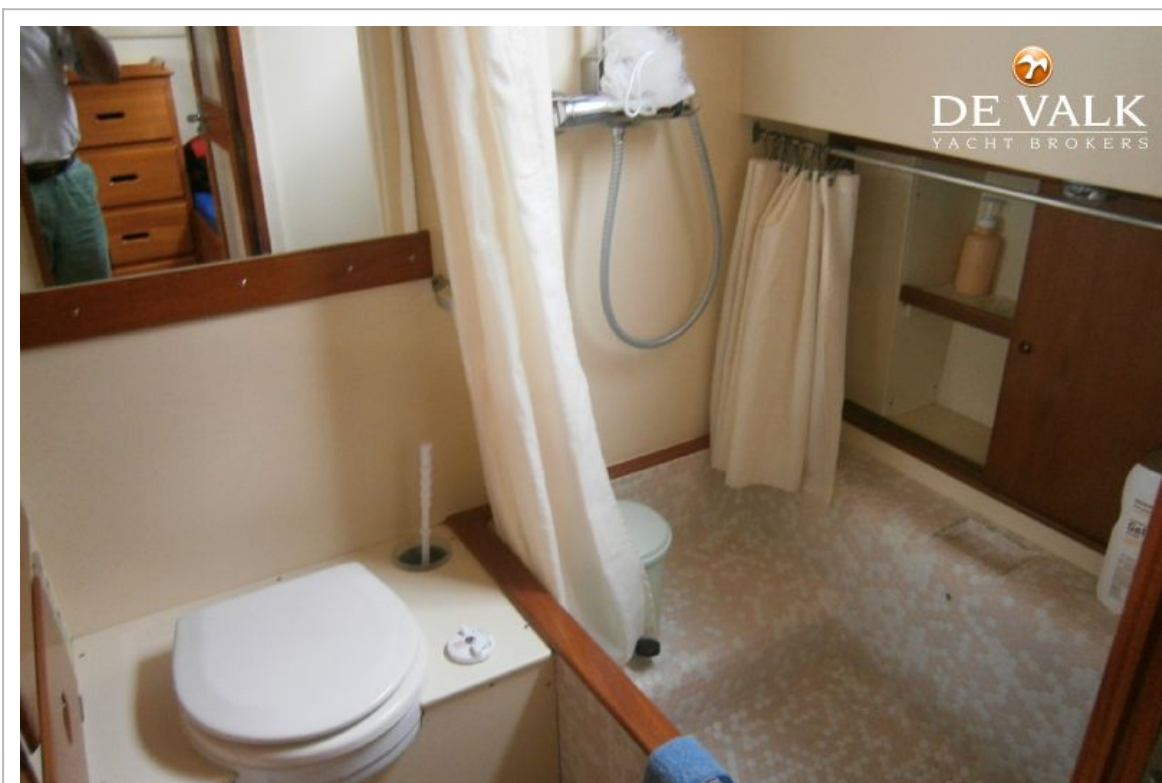
GRAND BANKS 42 CLASSIC



GRAND BANKS 42 CLASSIC



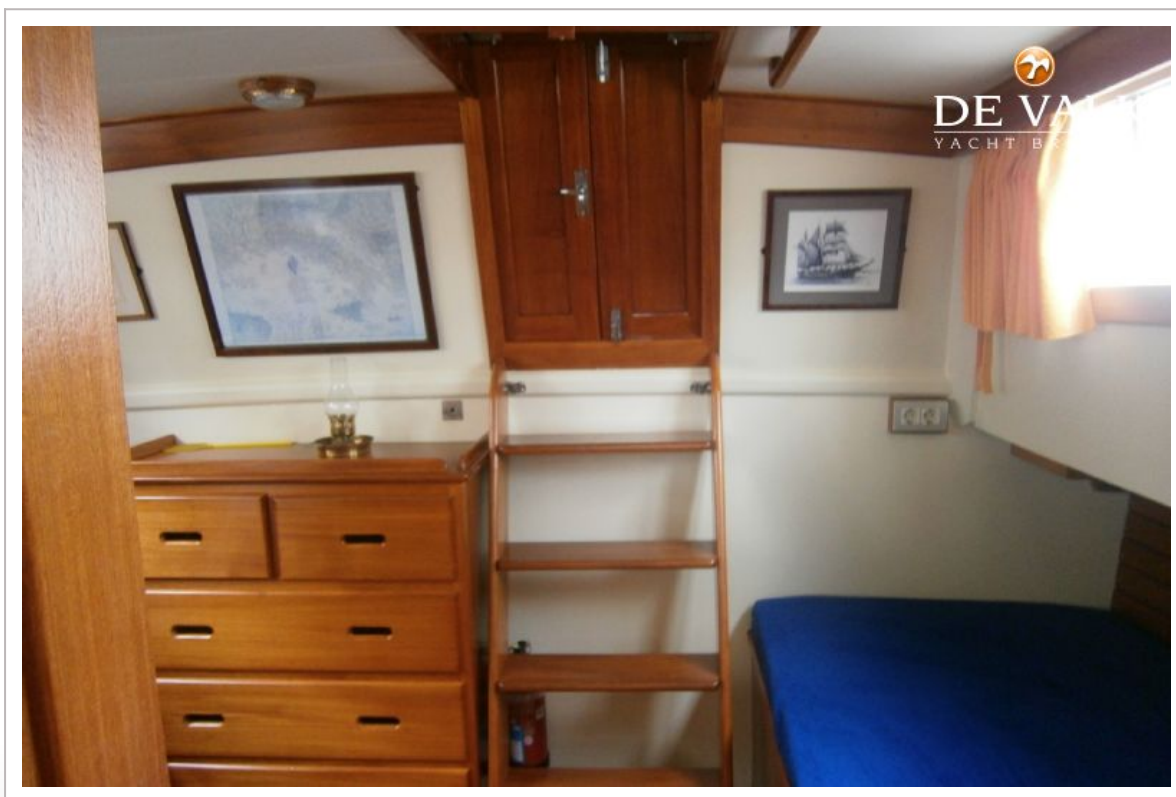
GRAND BANKS 42 CLASSIC



GRAND BANKS 42 CLASSIC



GRAND BANKS 42 CLASSIC



GRAND BANKS 42 CLASSIC



GRAND BANKS 42 CLASSIC

