



DE VALK
YACHT BROKERS



HEESEN 35 M



DE VALK
YACHT BROKERS

BROKERAGE | CHARTER | BERTHS | FINANCE | INSURANCE | YACHT MANAGEMENT

BROKER'S COMMENTS

OPUS II is designed by the world famous yacht designers Francesco Paszkowski and Evan K Marshal, decorated and furnished by Gianni Versace, built by the high quality shipyard Heesen. The price is very low due to the pending maintenance on MTU and the Kamewa drives. She has a great basic construction, but will need a caring hand and full paint job and new teak to bring her back to her glory.

Tue Simon Fasting

SPECIFICATIONS

Dimensions	35.00 x 7.12 x 3.74 (m)	Builder	Heesen
Built	1997	Cabins	3
Material	Aluminium	Berths	6
Engine(s)	2 x MTU 396TB 16V diesel	Hp/Kw	2 x 3,500.00 (hp), 2,572.00 (kw)
Asking price	sold (VAT)	Lying	at sales office

CONTACT

Sales office	De Valk Barcelona	Telephone	+34 932 202 825
Address	Barcelona region 08392 Barcelona ES	E-mail	barcelona@devalk.nl

DISCLAIMER

These particulars are given in good faith as supplied but cannot be guaranteed.



GENERAL

Model	HEESEN 35 M
Type	motor yacht
LOA (m)	35,00
LWL (m)	31,00
Beam (m)	7,12
Draft (m)	3,74
Air draft (m)	10,00
Headroom (m)	2,10
Year built	1997
Launched	1997
Builder	Heesen
Country	The Netherlands
Designer	Francesco Paszkowski
Displacement (t)	271
Gross tonnage	271
Net tonnage	81
CE norm	A
Hull material	aluminium
Hull colour	Off white
Superstructure material	Aluminium
Deck material	aluminium
Deck finish	teak
Antifouling (year)	2018
Window frame	aluminium
Window material	glass
Portholes	stainless steel
Flybridge	Yes
Radar arch	non collapsible
Fuel tank (litre)	aluminium 25000 total in 5 tanks
Level indicator (fuel tank)	Yes



Fuel daytank (litre)	aluminium 4800
Level indicator (daytank)	Yes
Freshwater tank (litre)	aluminium 2000
Level indicator (freshwater)	Yes
Blackwater tank (litre)	aluminium 1500
Blackwater tank extraction	pump 400V Pump
Wheel steering	powersteer
More info on hull	Sea chest refit 2015
Extra info	Hull thickness test 2015 as per construction drawings

ACCOMMODATION

Cabins	3
Berths	6
Crew cabin	3
Crew berths	5
Interior	mahogany Designer Evan K Marshall Gianni Versace
Layout	3 decks
Floor	carpet Marble and carpet
Heating	central heating
Air-conditioning	reverse cycle airco Central air marine
Chart table	Yes
Galley	Gaggenau
Countertop	marble
Sink	stainless steel 2 sinks
Oven	Gaggenau
Extractor	Yes
Microwave	Gaggenau
Fridge	yes
Freezer	yes
Hot water system	on central heating Hot water circulation pump
Water pressure system	electrical



Dishwasher	Gaggenau
Coffee maker	Jura Swiss full automatic
Crockery	Alessi plates, glasses and silver ware + fine china
Waste compactor	Yes
Owners cabin	double bed Tri Floor cabin
Wardrobe	hanging/drawers/shelves 4 Large capacity
Bathroom	en suite
Toilet	en suite
Toilet system	vacuum Evac central system
Wash basin	in the bathroom 2 Gold plated
Shower	en suite
Bath tub	en suite
Jacuzzi	yes
Guest cabin 1	double bed En Suite
Bed length (m)	2,2
Wardrobe	hanging and drawers 1 Large 1 Small
Bathroom	en suite
Toilet	en suite
Toilet system	vacuum Evac marine
Wash basin	in the bathroom
Shower	en suite
Guest cabin 2	double bed En Suite
Wardrobe	hanging and drawers 1 Large 1 Small
Bathroom	en suite
Toilet	en suite
Toilet system	vacuum Evac Marine
Wash basin	in the bathroom
Shower	en suite
Extra info	Versace pillows and covers for the beds
Crew cabin(s)	3
Bathroom (crew)	3
Toilet (crew)	3



Toilet system	vacuum
Shower (crew)	3
Extra info	Very spacious crew area
Washing machine	2xMiele
Dryer	2xMiele
Central vacuum cleaner	yes

MACHINERY

No of engines	2
Make	MTU
Type	396TB 16V
HP	3500
kW	2572,00
Fuel	diesel
Maximum speed (kn)	35,00
Cruising speed (kn)	15,00
Consumption (l/hr)	500
Range (nm)	1400
Engine hours	3000
Engine cooling system	seawater 2x MTU Heatexchanger
Drive	jet-drive
Engine controls	electrical 2x MTU CPU controls
Gearbox	mechanical 2xZDF
Engine controls	electrical Kamewa Rolls Royce
Bowthruster	hydraulic Hydraulic
Sternthruster	hydraulic Hydraulic telescope
Propeller type	JET
Propeller shaft material	Stainless Steel
Electrical installation	Tijssen Elektrik
Generator	silent separator Northern Lights
Running hours generator	4400



Generator 2	silent separator Northern Lights
Running hours generator 2	3800
Start battery	6 Gel
Service battery	Low maintenance
Battery charger/inverter	Mastervolt
Shorepower	with cable
Watermaker	Hem Watermaker
Trimtabs	yes
Extra info	Stern thruster overhaul 2016

NAVIGATION

Compass	Gyro Simrad R80
Compass on flybridge	Gyro Simrad R80
Depth sounder	Foruno
Forw. looking depth sounder	Echo Pilot
Log	Walker
Windset	Walker
Repeater	Walker
Fish finder	Foruno LS6100
VHF	Skanti
VHF handheld	Skanti
Autopilot	Robertson/Simrad SHS500
Radar	Kelvin Hughes
GPS	Foruno
Plotter	Simrad
Plotter/GPS	Simrad CP33
Radar/GPS	yes
Radar/plotter	Foruno Nav Net
Weather receiver	Foruno DFax
Radio receiver	yes
Transmitter	yes



EPIRB	yes
Personal MOB transmitter	yes
Camera	yes
Navigation lights	yes
Searchlight	2xSanchin HR 1012 NEW

EQUIPMENT

Bathing platform	6 X 2 meters
Boarding ladder	stainless steel
Transom door	Heesen
Gangway	yes
Deck shower	yes
Dinghy	rigid hull
Deck crane	hydraulic
Life raft	container 2xZodiac +2 Flugzug
Life raft (pers)	36
Lifejackets	16
Safety harness	1
Lifebuoy	2
Fenders	Yes - 2015
Alarm system	EAO Swiss
TV	4xBang&Olufsen
TV receiver	Yes
Satellite	Yes
Radio-cd player	Bang&Olufsen
DVD player	yes
iPod connection	yes
Speakers in salon	Bang&Olufsen
Speakers in cabin	Bang&Olufsen
Clock - barometer	Yes
Fire extinguisher	14



Latest extinguisher survey	2017
Extinguisher in engine room	Yes
Auto extinguisher system	CO2
Extra info	Yamaha jetski 1200 waverunner
Extra info	Jet tender Novamarine



HEESEN 35 M



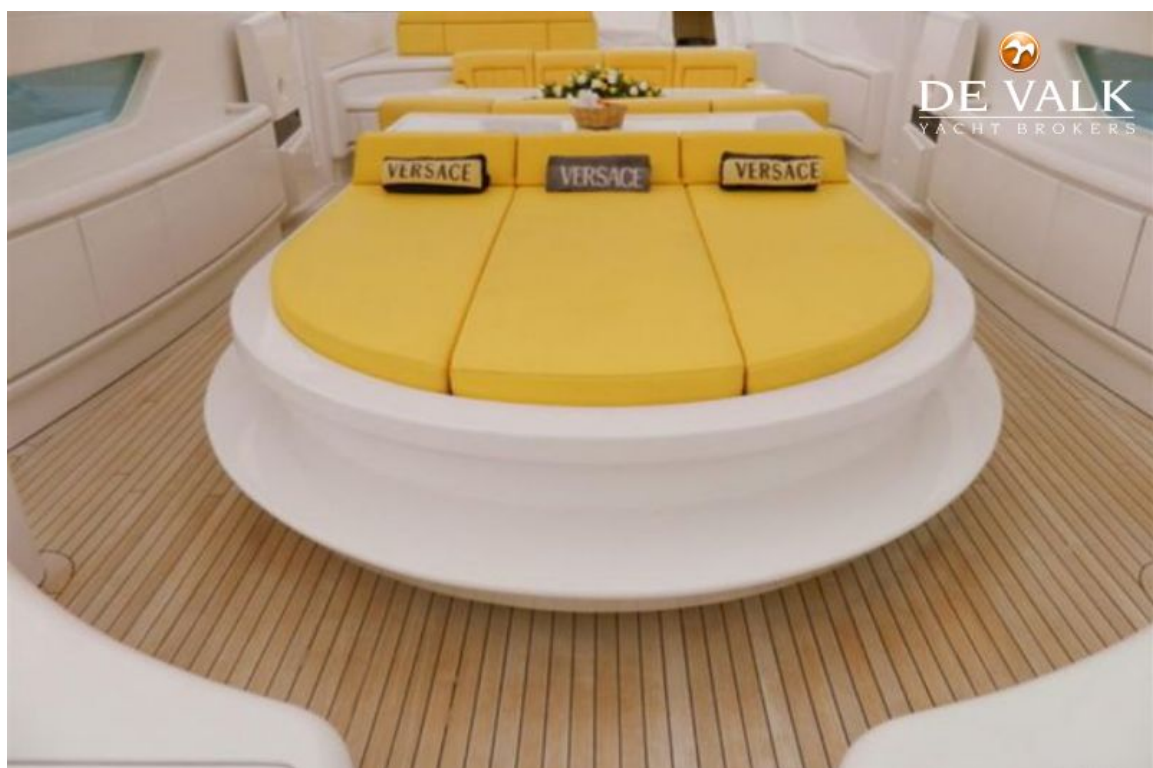
HEESEN 35 M



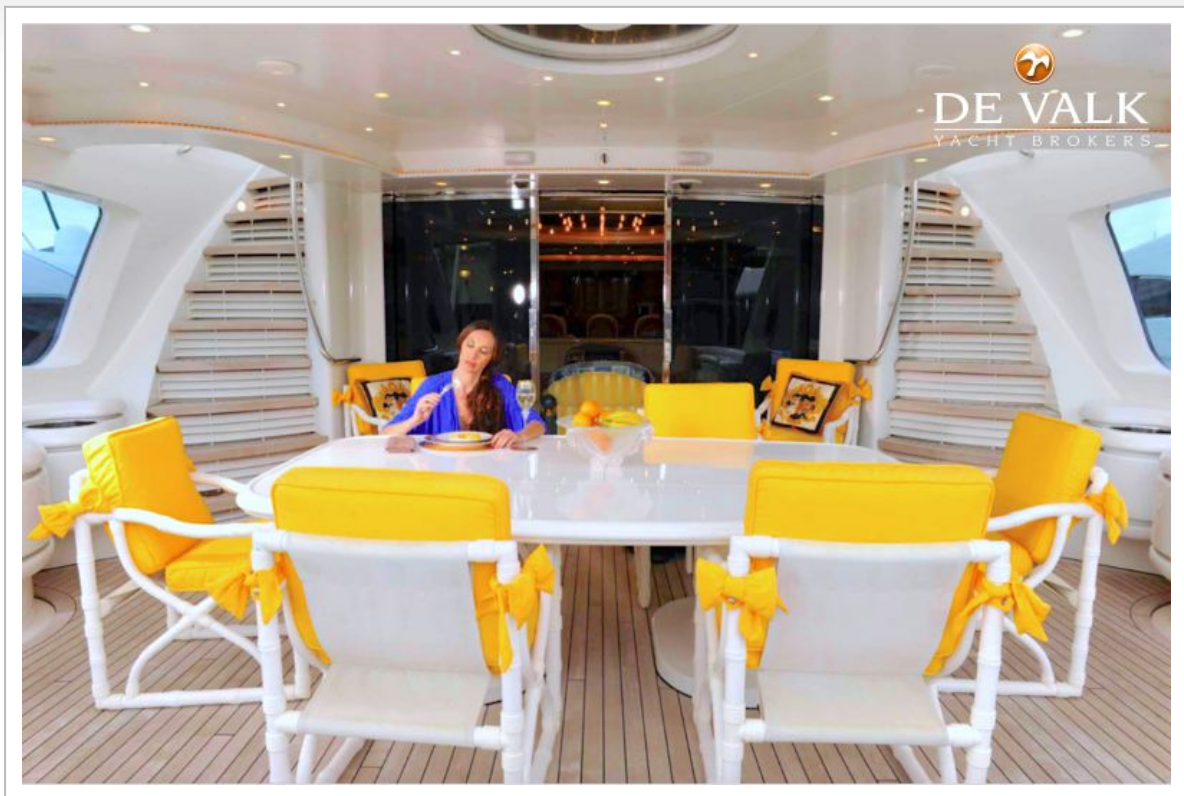
HEESEN 35 M



HEESEN 35 M



HEESEN 35 M



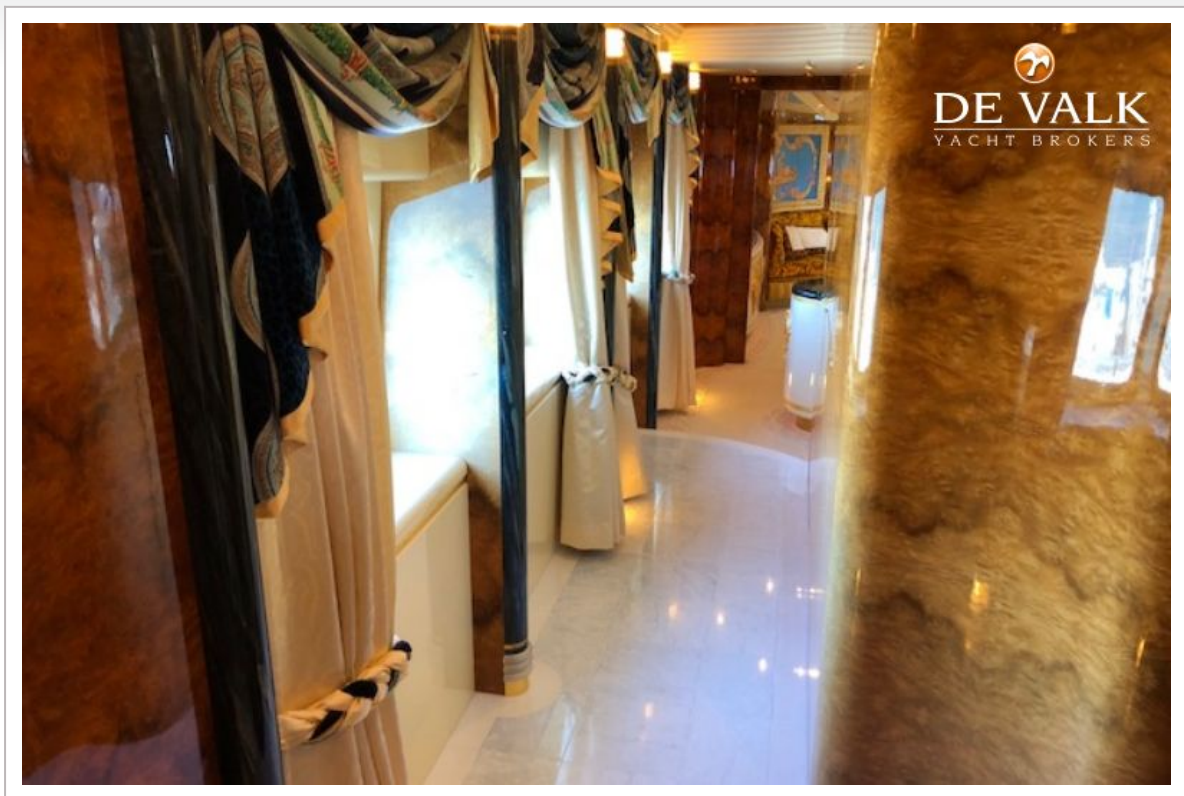
HEESEN 35 M



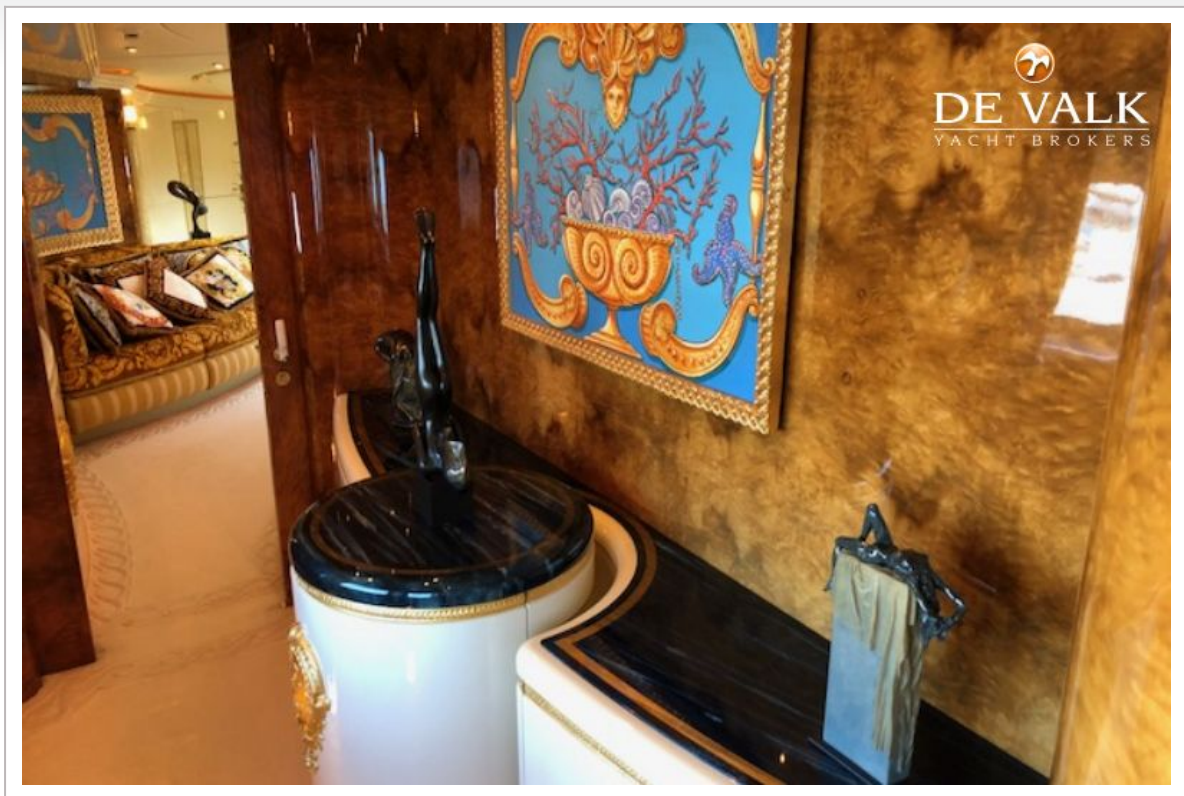
HEESEN 35 M

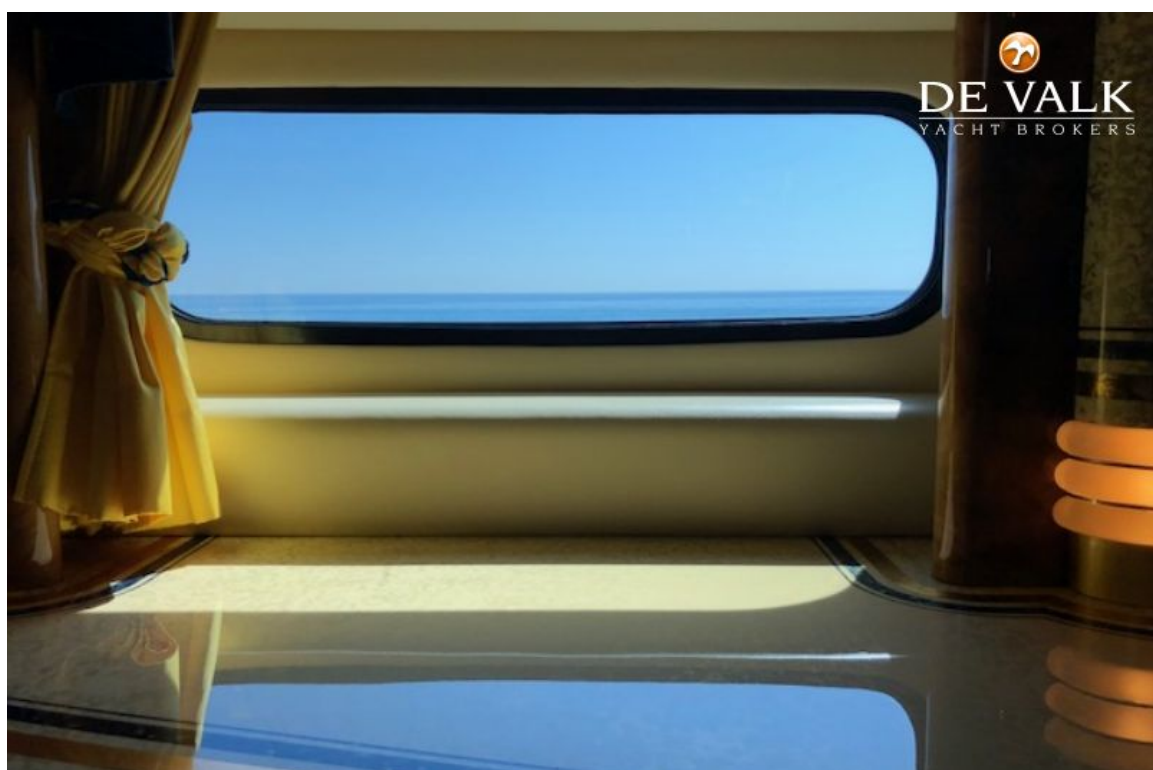


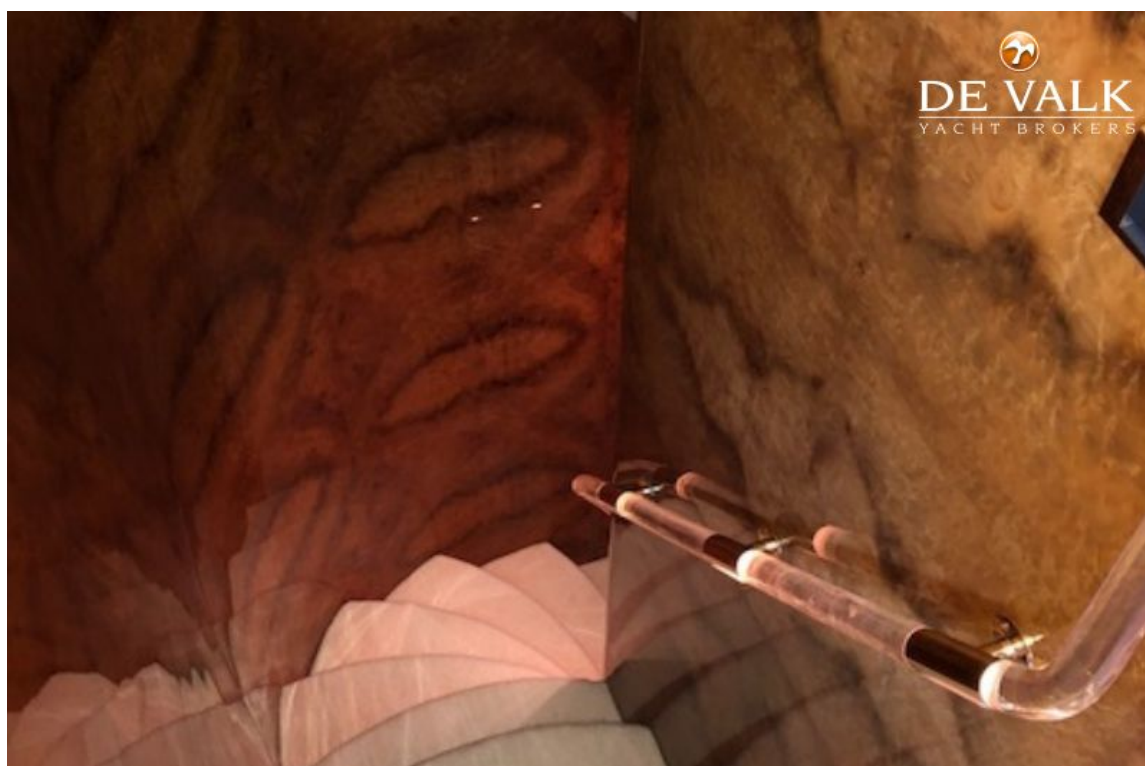
HEESEN 35 M



HEESEN 35 M



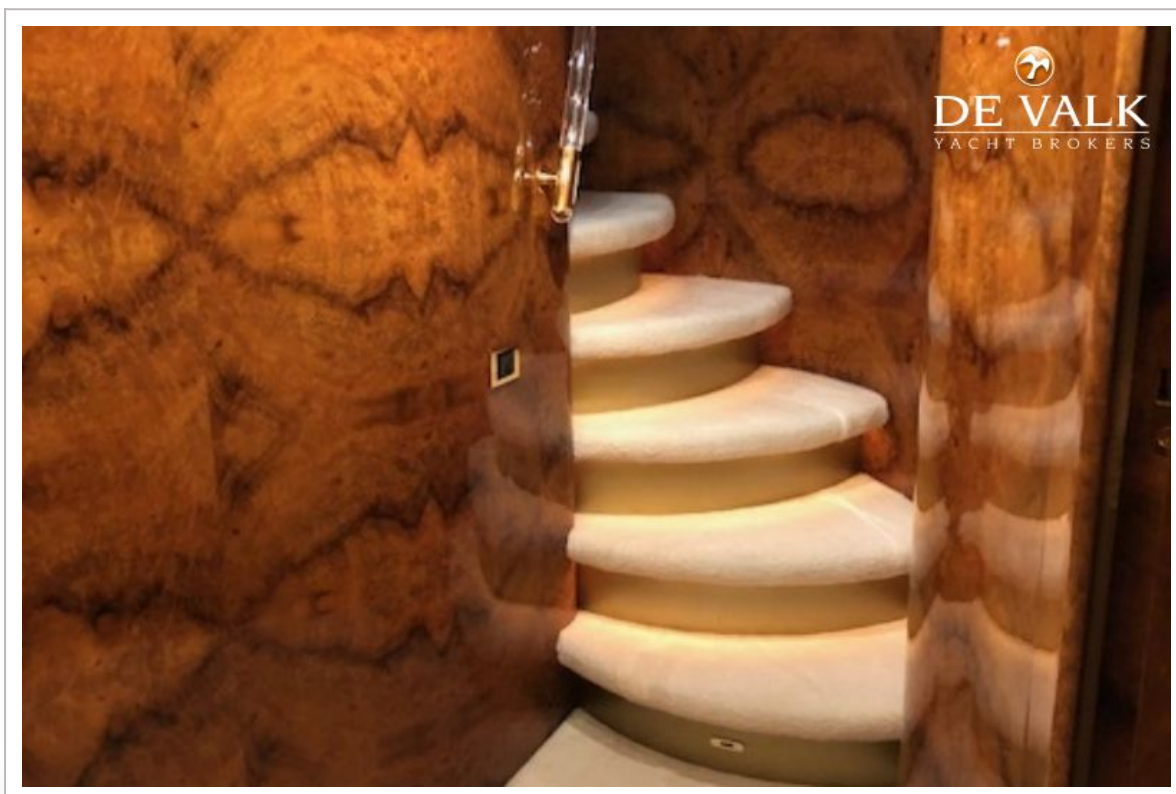
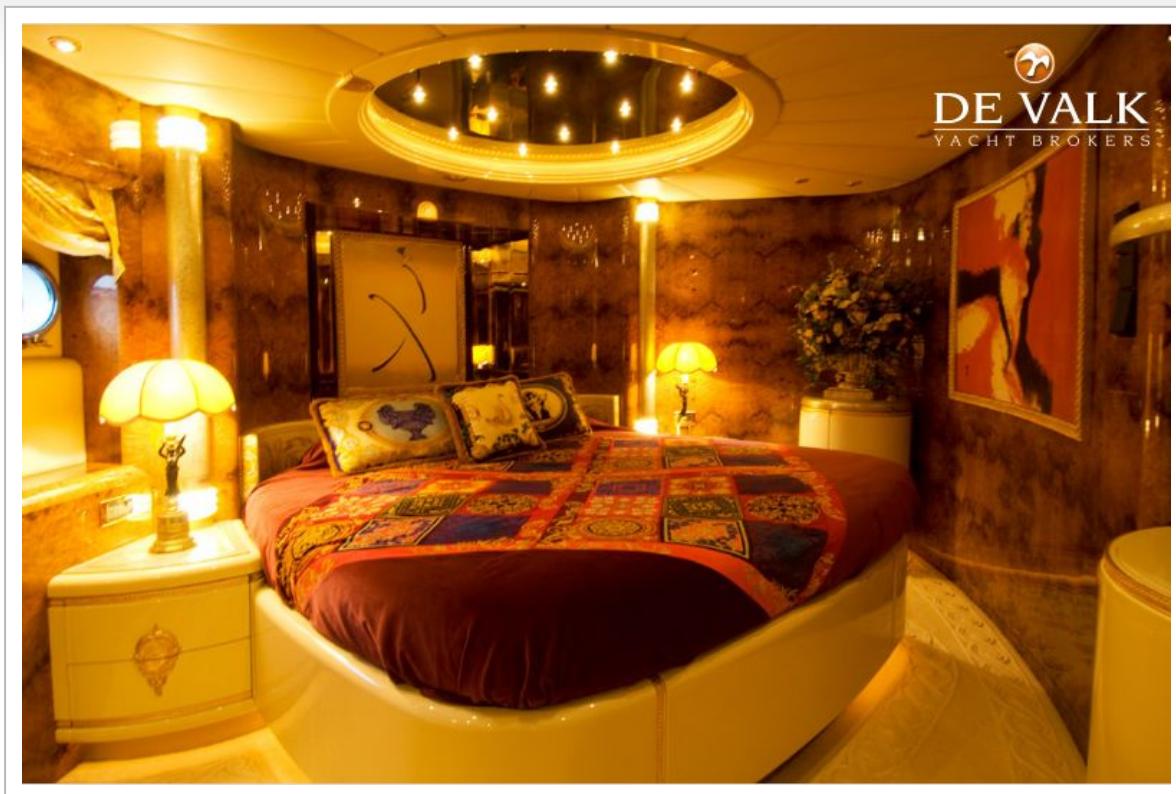




HEESEN 35 M



HEESEN 35 M



HEESEN 35 M

