



DE VALK
YACHT BROKERS



DUFOUR 412 GRAND LARGE



DE VALK
YACHT BROKERS

DUFOUR 412 GRAND LARGE

BROKER'S COMMENTS

Re styled version of the successful 410, inspired by larger yachts, she has been redesigned, to maximise the comfort on board, yet not compromising sailing performance and easy handling, typical of a 40 footer. "Panchito" has ended her first charter season, and is in pristine condition. Through the guest use, all the little defects and failures, typical of a brand new boat, were detected and solved by the professionals of the management company boat yard facility. She is ready at the dock, in top efficiency and fully equipped to take the sea to any destination..compeltely hassle free!

Diego Cerasi

SPECIFICATIONS

| | | | |
|---------------------|---------------------------------|----------------|------------------------|
| Dimensions | 12.35 x 4.20 x 2.10 (m) | Builder | Dufour Yachts |
| Built | 2018 | Cabins | 3 |
| Material | GRP | Berths | |
| Engine(s) | 1 x vovlo penta D2-55 SD diesel | Hp/Kw | 55.00 (hp), 40.00 (kw) |
| Asking price | sold (VAT) | Lying | contact Palma |

CONTACT

| | | | |
|---------------------|--|------------------|------------------|
| Sales office | De Valk Palma | Telephone | +34 971 40 29 11 |
| Address | Port. Cala Nova, Avda. Joan Miro, 327 07015 Palma de Mallorca ES | E-mail | palma@devalk.nl |

DISCLAIMER

These particulars are given in good faith as supplied but cannot be guaranteed.



DUFOUR 412 GRAND LARGE

GENERAL

| | |
|-------------------------|-----------------------------|
| Model | DUFOUR 412 GRAND LARGE |
| Type | sailing yacht |
| LOA (m) | 12,35 |
| Beam (m) | 4,20 |
| Draft (m) | 2,10 |
| Year built | 2018 |
| Builder | Dufour Yachts |
| Country | France |
| Designer | Umberto Felci |
| Displacement (t) | 8,94 |
| CE norm | A |
| Hull material | GRP |
| Cockpit deck finish | teak Teak |
| Fuel tank (litre) | 200 |
| Freshwater tank (litre) | 380 |
| Wheel steering | cable steering Twins wheels |

ACCOMMODATION

| | |
|-----------------------|---------------|
| Cabins | 3 |
| Galley | yes |
| Cooker | calor gas |
| Oven | yes |
| Fridge | yes |
| Hot water system | 220V + engine |
| Water pressure system | electrical |
| Owners cabin | double bed |
| Bathroom | en suite |
| Toilet | en suite |
| Toilet system | electric |
| Shower | en suite |



DUFOUR 412 GRAND LARGE

| | |
|---------------|------------|
| Guest cabin 1 | double bed |
| Bathroom | shared |
| Toilet | shared |
| Toilet system | electric |
| Shower | shared |
| Guest cabin 2 | double bed |
| Bathroom | shared |
| Toilet | shared |
| Toilet system | electric |
| Shower | shared |

MACHINERY

| | |
|-----------------------|---------------------------|
| No of engines | 1 |
| Make | Vovlo penta |
| Type | D2-55 SD |
| HP | 55,00 |
| kW | 40,00 |
| Fuel | diesel |
| Engine cooling system | freshwater heat exchanger |
| Drive | sail-drive |
| Bowthruster | water jet Jet Thruster |
| Manual bilge pump | yes |
| Electric bilge pump | yes |
| Battery charger | yes |
| Inverter | yes |
| Shorepower | with cable |

NAVIGATION

| | |
|-------------------|-----|
| Compass | yes |
| Depth sounder/log | yes |
| Windset | yes |



DUFOUR 412 GRAND LARGE

| | |
|------------------------|-----|
| Repeater | yes |
| VHF | yes |
| Autopilot | yes |
| Rudder angle indicator | yes |
| Plotter/GPS | yes |

EQUIPMENT

| | |
|-------------------|-----------------|
| Sprayhood | yes |
| Bimini | yes |
| Sun awning | yes |
| Cockpit cushions | yes |
| Cockpit table | yes |
| Bathing platform | yes |
| Boarding ladder | stainless steel |
| Gangway | yes |
| Deck shower | yes |
| Anchor | yes |
| Anchor chain | 50 m |
| Windlass | electrical |
| Outboard support | yes |
| Radar reflector | yes |
| Fenders | yes |
| Mooring lines | yes |
| Radio-cd player | yes |
| Cockpit speakers | yes |
| Speakers in salon | yes |
| Clock - barometer | yes |
| Fire extinguisher | yes |

RIGGING

| | |
|---------|--------------------------------|
| Rigging | fractional with backstays 9/10 |
|---------|--------------------------------|



DUFOUR 412 GRAND LARGE

| | |
|-------------------------|------------------------|
| Fully battened mainsail | yes |
| Genoa furler | yes |
| Reefing System | quick-one-line-reefing |



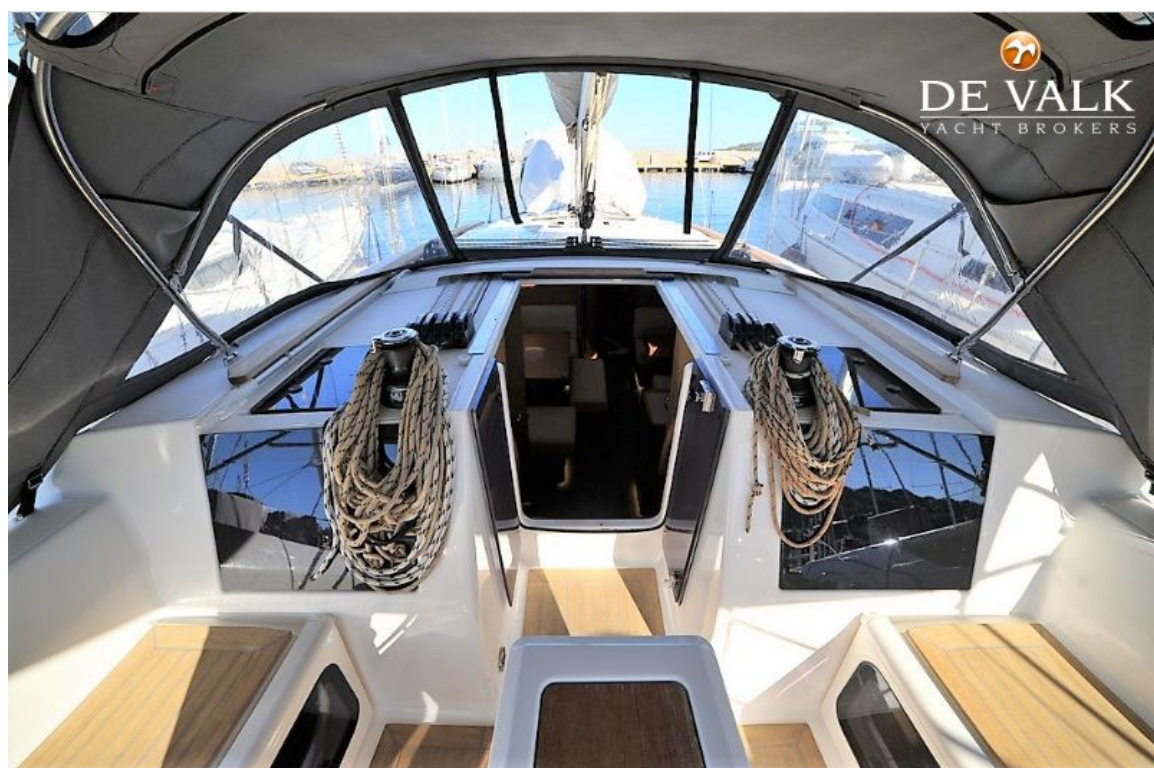
DUFOUR 412 GRAND LARGE



DUFOUR 412 GRAND LARGE



DUFOUR 412 GRAND LARGE



DUFOUR 412 GRAND LARGE



DUFOUR 412 GRAND LARGE



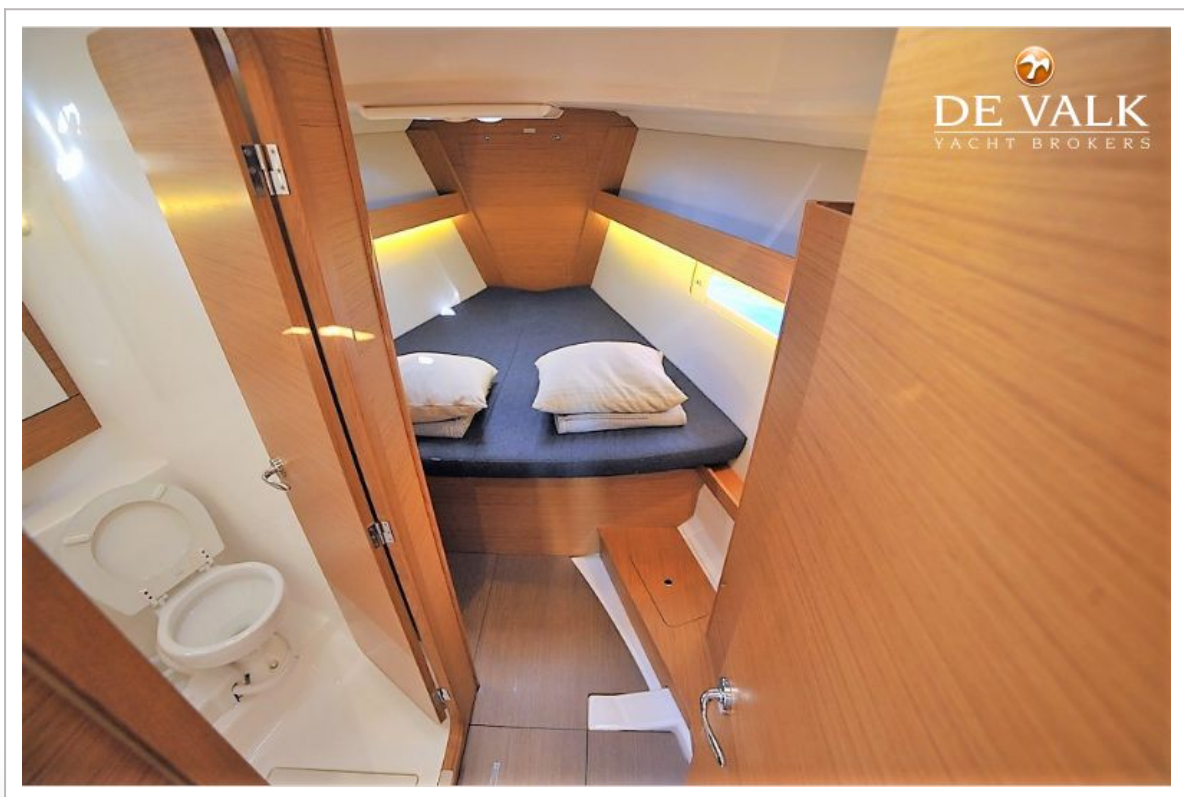
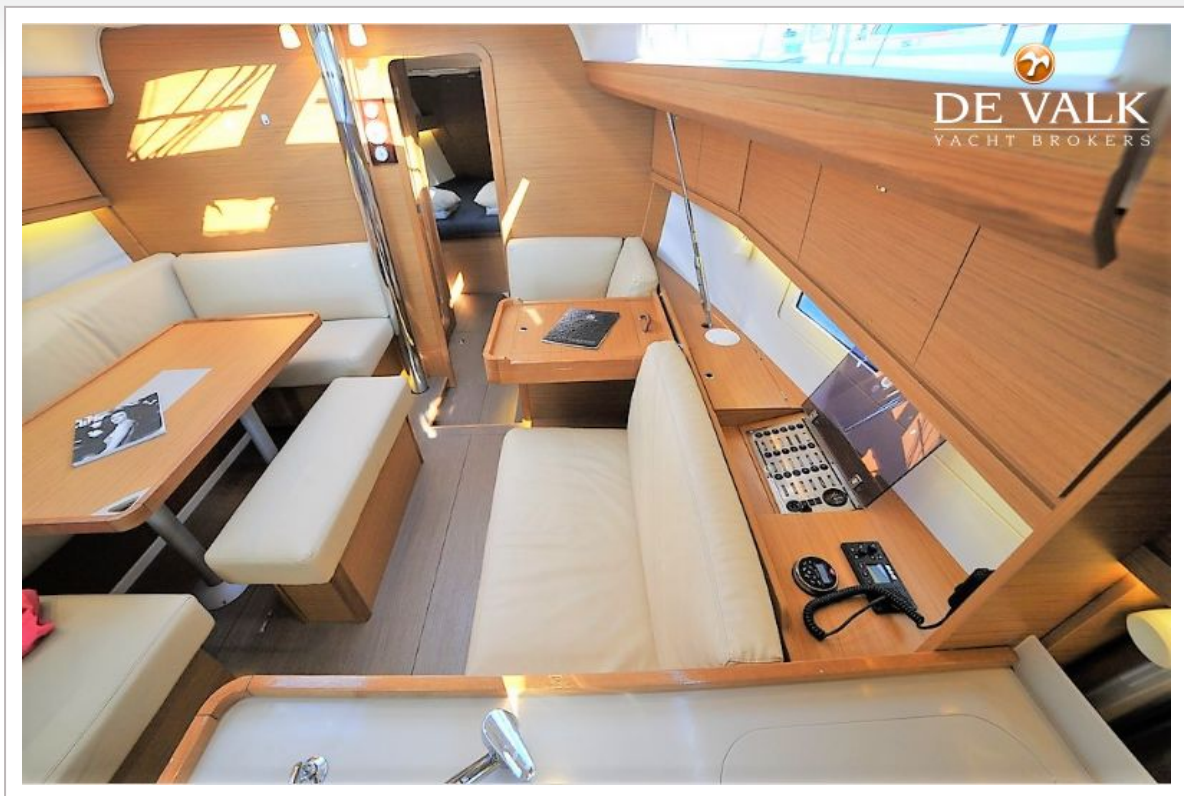
DUFOUR 412 GRAND LARGE



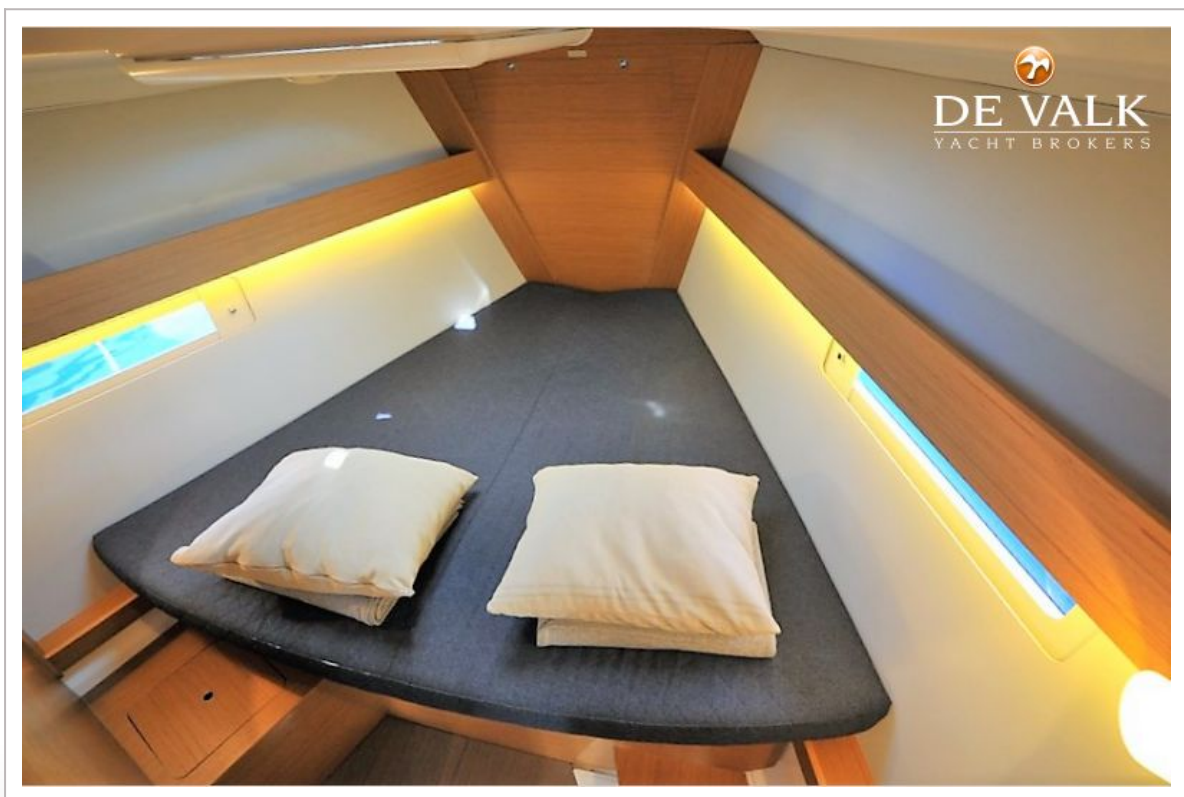
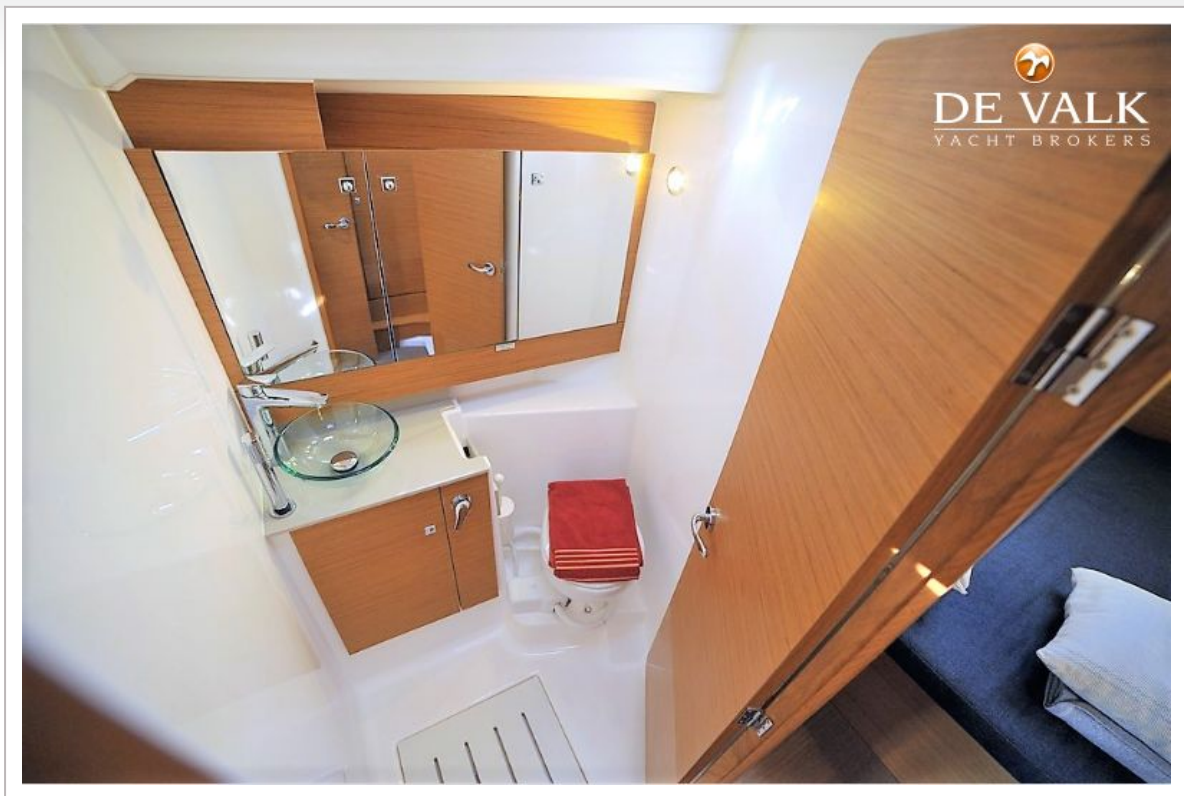
DUFOUR 412 GRAND LARGE



DUFOUR 412 GRAND LARGE



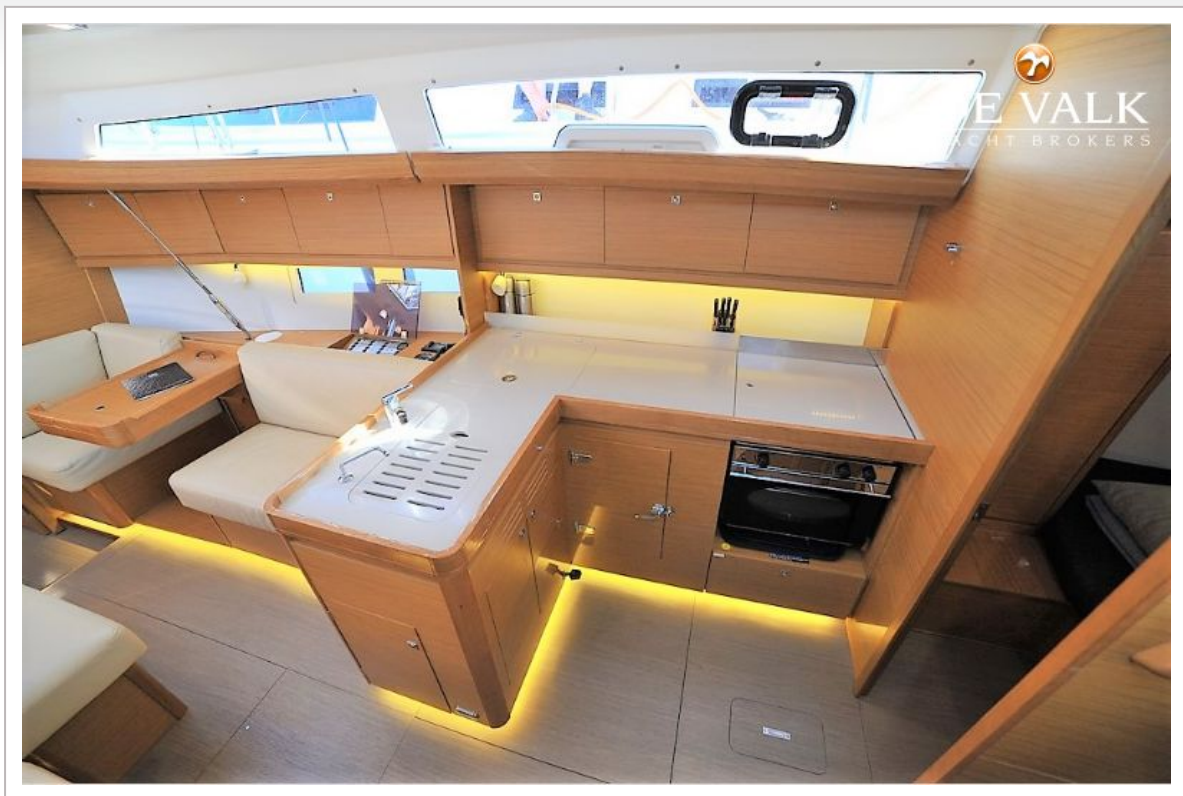
DUFOUR 412 GRAND LARGE



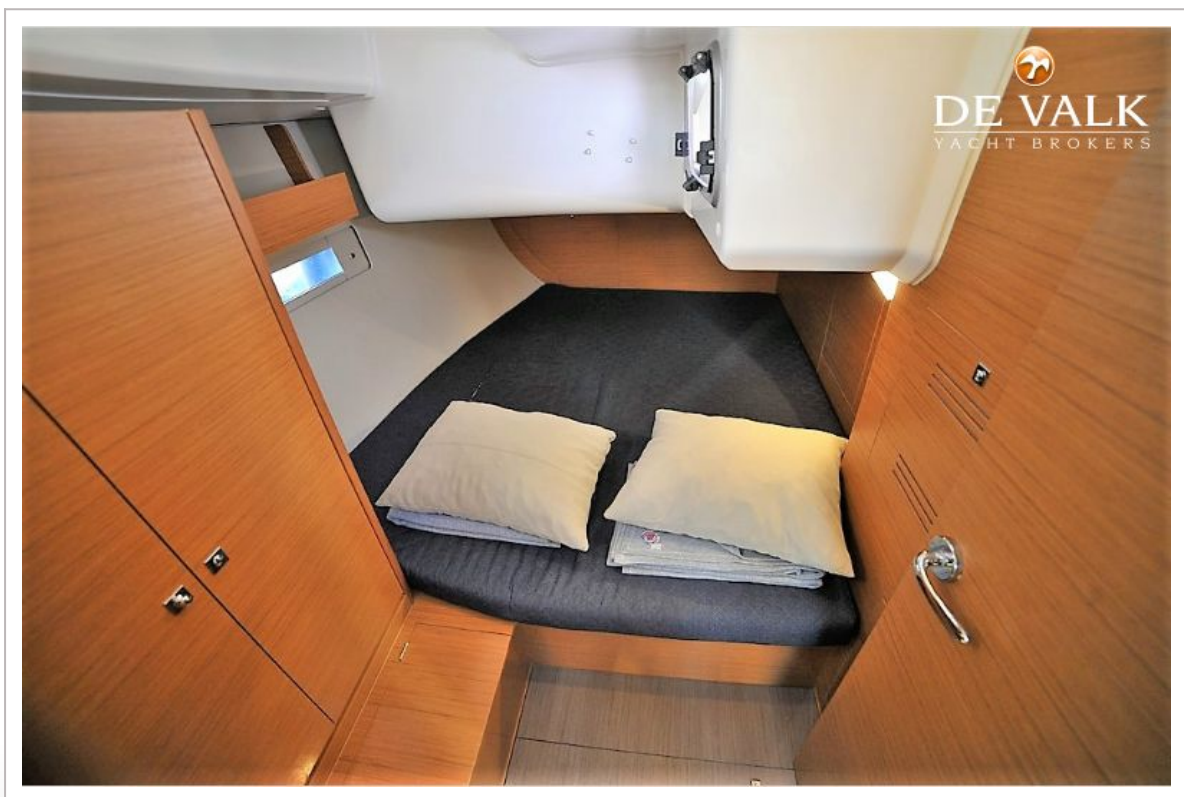
DUFOUR 412 GRAND LARGE



DUFOUR 412 GRAND LARGE



DUFOUR 412 GRAND LARGE



DUFOUR 412 GRAND LARGE

