



DE VALK
YACHT BROKERS



HALLBERG RASSY 45



DE VALK
YACHT BROKERS

HALLBERG RASSY 45

BROKER'S COMMENTS

A very well cared for example of this popular cruiser. Professionally maintained. One owner from new, wintered ashore every year, Teak deck replaced, 2014. Rigging, 2015. This is a safe, easily handled design from German Frers. A must see.

Paul Galle

SPECIFICATIONS

Dimensions	14.12 x 4.32 x 2.80 (m)	Builder	Hallberg Rassy
Built	1993	Cabins	3
Material	GRP	Berths	7
Engine(s)	1 x Volvo Penta diesel	Hp/Kw	94.00 (hp), 69.00 (kw)
Asking price	sold (VAT)	Lying	at sales office

CONTACT

Sales office	De Valk Palma	Telephone	+34 971 40 29 11
Address	Port. Cala Nova, Avda. Joan Miro, 327 07015 Palma de Mallorca ES	E-mail	palma@devalk.nl

DISCLAIMER

These particulars are given in good faith as supplied but cannot be guaranteed.



HALLBERG RASSY 45

GENERAL

Model	HALLBERG RASSY 45
Type	sailing yacht
LOA (m)	14,12
Beam (m)	4,32
Draft (m)	2,80
Air draft (m)	21,00
Year built	1993
Builder	Hallberg Rassy
Country	Sweden
Designer	German Frers
Gross tonnage	18
CE norm	A
Hull material	GRP
Hull colour	White
Deck finish	Teak renewed 2013
Superstructure deck finish	
Antifouling (year)	2017 Wintered ashore each year
Fuel tank (litre)	600
Freshwater tank (litre)	1000
Level indicator (blackwater)	yes
Outside helm position	

ACCOMMODATION

Cabins	3
Berths	7
Interior	Cherry wood finish
Saloon	yes
Headroom saloon (m)	2
Heating	
Air-conditioning	



HALLBERG RASSY 45

Chart table	yes
Aft Cabin	yes
Dinette to convert into berth	yes
Sliding door to cockpit	yes
Countertop	
Sink	
Cooker	
Oven	yes
Gas alarm	yes
Microwave	yes
Fridge	yes
Freezer	yes
Hot water system	
Water pressure system	
Manual and/or foot pump	yes
Owners cabin	
Bed length (m)	Double and single berth
Wardrobe	drawers
Bathroom	
Toilet	Force 10
Wash basin	
Guest cabin 1	2 bunks
Wardrobe	drawers
Bathroom	
Toilet	
Wash basin	
Shower	
Guest cabin 2	2 bunks
Wardrobe	drawers

MACHINERY



HALLBERG RASSY 45

No of engines	1
Make	Volvo Penta
HP	94,00
kW	69,00
Fuel	diesel
Year installed	1993
Maximum speed (kn)	8
Cruising speed (kn)	7
Bowthruster	
Propeller type	
Propeller blades	3 blades folding
Shaft lubrication	
Manual bilge pump	yes
Electric bilge pump	yes
Bilge alarm	yes
Generator	
Running hours generator	1550
Start battery	60kw
Service battery	250kw
Bowthruster battery	yes
Battery monitor	yes
Battery charger	yes
Inverter	yes

NAVIGATION

VHF	yes
VHF handheld	yes
Autopilot	yes
Radar	yes
GPS	yes
Plotter	yes



Plotter/GPS	yes
Navtex	yes
PC connection	yes
EPIRB	yes

EQUIPMENT

Fixed windscreen	yes
Sprayhood with grab rail	yes
Cockpit cover	yes
Bimini	yes
Sun awning	yes
Winter cover	yes
Cockpit cushions	yes
Cockpit table	yes
Bathing platform	yes
Boarding ladder	steel
Bow ladder	yes
Gangway	yes
Deck shower	yes
Anchor	
Anchor chain	80m Stainless Steel
Windlass	
Dinghy	
Outboard	yes
Davits	
Life raft	
Life raft (pers)	6
Last life raft survey	2017
Lifejackets	yes
Radar reflector	yes
Fenders	yes



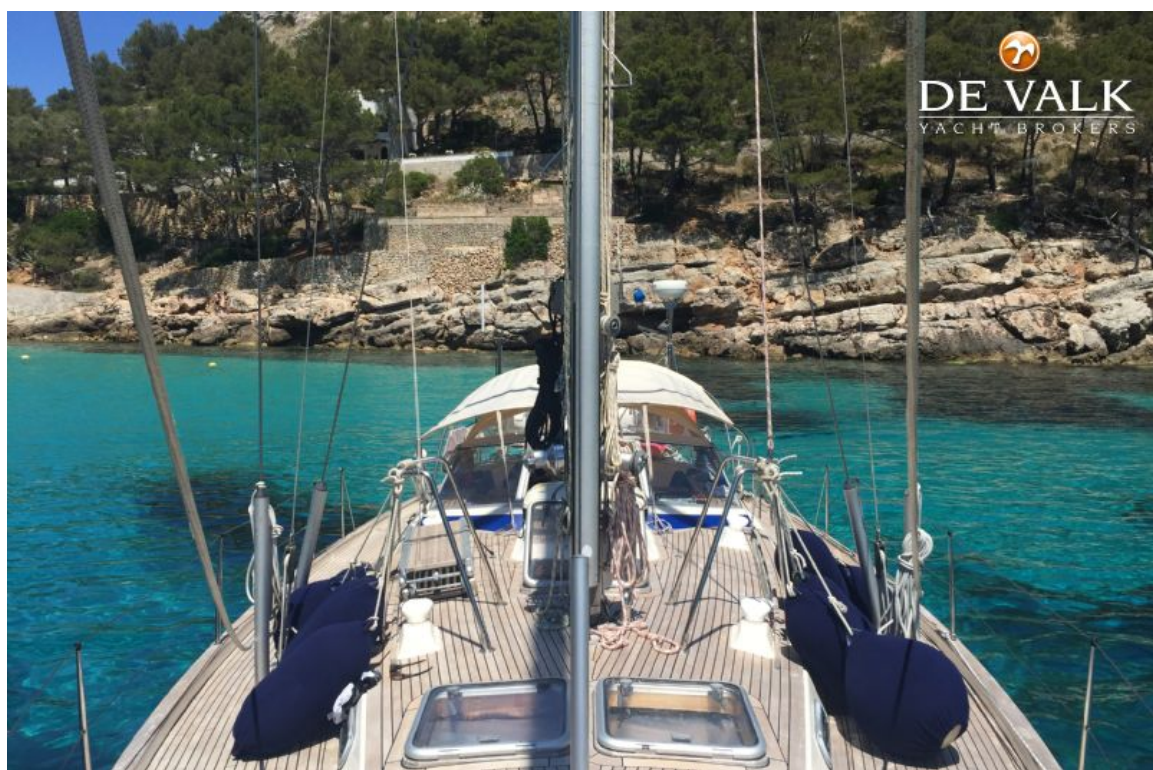
Mooring lines	yes
Spare parts	yes
Radio-cd player	yes
Cockpit speakers	yes
Fire extinguisher	yes

RIGGING

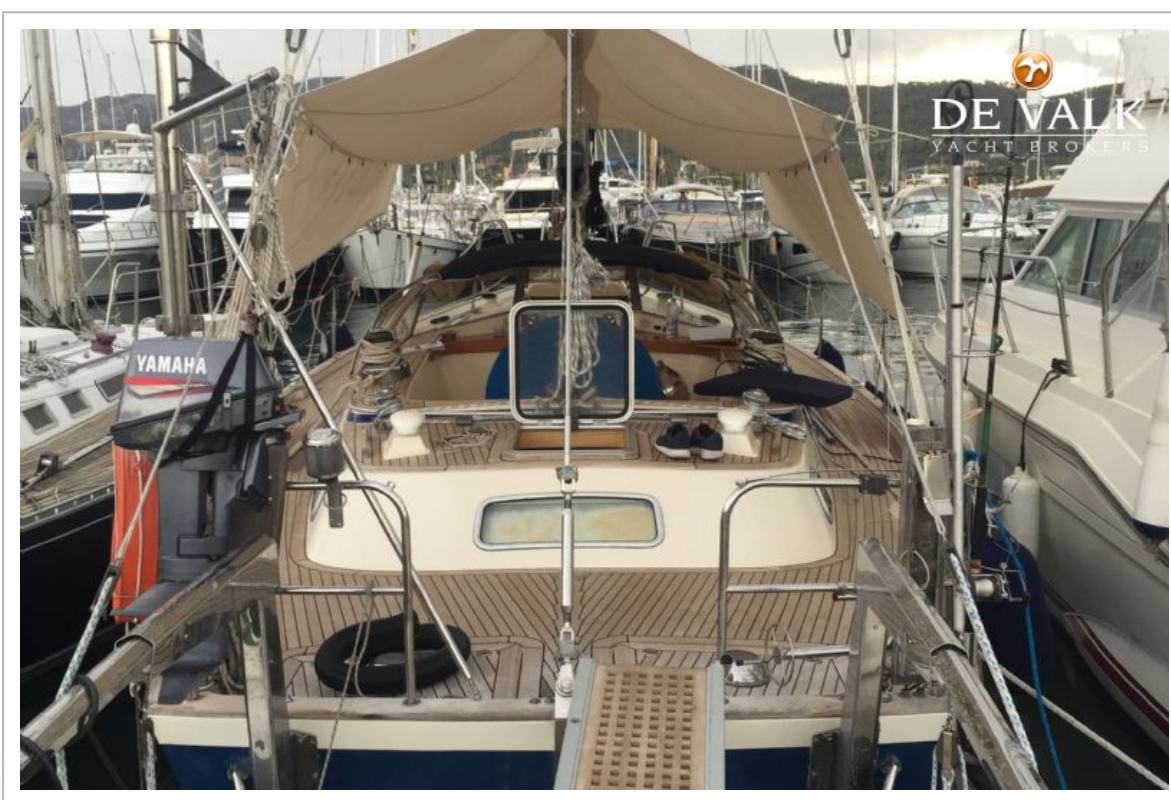
Mainsail	yes
Genoa	yes
Spinnaker	yes
Stormjib	yes
Self tacking jib installation	yes
Halyard winches	yes
Spinnaker winch	yes
Spi-pole	



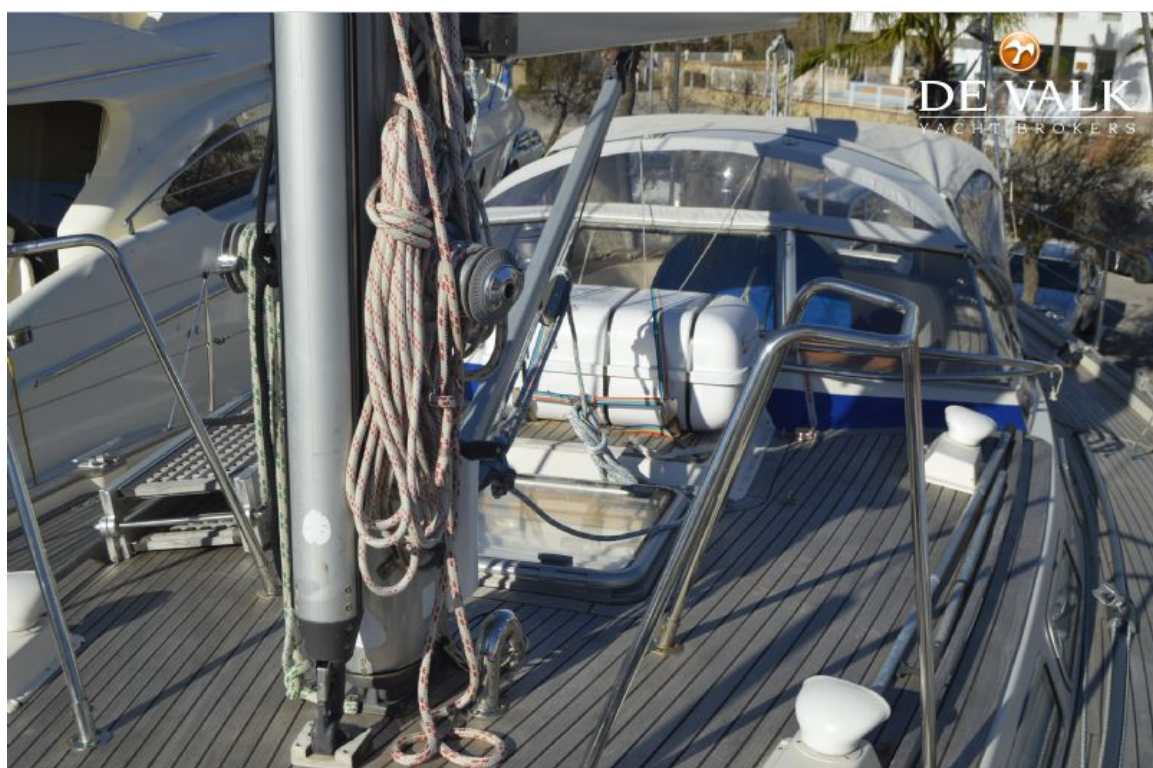
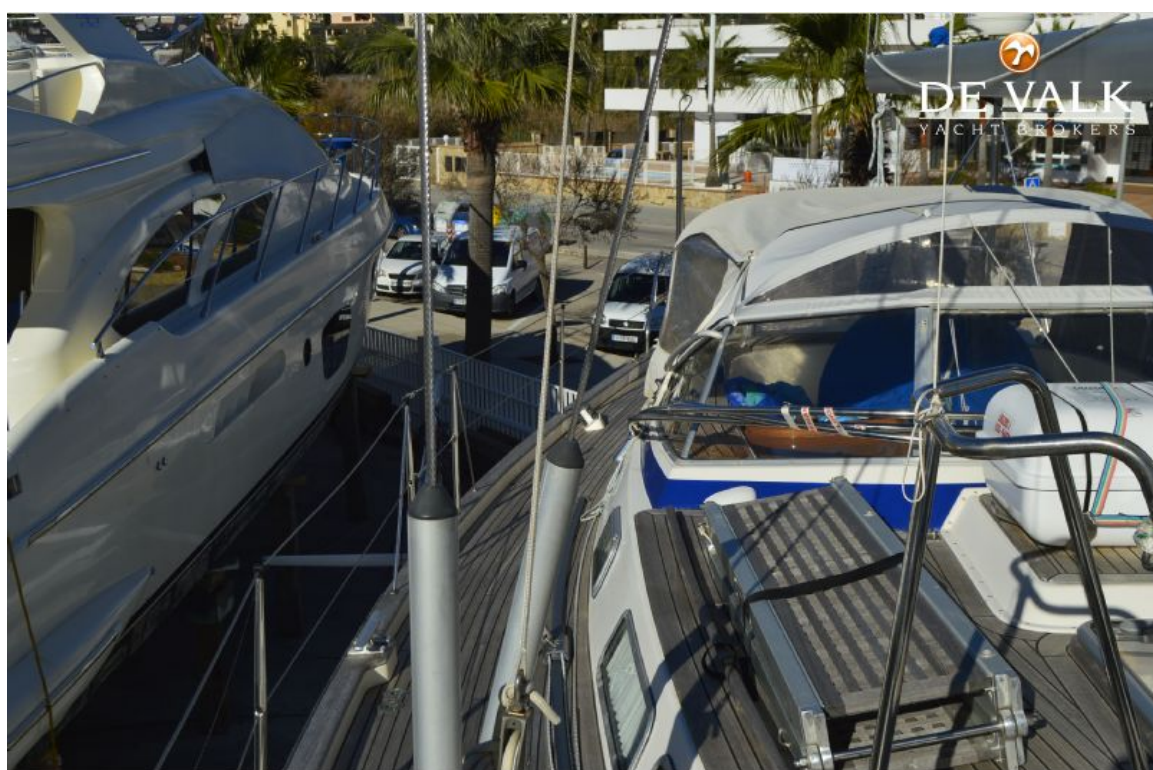
HALLBERG RASSY 45



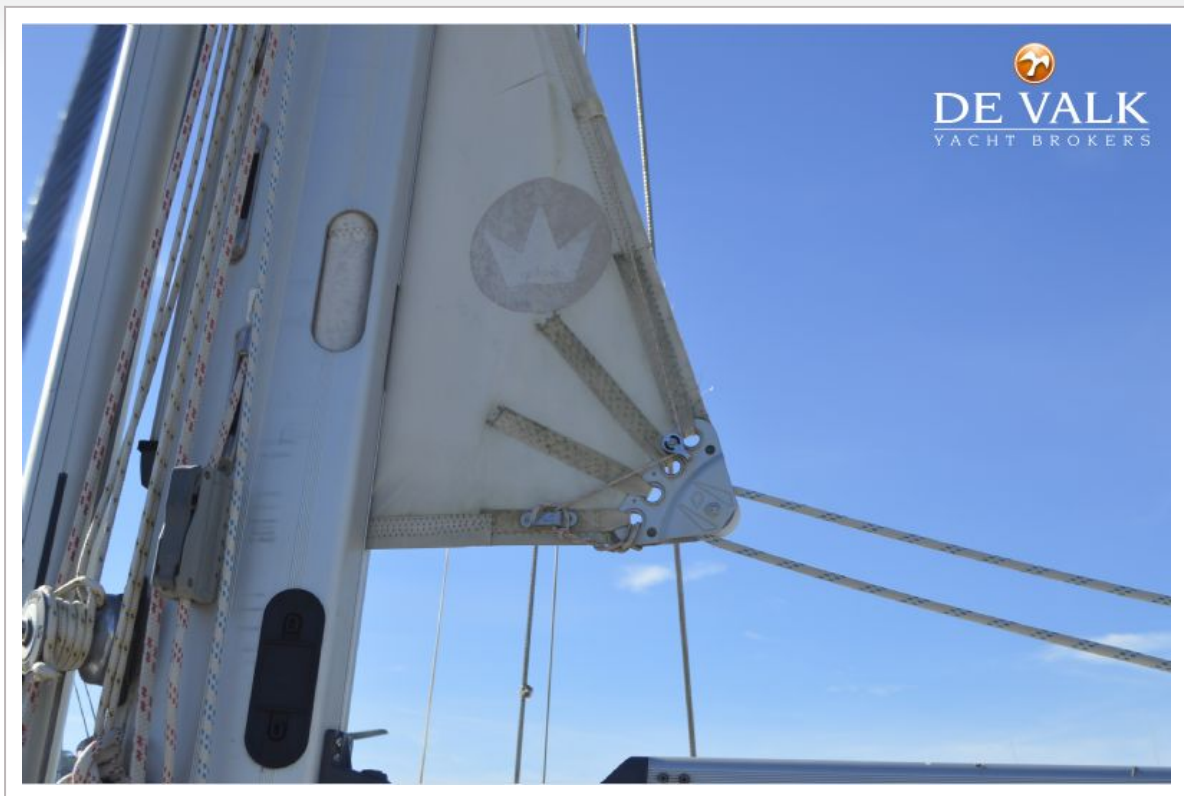
HALLBERG RASSY 45



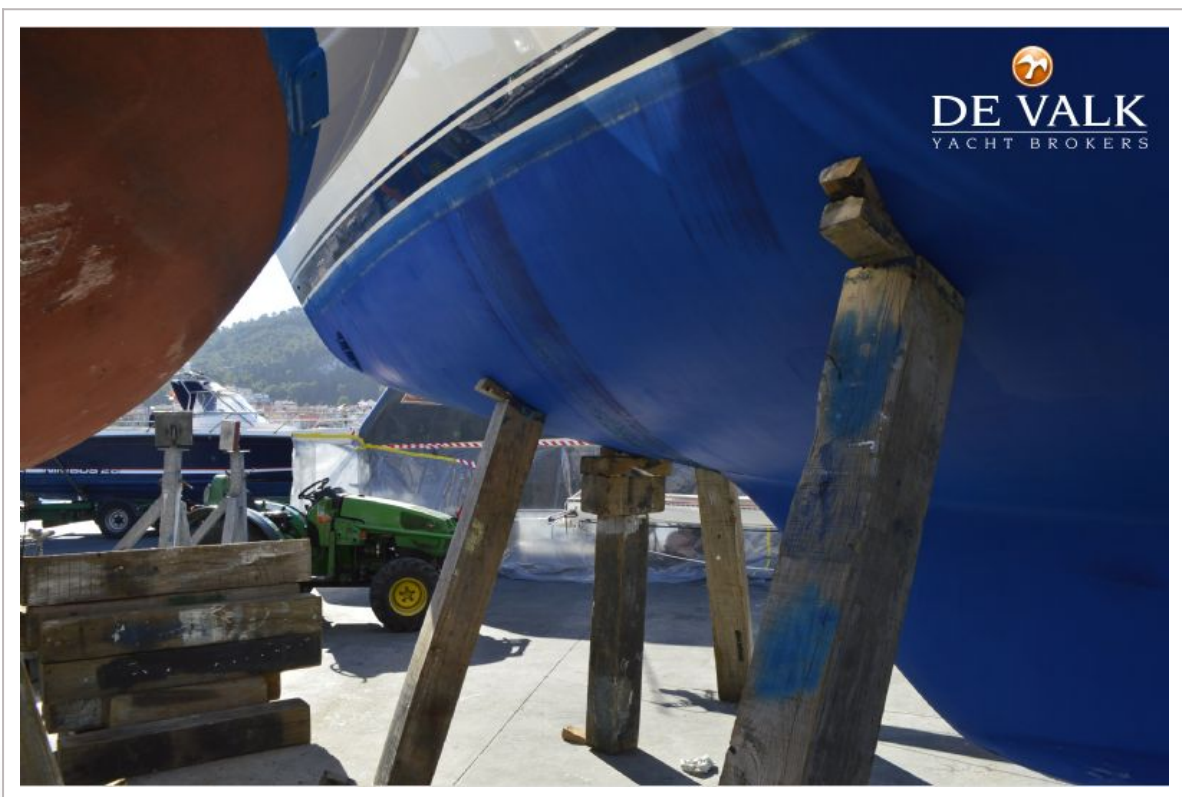
HALLBERG RASSY 45



HALLBERG RASSY 45



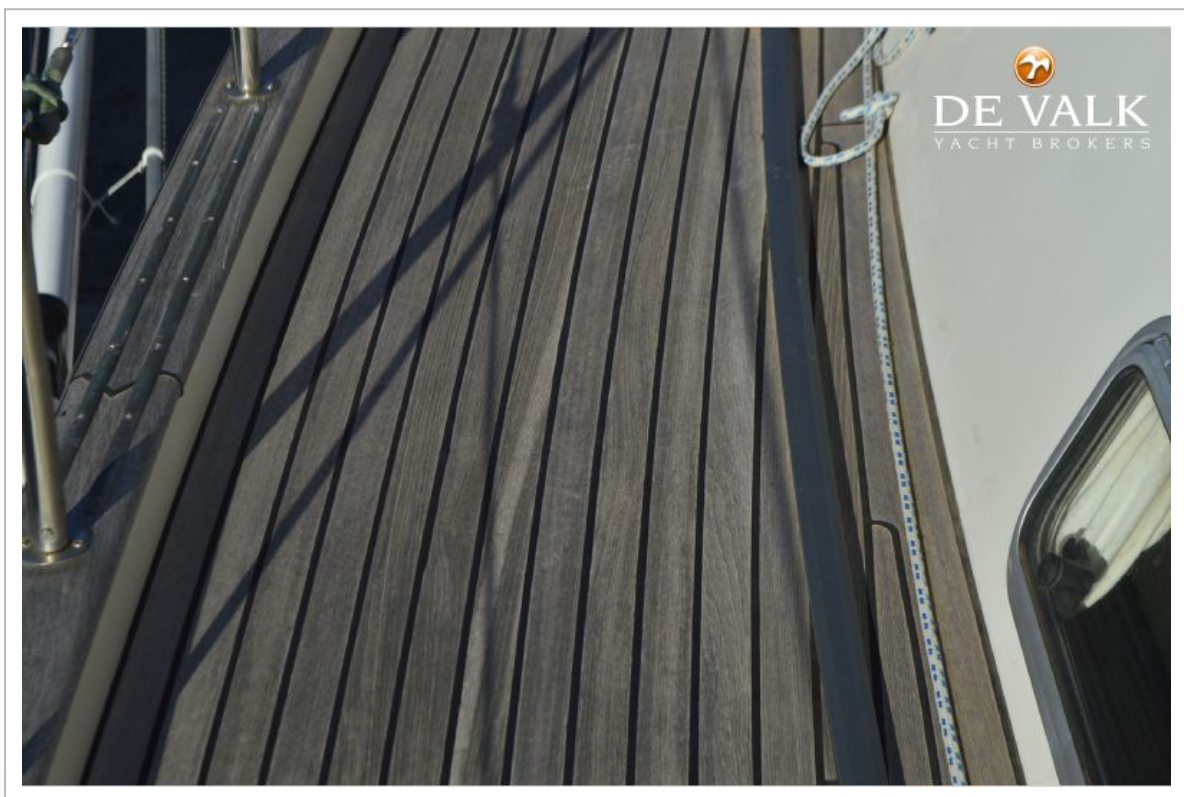
HALLBERG RASSY 45



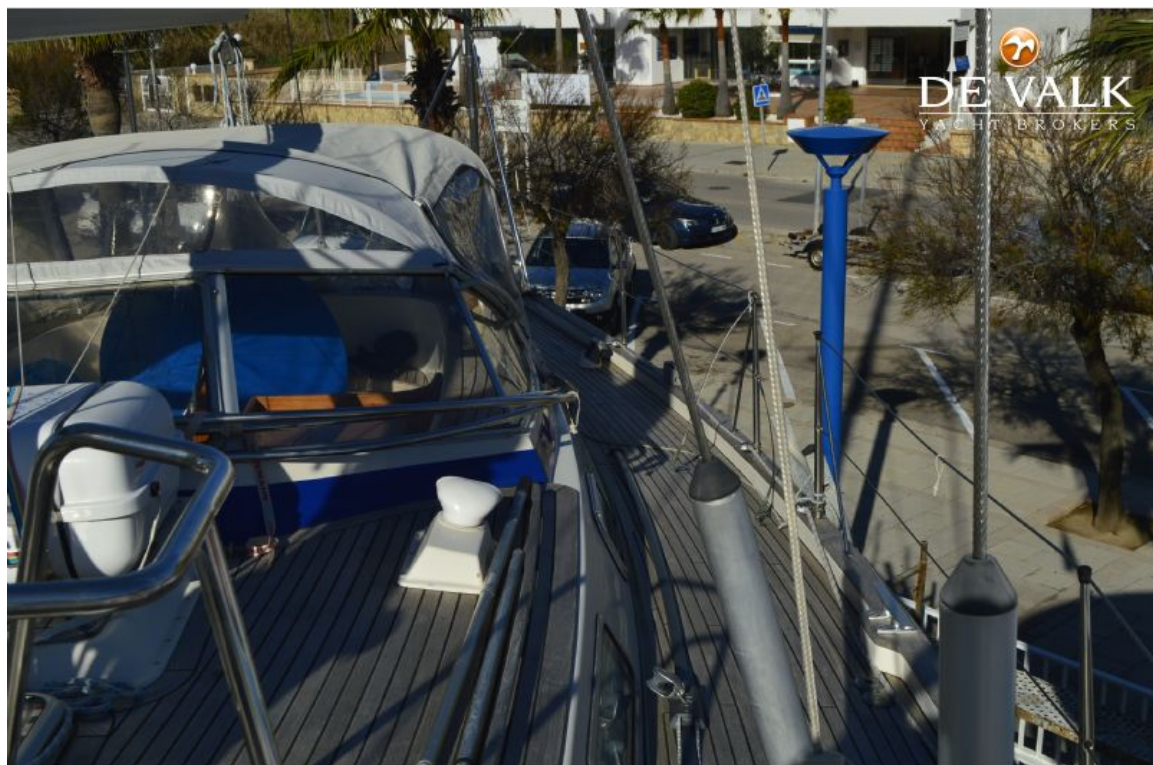
HALLBERG RASSY 45



HALLBERG RASSY 45



HALLBERG RASSY 45



HALLBERG RASSY 45



HALLBERG RASSY 45



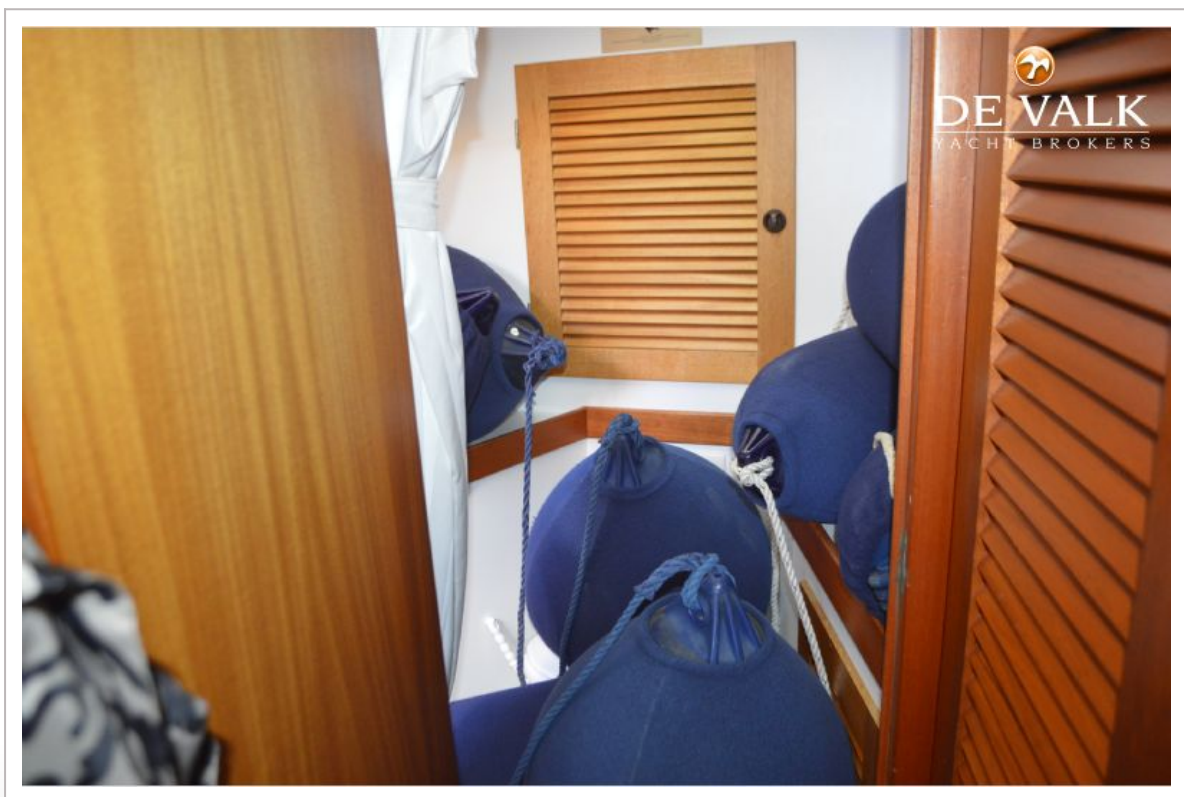
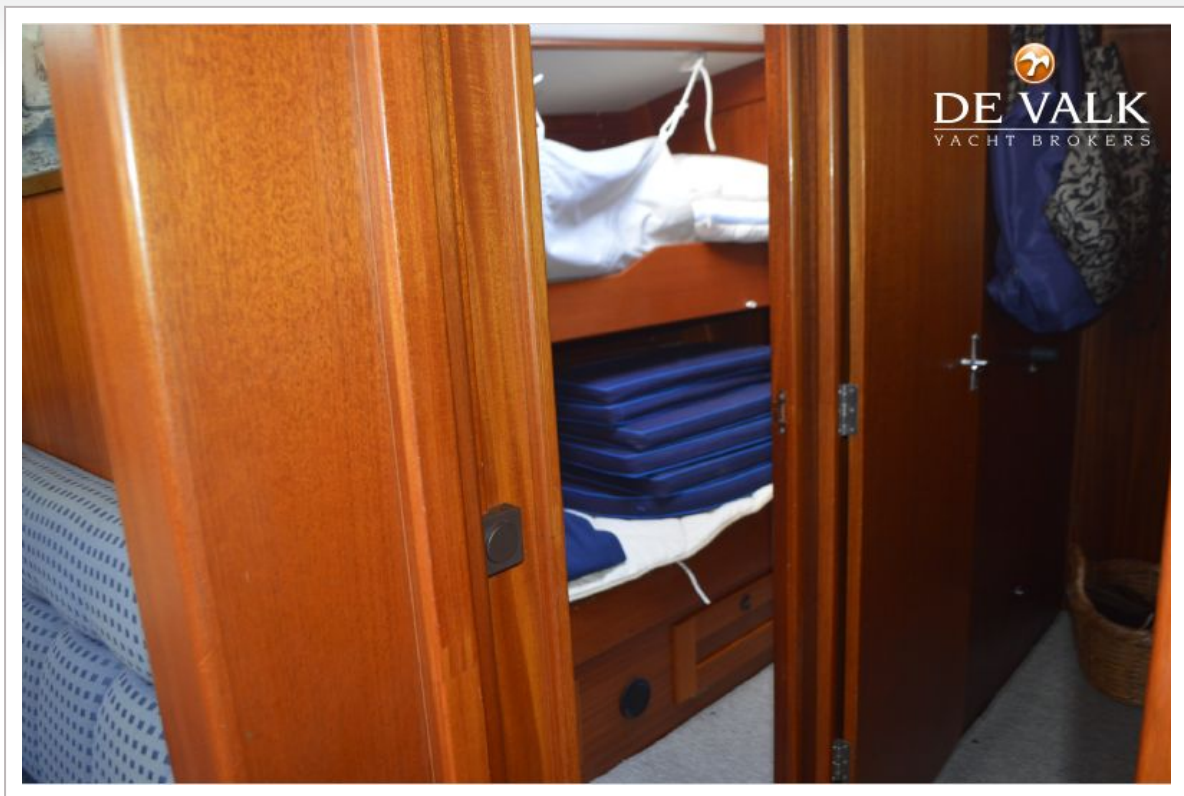
HALLBERG RASSY 45



HALLBERG RASSY 45



HALLBERG RASSY 45



HALLBERG RASSY 45

