



DE VALK



## JEANNEAU SUN ODYSSEY 439



**DE VALK**  
YACHT BROKERS

# JEANNEAU SUN ODYSSEY 439

## BROKER'S COMMENTS

This Jeanneau Sun Odyssey 439 is designed to sail well, offer maximum space and comfort and fabulous looks. This more than 13 meter yacht offers a perfect balance between reliability, performance, easy handling and modernity, as well as maximizing space, light and comfort below decks. Always maintained by a well known professional charter company, she is in perfect condition. Fully equipped and well maintained to the higher standards. The Jeanneau Sun Odyssey 439 ready at the dock, to take the sea to discover new horizons

*Eric Lamers*

## SPECIFICATIONS

<b>Dimensions</b>	13.34 x 4.40 x 2.20 (m)	<b>Builder</b>	Jeanneau
<b>Built</b>	2012	<b>Cabins</b>	4
<b>Material</b>	GRP	<b>Berths</b>	8
<b>Engine(s)</b>	1 x Yanmar 4JH5-CE diesel	<b>Hp/Kw</b>	55.00 (hp), 40.42 (kw)
<b>Asking price</b>	sold (VAT )	<b>Lying</b>	elsewhere / Not at sales office

## CONTACT

<b>Sales office</b>	De Valk Palma	<b>Telephone</b>	+34 971 40 29 11
<b>Address</b>	Port. Cala Nova, Avda. Joan Miro, 327 07015 Palma de Mallorca ES	<b>E-mail</b>	palma@devalk.nl

## DISCLAIMER

These particulars are given in good faith as supplied but cannot be guaranteed.



## GENERAL

Model	JEANNEAU SUN ODYSSEY 439
Type	sailing yacht
LOA (m)	13,34
Beam (m)	4,40
Draft (m)	2,20
Headroom (m)	2,00
Year built	2012
Builder	Jeanneau
Country	France
Designer	Phillip Briand
Displacement (t)	9,8
CE norm	A
Hull material	GRP
Keel type	fin keel
Superstructure material	GRP
Deck material	GRP
Fuel tank (litre)	200
Level indicator (fuel tank)	yes
Freshwater tank (litre)	530
Blackwater tank (litre)	160
Level indicator (blackwater)	yes
Wheel steering	Double
Emergency tiller	yes

## ACCOMMODATION

Cabins	4
Berths	8
Headroom saloon (m)	2
Air-conditioning	
Navigation center	yes



Chart table	yes
Dinette to convert into berth	yes
Galley	yes
Sink	
Oven	yes
Fridge	yes
Hot water system	
Water pressure system	
Toilet	2
Wash basin	2
Shower	2
Wardrobe	drawers and shelves

## MACHINERY

No of engines	1
Make	Yanmar
Type	4JH5-CE
HP	55
kW	40,42
Fuel	diesel
Year installed	2012
Saildrive seal	yes
Engine controls	
Engine controls	
Bowthruster	
Manual bilge pump	yes
Electric bilge pump	yes
Start battery	yes
Service battery	yes
Windlass battery	yes
Battery monitor	yes



Battery charger	yes
Shorepower	with cable

## NAVIGATION

Compass	yes
Electric compass	yes
Depth sounder	yes
Log	yes
Windset	yes
VHF	yes
Autopilot	yes
Plotter/GPS	2 Simrad
Navigation lights	yes

## EQUIPMENT

Sprayhood	yes
Bimini	yes
Sun awning	yes
Bathing platform	yes
Boarding ladder	stainless steel
Gangway	yes
Deck shower	yes
Anchor	
Anchor chain	60 meter
Windlass	electrical
Sea railing	
Life raft	
Fenders	yes
Mooring lines	yes
Radio-cd player	yes
Cockpit speakers	yes



Speakers in salon	yes
Fire extinguisher	yes

## RIGGING

Standing rigging	wire
Material mast	aluminium
Stoway mast	yes
Genoa	yes
Reefing System	
Boomvang	
Genoa sheetwinches	yes
Halyard winches	yes



# JEANNEAU SUN ODYSSEY 439



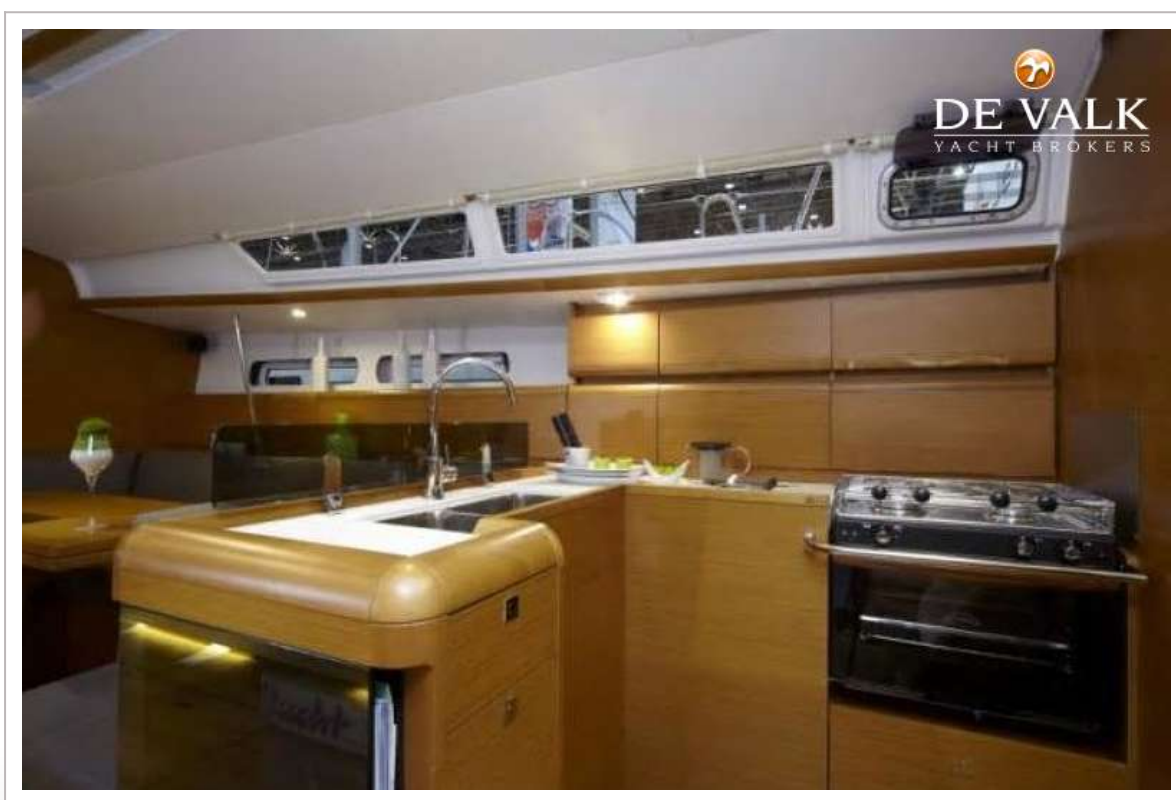


# JEANNEAU SUN ODYSSEY 439





# JEANNEAU SUN ODYSSEY 439



# JEANNEAU SUN ODYSSEY 439

