



DE VALK
YACHT BROKERS

GRAND BANKS 42 CLASSIC



DE VALK
YACHT BROKERS

GRAND BANKS 42 CLASSIC

BROKER'S COMMENTS

Don't miss out on this impressive Grand Banks Classic 42 from 1971. After a comprehensive refit in 2024, she will be back in front of you with a completely new look. The Grand Banks 42 embodies classic elegance and seaworthiness. With her traditional trawler design and high-quality craftsmanship, a powerful engine and an impressive range, she is ideal for long sea voyages. The excellent manoeuvrability and stable handling make every trip a pleasure. If you are looking for an exceptional yacht that will give you years of pleasure, then the Grand Banks 42 is the perfect choice.

Oliver Stehula

SPECIFICATIONS

Dimensions	13.00 x 4.00 x 1.60 (m)	Builder	American Marine
Built	1971	Cabins	2
Material	Mahogany	Berths	6
Engine(s)	2 x Ford 2714 diesel	Hp/Kw	2 x 120.00 (hp), 88.20 (kw)
Asking price	€ 107.000 (VAT Exempt)	Lying	at sales office

CONTACT

Sales office	De Valk Palma	Telephone	+34 971 40 29 11
Address	Port. Cala Nova, Avda. Joan Miro, 327 07015 Palma de Mallorca ES	E-mail	palma@devalk.nl

DISCLAIMER

These particulars are given in good faith as supplied but cannot be guaranteed.



GRAND BANKS 42 CLASSIC

GENERAL

Model	GRAND BANKS 42 CLASSIC
Type	motor yacht
LOA (m)	13,00
Beam (m)	4,00
Draft (m)	1,60
Year built	1971
Builder	American Marine
Country	Hong Kong
Displacement (t)	16
CE norm	A
Hull material	mahogany
Hull shape	yes
Superstructure material	Plywood
Superstructure (mm)	13
Rubbing strake	yes
Deck material	Teak on Plywood
Deck finish	Teak
Superstructure deck finish	Non Slip
Antifouling (year)	05/2024
Window frame	WoodS/S track
Window material	Laminated
Flybridge	yes
Flybridge cockpit cover	New 2017
Flybridge suncover	yes
Mast can be lowered	yes
Steadying sail with mast	yes
Fuel tank (litre)	steel 2400
Fuel tank 2 (litre)	steel
Level indicator (fuel tank)	yes
Freshwater tank (litre)	2 x 417



GRAND BANKS 42 CLASSIC

Wheel steering	yes
Inside helm position	yes
Flybridge helm position	yes
Emergency tiller	yes
More info on paintwork	Awlgrip

ACCOMMODATION

Cabins	2
Berths	6
Floor	Parquet
Saloon	yes
Headroom saloon (m)	2
Aft Cabin	yes
Dinette	yes
Dinette to convert into berth	yes
Countertop	Formica
Sink	2 x S/S
Cooker	4 burner Vitro Neff
Oven	Electric
Fridge	yes
Freezer	yes
Hot water system	220V Saunier Duval
Water pressure system	yes
Kettle	yes
Crockery	yes
Owners cabin	Aft 2 berth
Toilet	yes
Toilet system	electric Electric
Wash basin	yes
Shower	yes
Bath tub	yes



GRAND BANKS 42 CLASSIC

Guest cabin 1	2 berth
Bed length (m)	yes
Wardrobe	drawers
Bathroom	yes
Toilet	yes
Toilet system	yes
Wash basin	yes
Shower	yes
Washing machine	Electrolux Perfect Care EWC1351

MACHINERY

No of engines	2
Make	Ford
Type	2714
HP	120
kW	88.20
Fuel	diesel
Year installed	1971
Maximum speed (kn)	10
Cruising speed (kn)	8
Consumption (l/hr)	20
Range (nm)	1000
Engine cooling system	freshwater heat exchanger
Engine controls	Mourse double lever
Gearbox	Borg Warner Velvet Drive
Propeller type	yes
Propeller blades	3
Propeller shaft material	Aquamet
Shaft lubrication	Waster
Manual bilge pump	Whale
Electric bilge pump	2 Auto Submersible



GRAND BANKS 42 CLASSIC

Electrical installation	220V/ 12V
Generator	Cummins Onan 11-MDKBN. / 11KW
Running hours generator	1300
Generator 2	Zeise Multipower MPW 5 / 5KW
Running hours generator 2	10400
Batteries	12 Volt
Start battery	Replaced in 09/2024
Service battery	yes
Battery charger	40 Amp
Shorepower	yes
Watermaker	yes

NAVIGATION

Compass	Cassiens
Compass on flybridge	B&G
Electric compass	yes
Depth sounder	B&G
Log	B&G
Windset	B&G
Repeater	yes
VHF	yes
Autopilot	Benmar 14
Plotter	Simrad
Electronis chart(s)	West Med
Radio receiver	Icom SSB
Transmitter	Icom SSB
EPIRB	yes
Searchlight	yes

EQUIPMENT

Bimini	yes
--------	-----



GRAND BANKS 42 CLASSIC

Cockpit cushions	yes
Cockpit table	yes
Cockpit chairs	yes
Bathing platform	yes
Boarding ladder	aluminum
Gangway	yes
Deck shower	yes
Anchor	20Kg Lewmar
Anchor chain	100 meter S?S 10 mm
Anchor 2	20 Kg Bruce
Anchor chain	100 meter galvanized 10 mm
Other ground tackle	2 Brittany Anchors
Windlass	Orvia 2000W
Deck wash	Salt and Sweet
Dinghy	yes
Davits	S/S
Davits controls	Manual
Deck crane	manual
Sea railing	Varnished teak in Brass stanchion
Grab rail (superstructure)	Teak
Railing side opening gates	yes
Life raft	Zodiac
Life raft (pers)	8
Last life raft survey	2016
Wiper	yes
Horn cover	yes
Radar reflector	yes
Fenders	yes
Mooring lines	yes
Tools	yes
TV	yes
Radio	yes



GRAND BANKS 42 CLASSIC

Cockpit speakers	yes
Speakers in salon	yes
Speakers in cabin	yes
Clock - barometer	yes
Fire extinguisher	5
Latest extinguisher survey	2016
Extra info	Dive compressor
Extra info	Engine spares

RIGGING

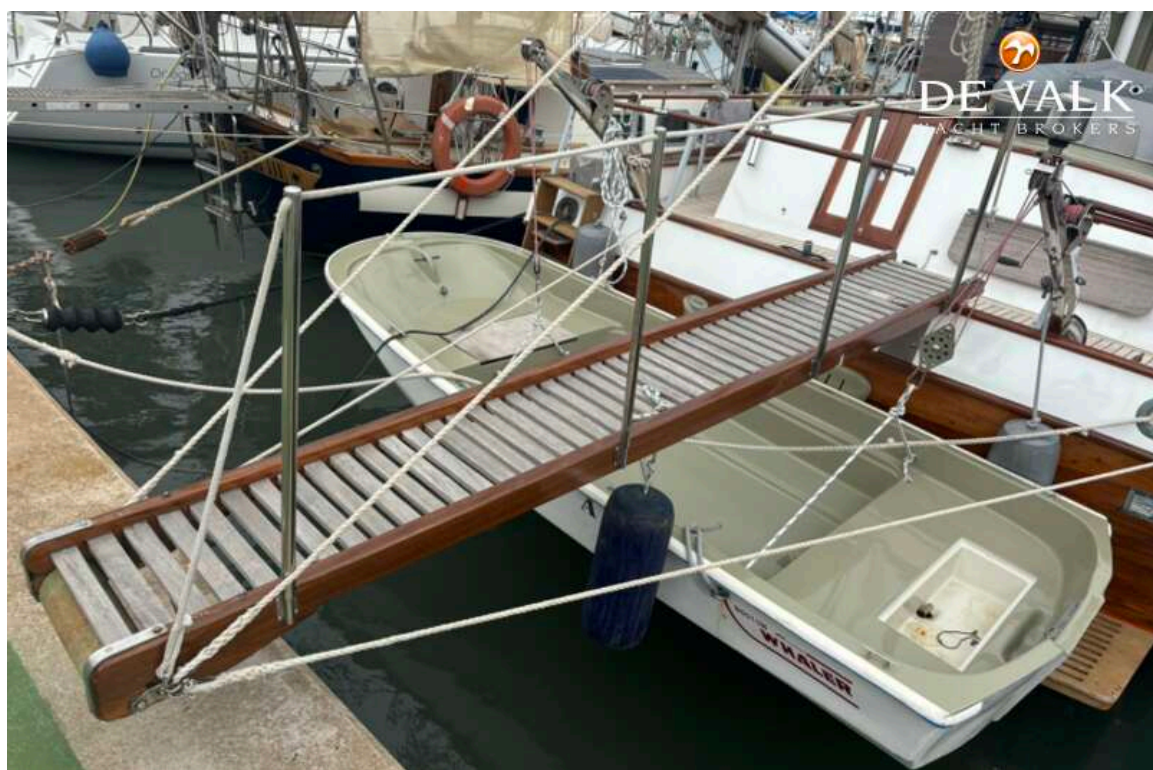
Staysail	yes
----------	-----



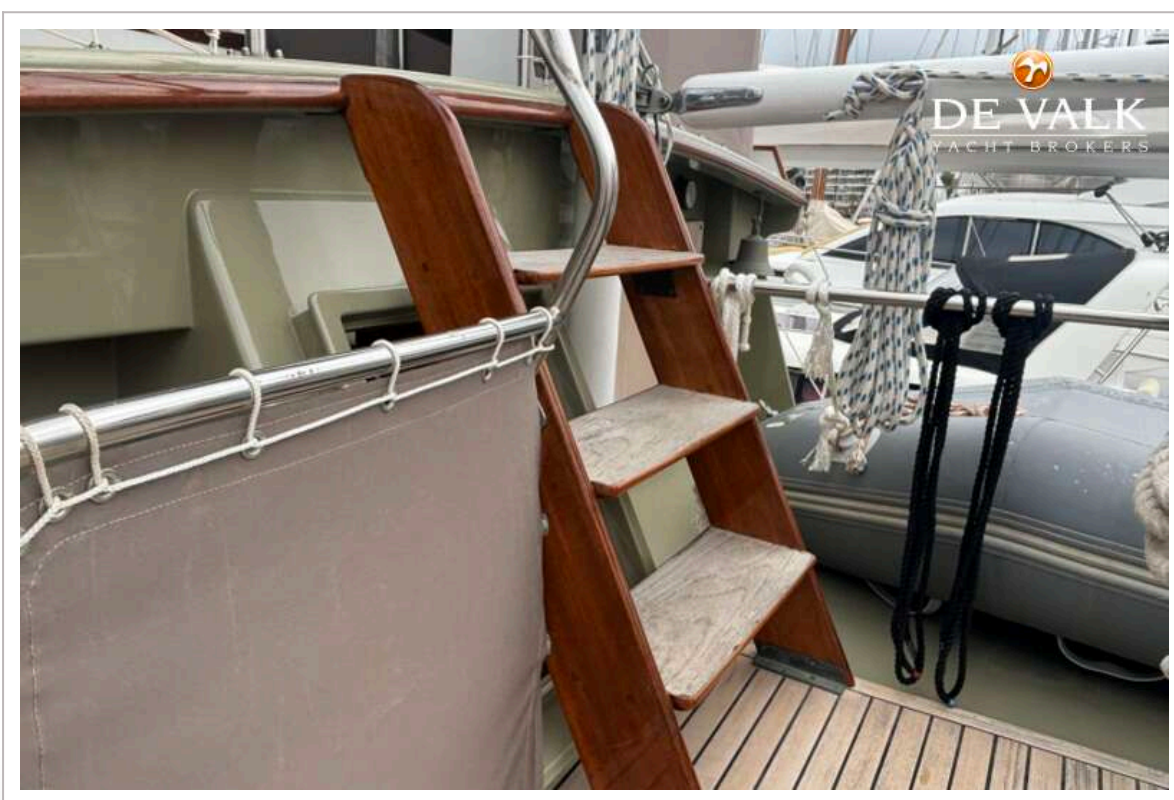
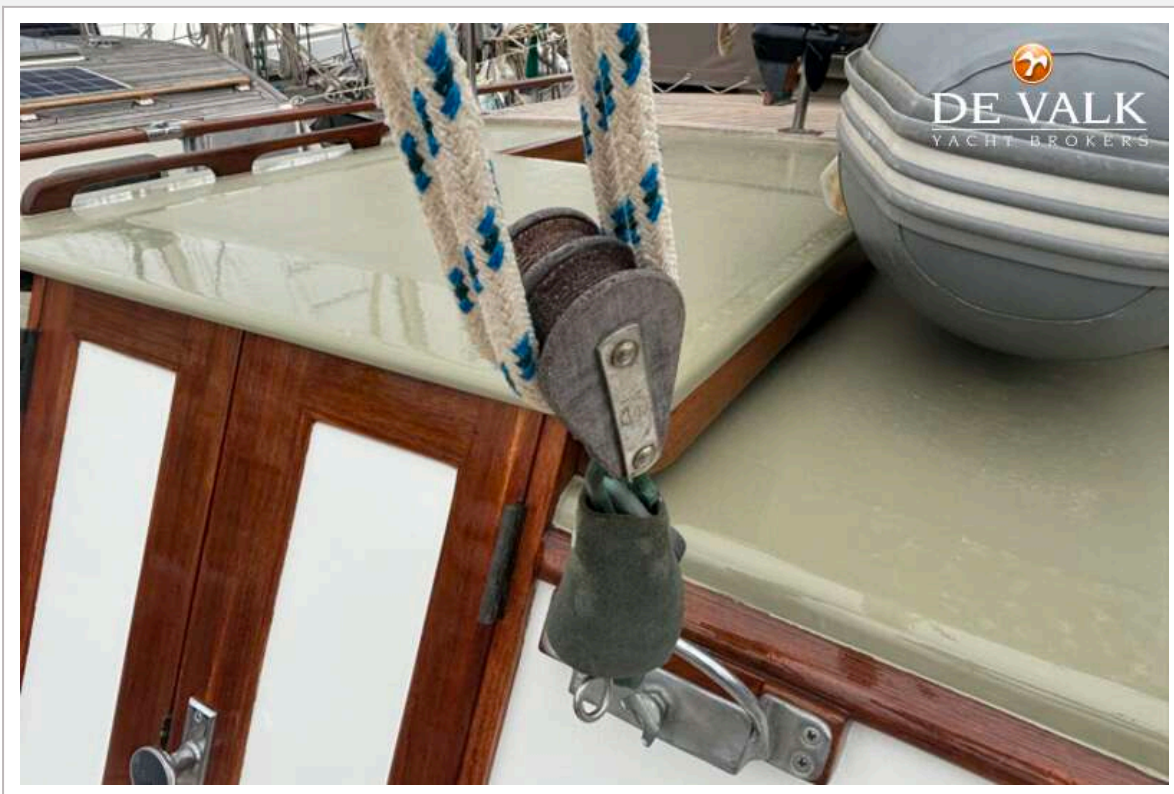
GRAND BANKS 42 CLASSIC



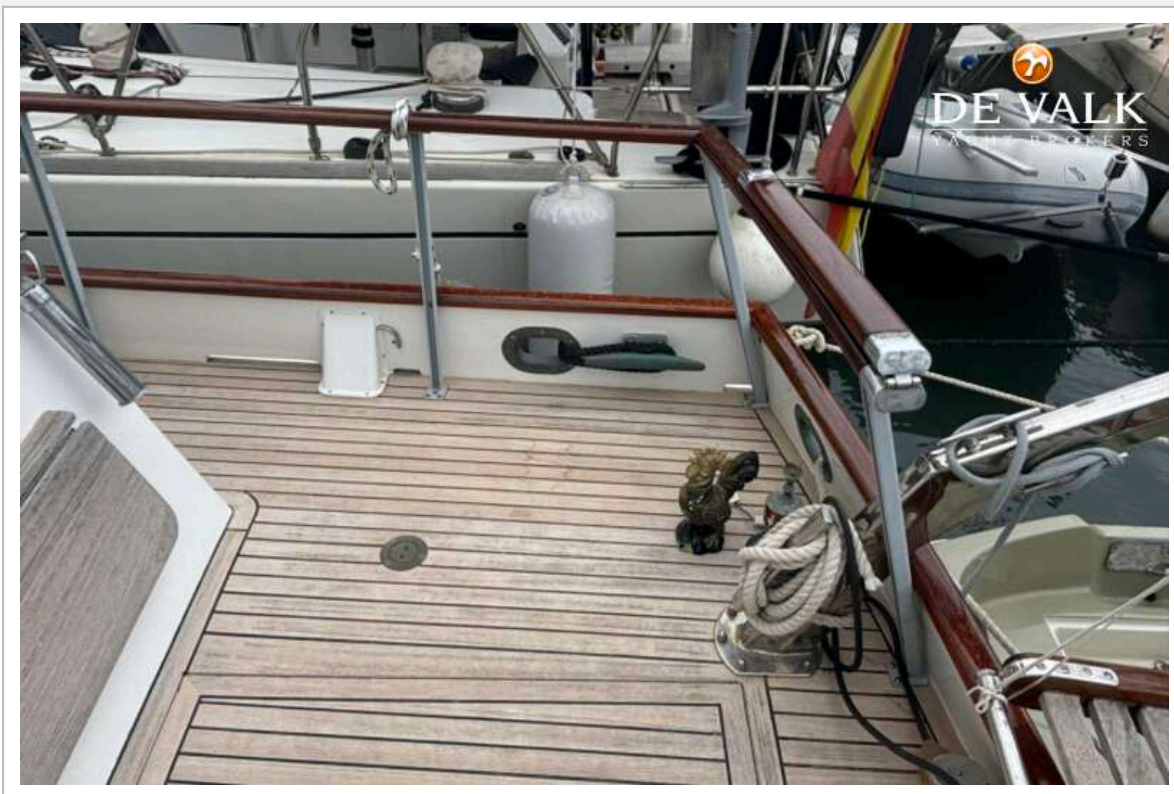
GRAND BANKS 42 CLASSIC



GRAND BANKS 42 CLASSIC



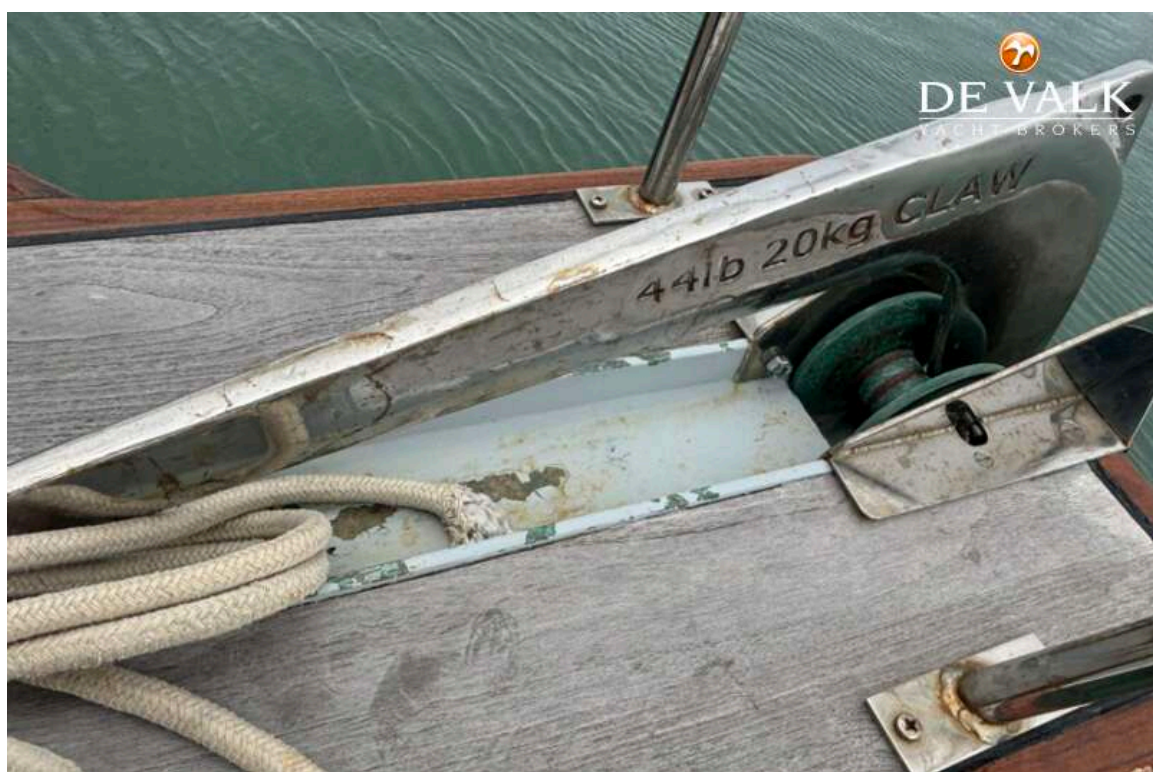
GRAND BANKS 42 CLASSIC



GRAND BANKS 42 CLASSIC



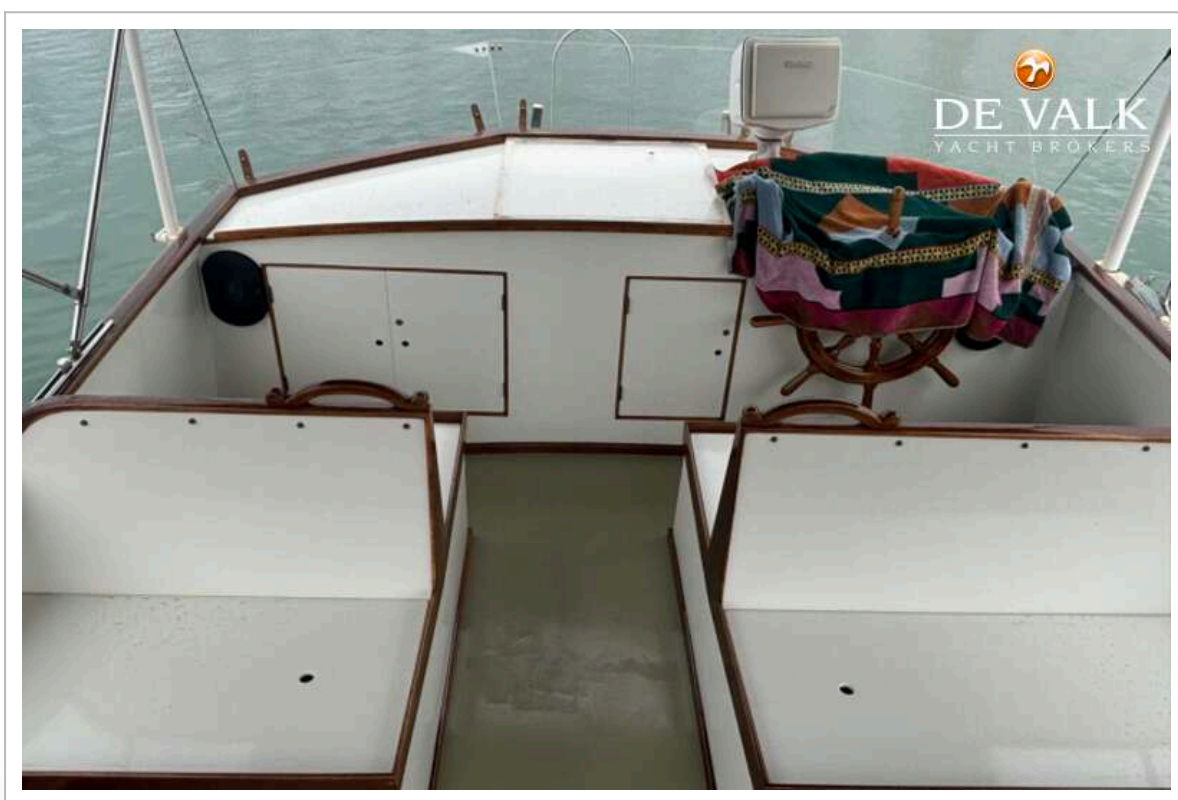
GRAND BANKS 42 CLASSIC



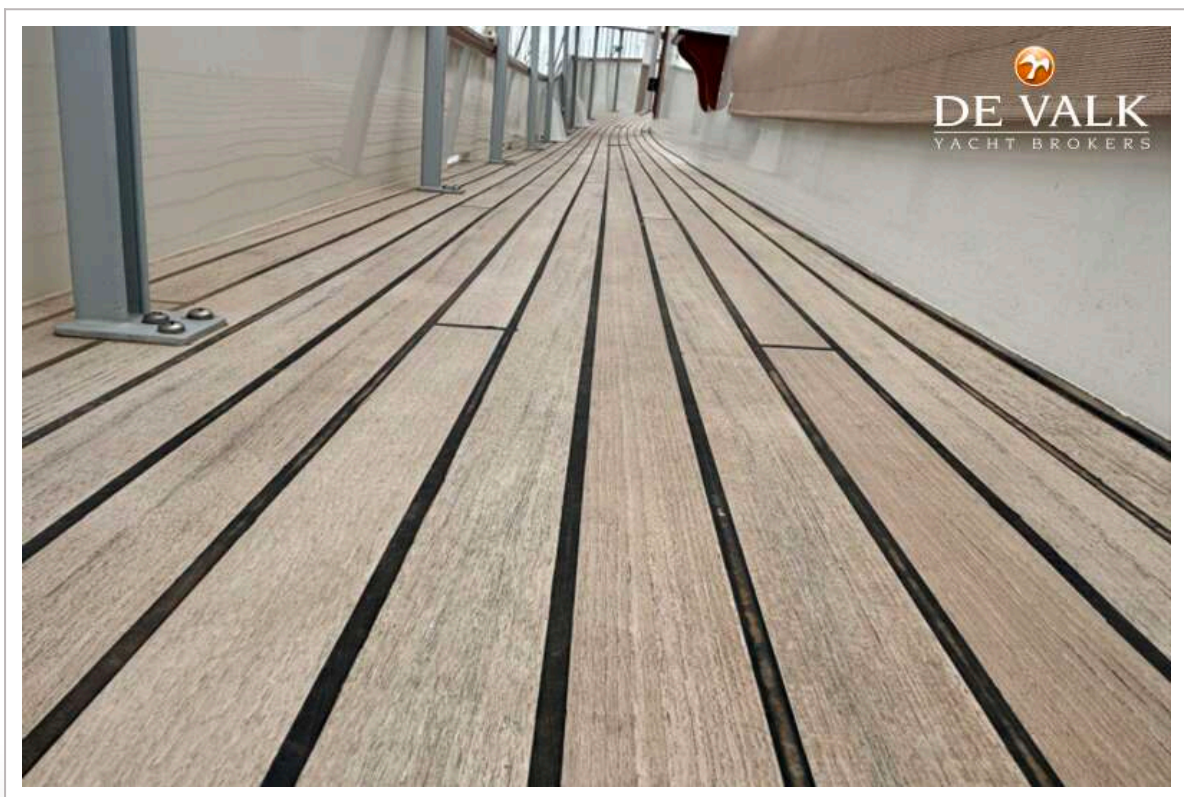
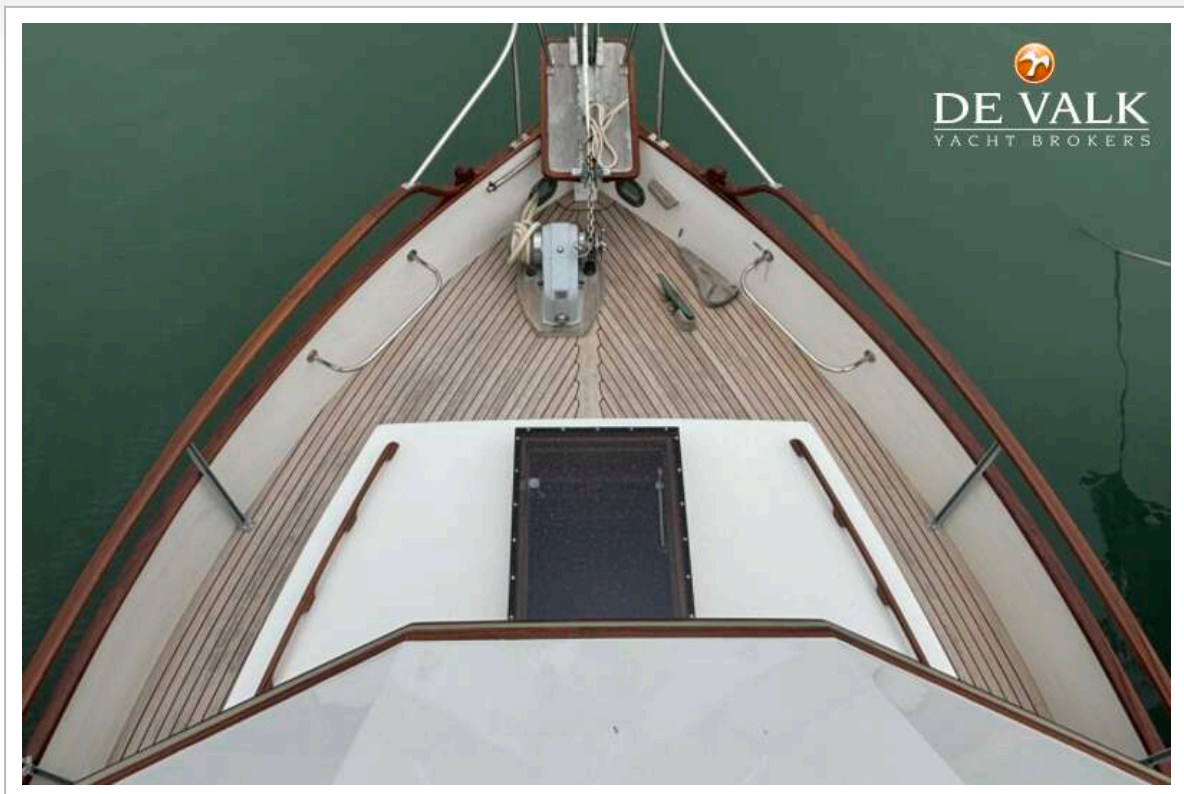
GRAND BANKS 42 CLASSIC



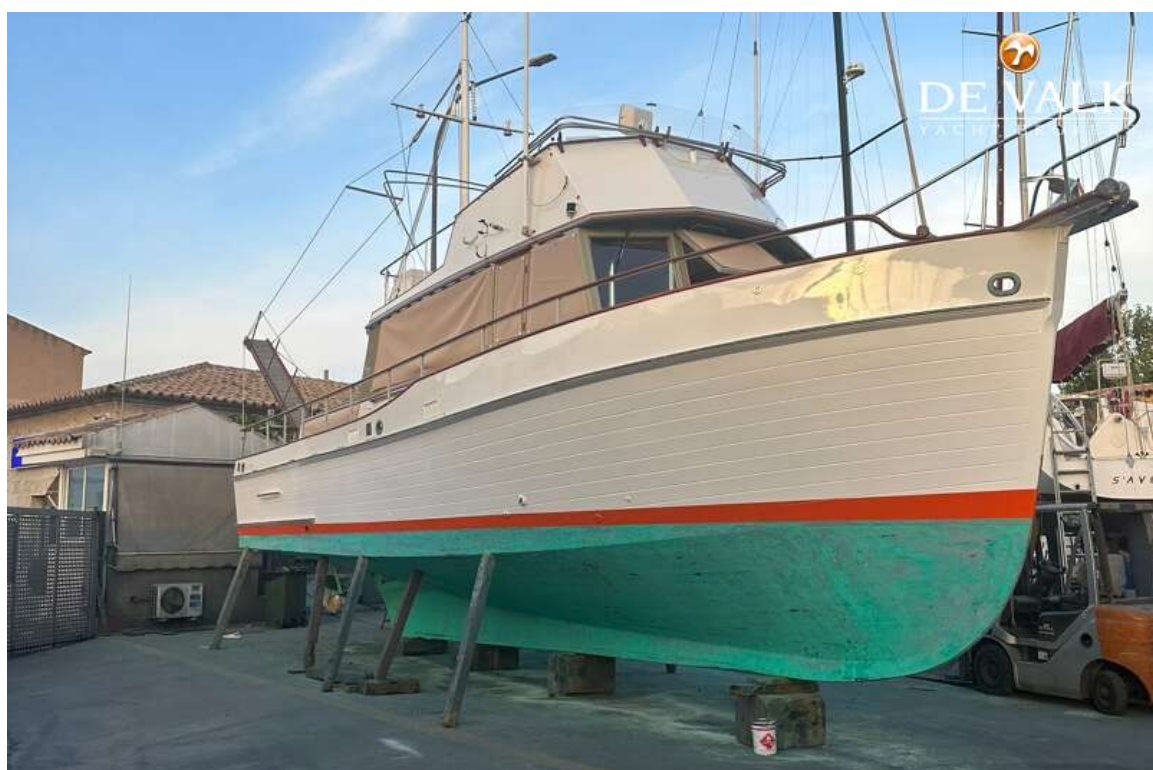
GRAND BANKS 42 CLASSIC



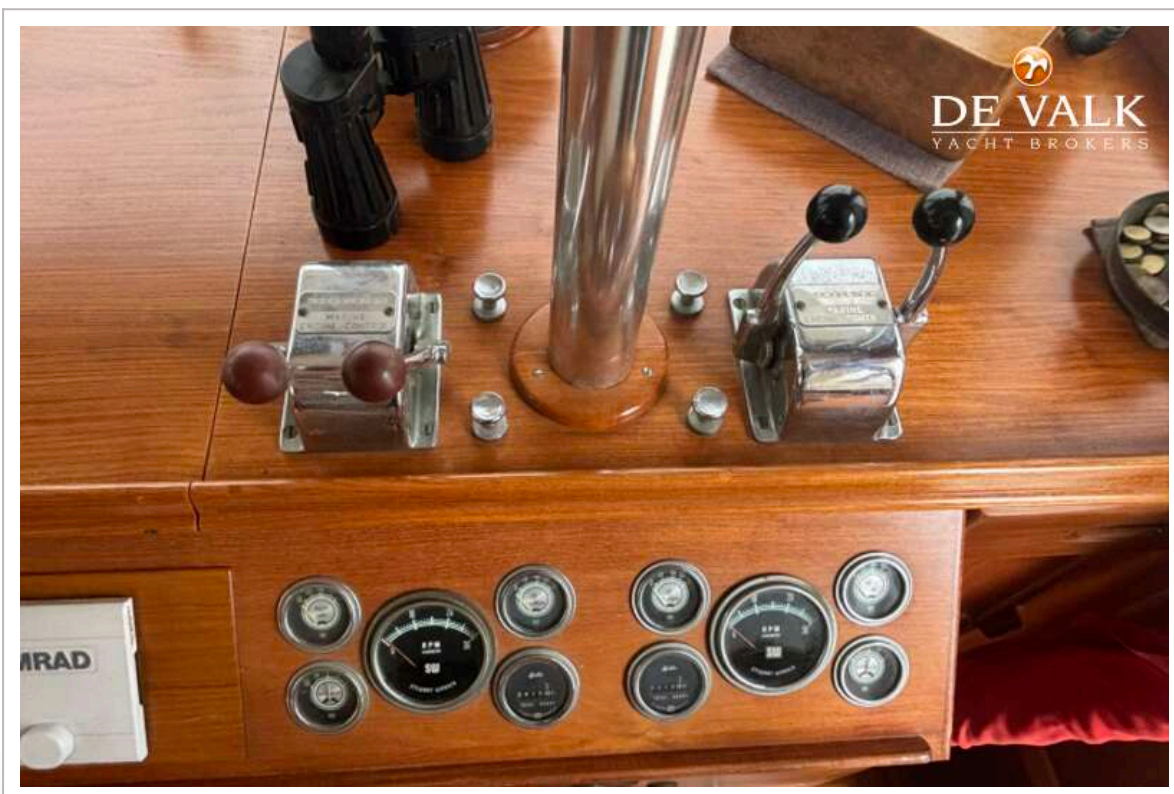
GRAND BANKS 42 CLASSIC



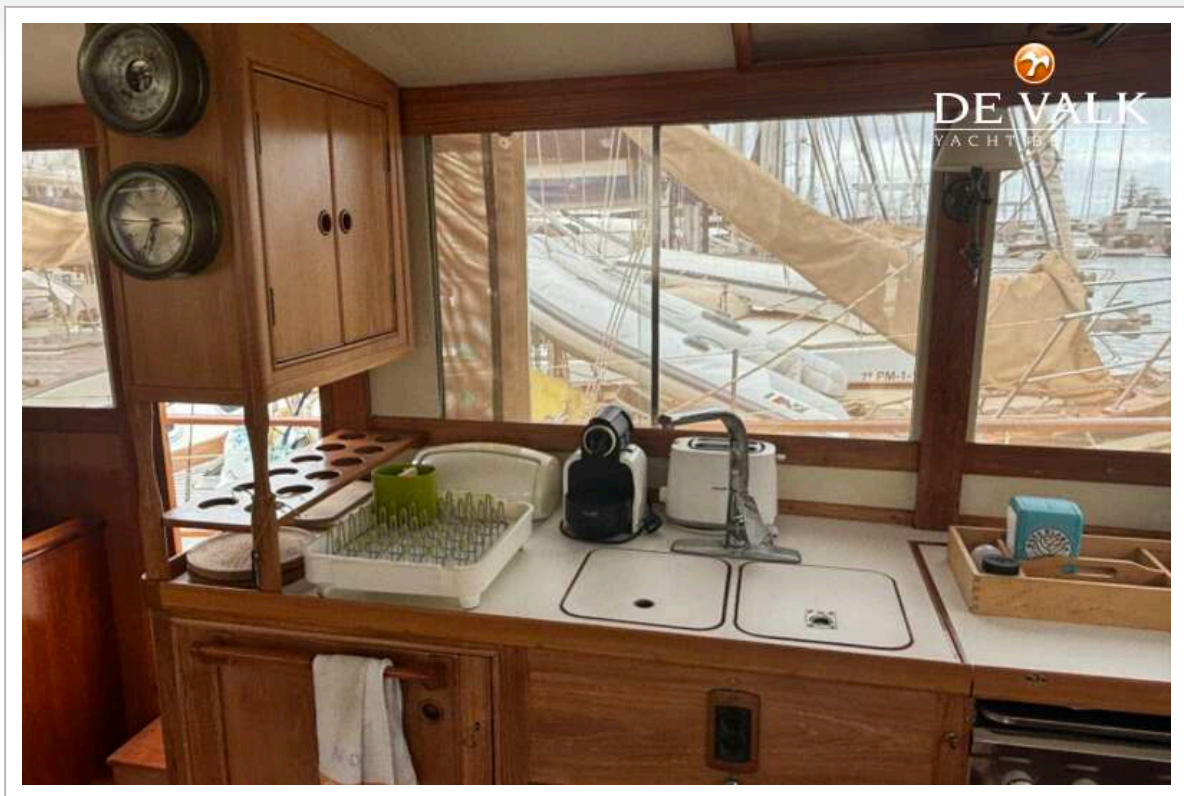
GRAND BANKS 42 CLASSIC



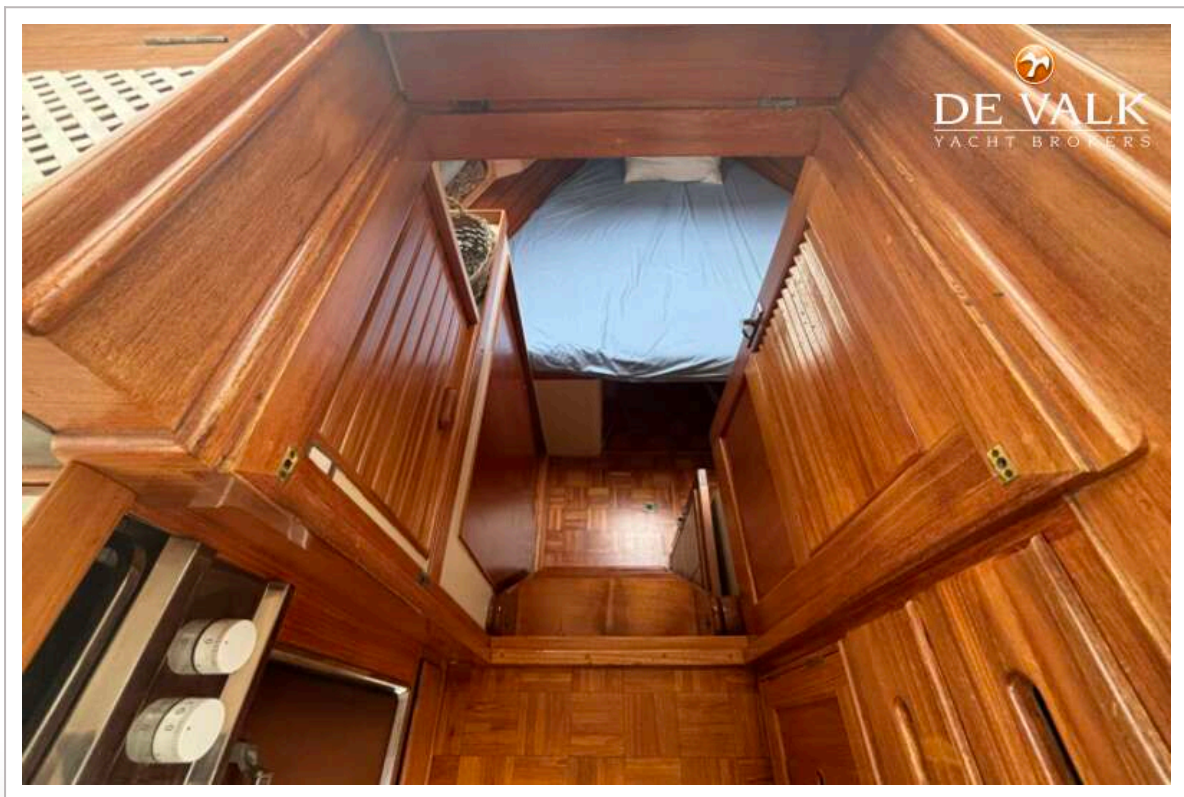
GRAND BANKS 42 CLASSIC



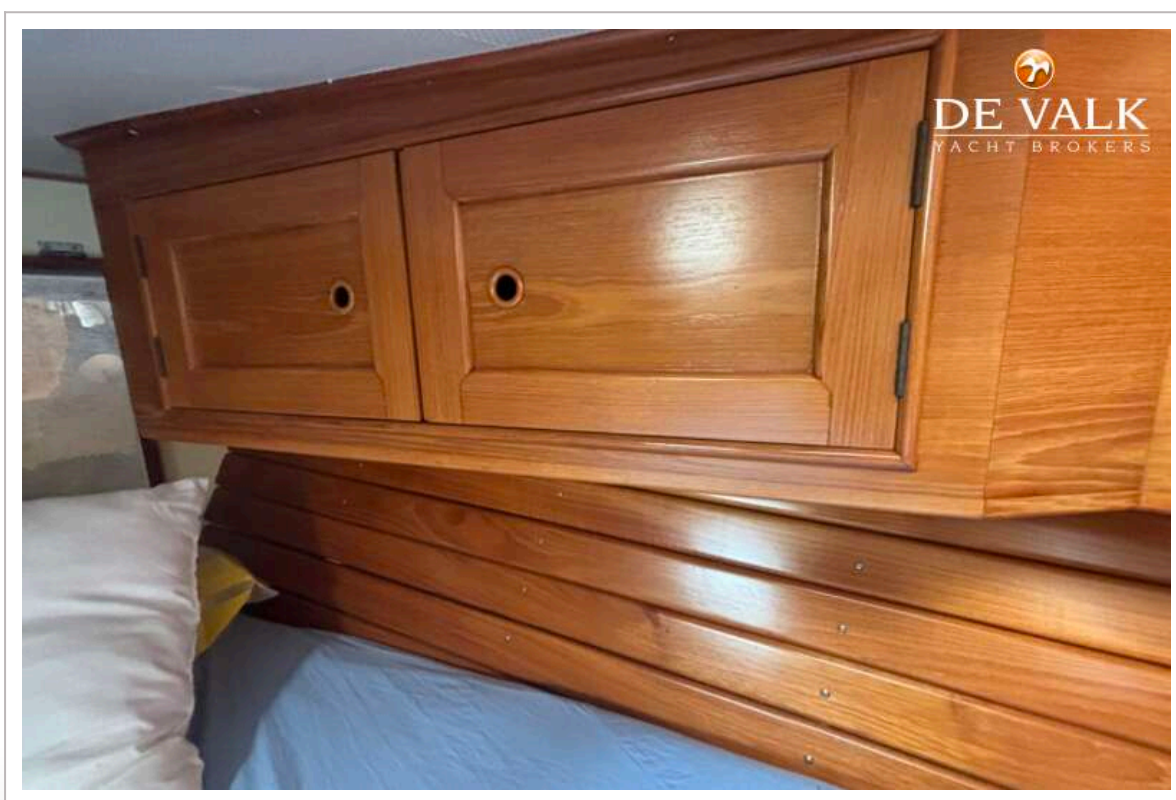
GRAND BANKS 42 CLASSIC



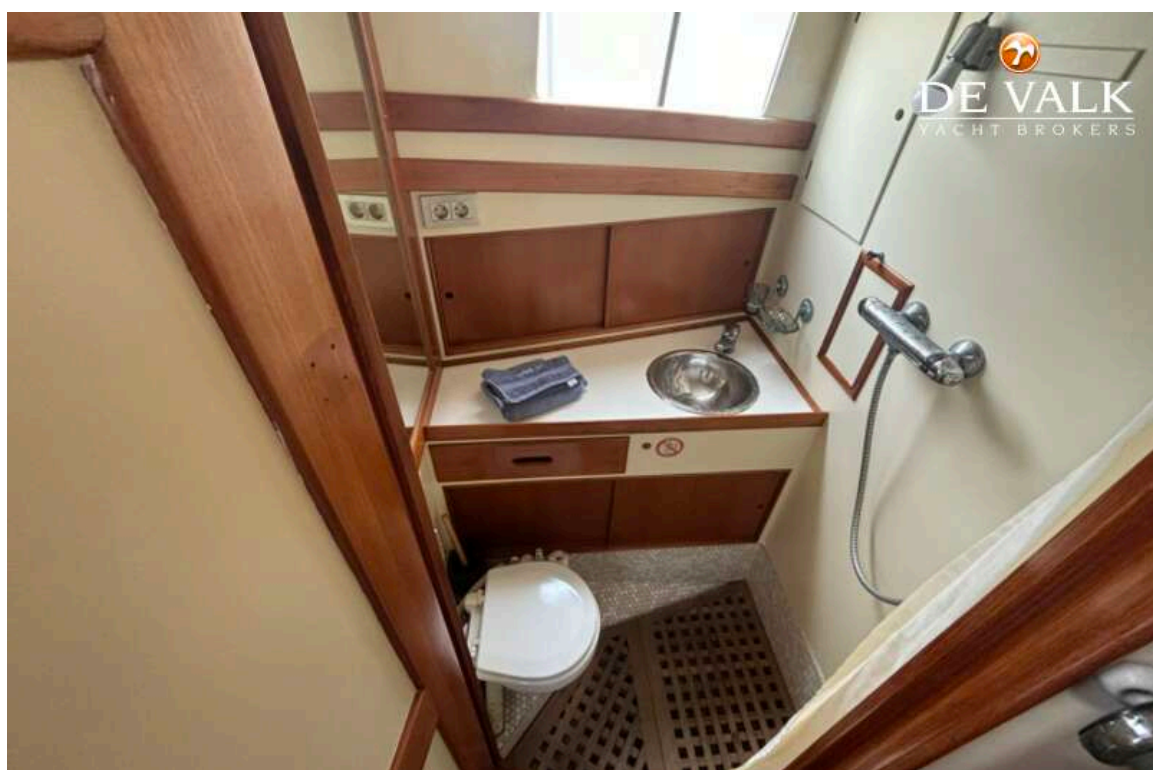
GRAND BANKS 42 CLASSIC



GRAND BANKS 42 CLASSIC



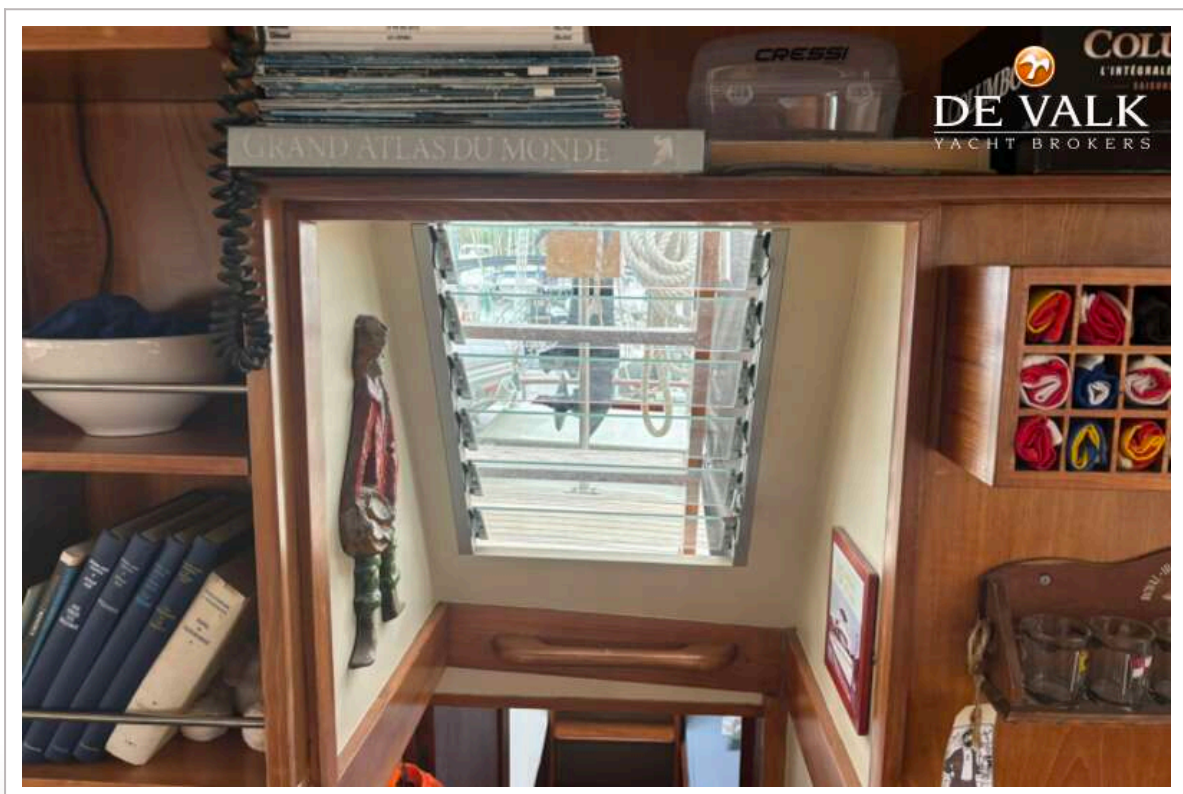
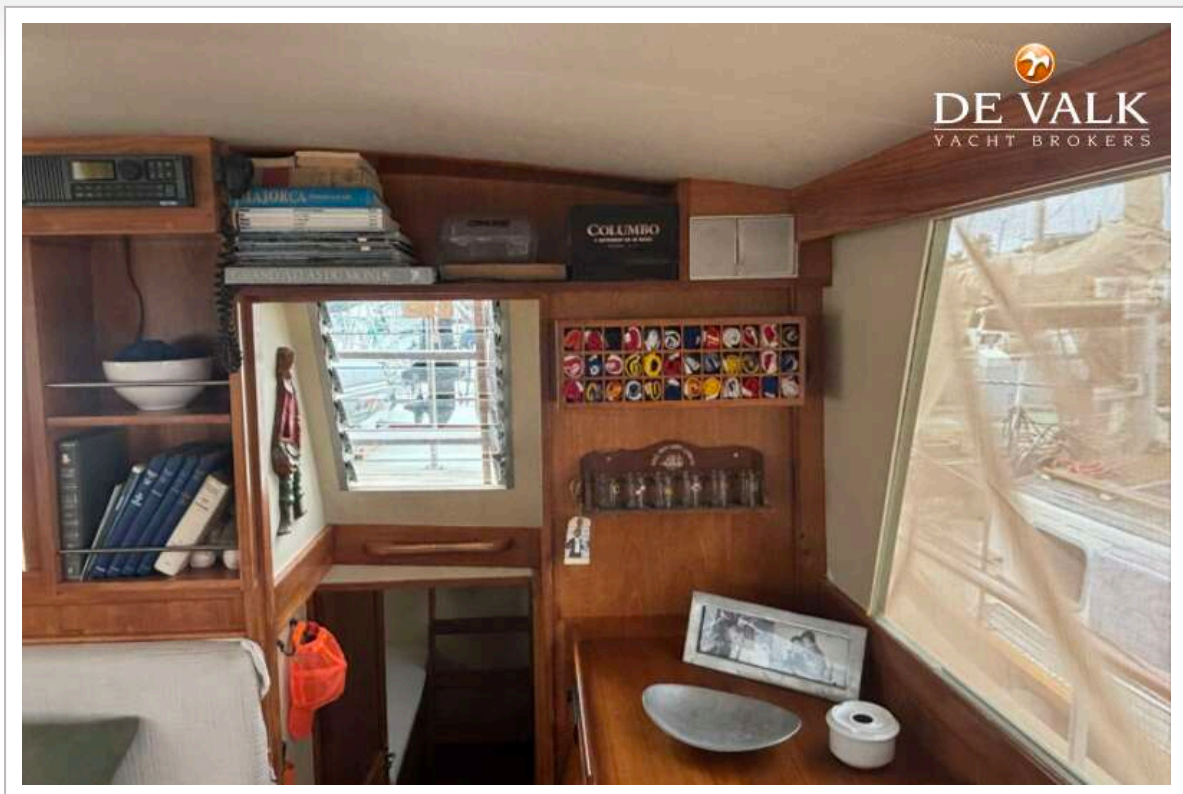
GRAND BANKS 42 CLASSIC



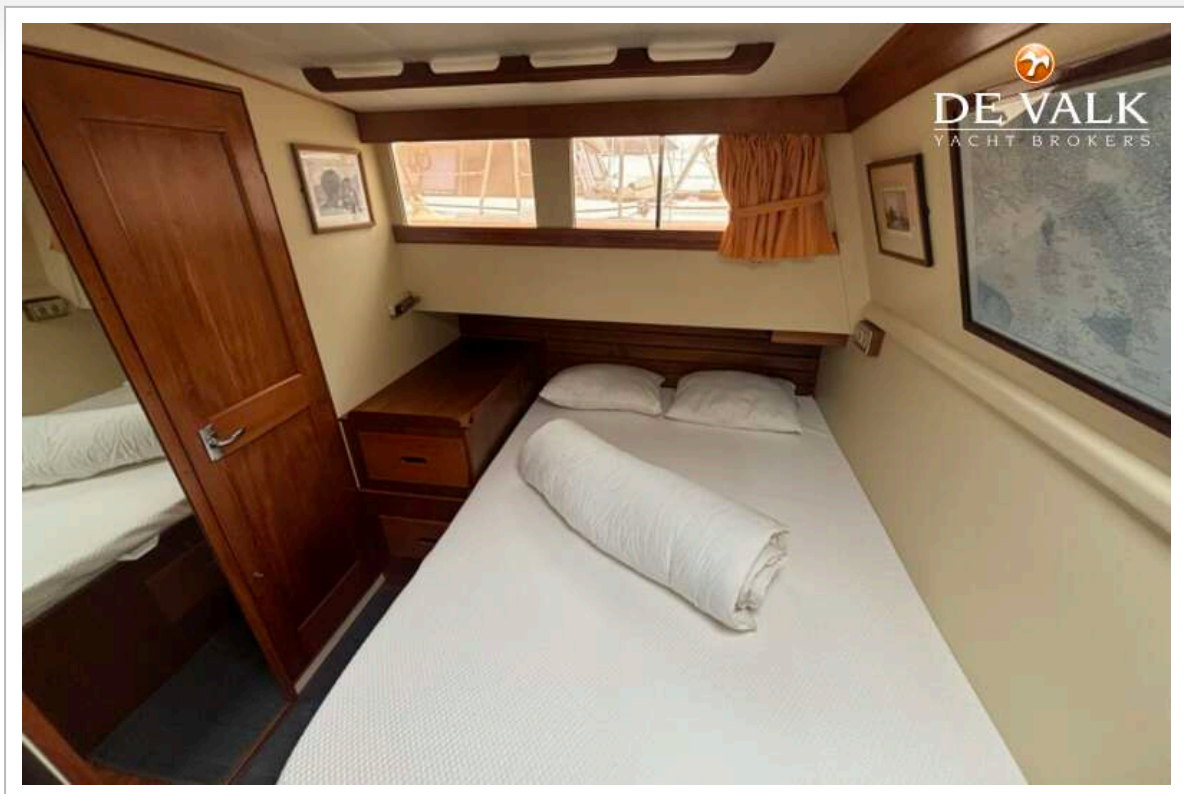
GRAND BANKS 42 CLASSIC



GRAND BANKS 42 CLASSIC



GRAND BANKS 42 CLASSIC



GRAND BANKS 42 CLASSIC

