

AUCTION



BALTIC 42 DP



DE VALK
YACHT BROKERS

BROKER'S COMMENTS

This Baltic 42DP by Doug Peterson has a timeless beautiful design. Looking urgently for a new owner who is willing to invest time to make her as glorious as she was in the past. She is priced to sell but needs work. She will be auctioned online on July 5th, 2021 in cooperation with Yachtbid & BVA Auctions. The starting bid is EUR. 10.000,- For more info go to the auction site:

<https://www.bva-auctions.com/en/auction/lot/57152/17274802?pid=0>

Eric Lamers

SPECIFICATIONS

Dimensions	12.78 x 4.07 x 2.41 (m)	Builder	Baltic Yachts
Built	1981	Cabins	2
Material	GRP	Berths	6
Engine(s)	1 x Perkins 4.108 diesel	Hp/Kw	45.00 (hp), 33.08 (kw)
Asking price	sold (VAT)	Lying	England

CONTACT

Sales office	De Valk Palma	Telephone	+34 971 40 29 11
Address	Port. Cala Nova, Avda. Joan Miro, 327 07015 Palma de Mallorca ES	E-mail	palma@devalk.nl

DISCLAIMER

These particulars are given in good faith as supplied but cannot be guaranteed.



GENERAL

Model	BALTIC 42 DP
Type	sailing yacht
LOA (m)	12,78
Beam (m)	4,07
Draft (m)	2,41
Year built	1981
Builder	Baltic Yachts
Country	Finland
Designer	Doug Peterson
Displacement (t)	8500
CE norm	A
Hull material	GRP
Hull colour	blue
Hull shape	round-bilged
Superstructure material	GRP
Deck material	GRP
Deck finish	teak
Cockpit deck finish	teak
Antifouling (year)	2020
Window frame	aluminium
Window material	polycarbonate
Radar arch	
Fuel tank (litre)	stainless steel 200
Level indicator (fuel tank)	yes
Freshwater tank (litre)	stainless steel 2 x 300
Wheel steering	cable steering

ACCOMMODATION

Cabins	2
Berths	6



Interior	teak
Floor	teak
Headroom saloon (m)	2.00
Chart table	yes
Galley	yes
Countertop	wood
Sink	stainless steel
Cooker	calor gas
Fridge	yes
Water pressure system	electrical
Owners cabin	double bed
Bed length (m)	2.20
Wardrobe	drawers and shelves
Bathroom	
Toilet	
Toilet system	manual
Wash basin	

MACHINERY

No of engines	1
Make	Perkins
Type	4.108
HP	45
kW	33,08
Fuel	diesel
Drive	shaft
Engine controls	bowden cable
Propeller type	feathering
Propeller blades	2
Electric bilge pump	yes
Start battery	1 x 75 amp



Service battery	2 x 130 amp
Battery charger	yes
Shorepower	with cable

NAVIGATION

Compass	yes
Depth sounder	yes
Windset	yes
VHF	yes
Radar	yes
Radar/GPS/plotter	yes
AIS receiver	yes

EQUIPMENT

Dodger	yes
Boarding ladder	stainless steel
Anchor	
Anchor chain	50 meter
Windlass	
Sea railing	stainless steel
Fenders	yes
Mooring lines	yes
Radio	yes

RIGGING

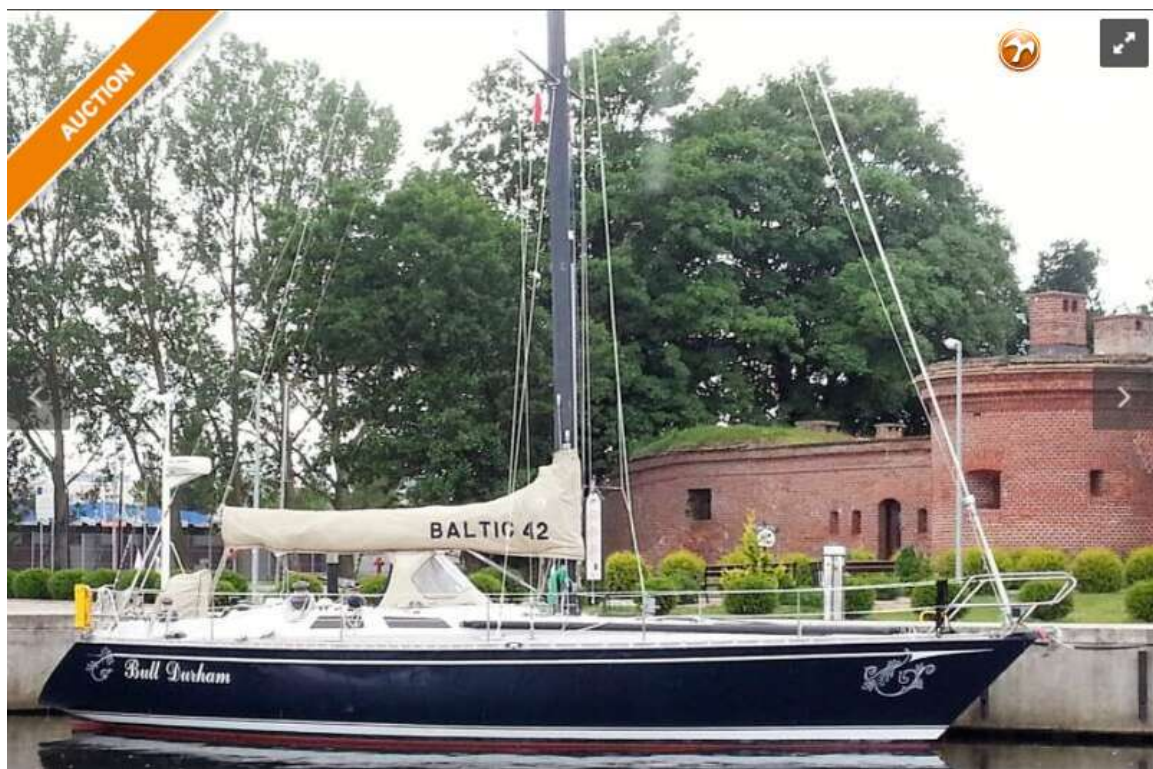
Standing rigging	Rod
Brand mast	Z-Spar
Material mast	aluminium
Spreaders	yes
Mainsail	yes



Mainsail cover	yes
Fully battened mainsail	yes
Jib	yes
Jib I	yes
Jib III	yes
Genoa	yes
Genoa II	yes
Genoa furler	yes
Reefing System	
Boomvang	hydraulic
Genoa sheetwinches	yes
Halyard winches	yes



BALTIC 42 DP



BROKERAGE | CHARTER | BERTHS | FINANCE | INSURANCE | YACHT MANAGEMENT
DE VALK
YACHT BROKERS



**This yacht will be auctioned,
for further details please visit www.devalk.nl**

**Dit schip zal worden geveild,
voor meer informatie gaat u naar www.devalk.nl**

**Dieses Schiff wird versteigert,
für weitere informationen besuchen Sie www.devalk.nl**

WWW.DEVALK.NL



DE VALK
YACHT BROKERS



BALTIC 42 DP



BALTIC 42 DP



BALTIC 42 DP



BALTIC 42 DP



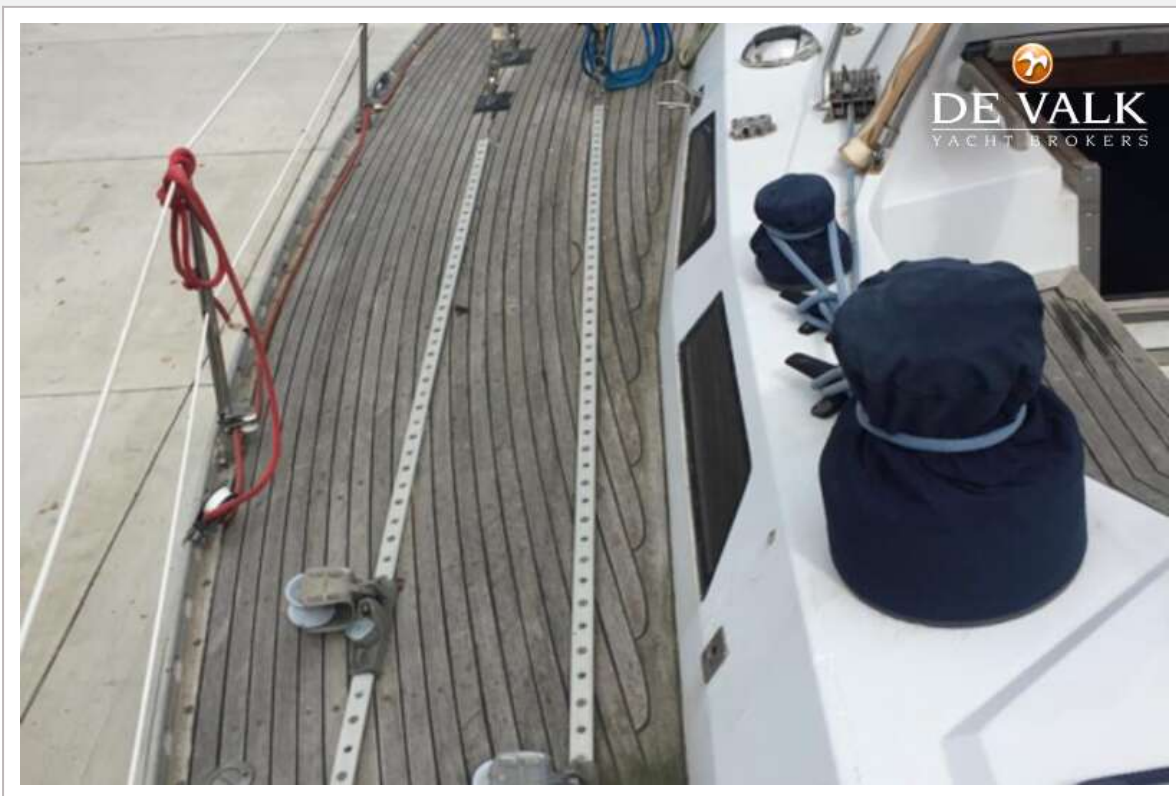


BALTIC 42 DP





BALTIC 42 DP



BALTIC 42 DP

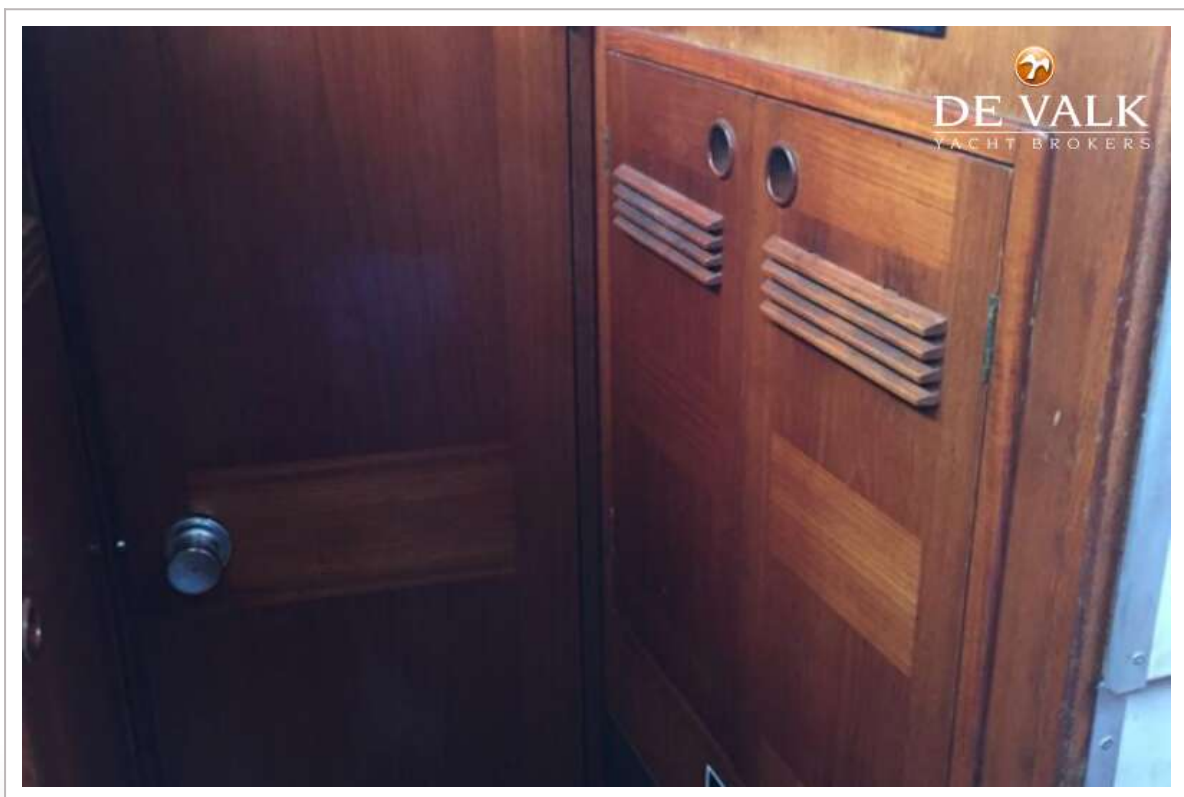
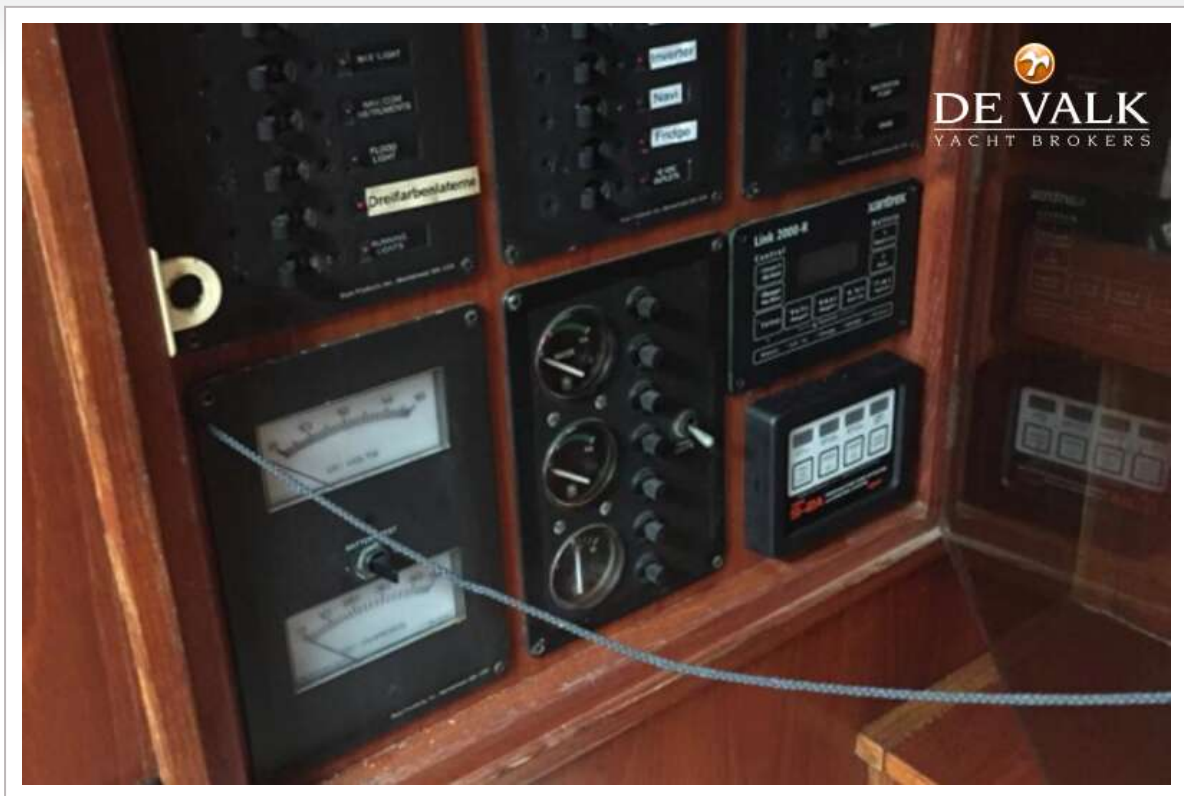




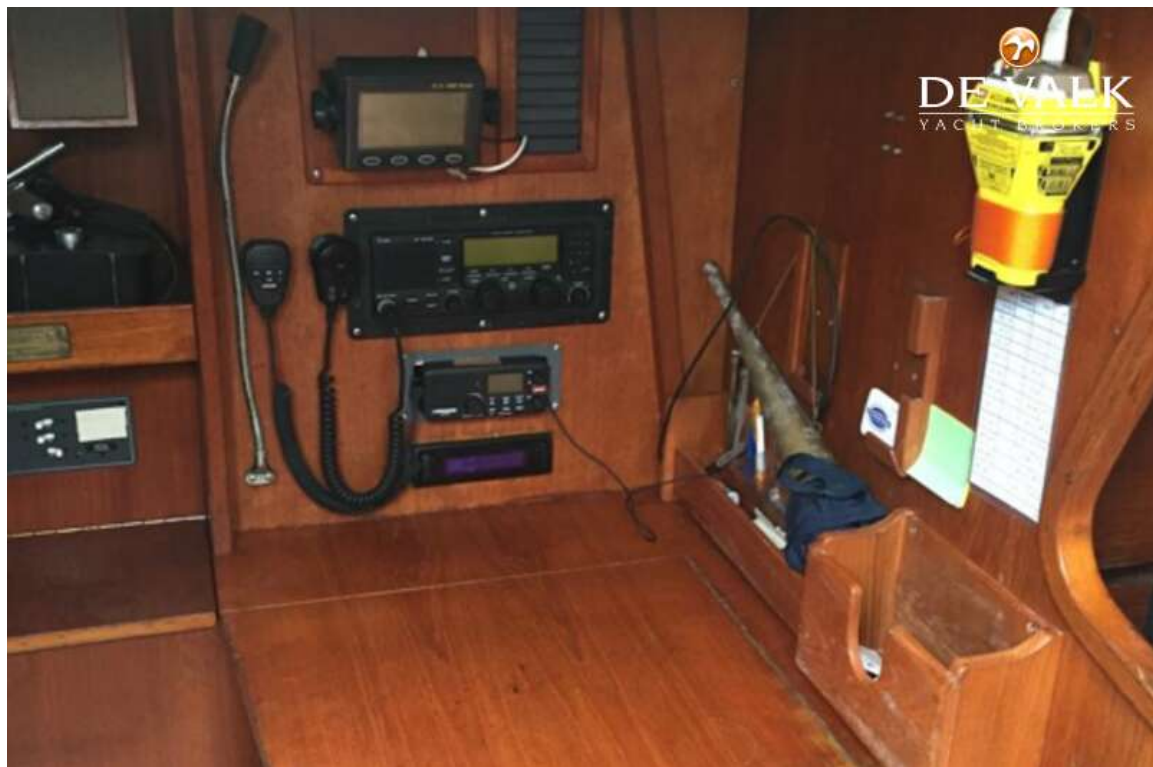
BALTIC 42 DP



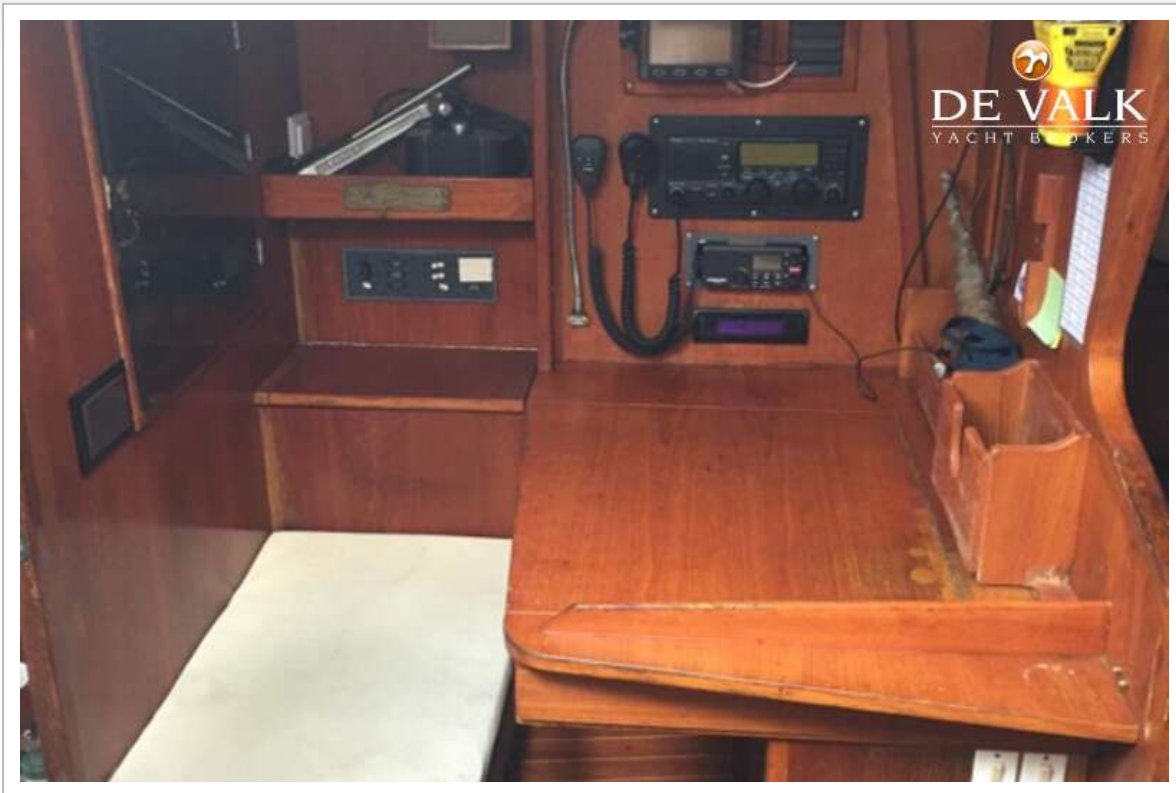
BALTIC 42 DP



BALTIC 42 DP



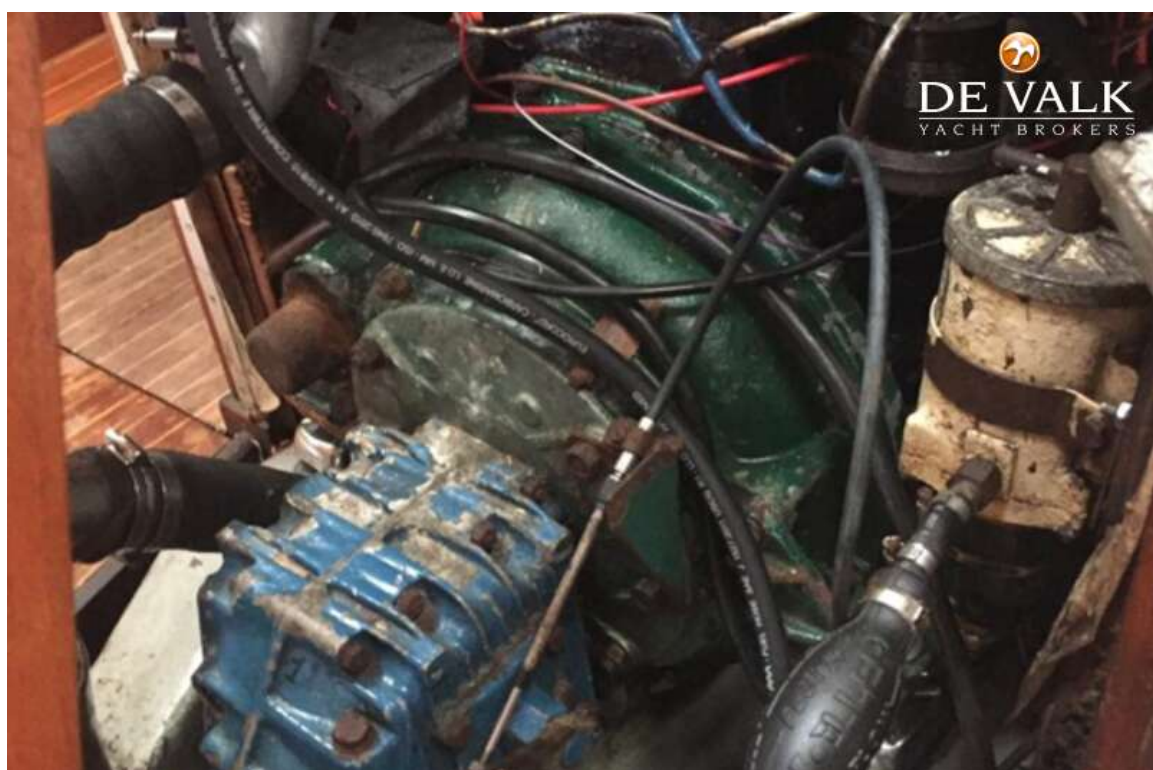
BALTIC 42 DP



BALTIC 42 DP



BALTIC 42 DP



BALTIC 42 DP

