



TRAWLER DUTCH BUILT



DE VALK
YACHT BROKERS

TRAWLER DUTCH BUILT

BROKER'S COMMENTS

Laertes is a Steel Dutch Trawler Yacht, designed by Kurt Beister and built in 1966 at N.V. Scheepswerf De Vooruitgang. Her round bilged displacement hull with 3 water tight bulkheads provides excellent seagoing capabilities and enables safe passages. Her machinery and equipment is up-to-date and of very good quality. The tasteful and timeless interior accommodates the owner and guests in two cabins. Laertes is lying in our outdoor sales marina and she can be inspected at De Valk Sneek.

Pieter Bosma

SPECIFICATIONS

Dimensions	21.75 x 5.40 x 1.80 (m)	Builder	D. Jph. Boot werf de Voorruit Alphen
Built	1966	Cabins	2
Material	Steel	Berths	4
Engine(s)	1 x Gardener 8L3B diesel	Hp/Kw	230.00 (hp), 169.28 (kw)
Asking price	€ 345.000 (VAT Paid)	Lying	at sales office

CONTACT

Sales office	De Valk Sneek	Telephone	+31 515 42 80 30
Address	Zwolsmanweg 7 8606 KC Sneek The Netherlands	E-mail	sneek@devalk.nl

DISCLAIMER

These particulars are given in good faith as supplied but cannot be guaranteed.



TRAWLER DUTCH BUILT

GENERAL

Model	TRAWLER DUTCH BUILT
Type	motor yacht
LOA (m)	21,75
LWL (m)	18,00
Beam (m)	5,40
Draft (m)	1,80
Air draft (m)	12,00
Headroom (m)	2,03
Year built	1966
Builder	D. Jph. Boot werf de Voorruit Alphen
Country	The Netherlands
Designer	Kurt Beister
Displacement (t)	80
Hull material	steel
Hull colour	green
Hull thickness (mm)	7/8 mm
Hull shape	S-bilged
Keel type	long keel
Bilge keels	yes
Superstructure material	steel And teak
Rubbing strake	steel
Deck material	steel
Deck finish	teak Teak deck made of 5 cm thick teak, walk-on all around.
Superstructure deck finish	paint
Antifouling (year)	2023
Dorades	yes
Window frame	brass
Window material	glass With Lexan stormplate's
Portholes	brass
Insulation	rockwool



TRAWLER DUTCH BUILT

Fuel tank (litre)	steel 2x 5500 Ltr.
Fuel daytank (litre)	335 Ltr
Freshwater tank (litre)	2600 Ltr
Blackwater tank (litre)	stainless steel 860 Ltr.
Blackwater tank extraction	deck extraction + pump
Wheel steering	powersteer + backup pump
Inside helm position	yes
Emergency tiller	yes
More info on paintwork	last painting of the hull and superstructure 2023
Extra info	build in Karcher High Pressure Cleaner
Extra info	Air Compressor
Extra info	Emergency fuel driven bilge pump

ACCOMMODATION

Cabins	2
Berths	4
Interior	teak And oak
Floor	wood Teak & holly and oak
Aft deck	yes
Pilot house	yes
Deck saloon	yes
Headroom saloon (m)	2.03 m
Heating	central heating Buderus
Heating 2	stove diesel Kabola
Navigation center	yes
Chart table	yes
Galley	yes
Countertop	marble
Sink	stainless steel Double
Cooker	ceramic ATG 4 burner
Extractor	yes



TRAWLER DUTCH BUILT

Microwave/oven combi	Samsung (2020)
Fridge	Siemens 169 ltr (2020)
Freezer	Siemens 63 Ltr (2020)
Hot water system	220V + engine Boiler 80 Ltr. for galley and guest cabin, 50 liter for aftcabin
Water pressure system	electrical 2 Speck pumps
Dishwasher	Siemens dishwasher, narrow version
Coffee maker	Nepresso Zenius
Owners cabin	double bed
Bed length (m)	Double bed 130 x 200 cm
Wardrobe	hanging/drawers/shelves
Bathroom	en suite
Toilet	en suite Tecma toilet electric
Toilet system	electric
Wash basin	in the bathroom
Shower	en suite
Guest cabin 1	bunk bed
Bed length (m)	2.00 m.
Wardrobe	hanging/drawers/shelves
Bathroom	en suite
Toilet	en suite
Washing machine	Miele Classic W1 (2020)
Dryer	Miele (2020)
Extra info	Towel dryer in the bathroom
Extra info	Interior Design Birgit Schnaase

MACHINERY

No of engines	1
Make	Gardener
Type	8L3B
HP	230



TRAWLER DUTCH BUILT

kW	169.28
Fuel	diesel
Year installed	1966
Year of overhaul	2019 Major inspection and partly overhaul by Gardner UK.
Maximum speed (kn)	9,8
Cruising speed (kn)	8,5
Consumption (l/hr)	25
Range (nm)	3000
Engine cooling system	freshwater heat exchanger Engine can be (pre)heated by heat exchanger in heating system
Drive	shaft
Shaft seal	yes
Engine controls	bowden cable
Gearbox	3:1
Bowthruster	hydraulic Replaced 2023, proportional 30 Hp
Sternthruster	electric 2x 11 Hp, proportional
Exhaust	dry
Propeller type	fixed
Propeller blades	4 blades 53 inch
Propeller shaft material	steel 8 inch
Shaft lubrication	grease
Manual bilge pump	yes
Electric bilge pump	yes
Electrical installation	220/24/12
Generator	wet exhaust 1x Lister Petter 12,5 Kw 220V
Generator 2	1x Fisher Panda 4.0 Kw 24 V (2012)
Batteries	yes
Start battery	4x AGM 100 Ah (2018)
Service battery	8x AGM 220 Ah (2018)
Generator battery	80 Amp. (each genny has a own starter battery and charger)
Battery monitor	Victron GX Colour control and Victron BMV 702
Battery charger	Victron Skylla 120A



Battery charger/inverter	4x Victron Quatro total of 12 Kw. (2019)
Diode battery combiners	yes
Shorepower	with cable And Glendenning Cable mate with 100 meter cable
Insulation transformer	With Softstart
Extra info	double hydraulic power takeoff
Extra info	magnetic diesel cleaning system plus large filters
Extra info	CSI 8510 alarm for bilge, oil pressure, tank levels, shore power and burglar alarm by phone message

NAVIGATION

Compass	Observer 16 inch
Electric compass	Furuno Satelite Compass SC70 (2020)
Depth sounder	VDO
Log	Furuno + VDO
Windset	VDO
Fish finder	Furuno FCV 582L echosounder and fishfinder
VHF	Sailor RT4288 VHF-DSC, 1x Icom IC-M423BBE,
VHF handheld	2x Standard Horizon Handheld VHF
Autopilot	Cetrek 740
Radar	Furuno 2115 BB with ARPA
GPS	3x Furuno and Digital Yacht GPS Antenna's 1x Leica DGPS MX 420, 1x Furuno GP39 (2019)
Plotter/GPS	1x Furuno Navnet 1900C C-Map NT Timezero Navigator 4.1 with tides weather, AIS and ARPA
Weather receiver	Furuno Weatherfax
Navtex	JRC with printer, and Furuno Navtex WX30
AIS transceiver	True Heading AIS-CTRX class B
Transmitter	Icom M 710 SSB Tranceiver
EPIRB	Epirb Tron 60
Personal MOB transmitter	Sart Tron
Camera	In wheelhouse 2x engine room, salon, galey and mizzen mast.
Navigation lights	yes



TRAWLER DUTCH BUILT

Searchlight	Noack 250W
Loudhailer	Raytheon
Extra info	Locomarine Yachtrouter with 4g phone and data connection.
Extra info	Inmarsat Isatphone model 2.1 (2020)

EQUIPMENT

Storm blinds	yes
Gangway	Folding
Deck shower	yes
Anchor	yes
Anchor chain	yes
Anchor 2	Pool
Windlass	hydraulic
Capstan	yes
Deck wash	yes
Dinghy	Rigid Bottom 330 m
Outboard	10 Hp Yamaha
Deck crane	manual
Life raft	yes
Clearview window	yes
Window heating	yes
Horn	yes
Fenders	yes
Mooring lines	yes
Spare parts	yes
Tools	yes
Alarm system	yes
TV	yes
TV receiver	yes
Speakers in salon	yes
Clock - barometer	Meteograph with paper recording



Fire extinguisher	yes
Auto extinguisher system	yes



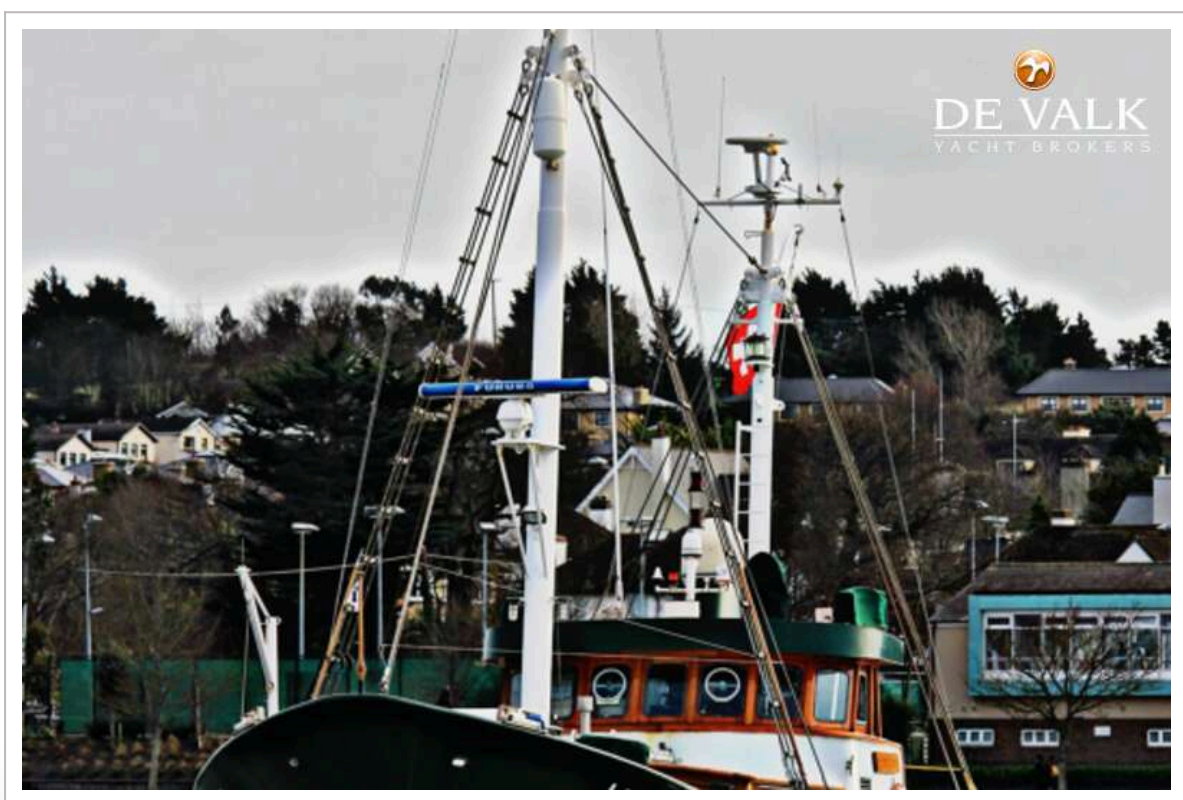
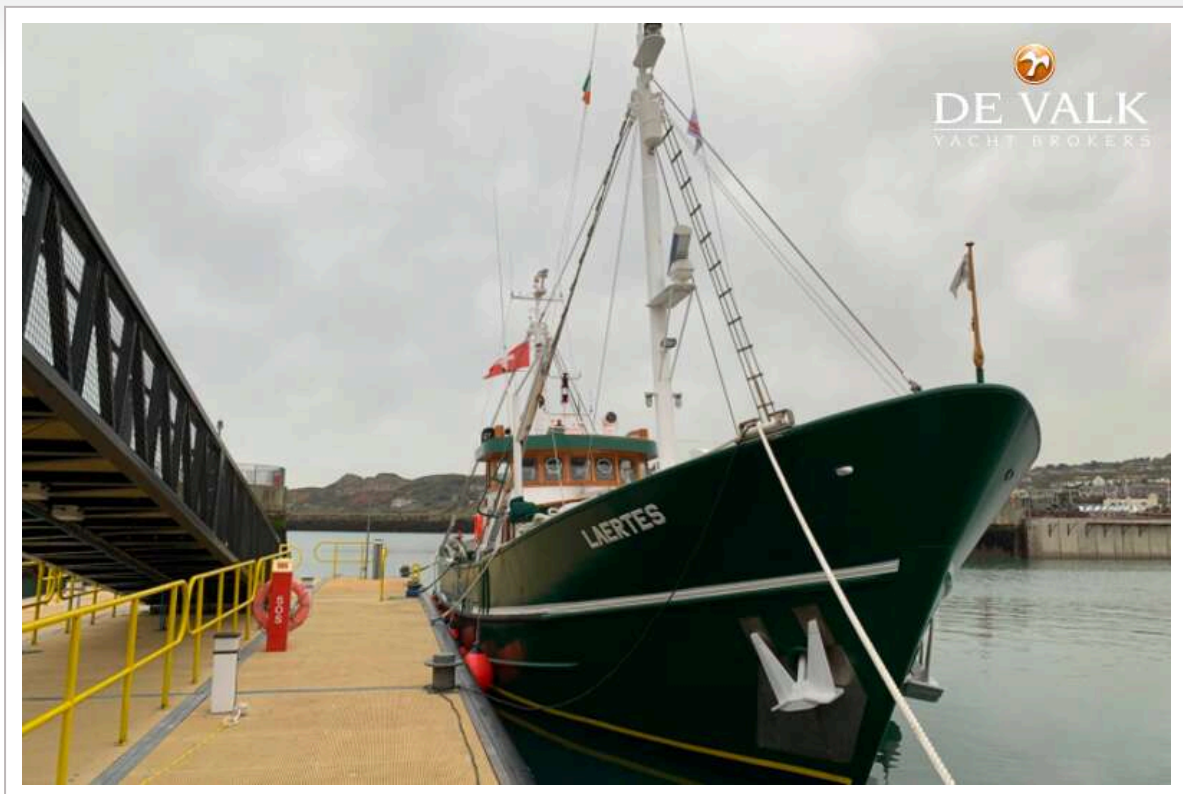
TRAWLER DUTCH BUILT



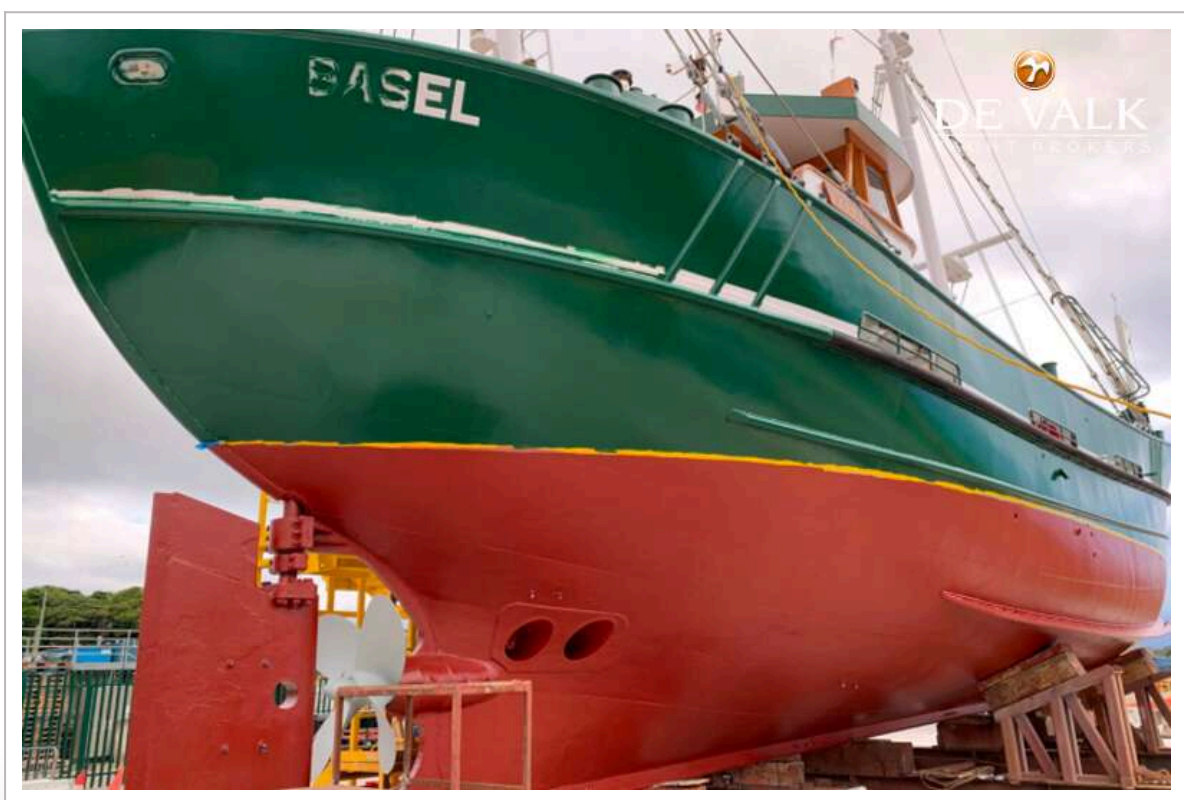
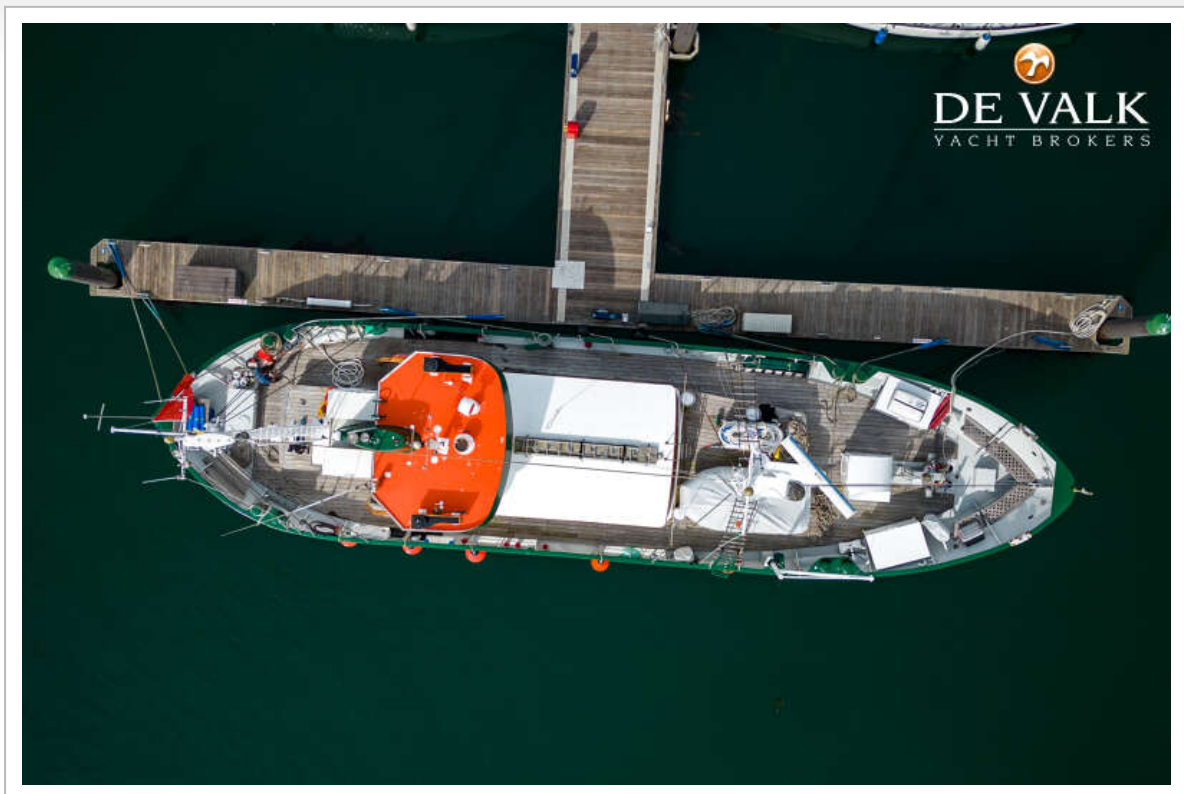
TRAWLER DUTCH BUILT



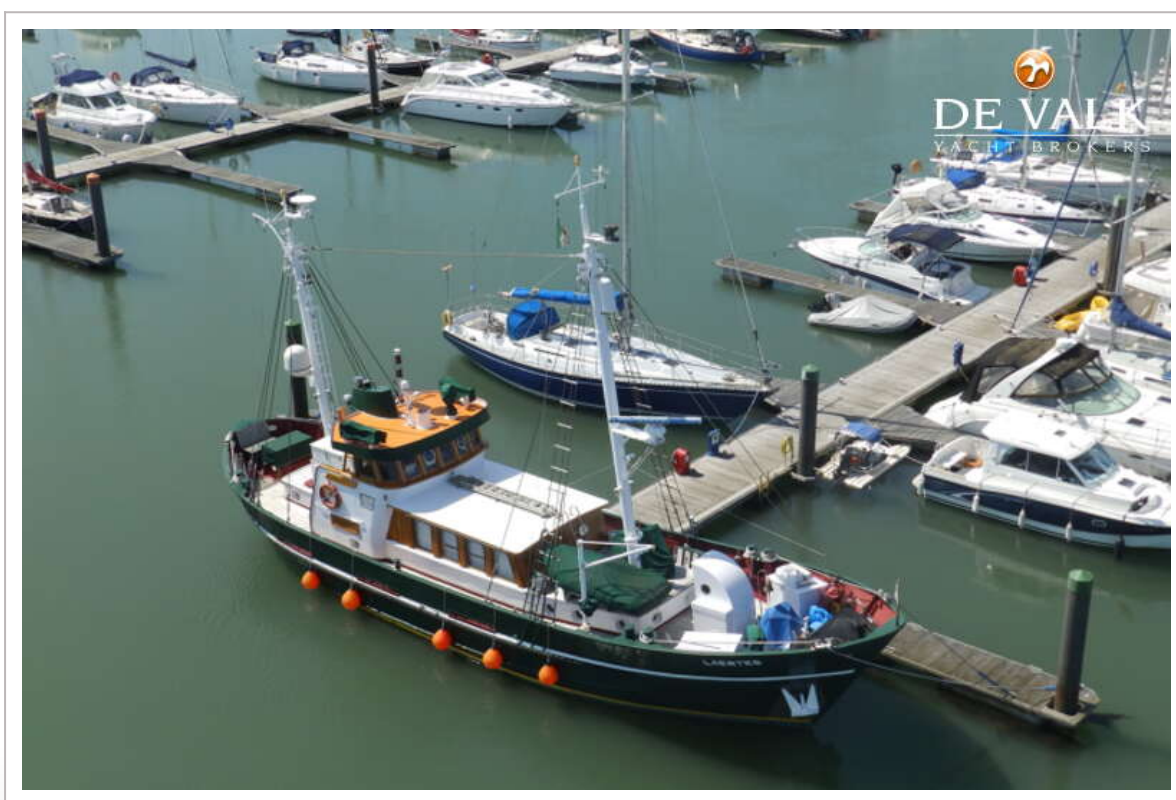
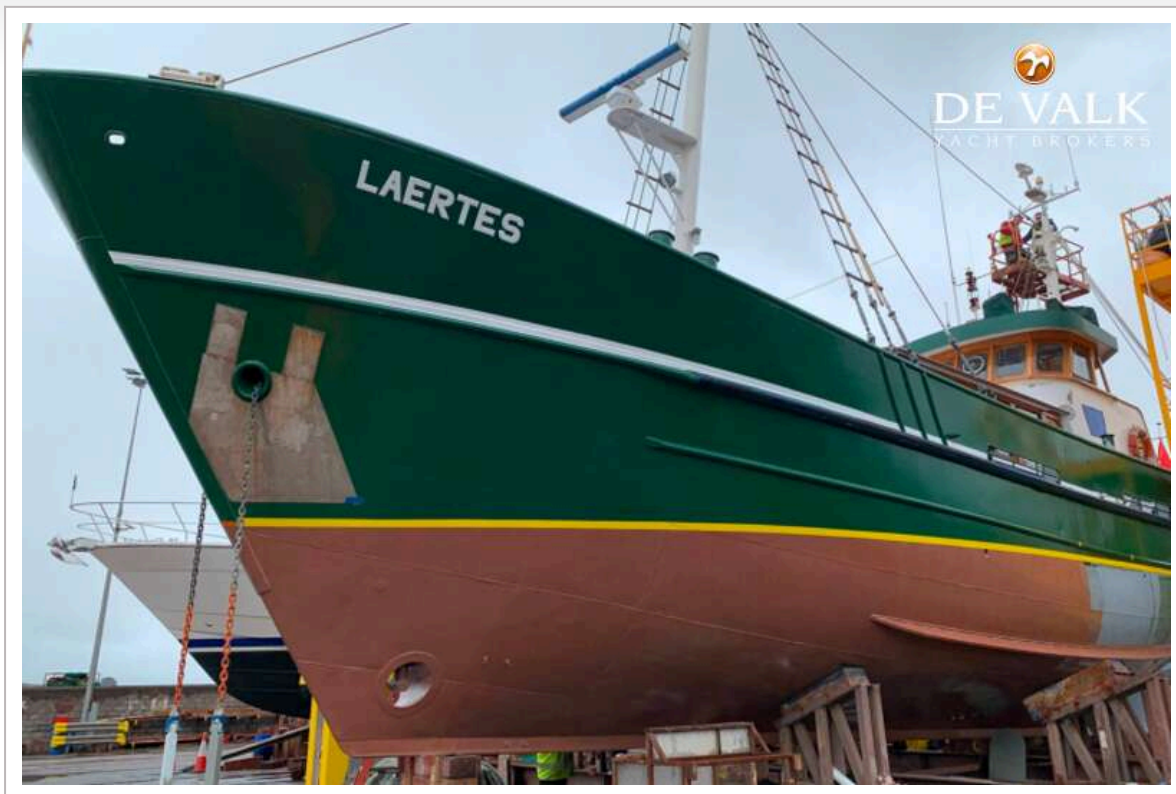
TRAWLER DUTCH BUILT



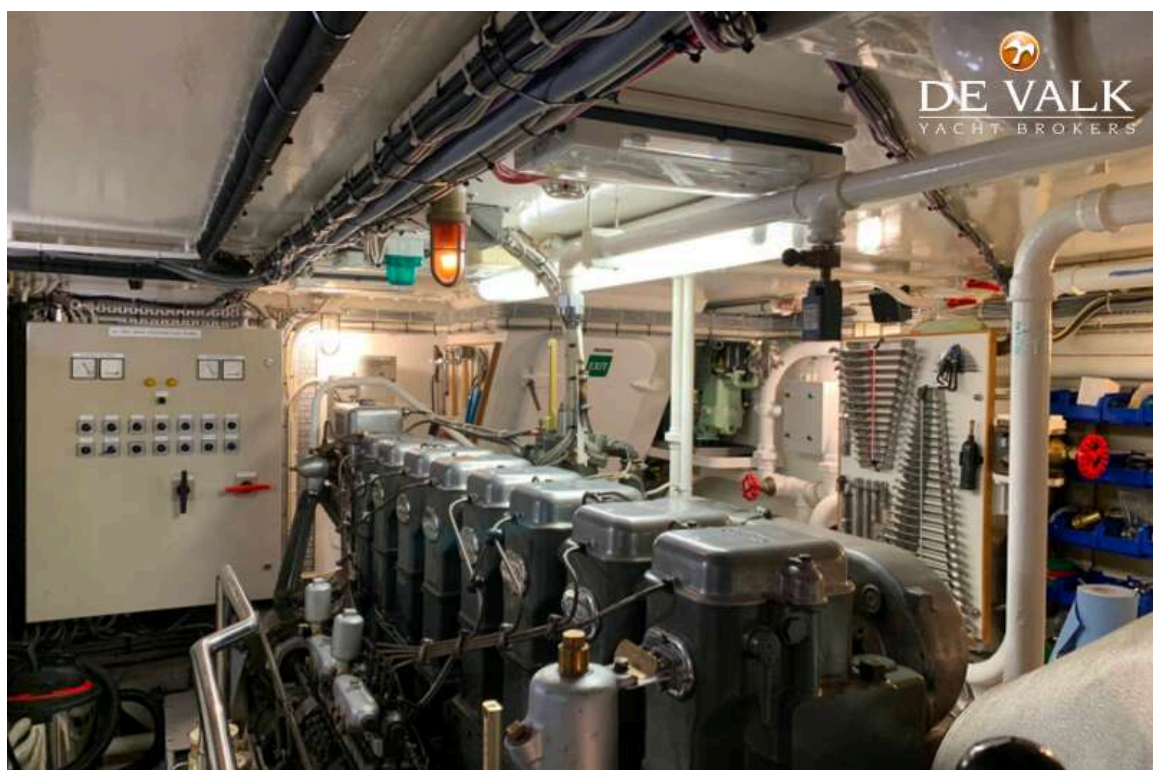
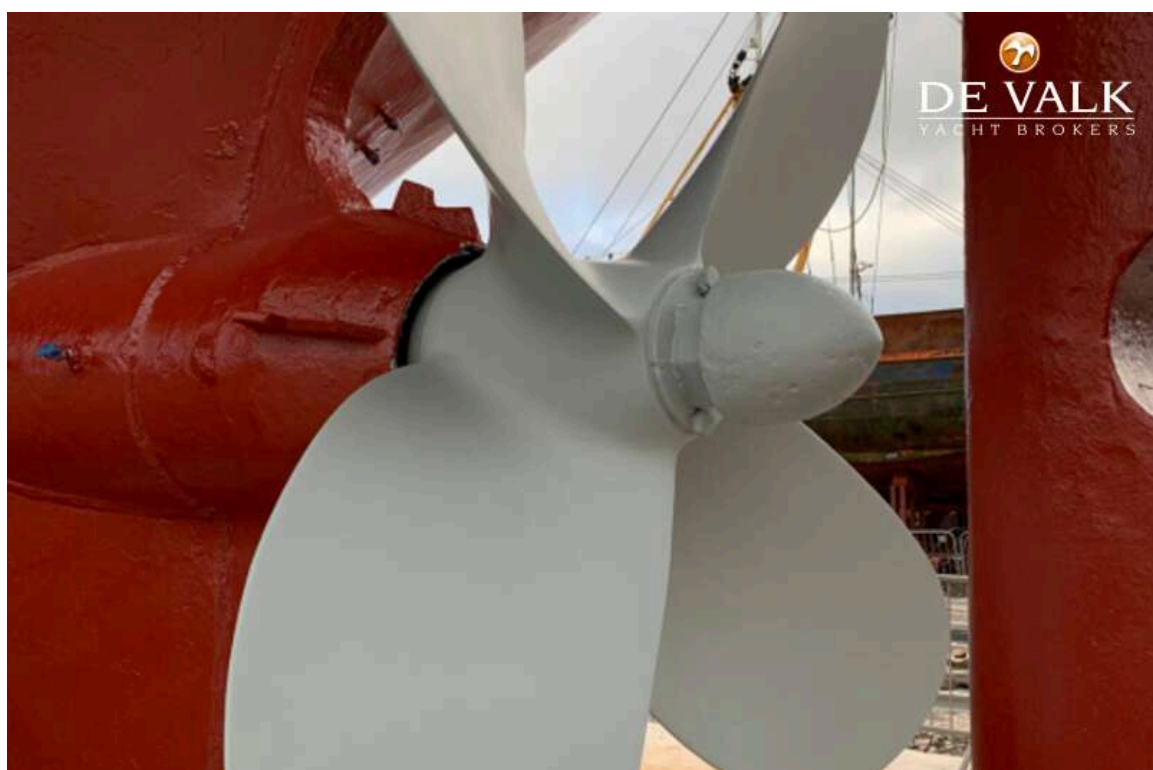
TRAWLER DUTCH BUILT



TRAWLER DUTCH BUILT



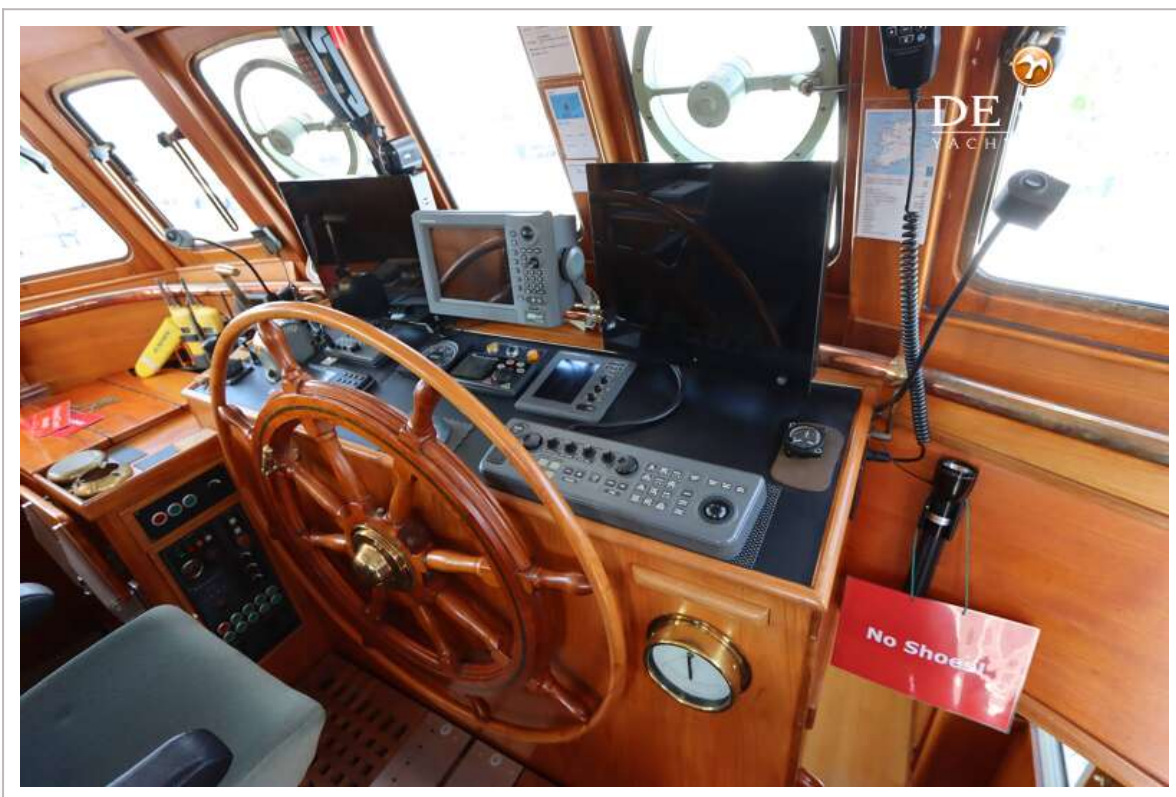
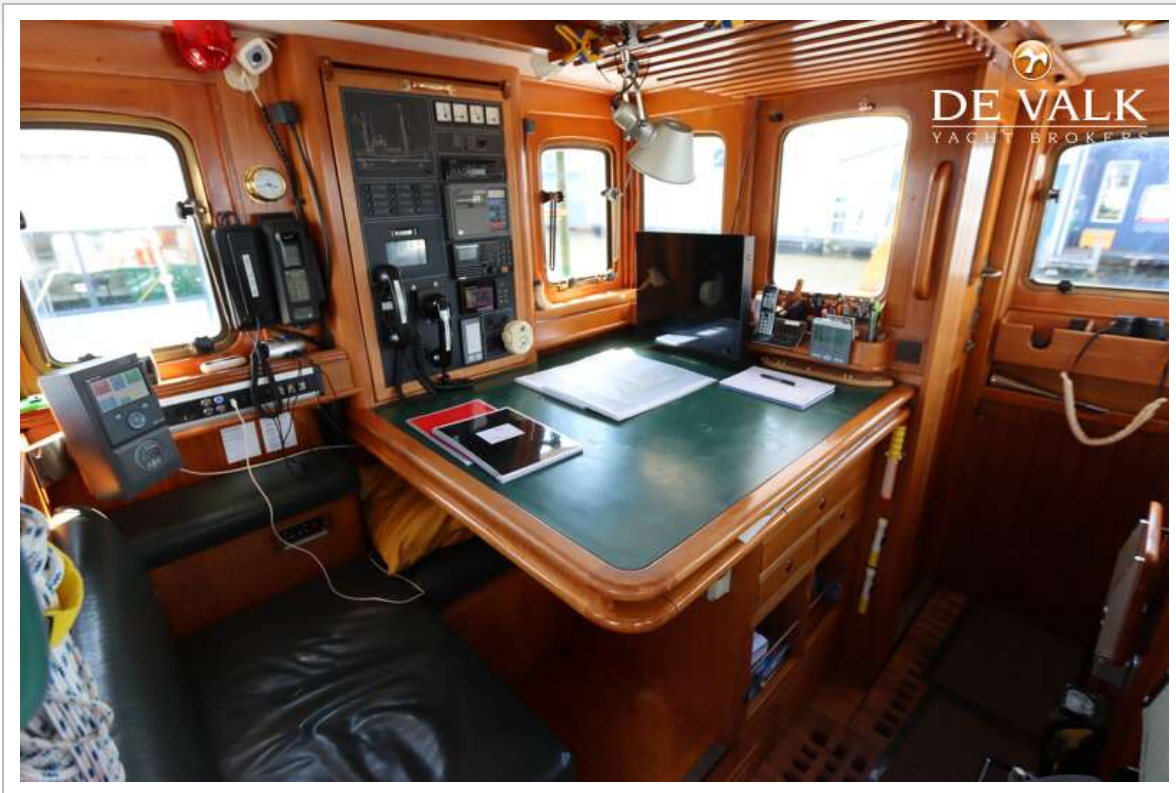
TRAWLER DUTCH BUILT



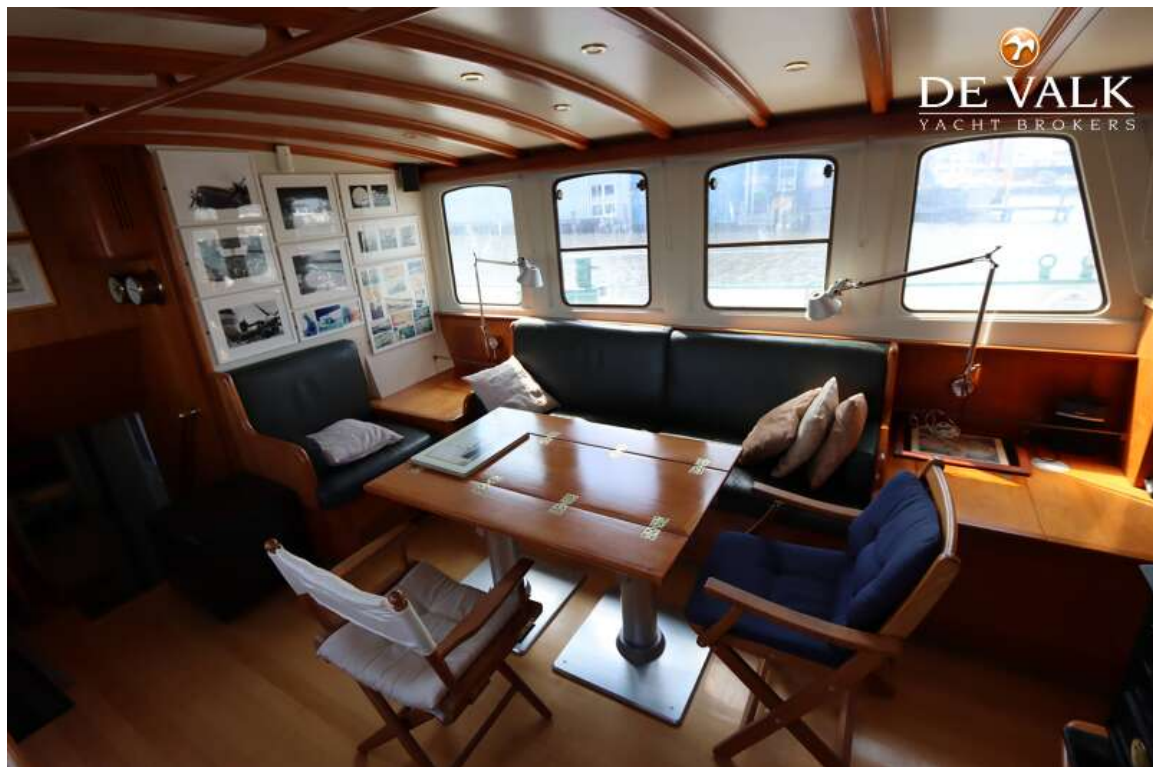
TRAWLER DUTCH BUILT



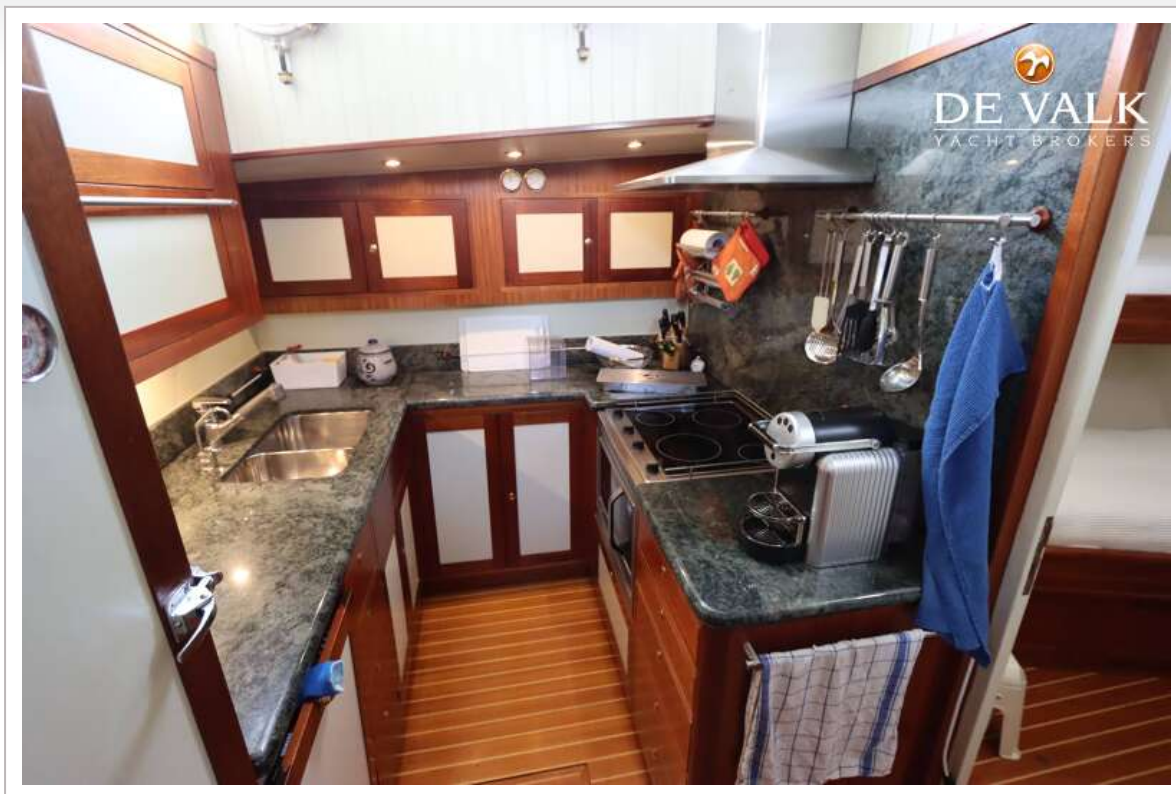
TRAWLER DUTCH BUILT



TRAWLER DUTCH BUILT



TRAWLER DUTCH BUILT



TRAWLER DUTCH BUILT



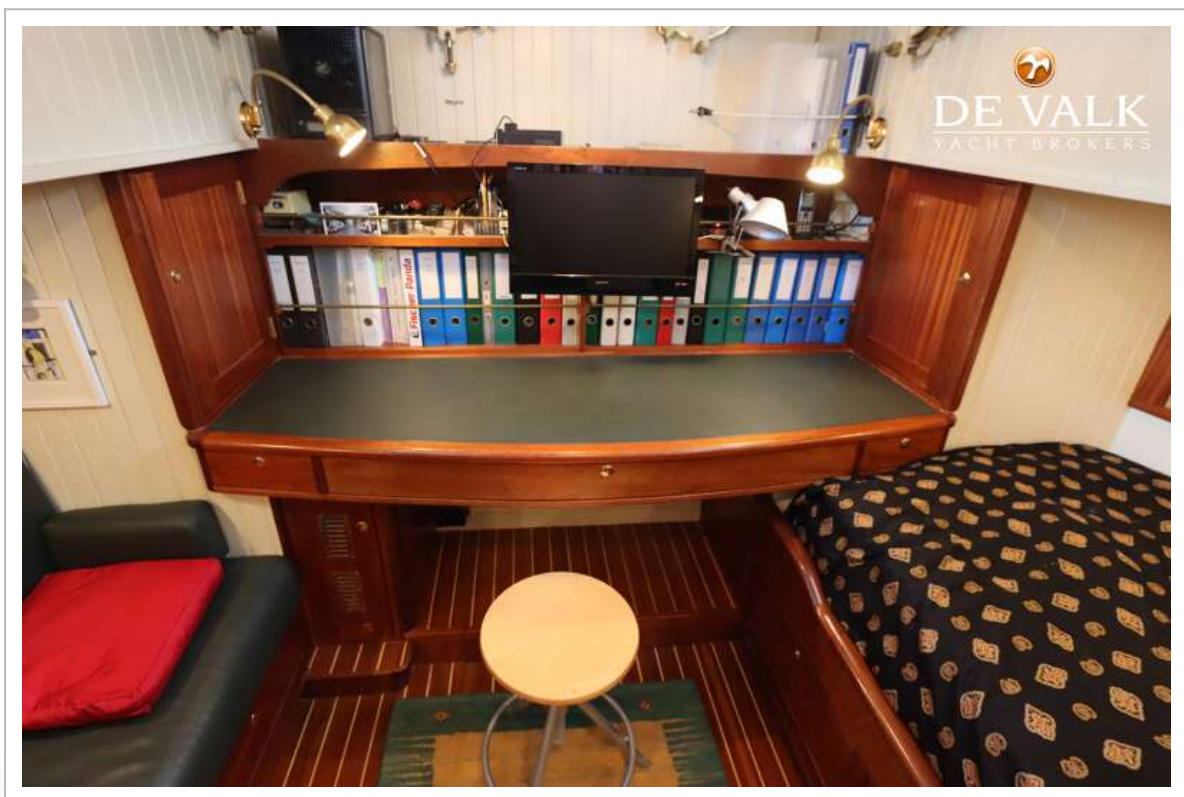
TRAWLER DUTCH BUILT



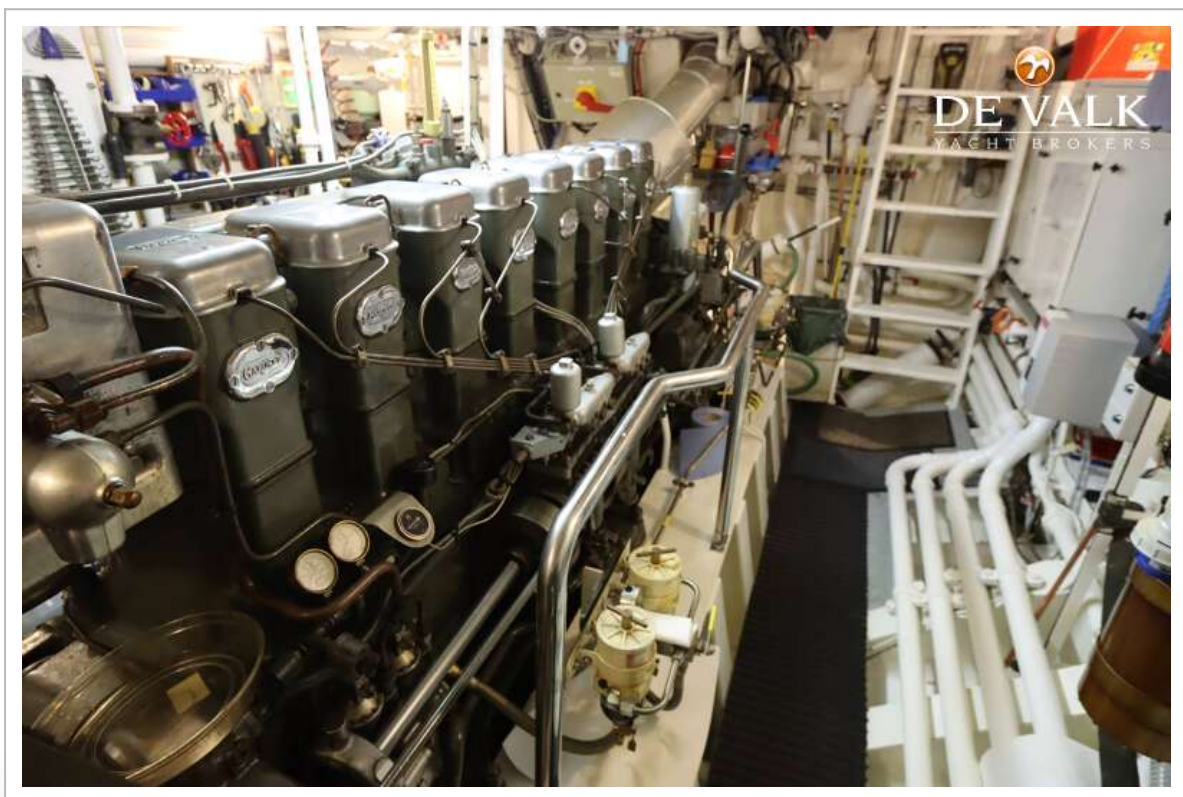
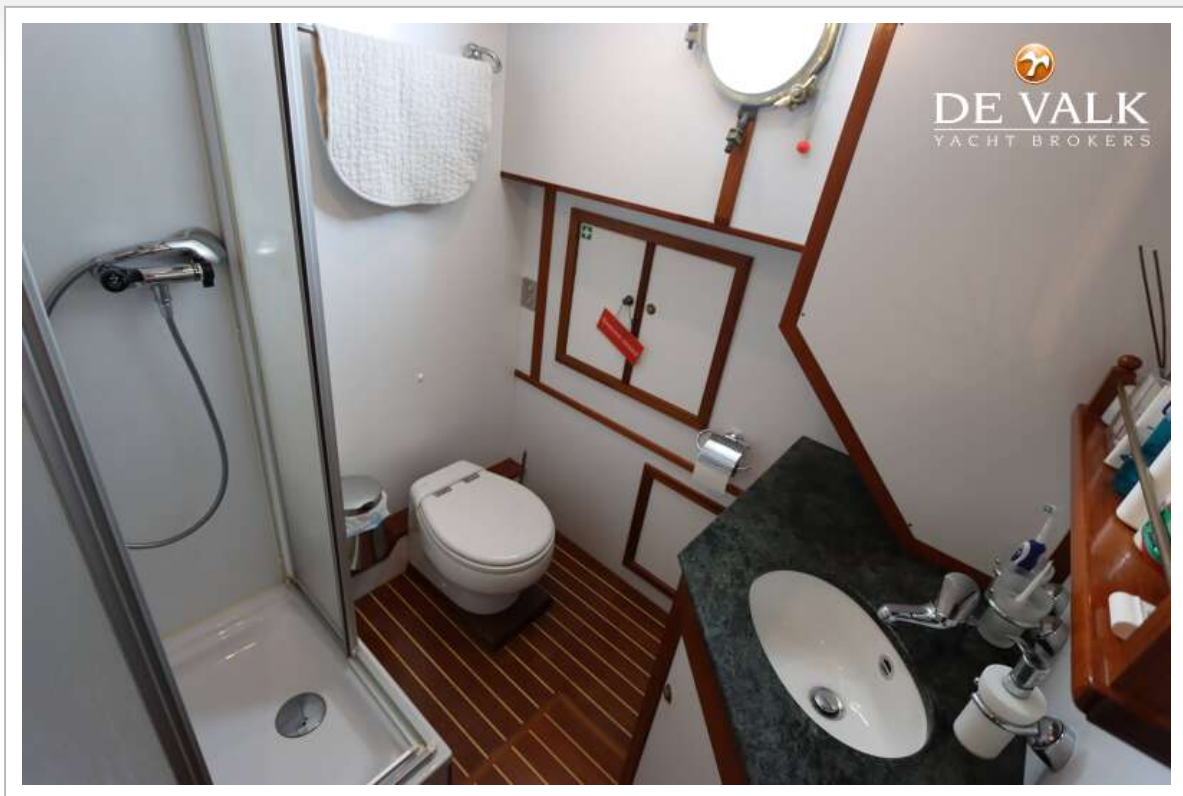
TRAWLER DUTCH BUILT



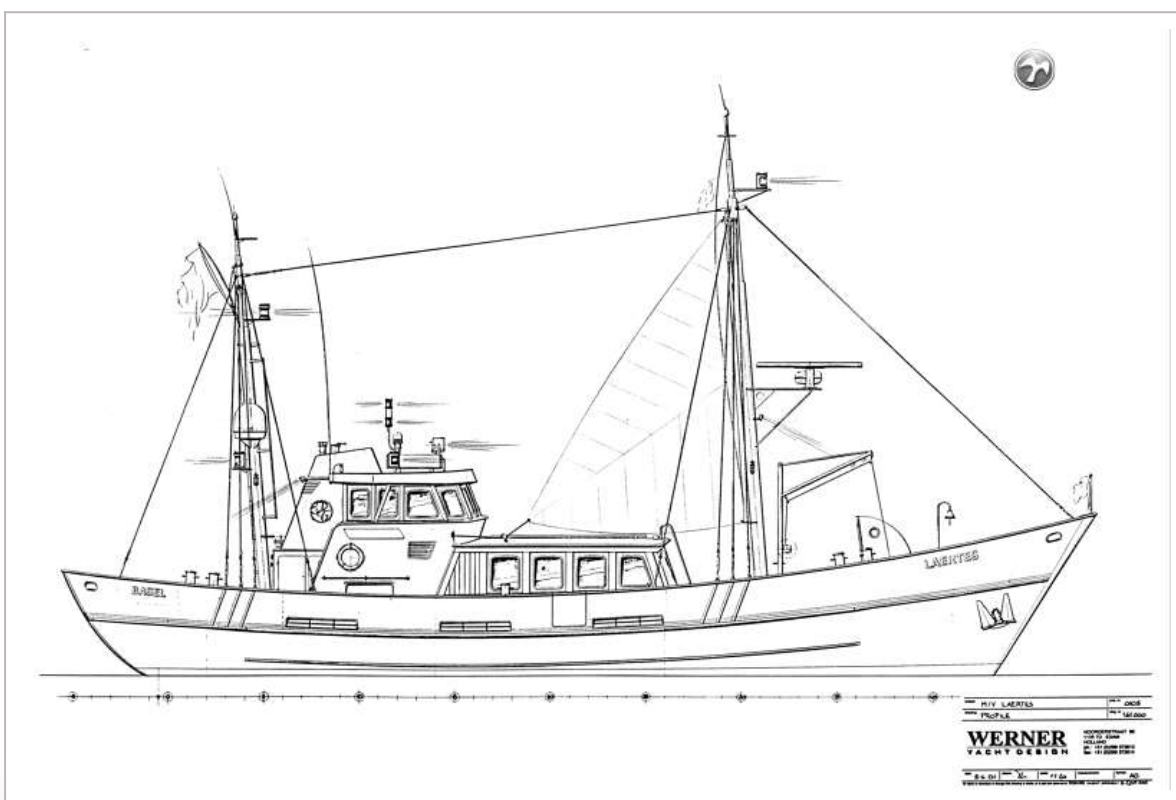
TRAWLER DUTCH BUILT



TRAWLER DUTCH BUILT



TRAWLER DUTCH BUILT



TRAWLER DUTCH BUILT

