



DE VALK  
YACHT BROKERS



BAVARIA 49.3



DE VALK  
YACHT BROKERS

BROKERAGE | CHARTER | BERTHS | FINANCE | INSURANCE | YACHT MANAGEMENT

## BROKER'S COMMENTS

This Bavaria 49.3 is in exceptionally good condition. It had one owner from new and she was originally sprayed dark blue Awlgrip. The paint system is still in very good condition. She is kitted-out very complete and absolute ready to go. It is a 3 cabin version with originally 3 heads. The starboard aft head has been rebuilt to a workshop / generator room and it also contains a washing machine. Some of the equipment: Bow thruster, in-mast furling, electric head sail furling, 3000 W inverter/charger, electric sheet winches, too much to count. check out and convince yourself. Dutch registered.

*John Venner*

## SPECIFICATIONS

<b>Dimensions</b>	15.40 x 4.56 x 2.10 (m)	<b>Builder</b>	Bavaria Yacht Bau GMBH Germany
<b>Built</b>	2004	<b>Cabins</b>	3
<b>Material</b>	GRP	<b>Berths</b>	8
<b>Engine(s)</b>	1 x Volvo Penta TMD22 diesel	<b>Hp/Kw</b>	76.00 (hp), 55.86 (kw)
<b>Asking price</b>	sold (VAT )	<b>Lying</b>	at sales office

## CONTACT

<b>Sales office</b>	De Valk Portugal	<b>Telephone</b>	+351 308 812321
<b>Address</b>	Edifício Administrativo - Ponta da Areia 8500 - 345 Portimão PT	<b>E-mail</b>	portugal@devalk.nl

## DISCLAIMER

These particulars are given in good faith as supplied but cannot be guaranteed.



## GENERAL

Model	BAVARIA 49.3
Type	sailing yacht
LOA (m)	15,40
LWL (m)	13,10
Beam (m)	4,56
Draft (m)	2,10
Year built	2004
Builder	Bavaria Yacht Bau GMBH Germany
Country	Germany
Designer	Japex / Jernej Jacopin
Displacement (t)	11
Ballast (tonnes)	3,9
CE norm	A
Hull material	GRP
Hull colour	blue
Hull shape	round-bilged
Keel type	fin keel
Superstructure material	GRP
Deck material	GRP
Deck finish	teak
Superstructure deck finish	teak
Cockpit deck finish	teak
Antifouling (year)	20/05/2015
Dorades	1
Window frame	aluminium
Window material	perspex
Deckhatch	7
Fuel tank (litre)	polyethylene 320 lt
Level indicator (fuel tank)	yes
Freshwater tank (litre)	polyethylene 650 lt



Level indicator (freshwater)	yes
Blackwater tank (litre)	80 lt
Level indicator (blackwater)	yes
Wheel steering	cable steering 2x
Outside helm position	cable steering
Emergency tiller	yes
More info on paintwork	AWL Grip Dark blue from new

## ACCOMMODATION

Cabins	3
Berths	8
Interior	mahogany
Floor	woodprint
Open cockpit	yes
Saloon	yes
Heating	diesel ducted hot air Webasto Airtop 5000
Air-conditioning	single cycle airco Coolmax CMC47M2CE
Navigation center	yes
Chart table	yes
Aft Cabin	2x
Dinette to convert into berth	yes
Galley	yes
Countertop	corian
Sink	stainless steel 2x
Cooker	calor gas
Oven	yes
Microwave	yes
Fridge	2x Isotherm
Freezer	Free standing
Hot water system	yes
Owners cabin	French bed



Wardrobe	yes
Bathroom	separate
Toilet	separate
Toilet system	manual
Wash basin	at the toilet
Shower	separate
Guest cabin 1	double bed
Wardrobe	yes
Bathroom	separate
Toilet	separate
Toilet system	manual
Wash basin	at the toilet
Shower	separate
Guest cabin 2	double bed
Wardrobe	yes
Washing machine	In generator room

## MACHINERY

No of engines	1
Make	Volvo Penta
Type	TMD22
HP	76,00
kW	55,86
Fuel	diesel
Year installed	2003
Maximum speed (kn)	8,5
Cruising speed (kn)	6,5
Consumption (l/hr)	5 l / hour
Engine hours	2693
Engine cooling system	freshwater heat exchanger
Drive	shaft



Engine controls	bowden cable
Gearbox	mechanical MS25A
Bowthruster	electric Side Power SP12ST
Propeller type	folding
Propeller blades	4
Propeller shaft material	stainless steel
Shaft lubrication	water
Manual bilge pump	yes
Electric bilge pump	yes
Generator	wet exhaust Whisper Power 3,5 kW
Running hours generator	180
Batteries	3x AGM 230 Ah
Start battery	1x Yellow Top 75 Ah
Generator battery	1x Yellow Top 75 Ah
Battery charger	Cristec CPS3 120Ah
Inverter	3000 W
Wind generator	Super Wind 35 Ah
Shorepower	yes
Watermaker	Modular Electron 60

## NAVIGATION

Compass	2x Plastimo Olympic 135
Depth sounder	Raymarine ST60 Multi
Log	Raymarine ST60 Multi
Windset	Raymarine ST60 including close hauled
VHF	Raymarine Ray 230E
VHF handheld	ICOM BC 166
Autopilot	Raymarine ST6001 + Lewmar drive
Radar	Raymarine
GPS	Raymarine and Magellan Path Finder Handheld
Plotter	yes



<b>Radar/plotter</b>	Raymarine RL72C
<b>Weather receiver</b>	Weather Infobox / Watcheye transponder + Box
<b>Navtex</b>	ICS Nav 6+
<b>Personal computer</b>	Renaud Combi Antenna WL510 Wifi Access System
<b>EPIRB</b>	Kanad

## EQUIPMENT

<b>Sprayhood</b>	yes
<b>Bimini</b>	yes
<b>Cockpit cushions</b>	Dark blue leather
<b>Cockpit table</b>	yes
<b>Boarding ladder</b>	stainless steel Intregrated in swim platform
<b>Deck shower</b>	yes
<b>Anchor</b>	CQR Plough Stainless Steel
<b>Anchor chain</b>	Galvanized 80 mt
<b>Windlass</b>	electrical
<b>Dinghy</b>	inflatable Honda Marine 3,5 m
<b>Davits</b>	stainless steel
<b>Sea railing</b>	stainless steel
<b>Railing side opening gates</b>	2x
<b>Pushpit</b>	yes
<b>Pulpit</b>	yes
<b>Life raft</b>	yes
<b>Life raft (pers)</b>	BFA 8 p.
<b>Last life raft survey</b>	Exp. 2016
<b>Lifejackets</b>	Marine Pool
<b>Safety harness</b>	Marine Pool / Compass
<b>Lifebuoy</b>	yes
<b>Radar reflector</b>	Flipper
<b>Fenders</b>	yes
<b>Mooring lines</b>	yes



TV	Lenco
DVD player	Philips
Fire extinguisher	Alfa - Exp. 2016

## RIGGING

Rigging	sloop
Standing rigging	wire
Brand mast	Seldén
Material mast	aluminium
Spreaders	yes
Mainsail	yes
Stoway mast	yes
Genoa	yes
Genoa furler	Furlex
A-symetric spi	Glider
Stormjib	yes
Reefing System	main in-mast furling
Boomvang	mechanical and tackle
Primary sheet winch	2x Harken 65ST Electric
Secondary sheet winch	yes
Halyard winches	2x Harken 48ST
Spinnaker winch	2x Harken 44ST







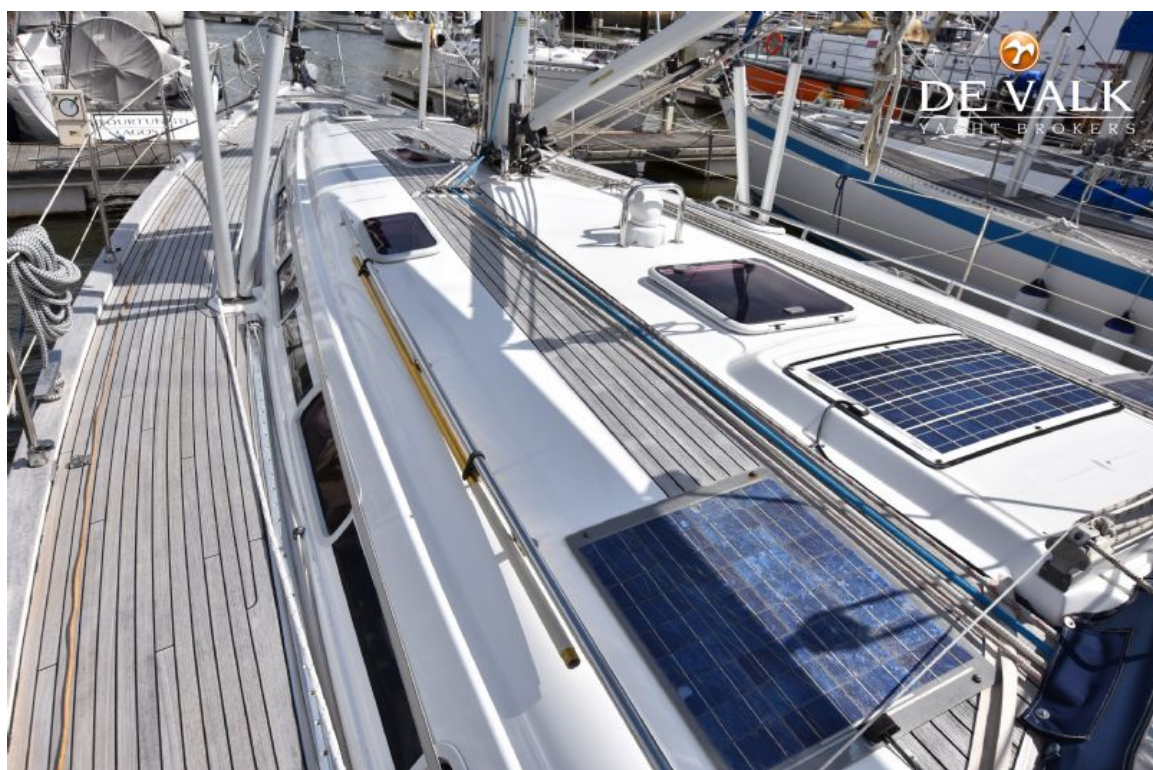


# BAVARIA 49.3





# BAVARIA 49.3





# BAVARIA 49.3





# BAVARIA 49.3



## BAVARIA 49.3





## BAVARIA 49.3



# BAVARIA 49.3





# BAVARIA 49.3



# BAVARIA 49.3





# BAVARIA 49.3



# BAVARIA 49.3

