



DE VALK  
YACHT BROKERS

## NORTHWIND 36



DE VALK  
YACHT BROKERS

# NORTHWIND 36

## BROKER'S COMMENTS

The Northwind 36 is a comfortable and safely designed centre cockpit bluewater cruiser for a reasonable price. This yacht can offer a small family a safe home during a circum-navigation. British SSR registered and VAT paid.

*John Venner*

## SPECIFICATIONS

|                     |                                 |                |                        |
|---------------------|---------------------------------|----------------|------------------------|
| <b>Dimensions</b>   | 10.82 x 3.65 x 1,75 / 2.04 (m)  | <b>Builder</b> | NORTHWIND SA           |
| <b>Built</b>        | 1985                            | <b>Cabins</b>  | 2                      |
| <b>Material</b>     | GRP                             | <b>Berths</b>  | 2                      |
| <b>Engine(s)</b>    | 1 x Mercedes 636 Inboard diesel | <b>Hp/Kw</b>   | 42.00 (hp), 30.87 (kw) |
| <b>Asking price</b> | sold (VAT )                     | <b>Lying</b>   | contact sales office   |

## CONTACT

|                     |   |                  |                    |
|---------------------|---|------------------|--------------------|
| <b>Sales office</b> | De Valk Portugal  | <b>Telephone</b> | +351 308 812321    |
| <b>Address</b>      | Edifício Administrativo - Ponta da Areia<br>8500 - 345 Portimão<br>PT | <b>E-mail</b>    | portugal@devalk.nl |

## DISCLAIMER

These particulars are given in good faith as supplied but cannot be guaranteed.



# NORTHWIND 36

## GENERAL

|                              |                     |
|------------------------------|---------------------|
| Model                        | NORTHWIND 36        |
| Type                         | sailing yacht       |
| LOA (m)                      | 10,82               |
| LWL (m)                      | 8,75                |
| Beam (m)                     | 3,65                |
| Draft (m)                    | 2,04                |
| Draft min (m)                | 1,75                |
| Year built                   | 1985                |
| Builder                      | NORTHWIND SA        |
| Country                      | Spain               |
| Designer                     | Bill Dixon          |
| Displacement (t)             | 7                   |
| Hull material                | GRP                 |
| Hull colour                  | red                 |
| Hull shape                   | round-bilged        |
| Superstructure material      | GRP                 |
| Deck material                | GRP                 |
| Deck finish                  | non-skid paint      |
| Fuel tank (litre)            | stainless steel 200 |
| Level indicator (fuel tank)  | yes                 |
| Freshwater tank (litre)      | stainless steel 350 |
| Level indicator (freshwater) | yes                 |
| Wheel steering               | cable steering      |

## ACCOMMODATION

|             |  |
|-------------|--|
| Cabins      | 2  |
| Berths      | 2  |
| Saloon      | L-Shaped settee berth to port / Double settee berth to starboard |
| Chart table | yes  |



# NORTHWIND 36

|                              |  |
|------------------------------|--|
| <b>Dinette</b>               | Table folds out making a large seating area accommodating 10 peo |
| <b>Galley</b>                | U-Shaped working area  |
| <b>Countertop</b>            | corian   |
| <b>Sink</b>                  | stainless steel  |
| <b>Cooker</b>                | calor gas 2 Burner gas stove with oven                           |
| <b>Oven</b>                  | yes  |
| <b>Extractor</b>             | Extractor fan  |
| <b>Fridge</b>                | yes  |
| <b>Freezer</b>               | 2 Ice boxes  |
| <b>Water pressure system</b> | Pressurized hot & cold water                                     |
| <b>Owners cabin</b>          | double bed Settee to port  |
| <b>Wardrobe</b>              | yes  |
| <b>Bathroom</b>              | en suite   |
| <b>Toilet</b>                | en suite   |
| <b>Toilet system</b>         | vacuum   |
| <b>Wash basin</b>            | in the bathroom  |
| <b>Shower</b>                | en suite   |
| <b>Guest cabin 1</b>         | v-bed Separate entrance for the forward toilet                   |
| <b>Wardrobe</b>              | yes  |
| <b>Bathroom</b>              | separate   |
| <b>Toilet</b>                | separate   |
| <b>Toilet system</b>         | vacuum   |
| <b>Wash basin</b>            | at the toilet  |
| <b>Shower</b>                | separate   |
| <b>Extra info</b>            | Separate entrances to forward cabin and main saloon              |

## MACHINERY

|                      |              |
|----------------------|--------------|
| <b>No of engines</b> | 1            |
| <b>Make</b>          | Mercedes 636 |
| <b>Type</b>          | Inboard      |



|                        |                        |
|------------------------|------------------------|
| <b>HP</b>              | 42,00                  |
| <b>kW</b>              | 30,87                  |
| <b>Fuel</b>            | diesel                 |
| <b>Engine hours</b>    | 1506                   |
| <b>Drive</b>           | shaft                  |
| <b>Batteries</b>       | yes                    |
| <b>Start battery</b>   | 1x Engine start (2013) |
| <b>Service battery</b> | 3x Domestic (2013)     |
| <b>Inverter</b>        | Sterling 25/2000 (new) |
| <b>Solar panel</b>     | 1x                     |

## NAVIGATION

|                      |   |
|----------------------|---|
| <b>Compass</b>       | Pedestal Plastimo Olympic 135           |
| <b>Depth sounder</b> | Echosounder Euromarine Stringray        |
| <b>Log</b>           | Log/Speed Stowe Navigator 2             |
| <b>Windset</b>       | Windspeed / Direction Stowe Navigator 2 |
| <b>VHF</b>           | Cobra Marine DSC                        |
| <b>Autopilot</b>     | Autohelm ST7000                         |
| <b>Radar</b>         | Furuno                                  |
| <b>GPS</b>           | Furuno GP32                             |
| <b>Navtex</b>        | Navtex NASA Target                      |

## EQUIPMENT

|                         |                 |
|-------------------------|-----------------|
| <b>Sprayhood</b>        | yes             |
| <b>Cockpit cushions</b> | yes             |
| <b>Boarding ladder</b>  | stainless steel |
| <b>Anchor</b>           | Danforth        |
| <b>Anchor chain</b>     | 50 mt           |
| <b>Anchor 2</b>         | Bruce           |
| <b>Anchor chain</b>     | 30 rope         |
| <b>Radar reflector</b>  | Furuno          |



|                   |     |
|-------------------|-----|
| Mooring lines     | yes |
| Fire extinguisher | 2x  |

## RIGGING

|                       |                          |
|-----------------------|--------------------------|
| Standing rigging      | wire Total insp. in 2012 |
| Mainsail              | yes                      |
| Genoa                 | yes                      |
| Spinnaker             | + pole                   |
| Primary sheet winch   | ENKES                    |
| Secondary sheet winch | ENKES                    |





# NORTHWIND 36





# NORTHWIND 36



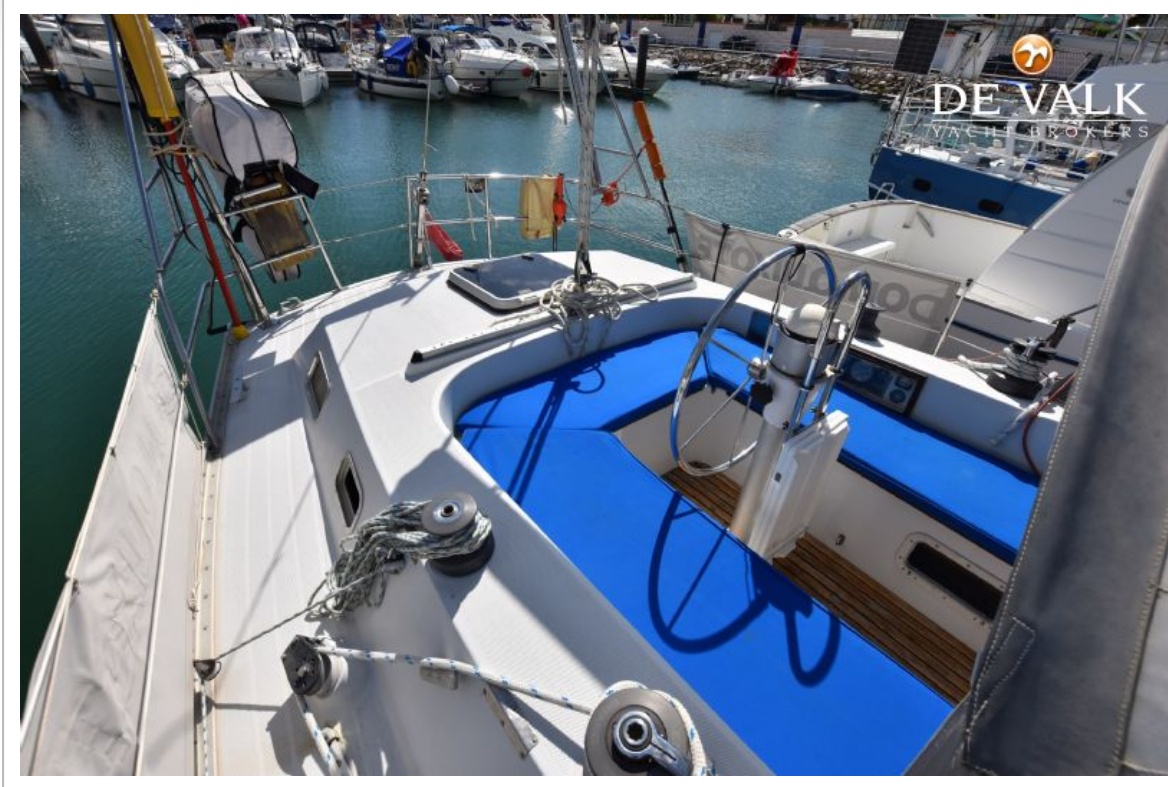


# NORTHWIND 36



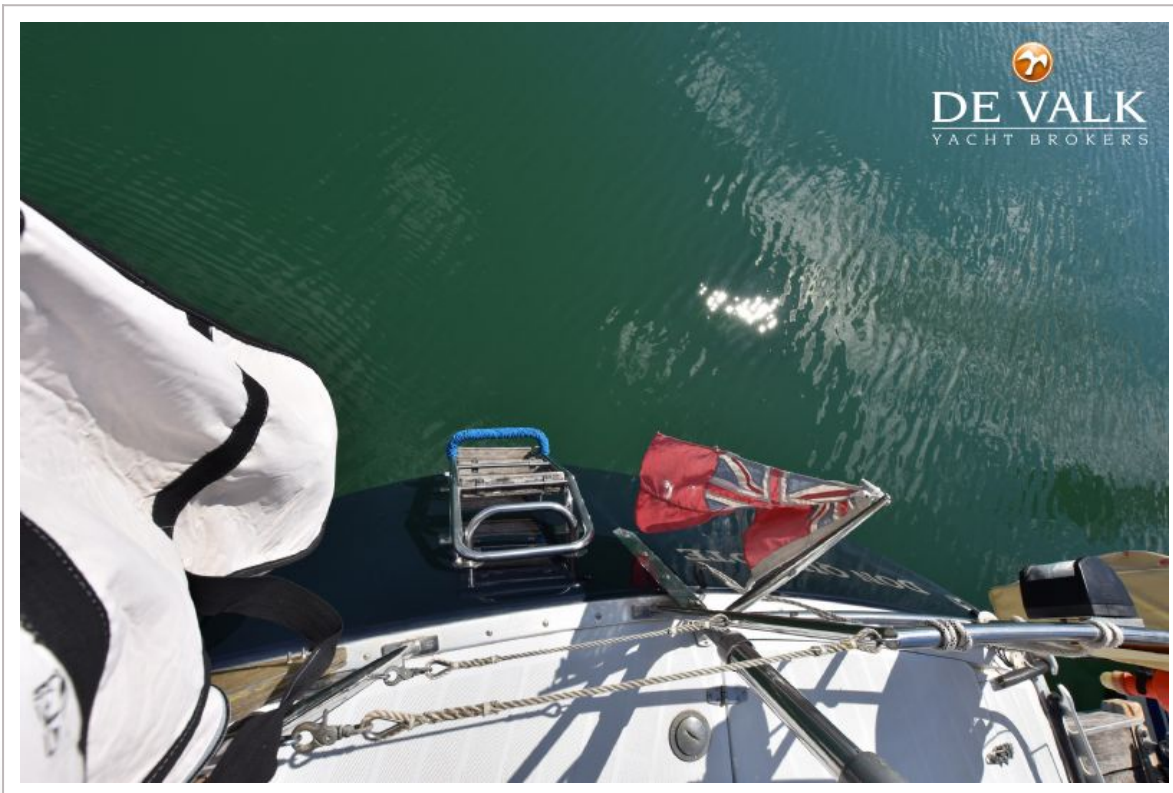


# NORTHWIND 36





# NORTHWIND 36





# NORTHWIND 36

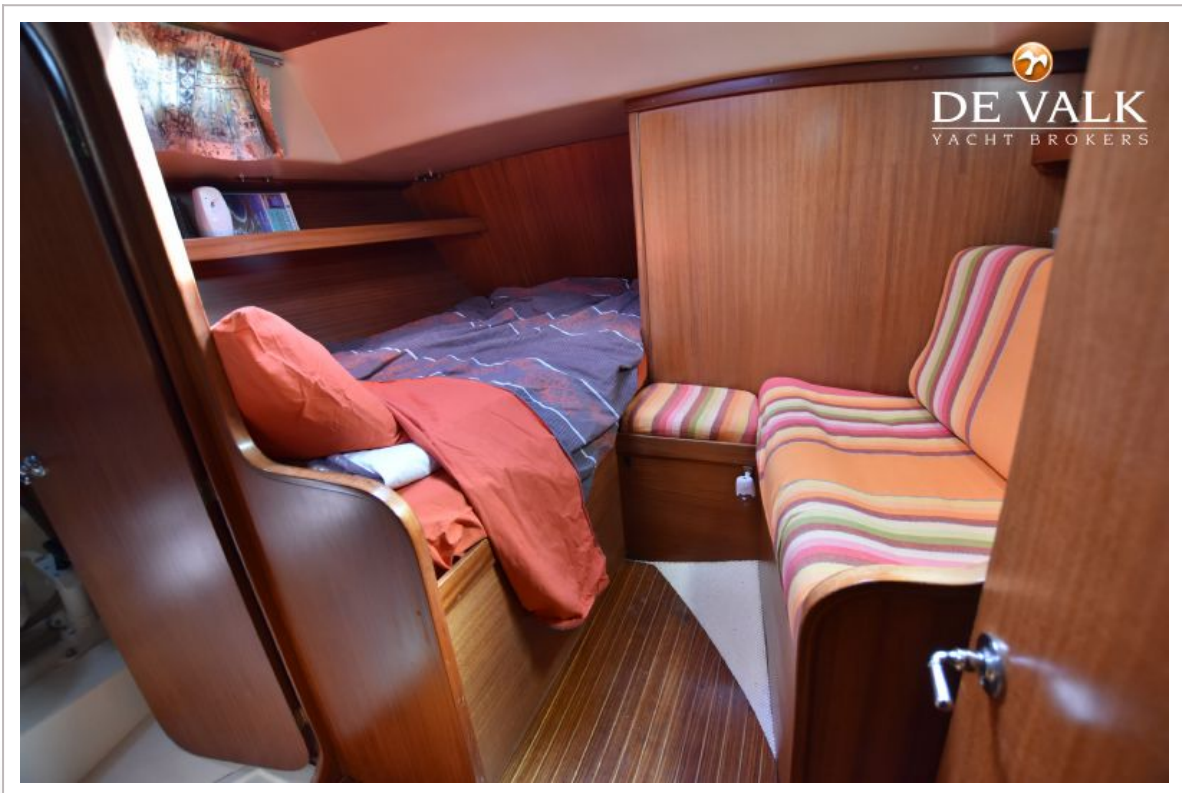




# NORTHWIND 36

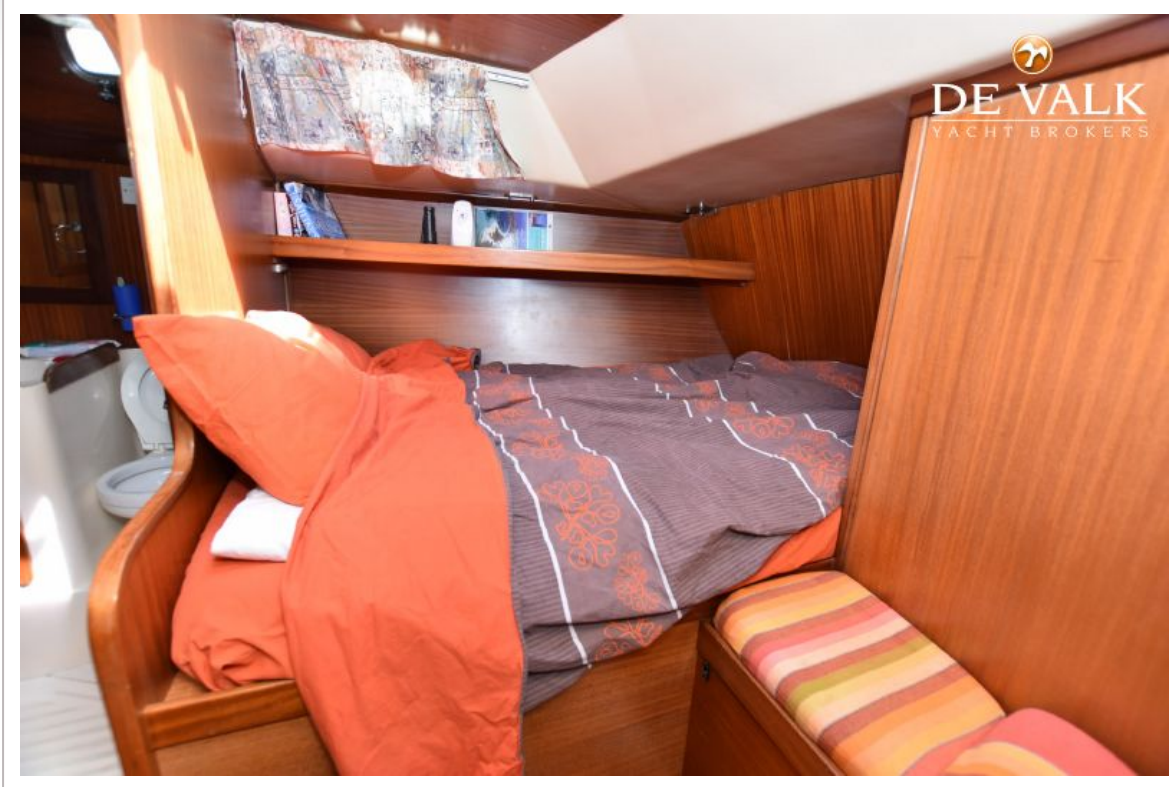


# NORTHWIND 36





# NORTHWIND 36



# NORTHWIND 36

