



RASBORA 14M

RASBORA 14M

BROKER'S COMMENTS

The Rasbora 14 multi chine steel schooner is in excellent condition. It always has been maintained with all loving care it needs. Completely repainted inside and outside, masts resprayed, new standing rigging. New navigation plotter and radar. This yacht is ready to go. A strong no-nonsense yacht that sails you safely around the world. Dutch registered, owned and VAT paid.

John Venner

SPECIFICATIONS

Dimensions	14.90 x 4.30 x 1.90 (m)	Builder	Ceilcon
Built	1984	Cabins	2
Material	Steel	Berths	4
Engine(s)	1 x Mitsubishi S6E2 6cyl diesel	Hp/Kw	105.00 (hp), 77.18 (kw)
Asking price	sold (VAT)	Lying	contact sales office

CONTACT

Sales office	De Valk Portugal	Telephone	+351 308 812321
Address	Edifício Administrativo - Ponta da Areia 8500 - 345 Portimão PT	E-mail	portugal@devalk.nl

DISCLAIMER

These particulars are given in good faith as supplied but cannot be guaranteed.



GENERAL

Model	RASBORA 14M
Type	sailing yacht
LOA (m)	14,90
Beam (m)	4,30
Draft (m)	1,90
Year built	1984
Builder	Ceilcon
Country	The Netherlands
Hull material	steel
Hull colour	white
Hull thickness (mm)	5
Hull shape	multi hard chine
Keel type	fin keel
Superstructure material	steel
Superstructure (mm)	3
Deck plate thickness (mm)	3
Deck material	steel
Deck finish	non-skid paint
Superstructure deck finish	non-skid paint
Cockpit deck finish	non-skid paint
Antifouling (year)	2017
Dorades	yes
Window frame	stainless steel
Window material	tempered glass
Deckhatch	yes
Portholes	
Insulation	foam
Fuel tank (litre)	1000
Freshwater tank (litre)	1600
Blackwater tank (litre)	50



Wheel steering	cable steering
Inside helm position	yes
Outside helm position	mechanical
More info on paintwork	Completed 2017

ACCOMMODATION

Cabins	2
Berths	4
Interior	mahogany Varnished in 2015 + new upholstrey 2015
Floor	wood
Aft deck	yes
Galley	yes
Countertop	marble
Sink	stainless steel
Cooker	induction 4 ring
Oven	Miele Electric
Microwave	yes
Fridge	yes
Freezer	Holding plate
Hot water system	Boiler when on shore power or generator
Water pressure system	
Crockery	China plates and bowls
Owners cabin	double bed
Bathroom	separate Aft
Toilet	
Wash basin	
Shower	
Bath tub	
Guest cabin 1	double bed Forward
Washing machine	yes



MACHINERY

No of engines	1
Make	Mitsubishi
Type	S6E2 6cyl
HP	105,00
kW	77,18
Fuel	diesel
Year installed	1984
Maximum speed (kn)	9
Cruising speed (kn)	7,5
Consumption (l/hr)	5
Engine cooling system	freshwater heat exchanger
Drive	shaft
Engine controls	bowden cable
Gearbox	mechanical Hurth HBW 400Z 2R
Propeller blades	3 bladed Stainless steel
Propeller shaft material	stainless steel
Shaft lubrication	grease
Manual bilge pump	yes
Electric bilge pump	3
Generator	230 V / 24V driven by main engine
Batteries	4x 110 V AMG
Start battery	2x 110 ah
Battery charger	1x24V, 1x 12V
Inverter	500W
Solar panel	4
Shorepower	

NAVIGATION

Compass	White Star riviera magnetic.
Electric compass	2x Cetrek for autopilot



Depth sounder	Garmin fish finder 100
Log	+ speed : Navman 3100
Windset	Navman 3150
VHF	Navman 7100 DSC
Autopilot	Cetrek with double displays
GPS	Furuno GP 32
Plotter	Simrad G3 with radar dome new 2016
Radar/plotter	Simrad G3
Navtex	Clipper

EQUIPMENT

Fixed windscreen	tempered glass
Cockpit cushions	New
Bathing platform	yes
Boarding ladder	steel
Gangway	yes
Anchor	70lb CQR
Anchor 2	45 lb CQR
Windlass	electrical Nilsson
Capstan	yes
Dinghy	Honwave
Outboard	3,5 HP
Deck crane	
Life raft	
Life raft (pers)	4
Lifejackets	4
Fenders	yes
Mooring lines	yes
Spare parts	Angle grinder, welding machine
Tools	2 Sanding Machines , heavy drill, jig saw, circular saw,
TV	yes



Clock - barometer

yes

Extra info

2 Complete sets of aqualung diving gear + suits (1x Female)

RIGGING

Rigging

schooner

Standing rigging

Replaced 2016

Material mast

aluminium coated Repainted 2016

Spreaders

Double

Mainsail

And schooner sail

Mainsail cover

yes

Genoa

yes

Genoa I

yes

Staysail

Self-tacking

Trysail

2016

Boomvang

mechanical and tackle 2x stainless steel

Primary sheet winch

2x Enkes 2 speed

Genoa sheetwinches

2x Enkes 2 speed

Halyard winches

3x Enkes 2 speed

Spi-pole

For a-symmetric kite 2011



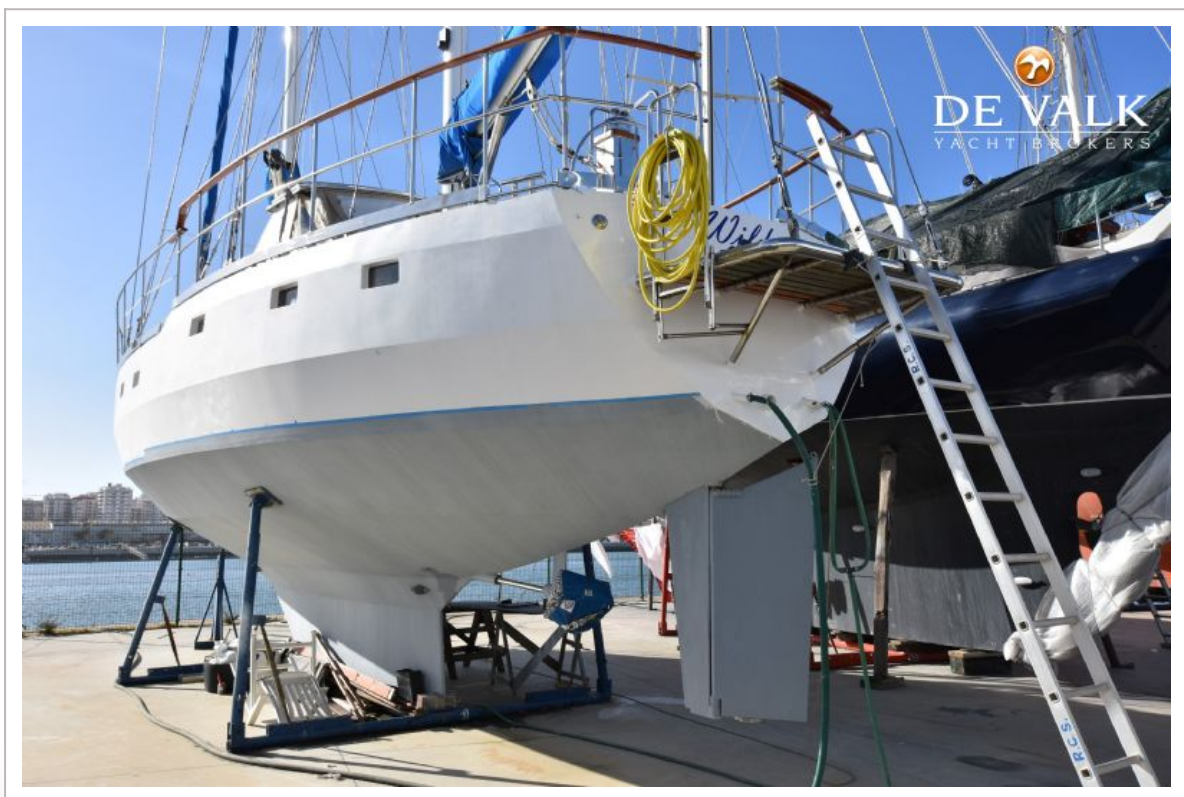
RASBORA 14M



RASBORA 14M



RASBORA 14M



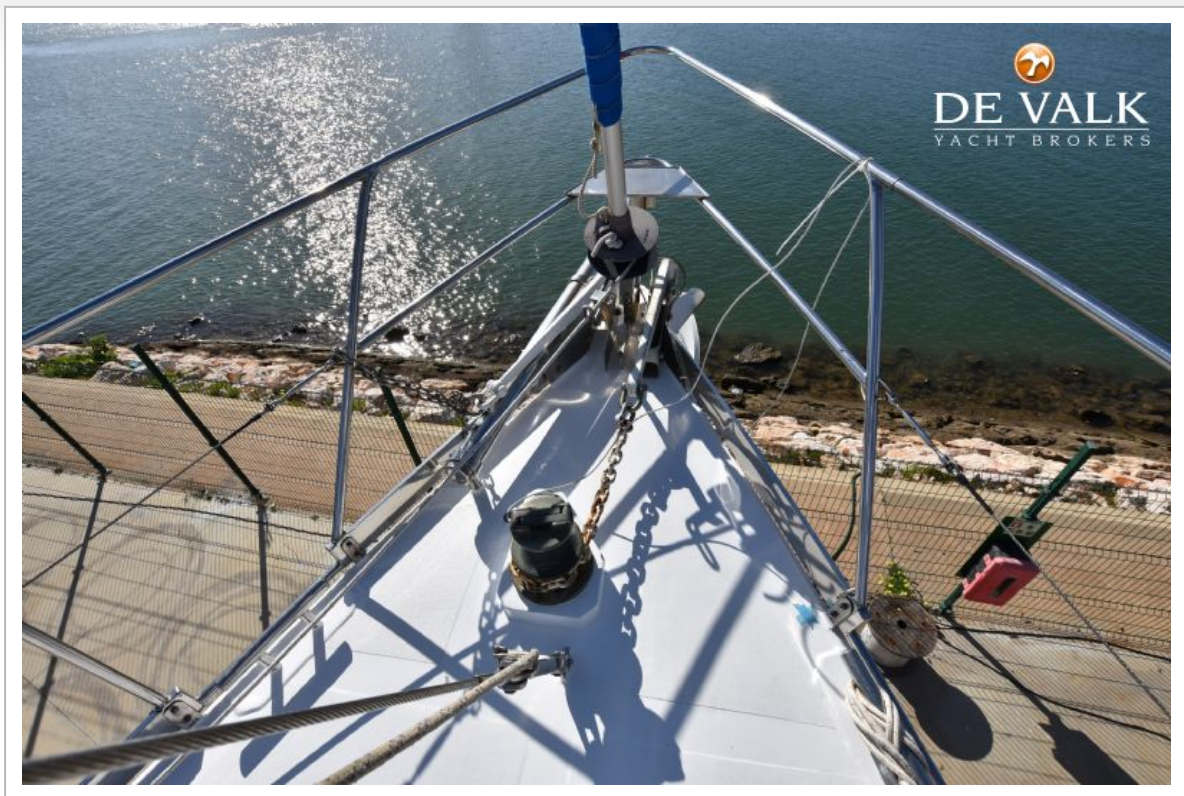
RASBORA 14M



RASBORA 14M



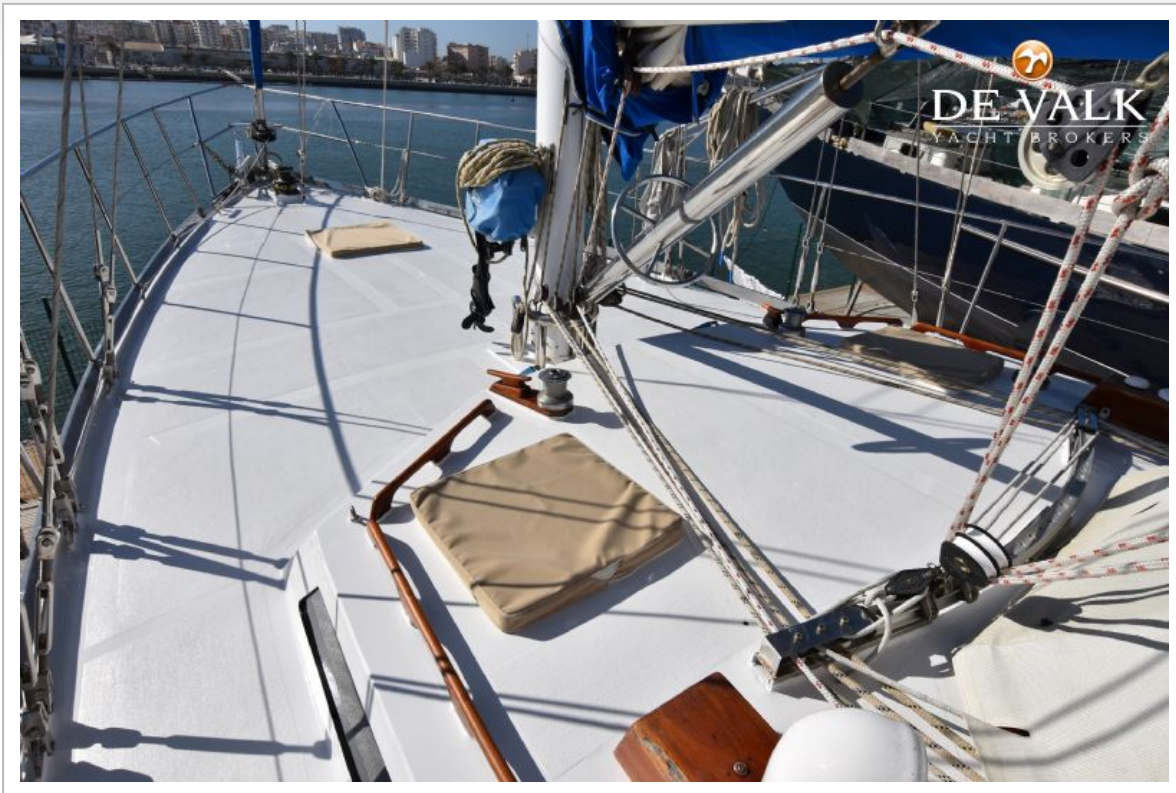
RASBORA 14M



RASBORA 14M



RASBORA 14M



RASBORA 14M



RASBORA 14M



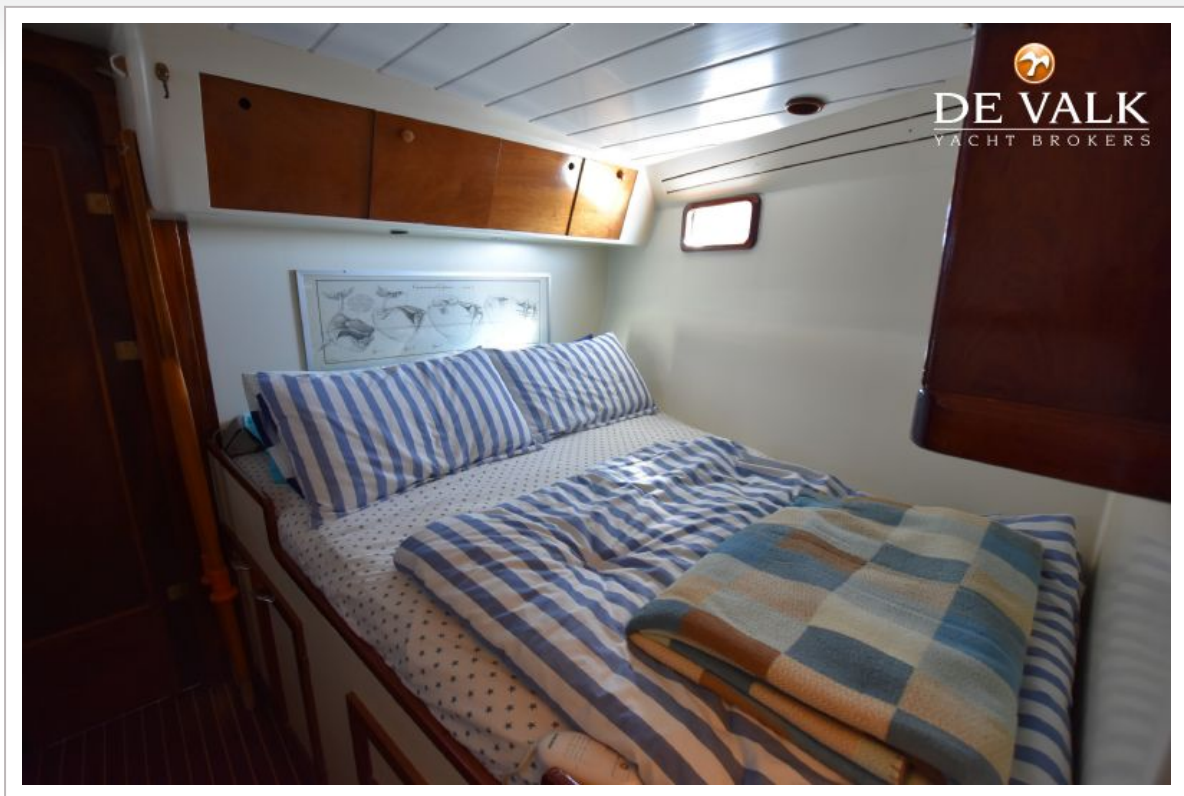
RASBORA 14M



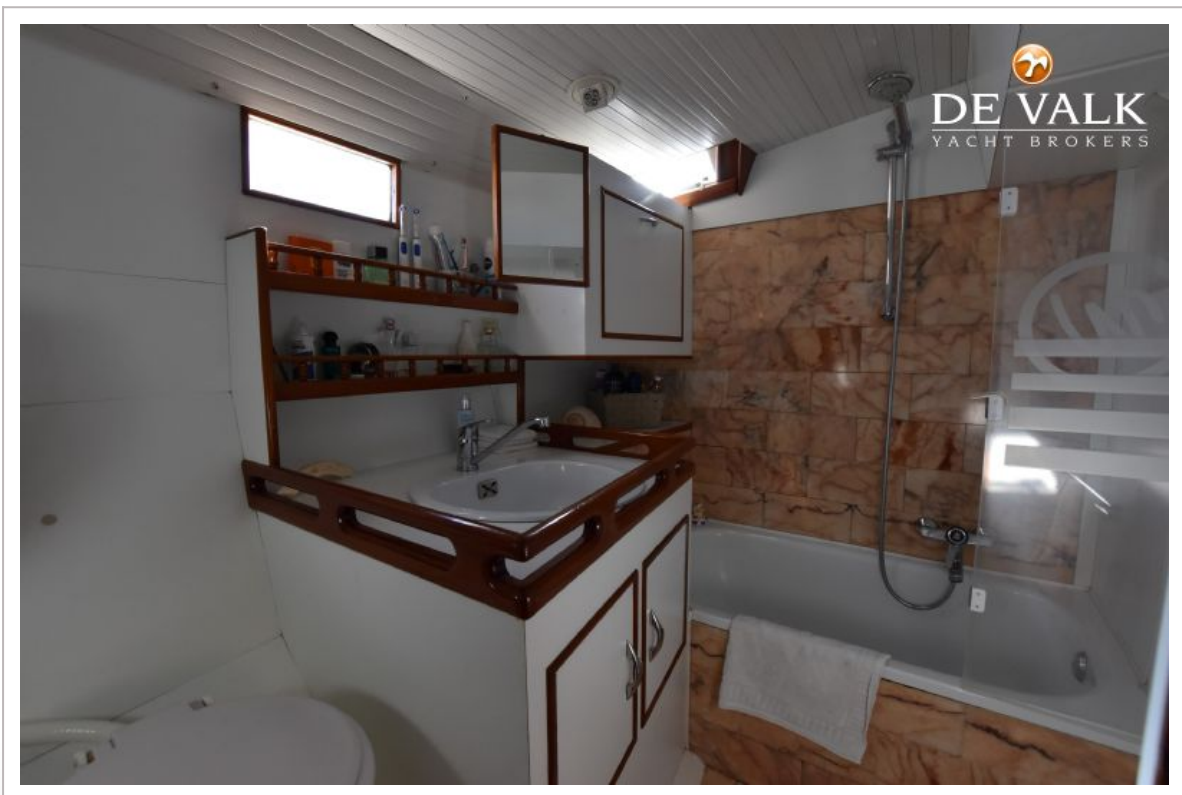
RASBORA 14M



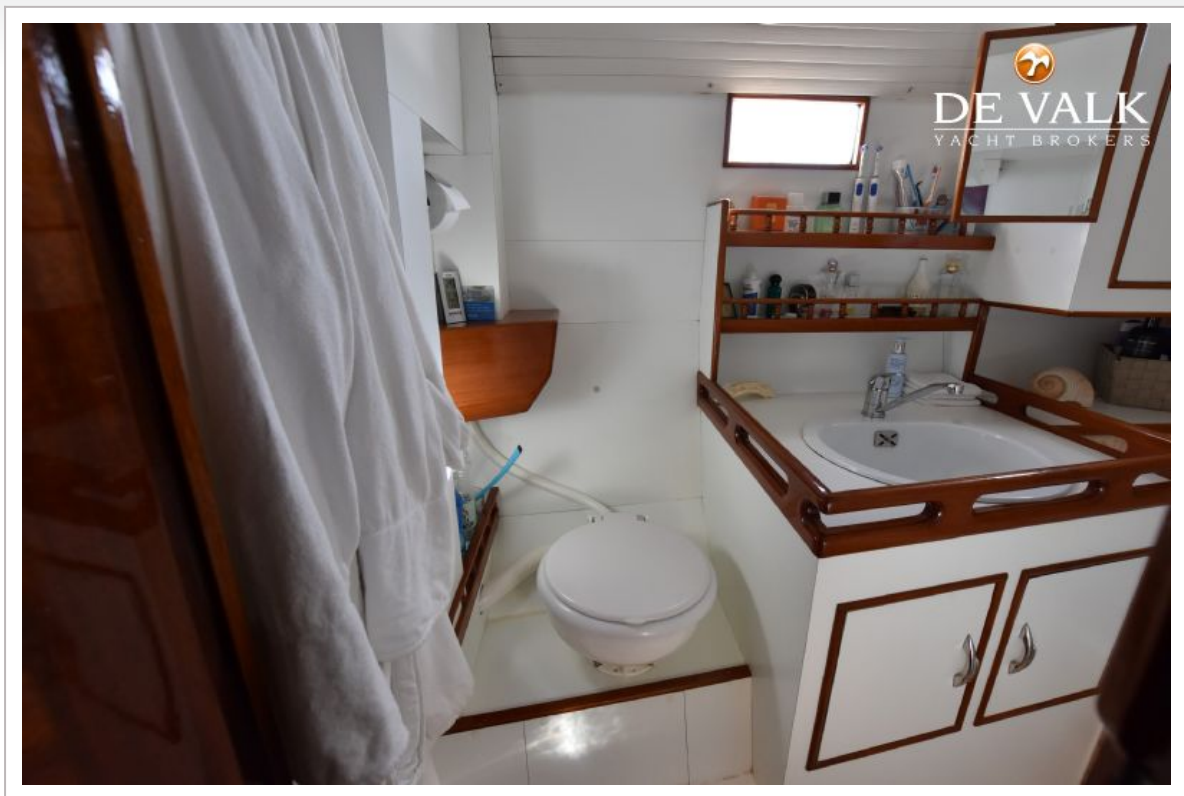
RASBORA 14M



RASBORA 14M



RASBORA 14M



RASBORA 14M



RASBORA 14M



RASBORA 14M

