



DE VALK  
YACHT BROKERS



## HALLBERG RASSY 34



DE VALK  
YACHT BROKERS

# HALLBERG RASSY 34

## BROKER'S COMMENTS

This German Frérs designed HR 34 is a very well maintained and complete yacht. It is absolute ready for cruising for a couple or small family. With her retractable fore stay and in-mast reefing main it is possible to sail safely in rough weather. UK registered and VAT paid.

*Reinoud Bicker Caarten*

## SPECIFICATIONS

<b>Dimensions</b>	10.28 x 3.42 x 1.85 (m)	<b>Builder</b>	Hallberg Rassy
<b>Built</b>	2000	<b>Cabins</b>	2
<b>Material</b>	GRP	<b>Berths</b>	6
<b>Engine(s)</b>	1 x Volvo Penta MD 2030 diesel	<b>Hp/Kw</b>	28.00 (hp), 20.58 (kw)
<b>Asking price</b>	sold (VAT )	<b>Lying</b>	contact sales office

## CONTACT

<b>Sales office</b>	De Valk Portugal	<b>Telephone</b>	+351 308 812321
<b>Address</b>	Edifício Administrativo - Ponta da Areia 8500 - 345 Portimão Portugal	<b>E-mail</b>	portugal@devalk.nl

## DISCLAIMER

These particulars are given in good faith as supplied but cannot be guaranteed.



# HALLBERG RASSY 34

## GENERAL

<b>Model</b>	HALLBERG RASSY 34
<b>Type</b>	sailing yacht
<b>LOA (m)</b>	10,28
<b>LWL (m)</b>	80,64
<b>Beam (m)</b>	3,42
<b>Draft (m)</b>	1,85
<b>Year built</b>	2000
<b>Builder</b>	Hallberg Rassy
<b>Country</b>	Sweden
<b>Designer</b>	Germán Frers
<b>Displacement (t)</b>	5300
<b>Ballast (tonnes)</b>	cast iron 2100 kg
<b>Net tonnage</b>	5300 kg
<b>Hull material</b>	GRP
<b>Hull colour</b>	white
<b>Hull shape</b>	round-bilged
<b>Keel type</b>	fin keel
<b>Superstructure material</b>	GRP
<b>Deck material</b>	GRP
<b>Deck finish</b>	teak
<b>Superstructure deck finish</b>	teak
<b>Cockpit deck finish</b>	teak
<b>Antifouling (year)</b>	new anodes and saildrive diaphragm Jan. 2020
<b>Window frame</b>	aluminium
<b>Window material</b>	tempered glass
<b>Deckhatch</b>	yes
<b>Fuel tank (litre)</b>	155
<b>Freshwater tank (litre)</b>	255
<b>Blackwater tank (litre)</b>	yes
<b>Wheel steering</b>	cable steering



# HALLBERG RASSY 34

Outside helm position	yes
Emergency tiller	yes

## ACCOMMODATION

Cabins	2
Berths	6
Interior	mahogany
Floor	teak and holly Carpet
Heating	diesel ducted hot air Webasto Airtop 3500
Chart table	yes
Galley	yes
Countertop	yes
Sink	yes
Cooker	calor gas 2-burner Optimus
Oven	yes
Fridge	yes
Hot water system	yes
Water pressure system	yes
Toilet	separate
Toilet system	manual
Wash basin	yes
Shower	separate

## MACHINERY

No of engines	1
Make	Volvo
Type	Penta MD 2030
HP	28
kW	20,58
Fuel	diesel
Maximum speed (kn)	6,5 Kn.



# HALLBERG RASSY 34

<b>Engine hours</b>	1000
<b>Drive</b>	sail-drive
<b>Engine controls</b>	bowden cable
<b>Gearbox</b>	mechanical
<b>Exhaust</b>	watercooled
<b>Propeller type</b>	folding 3 blade
<b>Propeller shaft material</b>	stainless steel
<b>Shaft lubrication</b>	water
<b>Manual bilge pump</b>	yes
<b>Electric bilge pump</b>	yes
<b>Batteries</b>	3x 85 Ah leisure 04-2014
<b>Battery charger</b>	Leab 12V 15A
<b>Wind generator</b>	Leading Edge LE300 300W ( 2013)
<b>Shorepower</b>	yes

## NAVIGATION

<b>Compass</b>	Suunto Binnacle
<b>Depth sounder</b>	Raymarine ST60
<b>Log</b>	Raymarine ST60
<b>Windset</b>	Raymarine ST60
<b>Repeater</b>	Raymarine ST60
<b>VHF</b>	Icom IC-M3230 DSC Radio (new 2016)
<b>Autopilot</b>	Raytheon ST4000+
<b>Radar</b>	Garmin 2000 from 2011
<b>GPS</b>	yes
<b>Navtex</b>	McMurdo Nav 6
<b>AIS receiver</b>	Euronav AI 3000

## EQUIPMENT

<b>Sprayhood</b>	2014
<b>Bimini</b>	2013



<b>Boarding ladder</b>	stainless steel
<b>Anchor</b>	CQR
<b>Anchor chain</b>	60 m x 8mm ( 2011 )
<b>Windlass</b>	electrical (Stainless steel
<b>Dinghy</b>	Seago 4 person
<b>Outboard</b>	Honda 2.3hp (2013)
<b>Life raft (pers)</b>	container 6 man
<b>Last life raft survey</b>	valid to Jan. 2023 Dec. 2019
<b>Lifejackets</b>	4x Kru automatic with safety lines inspected 04-2017
<b>Lifebuoy</b>	With light
<b>Danbuoy</b>	With light
<b>Safety lines on deck</b>	yes
<b>Radar reflector</b>	See-me active
<b>Fenders</b>	yes
<b>Mooring lines</b>	yes
<b>Radio-cd player</b>	Pioneer

## RIGGING

<b>Rigging</b>	sloop-cutter Retractable inner stay
<b>Standing rigging</b>	Replaced 2015
<b>Brand mast</b>	Seldén Seldén anodised aluminium twin spreader mast, boom and solid kic
<b>Material mast</b>	yes
<b>Mainsail</b>	In-mast with short vertical Battens ( Sanders 2008 )
<b>Stoway mast</b>	Vertical battens
<b>Cutterstay</b>	yes
<b>Genoa furler</b>	Genoa and spare ( Sanders 2008) Furlex 200S
<b>Genoa cover</b>	yes
<b>Removable innerforestay</b>	yes
<b>Stormjib</b>	yes
<b>Backstay adjuster</b>	2015



**Genoa sheetwinches**

2x Lewmar ST44

**Multifunctional winches**

2x Lewmar ST16

**Spi-pole**

yes



# HALLBERG RASSY 34





# HALBERG RASSY 34



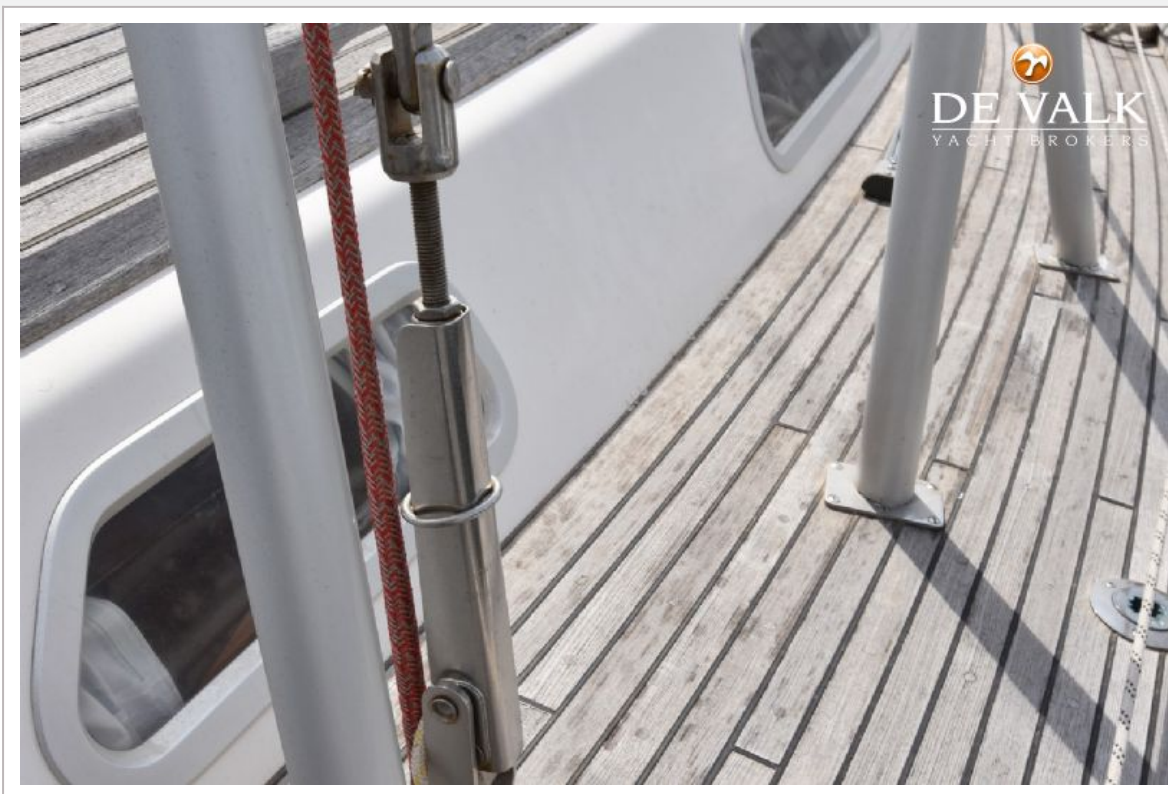
# HALBERG RASSY 34



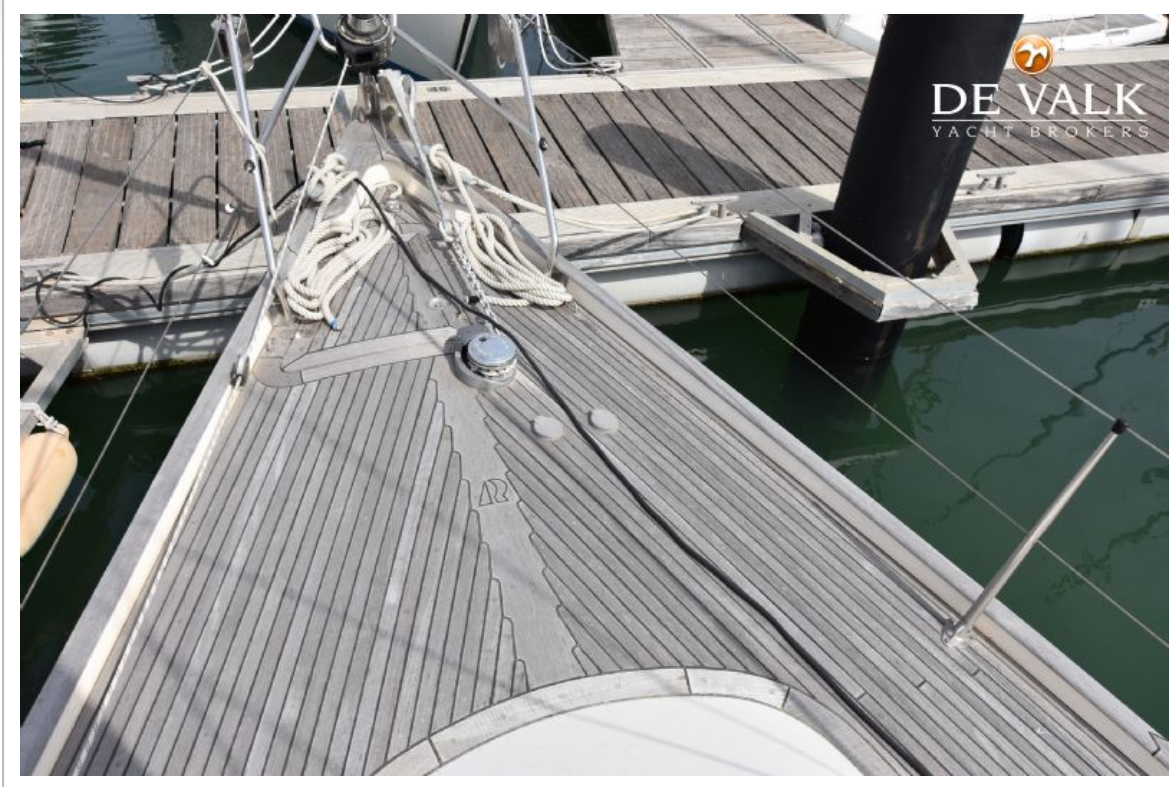
# HALLBERG RASSY 34



# HALLBERG RASSY 34



# HALLBERG RASSY 34



# HALBERG RASSY 34



# HALLBERG RASSY 34



# HALLBERG RASSY 34





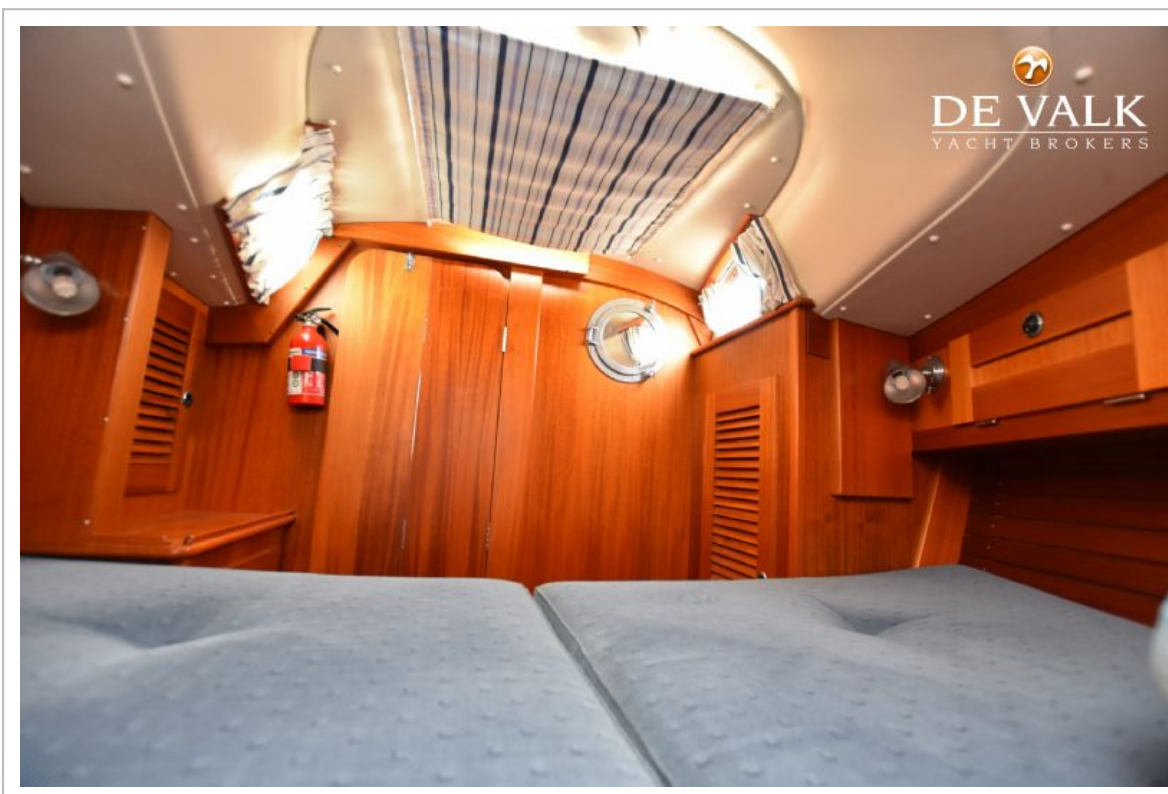
# HALLBERG RASSY 34



# HALLBERG RASSY 34



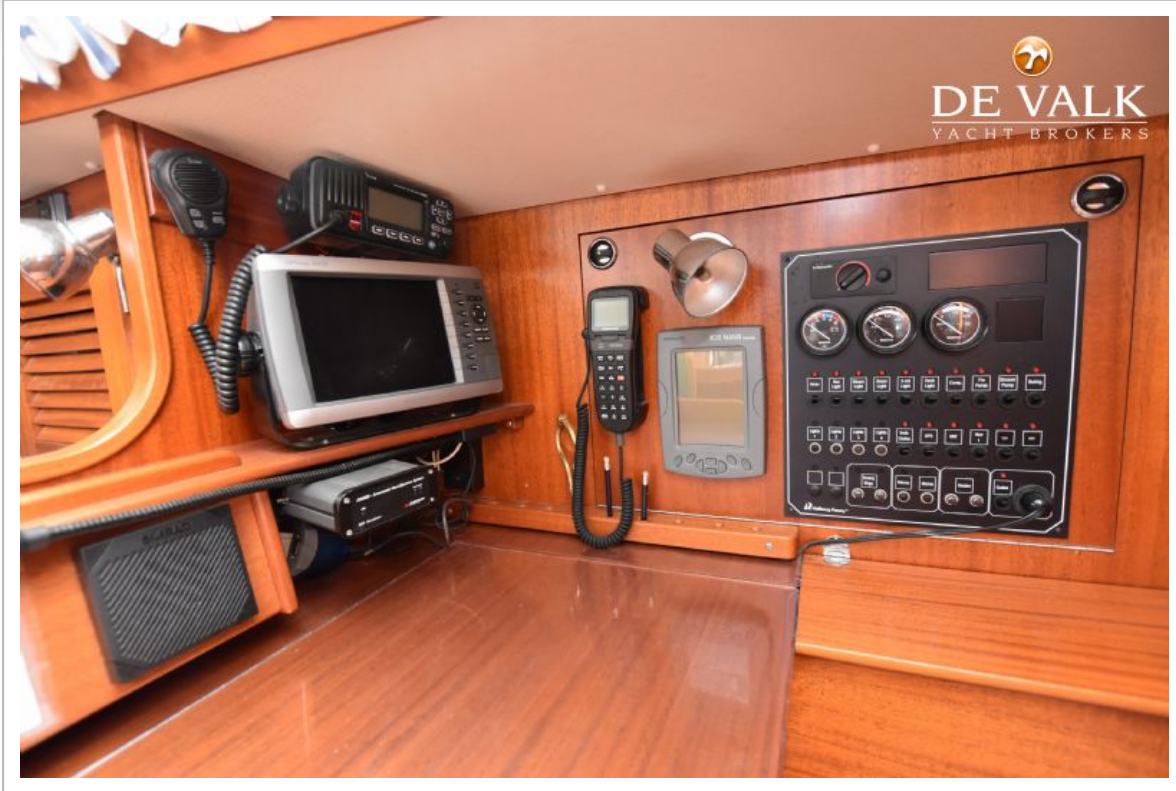
# HALLBERG RASSY 34



# HALLBERG RASSY 34



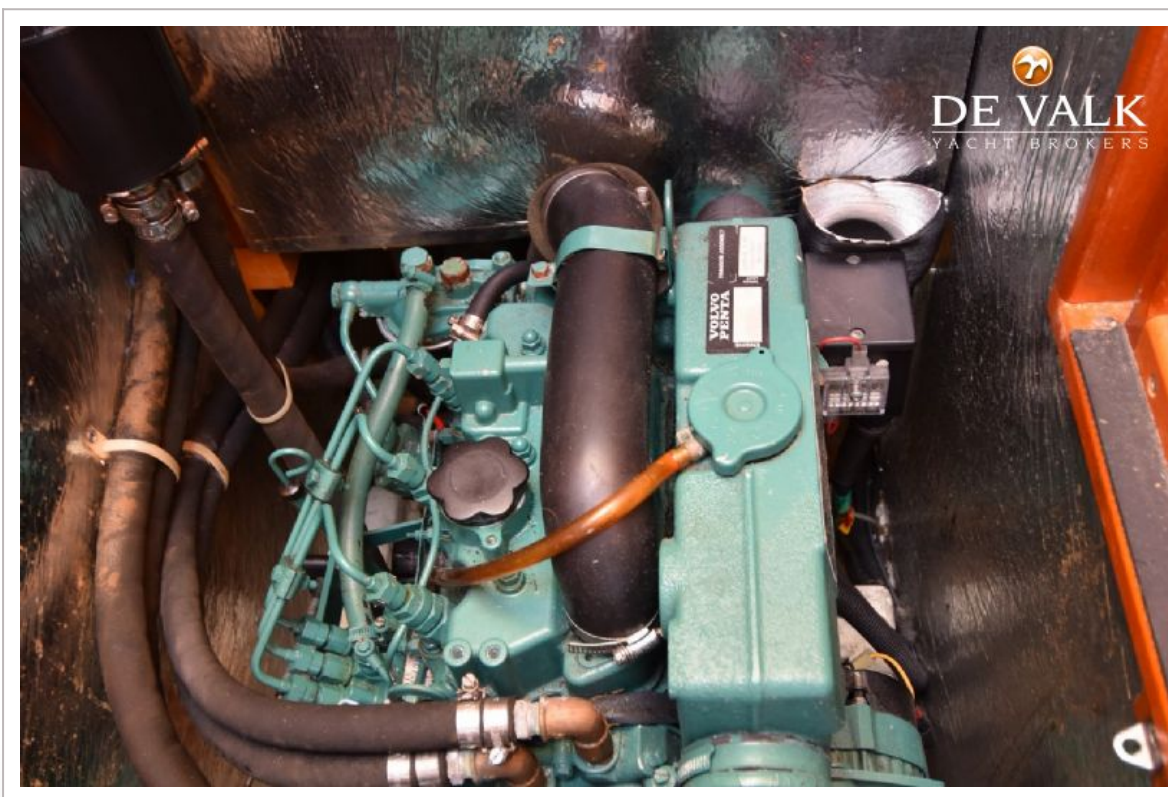
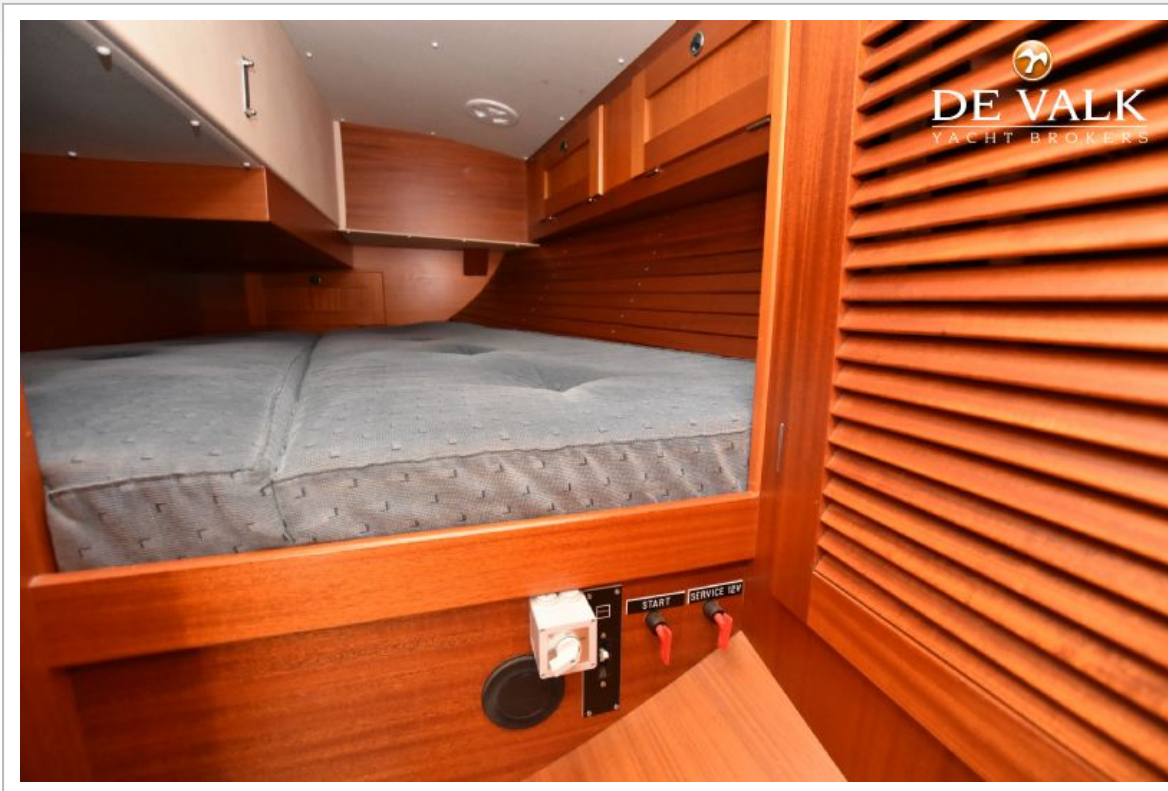
# HALLBERG RASSY 34



# HALLBERG RASSY 34



# HALLBERG RASSY 34



# HALLBERG RASSY 34

