



DE VALK
YACHT BROKERS

REEFCAT 56 DIVE



DE VALK
YACHT BROKERS

REEFCAT 56 DIVE

BROKER'S COMMENTS

A 17m foiling powercat fully equipped for diving expeditions for up to 12 persons or 25 passengers. This fast cat was only used for a few expeditions and short day trips. The engines were completely overhauled in 2015 and have been used for short trips locally since then. Accommodation for 12 passengers in 2 cabins with 4 single berths and 2 cabins with twin berths+2 crew cabins. A spacious saloon with panoramic views, dinette and galley. A TV, DVD and MP3/CD player with speakers. Large sundeck with mattresses on the bow. Diving equipment: on board compressor Bauer Mariner with mixing panel.

Reinoud Bicker Caarten

SPECIFICATIONS

Dimensions	17.00 x 5.30 x 1,20 / 1.40 (m)	Builder	Nautiber
Built	2008	Cabins	4
Material	GRP	Berths	12
Engine(s)	2 x Scania DI 12 66M diesel	Hp/Kw	2 x 650.00 (hp), 477.00 (kw)
Asking price	sold (VAT)	Lying	at sales office

CONTACT

Sales office	De Valk Portugal	Telephone	+351 308 812321
Address	Edifício Administrativo - Ponta da Areia 8500 - 345 Portimão PT	E-mail	portugal@devalk.nl

DISCLAIMER

These particulars are given in good faith as supplied but cannot be guaranteed.



REEFCAT 56 DIVE

GENERAL

Model	REEFCAT 56 DIVE
Type	Catamaran motor yacht
LOA (m)	17,00
LWL (m)	15,35
Beam (m)	5,30
Draft (m)	1,40
Draft min (m)	1,20
Air draft (m)	8,80
Headroom (m)	2,00
Year built	2008
Builder	Nautiber
Country	Portugal
Designer	Nautiber
Displacement (t)	22
CE norm	B
Hull material	GRP
Hull colour	off-white
Superstructure material	GRP
Rubbing strake	rubber
Deck material	GRP
Deck finish	non-skid paint
Superstructure deck finish	non-skid paint
Cockpit deck finish	Vinil
Antifouling (year)	2018
Window frame	aluminium
Window material	tempered glass
Deckhatch	4x
Insulation	airfoil
Fuel tank (litre)	stainless steel 2x 1900L
Fuel tank 2 (litre)	yes



REEFCAT 56 DIVE

Level indicator (fuel tank)	yes
Freshwater tank (litre)	2x 410L
Level indicator (freshwater)	yes
Blackwater tank (litre)	215L
Level indicator (blackwater)	yes
Blackwater tank extraction	yes
Wheel steering	yes
Inside helm position	yes
More info on hull	Fitted with hydrofoils

ACCOMMODATION

Cabins	4
Berths	12
Crew cabin	2
Crew berths	3
Floor	anti-slip Vinyl
Aft deck	yes
Pilot house	yes
Saloon	yes
Headroom saloon (m)	2m
Heating	diesel ducted hot air
Air-conditioning	reverse cycle airco
Navigation center	yes
Chart table	yes
Dining room	yes
Opening door to aft deck	yes
Galley	yes
Countertop	yes
Sink	yes
Cooker	yes
Extractor	yes



REEFCAT 56 DIVE

Gas alarm	yes
Microwave	yes
Fridge	yes
Freezer	yes
Hot water system	yes
Water pressure system	electrical 2x
Manual and/or foot pump	yes
Dishwasher	yes
Kettle	yes
Coffee maker	yes
Crockery	yes
Bathroom	separate 2x 1on each side
Toilet	yes
Toilet system	yes
Wash basin	yes
Shower	yes
Guest cabin 1	4x single beds
Bed length (m)	1,95m
Wardrobe	shelves 4 closets
Guest cabin 2	4 single beds
Bed length (m)	1,95m
Wardrobe	4 closets
Guest cabin 3	twin single 2single beds
Bed length (m)	1,95m
Wardrobe	Closets
Guest cabin 4	twin single 2x single beds
Bed length (m)	1,95m
Wardrobe	shelves 2 closets
Crew cabin(s)	2x with 1 bed
Washing machine	yes
Wet bar	yes



MACHINERY

No of engines	2
Make	Scania
Type	DI 12 66M
HP	650,00
kW	477,00
Fuel	diesel
Year installed	2008
Year of overhaul	2015
Maximum speed (kn)	25,00
Cruising speed (kn)	18,00
Consumption (l/hr)	80,00
Range (nm)	425
Engine hours	450
Engine cooling system	seawater
Drive	shaft
Engine controls	electrical & bowden cable
Gearbox	hydraulic ZF 325 IV
Propeller type	fixed D:750mm P:918mm
Propeller blades	bronze 4
Propeller shaft material	stainless steel
Shaft lubrication	water
Manual bilge pump	yes
Electric bilge pump	yes
Bilge alarm	yes
Electrical installation	24v
Generator	2x Fisher Panda PMS 24NE
Running hours generator	2000
Batteries	8x
Start battery	4
Service battery	4



Battery monitor	yes
Battery charger	yes
Inverter	yes
Shorepower	yes
Auto positioning system	AIS
Watermaker	1700L /24hrs
Stabilizers	yes

NAVIGATION

Compass	yes
Compass on flybridge	yes
Electric compass	yes
Depth sounder	yes
Log	Raymarine E120 2x
Windset	Raymarine Tridata ST60
Fish finder	yes
VHF	yes
VHF handheld	yes
Autopilot	with S3G pilot pack Raymarine Pilot command ST8002
Radar	yes
GPS	Raymarine RS125
Radar/GPS/plotter	Raymarine E120
Weather receiver	McMurdo active antenna
Navtex	Mc Murdo ICS NAV7
Electronic chart(s)	yes
AIS receiver	yes
AIS transponder	yes
Radio receiver	yes
Transmitter	yes
EPIRB	Valid 2021
Personal MOB transmitter	Raymarine lifetag



REEFCAT 56 DIVE

Camera	yes
Navigation lights	yes
Searchlight	yes
Extra info	Seamarsshall diver location system

EQUIPMENT

Bathing platform	yes
Boarding ladder	stainless steel
Deck shower	Warm water
Anchor	CQR Plough
Anchor chain	yes
Windlass	yes
Deck wash	yes
Dinghy	rigid inflatable Narwhal 400R
Outboard	Honda 20HP
Outboard support	yes
Deck crane	yes
Sea railing	yes
Grab rail (superstructure)	yes
Railing side opening gates	yes
Pushpit	yes
Pulpit	yes
Life raft	container
Life raft (pers)	25
Last life raft survey	2019
Lifejackets	18
Lifebuoy	yes
Wiper	yes
Horn	yes
Radar reflector	yes
Fenders	yes



REEFCAT 56 DIVE

Mooring lines	yes
Alarm system	yes
TV	yes
TV receiver	yes
Satellite	yes
Radio-cd player	yes
DVD player	yes
iPod connection	yes
Surround Sound System	yes
Speakers in salon	yes
Speakers in cabin	yes
Fire extinguisher	6
Latest extinguisher survey	2018
Extinguisher in engine room	yes
Auto extinguisher system	yes



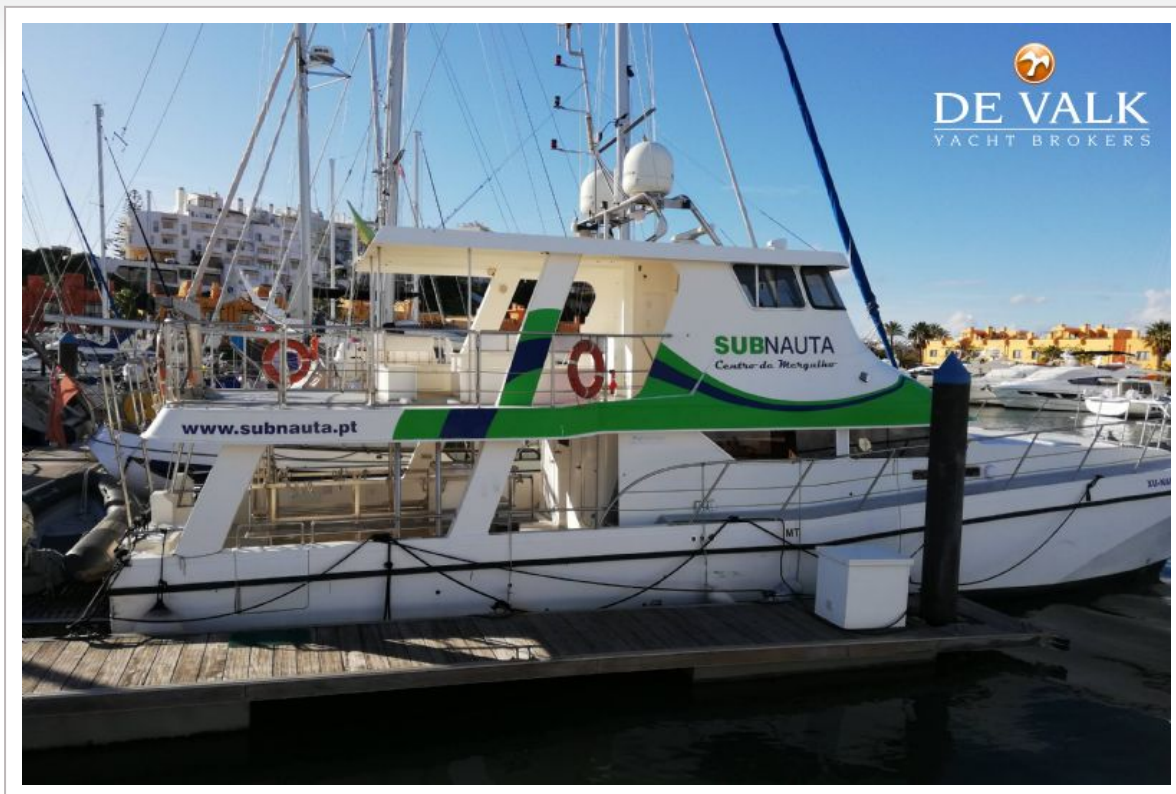
REEFCAT 56 DIVE



REEFCAT 56 DIVE



REEFCAT 56 DIVE



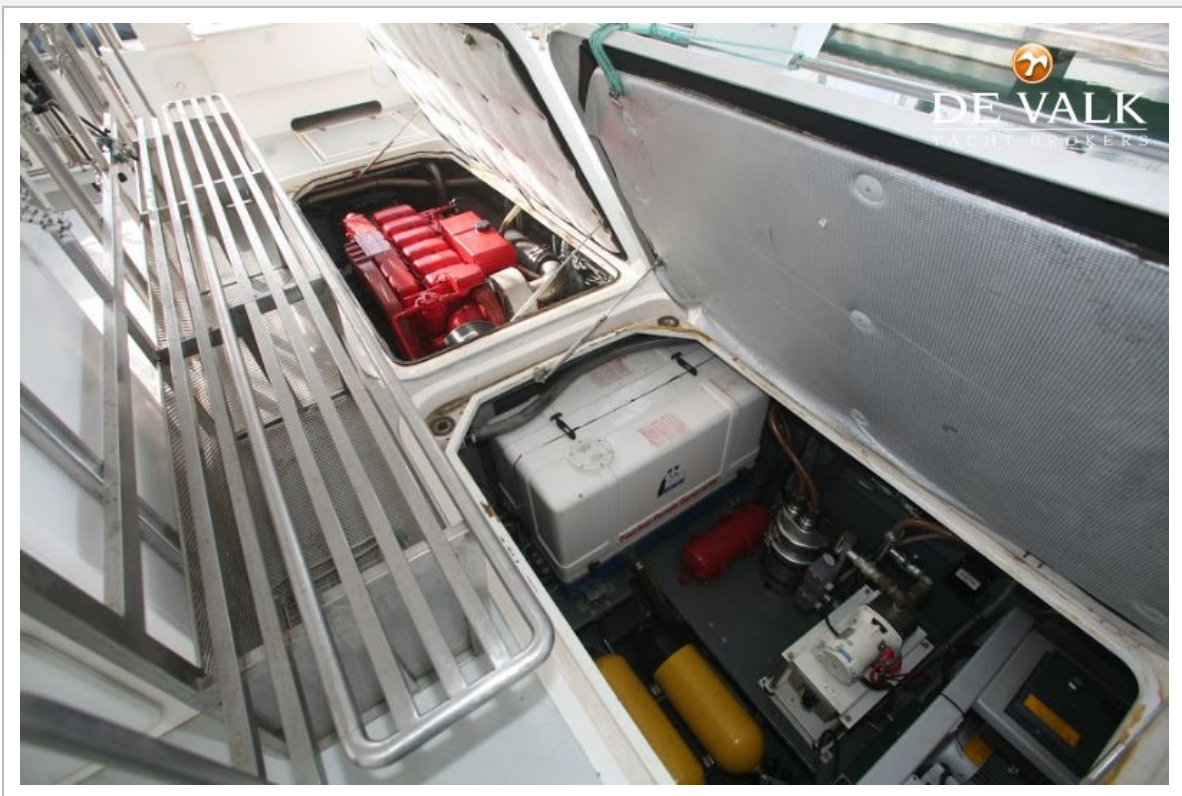
REEFCAT 56 DIVE



REEFCAT 56 DIVE



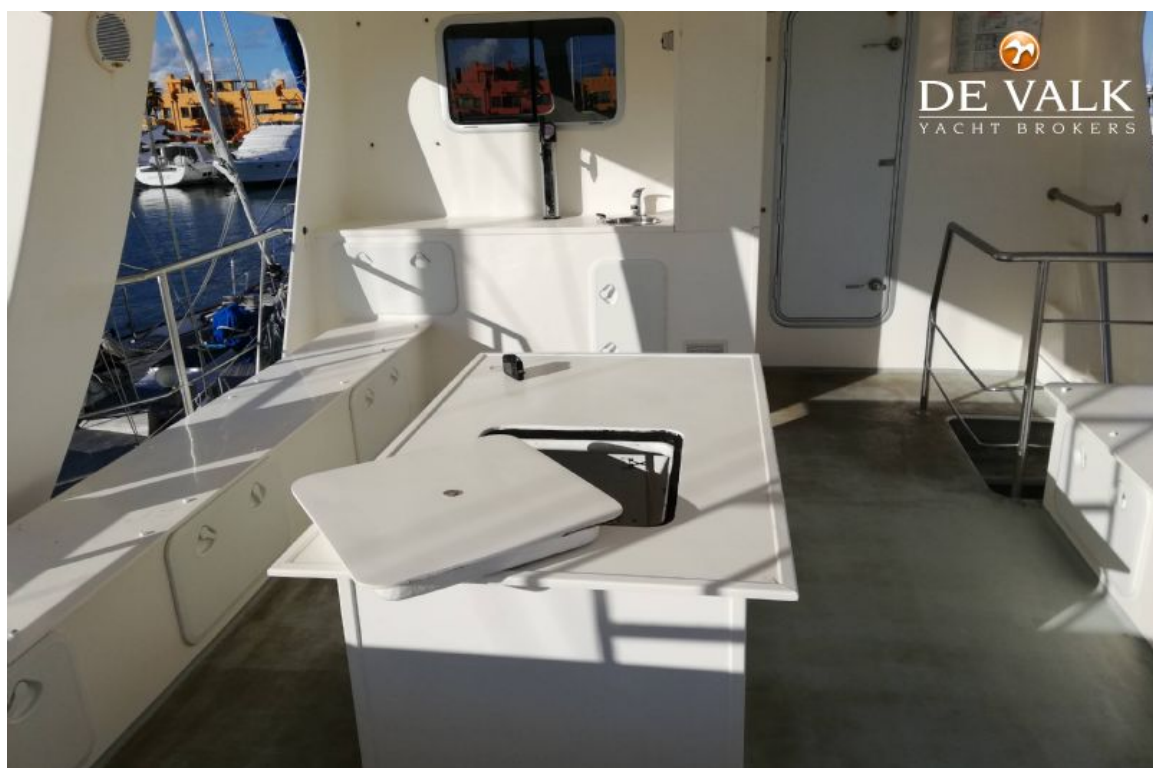
REEFCAT 56 DIVE



REEFCAT 56 DIVE



REEFCAT 56 DIVE



REEFCAT 56 DIVE



REEFCAT 56 DIVE



REEFCAT 56 DIVE



REEFCAT 56 DIVE



REEFCAT 56 DIVE



REEFCAT 56 DIVE



REEFCAT 56 DIVE



