



BLOEMSMA MIRESSSE 56



BROKER'S COMMENTS

A beautiful classic Ketch designed by Bekebrede, Bloemsma built with a very high quality Anne Wever interior. Offered by the first owner who kept her in perfect condition all this time. She was built to specifications for long blue water crossings, sailing the 7 seas in comfort and safety. With the 4 waterlocks she has 5 watertight compartments making her very safe in case of a collision. All the sails are furling so reducing sail area can be done quick and easy. She can be handled by a 2 person crew on deck. Perfect for the sailor with an ambition to do long blue water passages.

Reinoud Bicker Caarten

SPECIFICATIONS

Dimensions	17.20 x 4.90 x 1,50 / 3.00 (m)	Builder	Bloemsma / Anne Wever
Built	1988	Cabins	4
Material	Steel	Berths	10
Engine(s)	1 x Ford Lehman SP 135 diesel	Hp/Kw	135.00 (hp), 99.22 (kw)
Asking price	sold (VAT)	Lying	at sales office

CONTACT

Sales office	De Valk Portugal	Telephone	+351 308 812321
Address	Edifício Administrativo - Ponta da Areia 8500 - 345 Portimão PT	E-mail	portugal@devalk.nl

DISCLAIMER

These particulars are given in good faith as supplied but cannot be guaranteed.



GENERAL

Model	BLOEMSMA MIRESSSE 56
Type	sailing yacht
LOA (m)	17,20
Beam (m)	4,90
Draft (m)	3,00
Draft min (m)	1,50
Air draft (m)	23,00
Headroom (m)	2,00
Year built	1988
Builder	Bloemsma / Anne Wever
Country	The Netherlands
Designer	Martin Bekebrede
Displacement (t)	40
Ballast (tonnes)	12
CE norm	A
Hull material	steel
Hull colour	Pearl white
Hull thickness (mm)	10/8/6mm
Hull shape	S-bilged
Keel type	lifting keel 100mm steel keel beam with lifting keel
Superstructure material	steel
Superstructure (mm)	4mm
Deck plate thickness (mm)	4mm
Rubbing strake	stainless steel
Deck material	steel
Deck finish	non-skid paint
Superstructure deck finish	non-skid paint
Cockpit deck finish	TBS non-skid profile mats
Antifouling (year)	2016 / 2021
Window frame	aluminium



Window material	tempered glass
Deckhatch	yes
Portholes	stainless steel 18+ 4 windows in transom
Insulation	rockwool
Fuel tank (litre)	steel 1300
Fuel tank 2 (litre)	steel 1300
Level indicator (fuel tank)	yes
Freshwater tank (litre)	steel 2X1300L
Greywater tank (litre)	steel 2x250L
Wheel steering	hydraulic
Inside helm position	In pilothouse
Outside helm position	In cockpit
More info on hull	There are 5 watertight compartments built-in 4 waterlocks
Extra info	Boat will be lifted out in Q1 2021 for hull treatment

ACCOMMODATION

Cabins	4
Berths	10
Interior	mahogany Solid
Floor	Solid mahogany
Open cockpit	With tent cover
Aft deck	yes
Pilot house/deck saloon	yes
Headroom saloon (m)	2m
Heating	diesel ducted hot air Webasto
Chart table	In pilothouse
Dining room	Aft
Galley	yes
Countertop	tiles
Sink	stainless steel Double
Cooker	4 burners



Microwave/oven combi	yes
Fridge	yes
Freezer	yes
Hot water system	geyser on Calor Gas In motor compartment
Water pressure system	
Dishwasher	Miele
Hot water tap	yes
Coffee maker	yes
Crockery	yes
Owners cabin	double bed
Bed length (m)	2m
Wardrobe	hanging/drawers/shelves
Bathroom	separate 1 shared bathroom
Toilet	shared
Toilet system	manual
Wash basin	in the bathroom
Shower	separate
Guest cabin 1	single bed In bow, 4 bunk beds
Bed length (m)	2m
Wardrobe	shelves
Bathroom	shared
Guest cabin 2	twin single 2 bunkbeds
Bed length (m)	2m
Wardrobe	shelves
Bathroom	shared
Guest cabin 3	twin single Under pilothouse
Bed length (m)	2 x 1,85m
Wardrobe	shelves
Bathroom	shared
Washing machine	yes
Ironing facilities	yes



MACHINERY

No of engines	1
Make	Ford Lehman
Type	SP 135
HP	135
kW	99,22
Fuel	diesel
Year installed	1988
Maximum speed (kn)	9,5
Cruising speed (kn)	7
Consumption (l/hr)	7
Range (nm)	2400
Engine hours	4426
Drive	shaft
Engine controls	bowden cable
Gearbox	Hurth 450
Bowthruster	electric Noble 16HP
Exhaust	watercooled
Propeller type	fixed
Propeller blades	+ 1 reserve prop 3 blade 32inch bronze
Propeller shaft material	stainless steel
Shaft lubrication	grease
Electric bilge pump	yes
Electrical installation	12/24/240V
Generator	Onan 6,5Kva
Start battery	2x12V 100Ah
Service battery	4x12V 220Ah
Generator battery	1x12V 100Ah
Battery monitor	yes
Battery charger/inverter	Victron 80Amp
Solar panel	4v 50Wp on Davits



Diode battery combiners	yes
Shorepower	with cable

NAVIGATION

Compass	Sestel
Electric compass	VDO
Depth sounder/log	Hummingbird fishfinder 565
Windset	VDO
VHF	NT MTech 500
Autopilot	Segatron
Rudder angle indicator	yes
Radar	Furuno 24nm
GPS	Furuno WAAS
Radar/plotter	Furuno
Navtex	Furuno
EPIRB	yes
Navigation lights	yes
Searchlight	yes

EQUIPMENT

Cockpit cover	Cockpit tent
Sun awning	Tents over the booms
Cockpit cushions	yes
Cockpit table	yes
Boarding ladder	stainless steel Fixed on hull
Deck shower	With warm water
Anchor	CQR Plough 50kg
Anchor chain	galvanized steel 13mm 50m
Anchor 2	Danforth 25kg
Windlass	electrical
Dinghy	rigid inflatable BAB 3,7m



Outboard	40HP Yamaha 2stroke
Davits	steel
Davits controls	electrical Manual and electric
Sea railing	stainless steel
Grab rail (superstructure)	steel
Life raft	container Avon
Life raft (pers)	6
Last life raft survey	Needs survey
Lifejackets	yes
Fenders	8
Mooring lines	8
Tools	In motorcompartment
TV	Panasonic 31inch
Satellite	Seperate
Radio	yes
DVD player	yes
Cockpit speakers	yes
Speakers in salon	And in pilothouse
Fire extinguisher	2x
Extinguisher in engine room	yes
Extra info	Aircompressor + diving gear
Extra info	Waterski equipment for dinghy

RIGGING

Rigging	ketch
Standing rigging	wire 12 & 10mm stainless steel
Brand mast	Nedal
Material mast	aluminium coated
Spreaders	2x2 main mast and 1x2 on mizzen
Mainsail	replaced in 2011 Furling 50m2 400gr Dacron
Mizzen	2011, 400gr Dacron Furling 28m2

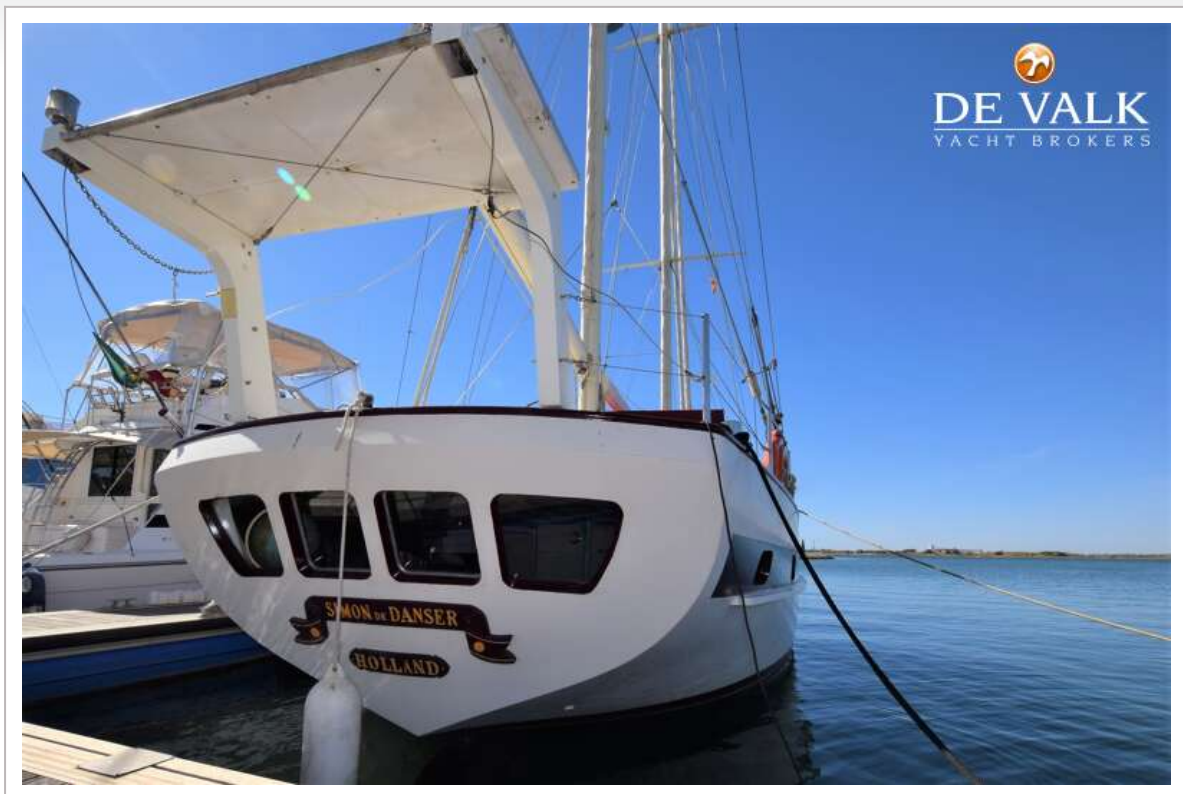


Jib	2011 400gr Dacron Furling 28m2
Genoa	2011 400gr Dacron Furling 70m2
Genoa furler	Manual
Gennaker	2011, 90gr Dacron 150m2
Self tacking jib installation	yes
Reefing System	All sails are furling
Primary sheet winch	2x Enkes 28ASC
Secondary sheet winch	3x Enkes
Multifunctional winches	6x on deck and masts



BLOEMSMA MIRESSA 56

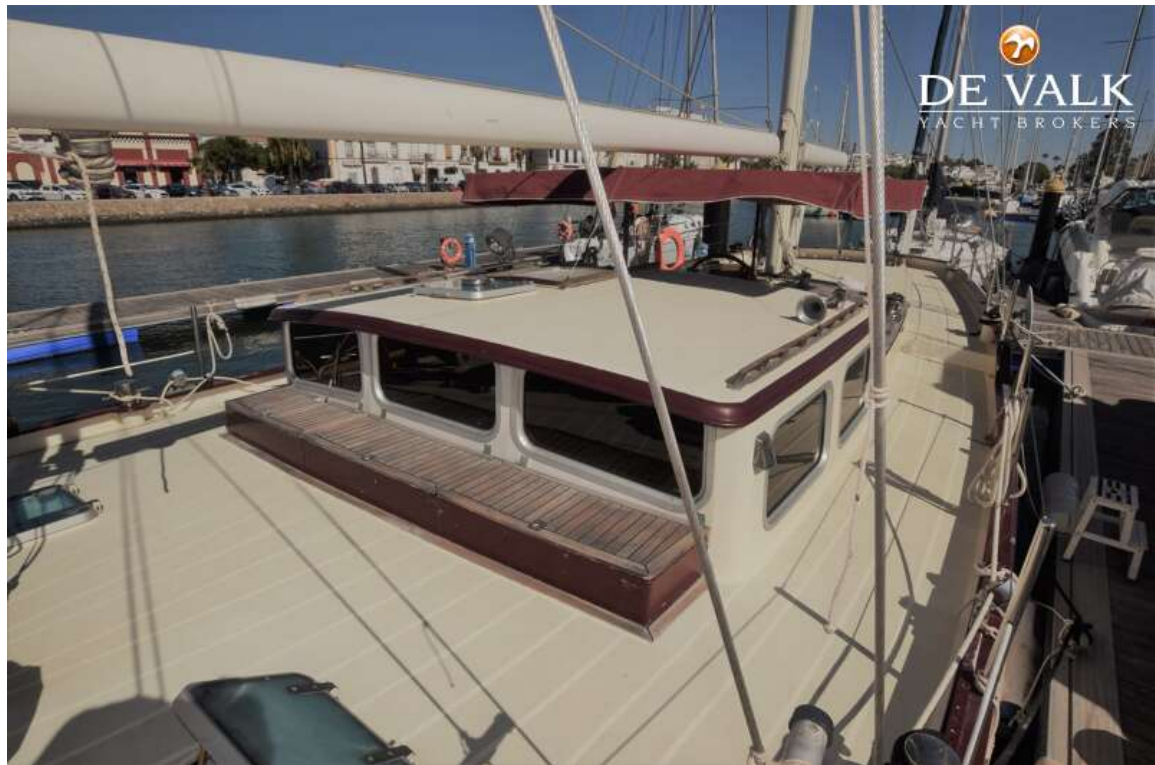


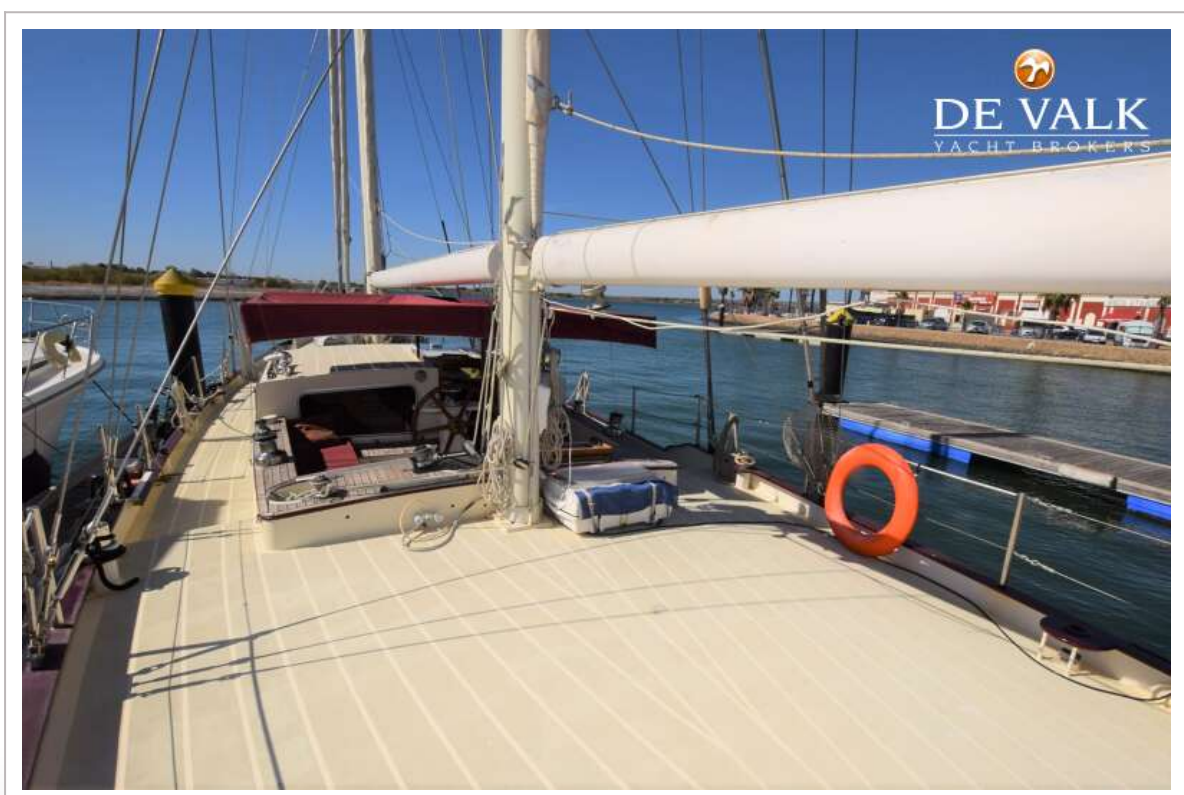


BLOEMSMA MIRESSÉ 56

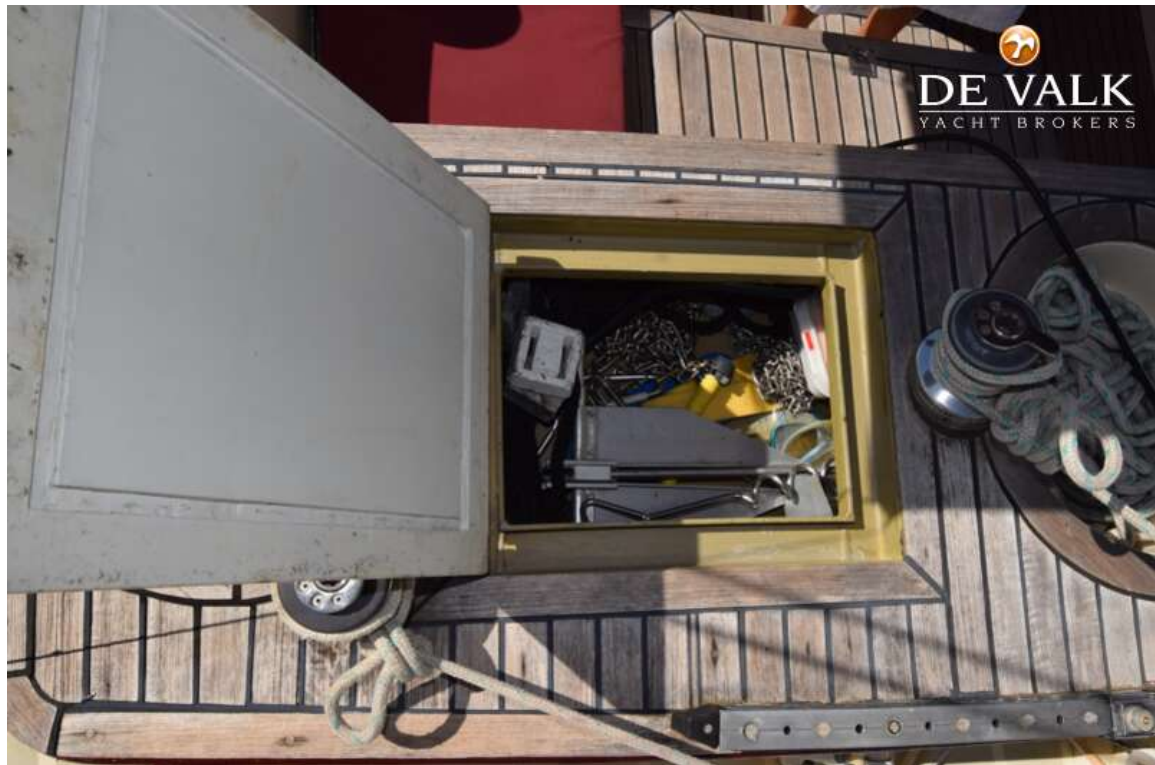


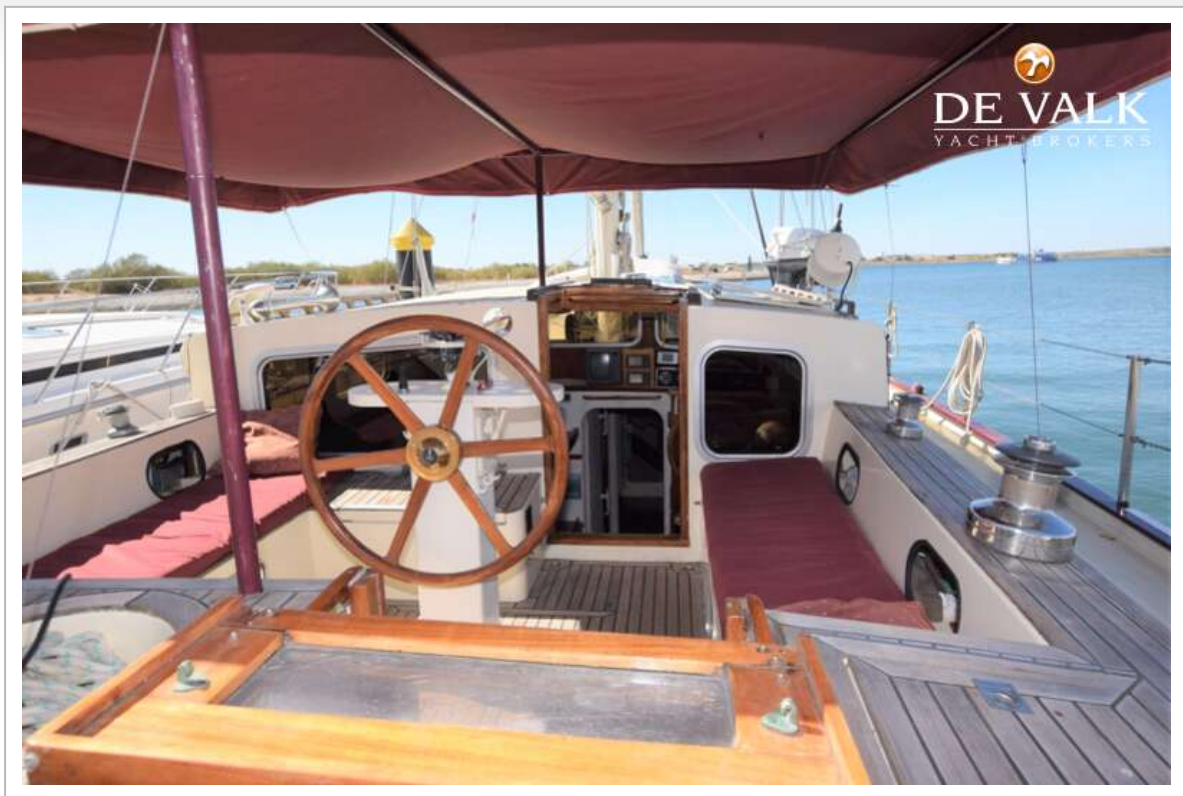




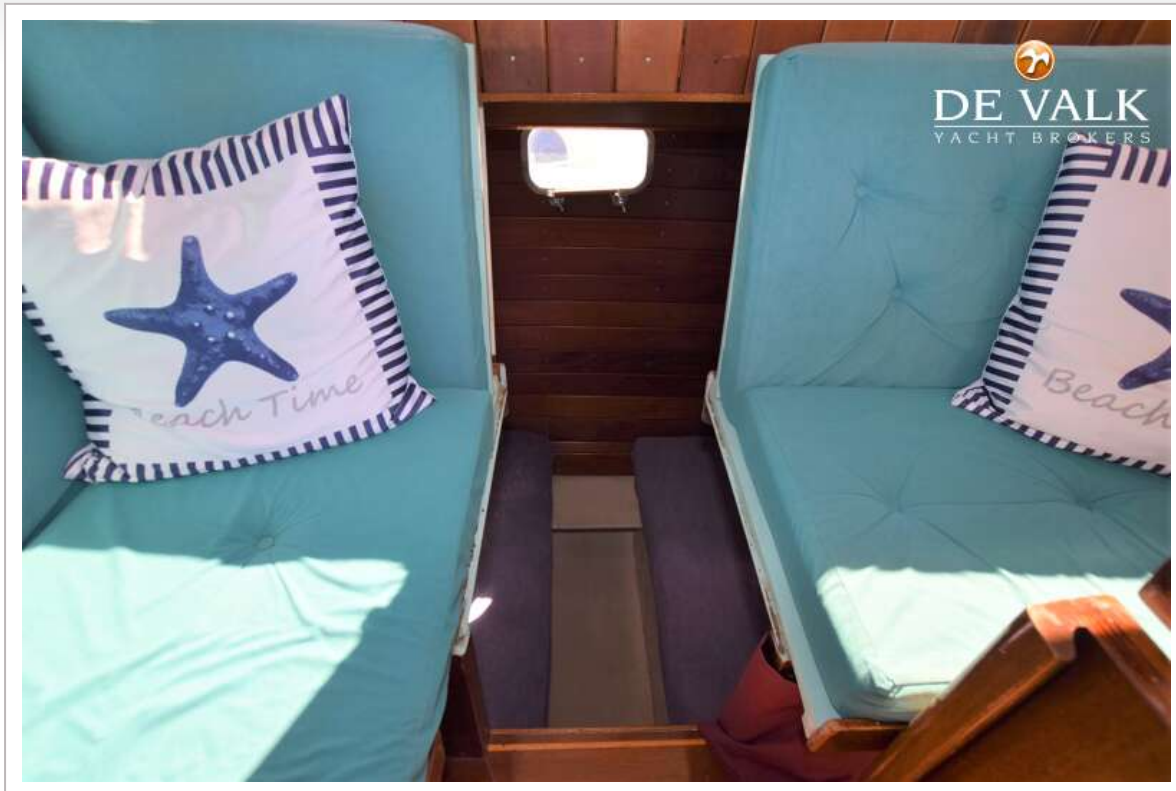






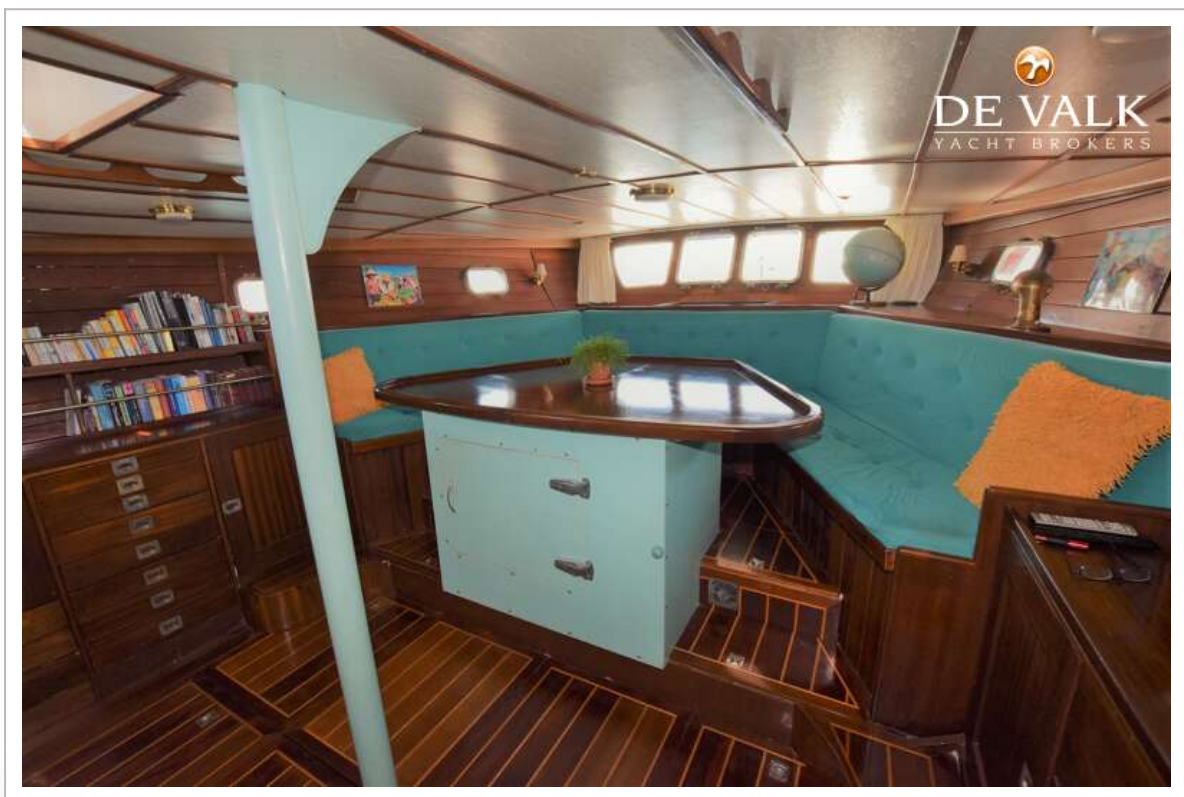
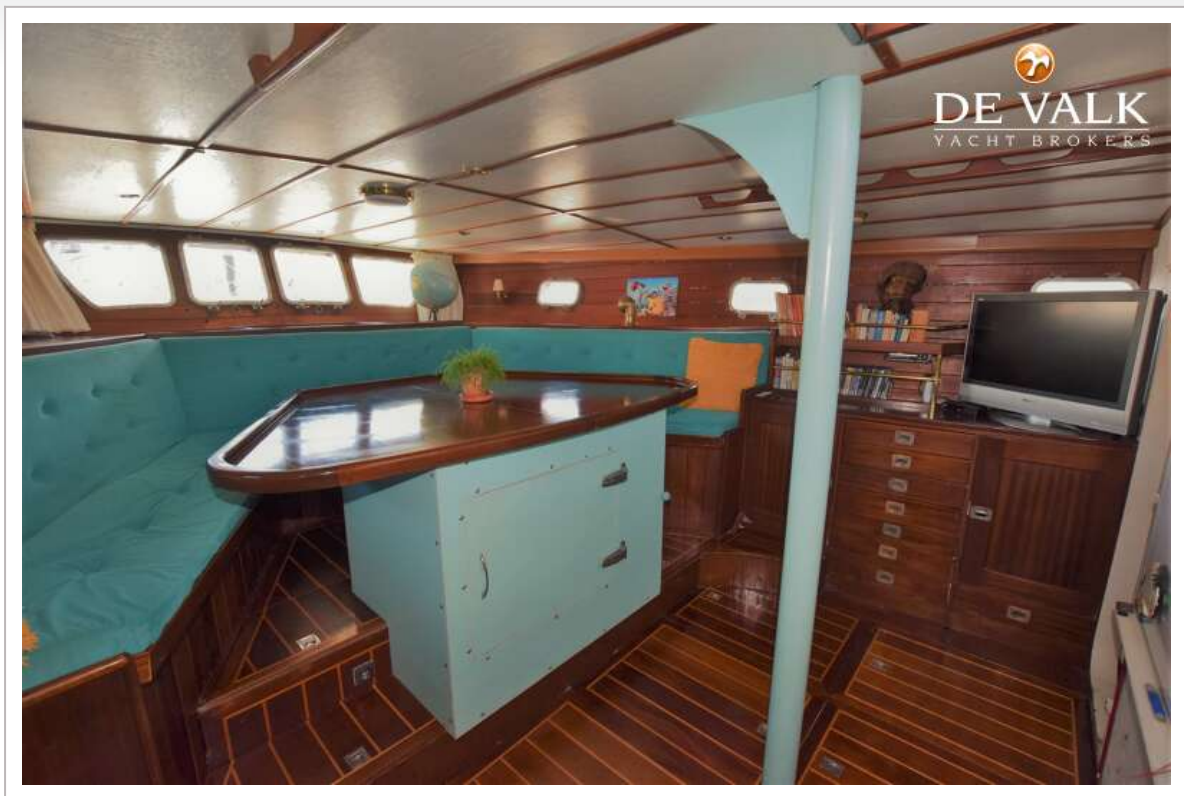




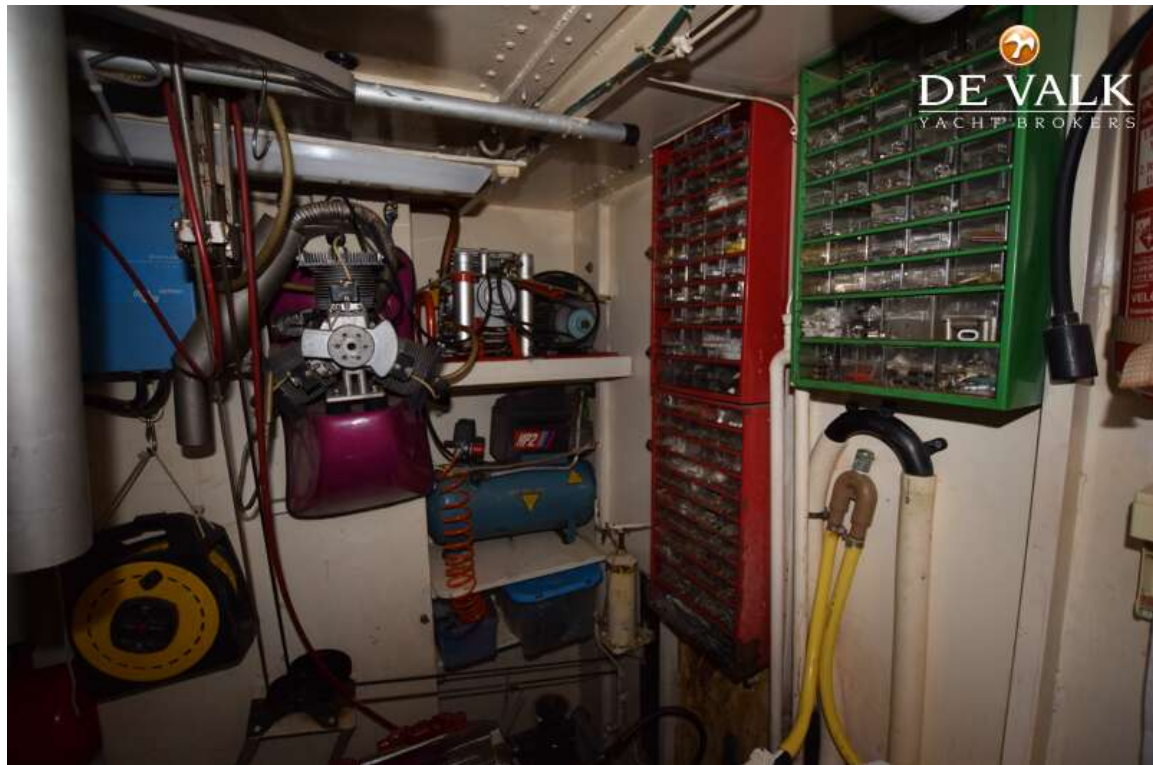












BLOEMSMA MIRESSÉ 56

