



LOGGER SCHOONER 22



LOGGER SCHOONER 22

BROKER'S COMMENTS

This Logger Schooner is a well-built sailing vessel, designed by Peter Bosgraaf. With the swivel keel she is not too deep, the rigging gives many different possibilities for sailing. Has two engines that hydraulically turn a propeller shaft and is easy to maneuver due to the strong bow thruster. In the interior there is a lot of space in the deck salon and below. Is beautiful to travel with sailing but also good to stay on. Has a CVO inspection, good regarding safety. Can be viewed at De Valk Monnickendam.

Reinier van der Wolf

SPECIFICATIONS

Dimensions	22.00 x 6.00 x 2,00 / 4.00 (m)	Builder	Helldörfer Las en Scheepsbouw
Built	2007	Cabins	3
Material	Steel	Berths	9
Engine(s)	2 x PERKINS Sabre RE30850 diesel	Hp/Kw	2 x 87.00 (hp), 64.03 (kw)
Asking price	€ 745.000 (VAT Paid)	Lying	at sales office

CONTACT

Sales office	De Valk Monnickendam B.V.	Telephone	+31 (0)299 65 63 50
Address	Hoogedijk 6 1145 PM Katwoude NL	E-mail	monnickendam@devalk.nl

DISCLAIMER

These particulars are given in good faith as supplied but cannot be guaranteed.



LOGGER SCHOONER 22

GENERAL

Model	LOGGER SCHOONER 22
Type	sailing yacht
LOA (m)	22,00
LWL (m)	20,83
Beam (m)	6,00
Draft (m)	4,00
Draft min (m)	2,00
Air draft (m)	23,50
Headroom (m)	2,20
Year built	2007
Launched	the boat was completely ready in 2010/2011 2007 and completed at 2011
Builder	Helldörfer Las en Scheepsbouw
Country	The Netherlands
Designer	Peter Bosgraaf
Displacement (t)	64
Ballast (tonnes)	lead 18
Hull material	steel
Hull colour	blue
Hull thickness (mm)	Corten steel 5 mm
Hull shape	round-bilged
Keel type	swing keel 3 ton
Superstructure material	steel
Superstructure (mm)	4 mm
Deck plate thickness (mm)	3 mm
Rubbing strake	wood & steel / staal
Deck material	steel
Deck finish	non-skid paint
Superstructure deck finish	paint
Cockpit deck finish	non-skid paint
Antifouling (year)	2017



LOGGER SCHOONER 22

Dorades	yes
Window frame	aluminium
Window material	double glazing Thick and very strong / dik en zeer sterk
Deckhatch	yes
Portholes	aluminium
Insulation	foam
Fuel tank (litre)	steel 3500 / 4 tanks connected together / 4 tanks aan elkaar verbonden
Level indicator (fuel tank)	yes
Fuel daytank (litre)	steel 125
Level indicator (daytank)	yes
Freshwater tank (litre)	steel 4500
Level indicator (freshwater)	yes
Blackwater tank (litre)	steel 4500
Level indicator (blackwater)	yes
Blackwater tank extraction	deck extraction + pump Rheinstrom pump
Wheel steering	rack & pinion
Emergency tiller	yes
More info on paintwork	The paintwork on the hull is mediocre
Extra info	CVO Certificate + ENI number
Extra info	length of the vessel including the bowsprit is 25 meters.

ACCOMMODATION

Cabins	3
Berths	9
Interior	Okume wood / hout
Layout	deck saloon / saloon / owner cabin / 2 guest cabins / 2 toilets with shower rooms
Floor	carpet And wood / hout
Open cockpit	yes
Deck saloon	yes
Saloon	yes



LOGGER SCHOONER 22

Headroom saloon (m)	2,20
Air-conditioning	reverse cycle airco
Navigation center	yes
Chart table	yes
Dining room	yes
Dinette	yes
Dinette to convert into berth	yes
Galley	yes
Countertop	plastic
Sink	stainless steel
Cooker	induction ATAG 4-pits
Microwave/oven combi	ATAG
Fridge	IKEA
Freezer	IKEA
Hot water system	220V 3x 60 ltr boilers
Water pressure system	electrical
Dishwasher	SIEMENS
Owners cabin	French bed
Bed length (m)	2,10 x 1,60
Wardrobe	hanging and drawers
Bathroom	en suite
Toilet	en suite
Toilet system	electric
Wash basin	in the bathroom
Shower	en suite
Guest cabin 1	twin single
Bed length (m)	2,10 x 0,80
Wardrobe	hanging and drawers
Bathroom	shared
Toilet	shared
Toilet system	electric
Wash basin	in the bathroom



LOGGER SCHOONER 22

Shower	shared
Guest cabin 2	twin single
Bed length (m)	2,10 x 0,80
Wardrobe	hanging and drawers
Bathroom	shared
Toilet	shared
Toilet system	electric
Wash basin	in the bathroom
Shower	shared
Guest cabin 3	single bed This cabin is unfinished / deze cabin is niet geheel afgewerkt
Washing machine	yes
Dryer	yes

MACHINERY

No of engines	2
Make	PERKINS
Type	Sabre RE30850
HP	87
kW	64.03
Fuel	diesel
Year installed	2006
Engine hours	550
Engine cooling system	freshwater heat exchanger
Drive	shaft
Engine controls	electrical
Bowthruster	hydraulic MaxPower
Propeller type	folding Max Prop
Propeller blades	3
Propeller shaft material	steel
Shaft lubrication	oilbath



LOGGER SCHOONER 22

Electric bilge pump	yes
Electrical installation	230 / 24V
Generator	silent separator KOHLER 9EFKOZD 9 Kw
Running hours generator	1348
Batteries	5 x 12V, 12 x 2V
Start battery	2
Service battery	yes
Generator battery	yes
Battery monitor	VICTRON BMV- 501+ VE Bus Multi Control
Battery charger	VIVTRON Blue Smart Charger 24V/8Amp
Battery charger/inverter	2x VICTRON Multi Plus Phoenix 24/3000/70
Shorepower	with cable
Extra info	the engines have no gearboxes but rotate the propeller shaft hydraulically

NAVIGATION

Compass	yes
Depth sounder	2 transducers which can be coupled on a navigation computer 2x
Forw. looking depth sounder	Echopilot
Windset	which can be coupled on a navigation computer MARETRON
VHF	Vertex VM 3500 E
Radar	yes
GPS	yes
AIS transceiver	yes
Navigation lights	yes
Searchlight	yes

EQUIPMENT

Cockpit cushions	yes
Cockpit chairs	yes



LOGGER SCHOONER 22

Anchor	Stock anchor 145 Kg
Anchor chain	galvanized 50 Mtr / 16 mm
Windlass	hydraulic Riddershof
Capstan	yes
Sea railing	stainless steel
Pushpit	yes
Pulpit	yes
Lifebuoy	yes
Horn	yes
Fenders	yes
Mooring lines	yes
Alarm system	yes
TV	yes
TV receiver	yes
Radio-cd player	Phillips
Speakers in salon	in the decksalon
Clock - barometer	yes
Fire extinguisher	yes
Extinguisher in engine room	yes
Auto extinguisher system	yes

RIGGING

Rigging	schooner
Standing rigging	Dyform 12/14/19mm
Brand mast	Master
Material mast	aluminium
Spreaders	2x 2 sets
Keel stepped mast	both
Battcars	yes
Fully battened mainsail	76 m2 Baltic Sails (2011)
Mizzen	fully battened 78 m2 Baltic Sails (2011) + wishboom



LOGGER SCHOONER 22

Jib	jib sail 67 m2 Baltic Sails (2011)
Genoa furler	Pro Furl
Staysail	36 m2 Baltic Sails (2011)
Staysail furler	Pro Furl
Reefing System	slabreefing
Primary sheet winch	2x Andersen 58 ST
Secondary sheet winch	2x Andersen 52 ST
Genoa sheetwinches	2x Andersen 58 ST Hydraulic
Halyard winches	2x Andersen 58 ST Hydraulic
Reefing winch	1x Andersen 52
Extra info	bowsprit



LOGGER SCHOONER 22



LOGGER SCHOONER 22





LOGGER SCHOONER 22



LOGGER SCHOONER 22





LOGGER SCHOONER 22



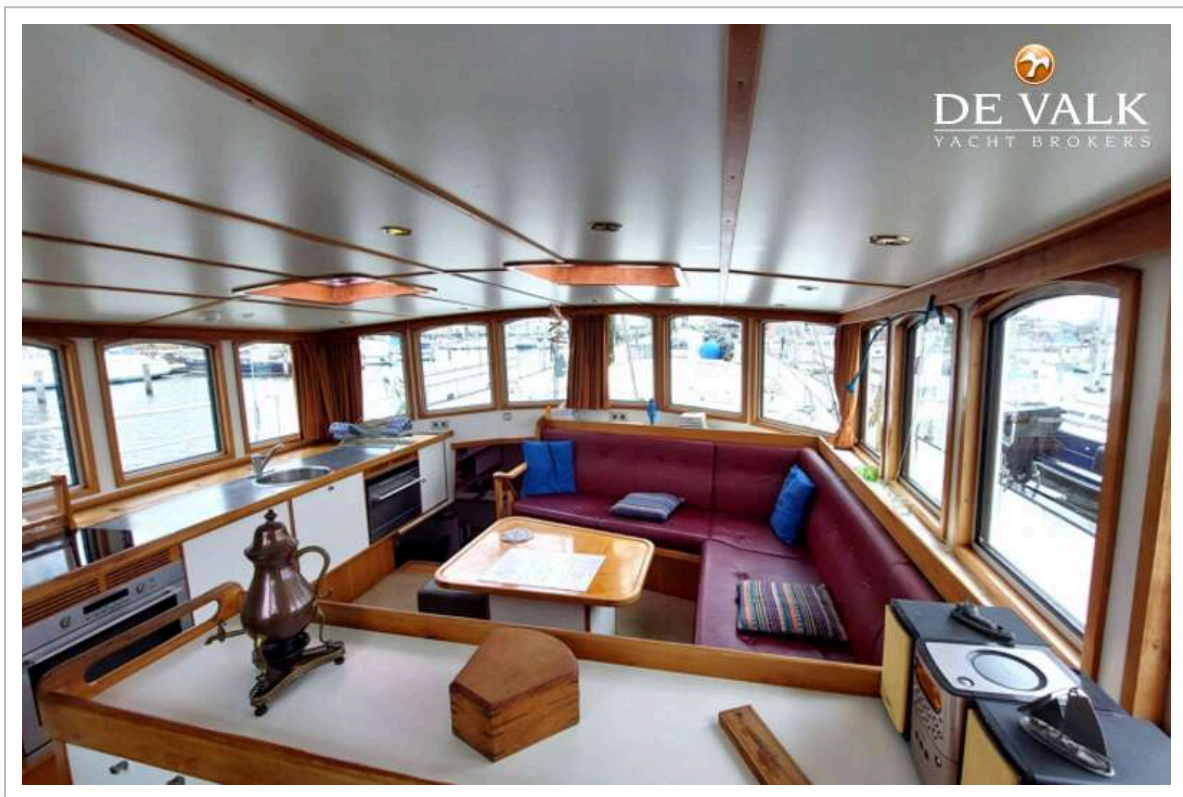
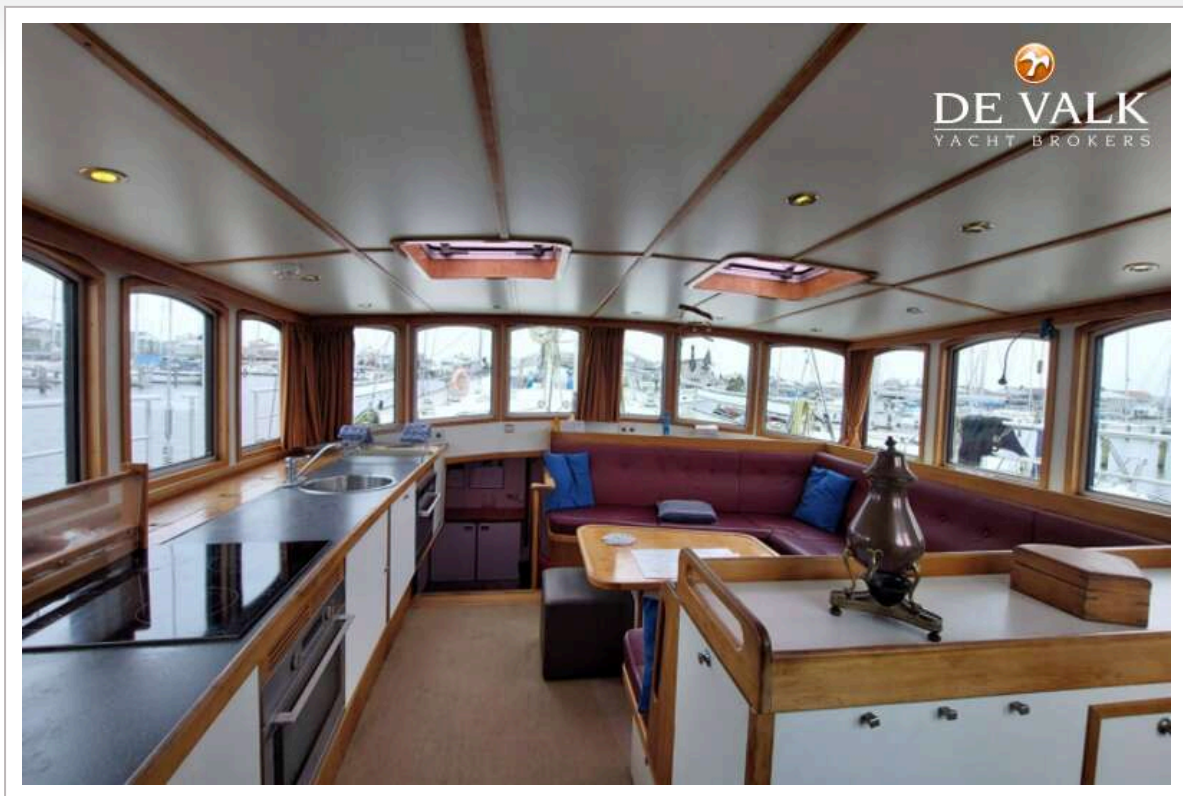
LOGGER SCHOONER 22



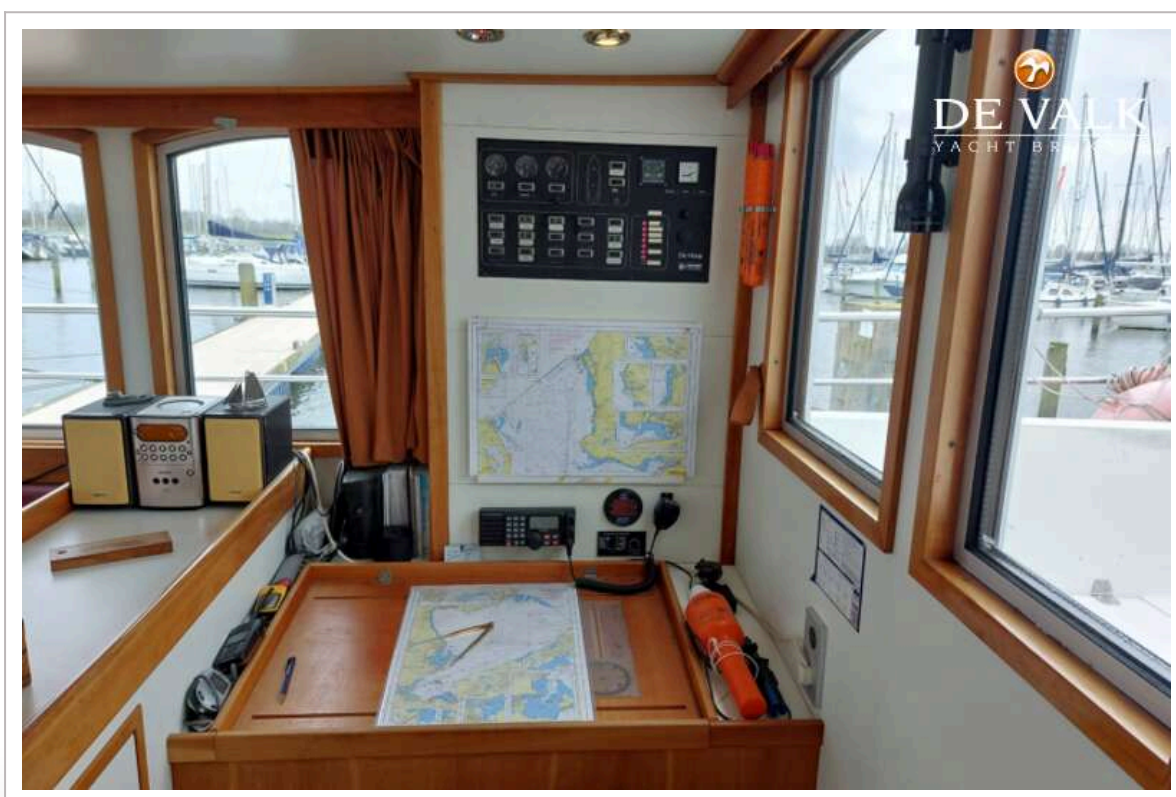
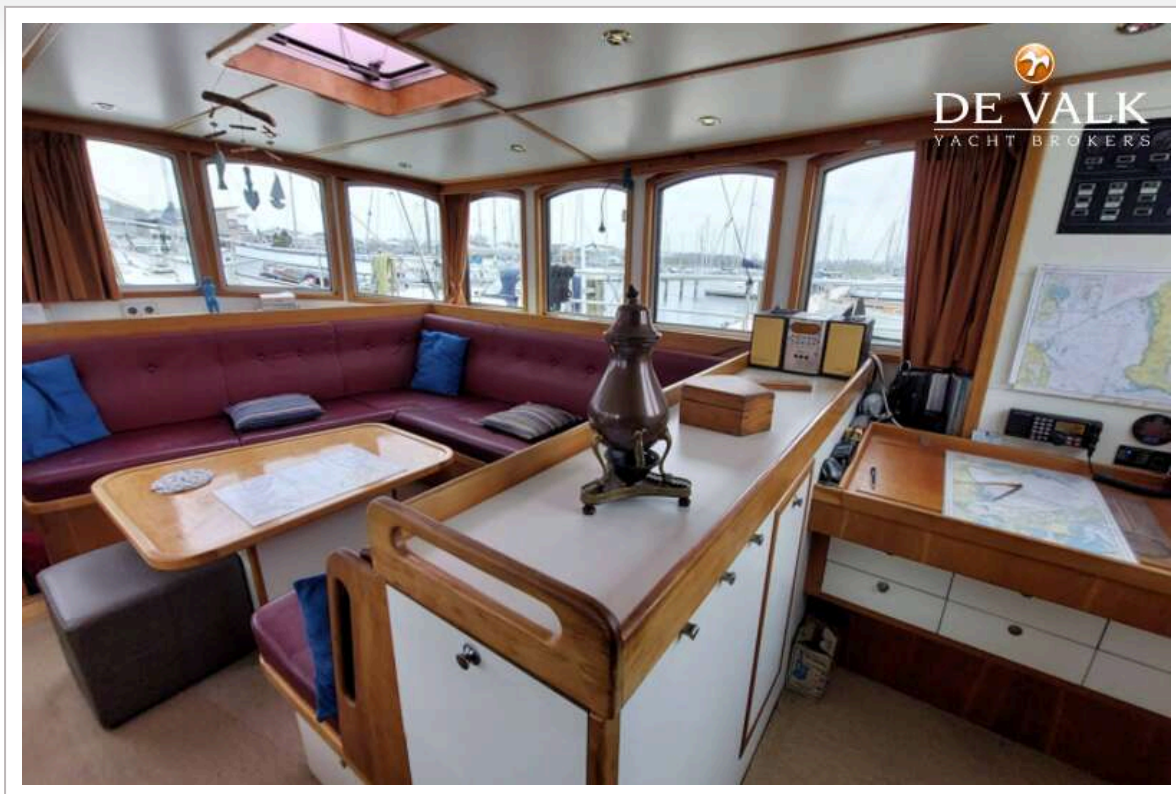
LOGGER SCHOONER 22



LOGGER SCHOONER 22



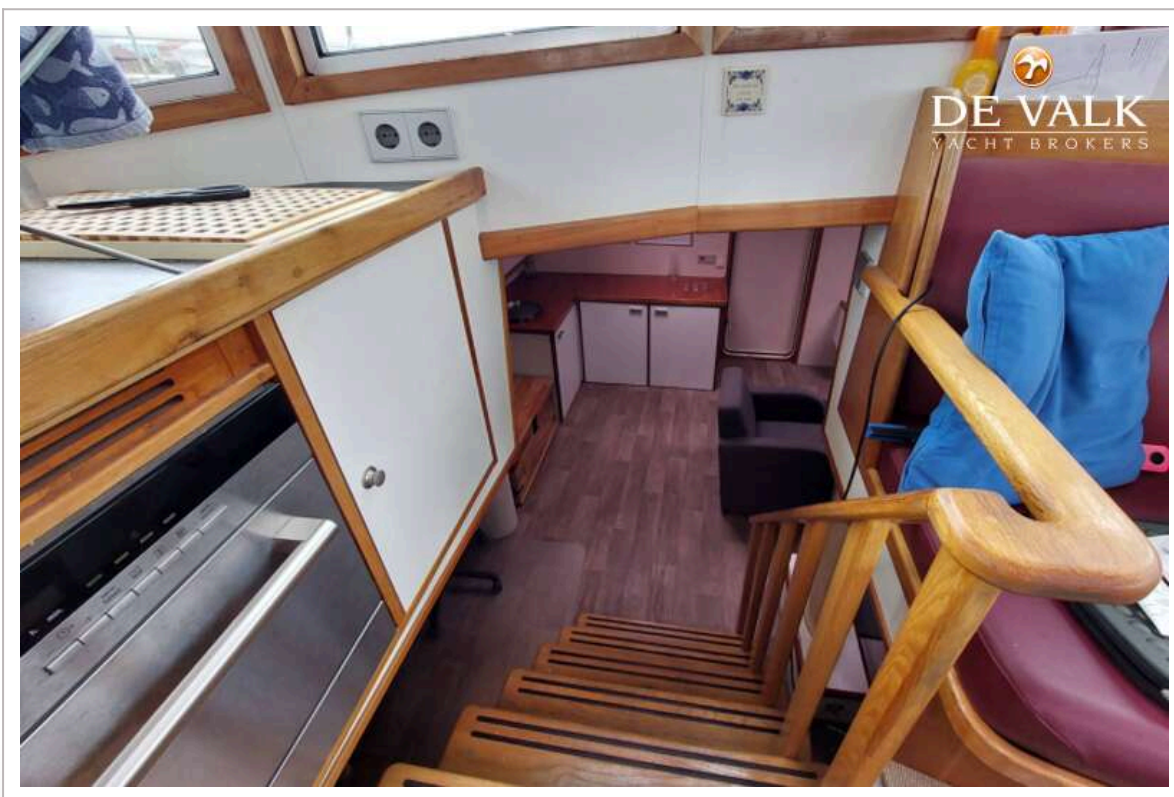
LOGGER SCHOONER 22



LOGGER SCHOONER 22



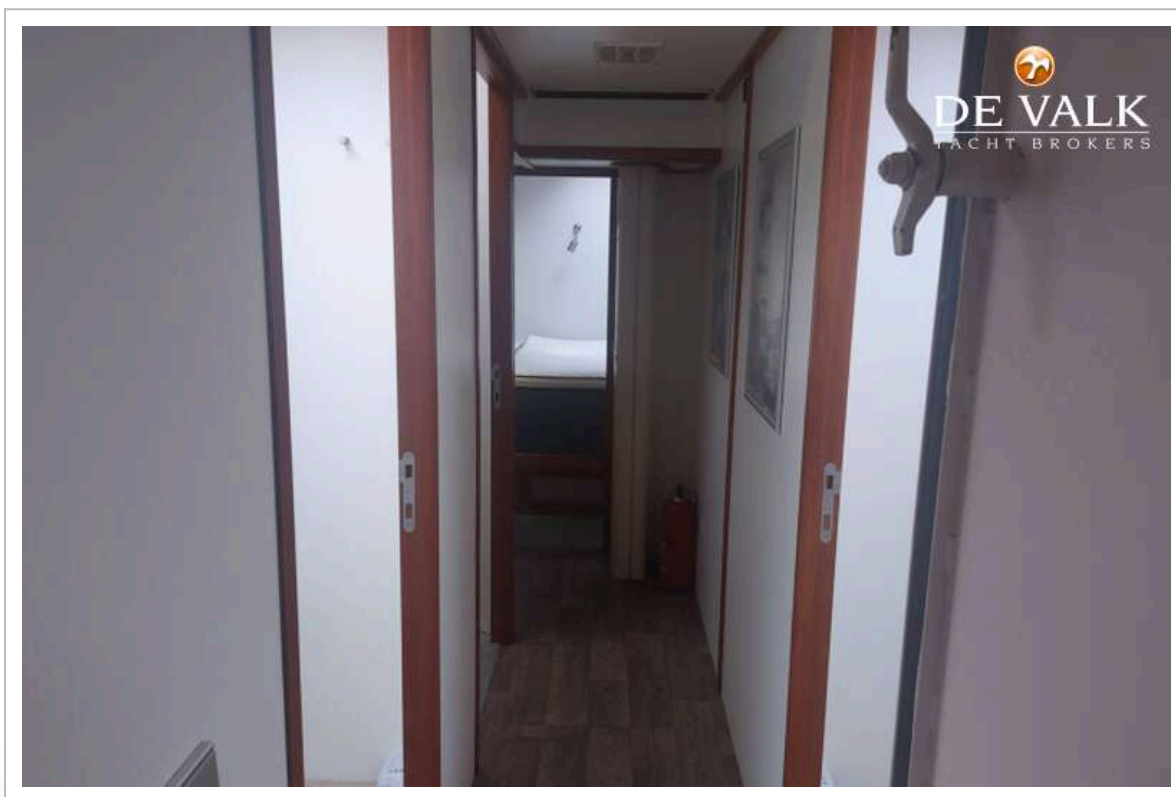
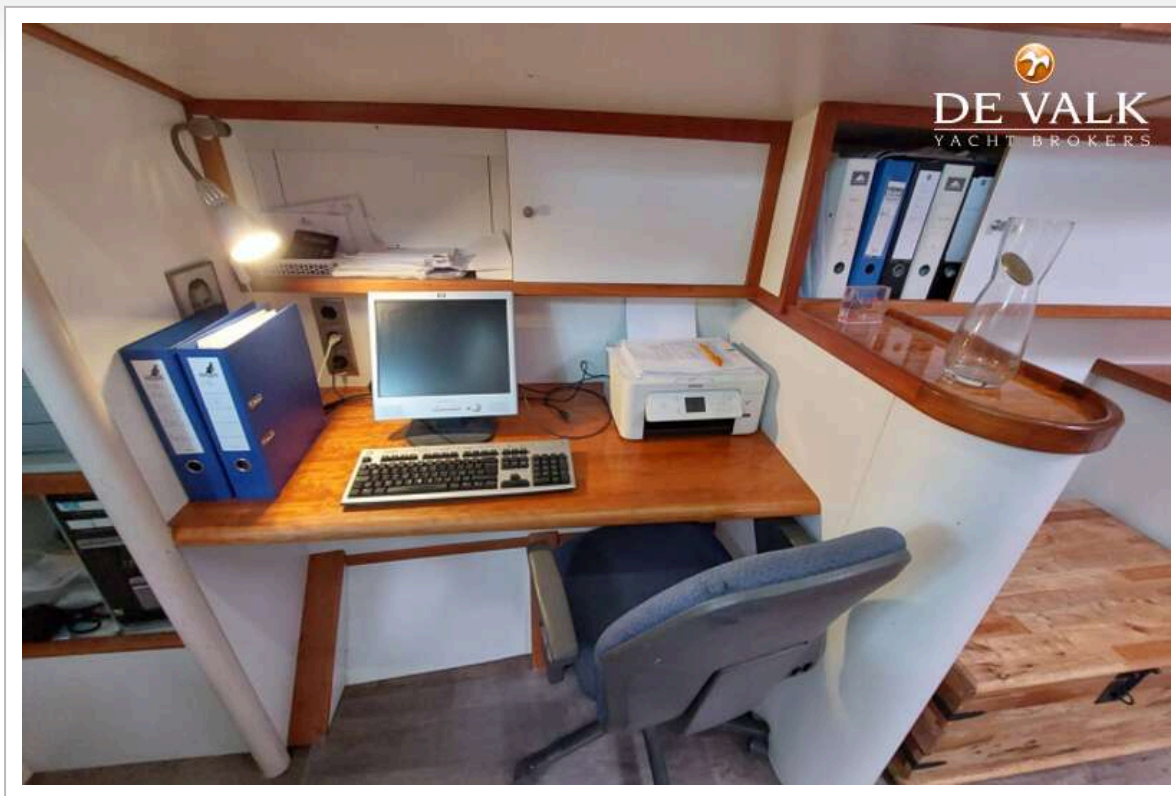
LOGGER SCHOONER 22



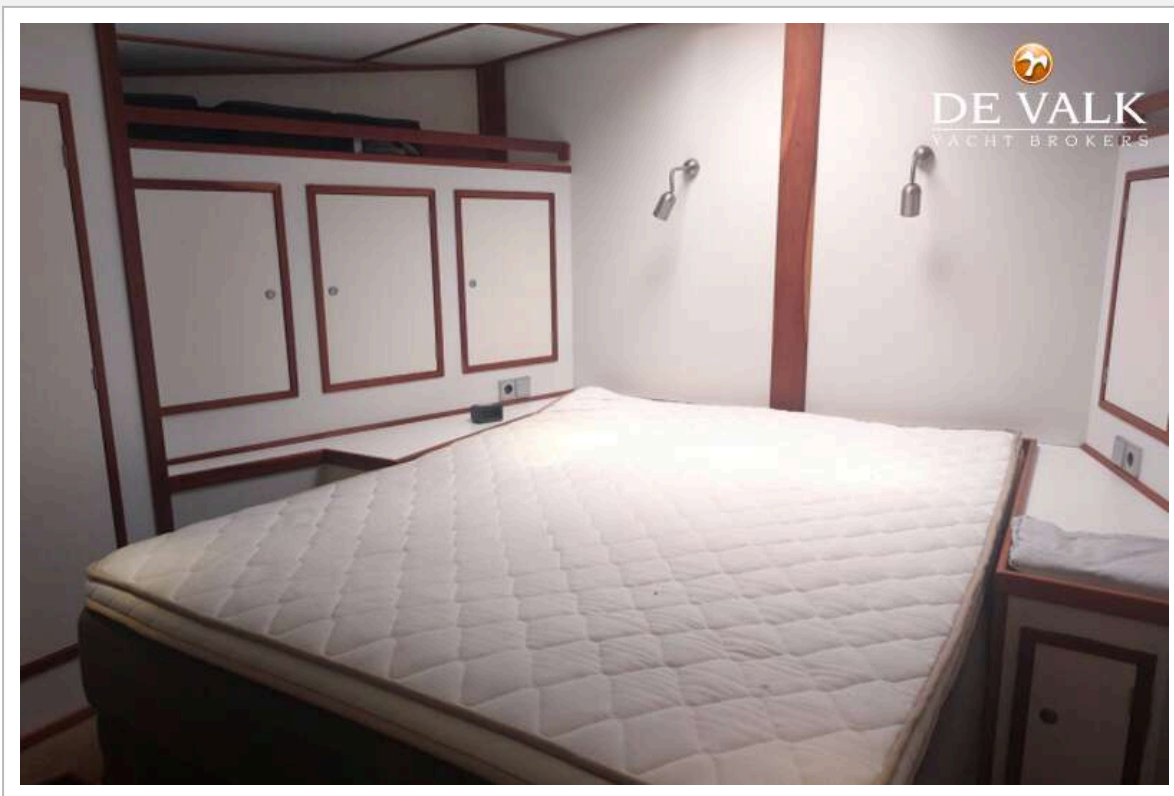
LOGGER SCHOONER 22

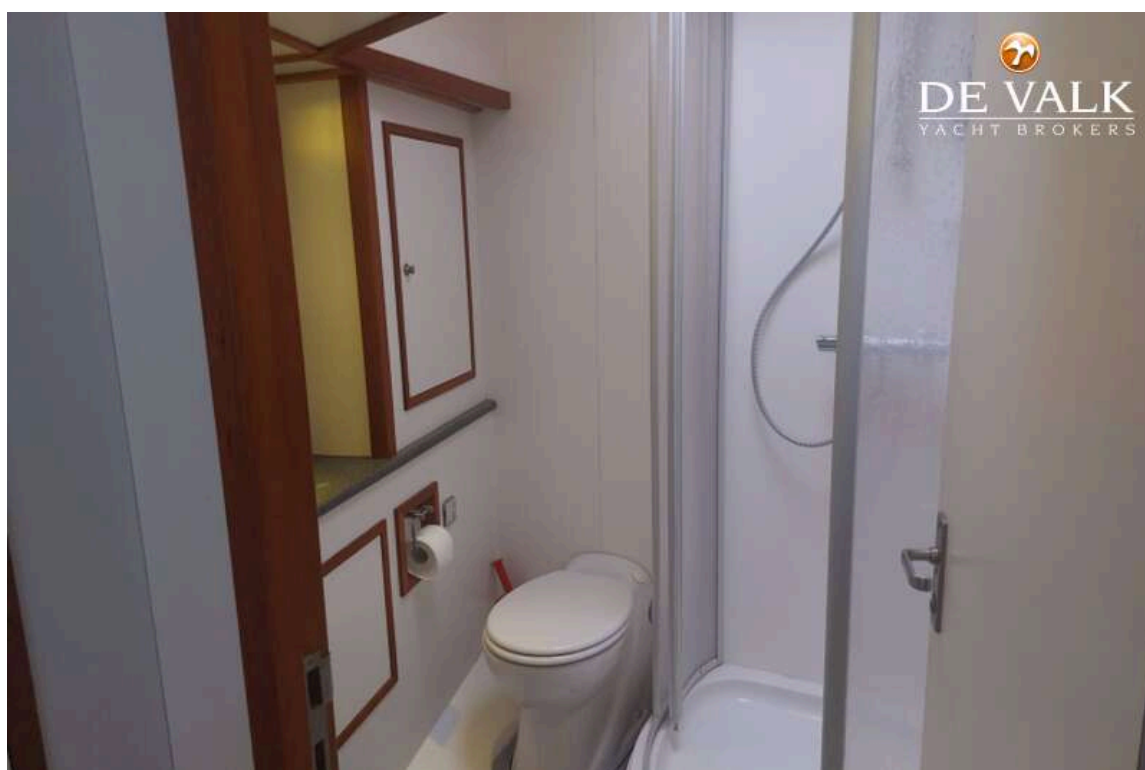


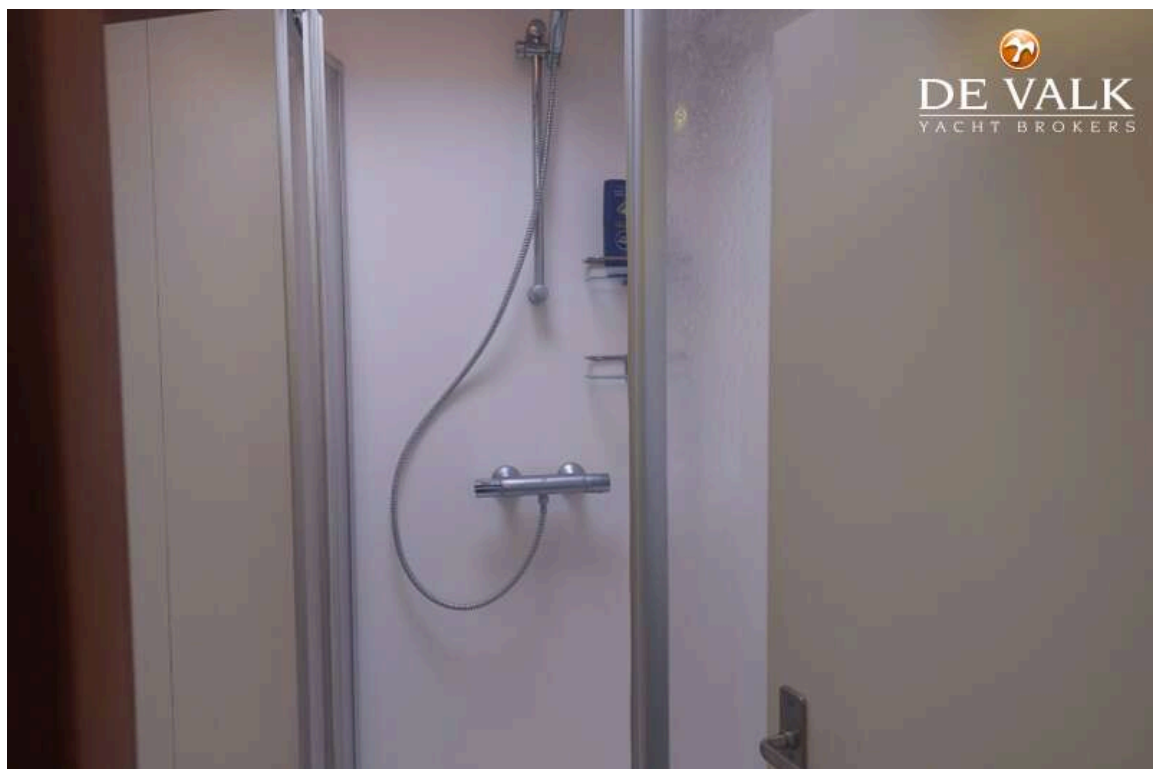
LOGGER SCHOONER 22



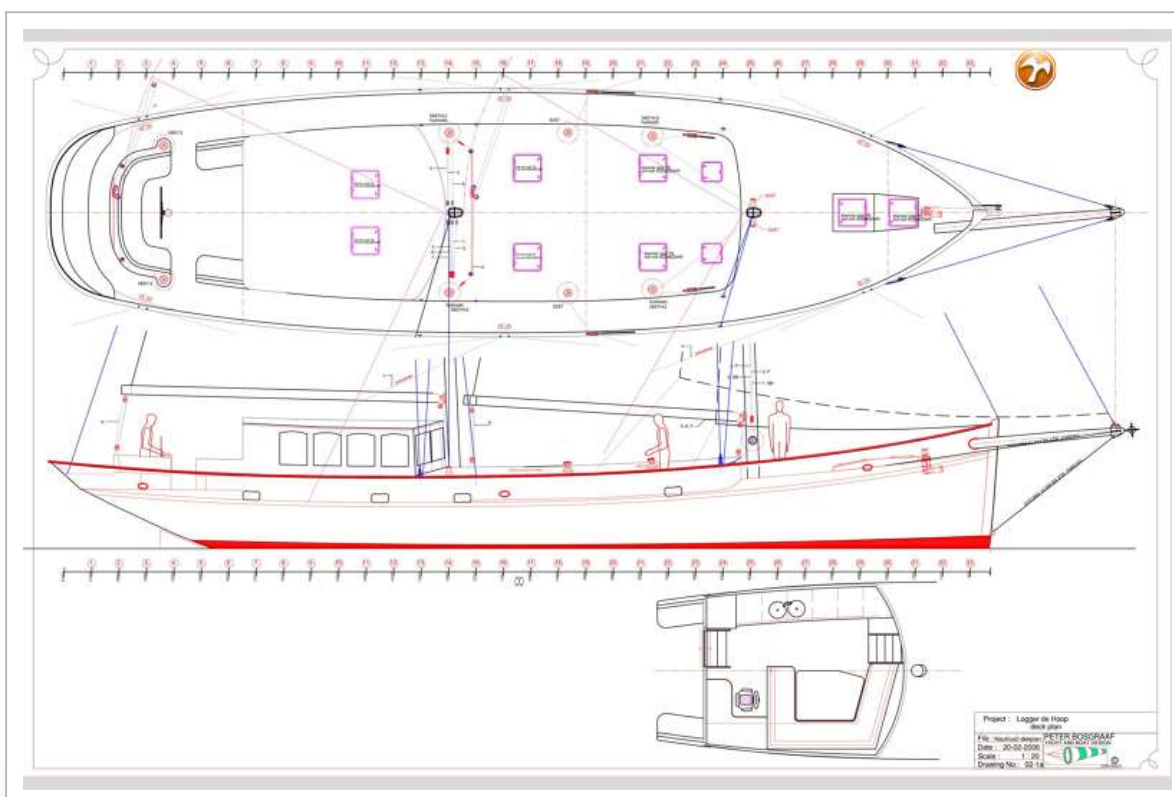
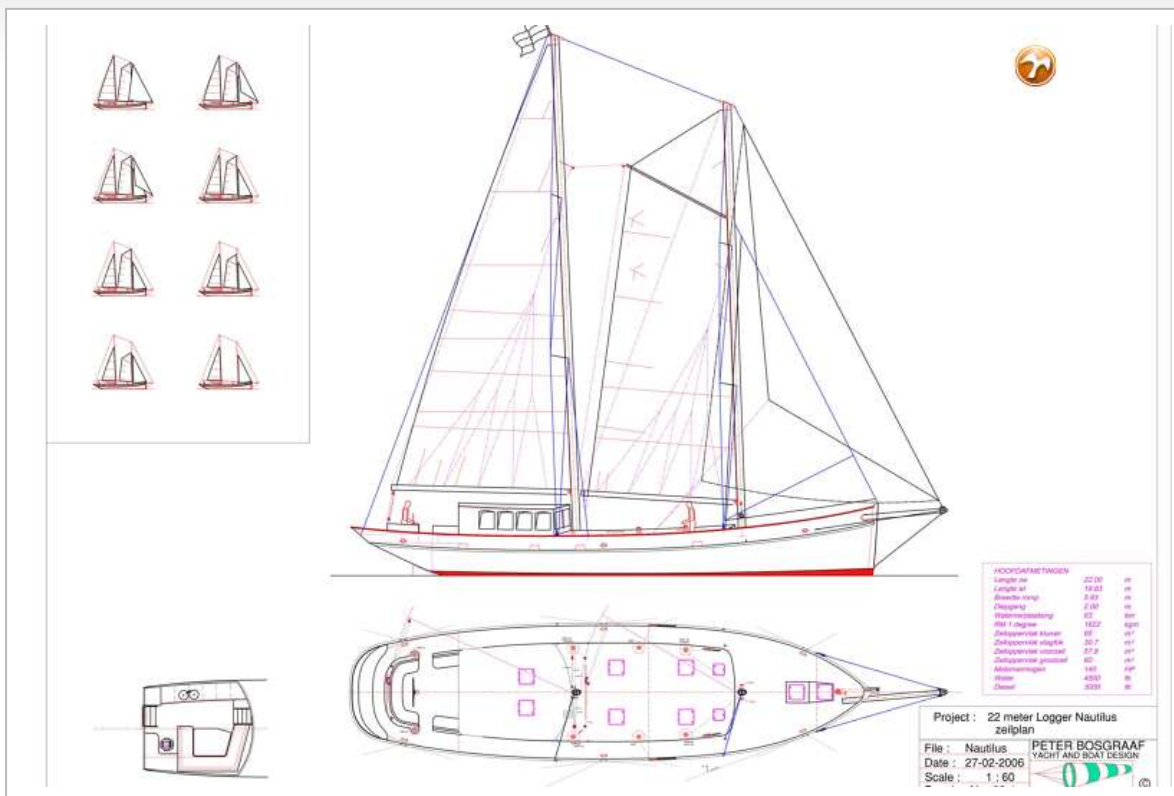
LOGGER SCHOONER 22



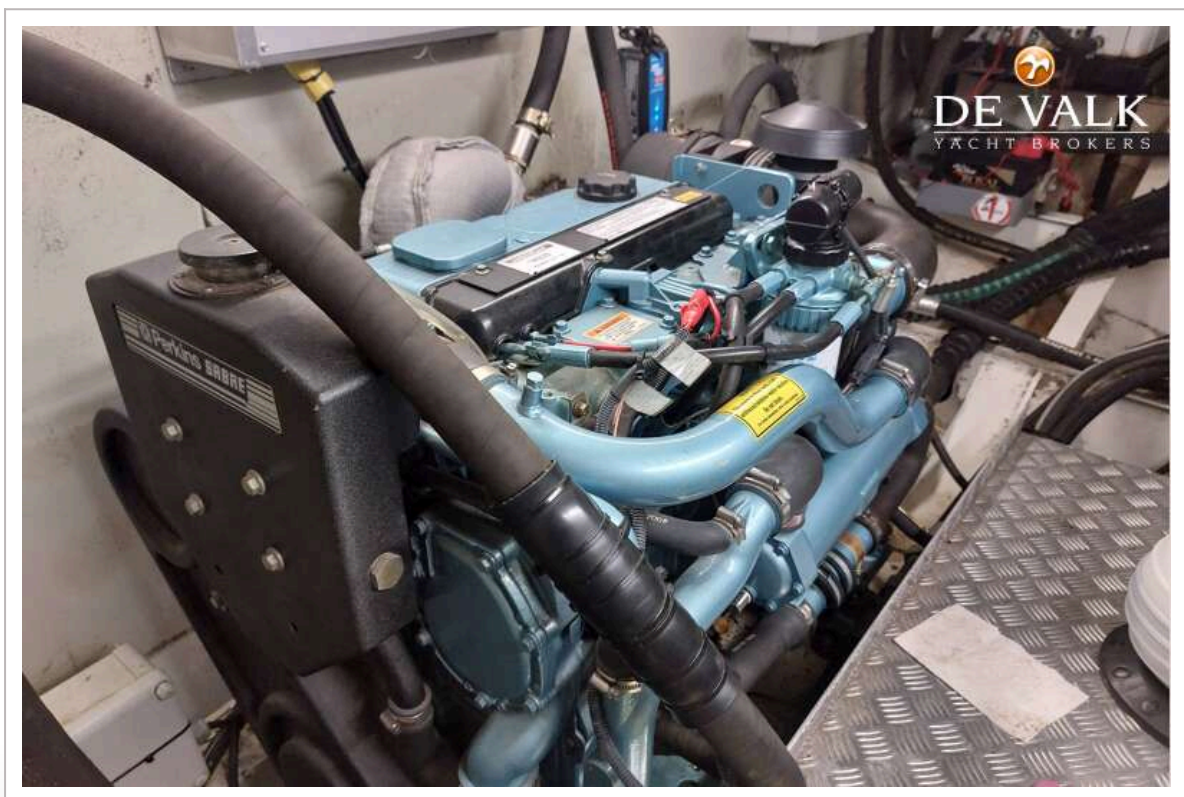
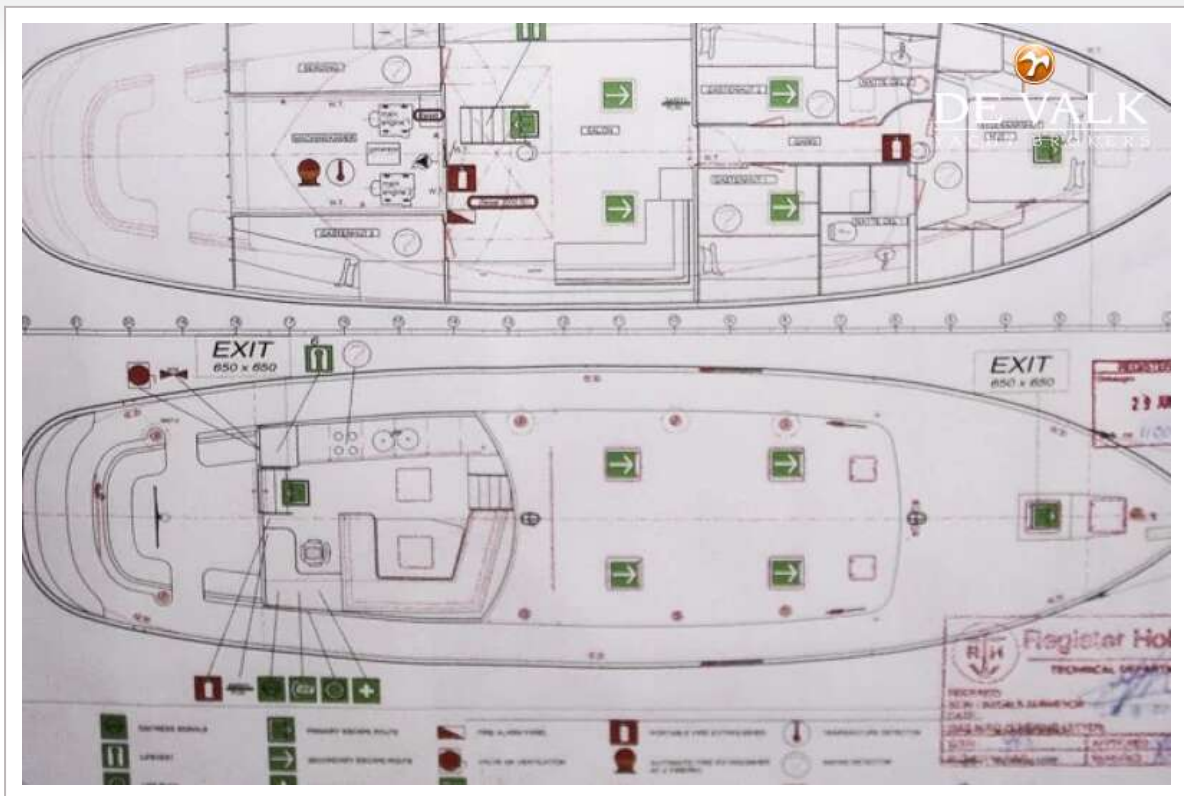




LOGGER SCHOONER 22



LOGGER SCHOONER 22



LOGGER SCHOONER 22

