



DE VALK  
YACHT BROKERS



VAN DE STADT TULLA III



DE VALK  
YACHT BROKERS

## BROKER'S COMMENTS

When modern lines are out of your thoughts and you wish a yacht to be admired for her true classic lines, the one-off Tulla III should be your choice. The excellent fast sailing capacities are also characteristic for this yacht, designed for the admirals cup in 1965. After an extensive refit in 2007/08 she's as new. Engine of 2001. Teak deck of 2003.

*Reinier van der Wolf*

## SPECIFICATIONS

|                     |                         |                |   |
|---------------------|-------------------------|----------------|---|
| <b>Dimensions</b>   | 12.51 x 3.29 x 1.65 (m) | <b>Builder</b> | Van Dam - Oude Wetering / E.G. vd Stadt |
| <b>Built</b>        | 1962                    | <b>Cabins</b>  | 1                                       |
| <b>Material</b>     | Steel                   | <b>Berths</b>  | 6                                       |
| <b>Engine(s)</b>    | 1 x Yanmar 4JH3E Diesel | <b>Hp/Kw</b>   | 54.00 (hp), 39.69 (kw)                  |
| <b>Asking price</b> | sold (VAT )             | <b>Lying</b>   | contact Monnickendam                    |

## CONTACT

|                     |                                       |                  |                        |
|---------------------|---------------------------------------|------------------|------------------------|
| <b>Sales office</b> | De Valk Monnickendam B.V.             | <b>Telephone</b> | +31 (0)299 65 63 50    |
| <b>Address</b>      | Hoogedijk 6<br>1145 PM Katwoude<br>NL | <b>E-mail</b>    | monnickendam@devalk.nl |

## DISCLAIMER

These particulars are given in good faith as supplied but cannot be guaranteed.



# VAN DE STADT TULLA III

## GENERAL

|                                |  |
|--------------------------------|--|
| <b>Model</b>                   | VAN DE STADT TULLA III                               |
| <b>Type</b>                    | sailing yacht Sailing yacht                          |
| <b>LOA (m)</b>                 | 12,51  |
| <b>LWL (m)</b>                 | 9,20   |
| <b>Beam (m)</b>                | 3,29   |
| <b>Draft (m)</b>               | 1,65   |
| <b>Year built</b>              | 1962   |
| <b>Builder</b>                 | Van Dam - Oude Wetering / E.G. vd Stadt              |
| <b>Country</b>                 | The Netherlands                                      |
| <b>Designer</b>                | E.G. van de Stadt                                    |
| <b>Displacement (t)</b>        | 9,54   |
| <b>Ballast (tonnes)</b>        | lead 3,7   |
| <b>Hull material</b>           | steel  |
| <b>Hull colour</b>             | green  |
| <b>Hull shape</b>              | S-bilged   |
| <b>Keel type</b>               | fin keel   |
| <b>Superstructure material</b> | mahogany   |
| <b>Deck material</b>           | wood   |
| <b>Deck finish</b>             | teak (2003)  |
| <b>Cockpit deck finish</b>     | teak   |
| <b>Window material</b>         | toughened glass                                      |
| <b>Fuel tank (litre)</b>       | steel 130  |
| <b>Freshwater tank (litre)</b> | steel 1x 200 + 1x 150                                |
| <b>Greywater tank (litre)</b>  | steel 45   |
| <b>Tiller</b>                  | yes  |
| <b>More info on paintwork</b>  | Hull sandblasted, complete paint job 2007/2008/2010. |

## ACCOMMODATION

|               |   |
|---------------|---|
| <b>Cabins</b> | 1 |
| <b>Berths</b> | 6 |



|                                |   |
|--------------------------------|---|
| <b>Interior</b>                | mahogany  |
| <b>Saloon</b>                  | yes   |
| <b>Headroom saloon (m)</b>     | 2,00 / 2,20   |
| <b>Heating</b>                 | Webasto Airtop 3500 (overhauled 2010)   |
| <b>Chart table</b>             | yes   |
| <b>Galley</b>                  | yes   |
| <b>Sink</b>                    | yes   |
| <b>Cooker</b>                  | calor gas (2007)  |
| <b>Fridge</b>                  | Engel 50 L.   |
| <b>Water pressure system</b>   | electrical  |
| <b>Manual and/or foot pump</b> | yes   |
| <b>Owners cabin</b>            | v-bed   |
| <b>Toilet</b>                  | yes   |
| <b>Toilet system</b>           | manual  |
| <b>Wash basin</b>              | yes   |
| <b>Extra info</b>              | Pilot berth - removed for more space. Gas installation of 2007, upholstery of 2007. |

## MACHINERY

|                            |        |
|----------------------------|--------|
| <b>No of engines</b>       | 1      |
| <b>Make</b>                | Yanmar |
| <b>Type</b>                | 4JH3E  |
| <b>HP</b>                  | 54,00  |
| <b>kW</b>                  | 39,69  |
| <b>Fuel</b>                | diesel |
| <b>Year installed</b>      | 2001   |
| <b>Maximum speed (kn)</b>  | 7      |
| <b>Cruising speed (kn)</b> | 6.00   |
| <b>Consumption (l/hr)</b>  | 3.00   |
| <b>Engine hours</b>        | 1050   |
| <b>Drive</b>               | shaft  |



|                                 |   |
|---------------------------------|---|
| <b>Gearbox</b>                  | hydraulic Newage PRM 2,4:1  |
| <b>Propeller type</b>           | Maxprop   |
| <b>Propeller blades</b>         | yes   |
| <b>Propeller shaft material</b> | stainless steel (2001)  |
| <b>Shaft lubrication</b>        | grease  |
| <b>Manual bilge pump</b>        | 1x  |
| <b>Electric bilge pump</b>      | 1x  |
| <b>Electrical installation</b>  | 12V/220V  |
| <b>Start battery</b>            | 1x 90 Ah (2001)   |
| <b>Service battery</b>          | 420 Ah (2005) + 2x 120 Ah.  |
| <b>Battery monitor</b>          | Victron BMV 350   |
| <b>Battery charger</b>          | Victron Pallas TH 50 Ah   |
| <b>Inverter</b>                 | Victron Phoenix 150 W   |
| <b>Shorepower</b>               | yes   |
| <b>Extra info</b>               | Alternator of 80 Ah with electric switch. Electric system overhauled/replaced in 2003 + 2007. |

## NAVIGATION

|                      |                                   |
|----------------------|-----------------------------------|
| <b>Depth sounder</b> | Raymarine ST60                    |
| <b>Log</b>           | Raymarine ST60                    |
| <b>Windset</b>       | Raymarine ST60                    |
| <b>VHF</b>           | Sailron C4901 (A1) + Atis/GMDSS   |
| <b>Autopilot</b>     | Raymarine 4000+                   |
| <b>Radar</b>         | Raytheon                          |
| <b>GPS</b>           | Raytheon RN300                    |
| <b>Navtex</b>        | Nasa Target Pro                   |
| <b>Extra info</b>    | All electric instruments of 2003. |

## EQUIPMENT

|                        |     |
|------------------------|-----|
| <b>Sprayhood</b>       | yes |
| <b>Boarding ladder</b> | yes |



|                                   |                               |
|-----------------------------------|-------------------------------|
| <b>Anchor</b>                     | 1x CQR 22 kg                  |
| <b>Anchor 2</b>                   | 1x Fortress Fx23              |
| <b>Anchor chain</b>               | Ca. 40 m                      |
| <b>Windlass</b>                   | Simpson & Lawrence            |
| <b>Sea railing</b>                | stainless steel               |
| <b>Life raft</b>                  | Arimar Neptune (1999)         |
| <b>Life raft (pers)</b>           | 6                             |
| <b>Last life raft survey</b>      | 3- 2007                       |
| <b>Spare parts</b>                | yes                           |
| <b>Radio-cd player</b>            | Sony                          |
| <b>Clock - barometer</b>          | yes                           |
| <b>Fire extinguisher</b>          | 2x 2 kg                       |
| <b>Latest extinguisher survey</b> | 2008                          |
| <b>Extra info</b>                 | Aries windvane (not mounted). |

## RIGGING

|                            |           |
|----------------------------|-----------|
| <b>Rigging</b>             | yawl      |
| <b>Brand mast</b>          | Proctor   |
| <b>Material mast</b>       | aluminum  |
| <b>Mainsail</b>            | yes       |
| <b>Mainsail cover</b>      | yes       |
| <b>Mizzen</b>              | yes       |
| <b>Mizzen staysail</b>     | yes       |
| <b>Jib</b>                 | yes       |
| <b>Genoa I</b>             | yes       |
| <b>Genoa II</b>            | yes       |
| <b>Spinnaker</b>           | yes       |
| <b>Trysail</b>             | yes       |
| <b>Stormjib</b>            | yes       |
| <b>Backstay adjuster</b>   | yes       |
| <b>Primary sheet winch</b> | 2x Lewmar |



**Secondary sheet winch**

2x Barton

**Halyard winches**

1x Andersen

**Spi-pole**

yes

**Extra info**

Half Winder (120m<sup>2</sup> + cover). Genua and main checked every year / reconditioned in 2013. The other sails are older. Standing rig: 1\*19 s/s of 2008 with Hasselfors s.s. tensions. Mast overhauled and painted 2007.



# VAN DE STADT TULLA III





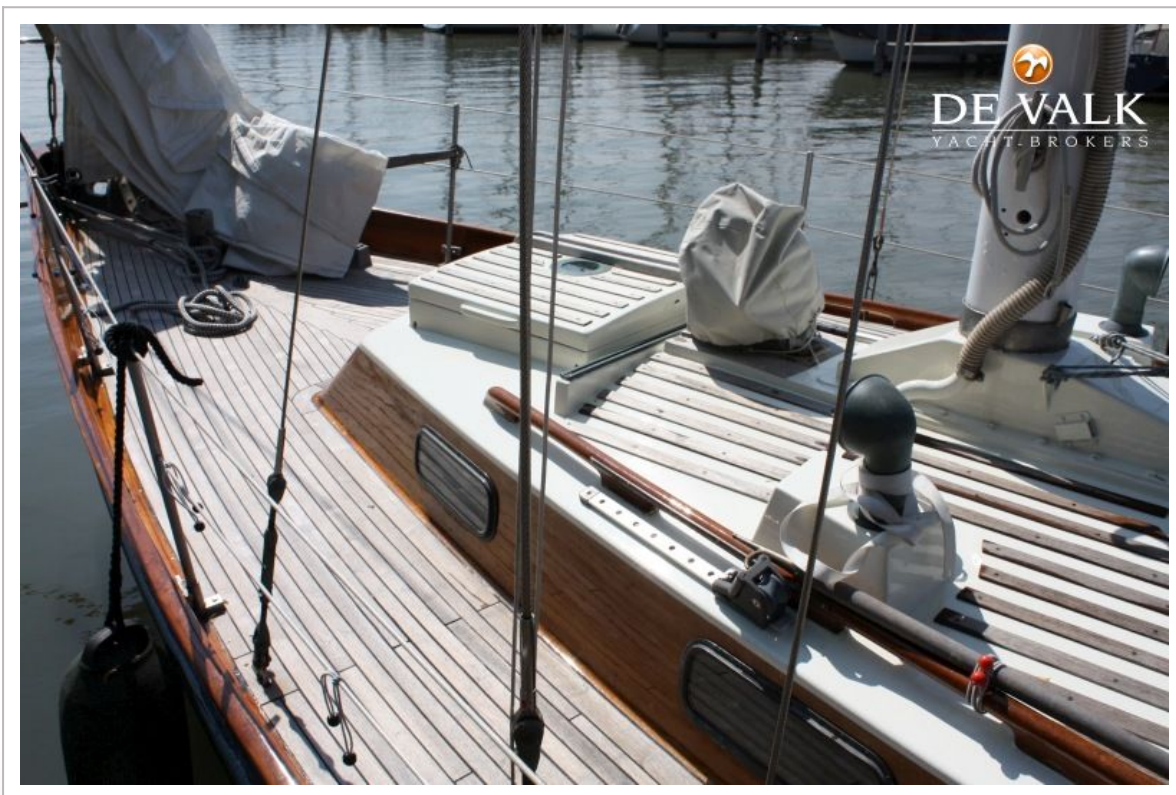
# VAN DE STADT TULLA III



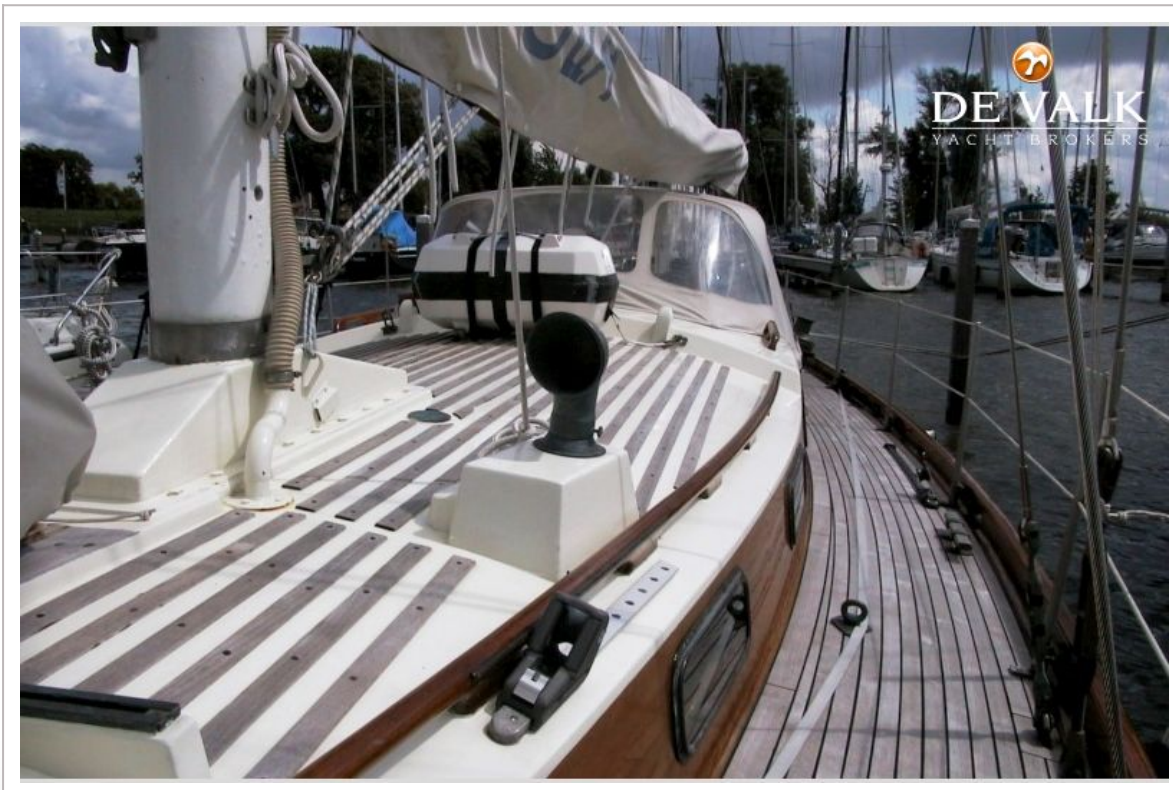
# VAN DE STADT TULLA III



# VAN DE STADT TULLA III



# VAN DE STADT TULLA III



# VAN DE STADT TULLA III



# VAN DE STADT TULLA III



# VAN DE STADT TULLA III



# VAN DE STADT TULLA III

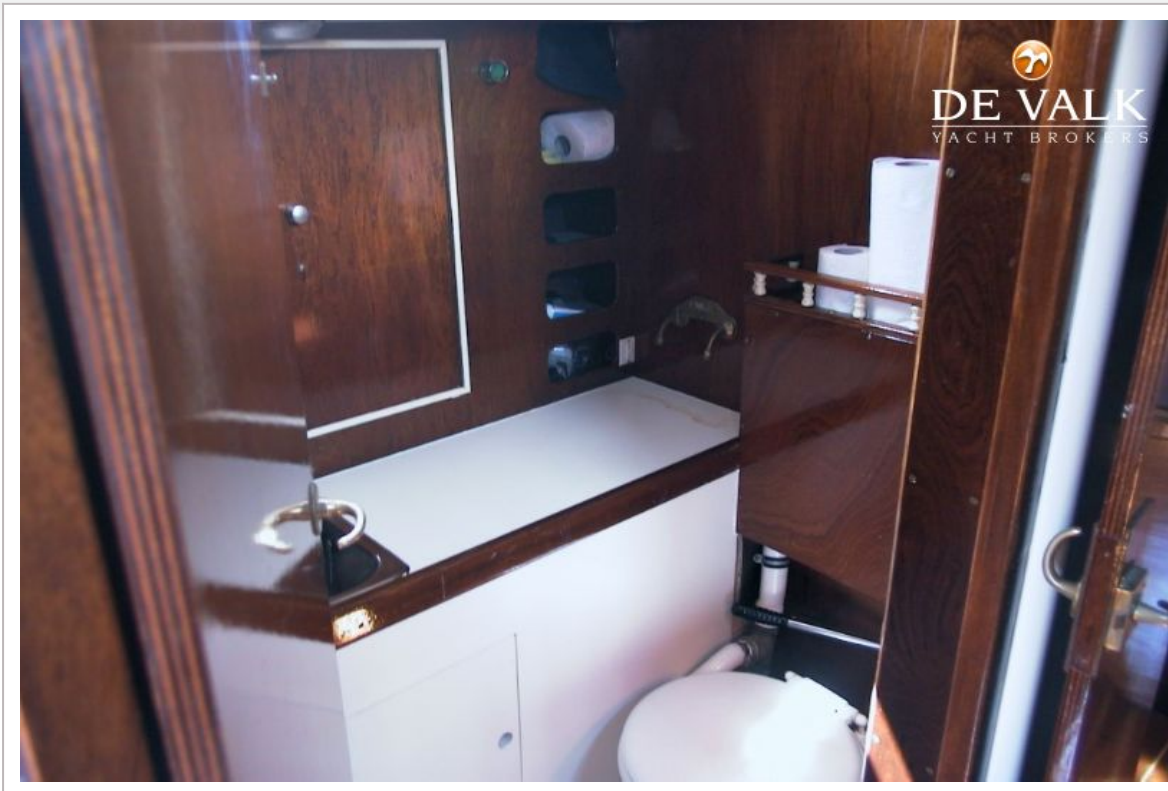




# VAN DE STADT TULLA III



# VAN DE STADT TULLA III



# VAN DE STADT TULLA III

