



GRAND BANKS 42 CLASSIC


DE VALK
YACHT BROKERS

GRAND BANKS 42 CLASSIC

BROKER'S COMMENTS

A true gentlemen's trawler model from the highly regarded Grand Banks 42 series. The Grand Banks motoryacht offers a spacious saloon and fully equipped owner's cabin with excellent ensuite facilities and a large aft deck outside. The two cabin layout also makes her ideal for long and comfortable family voyages. With her two reliable and powerful Ford Lehman diesels, she is easy to maneuver. Available for viewing by appointment.

Jochem Heijermans

SPECIFICATIONS

Dimensions	13.00 x 4.30 x 1.30 (m)	Builder	American Marine Ltd
Built	1988	Cabins	2
Material	GRP	Berths	6
Engine(s)	2 x Ford Lehman SP135 diesel	Hp/Kw	2 x 135.00 (hp), 99.22 (kw)
Asking price	sold (VAT)	Lying	elsewhere / Not at sales office

CONTACT

Sales office	De Valk Belgium	Telephone	+3258680218
Address	1401 PT Nieuwpoort Belgium	E-mail	belgium@devalk.nl

DISCLAIMER

These particulars are given in good faith as supplied but cannot be guaranteed.



GRAND BANKS 42 CLASSIC

GENERAL

Model	GRAND BANKS 42 CLASSIC
Type	motor yacht
LOA (m)	13,00
Beam (m)	4,30
Draft (m)	1,30
Air draft (m)	7,60
Air draft min (m)	4,30
Headroom (m)	2,00
Year built	1988
Builder	American Marine Ltd
Country	U.S.A.
Displacement (t)	18
Hull material	GRP
Hull colour	white
Hull shape	S-bilged
Keel type	long keel
Superstructure material	GRP
Rubbing strake	stainless steel
Deck material	teak
Deck finish	teak
Superstructure deck finish	teak
Cockpit deck finish	teak
Antifouling (year)	yes
Window frame	wood
Window material	tempered glass Safety glass
Deckhatch	yes
Portholes	wood
Flybridge	yes
Flybridge suncover	yes
Radar arch	yes



GRAND BANKS 42 CLASSIC

Mast can be lowered	manual
Fuel tank (litre)	steel 1120
Fuel tank 2 (litre)	steel 1120
Level indicator (fuel tank)	yes
Freshwater tank (litre)	steel 2x 337, 1x 340,
Wheel steering	cable steering

ACCOMMODATION

Cabins	2
Berths	6
Interior	teak
Floor	teak
Aft deck	yes
Pilot house	With twin entrance doors
Saloon	yes
Headroom saloon (m)	2,02
Heating	central heating Webasto
Heating 2	yes
Aft Cabin	yes
Galley	yes
Countertop	wood
Sink	stainless steel
Cooker	ceramic
Oven	yes
Extractor	yes
Fridge	With freezing compartment
Hot water system	220V + engine
Water pressure system	electrical
Dishwasher	Candy
Owners cabin	French bed Queen size
Bed length (m)	2,05 x 1,55



GRAND BANKS 42 CLASSIC

Wardrobe	hanging/drawers/shelves
Bathroom	en suite
Toilet	separate
Toilet system	electric
Wash basin	at the toilet
Shower	separate
Guest cabin 1	v-bed
Bed length (m)	2,05
Wardrobe	hanging/drawers/shelves
Bathroom	shared
Toilet	shared
Toilet system	manual
Wash basin	in the bathroom
Flybridge	yes

MACHINERY

No of engines	2
Make	Ford Lehman
Type	SP135
HP	135
kW	99.22
Fuel	diesel
Maximum speed (kn)	8
Cruising speed (kn)	7
Consumption (l/hr)	12
Engine hours	BB 3835 SB 3810
Engine cooling system	freshwater heat exchanger
Drive	stern
Engine controls	bowden cable
Gearbox	hydraulic
Exhaust	watercooled



GRAND BANKS 42 CLASSIC

Propeller type	fixed
Shaft lubrication	water
Electric bilge pump	yes
Electrical installation	12V/220V
Generator	silent separator Onan 6Kw
Start battery	yes
Service battery	12V/230Ah (2021)
Battery monitor	Victron
Battery charger/inverter	Victron 12V/3000W/120Ah
Shorepower	with cable

NAVIGATION

Compass	yes
Compass on flybridge	(defect)
Depth sounder/log	Focus + repeater on flybridge
VHF	yes
Rudder angle indicator	yes
Plotter/GPS	VDO Logic MAP 10
AIS receiver	yes
Navigation lights	yes

EQUIPMENT

Fixed windscreen	yes
Bimini	yes
Window cover	yes
Cockpit cushions	yes
Bathing platform	yes
Boarding ladder	stainless steel
Anchor	yes
Anchor chain	40m
Windlass	electrical



GRAND BANKS 42 CLASSIC

Capstan	yes
Deck wash	yes
Sea railing	wood
Grab rail (superstructure)	stainless steel
Railing side opening gates	2x
Pushpit	yes
Pulpit	yes
Wiper	yes
Radio	yes



GRAND BANKS 42 CLASSIC



GRAND BANKS 42 CLASSIC



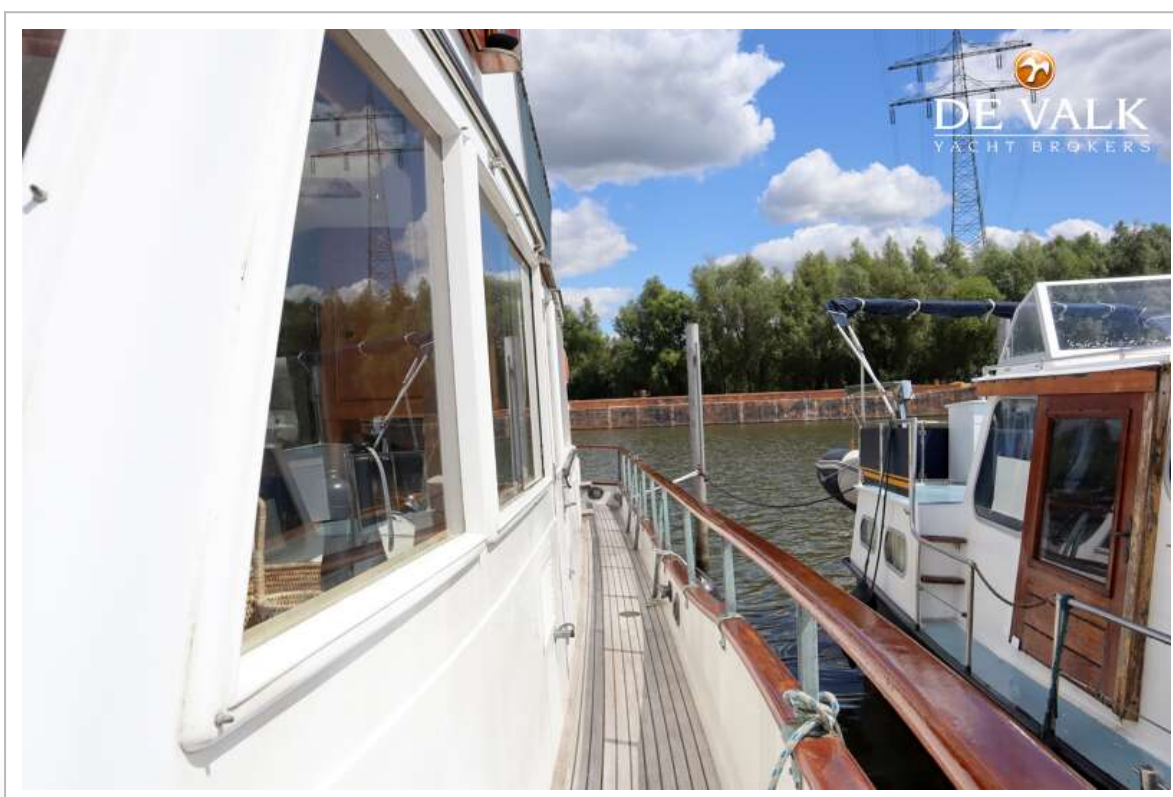
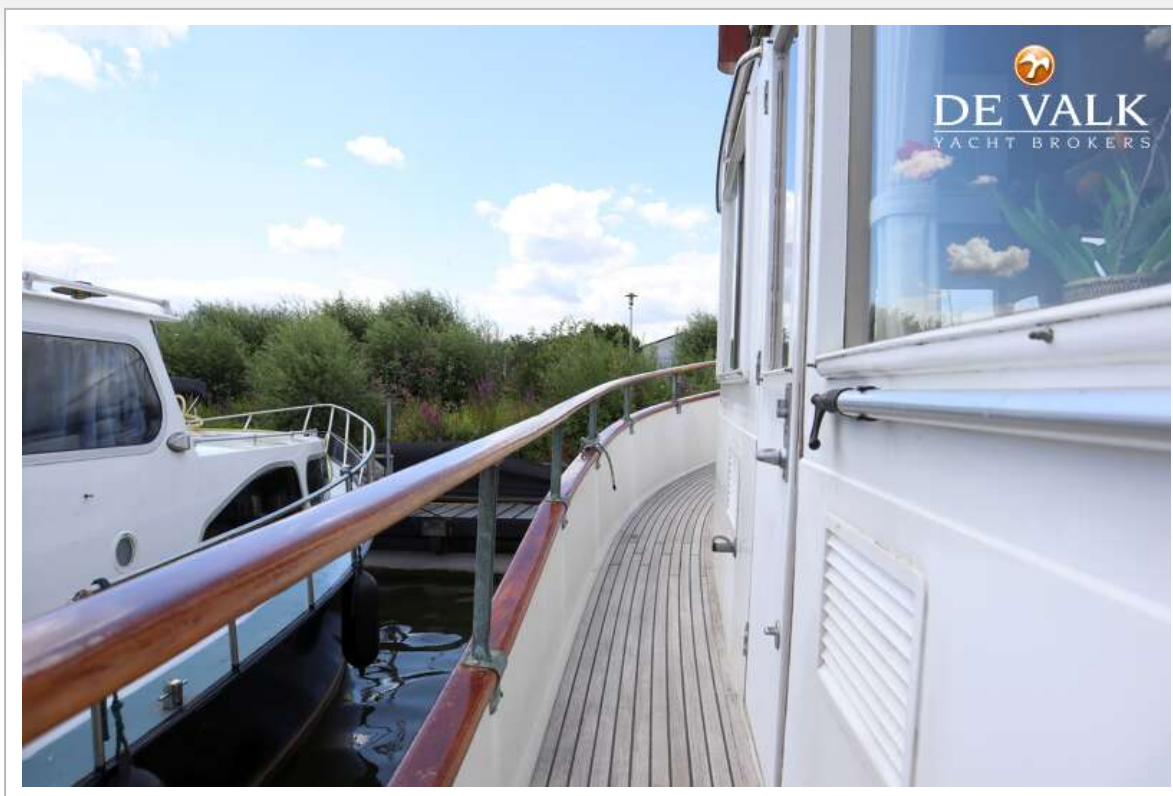
GRAND BANKS 42 CLASSIC



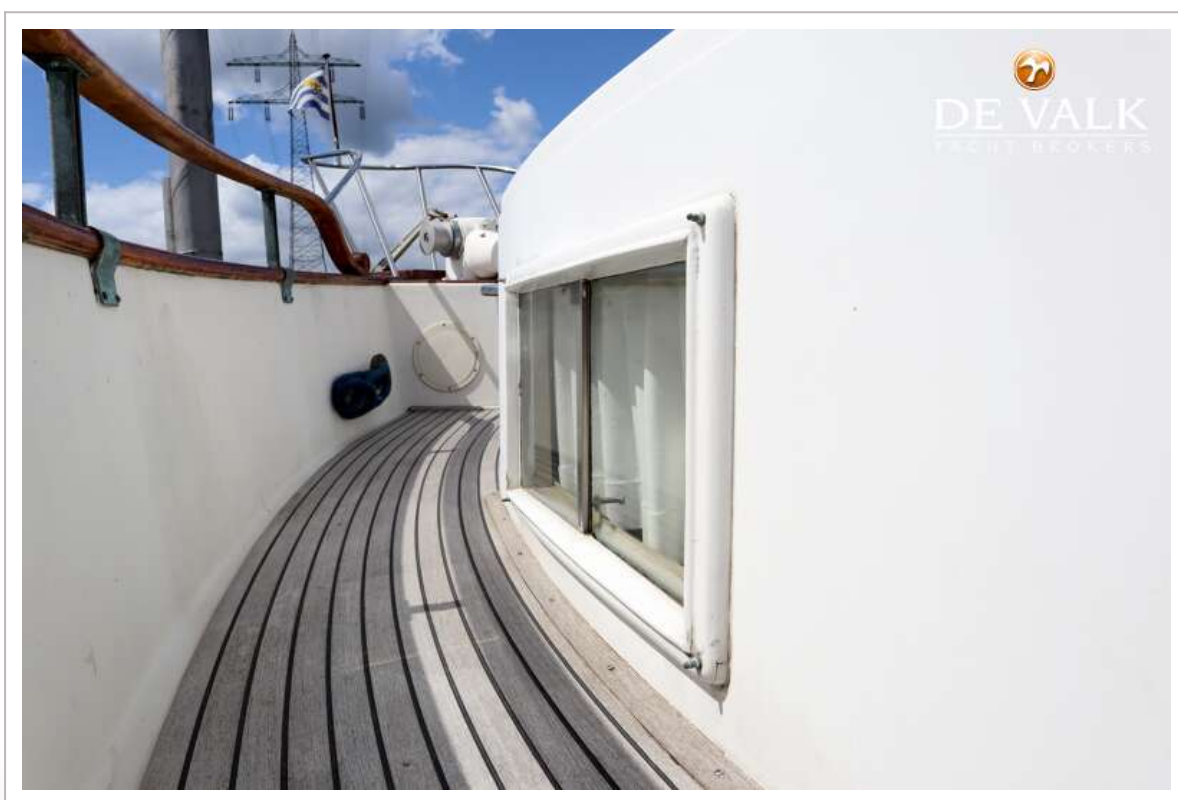
GRAND BANKS 42 CLASSIC



GRAND BANKS 42 CLASSIC



GRAND BANKS 42 CLASSIC



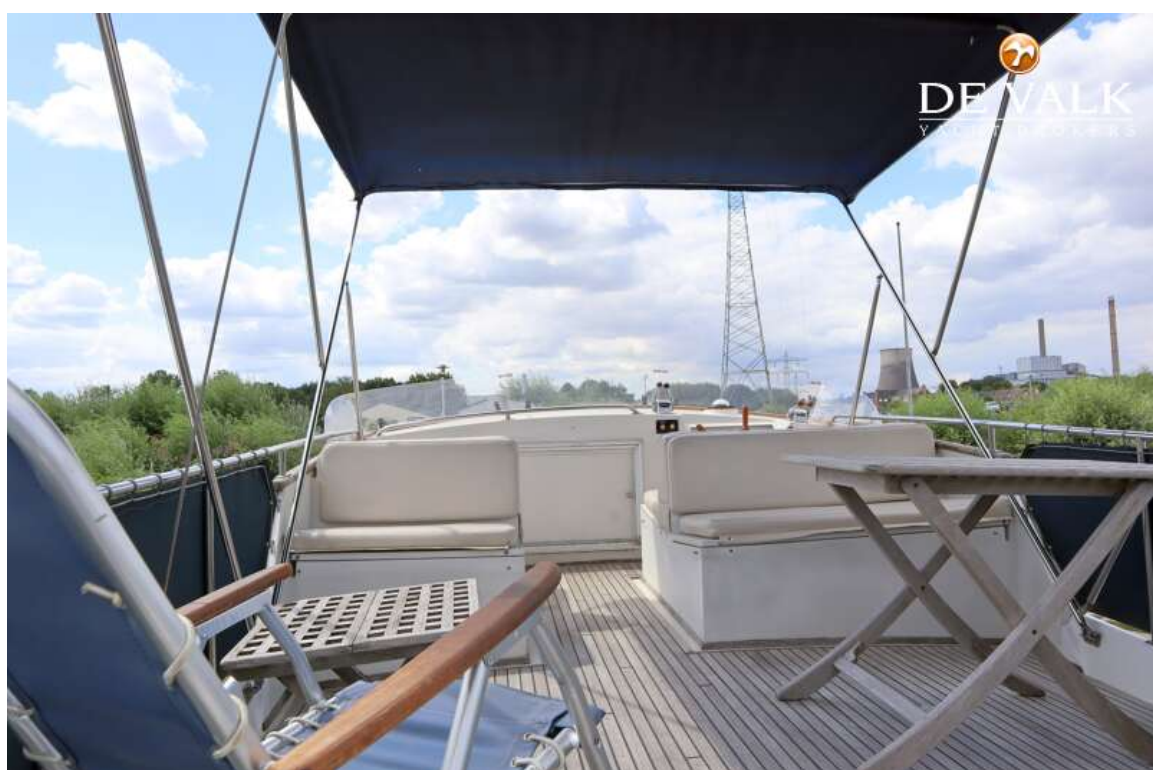
GRAND BANKS 42 CLASSIC



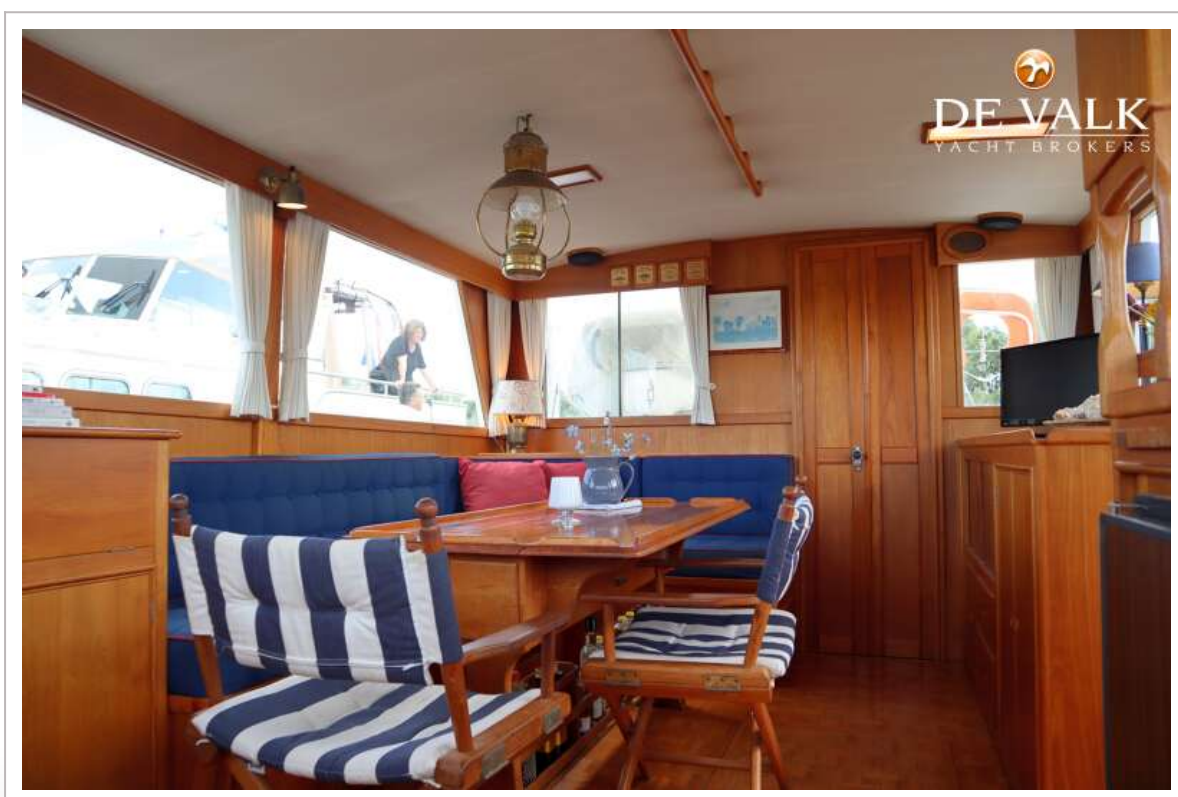
GRAND BANKS 42 CLASSIC



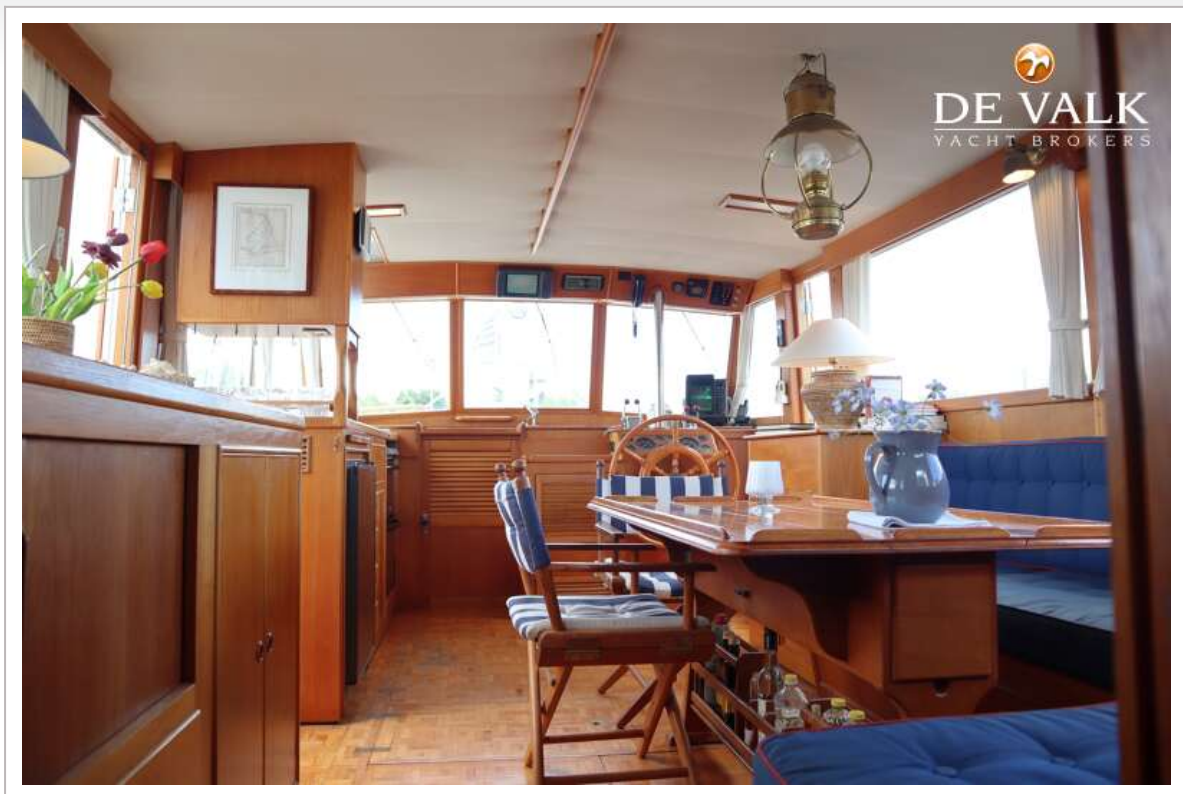
GRAND BANKS 42 CLASSIC



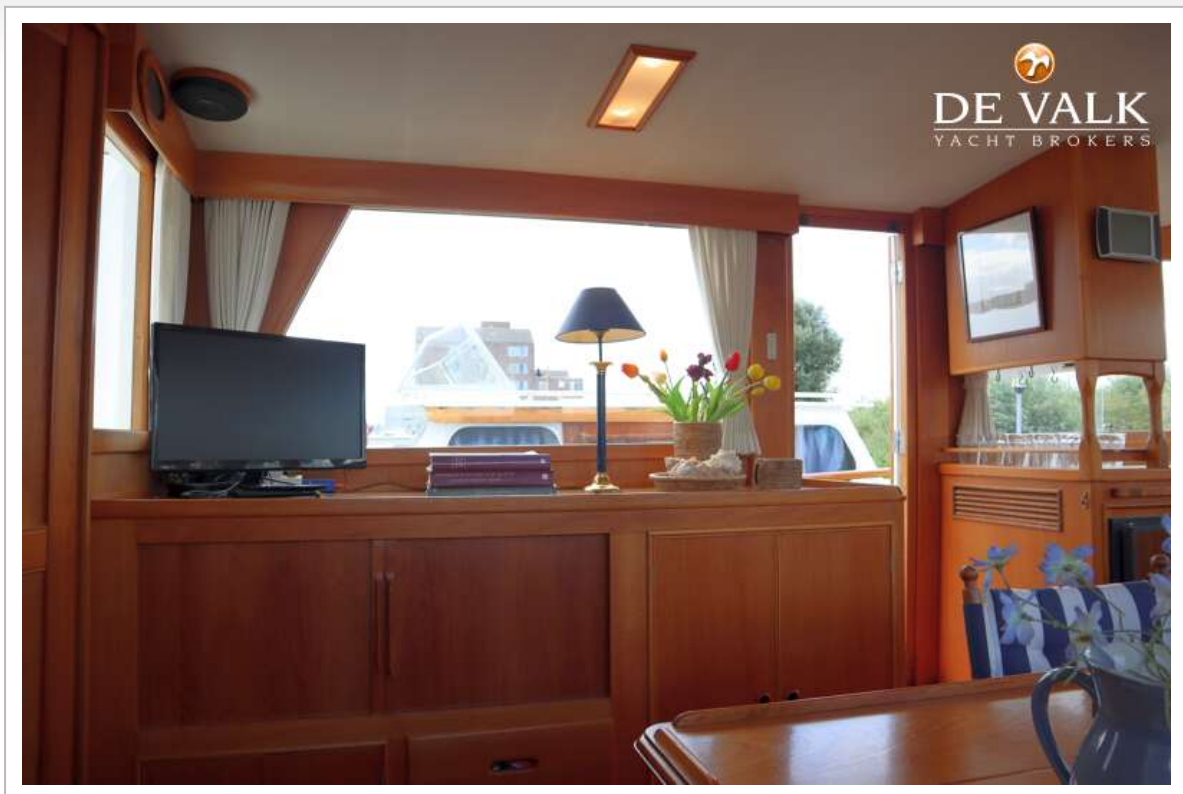
GRAND BANKS 42 CLASSIC



GRAND BANKS 42 CLASSIC



GRAND BANKS 42 CLASSIC



GRAND BANKS 42 CLASSIC



GRAND BANKS 42 CLASSIC



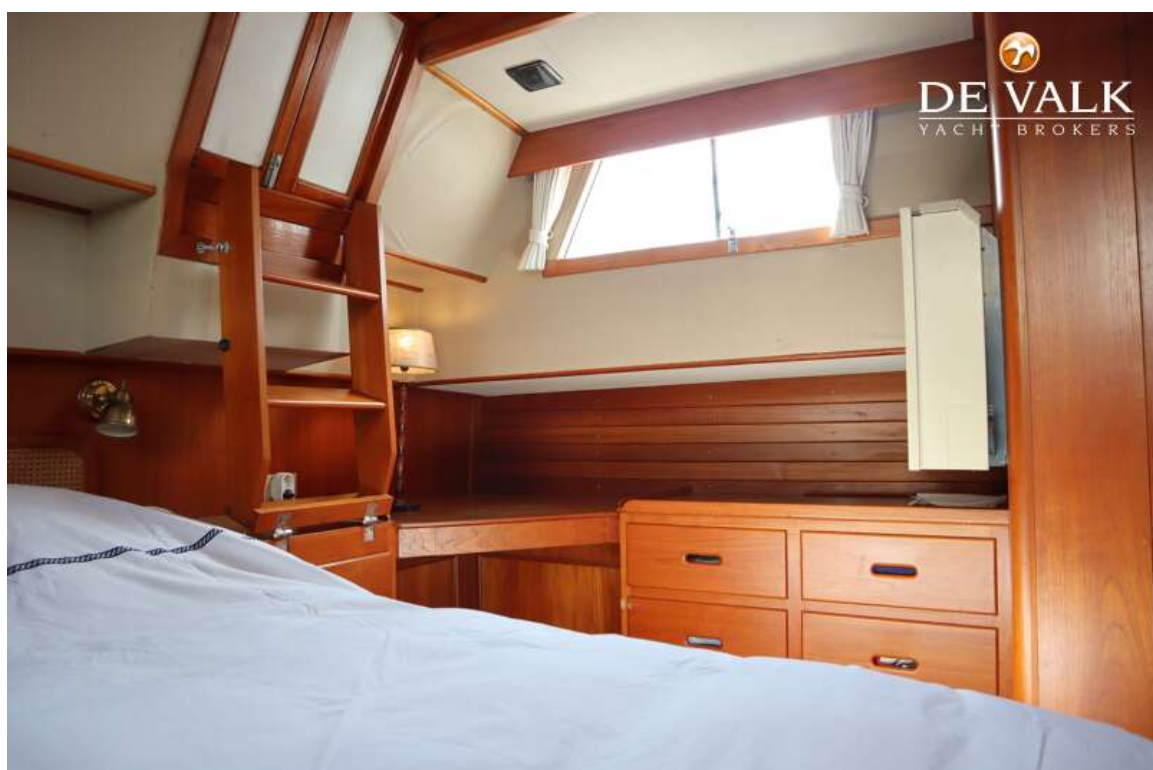
GRAND BANKS 42 CLASSIC



GRAND BANKS 42 CLASSIC



GRAND BANKS 42 CLASSIC



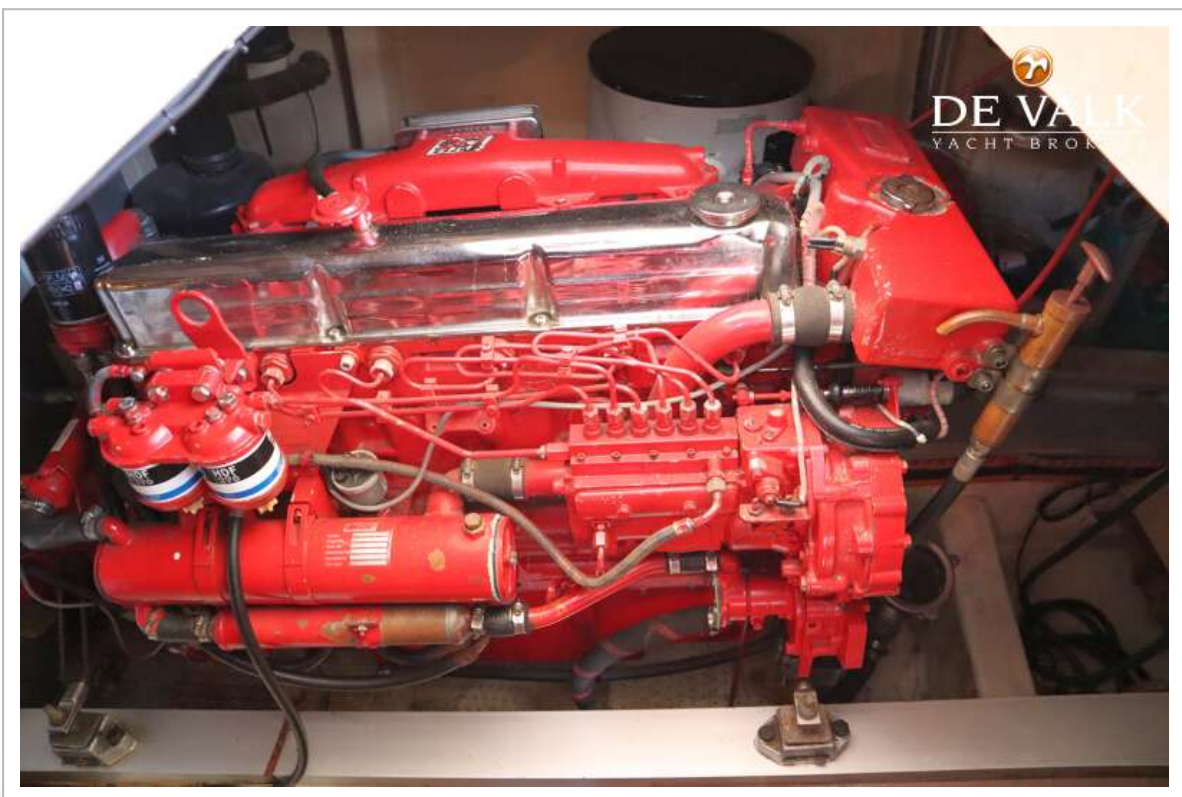
GRAND BANKS 42 CLASSIC



GRAND BANKS 42 CLASSIC



GRAND BANKS 42 CLASSIC



GRAND BANKS 42 CLASSIC



GRAND BANKS 42 CLASSIC

