



DE VALK  
YACHT BROKERS



## STENTOR 1800



DE VALK  
YACHT BROKERS

# STENTOR 1800

## BROKER'S COMMENTS

The Stentor 18 is an extremely comfortable yacht in all possible ways. With her professional steering position this yacht will perform beautifully on open water as well as being easily to maneuver on inland waters or harbors. Thanks to the great capacity of her fuel tanks (8000 liters) and her water tanks (2500 liters) the Stentor 18 is suited for long distance cruising and long stays on board. The Stentor 1800 is equipped with hydraulic bow- and stern thruster, central heating and air-conditioning etc. She is in a very good condition. Viewing is possible on appointment.

*Johan Schootstra*

## SPECIFICATIONS

<b>Dimensions</b>	17.90 x 5.00 x 1.35 (m)	<b>Builder</b>	Stentor Yachts
<b>Built</b>	2002	<b>Cabins</b>	2
<b>Material</b>	Steel	<b>Berths</b>	4
<b>Engine(s)</b>	2 x Perkins Sabre M130C Diesel	<b>Hp/Kw</b>	2 x 130.00 (hp), 95.55 (kw)
<b>Asking price</b>	sold (VAT )	<b>Lying</b>	contact Hindeloopen

## CONTACT

<b>Sales office</b>	De Valk Hindeloopen B.V.	<b>Telephone</b>	+31 514 52 40 00
<b>Address</b>	Oosterstrand 1 8713 JS Hindeloopen NL	<b>E-mail</b>	hindeloopen@devalk.nl

## DISCLAIMER

These particulars are given in good faith as supplied but cannot be guaranteed.



# STENTOR 1800

## GENERAL

Model	STENTOR 1800
Type	motor yacht
LOA (m)	17,90
LWL (m)	16,33
Beam (m)	5,00
Draft (m)	1,35
Air draft (m)	4,05
Headroom (m)	2,00
Year built	2002
Builder	Stentor Yachts
Country	The Netherlands
Designer	Vripack
Displacement (t)	42
Ballast (tonnes)	yes
CE norm	A
Hull material	steel
Hull colour	blue
Hull shape	round-bilged
Superstructure material	steel
Rubbing strake	stainless steel
Deck material	steel
Deck finish	Aluminium plates
Superstructure deck finish	paint
Cockpit deck finish	teak
Dorades	2x Stainless steel
Window frame	aluminium
Window material	double glazing
Deckhatch	2x Gebo
Insulation	foam
Mast can be lowered	hydraulic



# STENTOR 1800

Fuel tank (litre)	stainless steel 7900 in 6 tanks
Level indicator (fuel tank)	yes
Fuel daytank (litre)	100
Level indicator (daytank)	yes
Freshwater tank (litre)	2500 in two tanks
Level indicator (freshwater)	yes
Blackwater tank (litre)	400
Level indicator (blackwater)	yes
Greywater tank (litre)	400
Level indicator (greywater)	yes
Inside helm position	hydraulic Robertson FU35
Outside helm position	hydraulic Wheelsteering + Robertson FU35
Emergency tiller	yes
More info on paintwork	The whole ship has been professionally painted in 2010

## ACCOMMODATION

Cabins	2
Berths	4
Interior	mahogany
Floor	teak and holly
Aft deck	yes
Saloon	yes
Headroom saloon (m)	1,96
Heating	central hot water Maritime Booster
Air-conditioning	Climma Marine
Aft Cabin	Owners Cabin
Dining room	yes
Galley	yes
Countertop	corian
Sink	stainless steel
Cooker	electric Siemens - 4 burner



# STENTOR 1800

Oven	Siemens - Microwelle Plus
Extractor	Siemens
Microwave	Siemens - Microwelle Plus
Fridge	AEG 185L
Freezer	with 3 drawers Liebherr
Hot water system	220V + engine
Water pressure system	electrical
Dishwasher	Siemens
Owners cabin	French bed
Bed length (m)	2+
Wardrobe	hanging/drawers/shelves
Bathroom	en suite
Toilet	Tecma
Toilet system	electric
Wash basin	yes
Shower	yes
Guest cabin 1	French bed
Bed length (m)	2
Wardrobe	hanging and drawers
Bathroom	separate
Toilet	Tecma
Toilet system	electric
Wash basin	yes
Shower	yes
Washing machine	+ Dryer - Miele

## MACHINERY

No of engines	2
Make	Perkins Sabre
Type	M130C
HP	130,00



# STENTOR 1800

<b>kW</b>	95,55
<b>Fuel</b>	diesel
<b>Year installed</b>	2002
<b>Maximum speed (kn)</b>	8
<b>Cruising speed (kn)</b>	7
<b>Consumption (l/hr)</b>	23L @ 7.5 kn
<b>Engine hours</b>	2360
<b>Engine cooling system</b>	freshwater heat exchanger
<b>Drive</b>	shaft
<b>Engine controls</b>	electrical
<b>Gearbox</b>	hydraulic
<b>Bowthruster</b>	hydraulic
<b>Sternthruster</b>	hydraulic
<b>Exhaust</b>	watercooled
<b>Thrust bearing</b>	Centaflex
<b>Propeller type</b>	fixed
<b>Propeller blades</b>	4
<b>Propeller shaft material</b>	stainless steel
<b>Shaft lubrication</b>	water
<b>Manual bilge pump</b>	yes
<b>Electric bilge pump</b>	5
<b>Electrical installation</b>	24 / 12 / 220 V
<b>Generator</b>	Fischer Panda 13,5 Kw
<b>Start battery</b>	2x 100 Amp
<b>Service battery</b>	8x 2V - total 800 Amp
<b>Generator battery</b>	1x 74 Amp
<b>Battery monitor</b>	yes
<b>Battery charger</b>	Mastervolt 24/100
<b>Inverter</b>	Mastervolt Mass sine 24/5000
<b>Shorepower</b>	with cable
<b>Insulation transformer</b>	yes
<b>Stabilizers</b>	fin Koopnautic



## NAVIGATION

Compass	2x Simrad IS15 compass
Depth sounder	2x Simrad IS15 Combi
Windset	2x Simrad IS15 Wind
VHF	Shipmate RS8400
VHF handheld	Icom
Autopilot	Simrad AP20 & Robertson AP20
Radar/GPS/plotter	2x Simrad NSE12
Navtex	Nav 4 Plus
AIS receiver	Simrad AI50
Camera	yes
Searchlight	yes
Loudhailer	Raytheon Ray 430
Extra info	2x Robertson FU35 steering

## EQUIPMENT

Cockpit table	yes
Cockpit chairs	yes
Bathing platform	yes
Boarding ladder	stainless steel
Deck shower	yes
Anchor	Danforth 60kg - Stainless steel
Anchor chain	70mtr. Stainless steel
Anchor 2	Danforth 60kg - Stainless steel
Anchor chain	70mtr. Stainless steel
Windlass	hydraulic Vetus
Capstan	yes
Deck wash	yes
Deck crane	hydraulic
Sea railing	stainless steel
Grab rail (superstructure)	stainless steel



# STENTOR 1800

Railing side opening gates	yes
Pushpit	yes
Pulpit	yes
Wiper	6x double arms
Horn	air pressure
Fenders	yes
Mooring lines	yes
Tools	yes
TV	Sharp
TracVision ball	KVH TracVision G4
Radio-cd player	Philips
DVD player	Philips
Cockpit speakers	yes
Speakers in salon	yes
Clock - barometer	yes
Fire extinguisher	yes
Extinguisher in engine room	yes





# STENTOR 1800



# STENTOR 1800

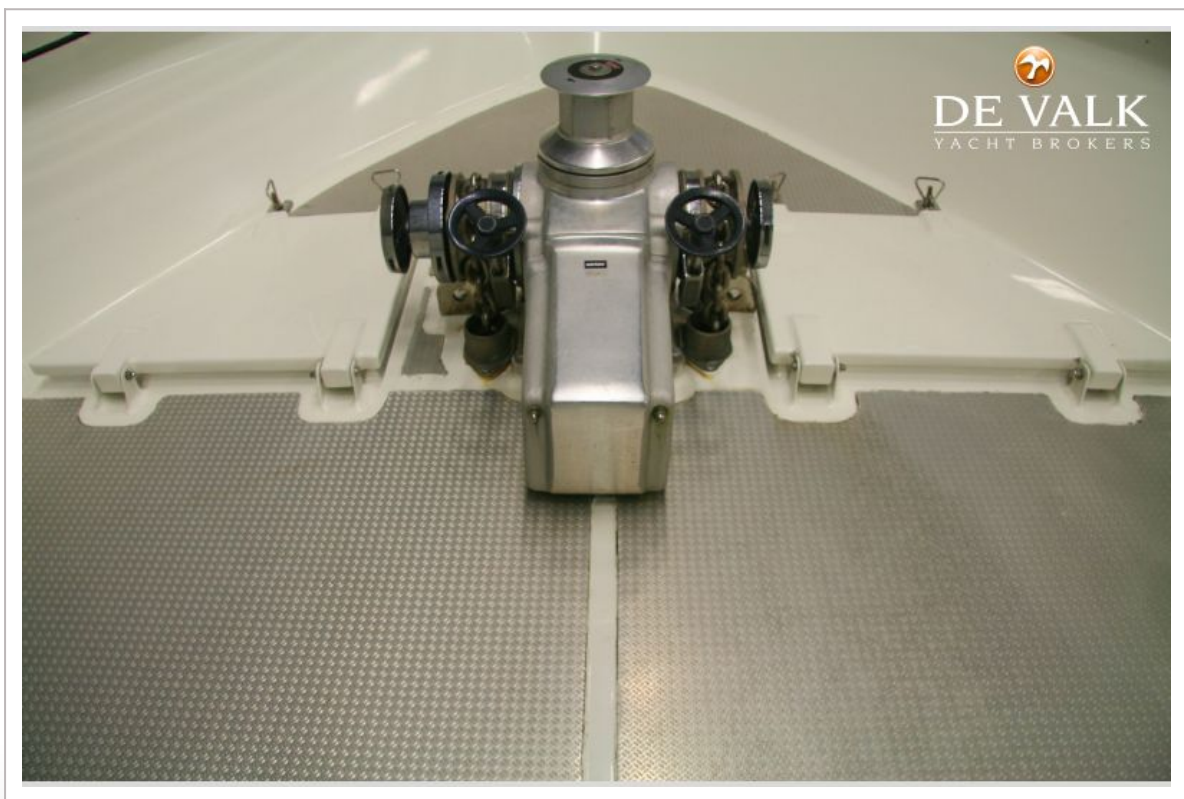
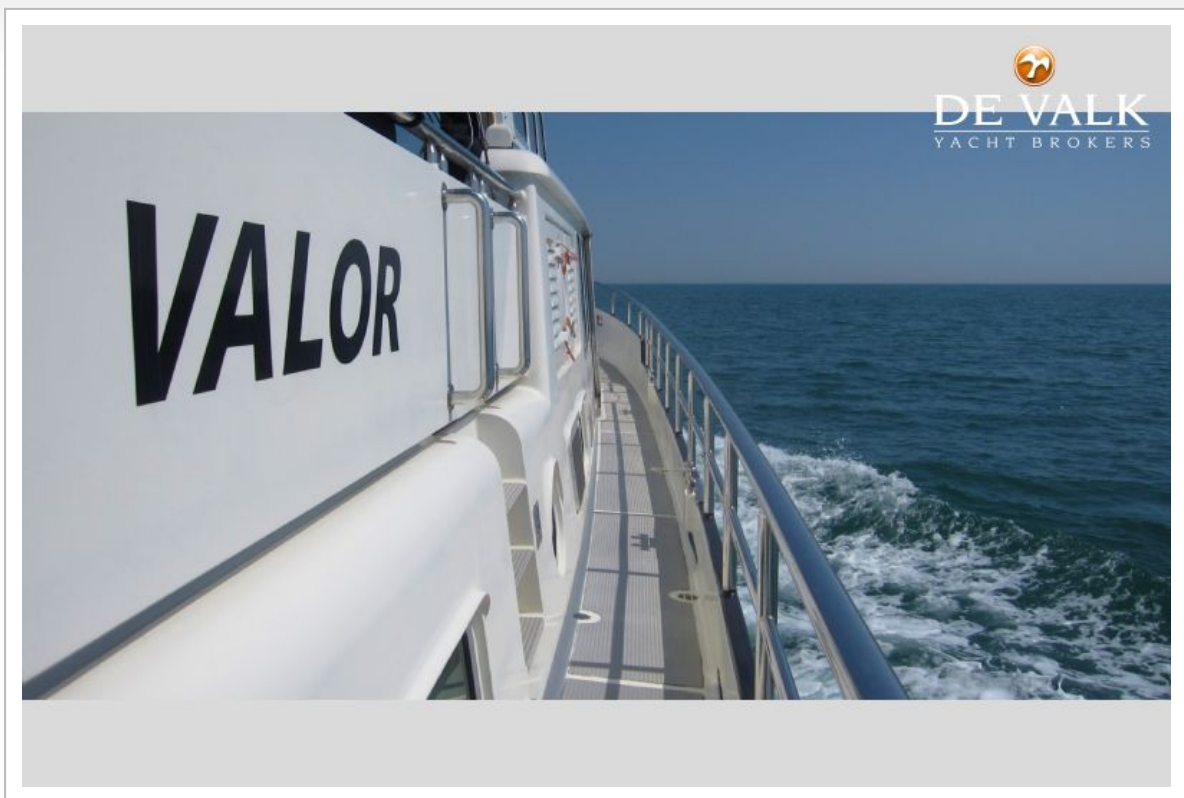




# STENTOR 1800



# STENTOR 1800





# STENTOR 1800



# STENTOR 1800

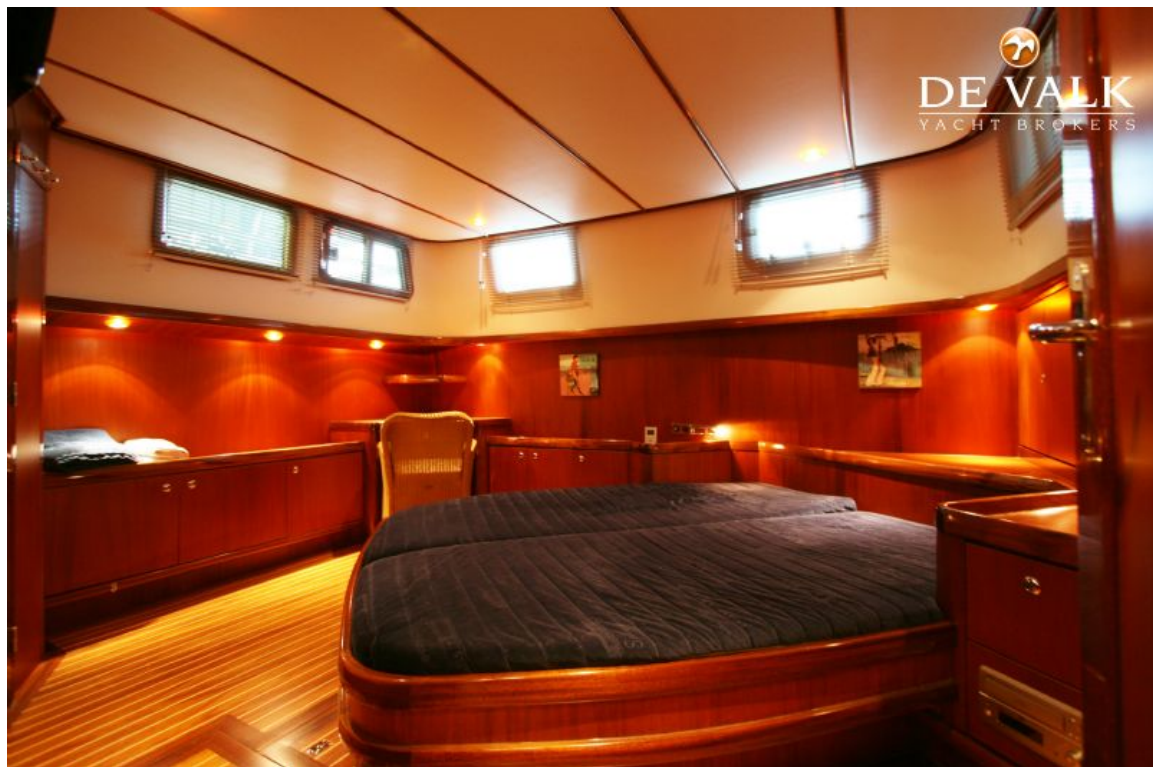




# STENTOR 1800

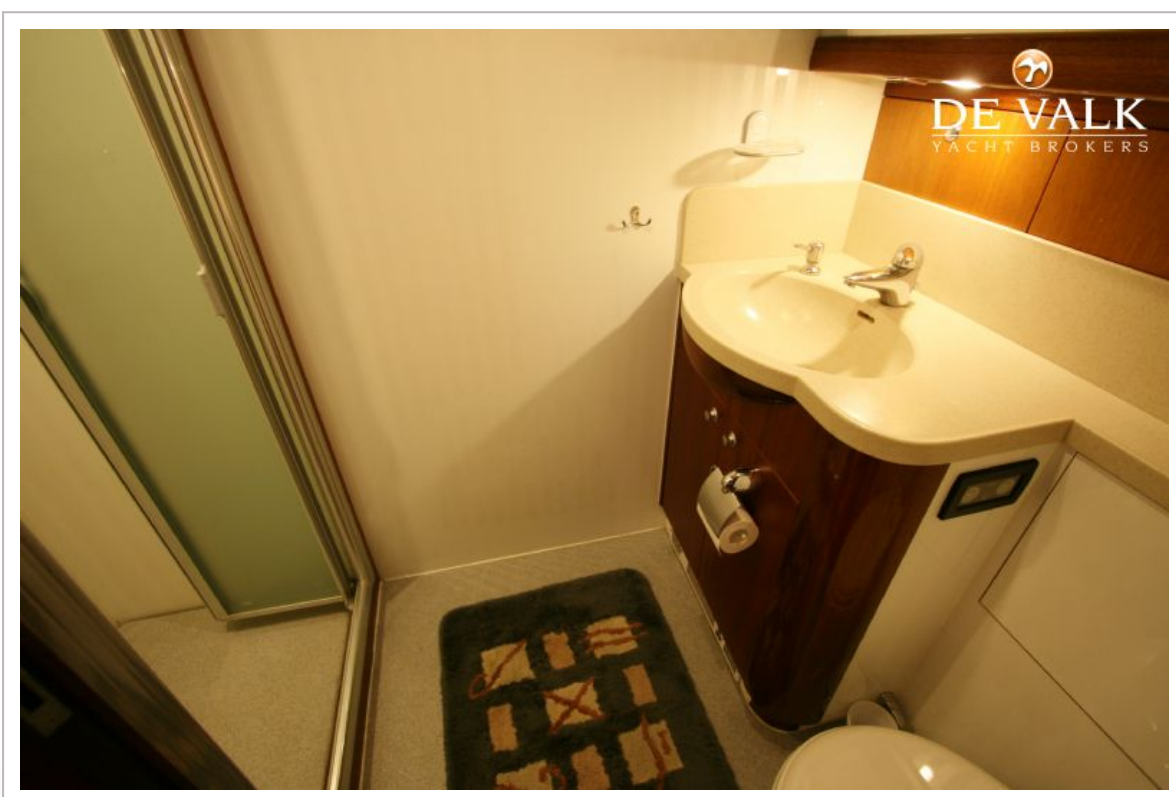
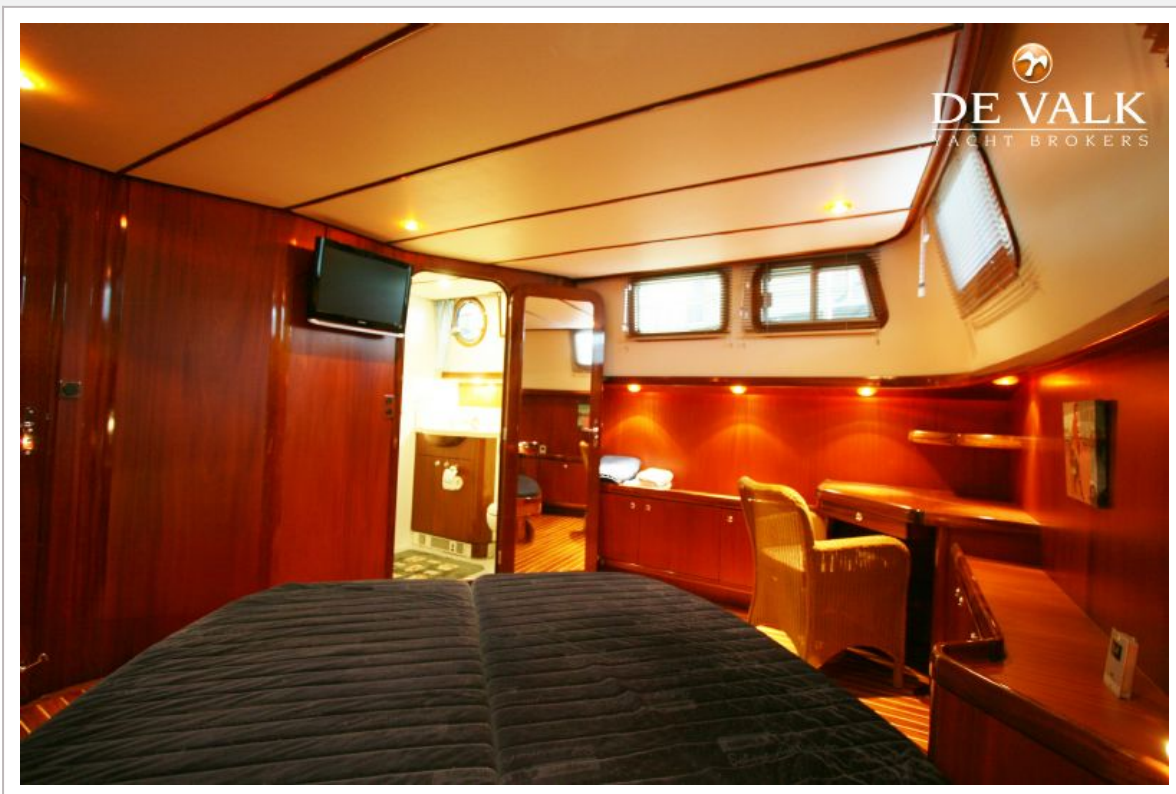


# STENTOR 1800

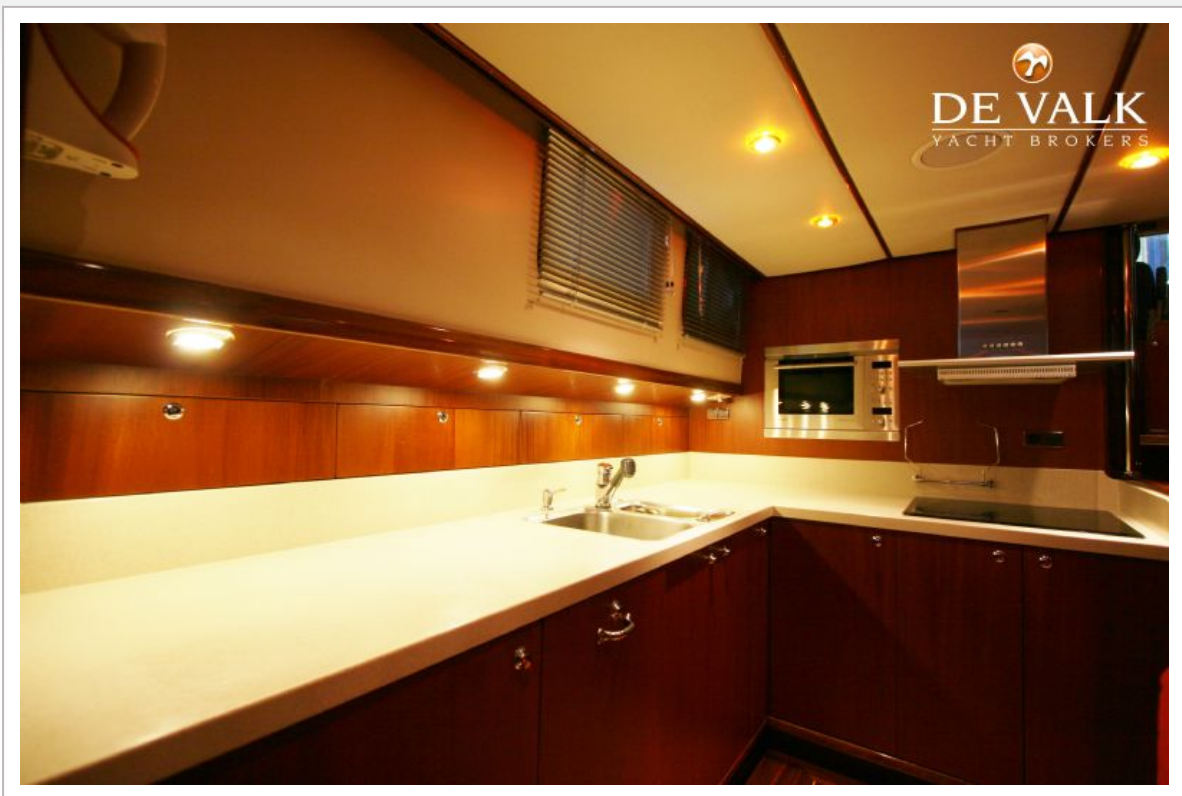




# STENTOR 1800

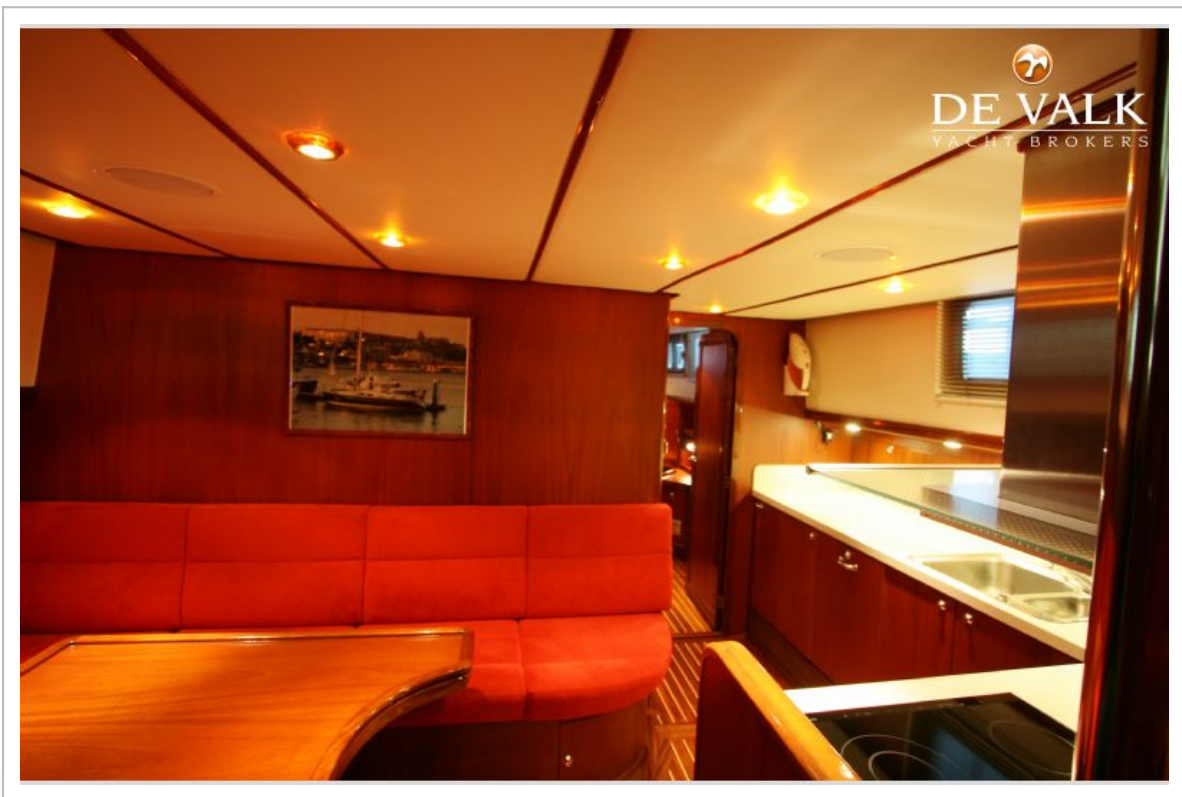
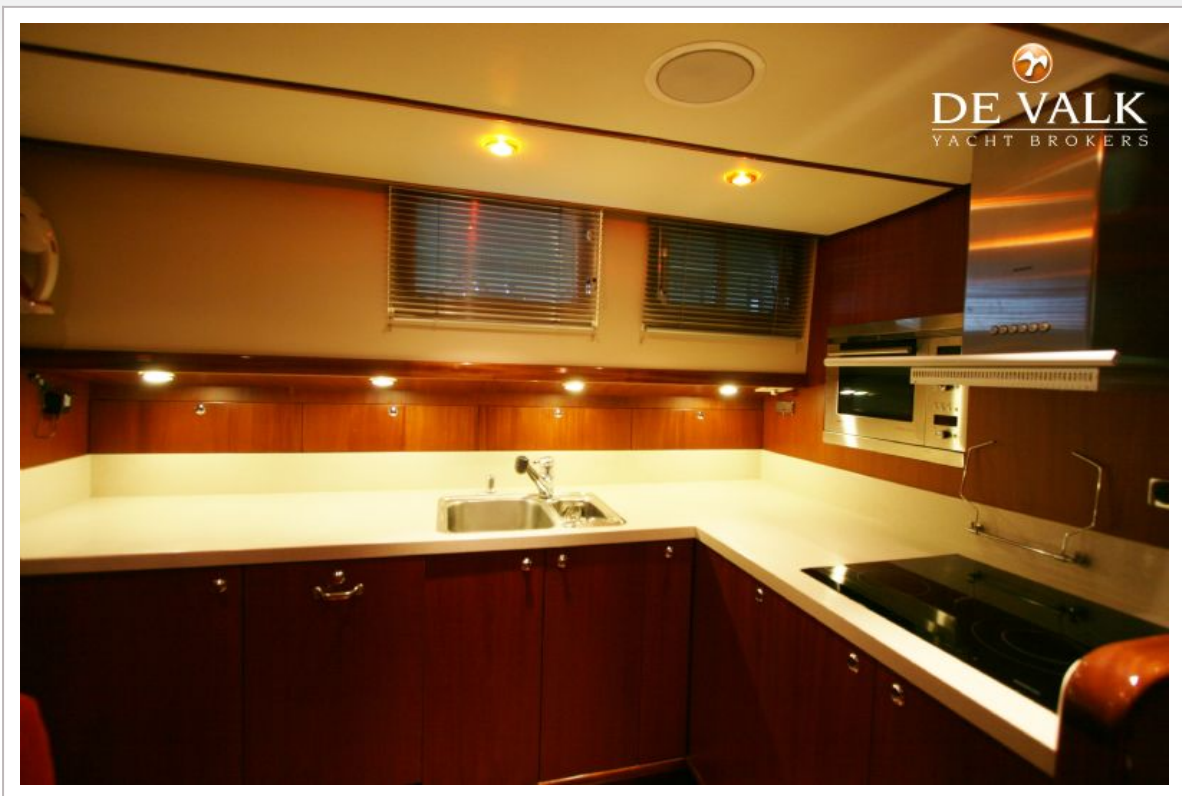


# STENTOR 1800





# STENTOR 1800

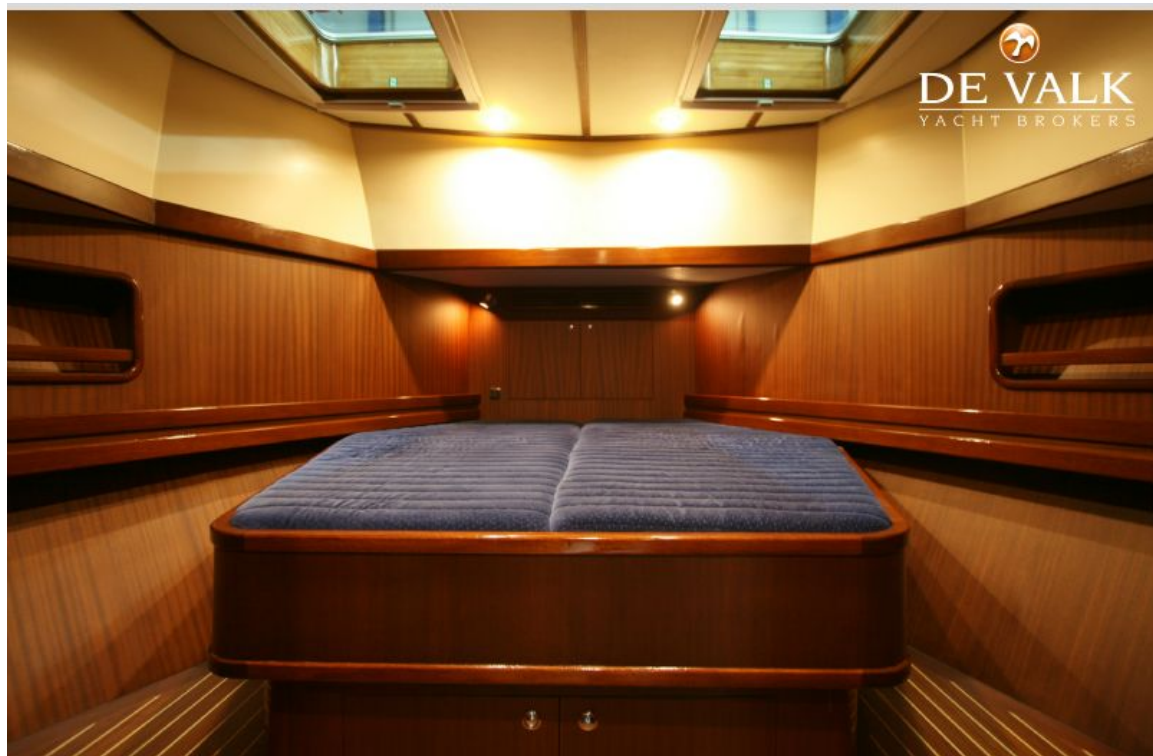


# STENTOR 1800





# STENTOR 1800



# STENTOR 1800

