



VRIPACK TRAWLER



DE VALK
YACHT BROKERS

VRIPACK TRAWLER

BROKER'S COMMENTS

This steel Vripack Trawler 14.50 is built and finished to the highest standard for her first and only owner. Built in 2006 and launched in 2008. Easy to handle with a small crew due her hydraulic bow- and sternthruster. A must to see this beautiful trawler. You are very welcome in our sales harbor in Sneek to visit this Vripack Trawler "Blue Spirit".

Pieter Bosma

SPECIFICATIONS

Dimensions	14.50 x 4.35 x 1.35 (m)	Builder	N. Dijkstra Jachtservice Harlingen
Built	2008	Cabins	2
Material	Steel	Berths	6
Engine(s)	1 x Vetus Deutz DT-66 diesel	Hp/Kw	170.00 (hp), 124.95 (kw)
Asking price	sold (VAT)	Lying	at sales office

CONTACT

Sales office	De Valk Sneek	Telephone	+31 (0)515 42 80 30
Address	Zwolsmanweg 7 8606 KC Sneek NL	E-mail	sneek@devalk.nl

DISCLAIMER

These particulars are given in good faith as supplied but cannot be guaranteed.



VRIPACK TRAWLER

GENERAL

Model	VRIPACK TRAWLER
Type	motor yacht
LOA (m)	14,50
Beam (m)	4,35
Draft (m)	1,35
Air draft (m)	3,75
Headroom (m)	2,00
Year built	2008
Builder	N. Dijkstra Jachtservice Harlingen
Country	The Netherlands
Designer	Vripack
Displacement (t)	27
CE norm	B
Hull material	steel
Hull colour	blue
Hull shape	multi hard chine
Superstructure material	aluminium
Rubbing strake	stainless steel
Deck material	steel
Deck finish	anti-slip paint
Cockpit deck finish	anti-slip paint
Window frame	aluminium
Window material	double glazing
Flybridge	yes
Flybridge cover	yes
Radar arch	collapsible
Mast can be lowered	hydraulic
Fuel tank (litre)	steel 2850
Freshwater tank (litre)	stainless steel 1800
Blackwater tank (litre)	polyethylene 850



Wheel steering	hydraulic
Inside helm position	yes
Flybridge helm position	yes

ACCOMMODATION

Cabins	2
Berths	6
Interior	teak
Floor	parquet
Open cockpit	yes
Pilot house	yes
Saloon	yes
Heating	central heating Kabola b17 tap
Air-conditioning	HFL coolmax airco
Dinette	yes
Opening door to cockpit	yes
Galley	yes
Countertop	corian
Sink	stainless steel
Cooker	electric Siemens 2-burner
Extractor	yes
Microwave	microwave/oven combi Sharp
Fridge	with freezer compartment 2x AEG 145 l.
Hot water system	on central heating
Water pressure system	yes
Owners cabin	French bed
Wardrobe	
Bathroom	shared
Toilet	
Toilet system	electric
Wash basin	in the bathroom



VRIPACK TRAWLER

Shower	
Guest cabin 1	double bed + single bed
Wardrobe	yes
Washing machine	Indesit combi
Dryer	Indesit combi

MACHINERY

No of engines	1
Make	Vetus Deutz
Type	DT-66
HP	170,00
kW	124,95
Fuel	diesel
Year installed	2008
Maximum speed (kn)	9
Cruising speed (kn)	7
Consumption (l/hr)	7
Engine hours	653
Engine cooling system	freshwater heat exchanger
Drive	shaft
Engine controls	electrical
Gearbox	hydraulic ZF gearbox
Bowthruster	hydraulic 160 KGF
Sternthruster	hydraulic 160 KGF
Exhaust	watercooled
Thrust bearing	Python
Propeller type	fixed
Propeller blades	4-bladed
Propeller shaft material	stainless steel
Shaft lubrication	water
Electric bilge pump	3x



VRIPACK TRAWLER

Generator	Vetus 5,7 KVA 1500 omw/min
Start battery	1 x 165 amp
Service battery	8 x 230 amp
Generator battery	1x 165 amp
Battery monitor	Victron BMV-501 and Victron multi control
Battery charger/inverter	Victron Multi plus Combi 24/3000/70
Shorepower	with cable
Insulation transformer	Victron 3600

NAVIGATION

Electric compass	yes
Depth sounder	yes
Log	yes
Fish finder	Lowrance X102
VHF	Uniden Oceanis DSC
Autopilot	Geonav AP210
Radar	Furuno Navnet
GPS	Geonav multi
Plotter	Geonav mulit
Camera	with LCD screen
Searchlight	yes

EQUIPMENT

Cockpit cushions	yes
Cockpit table	yes
Cockpit chairs	yes
Bathing platform	yes
Boarding ladder	stainless steel
Transom door	yes
Deck shower	yes
Anchor	yes



VRIPACK TRAWLER

Anchor chain	60 M
Windlass	hydraulic Vetus
Deck wash	6000 l/h
Deck crane	hydraulic /mast
Sea railing	stainless steel
Grab rail (superstructure)	stainless steel
Wiper	3x
Horn	air pressure
Fenders	yes
Mooring lines	yes
Alarm system	yes
TV	JVC Flatscreen
TV receiver	Thomson
Satellite	Camos system
Surround Sound System	JVC DVD cinema system
Clock - barometer	Plastimo clock/baro and hygrometer
Fire extinguisher	yes
Extinguisher in engine room	yes
Extra info	Safe



VRIPACK TRAWLER



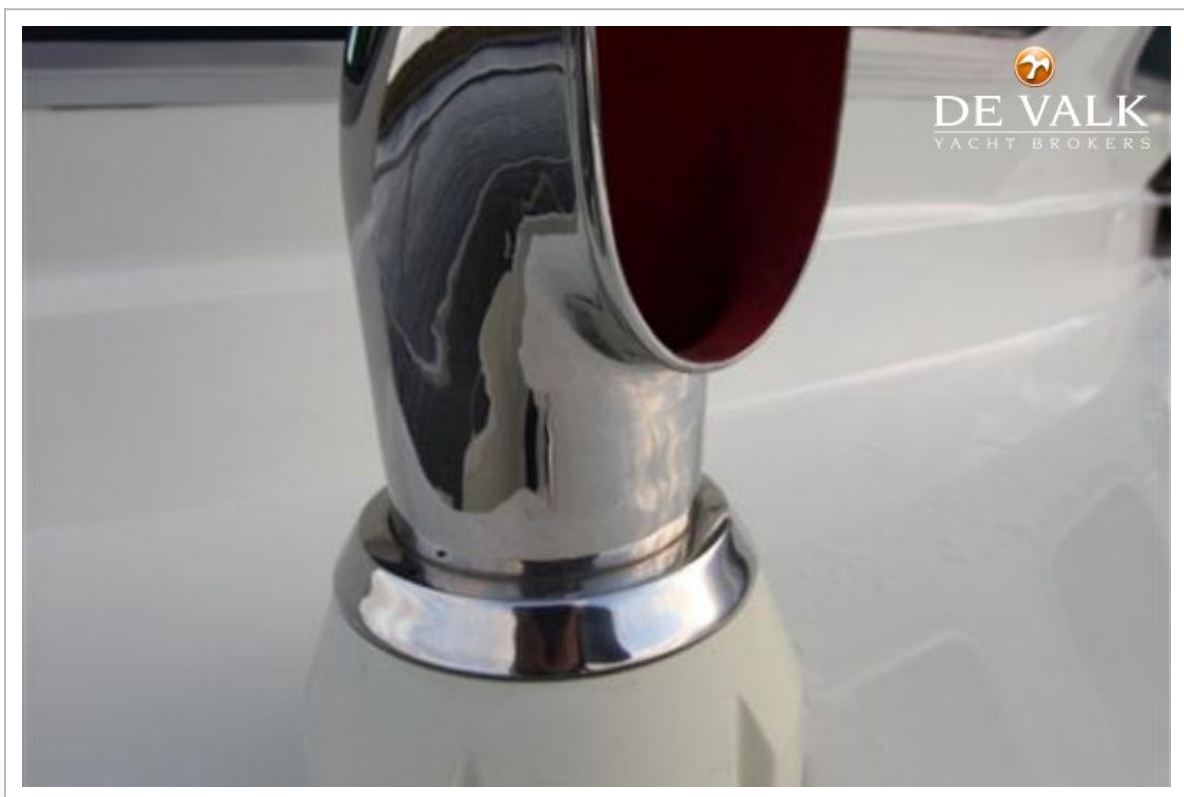
VRIPACK TRAWLER



VRIPACK TRAWLER



VRIPACK TRAWLER



VRIPACK TRAWLER



VRIPACK TRAWLER



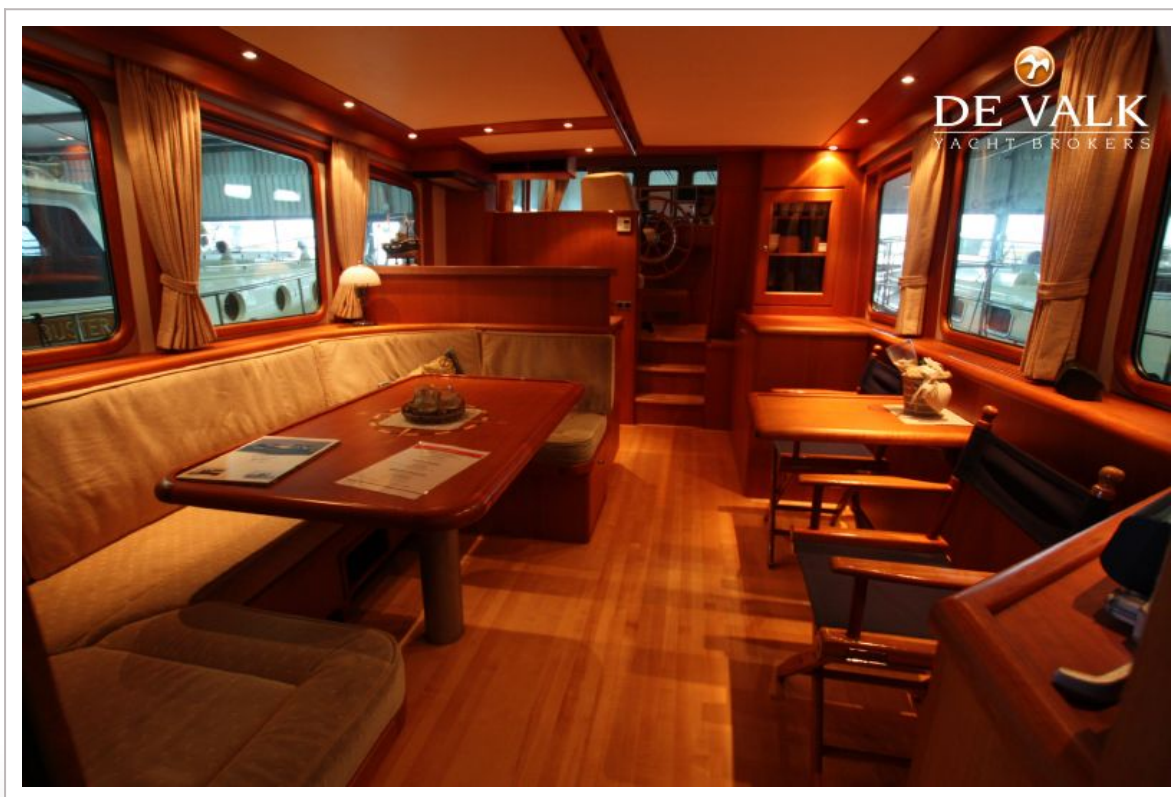
VRIPACK TRAWLER



VRIPACK TRAWLER



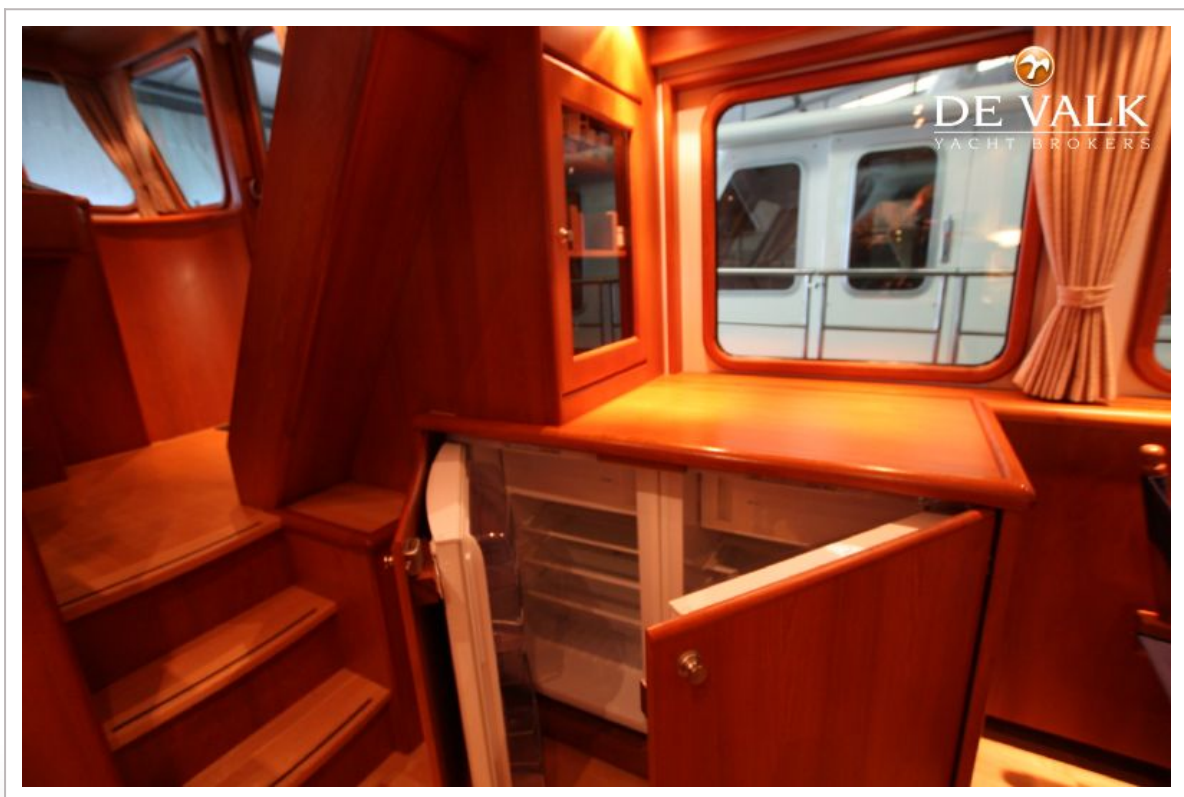
VRIPACK TRAWLER



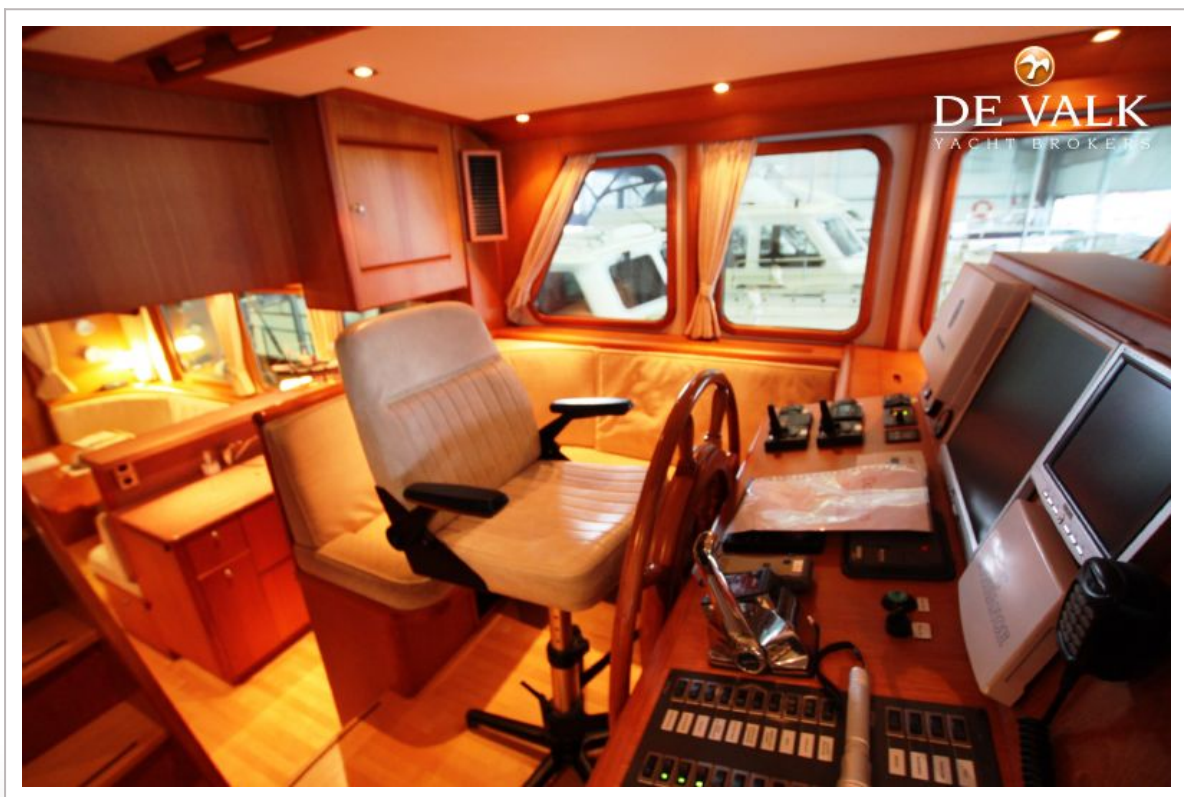
VRIPACK TRAWLER



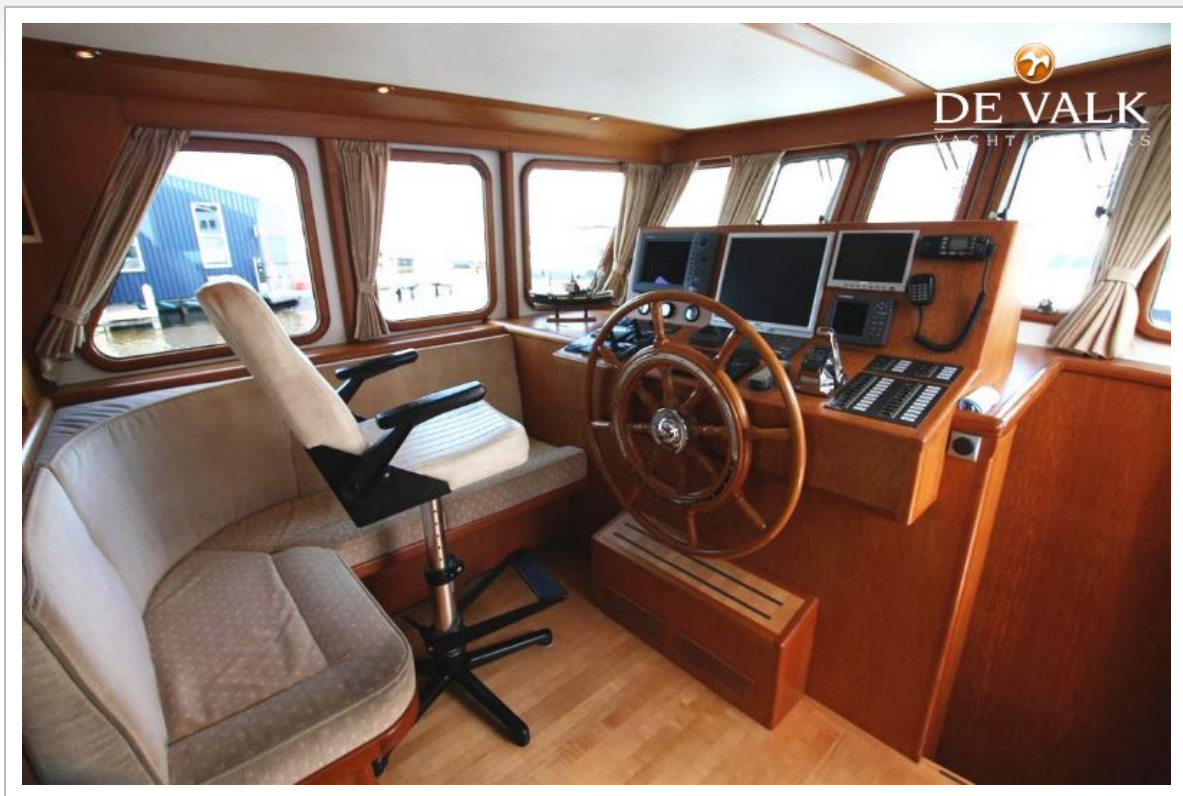
VRIPACK TRAWLER



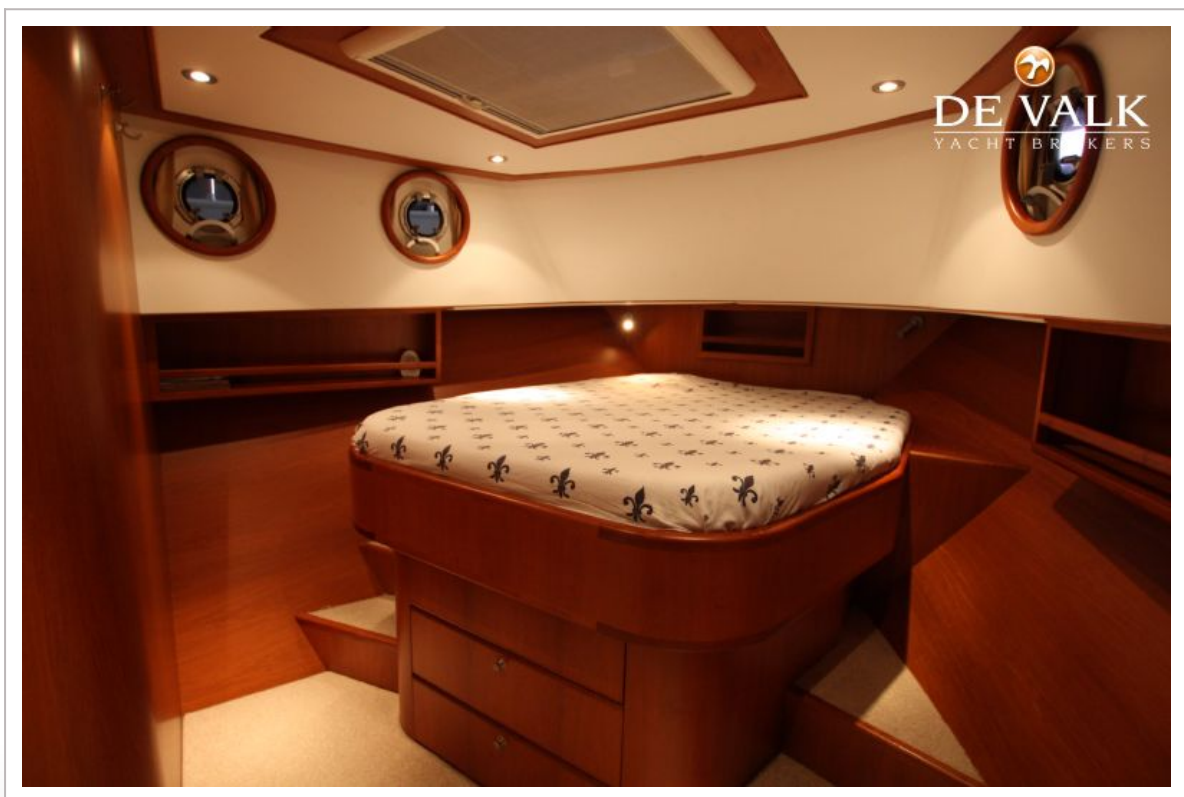
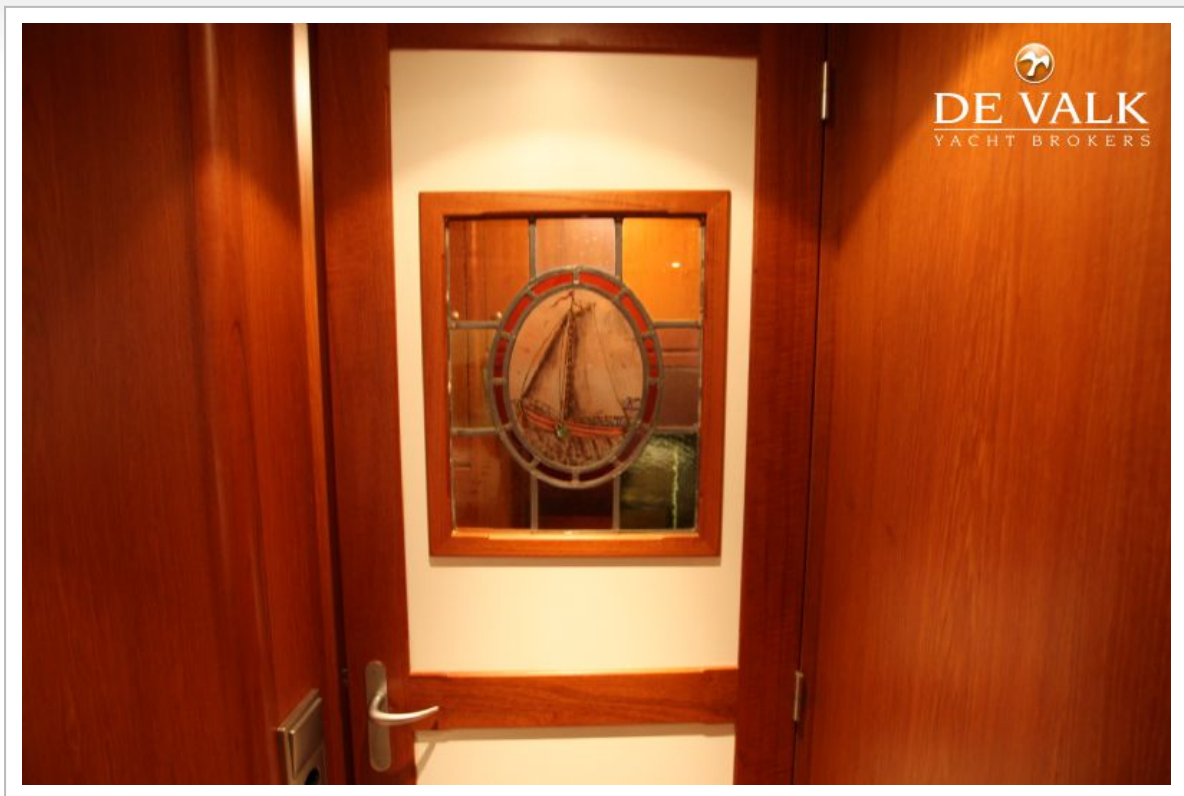
VRIPACK TRAWLER



VRIPACK TRAWLER



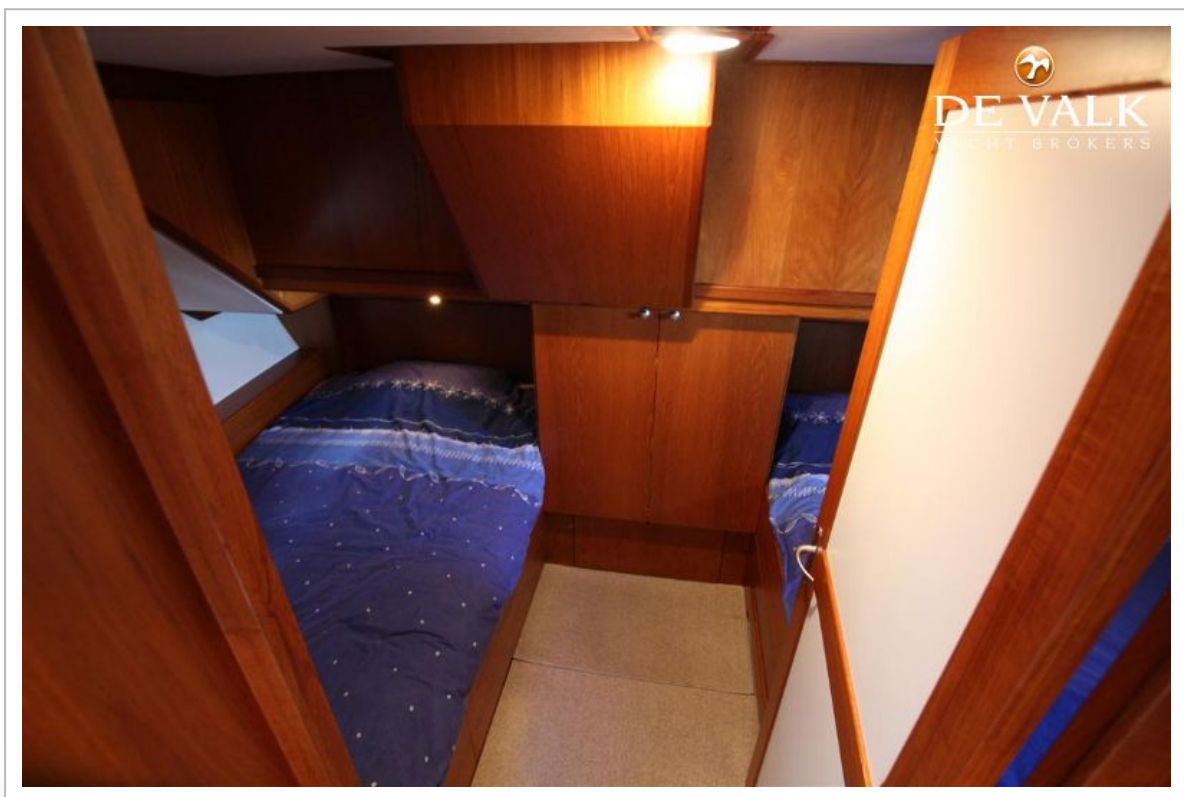
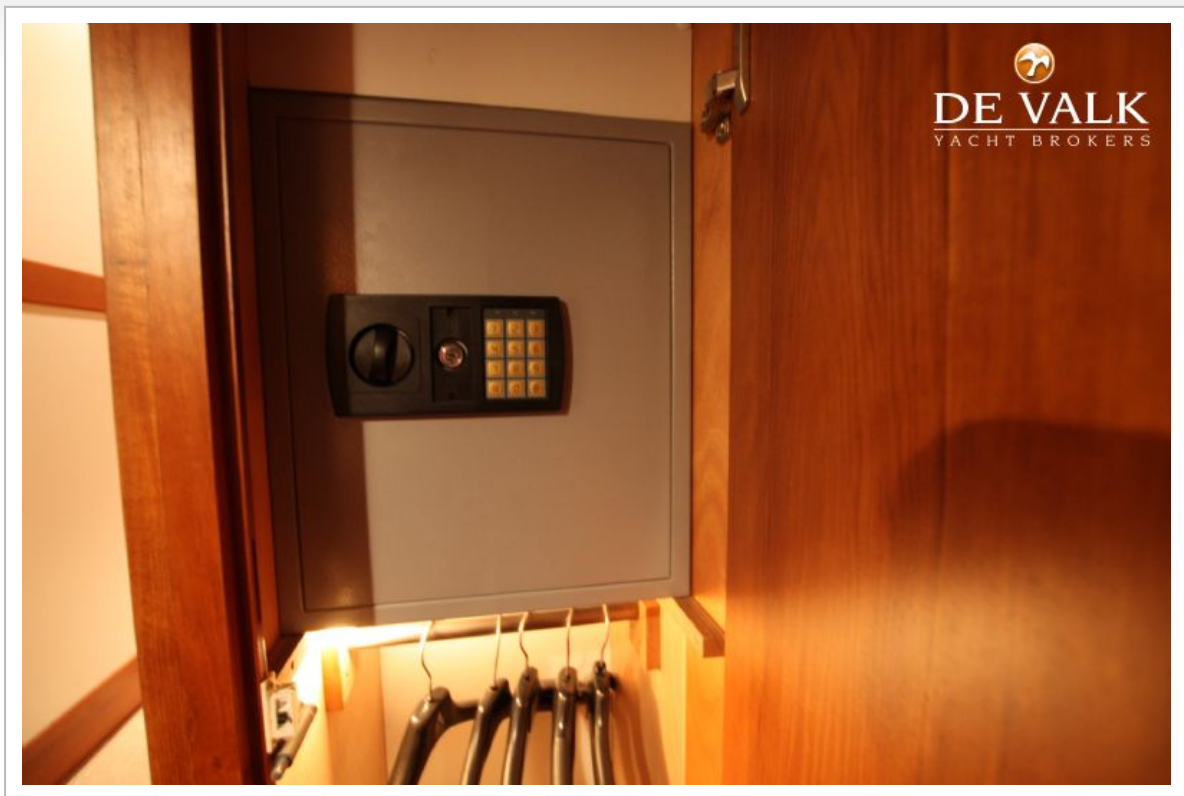
VRIPACK TRAWLER



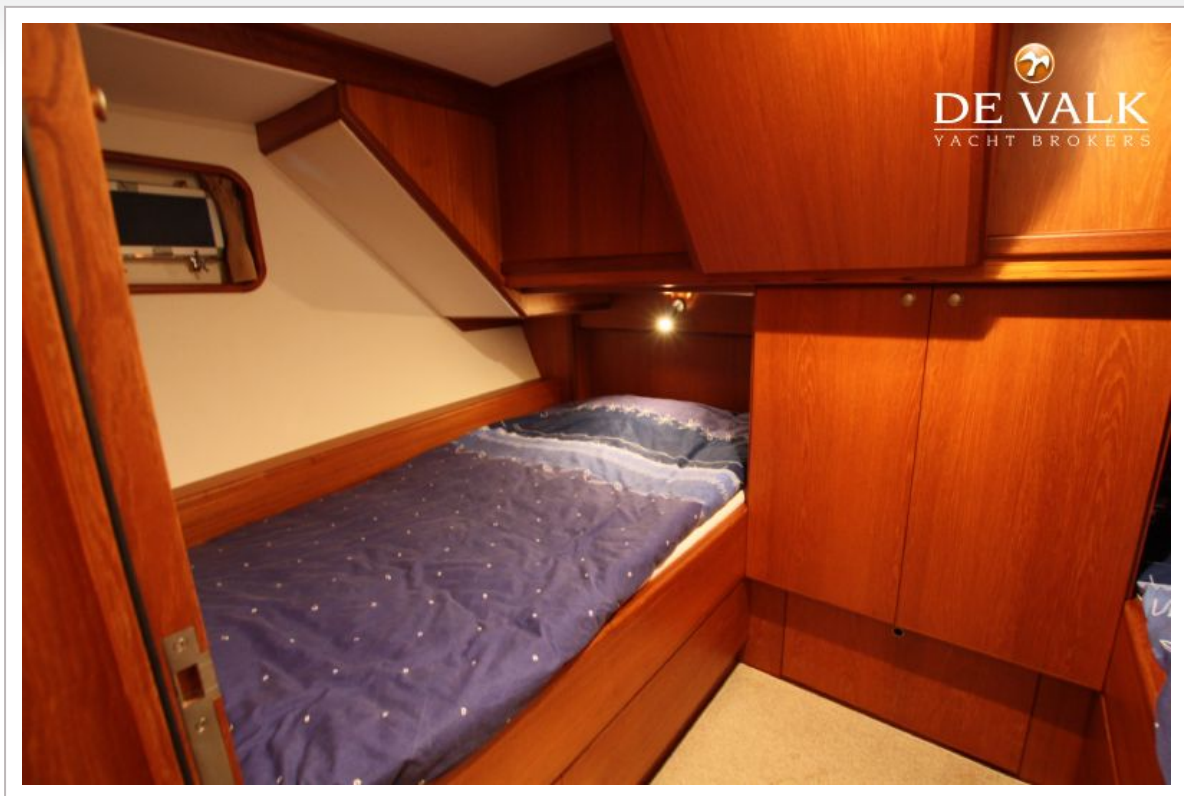
VRIPACK TRAWLER



VRIPACK TRAWLER



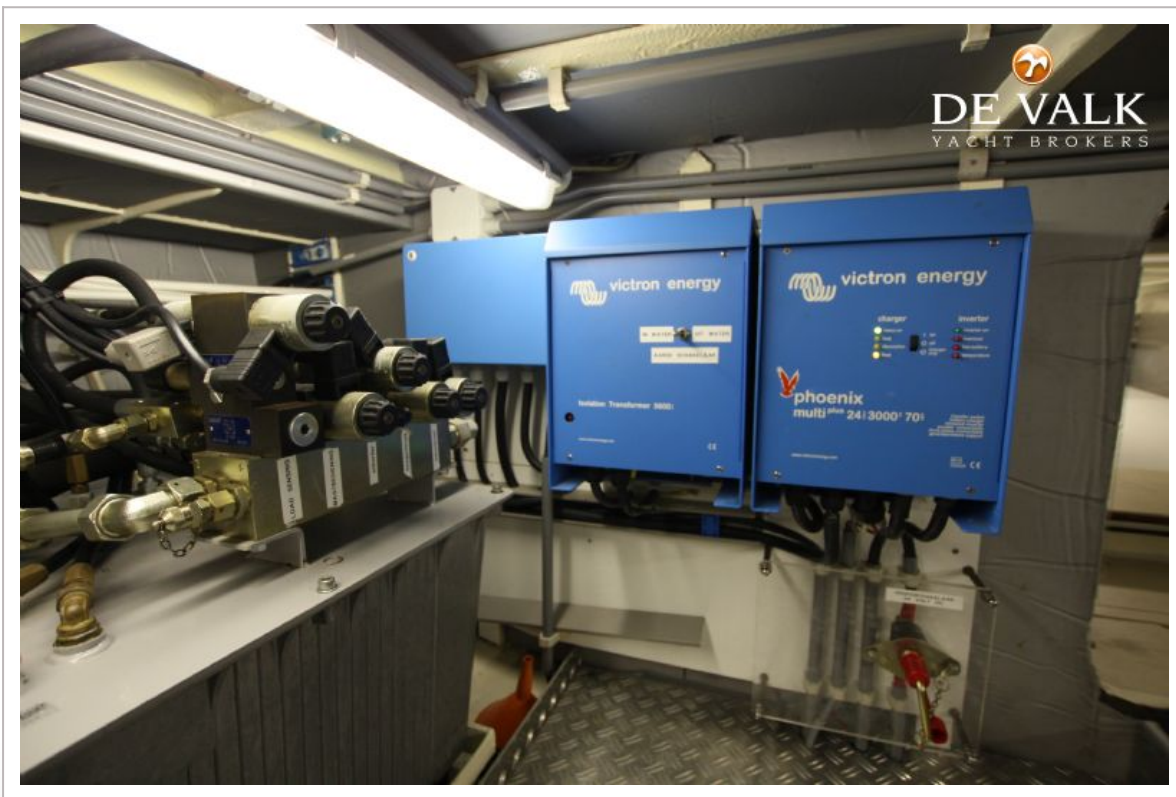
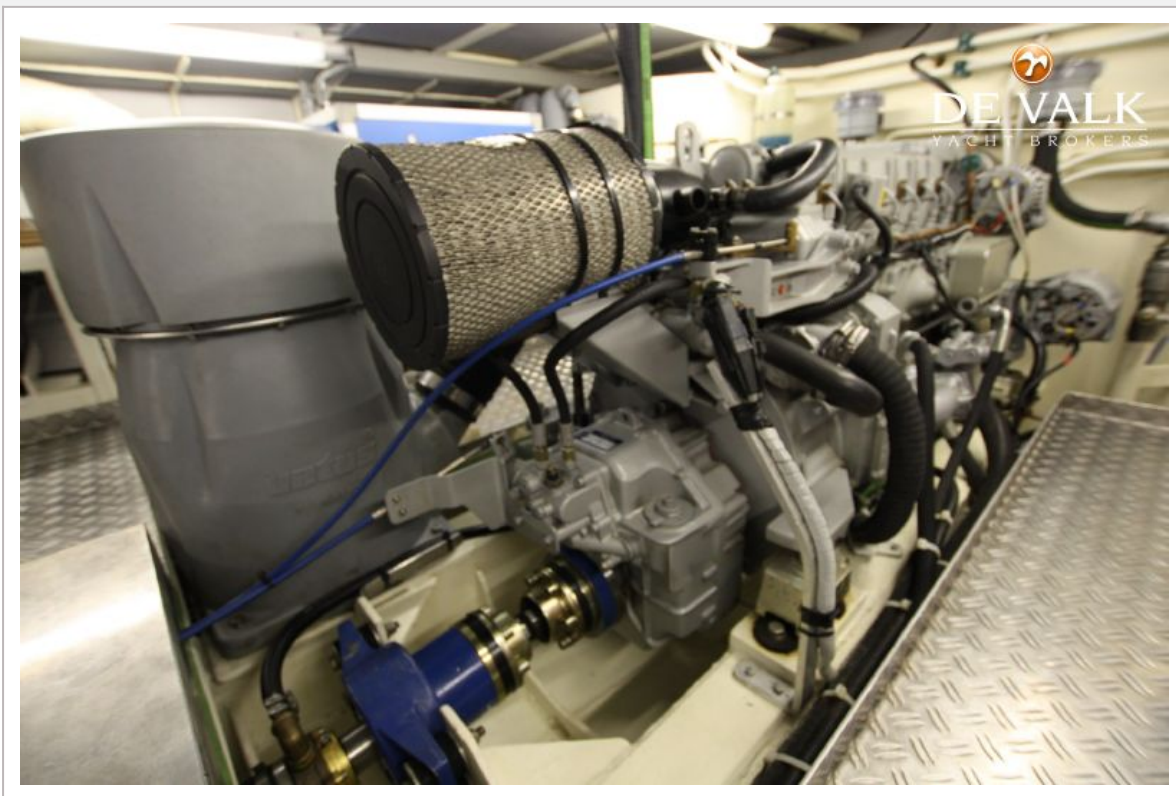
VRIPACK TRAWLER



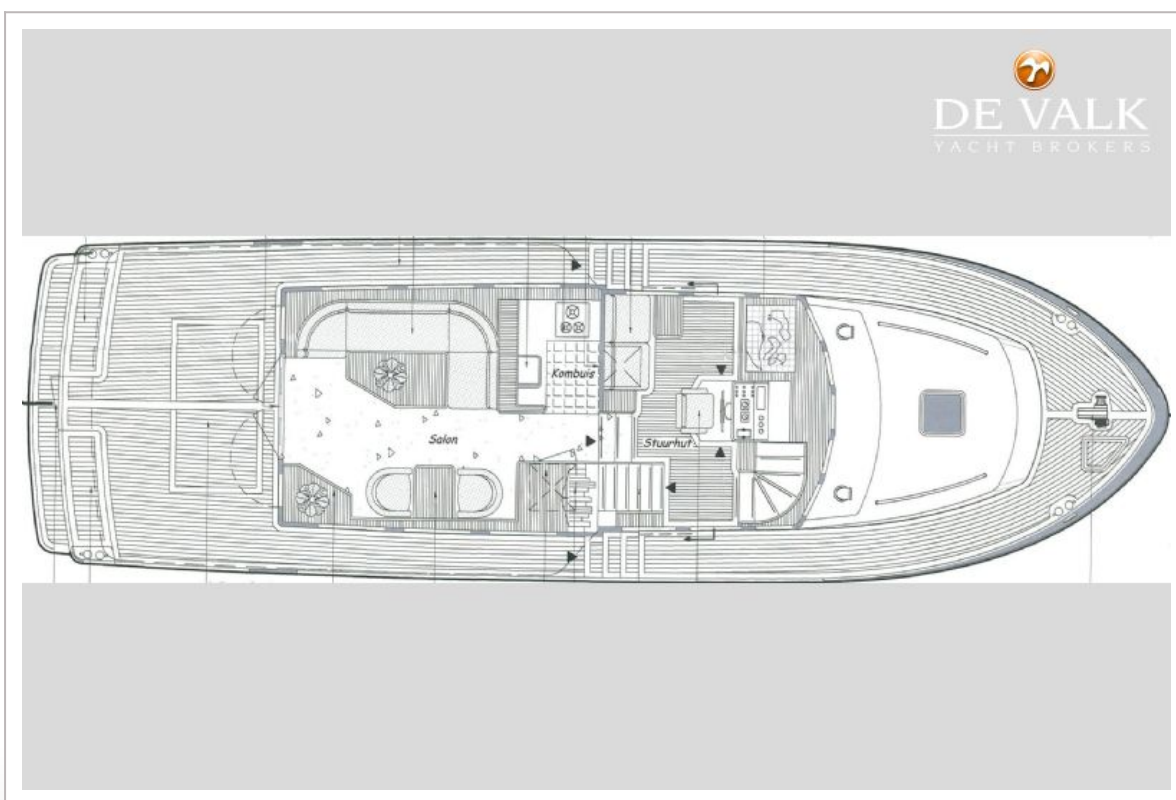
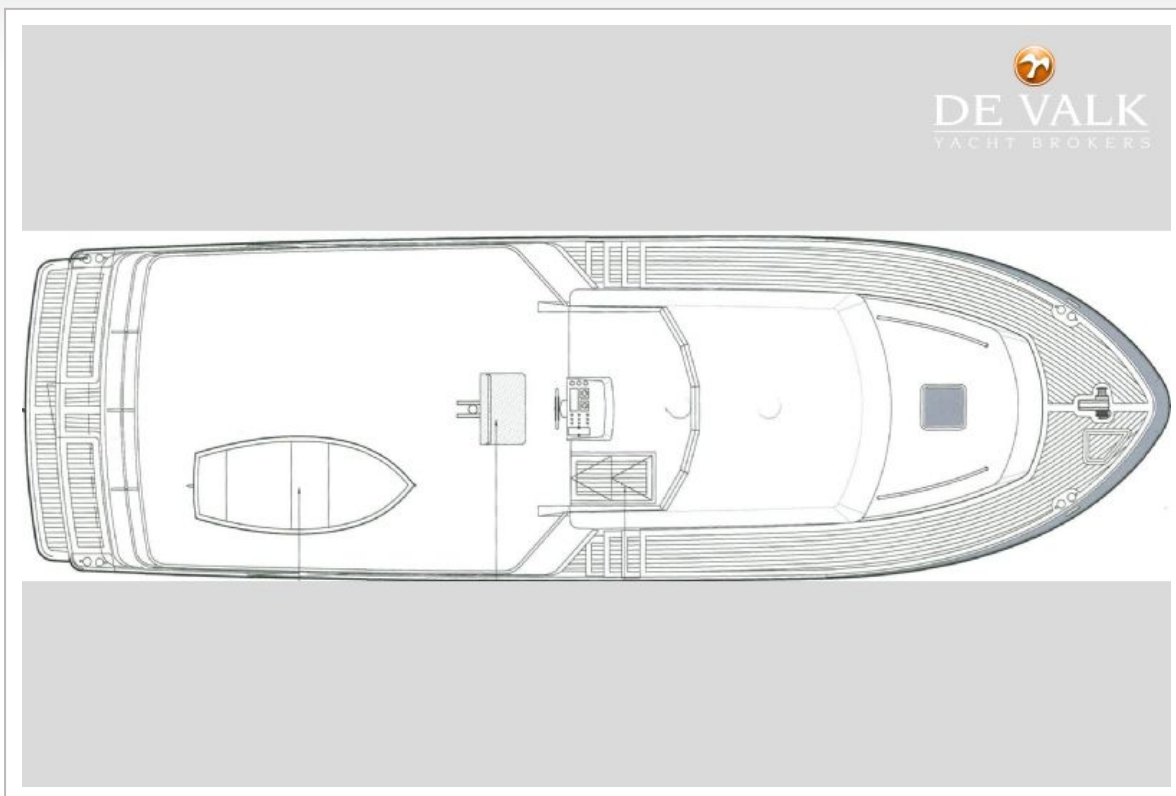
VRIPACK TRAWLER



VRIPACK TRAWLER



VRIPACK TRAWLER



VRIPACK TRAWLER

