



DE VALK  
YACHT BROKERS



## FLEMING 55



DE VALK  
YACHT BROKERS

## BROKER'S COMMENTS

Fleming 55 pilothouse motoryacht "Grand Lady", built by Fleming yachts in 2001 and customized (to the highest Swedish boat building craftsmanship) by her current owner in 2007. The current owner is a former yacht designer and part manufacturer who want to create the optimal motor yacht for his private use in Scandinavia. This Fleming 55 with extended saloon, closed galley and three cabin layout offers a lot of living space, perfect for a longer stay on board! Very well maintained and viewing is highly recommended!

*Arne Doodeman*

## SPECIFICATIONS

|                     |                             |                |                              |
|---------------------|-----------------------------|----------------|------------------------------|
| <b>Dimensions</b>   | 16.99 x 4.88 x 1.53 (m)     | <b>Builder</b> | Fleming Yachts               |
| <b>Built</b>        | 2001                        | <b>Cabins</b>  | 3                            |
| <b>Material</b>     | GRP                         | <b>Berths</b>  | 6                            |
| <b>Engine(s)</b>    | 2 x Caterpillar 3208 diesel | <b>Hp/Kw</b>   | 2 x 435.00 (hp), 319.73 (kw) |
| <b>Asking price</b> | sold (VAT )                 | <b>Lying</b>   | at sales office              |

## CONTACT

|                     |                                      |                  |                     |
|---------------------|--------------------------------------|------------------|---------------------|
| <b>Sales office</b> | De Valk Sneek                        | <b>Telephone</b> | +31 (0)515 42 80 30 |
| <b>Address</b>      | Zwolsmanweg 7<br>8606 KC Sneek<br>NL | <b>E-mail</b>    | sneek@devalk.nl     |

## DISCLAIMER

These particulars are given in good faith as supplied but cannot be guaranteed.



## GENERAL

|                         |                 |
|-------------------------|-----------------|
| Model                   | FLEMING 55      |
| Type                    | motor yacht     |
| LOA (m)                 | 16,99           |
| LWL (m)                 | 15,27           |
| Beam (m)                | 4,88            |
| Draft (m)               | 1,53            |
| Air draft (m)           | 4,57            |
| Year built              | 2001            |
| Builder                 | Fleming Yachts  |
| Country                 | Taiwan          |
| Designer                | Larry Drake     |
| Displacement (t)        | 32              |
| CE norm                 | C               |
| Hull material           | GRP             |
| Hull colour             | white AWL grip  |
| Hull shape              | deep-V          |
| Keel type               | long keel       |
| Superstructure material | GRP             |
| Rubbing strake          | stainless steel |
| Deck material           | GRP             |
| Deck finish             | teak            |
| Cockpit deck finish     | teak            |
| Window frame            | aluminium       |
| Window material         | tempered glass  |
| Portholes               | copper chromed  |
| Flybridge               | yes             |
| Flybridge cover         | yes             |
| Flybridge suncover      | yes             |
| Radar arch              | collapsible     |
| Fuel tank (litre)       | 3880            |



|                              |   |
|------------------------------|---|
| Level indicator (fuel tank)  | yes   |
| Freshwater tank (litre)      | 1132  |
| Level indicator (freshwater) | yes   |
| Blackwater tank (litre)      | 380   |
| Level indicator (blackwater) | yes   |
| Wheel steering               | hydraulic                                   |
| Inside helm position         | yes   |
| Flybridge helm position      | 2x  |
| More info on paintwork       | hull and superstructure painted in AWL grip |

## ACCOMMODATION

|                         |   |
|-------------------------|---|
| Cabins                  | 3                                       |
| Berths                  | 6                                       |
| Floor                   | carpet                                  |
| Open cockpit            | yes                                     |
| Pilot house             | yes                                     |
| Saloon                  | yes                                     |
| Heating                 | diesel ducted hot air 2x Webasto (2007) |
| Air-conditioning        | (2007)                                  |
| Chart table             | yes                                     |
| Dining room             | yes                                     |
| Dinette                 | yes                                     |
| Sliding door to cockpit | yes                                     |
| Galley                  | yes                                     |
| Countertop              | stainless steel                         |
| Sink                    | stainless steel Double                  |
| Cooker                  | electric 3-burner Cylinda (2007)        |
| Oven                    | Cylinda (2007)                          |
| Extractor               | yes                                     |
| Microwave               | yes                                     |
| Fridge                  | with freezer compartment 2x (2007)      |



|                       |  |
|-----------------------|--|
| Hot water system      | 220V + engine Quick 80 l. nautic boiler (2007) |
| Water pressure system | yes  |
| Dishwasher            | Cylinda (2007)                                 |
| Crockery              | yes  |
| Owners cabin          | French bed                                     |
| Wardrobe              | yes  |
| Bathroom              | en suite                                       |
| Toilet                |  |
| Toilet system         | electric                                       |
| Wash basin            |  |
| Shower                | yes  |
| Guest cabin 1         | twin single                                    |
| Wardrobe              | yes  |
| Bathroom              | shared   |
| Toilet                |  |
| Toilet system         | electric                                       |
| Wash basin            |  |
| Shower                | yes  |
| Guest cabin 2         | bunk bed                                       |
| Wardrobe              | yes  |
| Washing machine       | Electrolux (2007)                              |

## MACHINERY

|                    |             |
|--------------------|-------------|
| No of engines      | 2           |
| Make               | Caterpillar |
| Type               | 3208        |
| HP                 | 435         |
| kW                 | 319.73      |
| Fuel               | diesel      |
| Year installed     | 2005        |
| Maximum speed (kn) | 14          |



|                                 |  |
|---------------------------------|--|
| <b>Cruising speed (kn)</b>      | 8  |
| <b>Engine hours</b>             | 520,2  |
| <b>Engine cooling system</b>    | freshwater heat exchanger                        |
| <b>Drive</b>                    | shaft  |
| <b>Engine controls</b>          | manual   |
| <b>Gearbox</b>                  | hydraulic Twindisk                               |
| <b>Bowthruster</b>              | electric Side power with remote control (2007)   |
| <b>Sternthruster</b>            | electric Side power with remote control (2007)   |
| <b>Thrust bearing</b>           | yes  |
| <b>Propeller type</b>           | fixed  |
| <b>Propeller blades</b>         | 4-bladed   |
| <b>Propeller shaft material</b> | stainless steel                                  |
| <b>Shaft lubrication</b>        | water  |
| <b>Electric bilge pump</b>      | yes  |
| <b>Generator</b>                | Fisher Panda 6,8 kva (2007)                      |
| <b>Start battery</b>            | 2x 220 ah  |
| <b>Service battery</b>          | 4x 200 ah Victron gel battery                    |
| <b>Generator battery</b>        | 1x   |
| <b>Battery monitor</b>          | yes  |
| <b>Battery charger/inverter</b> | Master volt Phoenix multi plus 24/3000/70 (2007) |
| <b>Shorepower</b>               | with cable Front- & aft connection               |
| <b>Insulation transformer</b>   | Victron insulation transformer 5000 (2009)       |
| <b>Stabilizers</b>              | fin Not in working condition                     |
| <b>Trimtabs</b>                 | yes  |

## NAVIGATION

|                         |                              |
|-------------------------|------------------------------|
| <b>Electric compass</b> | Azimuth                      |
| <b>Depth sounder</b>    | B&G network Depth            |
| <b>Log</b>              | B&G network Depth            |
| <b>Windset</b>          | B&G network Depth            |
| <b>Repeater</b>         | B&G repeater on the flybrige |



|                          |   |
|--------------------------|---|
| <b>Fish finder</b>       | Furuno FCV-582L echosounder/fishfinder                          |
| <b>VHF</b>               | I-com VHF and I-com IC-M502                                     |
| <b>Autopilot</b>         | Robertson AP22  |
| <b>Radar</b>             | Furuno  |
| <b>GPS</b>               | Furuno GPS navigator  |
| <b>Plotter</b>           | Lowrance chartplotter and chartplotter on the personal computer |
| <b>Weather receiver</b>  | digital   |
| <b>Personal computer</b> | Dell computer with HP printer                                   |
| <b>Camera</b>            | yes   |
| <b>Searchlight</b>       | 2x  |
| <b>Loudhailer</b>        | yes   |

## EQUIPMENT

|                                   |   |
|-----------------------------------|---|
| <b>Bimini</b>                     | yes   |
| <b>Cockpit cushions</b>           | on flybridge  |
| <b>Cockpit table</b>              | 3x teak table   |
| <b>Cockpit chairs</b>             | 6x teak chair   |
| <b>Bathing platform</b>           | Large extended bathing platform, makes LOA around 19 mtr. |
| <b>Boarding ladder</b>            | stainless steel   |
| <b>Transom door</b>               | yes   |
| <b>Anchor</b>                     | Bruce Stainless steel                                     |
| <b>Anchor chain</b>               | yes   |
| <b>Windlass</b>                   | electrical Lofrance tigris (2007)                         |
| <b>Deck wash</b>                  | yes   |
| <b>Dinghy</b>                     | rigid inflatable  |
| <b>Outboard</b>                   | Mercury 30 hp   |
| <b>Deck crane</b>                 | electric  |
| <b>Sea railing</b>                | stainless steel   |
| <b>Grab rail (superstructure)</b> | stainless steel   |
| <b>Lifebuoy</b>                   | yes   |



|                             |                          |
|-----------------------------|--------------------------|
| Wiper                       | 3x                       |
| Horn                        | air pressure Double horn |
| Fenders                     | yes                      |
| Mooring lines               | yes                      |
| TV                          | Samsung                  |
| TV receiver                 | yes                      |
| TracVision ball             | 2x dummy                 |
| Radio-cd player             | Kenwood                  |
| DVD player                  | Kenwood                  |
| Fire extinguisher           | yes                      |
| Extinguisher in engine room | yes                      |





# FLEMING 55



# FLEMING 55



# FLEMING 55





## FLEMING 55



# FLEMING 55

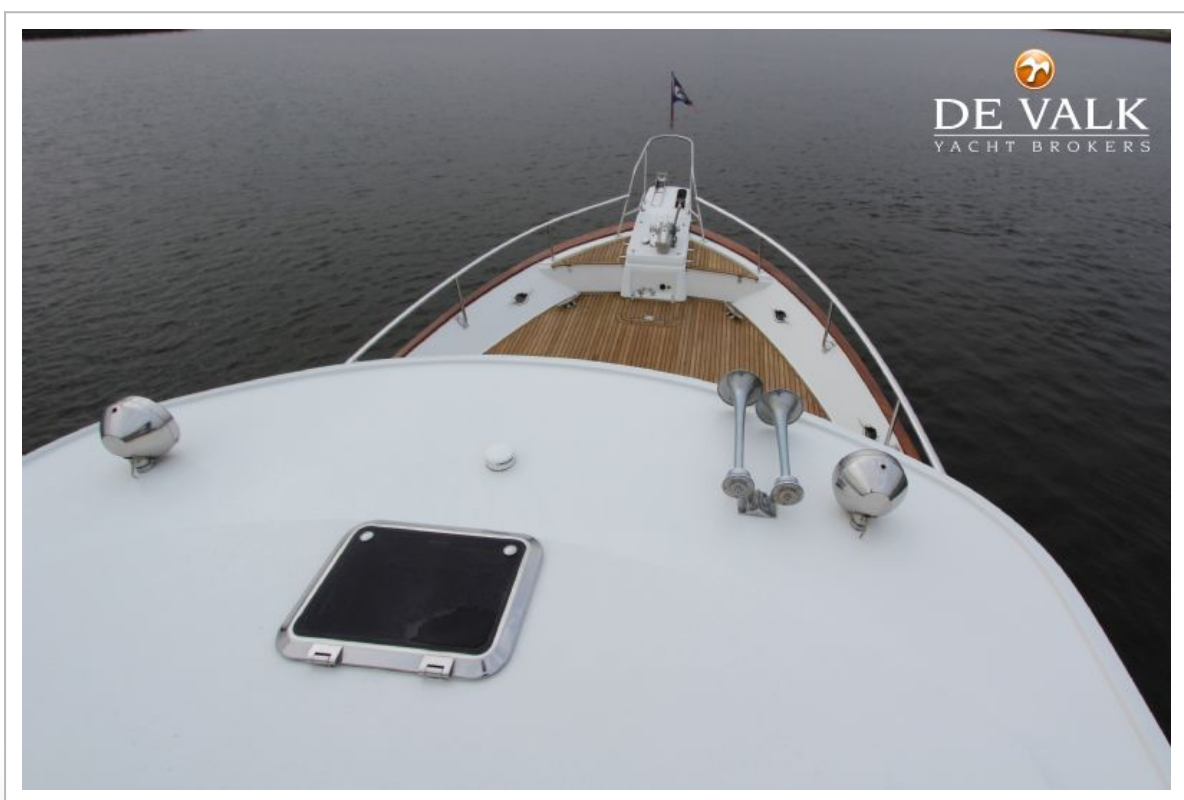


## FLEMING 55





# FLEMING 55



# FLEMING 55

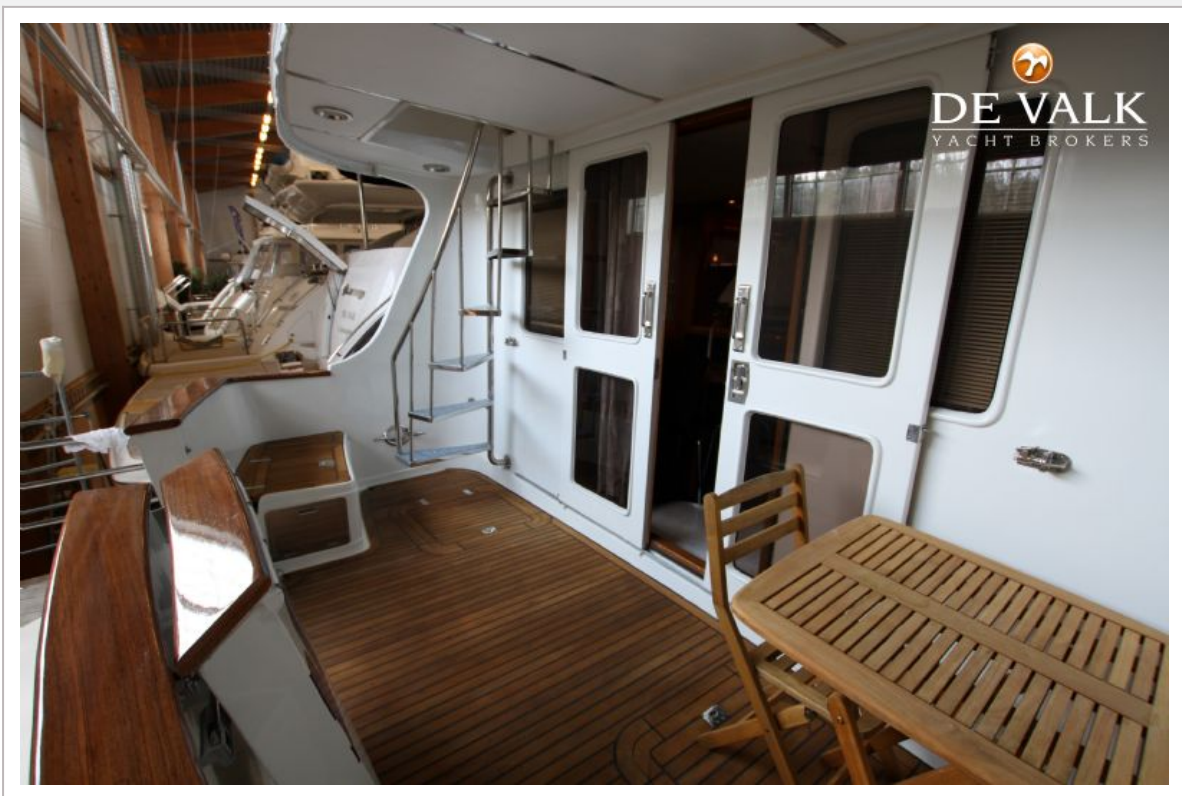




# FLEMING 55



# FLEMING 55





## FLEMING 55



# FLEMING 55





## FLEMING 55

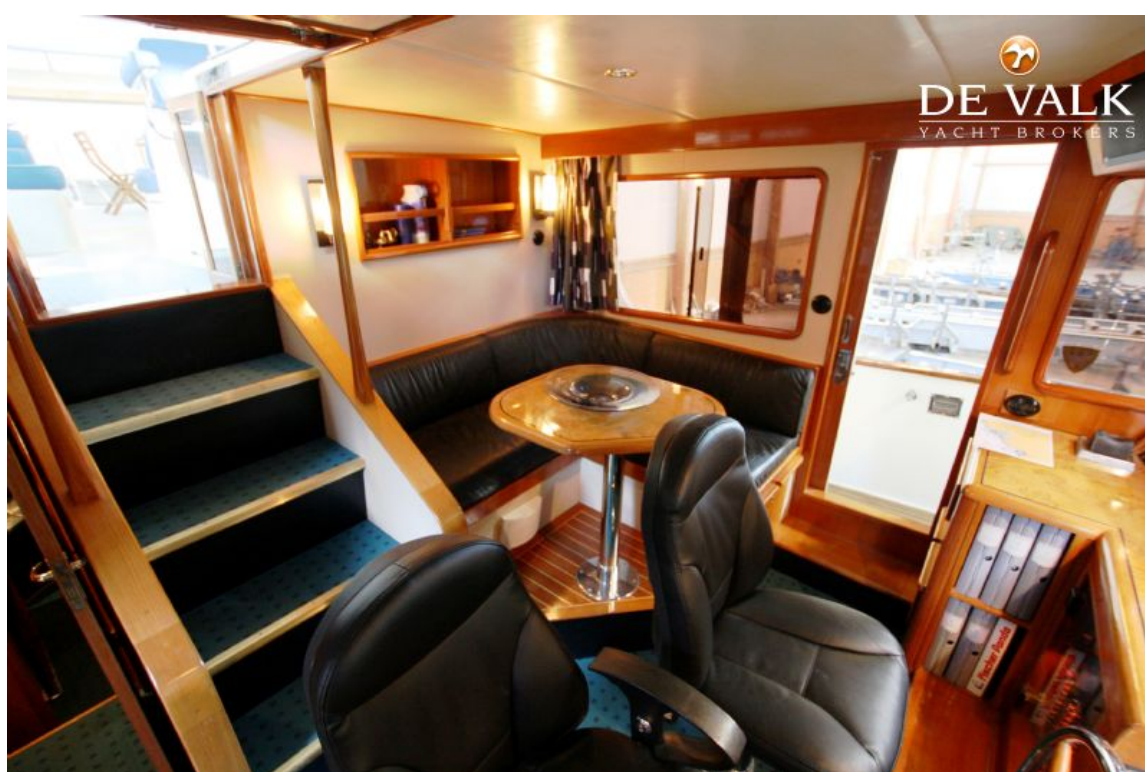


## FLEMING 55





# FLEMING 55



## FLEMING 55





## FLEMING 55



## FLEMING 55





## FLEMING 55



# FLEMING 55

