



DE VALK  
YACHT BROKERS



GIORGI 46 OPEN



DE VALK  
YACHT BROKERS

# GIORGI 46 OPEN

## BROKER'S COMMENTS

*Pieter Bosma*

## SPECIFICATIONS

<b>Dimensions</b>	14.60 x 4.20 x 0.90 (m)	<b>Builder</b>	Giorgi Marine, hull built by Pershing
<b>Built</b>	1991	<b>Cabins</b>	3
<b>Material</b>	GRP	<b>Berths</b>	6
<b>Engine(s)</b>	2 x Caterpillar 3208TA diesel	<b>Hp/Kw</b>	2 x 425.00 (hp), 312.38 (kw)
<b>Asking price</b>	sold (VAT )	<b>Lying</b>	at sales office

## CONTACT

<b>Sales office</b>	De Valk Sneek	<b>Telephone</b>	+31 (0)515 42 80 30
<b>Address</b>	Zwolsmanweg 7 8606 KC Sneek NL	<b>E-mail</b>	sneek@devalk.nl

## DISCLAIMER

These particulars are given in good faith as supplied but cannot be guaranteed.



# GIORGI 46 OPEN

## GENERAL

<b>Model</b>	GIORGI 46 OPEN
<b>Type</b>	motor yacht
<b>LOA (m)</b>	14,60
<b>Beam (m)</b>	4,20
<b>Draft (m)</b>	0,90
<b>Year built</b>	1991
<b>Builder</b>	Giorgi Marine, hull built by Pershing
<b>Country</b>	Italy
<b>Displacement (t)</b>	12
<b>CE norm</b>	
<b>Hull material</b>	GRP

## ACCOMMODATION

<b>Cabins</b>	3
<b>Berths</b>	6

## MACHINERY

<b>No of engines</b>	2
<b>Make</b>	Caterpillar
<b>Type</b>	3208TA
<b>HP</b>	425,00
<b>kW</b>	312,38
<b>Fuel</b>	diesel
<b>Maximum speed (kn)</b>	33
<b>Cruising speed (kn)</b>	25
<b>Engine hours</b>	2100
<b>Drive</b>	shaft



# GIORGI 46 OPEN



# GIORGI 46 OPEN



# GIORGI 46 OPEN



# GIORGI 46 OPEN



# GIORGI 46 OPEN





# GIORGI 46 OPEN



# GIORGI 46 OPEN



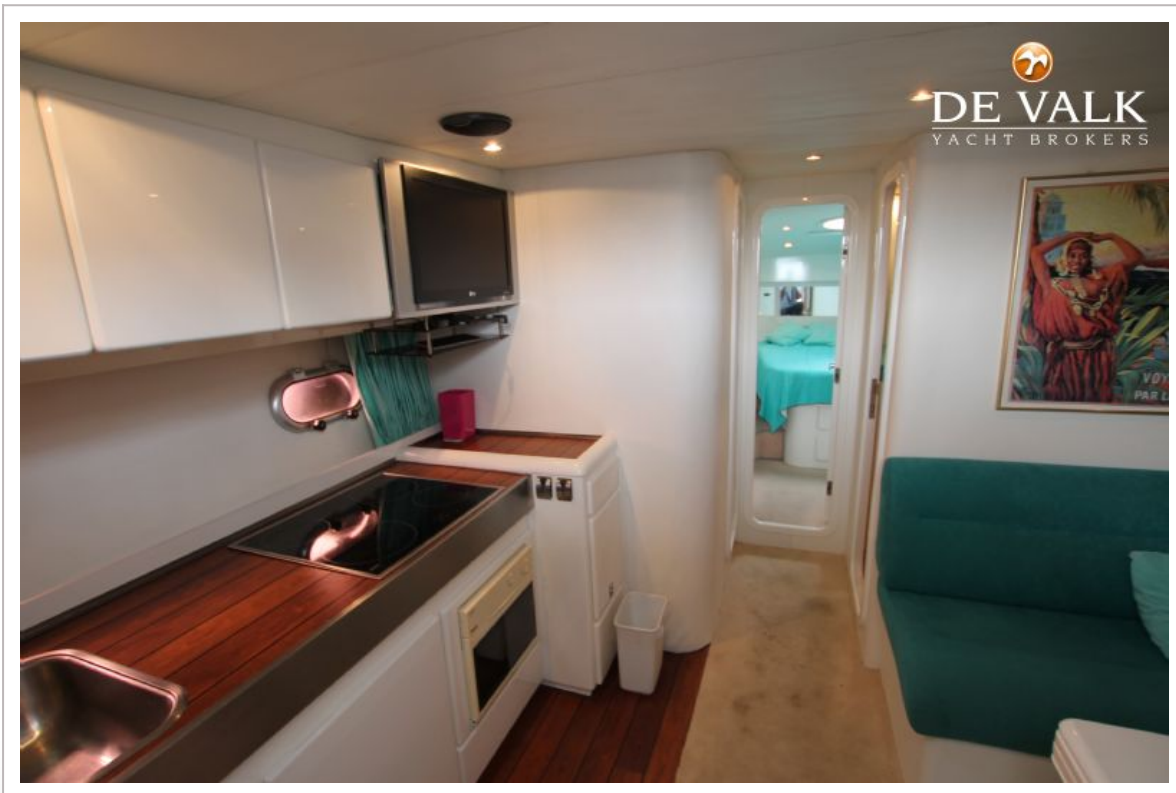
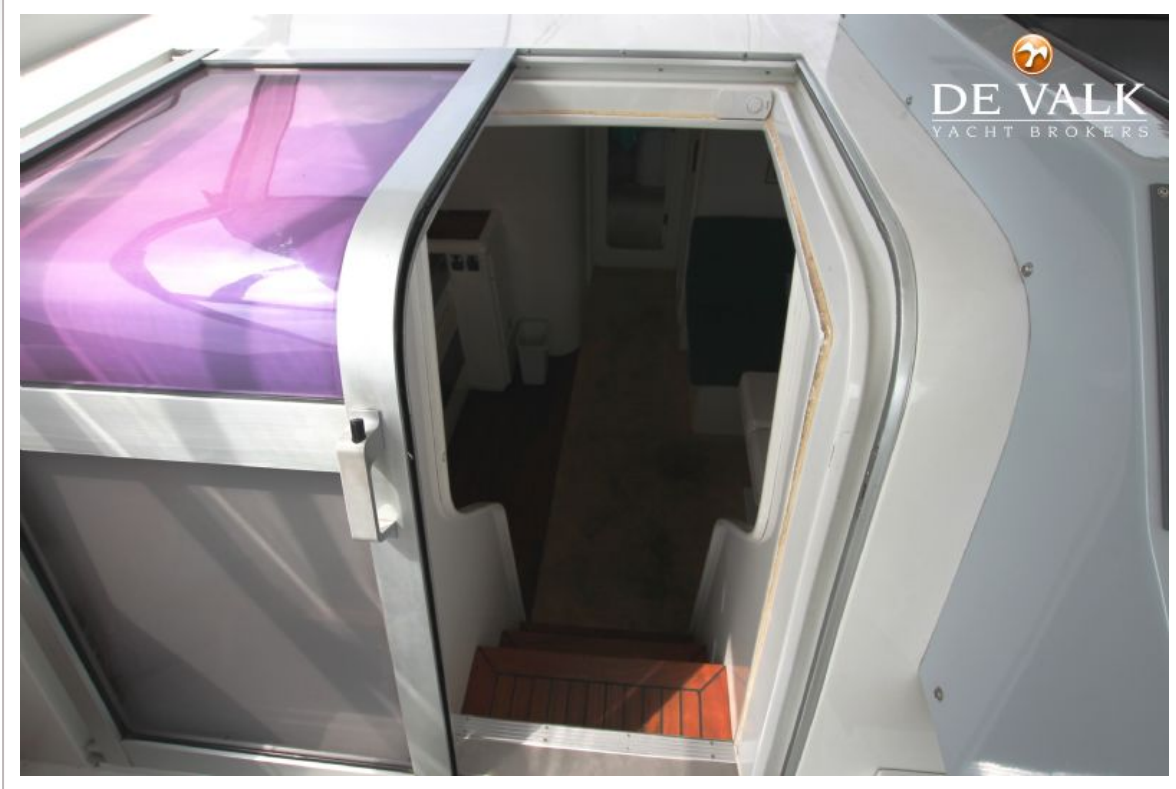
# GIORGI 46 OPEN



# GIORGI 46 OPEN



# GIORGI 46 OPEN



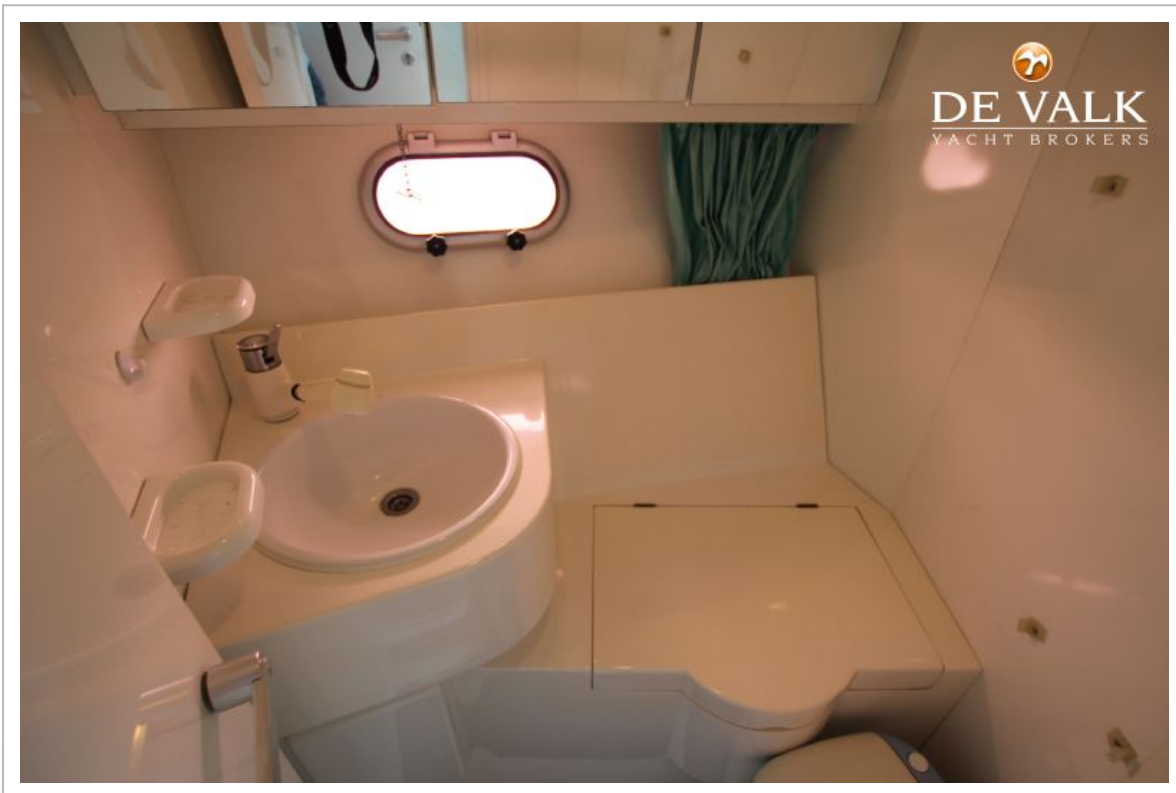
# GIORGI 46 OPEN



# GIORGI 46 OPEN



# GIORGI 46 OPEN





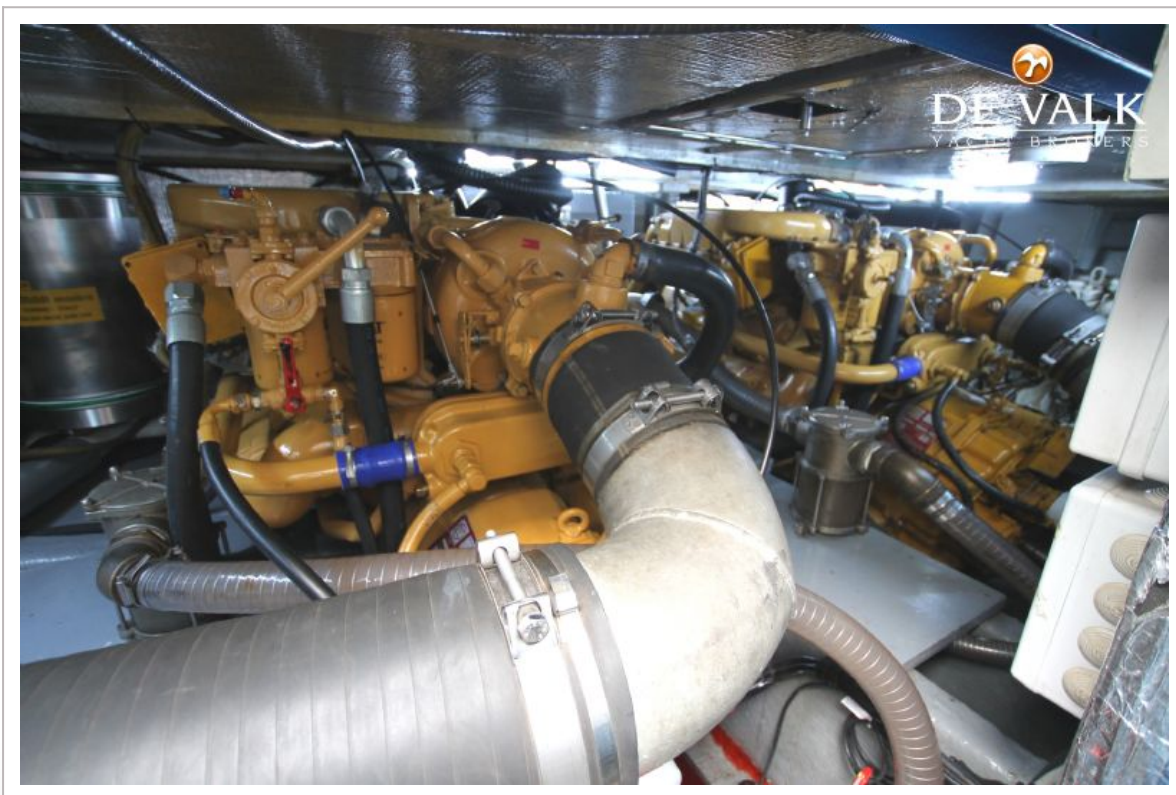
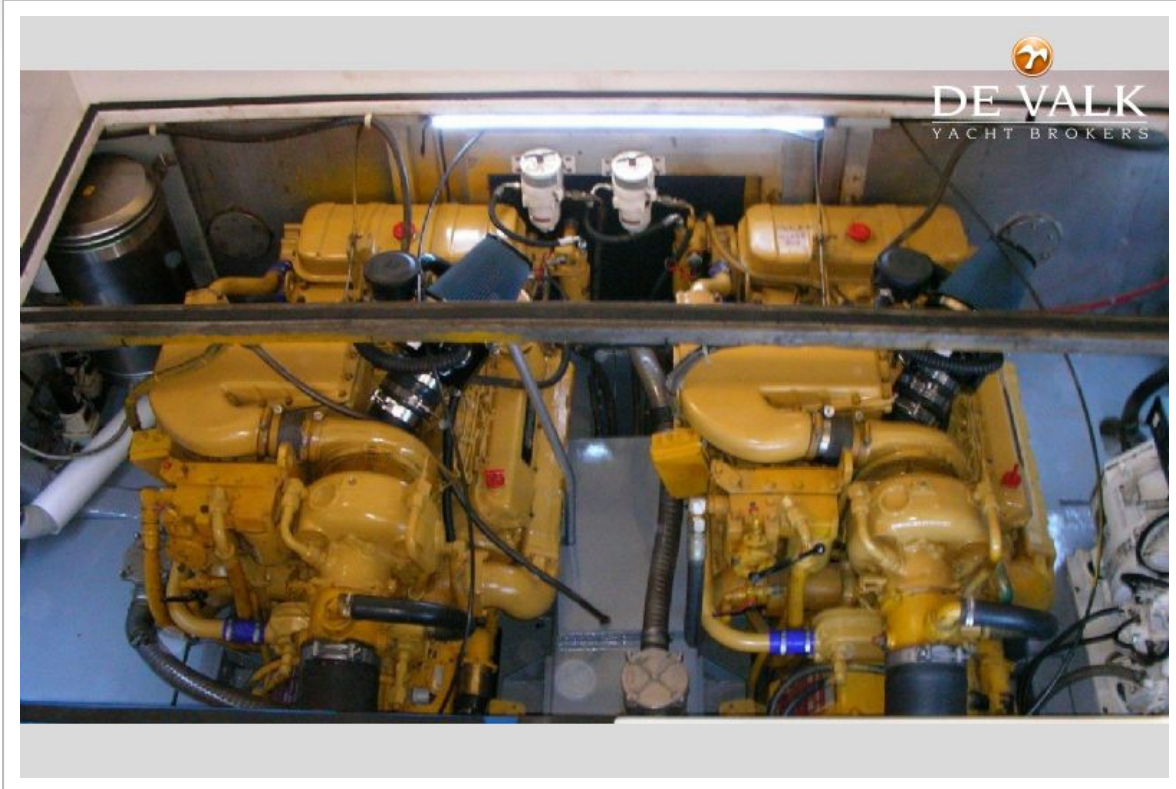
# GIORGI 46 OPEN



# GIORGI 46 OPEN



# GIORGI 46 OPEN



# GIORGI 46 OPEN

