



AQUANAUT 1350

AQUANAUT 1350

BROKER'S COMMENTS

The Aquanaut Drifter 13.50 can sail problem free throughout Europe. This boat is equipped with a Perkins-Sabre diesel engine and a electric bow thruster. New carpet fitted throughout the whole boat (2013). She is well maintained and ready to go.

Arne Doodeman

SPECIFICATIONS

Dimensions	13.50 x 4.30 x 1.00 (m)	Builder	Aquanaut Yachting
Built	2005	Cabins	2
Material	Steel	Berths	6
Engine(s)	1 x Perkins Sabre M135 diesel	Hp/Kw	135.00 (hp), 99.22 (kw)
Asking price	sold (VAT)	Lying	at sales office

CONTACT

Sales office	De Valk Sneek	Telephone	+31 (0)515 42 80 30
Address	Zwolsmanweg 7 8606 KC Sneek NL	E-mail	sneek@devalk.nl

DISCLAIMER

These particulars are given in good faith as supplied but cannot be guaranteed.



AQUANAUT 1350

GENERAL

Model	AQUANAUT 1350
Type	motor yacht Motor yacht
LOA (m)	13,50
LWL (m)	11,00
Beam (m)	4,30
Draft (m)	1,00
Air draft (m)	3,10
Year built	2005
Builder	Aquanaut Yachting
Country	The Netherlands
CE norm	B
Hull material	steel
Hull colour	blue
Hull shape	multi hard chine
Superstructure material	steel
Deck material	steel
Deck finish	anti-slip paint Sikkens
Window frame	aluminum
Window material	double glazing Tinted
Insulation	foam Spray
Fuel tank (litre)	700
Level indicator (fuel tank)	yes
Freshwater tank (litre)	1200
Level indicator (freshwater)	yes
Blackwater tank (litre)	300
Level indicator (blackwater)	yes
Wheel steering	hydraulic
Extra info	Black water tank has a charcoal filter before the vent

ACCOMMODATION



AQUANAUT 1350

Cabins	2
Berths	6
Interior	teak
Floor	carpet 2013
Saloon	yes
Heating	diesel ducted hot air Eberspacher 8 kW 5 outlets
Dinette	4 seats
Dinette to convert into berth	yes
Galley	yes
Countertop	With integral waste bin
Sink	stainless steel With drainer
Cooker	calor gas 4 burner
Oven	combination oven/microwave Siemens
Fridge	Shoreline 24V
Hot water system	220V + engine
Water pressure system	yes
Owners cabin	double bed
Wardrobe	2x
Bathroom	
Toilet	yes
Toilet system	electric Fresh water flushed
Wash basin	yes
Shower	yes
Guest cabin 1	v-bed
Wardrobe	yes
Toilet	en suite Marine toilet
Toilet system	manual
Wash basin	yes
Washing machine	yes

MACHINERY



AQUANAUT 1350

No of engines	1
Make	Perkins Sabre
Type	M135
HP	135,00
kW	99,22
Fuel	diesel
Engine hours	1436
Engine controls	manual
Gearbox	ZF gearbox
Bowthruster	electric
Thrust bearing	Aqua-Drive
Propeller type	fixed
Propeller blades	4
Propeller shaft material	stainless steel
Shaft lubrication	water
Electric bilge pump	yes
Battery charger/inverter	Mastervolt combi 24/2000/60
Solar panel	80 Watt, 3.75 amp
Shorepower	with cable 2 cables aboard

NAVIGATION

Depth sounder	Echopilot/forward looking sounder
Rudder angle indicator	yes

EQUIPMENT

Bimini	Full length of sun deck
Bathing platform	yes
Anchor	Stainless steel
Anchor chain	yes
Windlass	manual
Sea railing	stainless steel Guardrails & wind shield



AQUANAUT 1350

Wiper	yes
Fenders	yes
Mooring lines	yes
TV	Sharp
TV receiver	Sky Digibox
DVD player	Philips with surround sound HDD/DVD player-recorder



AQUANAUT 1350



AQUANAUT 1350



AQUANAUT 1350



AQUANAUT 1350



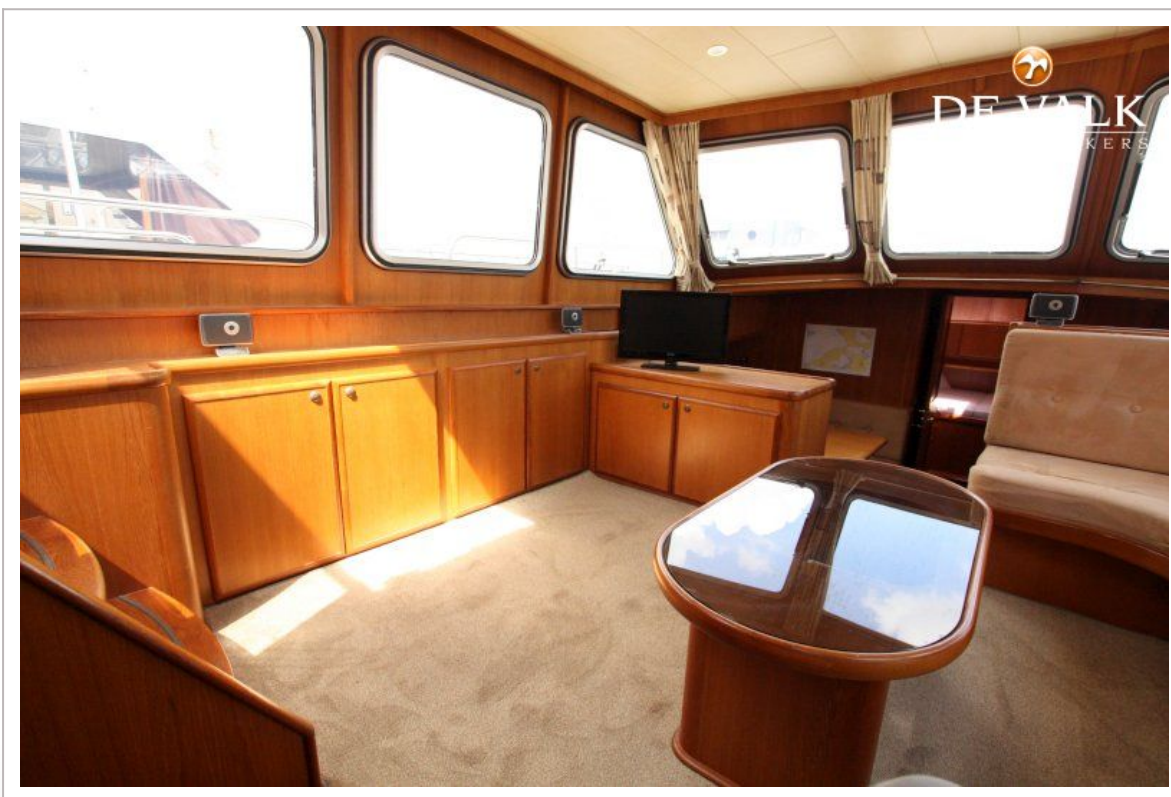
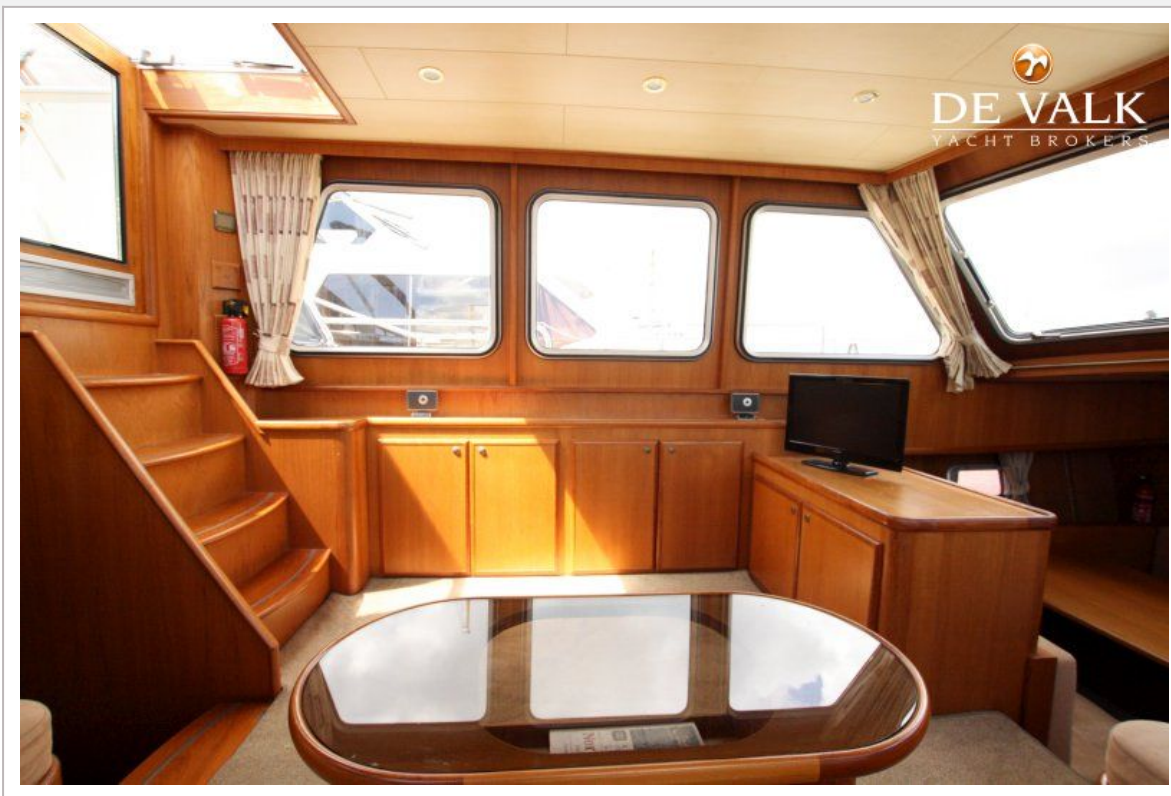
AQUANAUT 1350



AQUANAUT 1350



AQUANAUT 1350



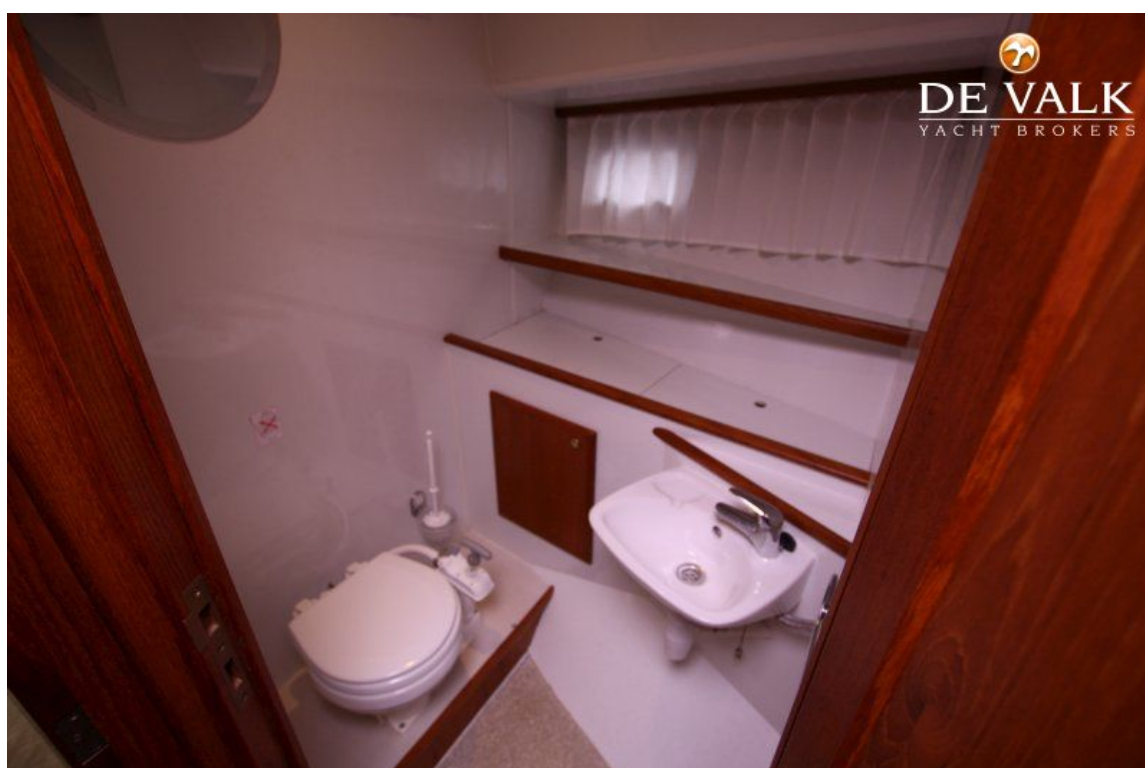
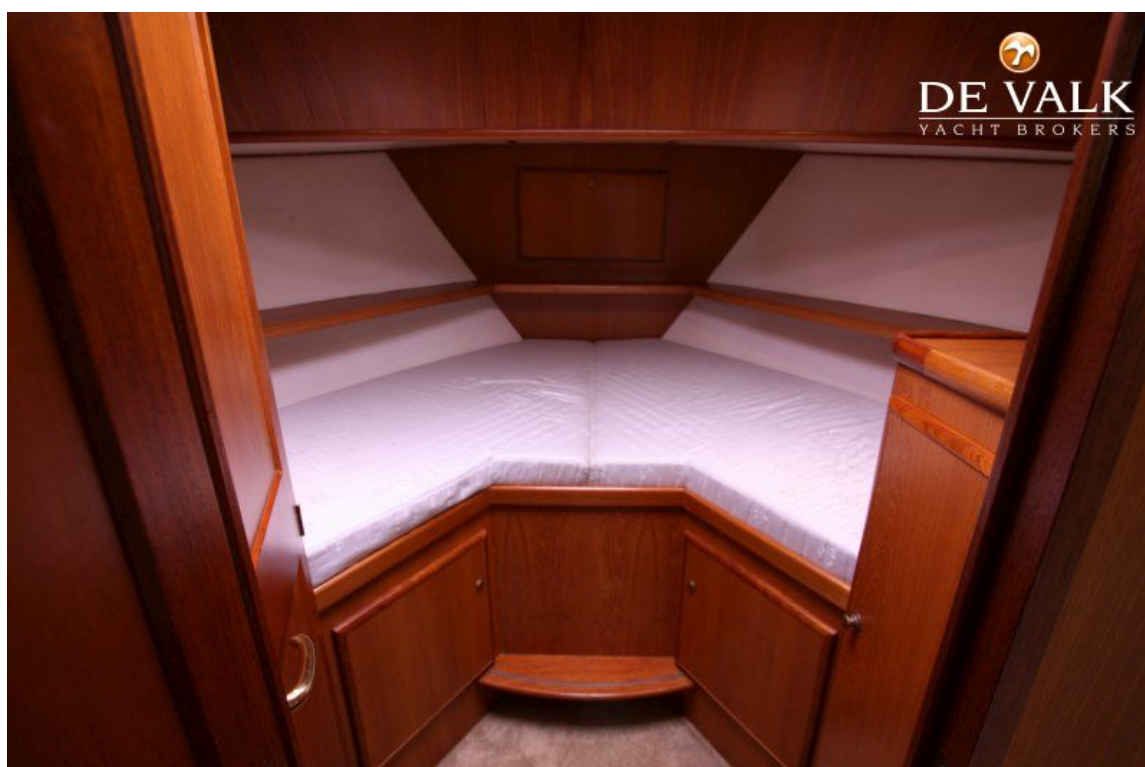
AQUANAUT 1350



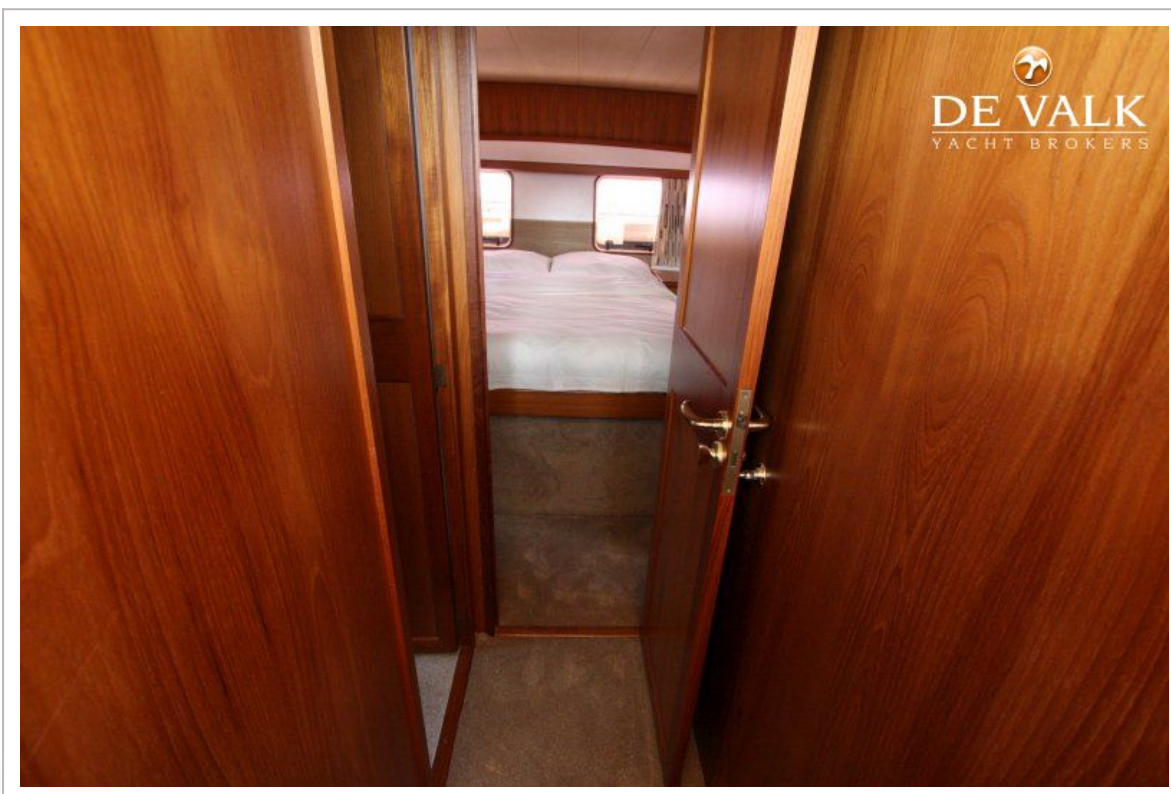
AQUANAUT 1350



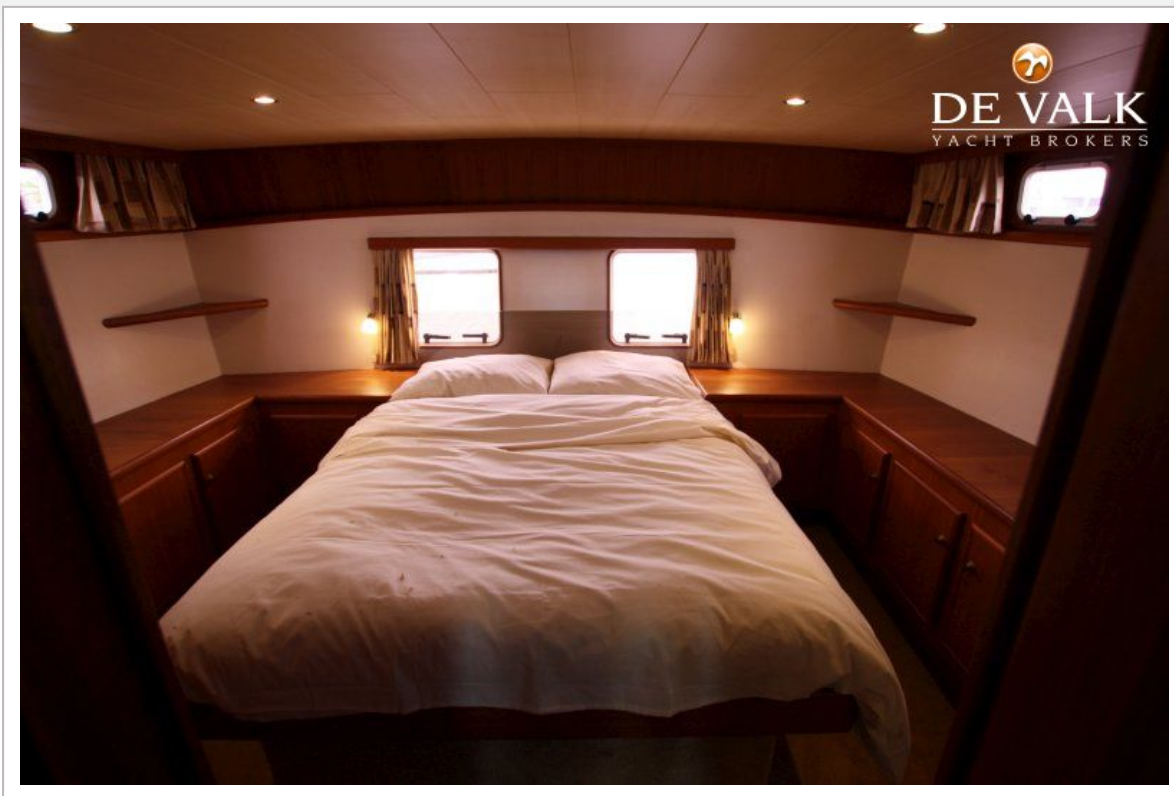
AQUANAUT 1350



AQUANAUT 1350



AQUANAUT 1350



AQUANAUT 1350

