



## MARHEN KRUISER 10.85

# MARHEN KRUISER 10.85

## BROKER'S COMMENTS

The Marhen 10.85 AK is both compact as comfortable. Due to the large aft deck of the Marhen, you can comfortably enjoy the sailing with your friends and family. The underwater ship and hull are repainted in 2017. Complete equipped with one cabin, dinette, galley, saloon and a new bimini and cover. This Marhen 10.85 is definitely worth a visit, come to our sales marina in Loosdrecht now and feel free to step on board of this Marhen.

**Mark Hesselmans**

## SPECIFICATIONS

<b>Dimensions</b>	10.85 x 3.60 x 1.10 (m)	<b>Builder</b>	Marhen yachten
<b>Built</b>	2004	<b>Cabins</b>	1
<b>Material</b>	Steel	<b>Berths</b>	4
<b>Engine(s)</b>	1 x Lombardini Marine LDW 2004 M diesel	<b>Hp/Kw</b>	83.00 (hp), 61.01 (kw)
<b>Asking price</b>	sold (VAT )	<b>Lying</b>	at sales office

## CONTACT

<b>Sales office</b>	De Valk Loosdrecht B.V.	<b>Telephone</b>	+31 (0)35 582 90 30
<b>Address</b>	't Breukeleveense Meentje 6 1231LM Loosdrecht / Wijdmeren NL	<b>E-mail</b>	loosdrecht@devalk.nl

## DISCLAIMER

These particulars are given in good faith as supplied but cannot be guaranteed.



## GENERAL

Model	MARHEN KRUISER 10.85
Type	motor yacht
LOA (m)	10,85
Beam (m)	3,60
Draft (m)	1,10
Air draft min (m)	2,83
Headroom (m)	1,95
Year built	2004
Launched	2006
Builder	Marhen yachten
Country	The Netherlands
Displacement (t)	11
CE norm	NA
Hull material	steel
Hull colour	white The underwater ship and hull are repainted in 2017
Hull shape	hard chine
Superstructure material	steel
Rubbing strake	rubber
Deck material	steel
Deck finish	non-skid paint
Superstructure deck finish	non-skid paint
Window frame	aluminium
Window material	glass
Portholes	aluminium
Mast can be lowered	manual
Fuel tank (litre)	500
Freshwater tank (litre)	300
Level indicator (freshwater)	yes
Blackwater tank (litre)	140
Level indicator (blackwater)	yes



Wheel steering	hydraulic
Outside helm position	yes

## ACCOMMODATION

Cabins	1
Berths	4
Floor	vinyl
Headroom saloon (m)	1,95 m
Heating	diesel ducted hot air Webasto
Dinette	yes
Opening door to aft deck	yes
Galley	yes
Countertop	Duropal
Sink	stainless steel
Cooker	calor gas 3-Burner
Microwave/oven combi	yes
Fridge	Dometic
Hot water system	220V + engine
Water pressure system	electrical
Owners cabin	French bed
Wardrobe	drawers
Bathroom	en suite
Toilet	en suite
Toilet system	electric
Wash basin	at the toilet
Shower	en suite
Guest cabin 1	v-bed

## MACHINERY

No of engines	1
Make	Lombardini Marine



# MARHEN KRUISER 10.85

Type	LDW 2004 M
HP	83,00
kW	61,01
Fuel	diesel
Maximum speed (kn)	8
Cruising speed (kn)	6,5
Engine hours	604
Engine cooling system	
Drive	shaft
Engine controls	bowden cable
Gearbox	hydraulic
Bowthruster	electric BCS 85 Kgf
Sternthruster	electric
Propeller type	fixed
Electric bilge pump	yes
Electrical installation	yes
Batteries	1x 180Ah + 3x 170Ah
Battery monitor	Victron Energy Phoenix Multi Control
Shorepower	with cable

## NAVIGATION

Depth sounder/log	NASA Marine Target 2
VHF	Navman VHF 7100
Navigation lights	yes

## EQUIPMENT

Cockpit cover	2017
Bimini	2017
Bathing platform	yes
Boarding ladder	stainless steel
Anchor	Pool



# MARHEN KRUISER 10.85

Anchor chain	yes
Windlass	manual Lofrans Royal
Deck wash	yes
Davits	stainless steel Allpa
Davits controls	manual
Sea railing	stainless steel
Grab rail (superstructure)	stainless steel
Railing side opening gates	yes
Wiper	yes
Horn	electric
TV	Schneider
Radio-cd player	Kenwood
Speakers in salon	yes
Clock - barometer	yes





BROKERAGE | CHARTER | BERTHS | FINANCE | INSURANCE | YACHT MANAGEMENT  
**DE VALK**  
YACHT BROKERS



**This yacht will be auctioned,  
for further details please visit [www.devalk.nl](http://www.devalk.nl)**

**Dit schip zal worden geveild,  
voor meer informatie gaat u naar [www.devalk.nl](http://www.devalk.nl)**

**Dieses Schiff wird versteigert,  
für weitere informationen besuchen Sie [www.devalk.nl](http://www.devalk.nl)**

[WWW.DEVALK.NL](http://WWW.DEVALK.NL)



**DE VALK**  
YACHT BROKERS



# MARHEN KRUISER 10.85





# MARHEN KRUISER 10.85



# MARHEN KRUISER 10.85



# MARHEN KRUISER 10.85

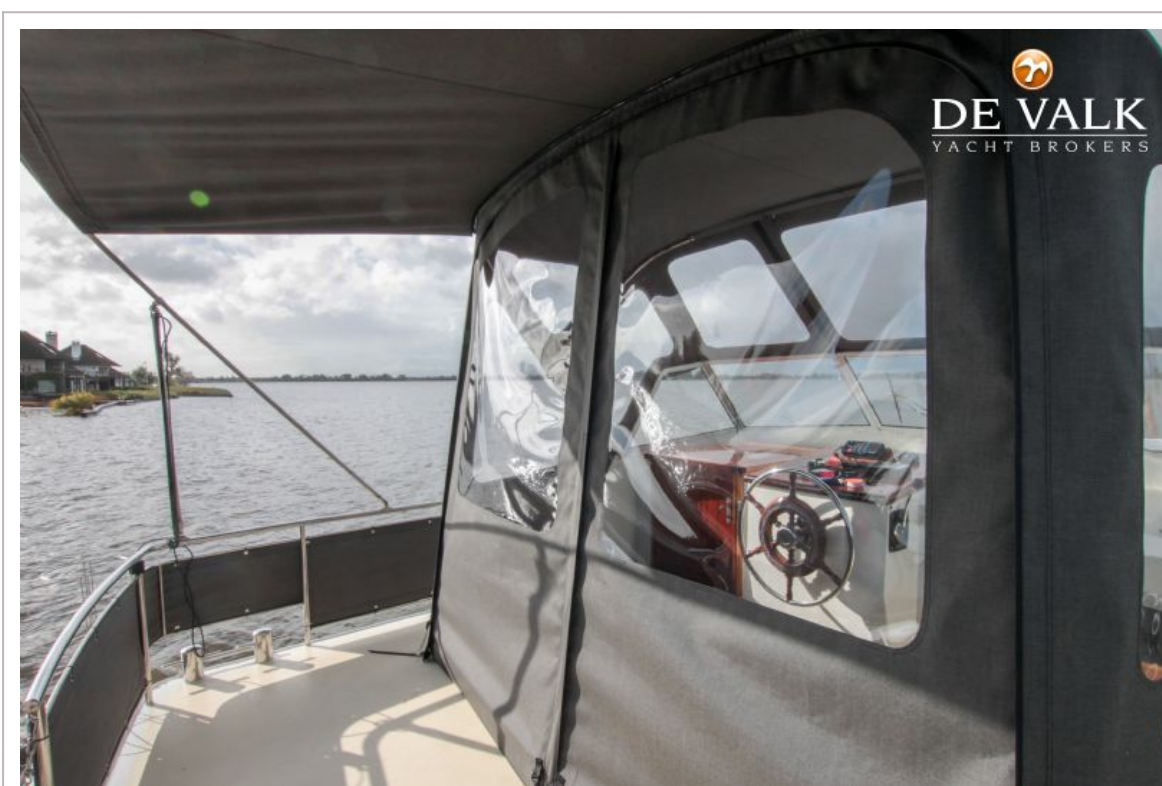




## MARHEN KRUISER 10.85



# MARHEN KRUISER 10.85





## MARHEN KRUISER 10.85



# MARHEN KRUISER 10.85





## MARHEN KRUISER 10.85

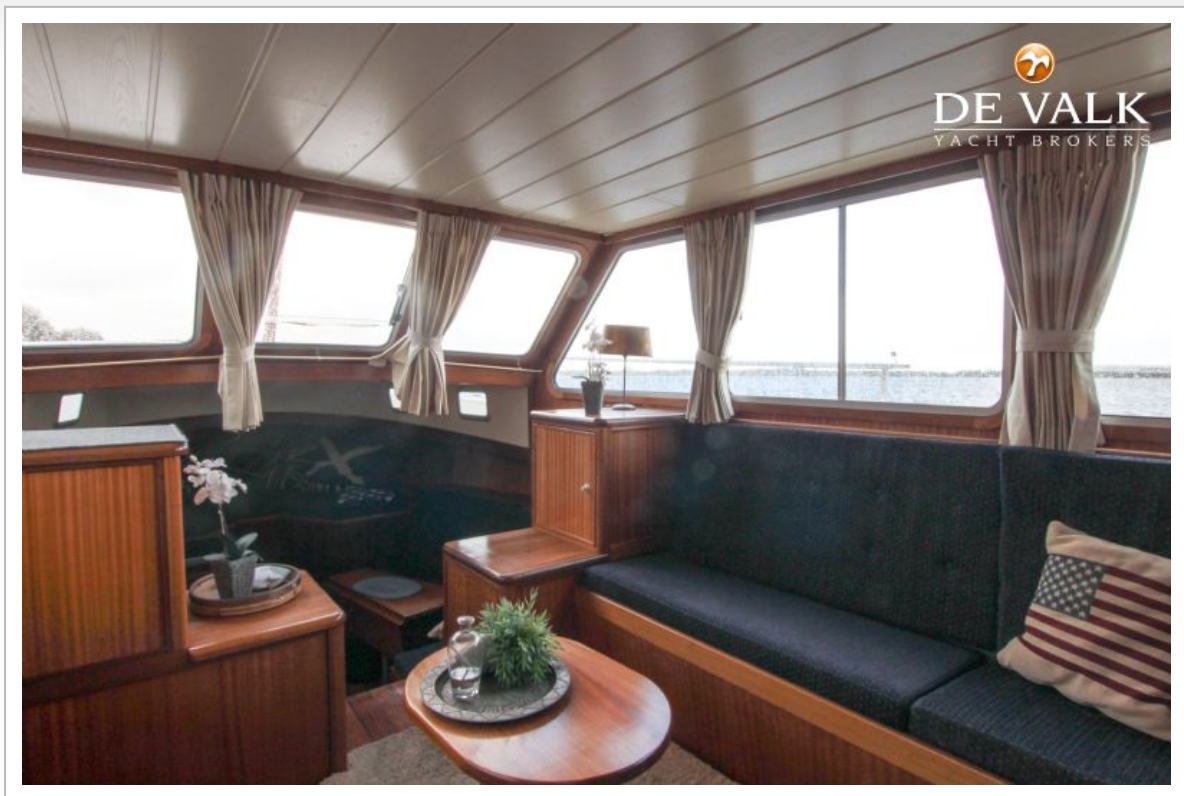




## MARHEN KRUISER 10.85



# MARHEN KRUISER 10.85





## MARHEN KRUISER 10.85



## MARHEN KRUISER 10.85

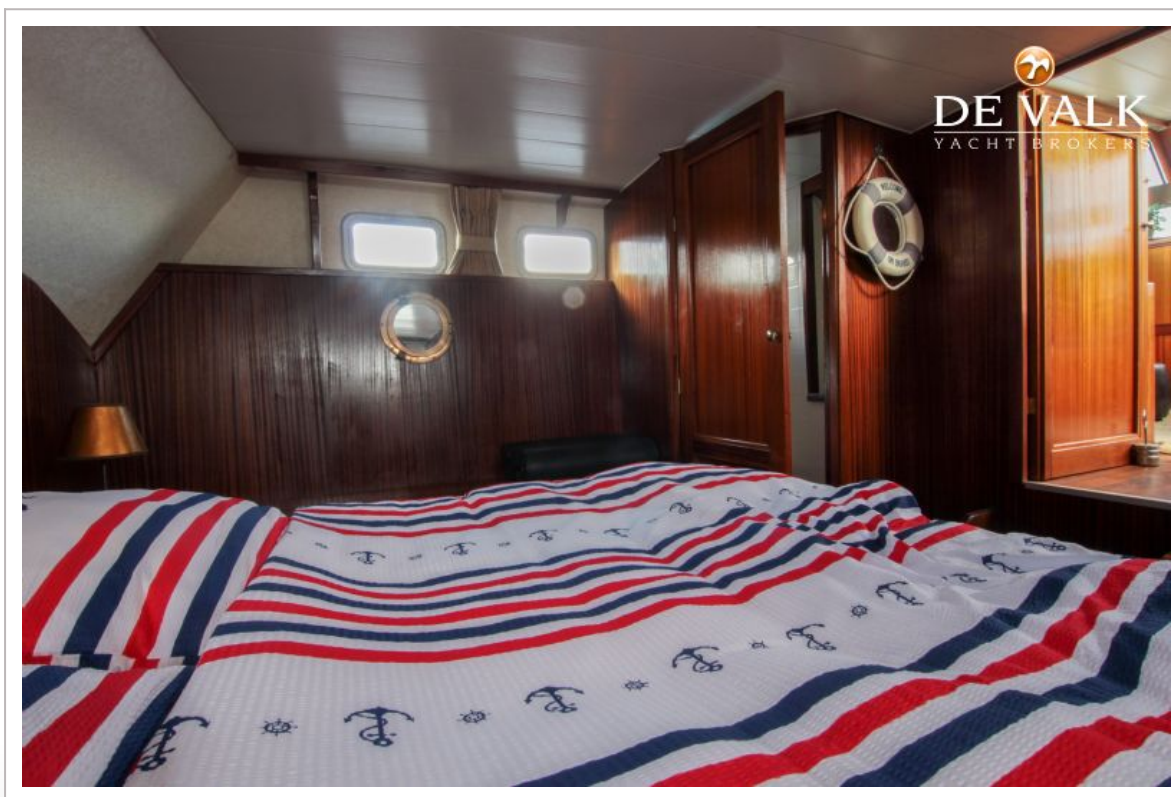
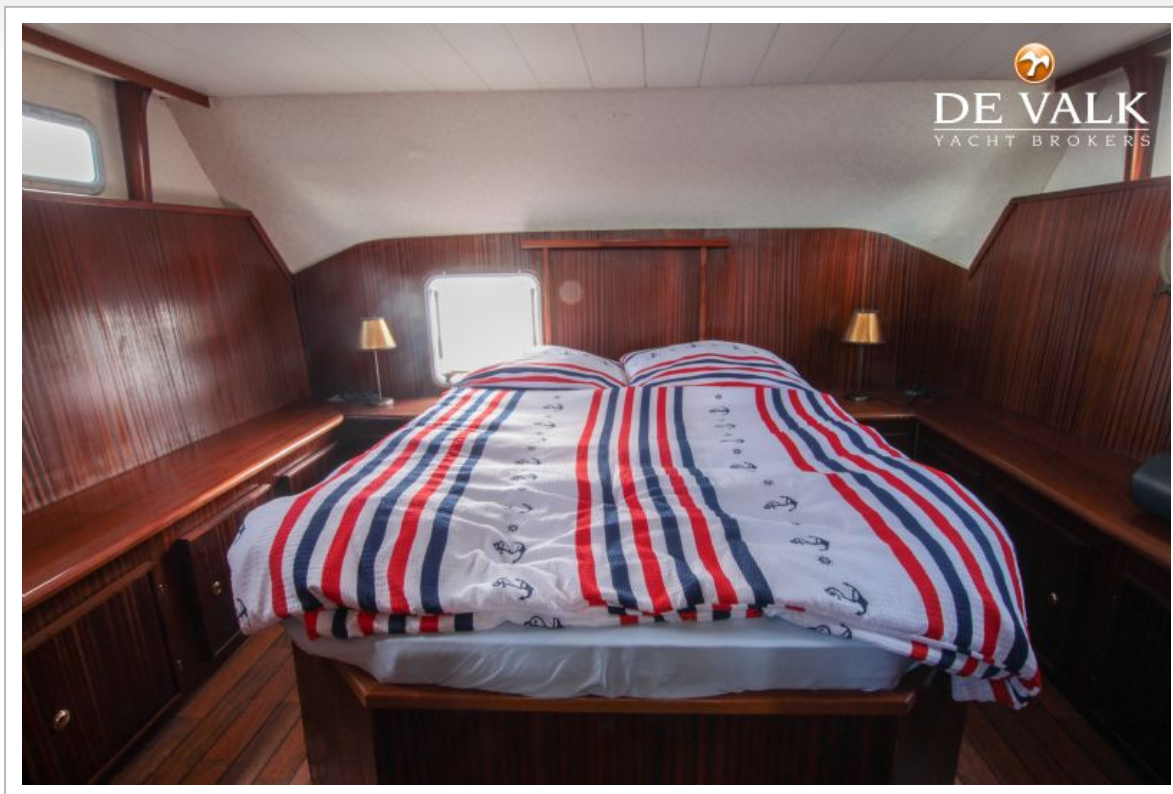




## MARHEN KRUISER 10.85

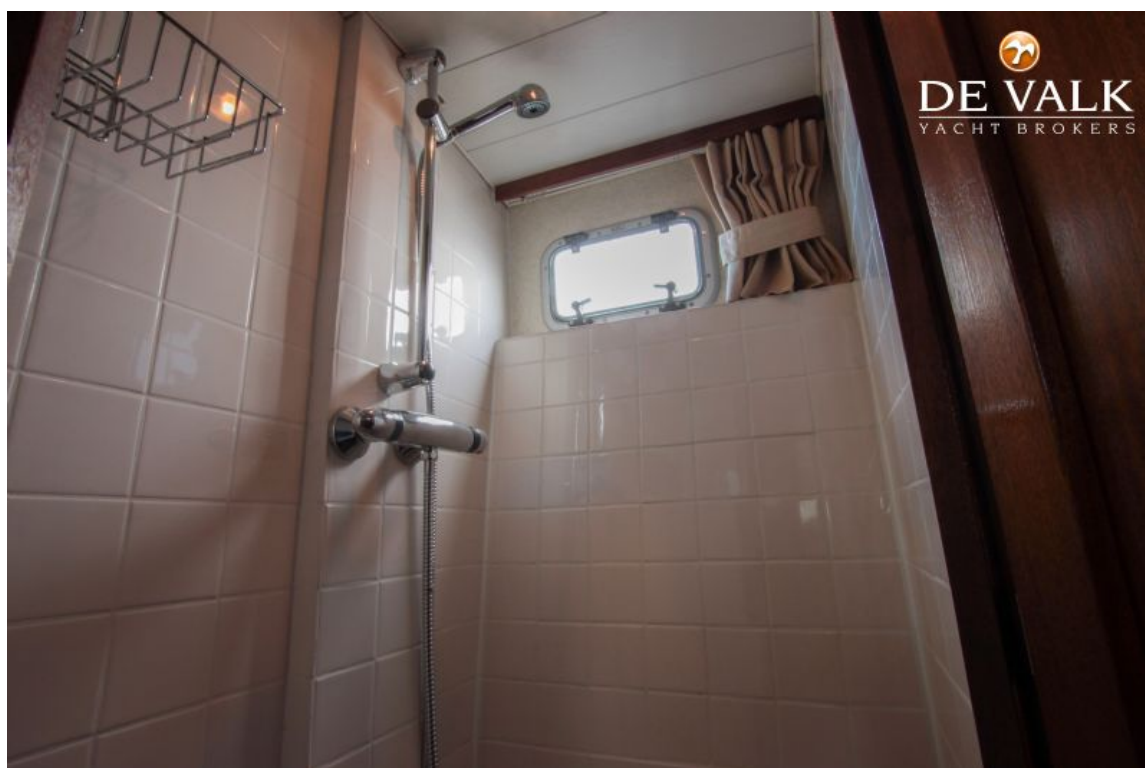


# MARHEN KRUISER 10.85





## MARHEN KRUISER 10.85



# MARHEN KRUISER 10.85

